

# BendPak®

# OCTAFLEX™ 12DPS



## Revolutionizing Vehicle Service

Raising the Standards of Safety



- 2 Lifts in 1
- 12,000-lb. Capacity Primary Arms

• Allows EZ EV Battery R&R

- Pendant Controls

Patent Pending\*



**LEARN MORE**



**360° ASARS** Automatic Swing Arm Restraint System

Provides the Ultimate In Safety and Vehicle Fall Protection

1-800-253-2363 | [WWW.BENDPAK.COM](http://WWW.BENDPAK.COM)

\*This product is currently patent pending in the United States and various other countries, signifying our active pursuit of legal protection for its innovative features and design.

© 2026 BendPak Inc. BendPak is a registered trademark.

# INTRODUCING THE BENDPAK OCTAFLEX SERIES: AN INNOVATION FIRST IN CAR LIFT HISTORY

BendPak is transforming the car lift industry once again with our groundbreaking OctaFlex™ system. Featuring two sets of fully adjustable, telescoping lift arms that operate independently, OctaFlex isn't just another lift, it's a game-changer. This innovative system not only provides the functionality of a traditional two-post lift, but also enables technicians to tackle previously challenging tasks, such as cab-off repairs, without the need for extra equipment or personnel. It's like having 2 lifts in 1.

The main lift arms securely support vehicles weighing up to 12,000 pounds, while the auxiliary lift-assist arms, with a capacity of 6,000 pounds, facilitate the safe and ergonomic lifting and maneuvering of heavy components like EV battery packs, drivetrains, tires, and wheel assemblies with unmatched precision. This ensures a seamless workflow and minimizes the risk of workplace injuries.

When not in use, the auxiliary lift-assist arms can be effortlessly raised and stowed away, allowing the lift to function as a standard two-post model. BendPak's OctaFlex system redefines efficiency and safety in automotive repair, making complex tasks easier and safer than ever before.





Ready to implement workplace systems that will help you surpass your operational efficiency goals? Talk to the BendPak team to learn more about how OctaFlex can meet or exceed your vehicle service needs. Contact us today by calling 1-800-253-2363, or by completing the form at <https://www.bendpak.com/octaflex>

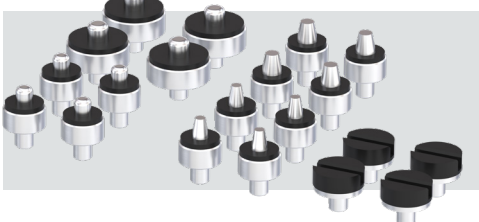
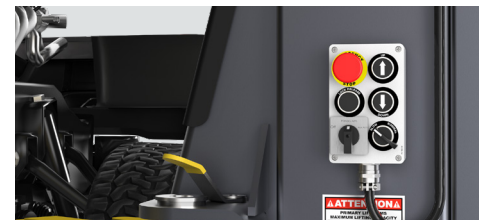
## FEATURES

1. 12,000-lb. load capacity, primary lift arms
2. 6,000-lb. load capacity, auxiliary lift assist arms
3. Wide drive-thru configuration: dimension 102.75 in. (2,610 mm)
4. Triple-telescoping primary lift arms
5. Double-telescoping screw pads offer increased versatility
6. Padded overhead safety shutoff bar
7. Exclusive Bi-Metric arm design for more versatile arm positioning
8. User-friendly pendant controls for easier lifting operations
9. Heavy-duty, aircraft-quality equalizer cables synchronize primary lift arms and maintain level lifting
10. Dual, direct-drive hydraulic cylinders and oversized 53 in. (1,346 mm) tall carriages power the primary lifting system, while providing superior strength and durability
11. Electric-hydraulic HVLP power system
12. Self-lubricating, dura-glide UHMW polyethylene bearing system
13. Safety locks spaced every 4" (102 mm)
14. Primary lift arms feature automatic arm restraints that can withstand over 2,000-lbs. of side force
15. Drop-end arms provide a lower pad height
16. Oversized cable sheaves reduce cable fatigue
17. Optional stackable adapters

## PRODUCT DETAIL

### User-Friendly Pendant Controls

Easy to use pendant controls simplify lifting operations with intuitive features, including up and down buttons, safety lock engagement, and an emergency stop button for enhanced safety.



### Frame-Engaging Chassis Mount Adapters

Frame-engaging, chassis mount adapters are included to accommodate diverse vehicle chassis and various battery pack support options.

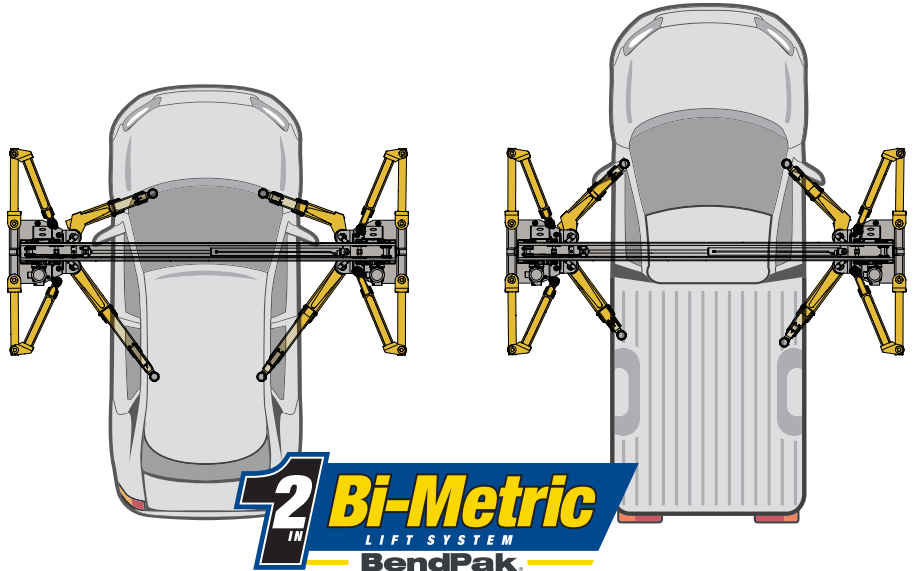


## Automatic Arm Restraint System Prevents Unplanned Movement

Our revolutionary Automatic Swing Arm Restraint System (ASARS) equipped on the primary lifting arms features 360-degrees of load-holding grip. This adaptive system requires minimal operator involvement and delivers unparalleled holding power.

Asymmetric Configurations

Symmetric Configurations.



## Triple-Telescoping, Bi-Metric™ Lifting Arms

Three-stage, Bi-Metric lifting arms achieve more telescoping movement due to their patent-pending nesting feature, resulting in greater retraction and increased arm reach. Bi-Metric adaptable swing arms can be quickly set in either symmetric or asymmetric configurations.

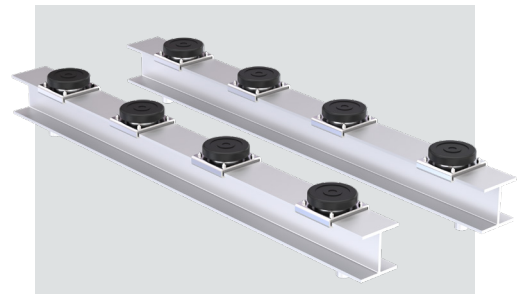


## Screw Pads and Adapters That Adjust to Your Needs

Adjustable screw pad adapters made of gouge and tear-resistant polyurethane can be adjusted up or down to ensure safe, level lifting. A variety of height stackable adapters are also available providing greater vertical pad placement for precise and safe vehicle support.

## Cross Beam Adapters

Optional aluminum support beams helps distribute the weight of EV battery packs and prevent concentrated loading on specific points, reducing stress and potential damage to delicate components. Adjustable polyurethane contact pads can be precisely positioned to create optimum non-marring contact points.



# Optional Shuttle Bench & Leveling Platform with Slip Plate

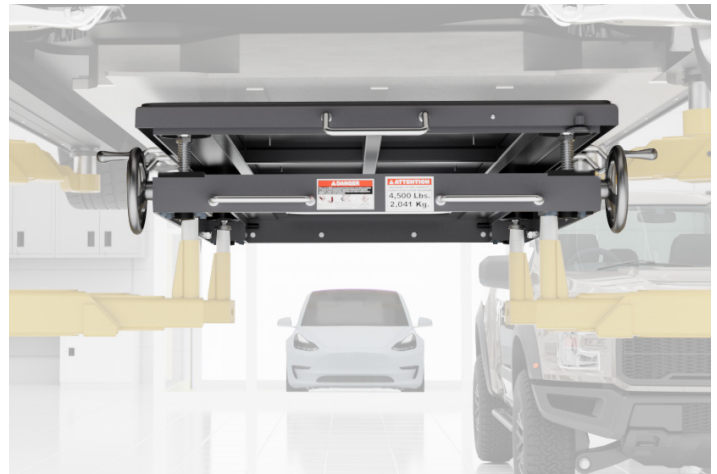
This highly developed table cart has been designed to facilitate the seamless maintenance of critical components such as EV batteries and drivetrain assemblies. The zero-throw casters at the core of this innovation redefine mobility, allowing the shuttle bench to move heavy components effortlessly in any direction with minimal effort. Operators enjoy a new level of confidence and ease when maneuvering and positioning heavy vehicle components.

The Leveling Platform ensures secure handling and positioning of components thanks to a Slip Plate and Heavy-Duty Precision Screw Jacks. These innovative features offer quick and easy adjustments for roll, pitch, and yaw – ensuring precise alignment and leveling of EV batteries, drivetrain assemblies, and more. The integrated slip-plate deck features low profile maintenance-free ball bearing retainers with nylon bearings that enable simple side-to-side shifting of the platform for even more adjustability.

The intuitive design ultimately minimizes the time and effort required to get the job done. Technicians and engineers can now enjoy a hassle-free experience when working on conventional vehicles or EVs.



Optional Shuttle Bench with Side Shift and Leveling Platform



Optional Side Shift & Leveling Platform

## Full-Floating Ball Bearing Slip Plate Deck with Push & Pull Handles

The integrated Slip-Plate Deck features low rolling maintenance-free ball bearing retainers with nylon bearings that enable side-to-side motion and heavy duty leveling jacks to ensure precise alignment.

COMING  
SOON



# SPECIFICATIONS

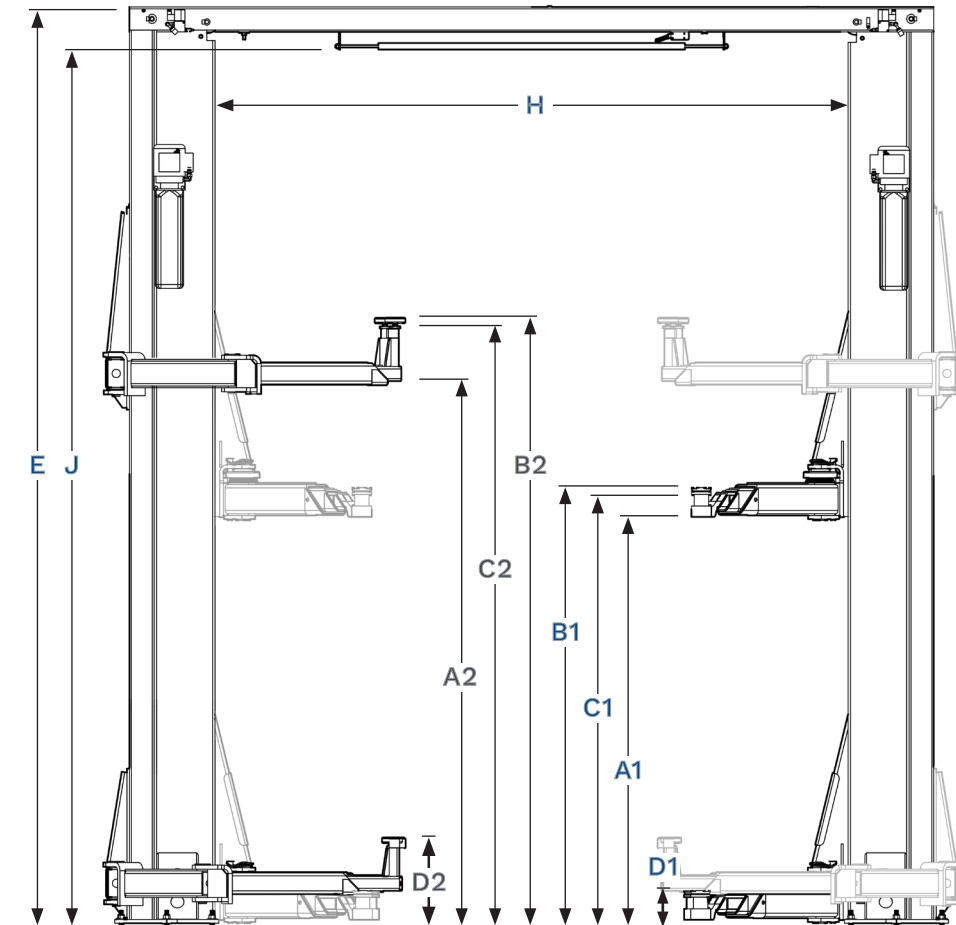
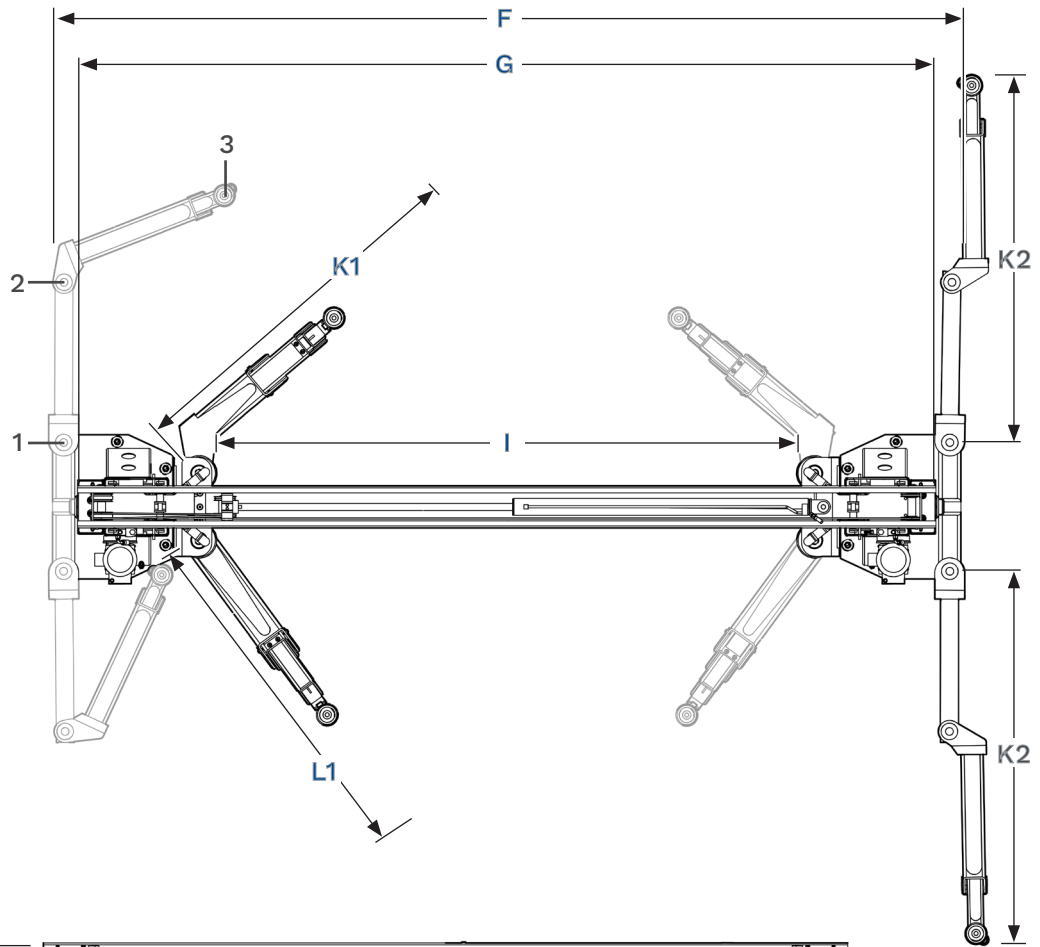
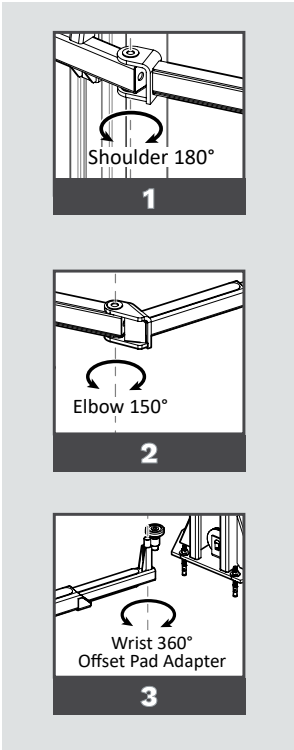
Model	OctaFlex (Primary Lifting Arms)
Lifting Capacity (Set of Four)	12,000 lbs. / 5,443 kg
- Max. Capacity — Front Axle / Rear Axle	6,000 lbs. / 2,722 kg
- Max. load per Lift Arm (Each)	3,000 lbs. / 1,361 kg
A1 – Max. Rise	75" / 1,905 mm
B1 – Lifting Height w/ Pad <sup>1</sup>	81.25" / 2,062 mm
C1 – Max. Lifting Height <sup>1</sup>	80.5" / 2,042 mm
D1 – Min. Height w/ Pad	6.25" / 157 mm
E – Overall Height	173.5" / 4,405 mm
F – Overall Width	161" / 4088 mm
G – Outside Posts	152" / 3,863 mm
H – Inside Posts	119.75" / 3,041 mm
I – Drive-Thru Width	102.75" / 2,610 mm
J – Floor to Top Switch	166" / 4,216 mm
K1 – Front Arm Reach	26" / 719 mm (min.) - 55.25" / 1,404 mm (max.)
L1 – Rear Arm Reach	29.25" / 745 mm (min.) - 60" / 1,524 mm (max.)
Screw Pad Adjustment	2" / 51 mm
Time to Full Rise	≈ 55 seconds
Motor <sup>2</sup>	220 VAC, 60 Hz, 1 Phase
Sound	<70 dB

Model	OctaFlex (Auxiliary Lifting Arms)
Lifting Capacity (Set of Four)	6,000 lbs. / 1,134 kg
- Max. Capacity — Front Axle / Rear Axle	3,000 lbs. / 567 kg
- Max. load per Lift Arm (Each)	1,500 lbs. / 284 kg
A2 – Max. Rise	101" / 2,565 mm
B2 – Lifting Height w/ Pad <sup>1</sup>	113.25" / 2,877 mm
C2 – Max. Lifting Height <sup>1</sup>	111.25" / 2,826 mm
D2 – Min. Height w/ Pad	16" / 406.5 mm
K2 – Front Arm Reach & Rear Arm Reach	16.75" / 422 mm (min.) - 74.5" / 1,893 mm (max.)

(1) Lifting Height is maximum lifting height of the lift arms with contact pads adjusted to their lowest setting and no height adapter(s). Maximum Lifting Height is maximum lifting height of lift arms with contact pads adjusted to high setting and with both tall and medium adapters installed (Sold Separately).

(2) Special voltages available upon request.

(3) Actual rise and descent times vary depending on vehicle weight. Specifications subject to change without notice.



**PATENT PENDING**

\*This product is currently patent pending in the United States and various other countries, signifying our active pursuit of legal protection for its innovative features and design.

# Other Popular Products From BendPak

## 12APX Series Rise To New Heights

With a lifting capacity of 12,000 lbs. and featuring a revolutionary design that combines the best qualities of today's two-post lift types, our 12APX lifts are purposefully built to adapt alongside the vehicles it services. The 12APX series are high-lifts which have been made to accommodate mechanics out there who are consistently working in uncomfortable conditions on the job.



## Mobi-EVS™ Series EV Battery Pack and Powertrain Lift Table

The EVS4500 boasts a 4,500-lb. lift capacity and features a compact design which can be easily transported anywhere in the workplace, making it ideal for multi-bay facilities or workplaces with confined areas. Mobi-EVS models feature multiple recessed anchoring locations for accommodating a variety of modular fixtures, adapters, and accessories.

## AP-SRT Series Short-Column/Rise Two-Post Lift

You're not always going to need to stand under a vehicle, and that's where the AP-SRT lifts come in. These short-rise, short-column lifts are perfect for shops that primarily deal with tire, wheel, and brake services. The AP-SRT lifts are the latest addition to the revolutionary AP Series and fit perfectly in shops and low-ceiling garages.



SKU 5900412

BendPak makes no promises, guarantees or assurances that our products meet any state, county, federal or international mandated permit, license, code, standard, certification, or any other mandate other than what is listed or shown on BendPak website(s), or any online or published catalog. Not all BendPak lift models meet the standards as prescribed by ANSI/ALI ALCTV-(current edition) or ANSI/UL 201. Consult [www.autolift.org](http://www.autolift.org) for a complete list of lift models that meet ANSI/ALI ALCTV-(current edition) or ANSI/UL 201, or contact BendPak via [contact@bendpak.com](mailto:contact@bendpak.com). Buyer assumes full responsibility for any state, county, federal or international mandated permit, license, code, standard, certification, or any other mandate required related to the installation and/or operation of any BendPak or Ranger product. BENDPAK will not be responsible for any charges, fines, liens, or other levies imposed on the Buyer related to any special or regional structural, seismic or any other building code and/or codes such as the Uniform Building Code (UBC), International Building Code (IBC), or any other state, county, federal or international mandated permit, license, code, standard, certification, or other mandate, law, rule, regulation or directive by any other agency, government, administrations, or corporations whether state, county, federal, or international mandated.

Sourcewell



Awarded Contract  
121223-BND

**BendPak**