

Frame Cradle Pads

BendPak®

Car Lift Accessories

SKU# 5215761

Frame Cradle Pads / 60 mm Pin / SET OF 4

Questions? Contact BendPak's Sales Team

sales@bendpak.com | 1-800-253-2363

Monday - Friday, 7AM to 4:30PM PST

Frame Cradle Pads are Perfect for Trucks & SUVs

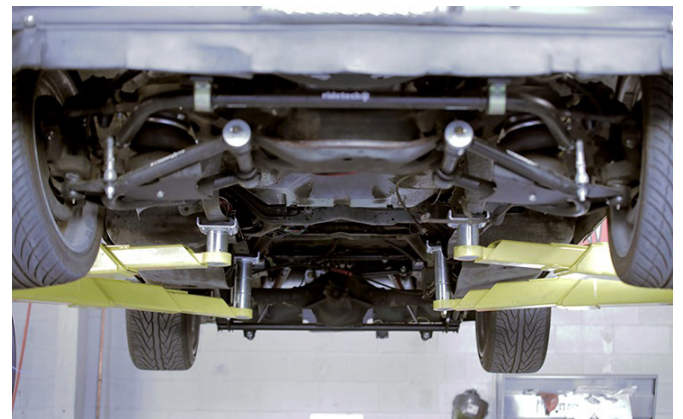
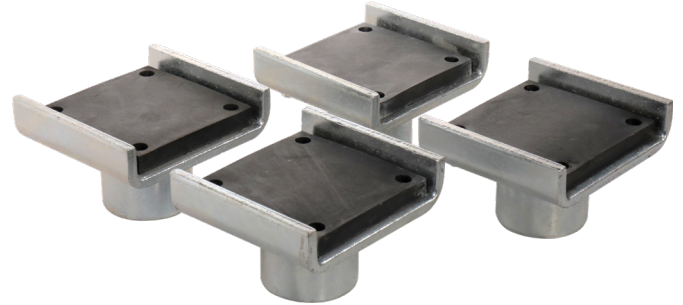
Anyone who has ever lifted a full-sized truck or SUV onto a [two-post lift](#) knows what a dicey procedure it can be. Especially if you are using the Lift Pad Assembly used for most standard and compact vehicles. And it isn't only the safety of your car that you need to worry about. Reduce your risk with the Frame Cradle Pads from BendPak, and make sure your vehicle has nowhere to go except up and over—when you decide.

With their rugged construction, Frame Cradle Pads are built to last for as long as your shop is in business. The heavy-duty steel, and thick polyurethane rubber pad lining are designed to take on heavy abuse. Not to mention the polyurethane's textured surface, which protects your chassis frame from damage, while providing an extra measure of safety by reducing any chance of slipping. And with a 35 mm or 60 mm diameter pin, your Frame Cradle Pads will drop into our two-post lift arms with ease.

No matter what kind of work you're doing, lifting your vehicle safely should always be a priority. Trucks and SUVs have a rectangular steel frame that simply isn't compatible with a normal Lift Pad Assembly. If you are lifting bigger trucks and SUVs, then it is necessary to outfit your two-post lift with the Frame Cradle Pad adapters. Your truck or SUV chassis frame fits securely in the steel channel, preventing any potential movement of your vehicle while it's in the air. This provides you with peace of mind while you do all the hard work underneath.

Features

- Perfect for use with a BendPak two-post lift
- Accommodates 35 mm or 60 mm assemblies
- Sturdy steel construction
- Tactile rubber mat reduces slippage and protects finish
- Sold in sets of four



BendPak®



1645 Lemonwood Dr, Santa Paula, CA 93060

© 2022 BendPak Inc. All rights reserved.