

1302BAS Semi-Auto Pipe Bender

BendPak®

SKU# 5115180

1302 Semi-Automatic Pipe Bender with Deluxe 302 Tooling

Questions? Contact BendPak's Sales Team

sales@bendpak.com | 1-800-253-2363

Monday - Friday, 7AM to 4:30PM PST

Brings an Extra Level of Precision to Your Workshop

The BendPak 1302BAS series is comprised of powerful automatic exhaust [pipe benders](#) designed to expedite any bending process and bring an extra level of precision to your workshop. Convenient, space-saving, side-loading swager lets you load longer pipe, even when your back is against the wall. Includes a die package and dual-function, end-finishing unit for extremely precise OE expansions and flares.

Features

- 2 separate end-finishing units at rear for all necessary flaring and expanding
- 3-button control for automatic or manual bending
- **Deluxe 302 Tooling Package (Standard)**
- **Deluxe Metric Tooling Package (Optional)**
- Complete with quick release bending and finishing dies
- High-speed clampless swager and internal expander
- Easy-to-use drop-in collar makes swaging quick
- Twist-lock tooling
- Integrated power-relief control valve
- Rigid 6" x 6" x 3/8" welded-steel tube frame
- Commercial-grade hydraulic cylinders
- All cylinders feature chrome-molly shafts, conforming to ANSI 92.2 standards
- Quick-release bending dies for reduced set-up times
- Bending heads precision grounded to within .002"
- Enclosed controls keep your bending area clutter-free
- 2.5" oversized barrel shafts for maximum dependability and minimum maintenance
- Standard grease fittings allow for simple lubrication
- NEMA rated on / off switch box incorporates overload relays that automatically disrupt power supply should an unforeseen over-current situation occur
- Pressure gauges let you know exactly what the system pressures are at all times
- Remote foot operated controls
- Adjustable pressure valve located right up front
- One piece barrel ensures that the bending gates stay perfectly aligned with the ram
- Strong, 5 HP energy efficient motor delivers maximum performance

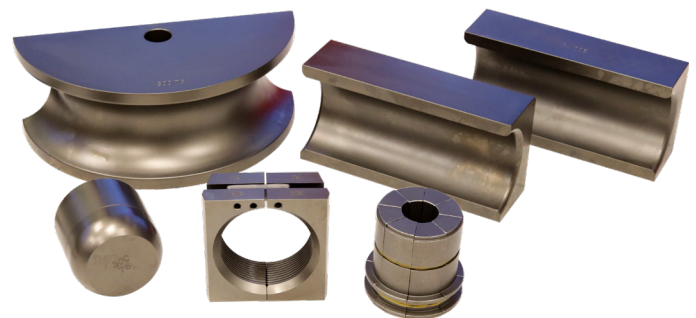


Quick-change bending dies

With simple, twistable locks and quick-change bending dies, you'll be cycling through bending projects faster than any of your competitors. Let them try to play catch-up with their cheap imitation pipe benders while you run ahead with the best. You'll be glad you went with the world leader in pipe bending.

Long-stroke bending cylinder

BendPak pipe benders, fitted with an extended-length, 14" top cylinder, do not require the use of pusher block extensions for small-radius die jobs. Additionally, the cylinder can be retracted, offering more clearance for die-changing, as well as the removal of bent tubes.



Optional 300-1 Large 3" Die Package / 6-Piece

Give your pipe bender 3" pipe bending capability with this optional 6-piece die package.

BendPak®



30440 Agoura Road, Agoura Hills, CA 91301

Specifications

Model	BB-2	1302BAS	1302BA
Bending Controls	Manual / Knee Lever	Semi-Auto / 3-Button	Automatic / Digital
Expander Controls	Manual / Knee Lever	Manual / Knee Lever	Manual / Knee Lever
Frame Style	Double-Ended Expander	Double-Ended Expander	Double-Ended Expander
Max. Tube Capacity	3" (76 mm) .095 wall	3" (76 mm) .095 wall	3" (76 mm) .095 wall
Max. Bending Radius	5" (127 mm)	5" (127 mm)	5" (127 mm)
Min. Bending Radius	3.3" (89 mm)	3.3" (89 mm)	3.3" (89 mm)
Top Cylinder Force	60,000 lbs. (27,216 kg)	60,000 lbs. (27,216 kg)	60,000 lbs. (27,216 kg)
Dimensions	42" x 62" x 31" (1,067 mm x 1,575 mm x 787)	41" x 64" x 26" (1,041 mm x 1,626 mm x 660)	41" x 64" x 26" (1,041 mm x 1,626 mm x 660)
Shipping Weight	1,264 lbs. (573 kg)	1,282 lbs. (582 kg)	1,418 lbs. (643 kg)
Shipping Dimensions	48" x 70" x 30" (1,219 mm x 1,778 mm x 762 mm)	48" x 70" x 30" (1,219 mm x 1,778 mm x 762 mm)	48" x 70" x 30" (1,219 mm x 1,778 mm x 762 mm)

Choose Deluxe 302 Tooling (208-230V, 60 Hz 1-Phase)

Model	BB-2-DLX-601	1302BAS-DLX-601	1302BA-DLX-601
SKU#	5115150	5115180	5115121
Motor	5 HP / 208-230 VAC / 60 Hz / 1 Ph	5 HP / 208-230 VAC / 60 Hz / 1 Ph	5 HP / 208-230 VAC / 60 Hz / 1 Ph
302 Tooling Pack	1.5", 1.75", 1.625", 2", 2.25", 2.5"	1.5", 1.75", 1.625", 2", 2.25", 2.5"	1.5", 1.75", 1.625", 2", 2.25", 2.5"

Choose Metric Tooling (208-230V, 60 Hz 1-Phase)

Model	BB-2-MET-601	1302BAS-MET-601	1302BA-MET-601
SKU#	5115122	5115124	5115127
Motor	5 HP / 208-230 VAC / 60 Hz / 1 Ph	5 HP / 208-230 VAC / 60 Hz / 1 Ph	5 HP / 208-230 VAC / 60 Hz / 1 Ph
MET Tooling Pack	38mm, 42mm, 45mm, 48mm, 51mm, 60mm	38mm, 42mm, 45mm, 48mm, 51mm, 60mm	38mm, 42mm, 45mm, 48mm, 51mm, 60mm

Choose Metric Tooling (208-460V, 50 Hz 3-Phase)

Model	BB-2-MET-503	1302BAS-MET-503	1302BA-MET-503
SKU#	5115120	5115123	5115126
Motor	7.5 HP / 208-460 VAC / 50 Hz / 3 Ph	7.5 HP / 208-460 VAC / 50 Hz / 3 Ph	7.5 HP / 208-460 VAC / 50 Hz / 3 Ph
MET Tooling Pack	38mm, 42mm, 45mm, 48mm, 51mm, 60mm	38mm, 42mm, 45mm, 48mm, 51mm, 60mm	38mm, 42mm, 45mm, 48mm, 51mm, 60mm