

MORE

SIMPLE • RELIABLE • VALUE

DST2420 Wheel Balancer

SKU# 5140156



Includes **FREE** Wheel Weights

BALANCED PERFORMANCE
PROVEN RESULTS

Extreme Accuracy, Speed & Reliability in a Wheel Balancer

The Ranger DST2420 wheel balancer handles wheels up to 30" in diameter. It is a highly accurate and dependable no-frills balancer that features our proprietary Digital Sensor Technology for critical reliability and repeatability. From one-bay shops to high-volume garages, the DST2420 is built with a gritty toughness that produces perfectly balanced wheels day after day. Like all of our DST Series wheel balancers, it's a precision-engineered performer featuring our proven Direct-Axis drive system, accurate to within 0.01 oz., ensuring wheels are balanced vibration-free.

The DST2420 automatically calculates the exact weight needed to achieve an optimal balance for almost every tire and wheel configuration possible. It also features bright display LEDs that mark the exact amount and location in just six seconds. A full menu of time-saving features, including Dynamic, Static, and Performance Alloy settings, allows you to balance OEM wheel configurations and performance wheels with minimal effort and speed.

Highly Precise Digital Sensor Technology

Our advanced Digital Sensor Technology utilizes a high-speed, single-chip microprocessor to deliver exceptional accuracy, faster cycle times, and consistent repeatability—especially when performing complex balance and weight placement on today's high-tech OEM and aftermarket wheels.

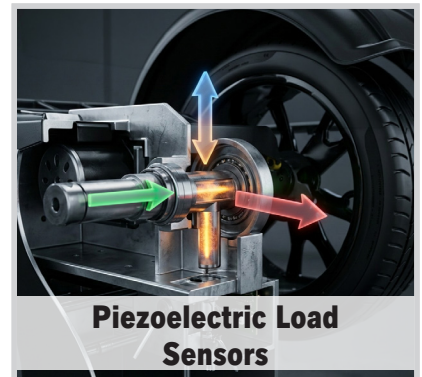
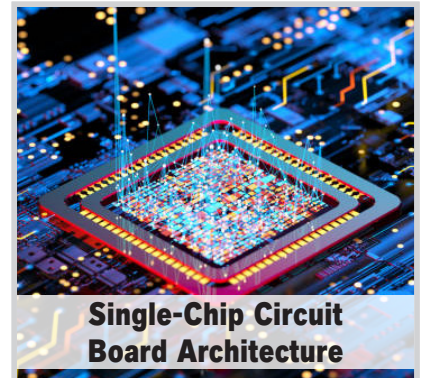
Single-chip circuit board architecture provides an inherent performance and reliability advantage compared to multi-chip designs of the same functionality. In addition to overall latency reductions, the single-chip architecture significantly boosts device throughput. An extremely fast and dedicated hyper transport protocol allows data to communicate with the micro-processor at much faster speeds. This solution offers an unmatched integration of features and functionality that results in both lower power consumption and dissipated heat.

Multi-Directional Quartz Piezoelectric Load Sensors

Dual-component piezoelectric quartz load sensors and digital rotation encoder measure longitudinal, transversal and shear effects for multi-directional force unbalance detection. The piezoelectric force sensors are the most sensitive sensors we have ever made, offering superior stability and fatigue resistance for unlimited service life with your wheel balancer. The high-rigidity quartz crystal sensors offer high-frequency detection in all three measured directions.

Quick and Precise Setup

Multi-size center collets and a full rubber perimeter no-mar "Quick-Nut" bell adapter allow for fast, secure wheel mounting while minimizing the risk of costly damage. Designed for speed and efficiency, the system reduces setup time and ensures precise centering—helping shops move more jobs through the bay with confidence.



Mounting Collet Package

The DST2420 tooling package not only includes our standard car and light truck collets, but also a heavy-duty truck collet. This well-equipped package includes three automotive and light truck collets: 2" - 2.75", 2.5" - 3.25", 3" - 3.8", and 3.7" - 4.4" as well as one truck collet 4.5" - 5".

Automatic Weight Optimization

The DST2420 automatically calculates the minimum amount of weight needed to achieve an optimal balance for the tire and wheel configuration, so you use less weight. This adds up to real savings and increases your bottom line.

User-Friendly Operation

A touch-pad display panel features tire and wheel assembly graphics to help simplify speed entry of wheel data and guide technicians through balancing procedures. Operator function keys are labeled with simple, easy-to-read icons to help operators identify and command all balancing functions.

LED Rolling Wheel Weight Displays

Bright LED weight placement indicators show weight positions as the wheel is gently rolled to the exact top-dead-center. Tiered weight placement indicators help identify out-of-sight weight placement, such as split-weight or hidden "behind-the-spoke" techniques. Aids with clip-on and tape weight placement at precise locations for zero-on balancing every time.

Wheel Weight Starter Kit

A free kit of wheel weights is included with the DST2420 along with a built-in tape weight feeder and storage compartment. Each unit's starter kit contains one bulk roll of 100 silver adhesive steel tape weights, one bulk roll of 100 black adhesive steel tape weights and one starter box of mixed clip-on steel weights. It's our way of getting you off on the right foot. Additional Ranger wheel weights are available for purchase at any time.

Ample Storage

Integrated weight trays, cone hangers, and tool holders keep DST-2420 accessories organized and within reach. Everything stays on the machine; reducing clutter, speeding workflows, and keeping high-volume truck balancing efficient and repeatable.

Tape Weight Feeder

An integrated open-top feeder on the side shelf keeps Ranger Quick-Peel™ adhesive weights within easy reach, speeding up weight placement and minimizing downtime between jobs. Designed for efficiency in high-volume environments. (Weights sold separately in bulk rolls.)



Storage Shelf & Collet Hangers



User-Friendly Operations



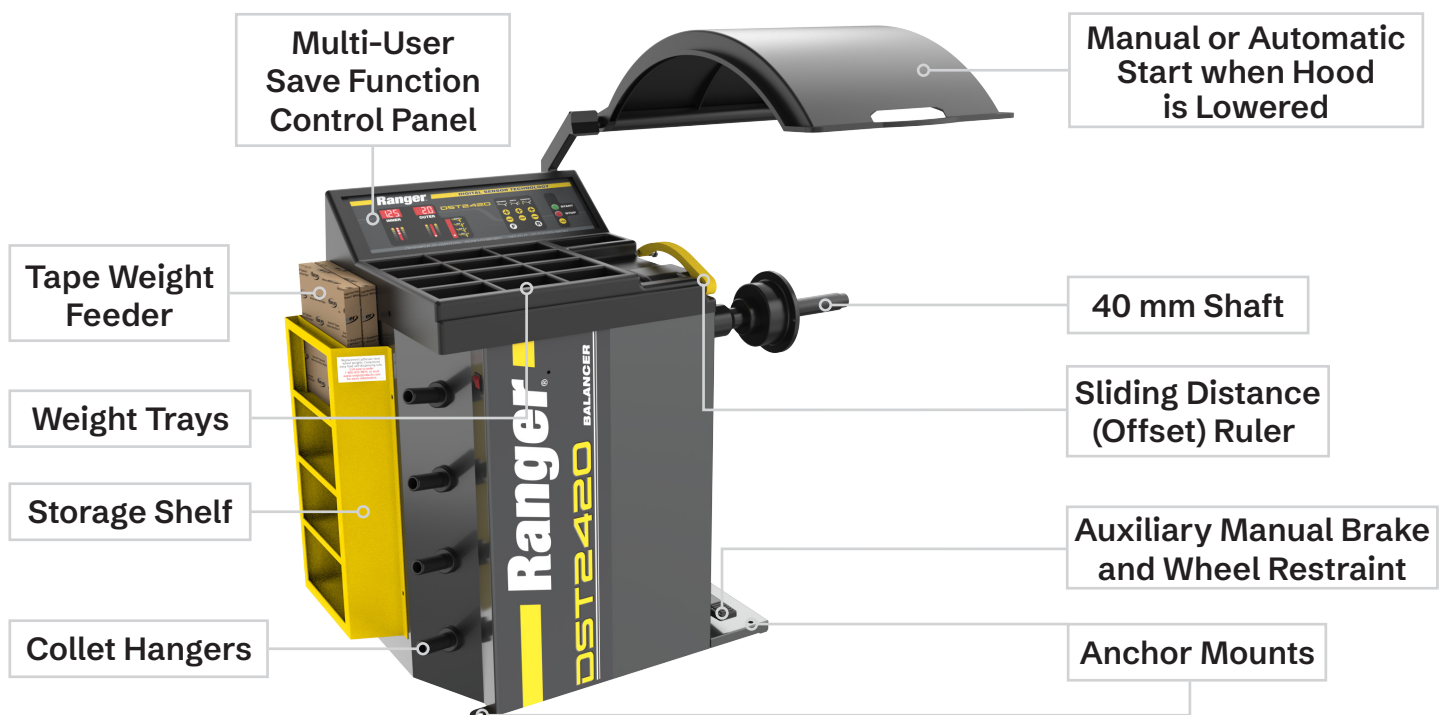
Quick Wheel Data Measuring



Tape Weight Feeder Storage

ENHANCED FEATURES

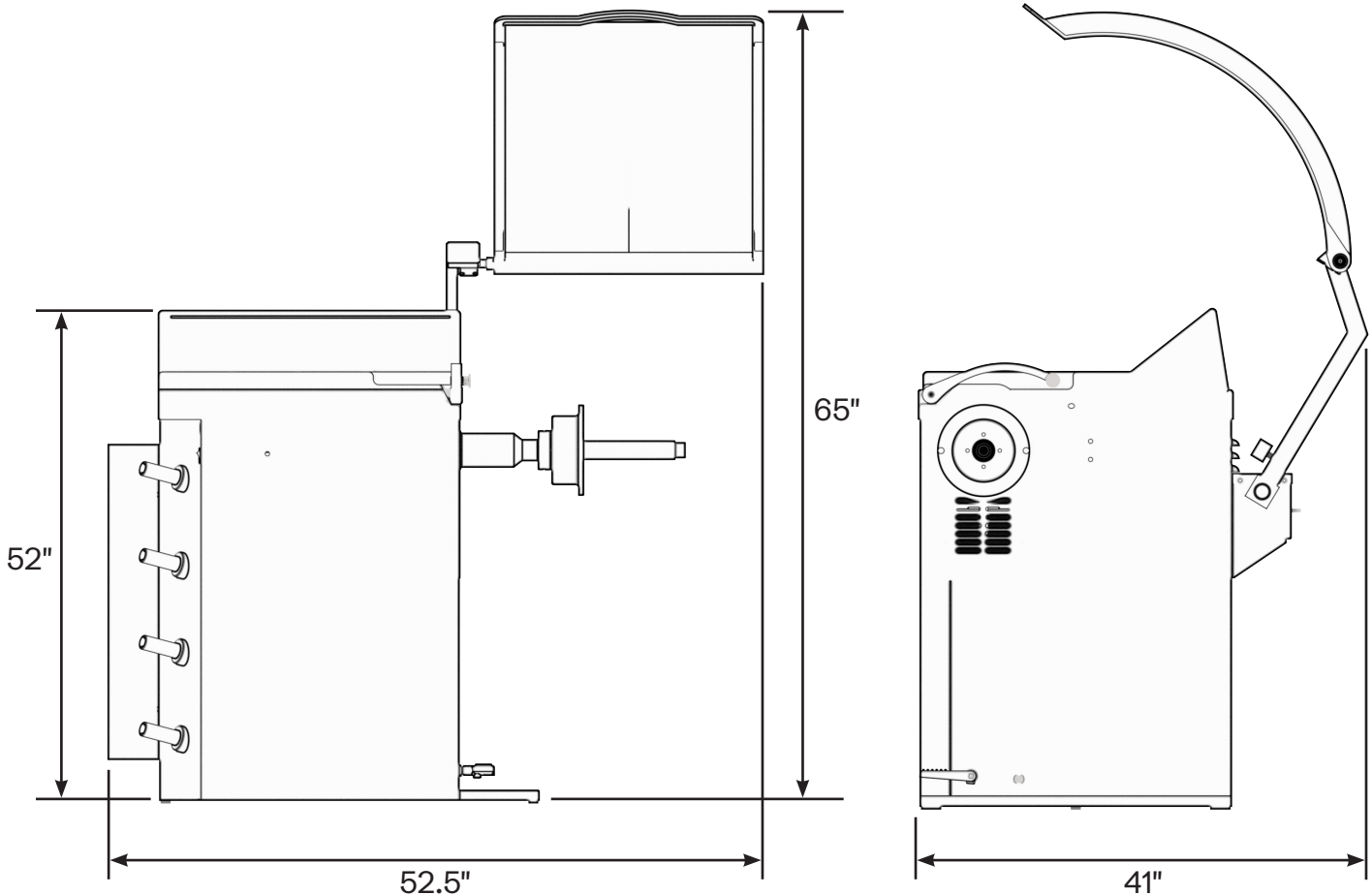
- **Dynamic, Static, and Performance Alloy** settings
- **A multi-user save function** holds presets to increase productivity
- **An ergonomic control board** and easy-to-read LED display have vibrant visual cues and a keypad to improve efficiency and proper balancing techniques for faster floor-to-floor times
- **Simple wheel data entry** for precise distance, diameter, and width measurements
- **Precise and accurate rolling wheel weight readings displays** exact weight needed saving valuable time and minimizing errors
- **Low RPM balancing speed** and rapid six-second cycle time
- **Automatic braking & Self-calibration function**
- **Gram/ounce selection and millimeter/inch selection**
- **Automatic round-off** with top-dead-center weight position indicator
- **Tiered weight placement indicators** help identify out-of-sight position weight placement such as split-weight or hidden “behind-the-spoke” techniques
- **Manual or automatic start** when the hood is lowered
- **High-volume top weight tray and side shelf storage** give you room to inventory a wide variety of wheel weights and tools
- **Newly designed side shelf** features an open-top design that accommodates Ranger Quick-Peel™ adhesive tape weight convenient bulk rolls
- **Integrated tape weight feeder storage** keeps adhesive weights neatly organized and immediately accessible at the balancer, reducing reach time and workflow interruptions while improving overall balancing efficiency
- **Rugged 40 mm shaft** makes the balancer stiffer, more accurate, and better suited for modern heavier wheels, while also supporting industry-standard cones and accessories
- **Quick-release hub nut** for dramatically reduced set-up times
- **Side-position restraint pedal** holds wheels securely and accurately during weight installation procedures
- **Side collet storage pegs** keep accessories readily available
- **New “open-side” hood design** allows for a broader coverage of tire shapes and sizes



SPECIFICATIONS

Model	DST2420 Wheel Balancer
Voltage	115 - 230V, 50/60 Hz, 1 Ph*
FLA (amps)	7
Working Temperature	23°F to 104°F (-5°C to 40°C)
Tire Diameter	47" (1,194 mm)
Max. Wheel Weight	145 lbs. (66 kg)
Wheel Diameter Min - Max	8" to 30" (204 mm to 762 mm)
Wheel Width Min - Max	2" to 18" (51 mm to 458 mm)
Balancing Increments	0.25 oz. (5 grams)
Height, Hood Up	65" (1,651 mm)
Height, Hood Down	52" (1,321 mm)
Width	52.5" (1,334 mm)
Depth	41" (1,042 mm)
Unit / Shipping Weight	297 lbs. (135 kg) / 362 lbs. (165 kg)

*Note: Standard electrical configurations shown. Additional voltage options available upon request.



STANDARD ACCESSORIES

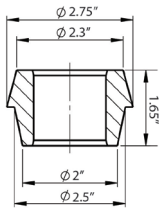
Precision Collet Mounting for Increased Accuracy

Collets center wheels more precisely by engaging the hub bore, reducing imbalances caused by improper positioning. Traditional cones cover a wide range of sizes with fewer pieces but use steep angles that can compromise centering accuracy. Collets use flatter angles for a more exact fit. They also apply more even pressure across the hub, helping prevent damage while improving mounting consistency, balance accuracy, and reducing manual adjustments and human error.

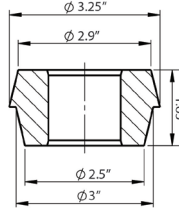


ALL INCLUDED ACCESSORIES

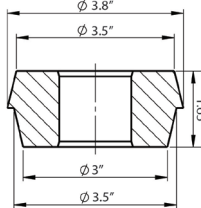
2" - 2.75" Collet



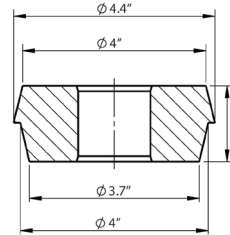
2.5" - 3.25" Collet



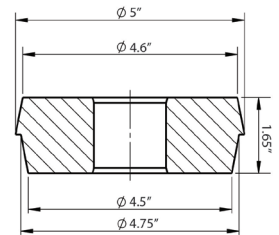
3" - 3.8" Collet



3.7" - 4.4" Collet



4.5" - 5" Collet



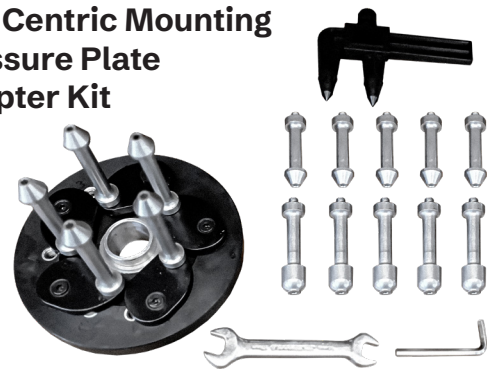
OPTIONAL ACCESSORIES



RWL175
175 lb Capacity
Pneumatic Wheel Lift



Lug-Centric Mounting Pressure Plate Adapter Kit



Adhesive Steel Wheel Weight COMBO Set
SKU 5150230

SILVER Adhesive Steel Wheel Weights
SKU 5150220

BLACK Adhesive Steel Wheel Weights
SKU 5150225

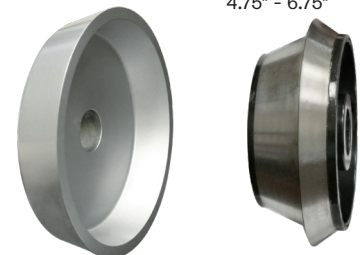


Wheel Weight Dispenser Stand
Stand Only - SKU 5328502
Stand Kit - SKU 5150028
• Stand and Weights



Truck Cone Kit
36mm - SKU 5150555
40mm - SKU 5150032

• Double-sided centering cone fits hub sizes 4.75" - 6.75"



Disclaimer: Specifications, features, and options are subject to change without notice. Illustrations may show optional equipment or accessories sold separately. Maximum wheel sizes, weights, and capacities are approximate and may vary depending on wheel type, condition, and application. Always follow manufacturer guidelines and local safety regulations when operating equipment.