

# HDS-27



# BendPak®

## Four-Post Lifts

SKU# 5175162

27,000-lb. Capacity, Heavy-Duty Truck Lift, Extended Ramps

Questions? Contact BendPak's Sales Team

sales@bendpak.com | 1-800-253-2363

Monday - Friday, 7AM to 4:30PM PST

## Construction, Municipal and Commercial Vehicles Welcome

This is where our lifts really step into the next level of lifting. If you need a bigger, better [four-post lift](#) that can handle a 27,000-lb., Class 7 semi-truck, you need the HDS-27. Bigger sheaves and beefier components carry on our legacy of dependability. If your shop services commercial and/or municipal vehicles, a lift of this stature is practically mandatory. Get your hands on this utterly massive truck lift and bring a higher level of service to your garage or shop.



## Choose Extended Length

SKU#	Model	Description
5175164	HDS-27X	Extended Length

## Features

- 27,000-lb. lifting capacity
- Extended length runways available
- Includes 48" extended steel approach ramps
- Supersized 12" diameter cable sheaves
- Stainless steel lifting cables
- Grease nipples
- Single hydraulic under-runway cylinder
- Integrated flow restrictor
- Durable powder coat
- Spring-loaded safety locks
- Second lock system on constant guard
- Fully enclosed lifting cables
- Multiple adjustable height locking positions
- Maintenance-free electric hydraulic power system
- Conveniently positioned operator controls
- 12" x 12" base plates
- Runways feature a durable matte finish
- Optional rolling jacks

Note: An air supply (minimum 30 psi / 3 CFM) is required for the safety-lock mechanisms to disengage. It is solely the responsibility of the end-user to provide, install and maintain the air supply.

Not all BendPak lift models meet the standards as prescribed by ANSI/ALI ALCTV-2017 or ANSI/UL 201. Consult [www.autolift.org](http://www.autolift.org) for a complete list or contact BendPak via [contact@bendpak.com](mailto:contact@bendpak.com).

### Extended Runways

We extend the runways on our heavy-duty truck lifts to keep your cargo safe. Steep ramps sometimes cause drivers to accidentally hit the pedal too hard and overshoot their target. A gradual climb maximizes loading and unloading convenience, as well as safety.

### Dual-hub cable sheaves

Simply put, bigger sheaves and sheave axles make for a sturdier, safer and more powerful car lift. We build our four-post lift sheaves 12" in diameter, accompanied by 4" diameter sheave axles. You can expect low-maintenance and high-functioning parts for many years to come.

### Heavy-duty aircraft cable

Our 1/2" diameter, 6 x 25 stainless-steel lifting cables have a 14,000-lb. breaking strength per cable. The four cables alone, without the hydraulic cylinder, offer more than enough power to safely lift your 35,000-lb. truck. We over-engineer our components and proudly wear our ALI Certification on the columns of our four-post lifts for all the world to see.

### Built-in lubrication

Grease nipples are useful devices because they make the HDS-27 a self-lubricating, auto-maintaining powerhouse. This massive car lift reduces your costs by giving you quality parts, like self-lubricating sheaves, which require only periodic attention.

### Large base plates

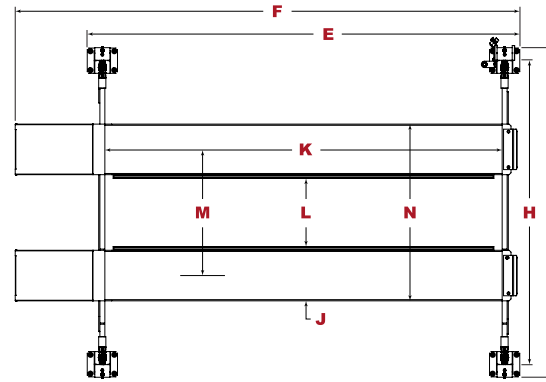
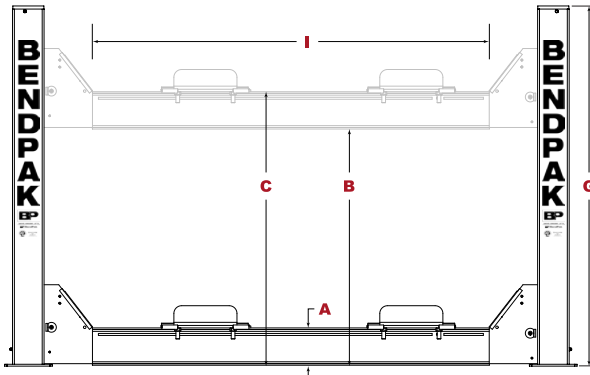
Truck lift base plates are made a little wider than the bases of our lighter-duty four-post lift models: 12" x 12" plate dimensions are sturdy and can be easily bolted into suitable concrete flooring for years.

# BendPak®



30440 Agoura Road Agoura Hills, CA 91301 USA

© 2023 BendPak Inc. All rights reserved.



# HDS-27

# BendPak®



Model	HDS-18E	HDS-27	HDS-27X
SKU#	5175968	5175162	5175164
Lifting Capacity	18,000 lbs. (8,165 kg)	27,000 lbs. (12,247 kg)	27,000 lbs. (12,247 kg)
A - Min. Runway Height	9.5" (241 mm)	9.5" (241 mm)	9.5" (241 mm)
B - Max. Rise	61.25" (1,559 mm)	61.25" (1,559 mm)	61.25" (1,559 mm)
C - Max. Lifting Height	69.5" (1,765 mm)	69.5" (1,765 mm)	69.5" (1,765 mm)
D - Overall Width	153.5" (3,899 mm)	153.5" (3,899 mm)	153.5" (3,899 mm)
E - Outside Length	257" (6,528 mm)	257" (6,528 mm)	317.5" (8,065 mm)
F - Overall Length	312.75" (7,944 mm)	312.75" (7,944 mm)	372.75" (9,468 mm)
G - Height of Columns	91.25" (2,318 mm)	91.25" (2,318 mm)	91.25" (2,318 mm)
H - Width Between Columns	133.5" (3,391 mm)	133.5" (3,391 mm)	133.5" (3,391 mm)
I - Drive-Thru Clearance	109" (2,769 mm)	109" (2,769 mm)	109" (2,769 mm)
J - Runway Width	22" (559 mm)	22" (559 mm)	22" (559 mm)
K - Length of Runways	257.5" (6,541 mm)	257.5" (6,541 mm)	317.5" (8,065 mm)
L - Width Between Runways	40" (1,016 mm) or 45.25" (1,151 mm)	40" (1,016 mm) or 45.25" (1,151 mm)	40" (1,016 mm) or 45.25" (1,151 mm)
M - Runway Centerline	67.25" (1,708 mm) or 72.5" (1,842 mm)	67.25" (1,708 mm) or 72.5" (1,842 mm)	67.25" (1,708 mm) or 72.5" (1,842 mm)
N - Outside Edge of Runways	89.25" (2,266 mm) or 94.5" (2,400 mm)	89.25" (2,266 mm) or 94.5" (2,400 mm)	89.25" (2,266 mm) or 94.5" (2,400 mm)
Min Wheelbase @ Rated Capacity	145" (3,683 mm)	185" (4,699 mm)	230" (5,842 mm)
Min Wheelbase @ 75% Capacity	125" (3,175 mm)	160" (4,064 mm)	195" (4,953 mm)
Min Wheelbase @ 50% Capacity	105" (2,667 mm)	135" (3,429 mm)	165" (4,191 mm)
Min Wheelbase @ 25% Capacity	85" (2,159 mm)	110" (2,794 mm)	130" (3,302 mm)
Locking Positions	13	13	13
Lock Spacing	every 4" (100 mm)	every 4" (100 mm)	every 4" (100 mm)
Lifting Time	75 sec	75 sec	75 sec
Motor	220 VAC / 60 Hz / 1 Ph	220 VAC / 60 Hz / 1 Ph	220 VAC / 60 Hz / 1 Ph

An air supply (minimum 30 psi / 3 CFM) is required for the safety-lock mechanisms to disengage. It is solely the responsibility of the end-user to provide, install and maintain the air supply.

Not all BendPak lift models meet the standards as prescribed by ANSI/ALI ALCTV-2017 or ANSI/UL 201. Consult [www.autolift.org](http://www.autolift.org) for a complete list or contact BendPak via [contact@bendpak.com](mailto:contact@bendpak.com).