

Tesla Jack Pucks (5216357) – Quick Start Guide



DANGER! Never work with an unbalanced vehicle on a Jack. Working on an unbalanced vehicle may cause property damage, severe injury, or death.

DANGER! Tesla Models with air suspension require the vehicle to be put into “**JACK MODE**” to prevent the vehicle from attempting to correct an out-of-level condition. Failure to do so may cause vehicle damage, severe injury, or death.

WARNING! Never attempt to lift the vehicle from under the battery.

WARNING! Disconnect the charging cable from the charge port before lifting the vehicle.

WARNING! Jack the vehicle from the manufacturer’s designated Jack Points **ONLY**. Damage to the vehicle and/or severe injury may result when lifting from any other point on the vehicle. **Always Jack in accordance with the vehicle owner’s manual.**

Compatible models:

- Tesla Model S
- Tesla Model 3
- Tesla Model X
- Tesla Model Y

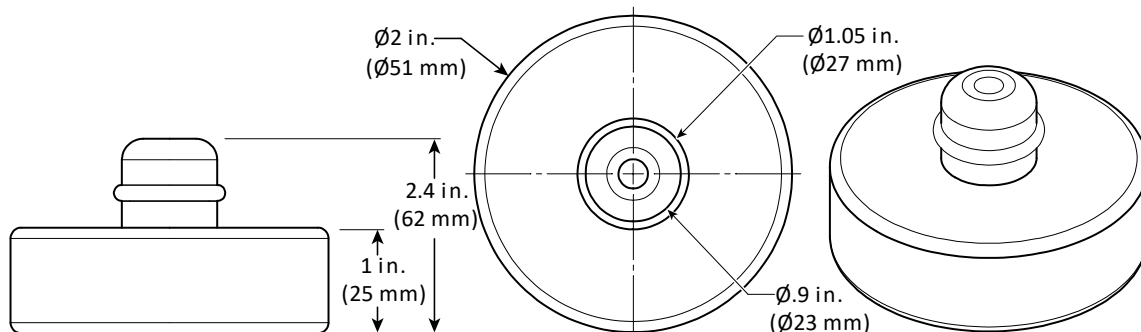


Using the Jack Pucks:

You are responsible for safely Jacking the vehicle.

- Ensure the vehicle is on level ground – chock the wheels and engage the parking brake.
- Verify the surface under the vehicle is capable of supporting the weight of the Jack and the vehicle. Level, unbroken concrete is recommended.
- Ensure the area around the vehicle is clear.
- Do **NOT** Jack a vehicle with people inside.
- Close the hood, trunk, and all doors.
- Put the vehicle into “**Jack Mode**,” if required.
- Use the correct Jack Puck for the vehicle.
- Push to install the Tesla Jack Puck (5216357) into the vehicle’s Jack Point. Consult the vehicle owner’s manual for Jack Point locations.
- Move the Jack into position directly under the Jack Puck and carefully raise the Jack until it just touches the Puck.
- Ensure the Jack Puck will ride securely on the Jack without slipping out.
- Slowly and carefully raise the vehicle.
- Never work on a vehicle that is unstable on the Jack.
- Carefully lower the vehicle after completing the work and move the vehicle jack out of the area.
- Remove the Jack Puck by pulling straight down.

Always remove the Jack Puck from the vehicle after use. The Jack Puck is not designed to be permanently installed in the vehicle’s Jack Points.



Specifications:

Material: Hard Rubber 90D Shore

Rated Capacity on each Jack Puck: 1,750 lbs. (794 kg) max.

Rated Vehicle Jacking Capacity: One Jack Puck supporting each factory recommended Jack Point for a total 7,000 lbs. (3,175 kg) Max.

Rated Temperature Range: -40°F (-40°C) to +104°F (+40°C) max.

General Warnings and Cautions:

- **Always** refer to the vehicle owner's manual for the exact locations of the factory-recommended jacking points. Incorrect placement can result in the vehicle tilting or shifting, increasing the risk of it falling off the jack.
- **Never** place the jack puck or the jack itself on parts of the vehicle that are not designated as jacking points. Lifting from non-recommended areas can damage components and can lead to unsafe lifting conditions.
- **Ensure** the jack puck is rated for the weight of your vehicle. Exceeding the weight capacity can cause the puck to deform or fail, potentially leading to vehicle damage and/or severe injury.
- **Verify** that the jack puck fits your vehicle's specific jacking points. An improper fit can cause the vehicle to slip off the jack, leading to vehicle damage and/or severe injury.
- **Before placing the jack puck**, visually inspect the vehicle's jacking point for any existing damage or rust. A compromised jacking point may not support the vehicle's weight safely, even if it is the factory-recommended location.
- **Regularly inspect** the jack puck for any signs of wear, cracks, or other damage. Damaged pucks can fail under load, causing the vehicle to drop unexpectedly.
- **Position** the vehicle jack directly under the Jack Puck installed in the vehicle's jacking point. Misalignment can result in unstable jacking and possible vehicle damage or severe personal injury.
- **Ensure** they are properly attached and won't slip out of place during use. Some jack pucks are designed to attach securely to the jacking point or the jack itself.
- **Use** the jack puck on a flat, stable surface. Uneven or slippery surfaces can cause the jack to tip or move unexpectedly, which can be dangerous.
- **Avoid** using the jack pucks in conditions that are too hot or too cold, as this can affect their structural integrity. Rubber and urethane materials can be sensitive to extreme temperatures.
- **Keep** the jack pucks away from harsh chemicals, oils, and solvents that can degrade the material, reducing its effectiveness and lifespan.
- **Do not attempt** to overextend the jack lifting height beyond its rated limit by using multiple stacked pucks, or other non-OEM approved adapters. This can create instability and increase the risk of vehicle damage and/or severe personal injury.

