

HDS-40X



Four-Post Lifts

SKU# 5175178

40,000-Lb. Capacity, Heavy-Duty Truck Lift / Extended

Questions? Contact BendPak's Sales Team

sales@bendpak.com | 1-800-253-2363

Monday - Friday, 7AM to 4:30PM PST

The Only Heavy-Duty Truck Lift You'll Ever Need

40,000 lbs. take a lot of muscle to lift, and many vehicles of this caliber are longer than our standard-length series of four-post lifts can accommodate. If you want to be prepared for the longest and heaviest, you need the biggest and baddest. At a whopping 310", the HDS-40X is the heaviest-duty extended-length [four-post lift](#) we make. Slap a bus on it and get to work, no sweat.



Choose Standard Length

SKU#	Model	Description
5175176	HDS-40	Standard Length

Features

- 40,000-lb. lifting capacity
- Standard length runways available
- Includes 48" extended steel approach ramps
- Supersized 12" diameter cable sheaves
- Stainless steel lifting cables
- Grease nipples
- Single hydraulic under-runway cylinder
- Integrated flow restrictor
- Durable powder coat
- Spring-loaded safety locks
- Second lock system on constant guard
- Fully enclosed lifting cables
- Multiple adjustable height locking positions
- Maintenance-free electric hydraulic power system
- Conveniently positioned operator controls
- 12" x 12" base plates
- Runways feature a durable matte finish
- Optional rolling jacks

Note: An air supply (minimum 30 psi / 3 CFM) is required for the safety-lock mechanisms to disengage. It is solely the responsibility of the end-user to provide, install and maintain the air supply.

Not all BendPak lift models meet the standards as prescribed by ANSI/ALI ALCTV-2017 or ANSI/UL 201. Consult www.autolift.org for a complete list or contact BendPak via contact@bendpak.com.

Extended Runways

We extend the runways on our heavy-duty truck lifts to keep your cargo safe. Steep ramps sometimes cause drivers to accidentally hit the pedal too hard and overshoot their target. A gradual climb maximizes loading and unloading convenience, as well as safety.

Dual-hub cable sheaves

Simply put, bigger sheaves and sheave axles make for a sturdier, safer and more powerful car lift. We build our four-post lift sheaves 12" in diameter, accompanied by 4" diameter sheave axles. You can expect low-maintenance and high-functioning parts for many years to come.

Heavy-duty aircraft cable

Our 1/2" diameter, 6 x 25 stainless-steel lifting cables have a 14,000-lb. breaking strength per cable. The four cables alone, without the hydraulic cylinder, offer more than enough power to safely lift your 35,000-lb. truck. We over-engineer our components and proudly wear our ALI Certification on the columns of our four-post lifts for all the world to see.

Built-in lubrication

Grease nipples are useful devices because they make the HDS-40X a self-lubricating, auto-maintaining powerhouse. This massive car lift reduces your costs by giving you quality parts, like self-lubricating sheaves, which require only periodic attention.

Large base plates

Truck lift base plates are made a little wider than the bases of our lighter-duty four-post lift models: 12" x 12" plate dimensions are sturdy and can be easily bolted into suitable concrete flooring for years.

HDS-40X



Four-Post Lifts

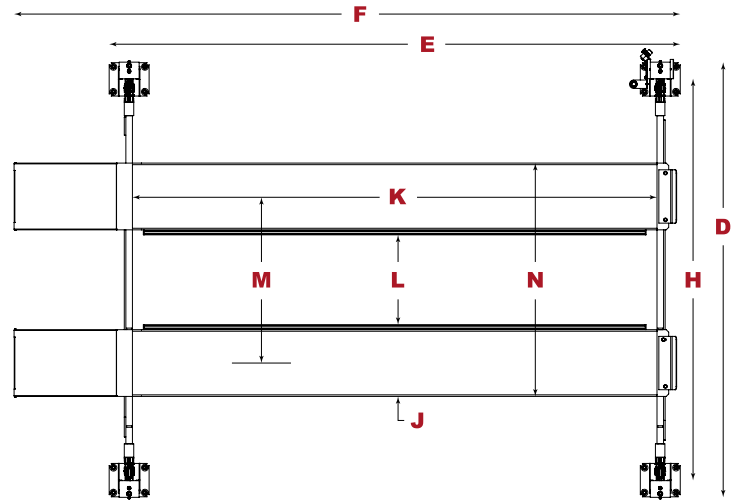
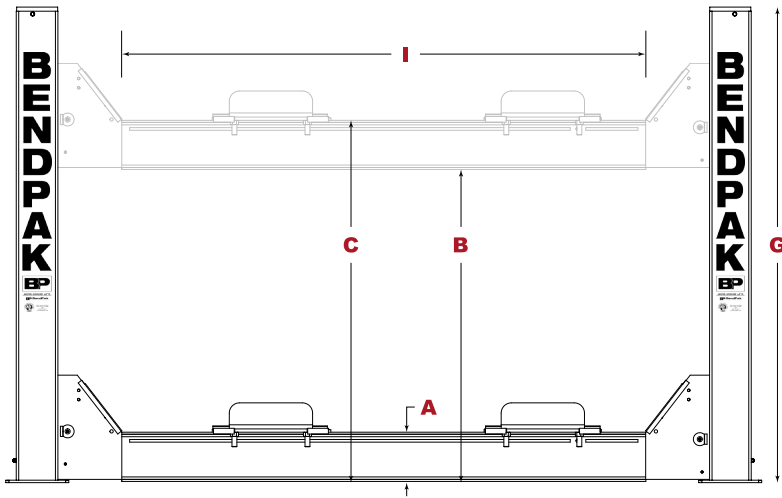
SKU# 5175178

40,000-Lb. Capacity, Heavy-Duty Truck Lift / Extended

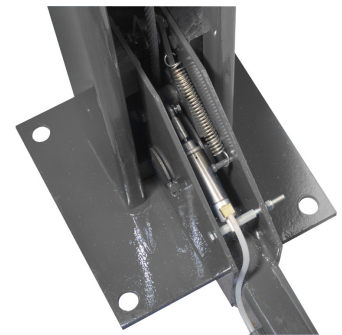
Questions? Contact BendPak's Sales Team

sales@bendpak.com | 1-800-253-2363

Monday - Friday, 7AM to 4:30PM PST



Model	HDS-40	HDS-40X
SKU#	5175176	5175178
Lifting Capacity	40,000 lbs. (18,144 kg)	40,000 lbs. (18,144 kg)
A - Min. Runway Height	8.5" (216 mm)	8.5" (216 mm)
B - Max. Rise	60" (1,524 mm)	60" (1,524 mm)
C - Max. Lifting Height	68.5" (1,740 mm)	68.5" (1,740 mm)
D - Overall Width	153.5" (3,899 mm)	153.5" (3,899 mm)
E - Outside Length	257" (6,528 mm)	317" (8,052 mm)
F - Overall Length	313.75" (7,969 mm)	373.5" (9,487 mm)
G - Height of Columns	91.25" (2,318 mm)	93" (2,362 mm)
H - Width Between Columns	133.5" (3,391 mm)	134" (3,404 mm)
I - Drive-Thru Clearance	109" (2,769 mm)	109" (2,769 mm)
J - Runway Width	28" (711 mm)	28" (711 mm)
K - Length of Runways	244.5" (6,210 mm)	304.5" (7,734 mm)
L - Width Between Runways	41" (1,041 mm)	41" (1,041 mm)
M - Runway Centerline	69" (1,753 mm)	69" (1,753 mm)
N - Outside Edge of Runways	97" (2,464 mm)	97" (2,464 mm)
Min Wheelbase @ Rated Capacity	185" (4,699 mm)	230" (5,842 mm)
Min Wheelbase @ 75% Capacity	160" (4,064 mm)	195" (4,953 mm)
Min Wheelbase @ 50% Capacity	135" (3,429 mm)	165" (4,191 mm)
Min Wheelbase @ 25% Capacity	110" (2,794 mm)	130" (3,302 mm)
Locking Positions	9	9
Lock Spacing	every 6" (152 mm)	every 6" (152 mm)
Lifting Time	75 sec	75 sec
Motor	220 VAC / 60 Hz / 1 Ph	220 VAC / 60 Hz / 1 Ph



An air supply (minimum 30 psi / 3 CFM) is required for the safety-lock mechanisms to disengage. It is solely the responsibility of the end-user to provide, install and maintain the air supply.

Not all BendPak lift models meet the standards as prescribed by ANSI/ALI ALCTV-2017 or ANSI/UL 201. Consult www.autolift.org for a complete list or contact BendPak via contact@bendpak.com.