

Service Manual

SERVICE PARTS & DIAGRAMS

BENDPAK

XPR-12FDL

PRODUCT SKU
5175403

DRAWING Nº
5260568

CATEGORY
Two Post Lift

REV
Version X

DATE
02.15.2022



BendPak.

This guide is a troubleshooting reference used for maintaining and servicing your Bend Pak product. It provides comprehensive information on identifying serviceable parts and components and assists in troubleshooting problems and performing assembly /disassembly procedures.

BendPak, Inc. Corporate Office

1645 Lemonwood Drive
Santa Paula, CA 93060 USA
Toll Free US/Canada: 1-800-253-2363
Fax: 1-805-933-9160
info@bendpak.com

Customer Service Desk / Warranty

Customer Service Representatives
Office Tel: 1-805-933-9970
Toll Free US/Canada: 1-800-253-2363
Fax: 1-805-933-9160
customerservice@bendpak.com

Parts Orders

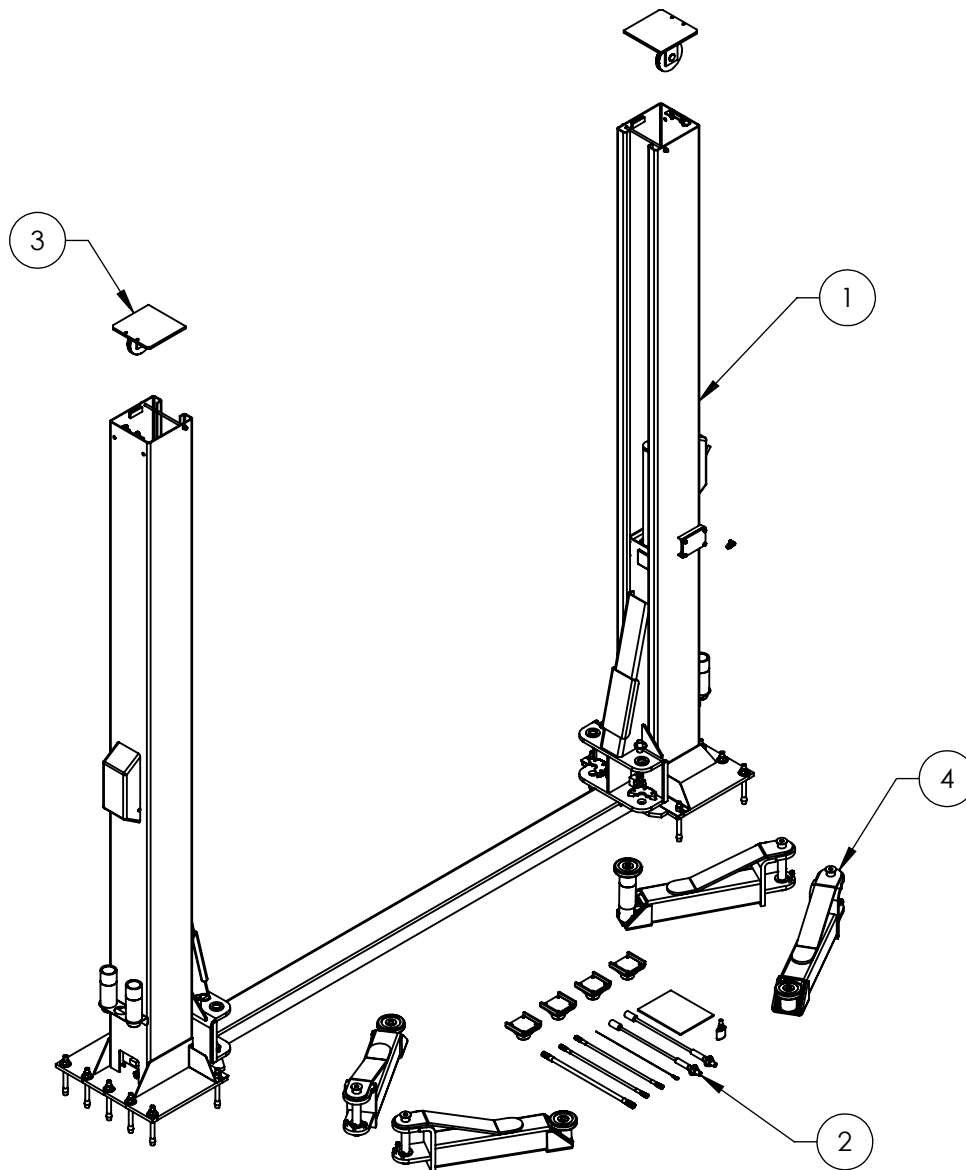
Customer Service Representatives
Office Tel: 1-805-933-9970
Toll Free US/Canada: 1-800-253-2363
Fax: 1-805-933-9160
parts@bendpak.com

Domestic Sales & Service

USA Sales Representatives
Office Tel: 1-805-933-9970
Toll Free US/Canada: 1-800-253-2363
Fax: 1-805-933-9160
sales@bendpak.com

International Sales & Service

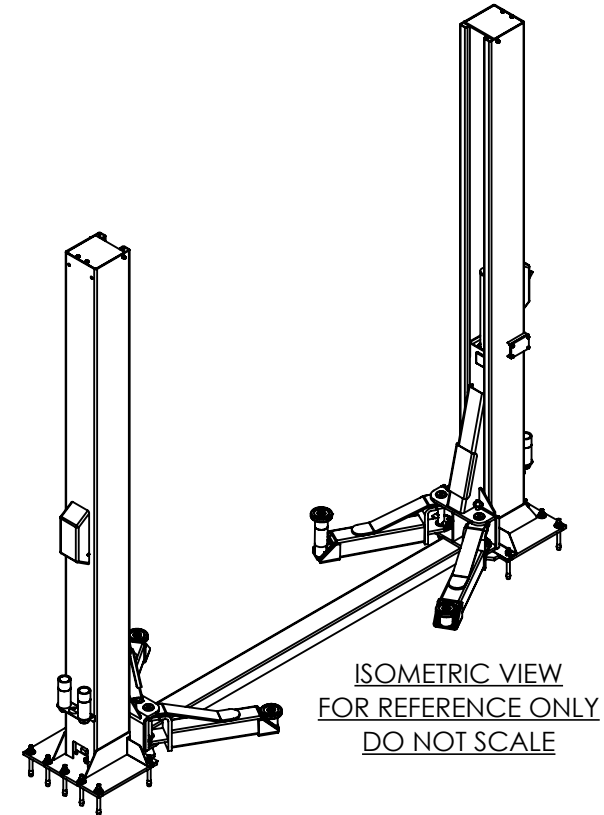
Office Tel: 1-805-933-9970
Exports Dept: 1-805-933-9970 EXT. 192
Ext. Toll Free US/Canada: 1-800-253-2363
Fax: 1-805-933-9160
bpkexports@bendpak.com






NOTE: UNLESS OTHERWISE SPECIFIED.

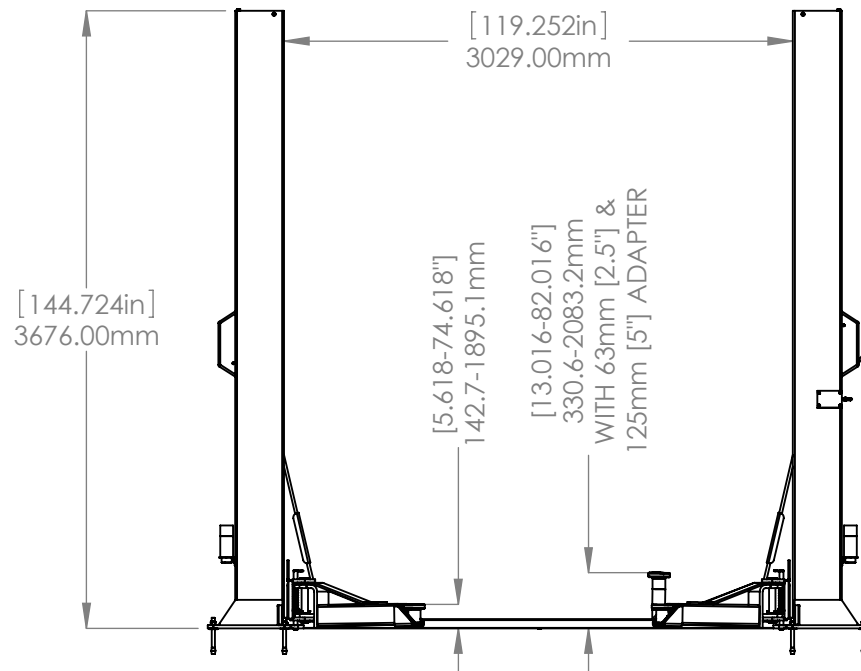
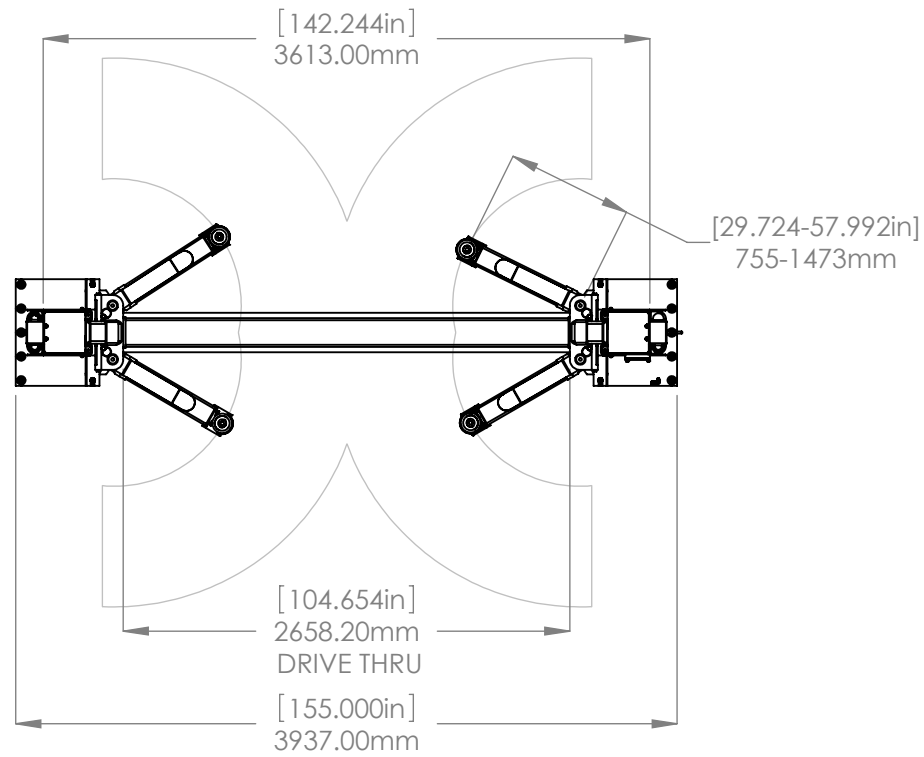
1. REFER TO MODEL FOR ADDITIONAL INFORMATION
2. SEE COLORS & GRAPHICS FOR LABEL PLACEMENT
3. SEE SHIPPING INSTRUCTIONS FOR FINAL PACKAGING


REVISION				
REV	DESCRIPTION	DATE	EDITED BY	ECO#
V	ADDED 5905775	08/09/2021	TM	01321
W	REPLACED LABELS WITH COLORS & GRAPHICS NOTE, UPDATED BOM REVISION	12/21/2021	CA	01371
X	OVERALL WIDTH WAS 154.5" NOW 155", UPDATED BOM REVISION	02/10/2022	CA	01392



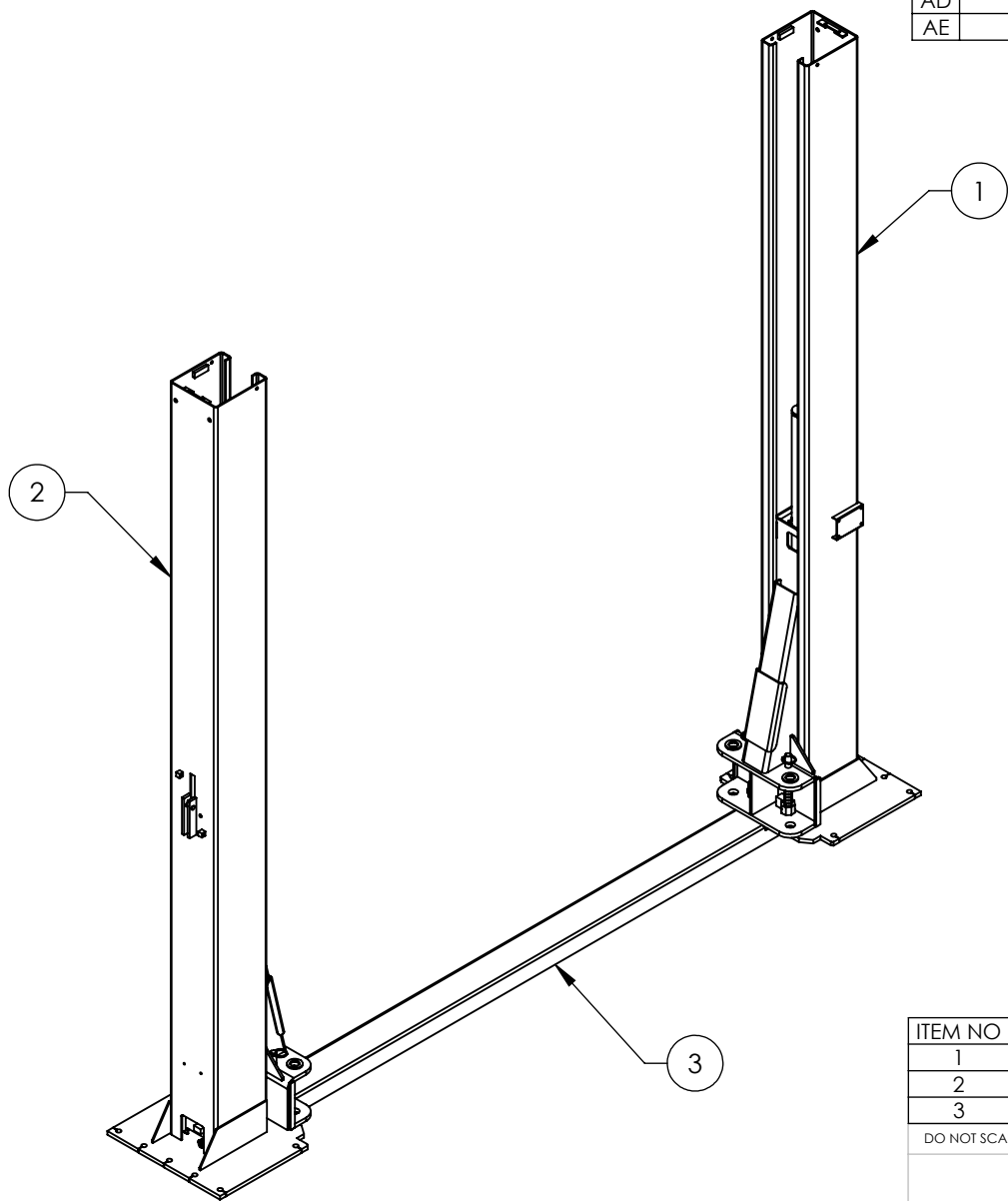
ITEM NO	PART NUMBER	DESCRIPTION	QTY	REV
1	5245137	XPR-12FDL LIFT SUPERSTRUCTURE	1	AE
2	5250263	XPR-12FDL PARTS BOX	1	F
3	5215376	XPR-12FD TOP EQUALIZER PULLEY PLATE ASSEMBLY	2	G
4	5215283	XPR-12CL/FDL TRIPLE TELESCOPING ARM ASSEMBLY	4	K

DO NOT SCALE DRAWING		NAME	DATE		
		DRAWN	TM	12/15/2015	
		CHECKED	OR	02/14/2022	
DIMENSIONS ARE IN MM		THIRD ANGLE PROJECTION		TITLE:	
				XPR-12FDL PRODUCTION LIFT VER E	
<p>PROPRIETARY AND CONFIDENTIAL</p> <p>THE INFORMATION CONTAINED IN THIS DRAWING IS THE SOLE PROPERTY OF BENDPAK INC. ANY REPRODUCTION IN PART OR AS A WHOLE WITHOUT THE WRITTEN PERMISSION OF BENDPAK INC. IS PROHIBITED.</p>		SIZE		DWG. NO.	REV
		A		5260568	X
		SCALE: 1:35			



		
1645 LEMONWOOD DR. SANTA PAULA, CA 93060		
TITLE: XPR-12FDL PRODUCTION LIFT VER E		
SIZE	DWG. NO.	REV
A	5260568	X
SCALE: 1:45		SHEET 2 OF 3

REVISION				
REV	DESCRIPTION	DATE	EDITED BY	ECO#
AC	UPDATED BOM REVISION	03/09/2020	TM	01107
AD	UPDATED BOM REVISION	12/21/2021	CA	01371
AE	UPDATED BOM REVISION	02/10/2022	CA	01392



ITEM NO	PART NUMBER	DESCRIPTION	QTY	REV
1	5215356	XPR-12FDL POWER SIDE POST ASSEMBLY	1	AD
2	5215233	XPR-12FDL OFF SIDE POST ASSEMBLY	1	AC
3	5210047	XPR-12FD GROUND PLATE	1	D

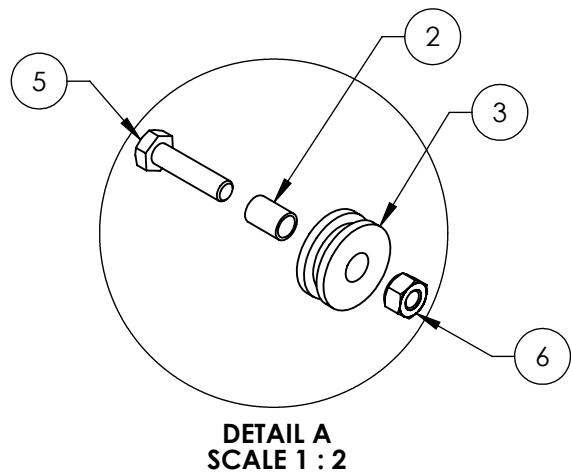
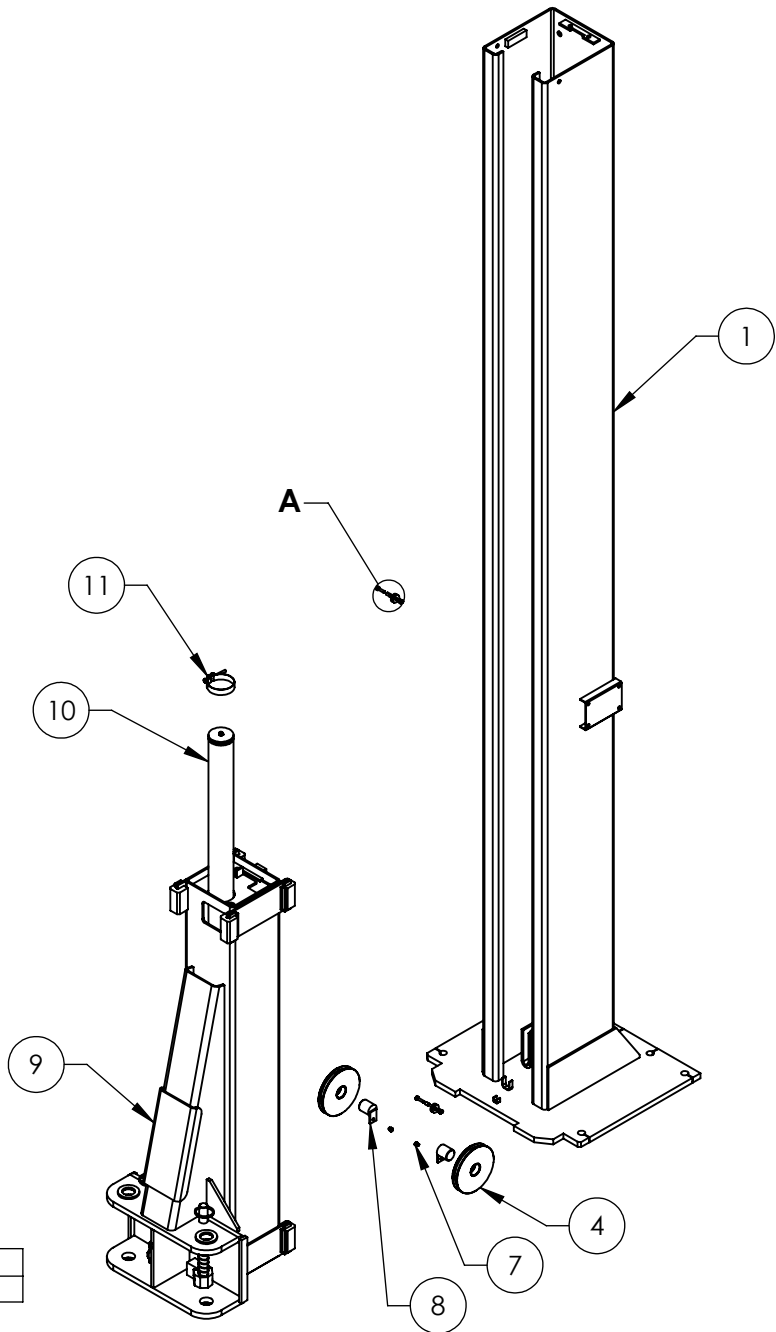
DO NOT SCALE DRAWING		NAME	DATE	 1645 LEMONWOOD DR. SANTA PAULA, CA 93060
DRAWN		TM	02/12/2010	
CHECKED		OR	02/14/2022	
DIMENSIONS ARE IN MM		THIRD ANGLE PROJECTION		TITLE:
 <small>PROPRIETARY AND CONFIDENTIAL THE INFORMATION CONTAINED IN THIS DRAWING IS THE SOLE PROPERTY OF BENDPAK INC. ANY REPRODUCTION IN PART OR AS A WHOLE WITHOUT THE WRITTEN PERMISSION OF BENDPAK INC. IS PROHIBITED.</small>				XPR-12FDL LIFT SUPERSTRUCTURE
		SIZE	DWG. NO.	REV
NEXT ASSEMBLY		A	5245137	AE
5260568		SCALE: 1:30		SHEET 1 OF 1

WHERE USED
XPR-12FDL

NOTE: UNLESS OTHERWISE SPECIFIED.

1. REFER TO MODEL FOR ADDITIONAL INFORMATION
2. SEE SHIPPING INSTRUCTIONS FOR FINAL PACKAGING

REVISION				
REV	DESCRIPTION	DATE	EDITED BY	ECO#
AB	UPDATED BOM REVISION	05/15/2019	TS	01086
AC	UPDATED BOM REVISION	03/09/2020	TM	01107
AD	UPDATED BOM REVISION	12/21/2021	CA	01371



ITEM NO	PART NUMBER	DESCRIPTION	QTY	REV
1	5600382	XPR-12FDL POWER SIDE POST WELDMENT	1	M
2	5565350	D2/GP/PCL/XPR/PL-7000 SAFETY SHEAVE SPACER	2	C
3	5575112	D2/GP/PCL/XPR/PL-7000 SAFETY SHEAVE	2	C
4	5575113	D2/XPR-12/15/18 SHEAVE ASSEMBLY	2	E
5	5530756	HHB M6 x 1.0 x 25mm	2	-
6	5535357	NUT M6 x 1.0 NL	2	-
7	5530030	HHB M6 x 1 x 8	2	-
8	5620142	D2-12/15, XPR-12C/12FD/15/18C CABLE SHEAVE PIN WELDMENT	2	A
9	5215290	XPR-12FD LIFT HEAD ASSEMBLY	1	T
10	5502305	CYLINDER ASSEMBLY Ø2.5 x 69	1	J
11	5701115	CYLINDER CLAMP ASSY-74-79	1	-

WHERE USED
XPR-12FDL

NOTE: UNLESS OTHERWISE SPECIFIED.

1. REFER TO MODEL FOR ADDITIONAL INFORMATION
2. SEE SHIPPING INSTRUCTIONS FOR FINAL PACKAGING
3. ASSEMBLE ITEMS AS SHOWN

NEXT ASSEMBLY
5245137

DO NOT SCALE DRAWING

DIMENSIONS ARE IN MM



NAME	DATE
DRAWN TM	11/19/2009
CHECKED OR	12/28/2021

THIRD ANGLE PROJECTION



PROPRIETARY AND CONFIDENTIAL
THE INFORMATION CONTAINED IN THIS DRAWING IS THE SOLE PROPERTY OF BENDPAK INC. ANY REPRODUCTION IN PART OR AS A WHOLE WITHOUT THE WRITTEN PERMISSION OF BENDPAK INC. IS PROHIBITED.

BendPak
1645 LEMONWOOD DR. SANTA PAULA, CA 93060

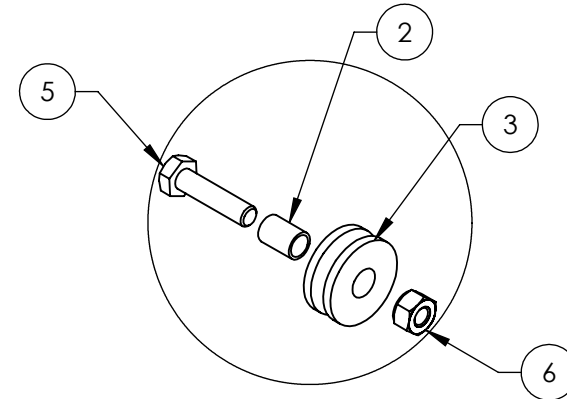
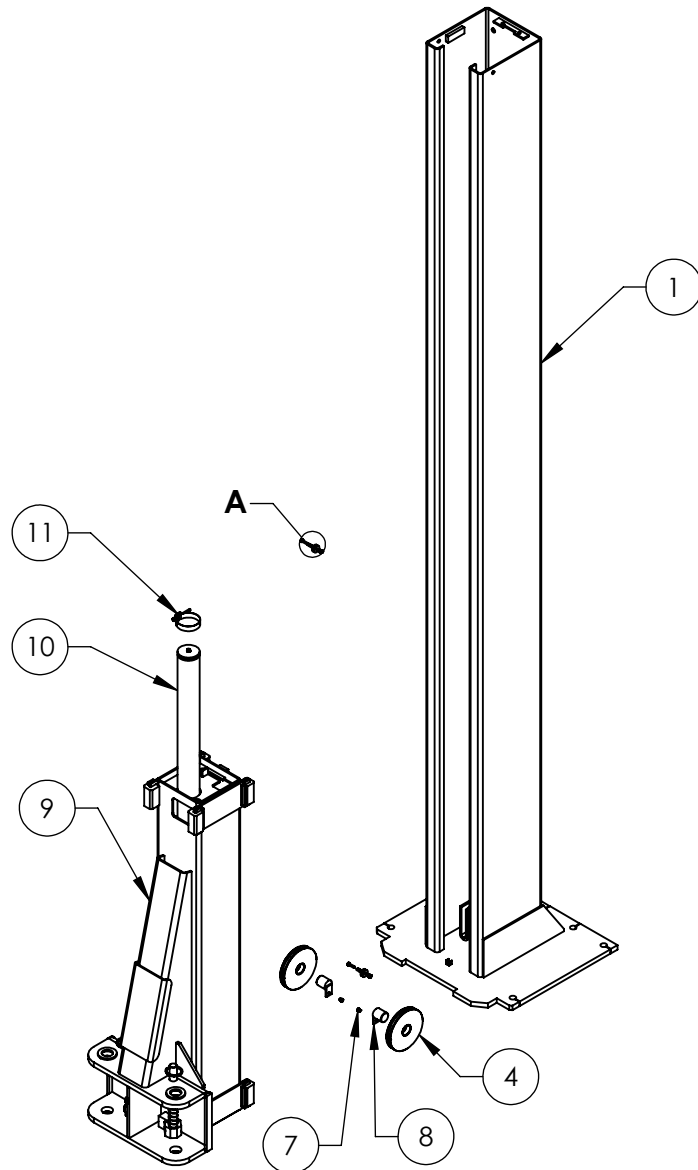
TITLE:
XPR-12FDL POWER SIDE
POST ASSEMBLY

SIZE	DWG. NO.	REV
A	5215356	AD

SCALE: 1:25

SHEET 1 OF 1

REVISION				
REV	DESCRIPTION	DATE	EDITED BY	ECO#
AA	UPDATED BOM REVISION	05/21/2019	TS	01086
AB	UPDATED BOM REVISION	03/06/2020	TM	01107
AC	UPDATED BOM REVISION	12/21/2021	CA	01371



DETAIL A
SCALE 1 : 2

ITEM NO	PART NUMBER	DESCRIPTION	QTY	REV
1	5600377	XPR-12FD OFF SIDE POST WELDMENT	1	K
2	5565350	D2/GP/PCL/XPR/PL-7000 SAFETY SHEAVE SPACER	2	C
3	5575112	D2/GP/PCL/XPR/PL-7000 SAFETY SHEAVE	2	C
4	5575113	D2/XPR-12/15/18 SHEAVE ASSEMBLY	2	E
5	5530756	HHB M6 x 1.0 x 25mm	2	-
6	5535357	NUT M6 x 1.0 NL	2	-
7	5530030	HHB M6 x 1 x 8	2	-
8	5620142	D2-12/15, XPR-12C/12FD/15/18C CABLE SHEAVE PIN WELDMENT	2	A
9	5215290	XPR-12FD LIFT HEAD ASSEMBLY	1	T
10	5502305	CYLINDER ASSEMBLY Ø2.5 x 69	1	J
11	5701115	CYLINDER CLAMP ASSY-74-79	1	-

WHERE USED
XPR-12FDL

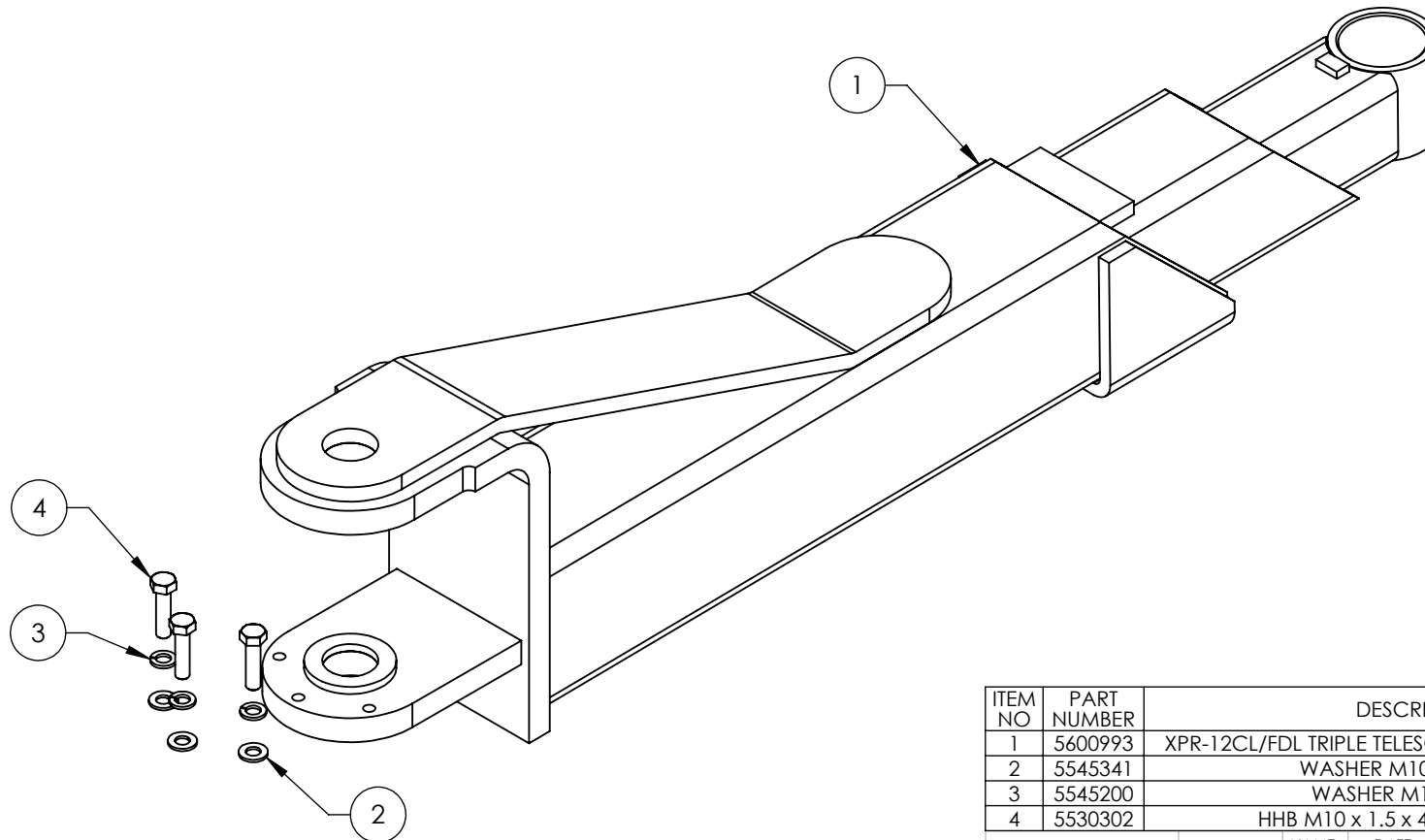
NOTE: UNLESS OTHERWISE SPECIFIED.

1. REFER TO MODEL FOR ADDITIONAL INFORMATION
2. SEE SHIPPING INSTRUCTIONS FOR FINAL PACKAGING
3. ASSEMBLE ITEMS AS SHOWN

NEXT ASSEMBLY
5245137

DO NOT SCALE DRAWING		NAME	DATE	<p>1645 LEMONWOOD DR. SANTA PAULA, CA 93060</p>
DRAWN		TM	11/19/2009	
CHECKED		OR	12/28/2021	
DIMENSIONS ARE IN MM		THIRD ANGLE PROJECTION		<p>TITLE: XPR-12FDL OFF SIDE POST ASSEMBLY</p> <p>SIZE DWG. NO. 5215233</p> <p>REV AC</p>
		<p>PROPRIETARY AND CONFIDENTIAL</p> <p>THE INFORMATION CONTAINED IN THIS DRAWING IS THE SOLE PROPERTY OF BENDPAK INC. ANY REPRODUCTION IN PART OR AS A WHOLE WITHOUT THE WRITTEN PERMISSION OF BENDPAK INC. IS PROHIBITED.</p>		<p>SCALE: 1:25</p> <p>SHEET 1 OF 1</p>

REVISION				
REV	DESCRIPTION	DATE	EDITED BY	ECO#
H	UPDATED BOM REVISION	05/30/2018	TM	00953
J	UPDATED BOM REVISION	08/12/2019	CA	01117
K	UPDAT ED BOM REVISION	80/23/2019	TM	01123






WHERE USED
XPR-12FDL
XPR-12CL
XPR-12CL-192

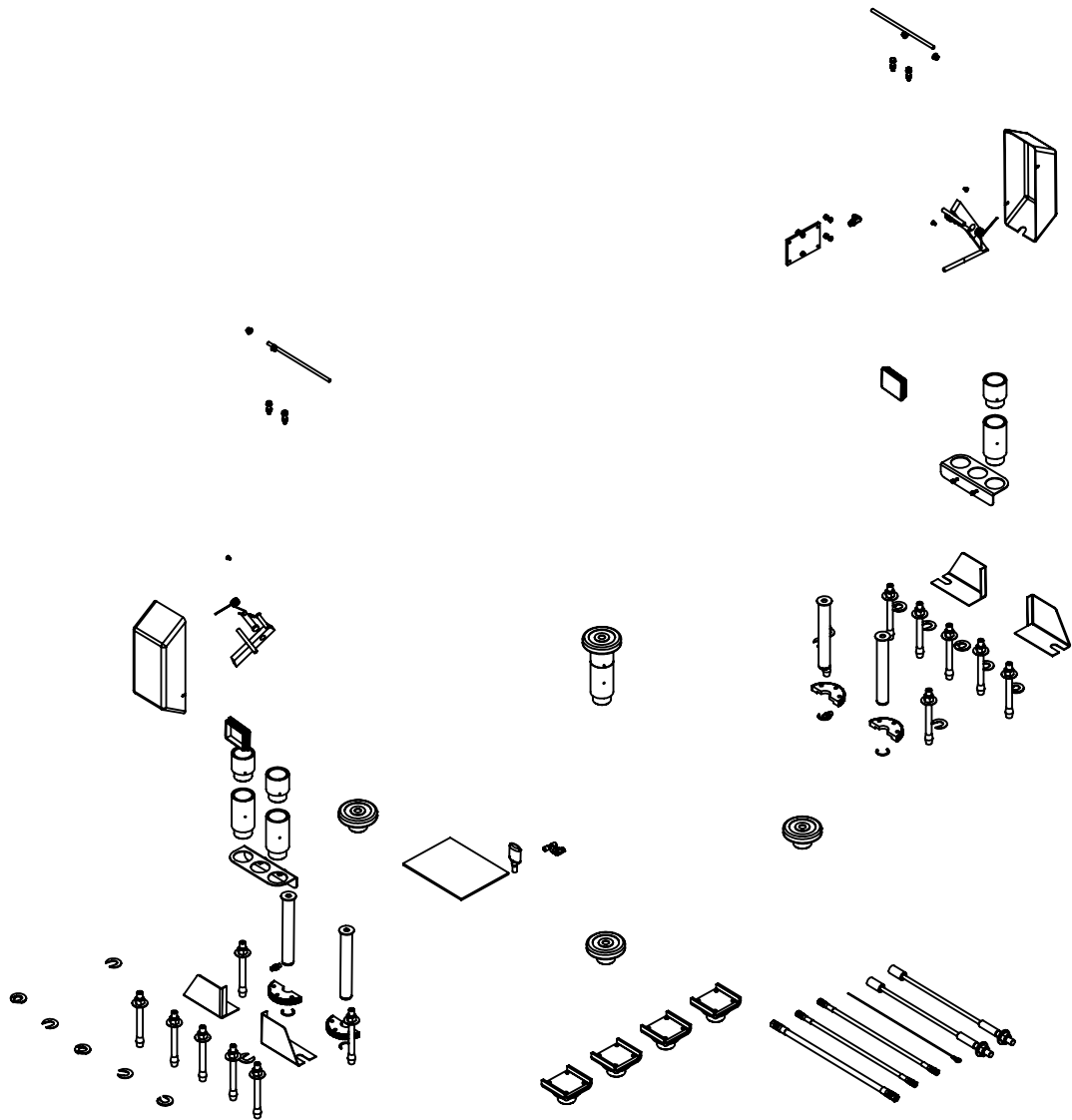
NOTE: UNLESS OTHERWISE SPECIFIED.

1. REFER TO MODEL FOR ADDITIONAL INFORMATION
2. SEE SHIPPING INSTRUCTIONS FOR FINAL PACKAGING
3. ASSEMBLE ITEMS AS SHOWN

NEXT ASSEMBLY
5260563
5260567
5260568

ITEM NO	PART NUMBER	DESCRIPTION	QTY	REV
1	5600993	XPR-12CL/FDL TRIPLE TELESCOPING ARM WELDMENT	1	K
2	5545341	WASHER M10 x Ø20 FLAT	3	-
3	5545200	WASHER M10 x Ø18 SL	3	-
4	5530302	HHB M10 x 1.5 x 40 FULLY THREAD	3	-

DO NOT SCALE DRAWING		NAME	DATE			
		DRAWN	JM	06/23/2015	1645 LEMONWOOD DR. SANTA PAULA, CA 93060	
		CHECKED	CA	08/26/2019		
DIMENSIONS ARE IN MM		THIRD ANGLE PROJECTION		TITLE:	XPR-12CL/FDL TRIPLE TELESCOPING ARM ASSEMBLY	
				SIZE	DWG. NO.	REV
		<p>PROPRIETARY AND CONFIDENTIAL THE INFORMATION CONTAINED IN THIS DRAWING IS THE SOLE PROPERTY OF BENDPAK INC. ANY REPRODUCTION IN PART OR AS A WHOLE WITHOUT THE WRITTEN PERMISSION OF BENDPAK INC. IS PROHIBITED.</p>		A	5215283	K
SCALE: 1:5				SHEET 1 OF 1		



WHERE USED
XPR-12FDL

NOTE: UNLESS OTHERWISE SPECIFIED.

1. REFER TO MODEL FOR ADDITIONAL INFORMATION
2. SEE SHIPPING INSTRUCTIONS FOR FINAL PACKAGING

NEXT ASSEMBLY
5260568

REVISION				
REV	DESCRIPTION	DATE	EDITED BY	ECO#
D	ADDED 5701660, 570661 AND 5701662, REMOVED 5535011 AND 5545345, UPDATED BOM REVISION	03/10/2020	TM	01107
E	UPDATED BOM REVISION	10/05/2020	TM	01215
F	UPDATED BOM REVISION	06/22/2021	TM	01310

ITEM NO	PART NUMBER	DESCRIPTION	QTY	REV
1	5174114	XPR-12FDL PARTS BAG	1	L
2	5540281	C RING Ø38mm OD 5103-150	4	-
3	5210196	D2/XPR POWER SIDE INCLINED SAFETY ASSEMBLY	1	C
4	5210010	D2/XPR OFF SIDE SAFETY WELDMENT	1	F
5	5715003	POWER UNIT VIBRATION DAMPENER	1	B
6	5215701	ROUND LIFT PAD ADAPTER ASSEMBLY	4	D
7	5736605	D2-12C/XPR-12 BOLT ON ARM RESTRAINT GEAR	4	E
8	5716173	D2-8/12/15, GP/XPR POWER SIDE PLASTIC SAFETY COVER	1	B
9	5716174	D2-8/12/15, GP/XPR OFF SIDE PLASTIC SAFETY COVER	1	B
10	5746192	ARM ADAPTER, MEDIUM	4	E
11	5746193	ARM ADAPTER, LONG	4	D
12	5505346	D2/XPR-12C/FD LIFT HEAD PIN WELDMENT	4	B
13	5595124	Ø2.4 x 7400mm SAFETY CABLE	1	C
14	5570118	HYDRAULIC HOSE ASSEMBLY Ø6.35 x 1562mm DS	2	D
15	5595070	CABLE ASSEMBLY Ø12 x 10800mm ST	2	D
16	5570126	HYDRAULIC HOSE ASSEMBLY Ø10 x 3150mm DS	1	D
17	5746166	DOUBLE THREADED ROD M10 x 1.5 x 295	2	B
18	5530308	AB 3/4" x 7"	14	-
19	5215702	CRADLE LIFT PAD LARGE ADAPTER ASSEMBLY	4	E
20	5900952	XPR-12FDL INSTALLATION MANUAL	1	-
21	5701660	10AP/D2-12/15/XPR HEIGHT ADAPTER HOLDER	2	B
22	5701661	D2/XPR-12/15/18 FOOT GUARD, R.H.	2	A
23	5701662	D2/XPR-12/15/18 FOOT GUARD, L.H.	2	A

DO NOT SCALE DRAWING

DIMENSIONS ARE IN MM



NAME	DATE
DRAWN TM	10/18/2018
CHECKED OR	07/01/2021

THIRD ANGLE PROJECTION



PROPRIETARY AND CONFIDENTIAL
THE INFORMATION CONTAINED IN THIS DRAWING IS THE SOLE PROPERTY OF BENDPAK INC. ANY REPRODUCTION IN PART OR AS A WHOLE WITHOUT THE WRITTEN PERMISSION OF BENDPAK INC. IS PROHIBITED.



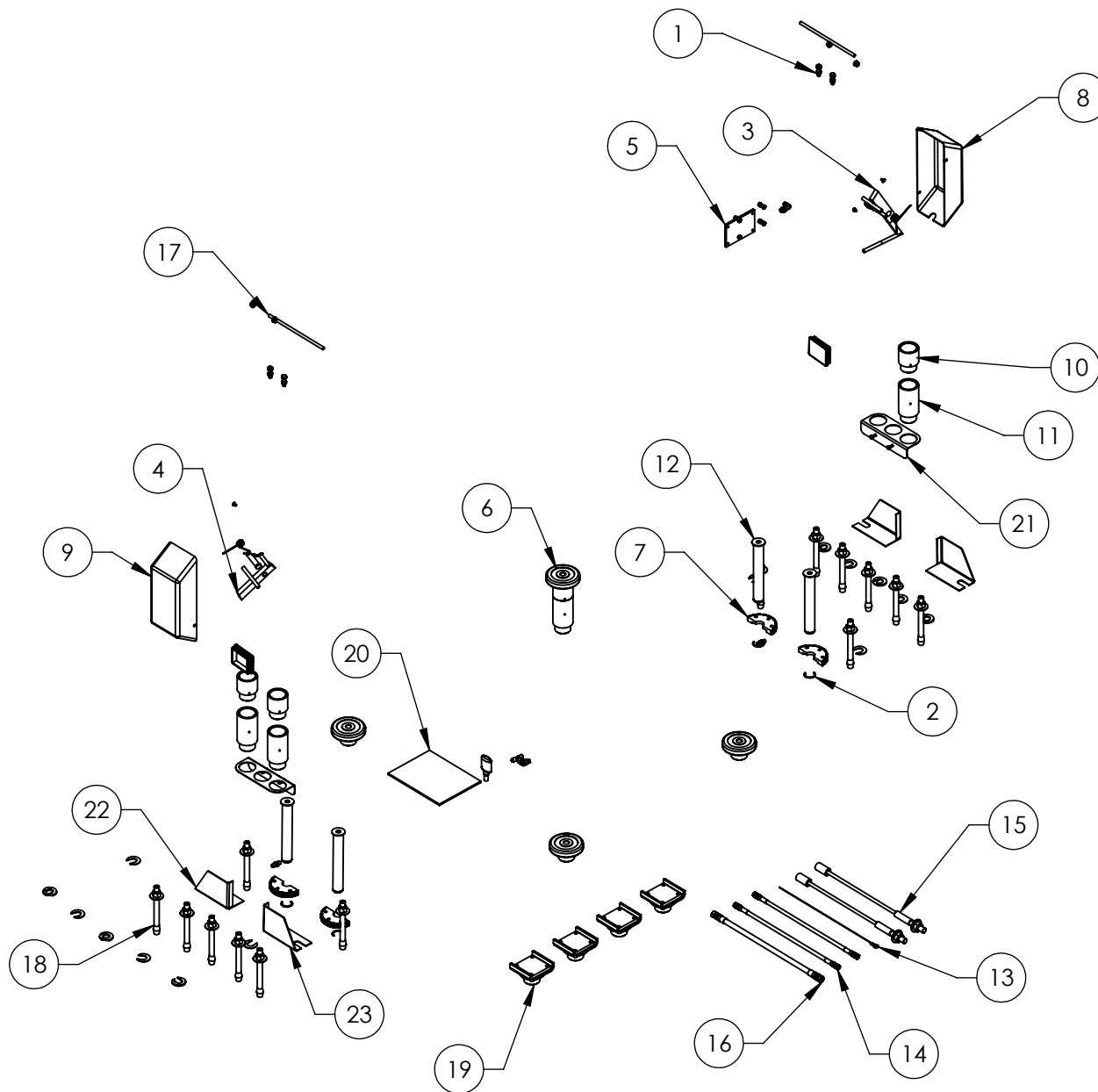
TITLE:

XPR-12FDL PARTS BOX

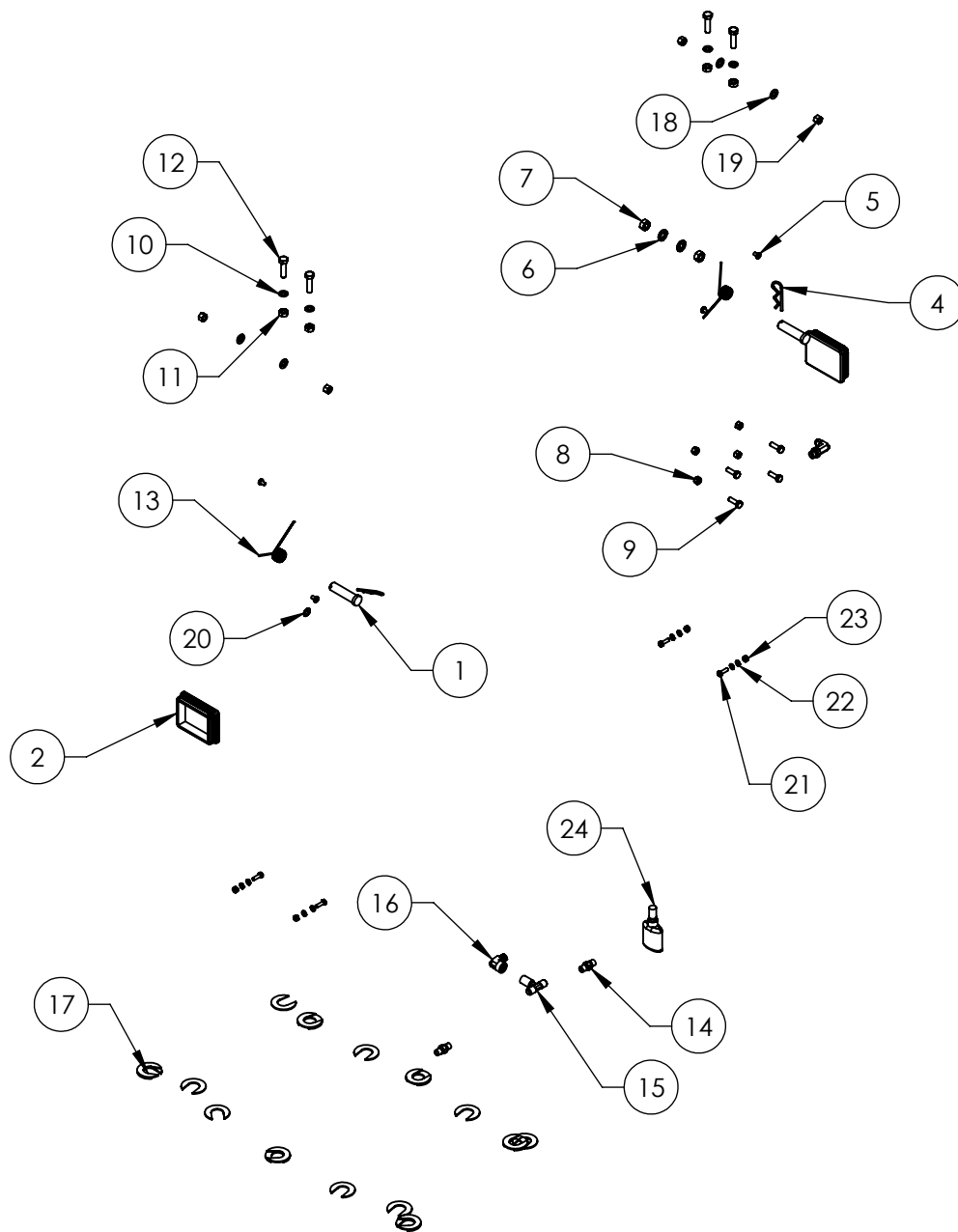
SIZE	DWG. NO.	REV
A	5250263	F

SCALE: 1:25

SHEET 1 OF 2



BP BendPak. 1645 LEMONWOOD DR. SANTA PAULA, CA 93060		
TITLE: XPR-12FDL PARTS BOX		
SIZE A	DWG. NO. 5250263	REV F
SCALE: 1:25		SHEET 2 OF 2



NOTE: UNLESS OTHERWISE SPECIFIED.

1. REFER TO MODEL FOR ADDITIONAL INFORMATION
2. SEE SHIPPING INSTRUCTIONS FOR FINAL PACKAGING

NEXT ASSEMBLY
5250263

REVISION				
REV	DESCRIPTION	DATE	EDITED BY	ECO#
J	UPDATE TITLE TO REFLECT WEHRE USED, UPDATED BOM REVISION AND NEXT ASSEMBLY	05/31/2018	TM	00953
K	ADDED 5535357, 5530093, 5545005, AND 5580012	03/06/2020	TM	01107
L	REPLACED 5505001 WITH 5505113, REMOVED (2) 5540075	10/05/2020	TM	01215

ITEM NO	PART NUMBER	DESCRIPTION	QTY	REV
1	5505113	2 POST SAFETY CLEVIS PIN	2	-
2	5715196	D2/XPR POLYETHYLENE COVER BLOCK 105 x 80	2	D
3	5550183	FTG ELB -06 JIC -06L ORB	1	-
4	5505350	MODEL#211 HAIR PIN/ LARGE	2	-
5	5530261	PHPS M6 x 1 x 10	4	-
6	5545347	WASHER, M12 FLAT WASHER	2	-
7	5535354	NUT M12 x 1.75	2	-
8	5535001	NUT M8 x 1.25 NL	4	-
9	5530010	HHB M8 x 1.25 x 25	4	-
10	5545200	WASHER M10 x Ø18 SL	4	-
11	5535998	NUT M10 x 1.5	4	-
12	5530760	HHB M10 x 1.5 x 38	4	-
13	5540075	R.H., 2.5 WIRE DIA., Ø20.5 x 75 LG	2	-
14	5550147	FTG NPL -04 JIC x -04 NPT	2	-
15	5550178	FTG TEE -04JIC -04JIC -06NPT	1	-
16	5550109	FTG ELB -06 JIC x -06 F NPT	1	-
17	5545535	C WASHER SHIM FOR LIFTS	20	-
18	5545341	WASHER M10 x Ø20 FLAT	4	-
19	5535013	NUT M10 x 1.5 NL	4	-
20	5505031	ROTOR CLIP 12mm SS	1	-
21	5530093	HHB M6 x 1 x 20	4	-
22	5545005	M6 FLAT WASHER	8	-
23	5535357	NUT M6 x 1.0 NL	4	-
24	5580012	LIQUID PTFE THREAD SEALANT 50ml	1	-

DO NOT SCALE DRAWING

DIMENSIONS ARE IN MM



NAME	DATE
DRAWN	TM 02/10/2010
CHECKED	OR 10/15/2020

THIRD ANGLE PROJECTION

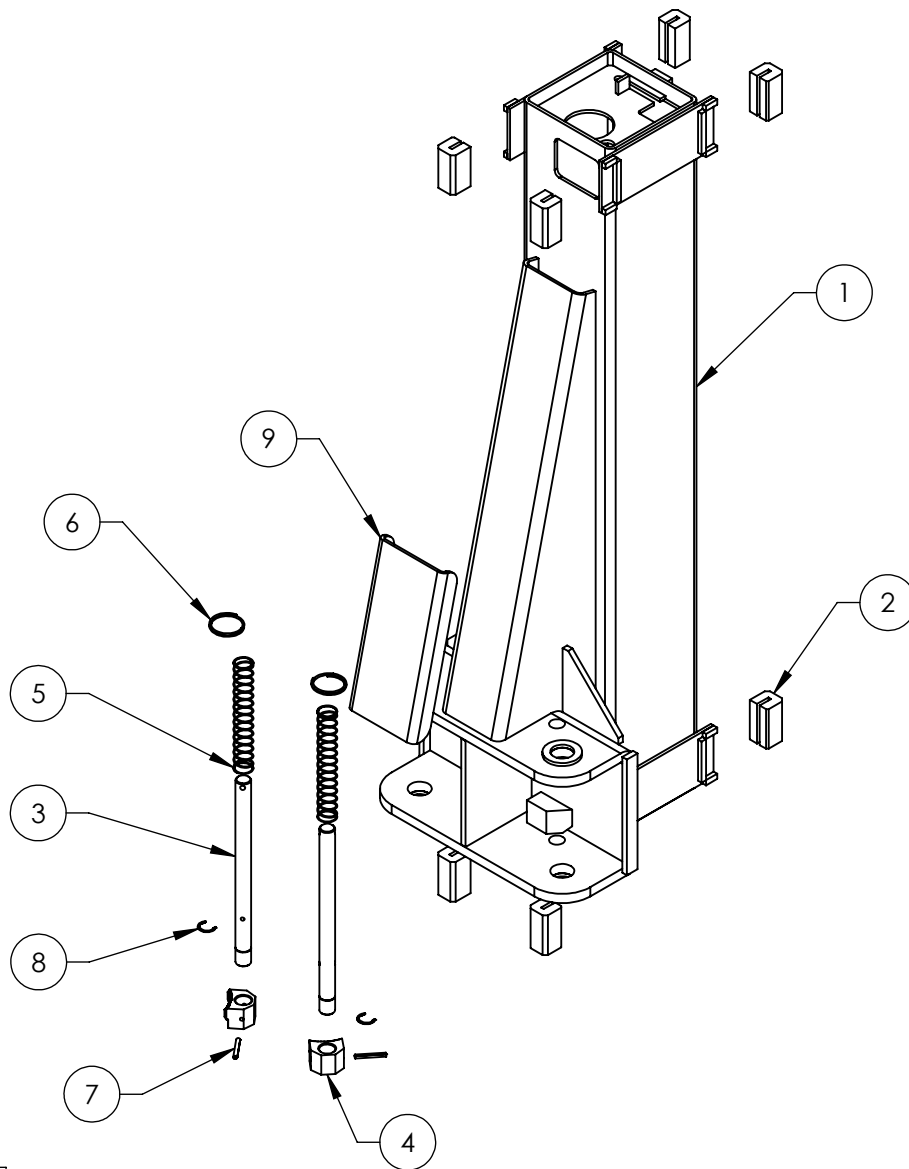
PROPRIETARY AND CONFIDENTIAL
THE INFORMATION CONTAINED IN THIS DRAWING IS THE SOLE PROPERTY OF BENDPAK INC. ANY REPRODUCTION IN PART OR AS A WHOLE WITHOUT THE WRITTEN PERMISSION OF BENDPAK INC. IS PROHIBITED.

BendPak
1645 LEMONWOOD DR.
SANTA PAULA, CA 93060

TITLE:
XPR-12FD PARTS BAG

SIZE DWG. NO. REV
A 5174114 L

SCALE: 1:15 SHEET 1 OF 1



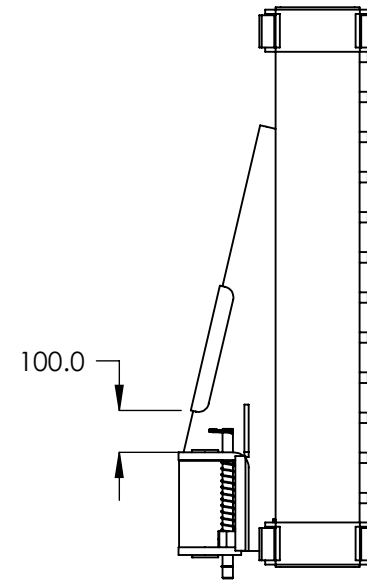
WHERE USED
XPR-12FDL

NOTE: UNLESS OTHERWISE SPECIFIED.

1. REFER TO MODEL FOR ADDITIONAL INFORMATION
2. SEE SHIPPING INSTRUCTIONS FOR FINAL PACKAGING
3. ASSEMBLE ITEMS AS SHOWN

NEXT ASSEMBLY
5215233
5215356

REVISION				
REV	DESCRIPTION	DATE	EDITED BY	ECO#
Q	UPDATED BOM REVISION	03/29/2018	TM	00930
R	UPDATED BOM REVISION	03/06/2020	TM	01107
T	ADDED GUIDE BLOCK ORIENTATION NOTE (PAGE2), UPDATED BOM REVISION	12/21/2021	CA	01371



ITEM NO	PART NUMBER	DESCRIPTION	QTY	REV
1	5600393	XPR-12FD LIFT HEAD WELDMENT	1	J
2	5716001	2 POST GUIDE BLOCK	8	H
3	5746099	D2/XPR-12C/FD/15/18C Ø25mm LONG GEAR SHAFT	2	E
4	5701052	D2/GP/M6K/XPR ARM INTERNAL GEAR STOP	2	F
5	5540130	D2/XPR-12C/FD/15/18C LIFT HEAD SPRING	2	A
6	5580219	KEYRING 56mm x 3mm	2	-
7	5505106	SPRING PIN M6 x 50	2	-
8	5540006	SNAP RING TRUARC 5103-100	2	-
9	5930184	D2/XPR-12/15/18 LIFT HEAD GUSSET COVER	1	C

DO NOT SCALE DRAWING

DIMENSIONS ARE IN MM



NAME	DATE
DRAWN TM	11/27/2009
CHECKED OR	12/28/2021

THIRD ANGLE PROJECTION



PROPRIETARY AND CONFIDENTIAL
THE INFORMATION CONTAINED IN THIS DRAWING IS THE SOLE PROPERTY OF BENDPAK INC. ANY REPRODUCTION IN PART OR AS A WHOLE WITHOUT THE WRITTEN PERMISSION OF BENDPAK INC. IS PROHIBITED.



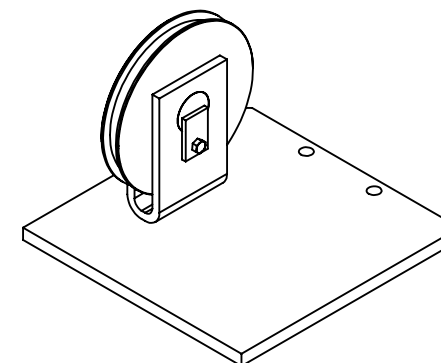
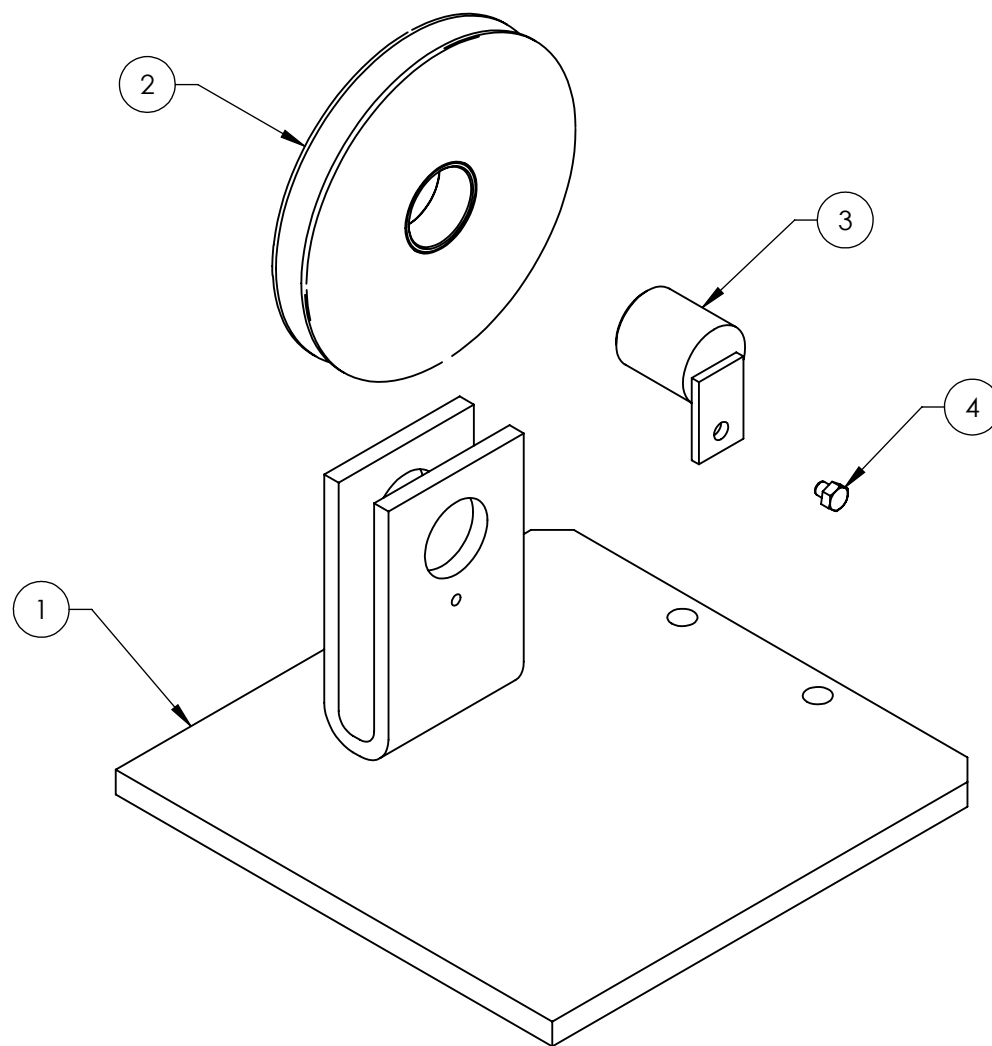
1645 LEMONWOOD DR.
SANTA PAULA, CA 93060

TITLE: XPR-12FD LIFT HEAD ASSEMBLY

SIZE	DWG. NO.	REV
A	5215290	T

SCALE: 1:12

SHEET 1 OF 2



ISOMETRIC VIEW
FOR REFERENCE ONLY
DO NOT SCALE

REVISION				
REV	DESCRIPTION	DATE	EDITED BY	ECO#
E	UPDATED BOM REVISION	05/21/2012	TM	00517
F	UPDATED BOM REVISION	08/22/2012	TM	00542
F-001	UPDATED NEXT ASSEMBLIES	07/02/2013	TM	00605
F-002	UPDATED NEXT ASSEMBLIES	12/16/2015	TM	00738
G	UPDATED BOM REVISION	11/15/2017	TM	00900

ITEM NO	PART NUMBER	DESCRIPTION	QTY	REV
1	5600383	XPR-12FD TOP EQUALIZER PULLEY PLATE WELDMENT	1	C
2	5575113	D2/XPR-12/15/18 SHEAVE ASSEMBLY	1	E
3	5620142	D2-12/15, XPR-12C/12FD/15/18C CABLE SHEAVE PIN WELDMENT	1	A
4	5530030	HHB M6 x 1 x 8	1	-

DO NOT SCALE DRAWING

NAME	DATE
DRAWN TM	04/22/2010
CHECKED AW	12/20/2017

DIMENSIONS ARE IN MM



PROPRIETARY AND CONFIDENTIAL
THE INFORMATION CONTAINED IN THIS DRAWING IS THE SOLE PROPERTY OF BENDPAK INC. ANY REPRODUCTION IN PART OR AS A WHOLE WITHOUT THE WRITTEN PERMISSION OF BENDPAK INC. IS PROHIBITED.

BendPak.

1645 LEMONWOOD DR.
SANTA PAULA, CA 93060

TITLE: XPR-12FD TOP
EQUALIZER PULLEY PLATE
ASSEMBLY

SIZE DWG. NO. REV
A 5215376 G

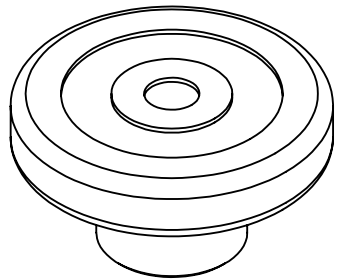
SCALE: 1:3

SHEET 1 OF 1

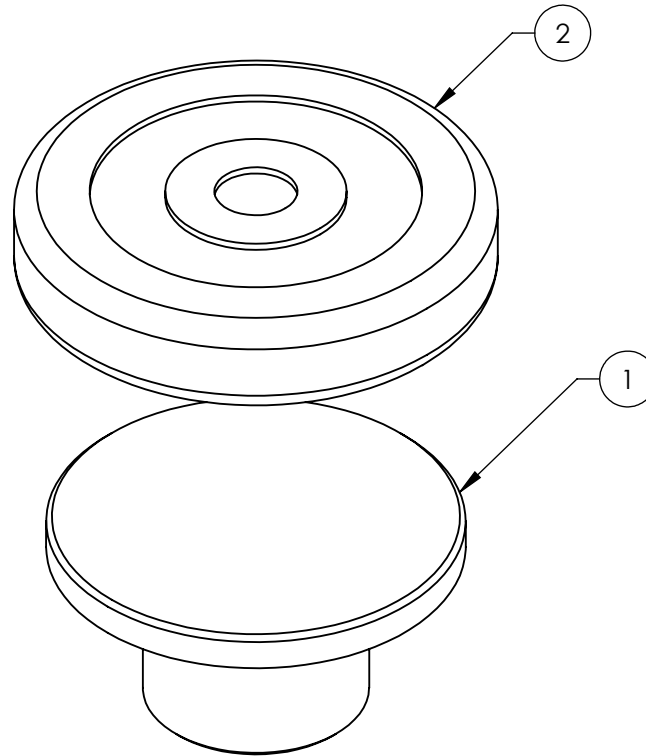
NOTE: UNLESS OTHERWISE SPECIFIED.

- SEE SHIPPING INSTRUCTIONS FOR FINAL PACKAGING
- ASSEMBLE ITEMS AS SHOWN

NEXT ASSEMBLY
5260568



ISOMETRIC VIEW
FOR REFERENCE ONLY
DO NOT SCALE



REVISION				
REV	DESCRIPTION	DATE	EDITED BY	ECO#
B	UPDATED BOM REVISION	04/22/2016	CA	00750
B-001	UPDATED NEXT ASSEMBLY	07/05/2017	TM	00849
C	UPDATED BOM REVISION	02/09/2018	TS	00922
D	UPDATED BOM REVISION	05/31/2018	TM	00953



WHERE USED
D2-12C
D2-15C
XPR-12 SERIES
XPR-15 SERIES
XPR-18 SERIES

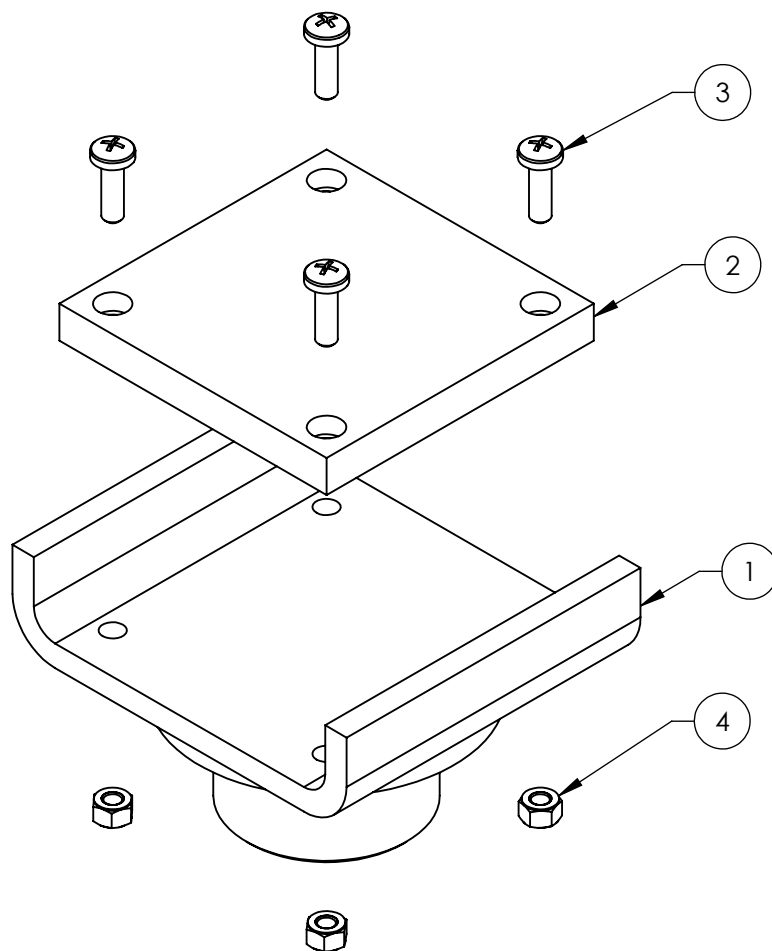
NOTE: UNLESS OTHERWISE SPECIFIED.

1. REFER TO MODEL FOR ADDITIONAL INFORMATION
2. SEE SHIPPING INSTRUCTIONS FOR FINAL PACKAGING
3. ASSEMBLE ITEMS AS SHOWN

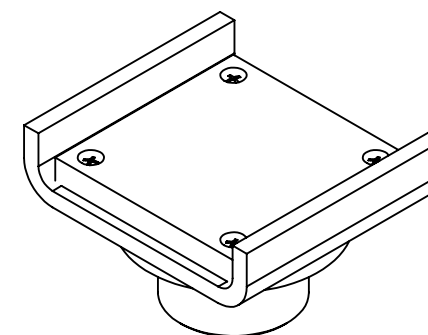
NEXT ASSEMBLY
5250254
5250263
5250264
5250266
5250267
5250268
5250269
5250314
5250315

ITEM NO	PART NUMBER	DESCRIPTION	QTY	REV
1	5600999	ROUND LIFT PAD WELDMENT	1	C
2	5715017	ROUND LIFT PAD ADAPTER POLYURETHANE PAD	1	E

DO NOT SCALE DRAWING		NAME	DATE	<div>BP BendPak®</div> <div>1645 LEMONWOOD DR. SANTA PAULA, CA 93060</div>	
DIMENSIONS ARE IN MM <div></div>		DRAWN	JM	06/26/2015	<div>TITLE: ROUND LIFT PAD ADAPTER ASSEMBLY</div> <div><div>SIZE</div><div>DWG. NO.</div><div>REV</div><div>A5215701D</div></div> <div><div>SCALE: 1:2</div><div>SHEET 1 OF 1</div></div>
		CHECKED	CA	06/18/2018	
		THIRD ANGLE PROJECTION <div></div>			
<div>PROPRIETARY AND CONFIDENTIAL</div> <div>THE INFORMATION CONTAINED IN THIS DRAWING IS THE SOLE PROPERTY OF BENDPAK INC., ANY REPRODUCTION IN PART OR AS A WHOLE WITHOUT THE WRITTEN PERMISSION OF BENDPAK INC. IS PROHIBITED.</div>					



REVISION				
REV	DESCRIPTION	DATE	EDITED BY	ECO#
C	UPDATED BOM REVISION	04/22/2016	CA	00750
C-001	UPDATED NEXT ASSEMBLY	07/05/2017	TM	00849
D	UPDATED BOM REVISION	02/26/2018	TM	00930
E	UPDATED BOM REVISION	05/31/2018	TM	00953



ISOMETRIC VIEW
FOR REFERENCE ONLY
DO NOT SCALE

WHERE USED
D2-12/15 SERIES
XPR-12FDL SERIES
XPR-12CL SERIES
XPR-15 SERIES
XPR-18 SERIES

NOTE: UNLESS OTHERWISE SPECIFIED.

1. REFER TO MODEL FOR ADDITIONAL INFORMATION
2. SEE SHIPPING INSTRUCTIONS FOR FINAL PACKAGING
3. ASSEMBLE ITEMS AS SHOWN

ITEM NO	PART NUMBER	DESCRIPTION	QTY	REV
1	5601000	CRADLE LIFT PAD WELDMENT	1	C
2	5715020	CRADLE LIFT PAD LARGE POLYURETHANE PAD	1	C
3	5530022	BPHS M6 x 1 x 20 ZPL	4	--
4	5535357	NUT M6 x 1.0 NL	4	--

DO NOT SCALE DRAWING

NAME DATE

DRAWN JM 06/24/2015

CHECKED CA 06/18/2018

THIRD ANGLE PROJECTION



PROPRIETARY AND CONFIDENTIAL
THE INFORMATION CONTAINED IN THIS DRAWING IS
THE SOLE PROPERTY OF BENDPAK INC. ANY
REPRODUCTION IN PART OR AS A WHOLE WITHOUT
THE WRITTEN PERMISSION OF BENDPAK INC. IS
PROHIBITED.

BendPak
1645 LEMONWOOD DR.
SANTA PAULA, CA 93060

TITLE: CRADLE LIFT PAD LARGE
ADAPTER ASSEMBLY

SIZE DWG. NO. REV
A 5215702 E

SCALE: 1:2

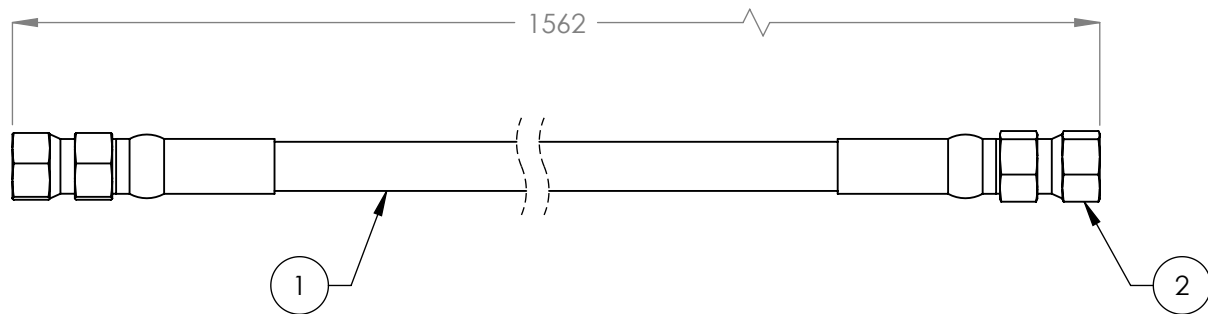
SHEET 1 OF 1

NEXT ASSEMBLY
5250254
5250263
5250264
5250266
5250267
5250268
5250269
5250314
5250315

DIMENSIONS ARE IN MM



REVISION				
REV	DESCRIPTION	DATE	EDITED BY	ECO#
B B-001	UPDATED TITLE TO REFLECT WHERE USED UPDATED NEXT ASSEMBLY	02/15/2012 07/02/2013	TM TM	00490 00605
C C-001	REPLACED 5570110 WITH 5570129 UPDATED NEXT ASSEMBLY	12/01/2014 12/15/2015	TM TM	00673 00738
D	UPDATED TITLE TO REFLECT STANDARD	03/09/2020	TM	01107



WHERE USED
XPR-12FDL

NOTE: UNLESS OTHERWISE SPECIFIED.

1. FOR ITEM 1 SPECIFICATIONS REFER TO PART SPECIFICATION FORM
2. (*)ITEM 1 QTY FOR REFERENCE ONLY

NEXT ASSEMBLY
5250263

ITEM NO	PART NUMBER	DESCRIPTION	QTY	REV
1	5570129	Ø6.4 ID HYDRAULIC HOSE	1496mm*	-
2	5550325	FTG NPL Ø1/4 CRIMP x -04 JIC	2	-

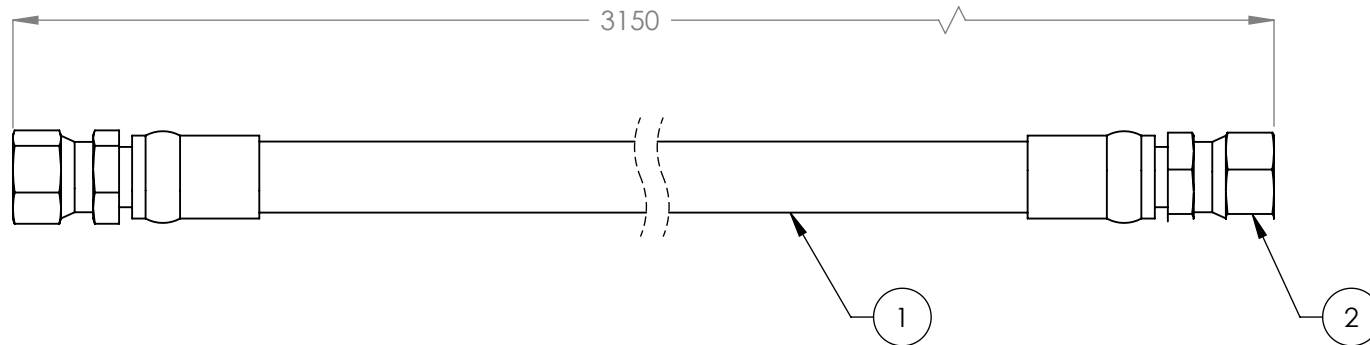
DO NOT SCALE DRAWING	NAME	DATE
	DRAWN	TM 08/26/2009
	CHECKED	OR 04/10/2020

DIMENSIONS ARE IN MM TOLERANCES: 0. = ±1.5 0.0 = ±1.0 0.00 = ±0.25 0.000 = ±0.13	THIRD ANGLE PROJECTION
SURFACE FINISH 1.6 ISO Ra µm FOR MACHINED SURFACES UNLESS OTHERWISE SPECIFIED	

BP BendPak. 1645 LEMONWOOD DR. SANTA PAULA, CA 93060	
TITLE: HYDRAULIC HOSE ASSEMBLY Ø6.35 x 1562mm DS	
SIZE DWG. NO.	REV
A 5570118	D
SCALE: 1:2	
SHEET 1 OF 1	

PROPRIETARY AND CONFIDENTIAL
THE INFORMATION CONTAINED IN THIS DRAWING IS
THE SOLE PROPERTY OF BENDPAK INC. ANY
REPRODUCTION IN PART OR AS A WHOLE WITHOUT
THE WRITTEN PERMISSION OF BENDPAK INC. IS
PROHIBITED.

REVISION				
REV	DESCRIPTION	DATE	EDITED BY	ECO#
B	UPDATED NEXT ASSEMBLY AND ADDED FITTING CALL OUT IN TITLE	01/11/2010	TM	00293
C	UPDATED TITLE TO REFLECT WHERE USED UPDATED NEXT ASSEMBLY UPDATED NEXT ASSEMBLY	02/15/2012	TM	00490
C-001		07/02/2013	TM	00605
C-002		12/15/2015	TM	00738
D	UPDATED TITLE TO REFLECT STANDARD	03/09/2020	TM	01107





WHERE USED
XPR-12FDL

NOTE: UNLESS OTHERWISE SPECIFIED.

- FOR ITEM 1 SPECIFICATIONS REFER TO PART SPECIFICATION FORM
- (*)ITEM 1 QTY FOR REFERENCE ONLY

NEXT ASSEMBLY
5250263

ITEM NO.	PART NUMBER	DESCRIPTION	QTY.	REV
1	5570116	Ø10 ID HYDRAULIC HOSE	3086mm*	-
2	5550336	FTG NPL -06 CRIMP x -06 JIC	2	-

DO NOT SCALE DRAWING		NAME	DATE	<div> BendPak.</div> <div>1645 LEMONWOOD DR. SANTA PAULA, CA 93060</div>		
DIMENSIONS ARE IN MM TOLERANCES: <div>0. = ±1.5 0.0 = ±1.0 0.00 = ±0.25 0.000 = ±0.13</div> SURFACE FINISH 1.6 ISO Ra µm FOR MACHINED SURFACES UNLESS OTHERWISE SPECIFIED		DRAWN	GJ			10/15/2008
		CHECKED	OR			04/10/2020
		THIRD ANGLE PROJECTION		TITLE:		
				HYDRAULIC HOSE ASSEMBLY Ø10 x 3150mm DS		
				SIZE	DWG. NO.	REV
Y		PROPRIETARY AND CONFIDENTIAL THE INFORMATION CONTAINED IN THIS DRAWING IS THE SOLE PROPERTY OF BENDPAK INC. ANY REPRODUCTION IN PART OR AS A WHOLE WITHOUT THE WRITTEN PERMISSION OF BENDPAK INC. IS PROHIBITED.		A	5570126	D
		SCALE: 1:2			SHEET 1 OF 1	

PART SPECIFICATION FORM

ACP

BENDPAK Number:	5570129
MRP Description:	1/4" HYDRAULIC HOSE 31 CL-0400X
Date:	05/24/2018
ECO :	00950

1. Engineering Specification

Application:

1/4" HYDRAULIC HOSE

Detailed Description:

ONE or TWO BRAID STEEL WIRE HYDRAULIC HOSE

SIZE: 1/4" / 6mm I.D. MIN
0.53" / 13.4mm O.D. MAX

SPECS: 5700PSI OR 393 BAR WORKING PRESSURE MINIMUM
17100PSI OR 1179 BAR MINIMUM BURST PRESSURE MINIMUM
3" / 80mm MIN BEND RADIUS

COLOR: BLACK

ADDITIONAL CONTACT INFORMATION:

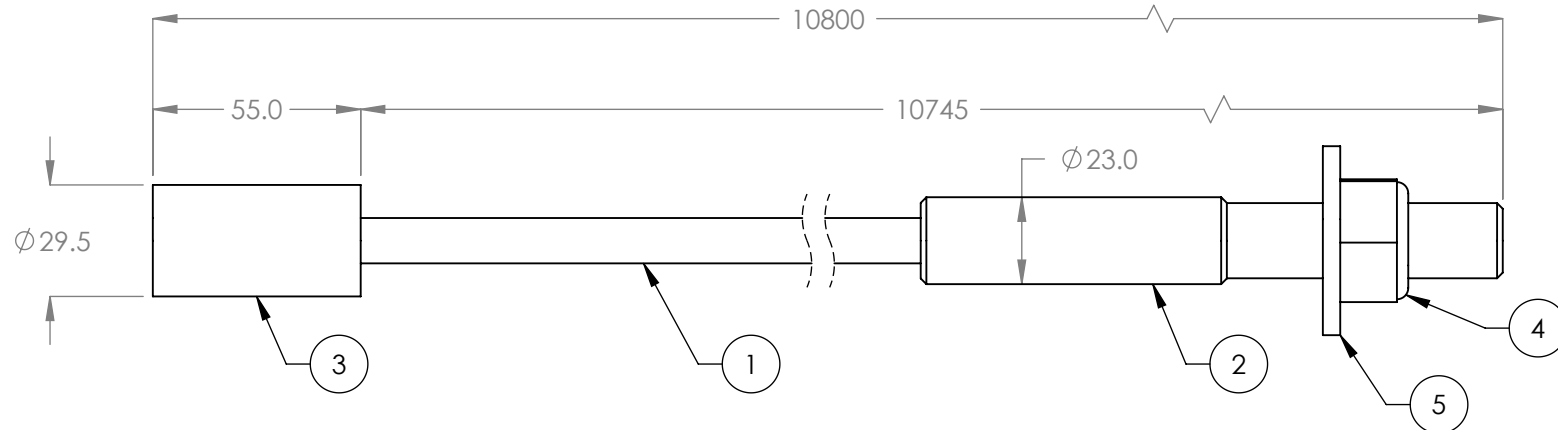
Xin Yurong
Shandong Ningjin High Energy Hose Co., Ltd.
Tel: +86 534-5421821
No. 7, Taishan Rd., Industrial Park, Ningjin County, Shandong, China



2. Vendor Information (Or for Reference)

Approved Vendor	Vendor Part #	Contact #	AUTHORIZED COMPONENT PROVIDER
1) Ningjin Hydraulic Hose Co.	5570129	+86 534-5421821	X
2)			
OR BENDPAK ENGINEERING APPROVED EQUIVALENT			

REVISION				
REV.	DESCRIPTION	DATE	EDITED BY	ECO#
OBSO	REPLACED BY 5595534	07/28/2009	AC	00249
B	UNOBSOLETE DUE TO REUSE IN XPR-12FD, DERIVED FROM 801067	01/26/2010	TM	00293
B-001	UPDATED NEXT ASSEMBLY	07/02/2013	TM	00605
B-002	UPDATED NEXT ASSEMBLY	12/15/2015	TM	00738
C	UPDATED BOM REVISION	11/03/2017	TM	00900
D	UPDATED TITLE TO REFLECT STANDARD, ADDED 5535011 AND 5545345	03/09/2020	TM	01107



ITEM NO.	PART NUMBER	DESCRIPTION	QTY.	REV
1	5595001	CABLE, LIFTING Ø12	10718mm*	-
2	5746020	Ø12 THREADED CABLE CONNECTOR	1	D
3	5746019	Ø12 CABLE END CONNECTOR	1	F
4	5535011	NUT M22 x 2.5 NL	1	-
5	5545345	WASHER M22 x 50mm FLAT	1	-

WHERE USED
XPR-12FDL

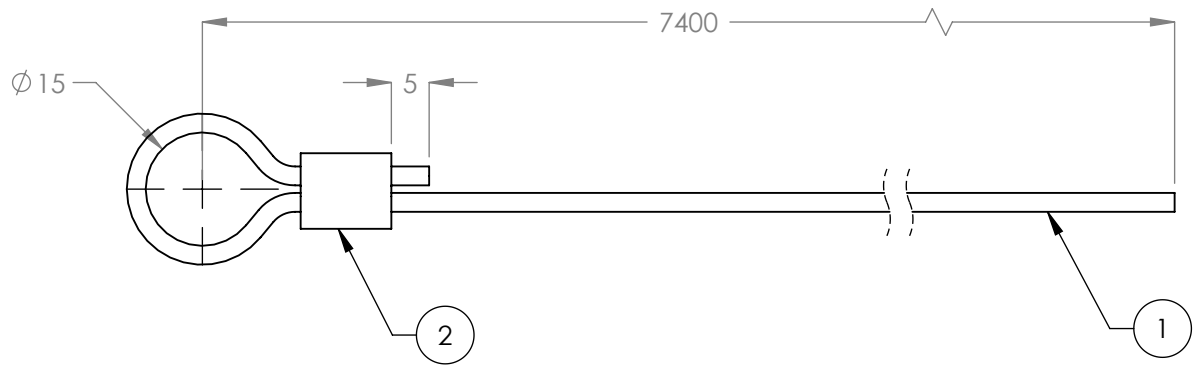
NOTE: UNLESS OTHERWISE SPECIFIED.

- FOR ITEM 1 SPECIFICATIONS REFER TO PART SPECIFICATION FORM
- LENGTH SHOWN IS AFTER SWAGING
- ITEM 1 QTY FOR REFERENCE ONLY
- THREAD 5535011 WITH 5545345 ONTO CABLES FOR SHIPMENT

NEXT ASSEMBLY
5250263

DO NOT SCALE DRAWING		NAME	DATE	<p>1645 LEMONWOOD DR. SANTA PAULA, CA 93060</p>
DRAWN		AC	10/01/2008	
CHECKED		OR	04/09/2020	
DIMENSIONS ARE IN MM TOLERANCES: 0. = ±1.5 0.0 = ±0.5		THIRD ANGLE PROJECTION		TITLE: CABLE ASSEMBLY Ø12 x 10800mm ST
SURFACE FINISH 1.6 ISO Ra µm FOR MACHINED SURFACES UNLESS OTHERWISE SPECIFIED				
PROPRIETARY AND CONFIDENTIAL THE INFORMATION CONTAINED IN THIS DRAWING IS THE SOLE PROPERTY OF BENDPAK INC. ANY REPRODUCTION IN PART OR AS A WHOLE WITHOUT THE WRITTEN PERMISSION OF BENDPAK INC. IS PROHIBITED.		SIZE DWG. NO. REV A 5595070 D		SCALE: 1:2 SHEET 1 OF 1

REVISION				
REV	DESCRIPTION	DATE	EDITED BY	ECO#
A	PRODUCTION RELEASE, DERIVED FROM 800721	09/15/2009	TM	00293
B	UPDATED TITLE TO REFLECT WHERE USED	02/15/2012	TM	00490
B-001	UPDATED NEXT ASSEMBLIES	07/02/2013	TM	00605
B-002	UPDATED NEXT ASSEMBLIES	12/15/2015	TM	00738
C	UPDATED TITLE TO REFLECT STANDARD	03/09/2020	TM	01107



WHERE USED
XPR-12FDL

NOTE: UNLESS OTHERWISE SPECIFIED.

1. FOR ITEM 1 SPECIFICATIONS REFER TO PART SPECIFICATION FORM
2. ASSEMBLE ITEMS AS SHOWN
3. ITEM 1 QTY FOR REFERENCE ONLY

NEXT ASSEMBLY
5250263

ITEM NO	PART NUMBER	DESCRIPTION	QTY	REV
1	5595682	CABLE SAFETY Ø2.4mm	7440mm*	--
2	5580210	Ø2.4mm OVAL CABLE CRIMP	1	--

DO NOT SCALE DRAWING	NAME	DATE
	DRAWN	TM 09/15/2009
	CHECKED	OR 04/09/2020

DIMENSIONS ARE IN MM
TOLERANCES:
0. = ±1.5
0.0 = ±0.5

SURFACE FINISH 1.6 ISO Ra µm
FOR MACHINED SURFACES
UNLESS OTHERWISE SPECIFIED

THIRD ANGLE PROJECTION

PROPRIETARY AND CONFIDENTIAL
THE INFORMATION CONTAINED IN THIS DRAWING IS
THE SOLE PROPERTY OF BENDPAK INC. ANY
REPRODUCTION IN PART OR AS A WHOLE WITHOUT
THE WRITTEN PERMISSION OF BENDPAK INC. IS
PROHIBITED.

BendPak.
1645 LEMONWOOD DR.
SANTA PAULA, CA 93060

TITLE: Ø2.4 x 7400mm
SAFETY CABLE

SIZE DWG. NO. REV

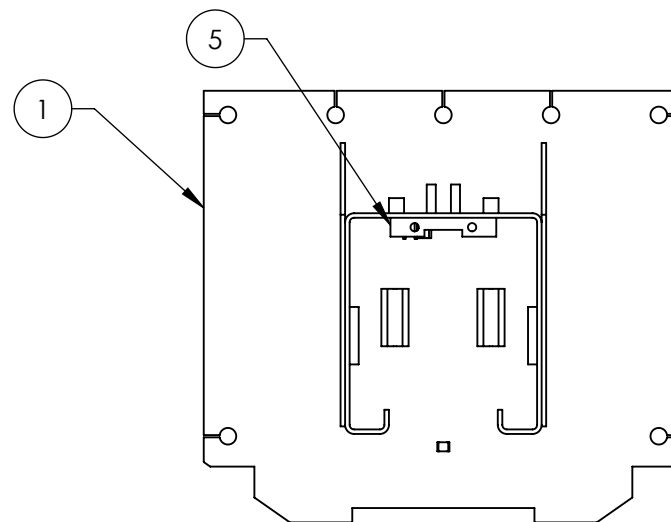
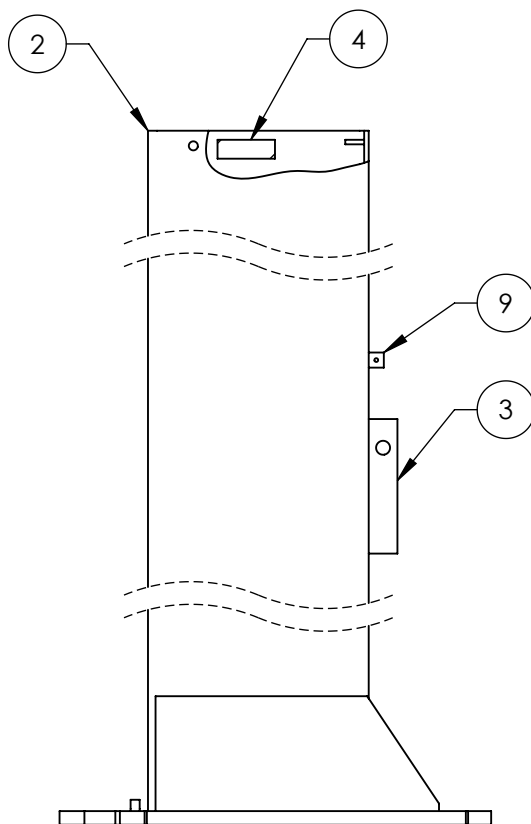
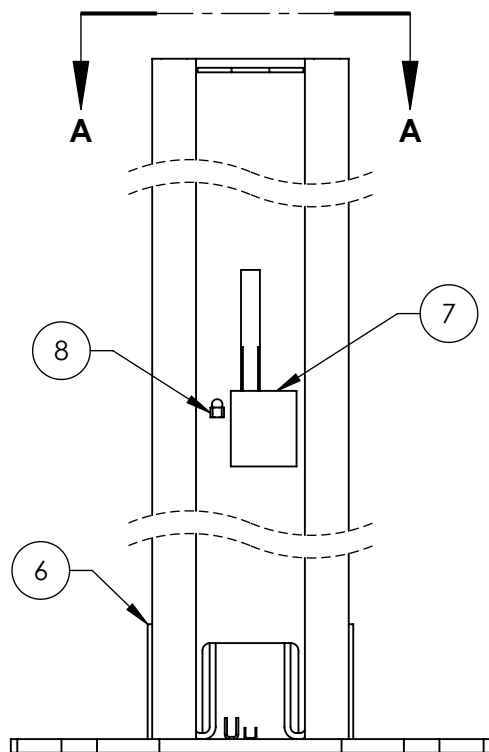
A 5595124 C

SCALE: 1:1

SHEET 1 OF 1



ISOMETRIC VIEW
FOR REFERENCE ONLY
DO NOT SCALE



SECTION A-A

WHERE USED
XPR-12FDL

NOTE: UNLESS OTHERWISE SPECIFIED.

1. REFER TO MODEL FOR ADDITIONAL INFORMATION
2. BREAK AND DEBURR ALL SHARP EDGES 0.3mm
3. REMOVE ALL WELD SPLATTER
4. DIMENSIONS SHOWN ARE AFTER PAINTING
5. PAINT BENDPAK GRAY (RAL-7024) 20% GLOSS

NEXT ASSEMBLY
5215233

REVISION				
REV	DESCRIPTION	DATE	EDITED BY	ECO#
H	(PAGE 2) WAS 236 NOW 246, WAS 152 NOW 145, WAS 76 NOW 73, WAS 1604 NOW 1560	10/22/2018	TM	01011
J	UPDATED BOM REVISION	05/21/2019	TS	01086
K	REMOVED 5730075, ADDED CRITICAL DIMENSIONS AND GLOSS NOTE TO PAINT, UPDATED BOM REVISION	03/06/2020	TM	01107

ITEM NO	PART NUMBER	DESCRIPTION	QTY	REV
1	5620372	XPR-12FD OFF SIDE BASE PLATE WELDMENT	1	C
2	5701301	XPR-12FDL OFF SIDE BARE POST	1	D
3	5736635	XPR SAFETY RELEASE PLATE	2	D
4	5735700	10AP/XPR TOP TROUGH SUPPORT	2	D
5	5701457	10AP/XPR TOP TROUGH TIE PLATE	1	D
6	5730270	XPR-12/15/18 POST GUSSET	2	B
7	5735228	XPR STIFFENING PLATE	1	B
8	5210004	GP/PCL/XPR SAFETY SHEAVE CLAMP	1	C
9	5760001	SAFETY COVER BLOCK	2	C

DO NOT SCALE DRAWING

DIMENSIONS ARE IN MM
TOLERANCES:

0. = ±1.5
0.0 = ±0.5

SURFACE FINISH 1.6 ISO Ra µm
FOR MACHINED SURFACES
UNLESS OTHERWISE SPECIFIED

NAME	DATE
DRAWN TM	11/18/2009
CHECKED OR	04/09/2020

THIRD ANGLE PROJECTION



PROPRIETARY AND CONFIDENTIAL
THE INFORMATION CONTAINED IN THIS DRAWING IS
THE SOLE PROPERTY OF BENDPAK INC. ANY
REPRODUCTION IN PART OR AS A WHOLE WITHOUT
THE WRITTEN PERMISSION OF BENDPAK INC. IS
PROHIBITED.

BendPak.

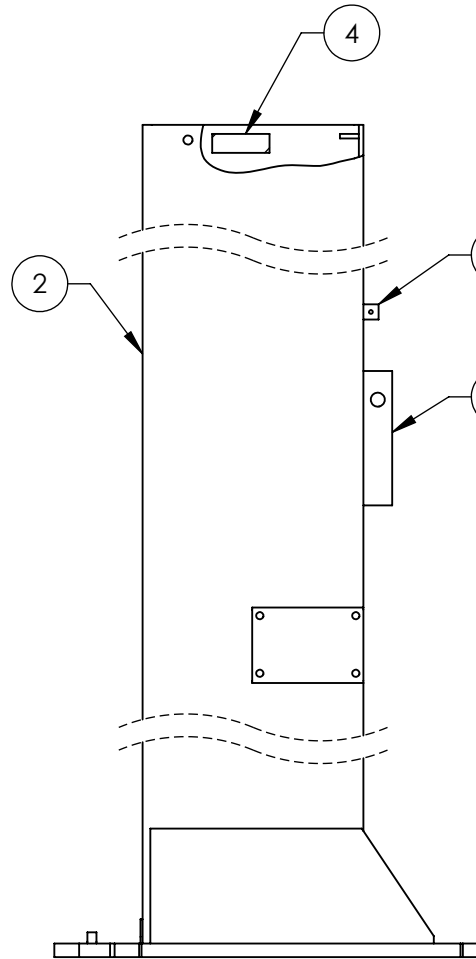
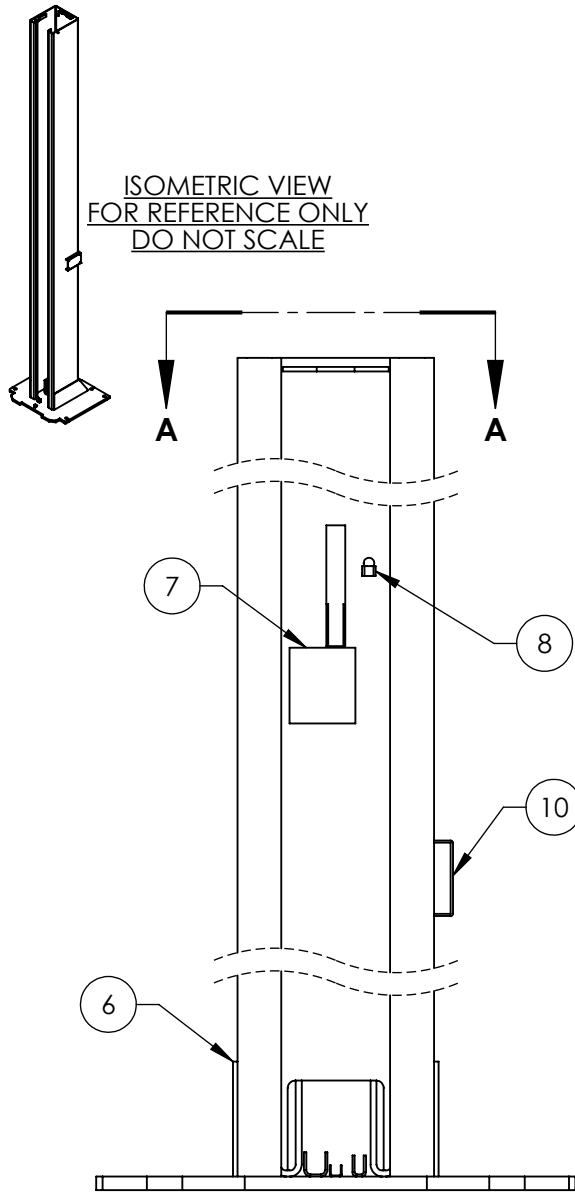
1645 LEMONWOOD DR.
SANTA PAULA, CA 93060

TITLE: XPR-12FD OFF SIDE POST
WELDMENT

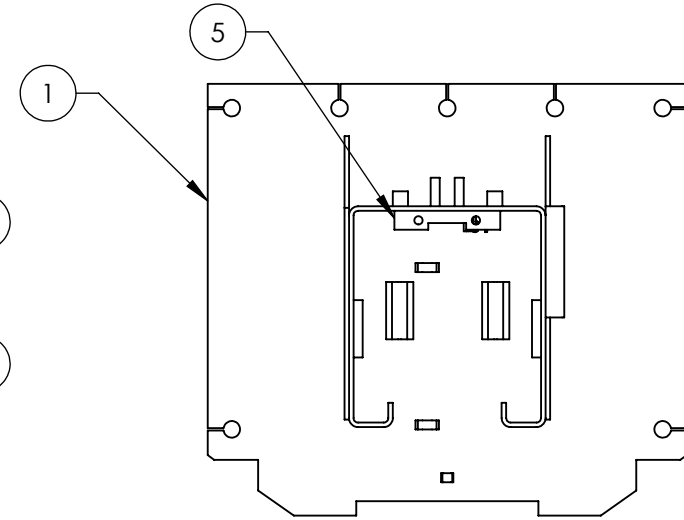
SIZE DWG. NO. REV
A 5600377 K

SCALE: 1:10

SHEET 1 OF 3



REVISION				
REV	DESCRIPTION	DATE	EDITED BY	ECO#
K	(PAGE 2) WAS 236 NOW 246, WAS 152 NOW 145, WAS 76 NOW 73, WAS 1604 NOW 1560	10/22/2018	TM	01011
L	UPDATED BOM REVISION	05/15/2019	TS	01086
M	REMOVED 5730075, ADDED CRITICAL DIMENSIONS AND GLOSS NOTE TO PAINT, UPDATED BOM REVISION	03/09/2020	TM	01107
M-001	5700001 WELD WAS INSIDE NOW OUTSIDE	09/21/2021	TM	01338



SECTION A-A

ITEM NO	PART NUMBER	DESCRIPTION	QTY	REV
1	5620373	XPR-12FD POWER SIDE BASE PLATE WELDMENT	1	D
2	5701468	XPR-12FDL POWER SIDE BARE POST	1	E
3	5736635	2 POST SAFETY RELEASE PLATE	2	D
4	5735700	10AP, D2, XPR TOP TROUGH SUPPORT	2	D
5	5701457	D2, XPR TOP TROUGH TIE PLATE	1	D
6	5730270	D2/XPR-12/15/18 POST GUSSET	2	B
7	5735228	D2/XPR STIFFENING PLATE	1	B
8	5210004	D2/GP/PCL/XPR SAFETY SHEAVE CLAMP	1	C
9	5760001	SAFETY COVER BLOCK	2	C
10	5700001	MOUNTING BRACKET	1	B

WHERE USED
XPR-12FDL

NOTE: UNLESS OTHERWISE SPECIFIED.

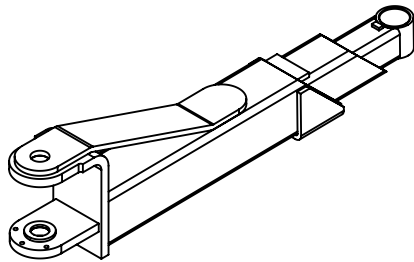
- REFER TO MODEL FOR ADDITIONAL INFORMATION
- BREAK AND DEBURR ALL SHARP EDGES 0.3mm
- REMOVE ALL WELD SPLATTER
- DIMENSIONS SHOWN ARE AFTER PAINTING
- PAINT BENDPAK GRAY (RAL-7024) 20% GLOSS

NEXT ASSEMBLY
5215356

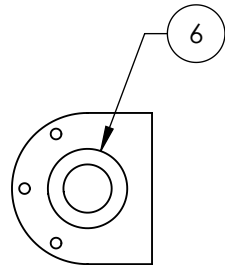
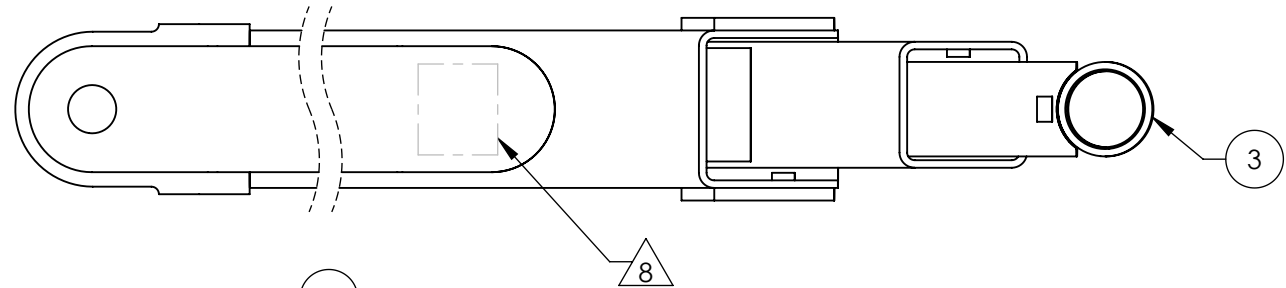
DO NOT SCALE DRAWING	NAME	DATE
DRAWN	TM	11/19/2009
CHECKED	OR	09/28/2021
THIRD ANGLE PROJECTION		
DIMENSIONS ARE IN MM TOLERANCES: 0. = ±1.5 0.0 = ±0.5 SURFACE FINISH 1.6 ISO Ra µm FOR MACHINED SURFACES UNLESS OTHERWISE SPECIFIED		
PROPRIETARY AND CONFIDENTIAL THE INFORMATION CONTAINED IN THIS DRAWING IS THE SOLE PROPERTY OF BENDPAK INC. ANY REPRODUCTION IN PART OR AS A WHOLE WITHOUT THE WRITTEN PERMISSION OF BENDPAK INC. IS PROHIBITED.		

BendPak.	
1645 LEMONWOOD DR. SANTA PAULA, CA 93060	
TITLE: XPR-12FDL POWER SIDE POST WELDMENT	
SIZE DWG. NO.	REV
A 5600382	M
SCALE: 1:10	
SHEET 1 OF 3	

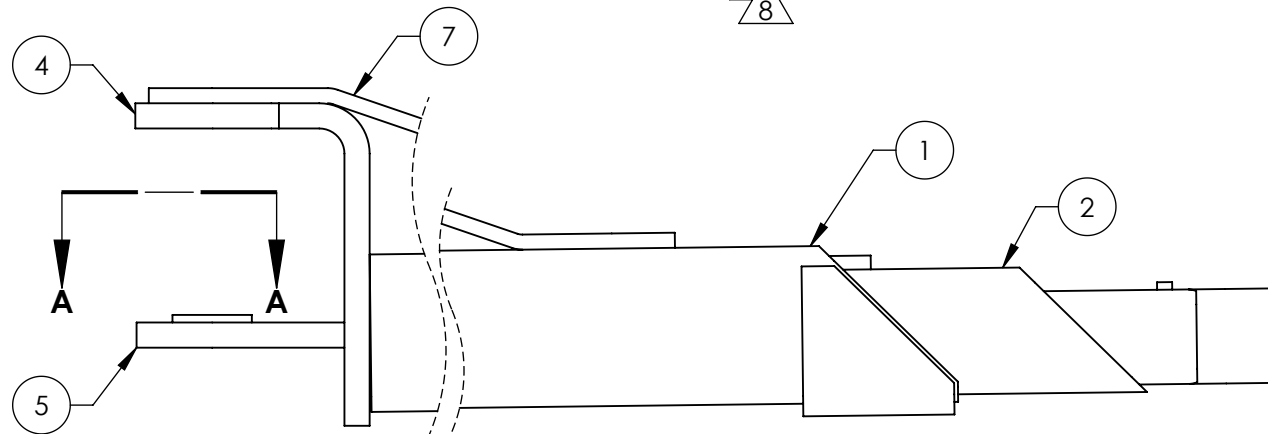
REVISION				
REV	DESCRIPTION	DATE	EDITED BY	ECO#
H	UPDATED BOM REVISION	05/30/2018	TM	00953
J	REPLACED 5736284 WITH 5737138, WAS 29 NOW 8, WAS 41 NOW 16, WAS 128 NOW 103	08/12/2019	CA	01117
K	5620355 DISTANCE WAS 8 NOW 11, WAS 16 NOW 19, WAS 103 NOW 109, UPDATED BOM REVISION	08/23/2019	TM	01123
K-001	ADDED GLOSS NOTE TO PAINT AND MANUFACTURER STAMP	02/07/2020	TM	01107



ISOMETRIC VIEW
FOR REFERENCE ONLY
DO NOT SCALE



SECTION A-A



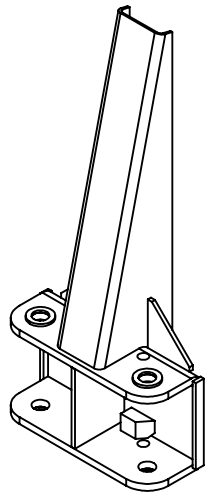
WHERE USED
XPR-12FDL
XPR-12CL
XPR-12CL-192

NOTE: UNLESS OTHERWISE SPECIFIED.

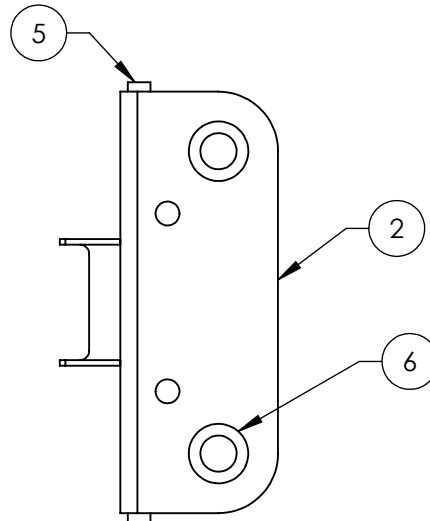
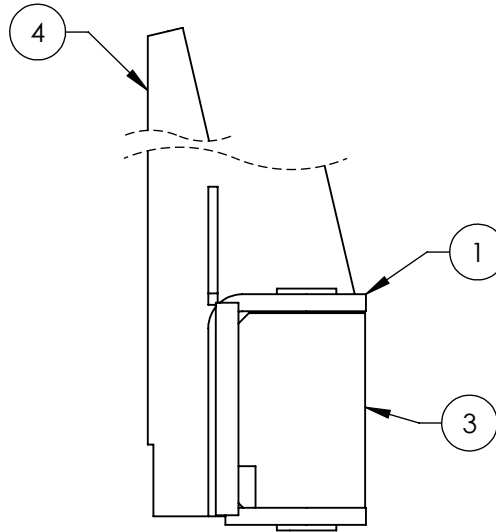
- REFER TO MODEL FOR ADDITIONAL INFORMATION
- BREAK AND DEBURR ALL SHARP EDGES 0.3mm
- REMOVE ALL WELD SPLATTER
- MASK ALL BORES BEFORE PAINTING
- DIMENSIONS SHOWN ARE AFTER PAINTING
- PAINT BENDPAK YELLOW (RAL-1018) 20% GLOSS
- 5620356 & 5620323 MUST SLIDE FREELY
- 10mm LETTER HEIGHT, 3mm ∇ MARK IN APPROXIMATE LOCATION WITH THE FOLLOWING :
MANUFACTURER CODE

ITEM NO	PART NUMBER	DESCRIPTION	QTY	REV
1	5620355	XPR-12 TRIPLE ARM OUTER SQUARE TUBE WELDMENT 657mm	1	G
2	5620356	XPR-12 TRIPLE ARM MIDDLE SQUARE TUBE WELDMENT (668mm)	1	D
3	5620323	XPR-12 TRIPLE ARM INNER SQUARE TUBE WELDMENT (667.5mm)	1	D
4	5701240	XPR-12 ARM EAR	1	C
5	5701070	XPR-12C/FD BOLT ON ARM EAR	1	C
6	5746564	XPR-9/10/12 REINFORCING WASHER	1	E
7	5737138	XPR-12CL/FDL ARM SUPPORT	1	B

DO NOT SCALE DRAWING		NAME	DATE
DRAWN		JM	06/23/2015
CHECKED		OR	04/08/2020
THIRD ANGLE PROJECTION			
DIMENSIONS ARE IN MM TOLERANCES: 0. = ± 1.5 0.0 = ± 0.5			
SURFACE FINISH 1.6 ISO Ra μ m FOR MACHINED SURFACES UNLESS OTHERWISE SPECIFIED			
NEXT ASSEMBLY 5215283			
BENDPAK		1645 LEMONWOOD DR. SANTA PAULA, CA 93060	
TITLE:		XPR-12CL/FDL TRIPLE TELESCOPING ARM WELDMENT	
SIZE DWG. NO.		A 5600993	
REV		K	
SCALE: 1:6		SHEET 1 OF 3	



ISOMETRIC VIEW
FOR REFERENCE ONLY
DO NOT SCALE

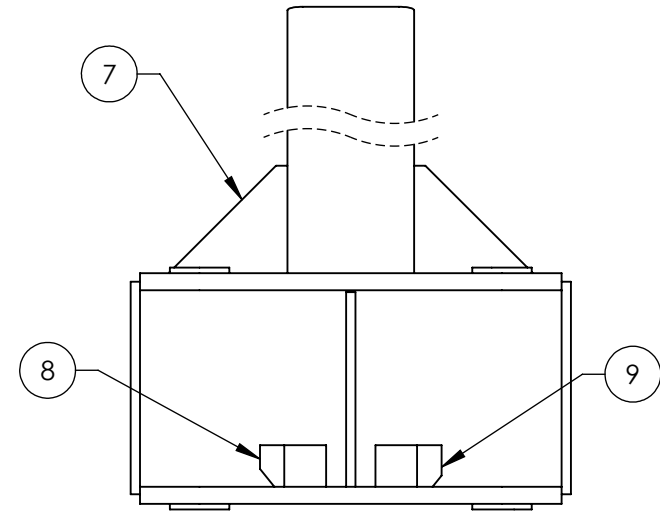


NOTE: UNLESS OTHERWISE SPECIFIED.

1. REFER TO MODEL FOR ADDITIONAL INFORMATION
2. BREAK AND DEBURR ALL SHARP EDGES 0.3mm
3. REMOVE ALL WELD SPLATTER

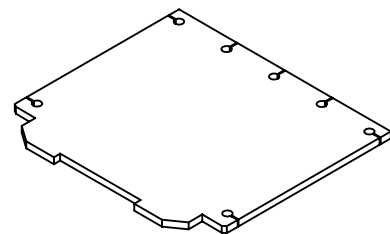
NEXT ASSEMBLY
5600393

REVISION				
REV	DESCRIPTION	DATE	EDITED BY	ECO#
E	UPDATED BOM REVISION	02/13/2014	TM	00640
F	UPDATED BOM REVISION	06/03/2014	TM	00649
G	UPDATED BOM REVISION	11/25/2015	TM	00738



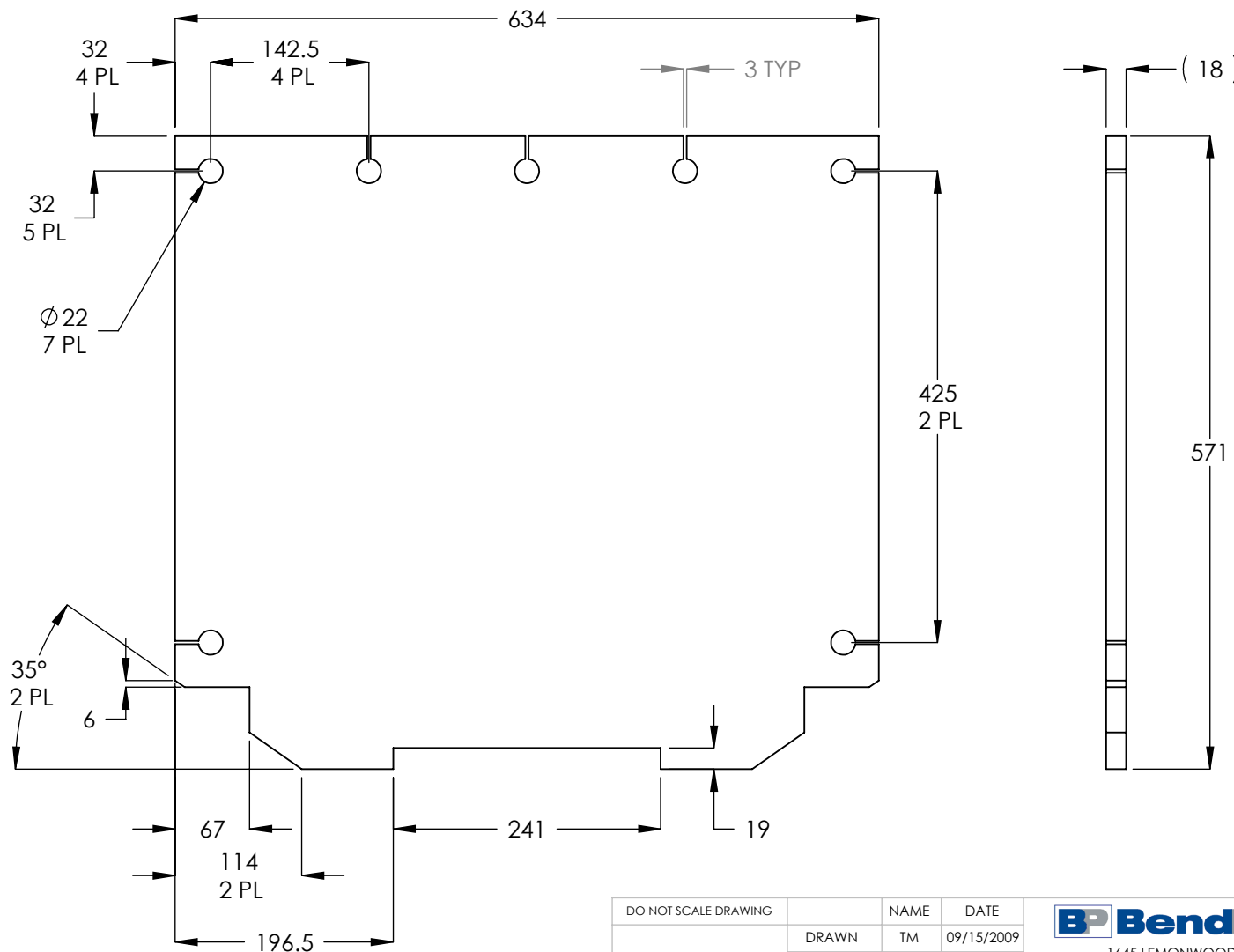
ITEM NO	PART NUMBER	DESCRIPTION	QTY	REV
1	5701222	XPR-12C/FD LIFT HEAD TOP ARM PLATE	1	D
2	5736262	XPR-12C/FD LIFT HEAD BOTTOM ARM PLATE	1	D
3	5735244	XPR-12C/FD/15/18C LIFT HEAD PLATE SPACER	1	A
4	5700197	XPR-12FD LIFT HEAD GUSSET	1	B
5	5730104	XPR-12C/FD/15/18C LIFT HEAD PLATE SUPPORT	2	A
6	5746564	D2-8/10/12, XPR-9/10/12 REINFORCING WASHER	4	E
7	5736259	10AP, D2, GP, XPR LIFT HEAD SIDE GUSSET	2	B
8	5736544	2 POST HEAVY DUTY ARM GEAR RESTRAINT STOP LH	1	A
9	5736546	2 POST HEAVY DUTY ARM GEAR RESTRAINT STOP RH	1	A

DO NOT SCALE DRAWING		NAME	DATE	 1645 LEMONWOOD DR. SANTA PAULA, CA 93060 TITLE: XPR-12FD LIFT HEAD GUSSET WELDMENT
DIMENSIONS ARE IN MM TOLERANCES: 0. = ±1.5 0.0 = ±0.5		DRAWN	TM 11/27/2009	
SURFACE FINISH 1.6 ISO Ra µm FOR MACHINED SURFACES UNLESS OTHERWISE SPECIFIED		CHECKED	CA 02/12/2016	
		THIRD ANGLE PROJECTION		SIZE DWG. NO.
				A 5620273
		PROPRIETARY AND CONFIDENTIAL THE INFORMATION CONTAINED IN THIS DRAWING IS THE SOLE PROPERTY OF BENDPAK INC. ANY REPRODUCTION IN PART OR AS A WHOLE WITHOUT THE WRITTEN PERMISSION OF BENDPAK INC. IS PROHIBITED.		REV G
		SCALE: 1:8		SHEET 1 OF 2



ISOMETRIC VIEW
FOR REFERENCE ONLY
DO NOT SCALE



REVISION				
REV	DESCRIPTION	DATE	EDITED BY	ECO#
A	PRODUCTION RELEASE, DERIVED FROM 800725	09/16/2009	TM	00293
B	ADDED RECTANGULAR CUTS	03/21/2011	TM	00449



NOTE: UNLESS OTHERWISE SPECIFIED.

1. REFER TO MODEL FOR ADDITIONAL INFORMATION
2. BREAK AND DEBURR ALL SHARP EDGES 0.3mm
3. **MATERIAL:** HR ASTM A36 OR Q235 GB/T 700

NEXT ASSEMBLY
5620358
5620372
5620373

DO NOT SCALE DRAWING		NAME		DATE			
DIMENSIONS ARE IN MM TOLERANCES: MACHINE TO 0 = ±1.5 0.0 = ±0.5 0.00 = ±0.13		DRAWN		TM		09/15/2009	
		CHECKED		MT		03/30/2011	
SURFACE FINISH 1.6 Ra µm FOR MACHINED SURFACES UNLESS OTHERWISE SPECIFIED		THIRD ANGLE PROJECTION				TITLE: XPR-12C/FD/15/18C BASE PLATE	
							
PROPRIETARY AND CONFIDENTIAL THE INFORMATION CONTAINED IN THIS DRAWING IS THE SOLE PROPERTY OF BENDPAK INC. ANY REPRODUCTION IN PART OR AS A WHOLE WITHOUT THE WRITTEN PERMISSION OF BENDPAK INC. IS PROHIBITED.		SIZE		DWG. NO.		REV	
		A		5736526		B	
		SCALE: 1:6		SHEET 1 OF 1			

PART SPECIFICATION FORM

BENDPAK Number:	5900952
MRP Description:	XPR-12FDL INSTALLATION MANUAL
Date:	03/30/2020
ECO :	---

1. Engineering Specification

Application:

INSTALLATION MANUAL

Detailed Description:



IMPORTANT SAFETY INSTRUCTIONS

SAVE THESE INSTRUCTIONS

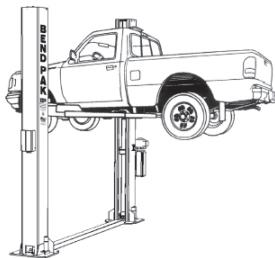
PLEASE READ THE ENTIRE CONTENTS OF THIS MANUAL PRIOR TO INSTALLATION AND OPERATION. BY PROCEEDING WITH LIFT INSTALLATION AND OPERATION YOU AGREE THAT YOU FULLY UNDERSTAND AND COMPREHEND THE FULL CONTENTS OF THIS DOCUMENT. FORWARD THIS MANUAL TO ALL OPERATORS. FAILURE TO OPERATE THIS EQUIPMENT AS DIRECTED MAY CAUSE INJURY OR DEATH.

Manual Revision A4 - March 2020
 Manual Part Number 5900952

INSTALLATION AND OPERATION MANUAL

12,000 POUND CAPACITY
 SURFACE MOUNTED TWO-POST LIFTS

MODEL:
 XPR-12FDL



READ FIRST



Do not operate this machine until you read and understand all the dangers, warnings, and cautions in this manual.

RECEIVING

The shipment should be thoroughly inspected as soon as it is received. The signed Bill of Lading is acknowledgement by the shipping carrier as receipt of this product as listed in your invoice as being in a good condition of shipment. If any of these goods listed on this Bill of Lading are missing or damaged, do not accept goods until the shipping carrier makes a notation on the freight bill of the missing or damaged goods. Do this for your own protection.

BE SAFE

Your new lift was designed and built with safety in mind. However, your overall safety can be increased with proper training and thoughtful operation on the part of the operator. DO NOT operate or repair this equipment without reading this manual and the important safety instructions shown inside. Keep this operation manual near the lift at all times. Make sure that ALL USERS read and understand this manual.



1645 Lemonwood Dr.
 Santa Paula, CA. 93060, USA
 Toll Free 1-800-253-2363
 Tel: 1-805-933-9970
 www.bendpak.com

Print Settings for BendPak Manuals

Unless otherwise specified, use these settings for printing BendPak manuals:

- **Color.** Black and white.
- **Size.** A4 (210 to 297 mm), 8.5 by 11 inches (216 to 279mm), or between
- **Binding.** Saddle stitched
- **Paper.** 100 to 120 gsm (27 to 32 pound), uncoated

2. Vendor Information

Approved Vendor	Vendor Part #	Contact #	Preferred Vendor
1)			

PART SPECIFICATION FORM

BENDPAK Number:	5905109
MRP Description:	WARNING ALI/WL 101C
Date:	08/03/2017
ECO :	00850

1. Engineering Specification

Application:

ALI 2 POST SAFETY STICKER KIT

Detailed Description:

SIZE: ALI 2 POST CAUTION LABELS: 14" L x 8.5" W (356mm x 216mm)

ALI NOTICE LABEL: 1.75" L x 3" W (4.5mm x 76mm)

Automotive Lift Institute, Inc
WL 101 Series
Label Kit

NOTICE

If attachments, modifications, or configuration changes are made to the lift, the lift's electrical, lifting, or other safety features may be affected. The user must consult the lift's manual for more information. The participant for information pertaining to certified attachments, accessories, or configuration modifying components.

www.aliinfo.org ©2011 by ALI, Inc. ALI WL101KIT

2. Vendor Information

Approved Vendor	Vendor Part #	Contact #	Preferred Vendor
1) ALI	WL 101 a, b, & c / WL101I A01		

PART SPECIFICATION FORM (STANDARD)

BENDPAK Number:	5905950
MRP Description:	SERIAL TAG A
Date:	03/10/2020
ECO :	01107

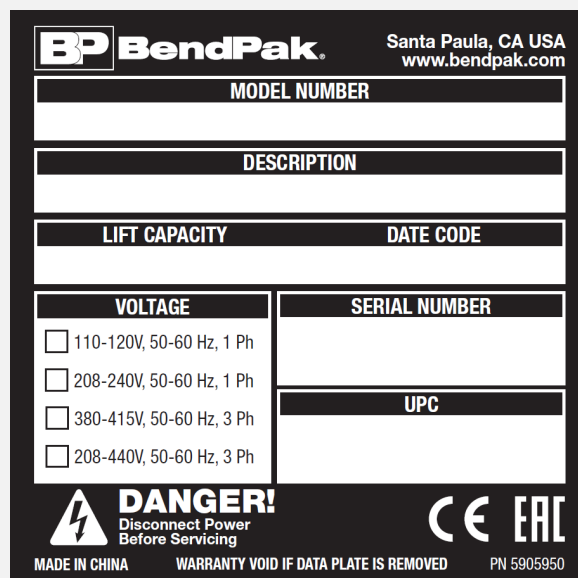
1. Engineering Specification

Application:

DATA SERIAL TAG 2 POST CE

Detailed Description:

Size	3" L x 3" W (76.2mm x 76.2mm)
Ink	1 Color-Black
Material	2 Mil. Gloss Polyester Thermal Transfer Label With A High Performance Permanent Acrylic Adhesive.



BendPak Santa Paula, CA USA
www.bendpak.com

MODEL NUMBER	
DESCRIPTION	
LIFT CAPACITY	DATE CODE
VOLTAGE	
<input type="checkbox"/> 110-120V, 50-60 Hz, 1 Ph <input type="checkbox"/> 208-240V, 50-60 Hz, 1 Ph <input type="checkbox"/> 380-415V, 50-60 Hz, 3 Ph <input type="checkbox"/> 208-440V, 50-60 Hz, 3 Ph	
SERIAL NUMBER	
UPC	

DANGER!
Disconnect Power Before Servicing

MADE IN CHINA WARRANTY VOID IF DATA PLATE IS REMOVED PN 5905950

CE EAC

2. Vendor Information (Or for Reference)

Approved Vendor	Vendor Part #	Reference #	Preferred Vendor
1)			
OR BENDPAK ENGINEERING APPROVED EQUIVALENT			

PART SPECIFICATION FORM STANDARD

BENDPAK Number:	5905177
MRP Description:	TO PROLONG LIFT OF TWO
Date:	01/26/20/21
ECO :	01267

1. Engineering Specification**Application:**

RED CYLINDER WARNING

Detailed Description:

Size: 3" L x 1.75" W (76mm x 44mm)

Material: White Vinyl Pressure Sensitive Adhesive

Thickness: 4 Mil

Ink: U.V. protected CMYK 2/C Process

Finish: Matte Overlamine (No gloss)

Print Process: Offset Lithography - 200 line-screen
or 300 p.p.i. for digitalLamination: Clear laminate Non-glare medium
matte over-lamine for abrasion, chemical, and
ultra violet protection**PLEASE READ**

Internal packing oil may cause
the cylinders to bleed oil
during start up. This is normal.
To extend cylinder and seal life,
raise the lift to full height at
least once every day.

2. Vendor Information (Or for Reference)

Approved Vendor	Vendor Part #	Contact #	Preferred Vendor
1)			
OR BENDPAK ENGINEERING APPROVED EQUIVALENT			

PART SPECIFICATION FORM STANDARD

BENDPAK Number:	5905311
MRP Description:	BENDPAK LABEL; 4 x 38" WHITE INK
Date:	01/04/2021
ECO :	01249

1. Engineering Specification

Application:

BRANDING LABEL

Detailed Description:

Size: 4.25" W x 38" H (107.95mm x 965.2mm)

Material: Clear Adhesive PET

Thickness: 4 Mil

Ink: U.V. protected, Opaque White

Finish: Matte Overlamine (No gloss)

Print Process: Silk Screen, 85 line-screen (Yellow color in file represents what should be clear PET material and SHOULD NOT print as Yellow ink. White area in file represents Opaque White ink.)

Lamination: Clear laminate non-glare medium matte over-lamine (No gloss) for abrasion, chemical, and ultra violet protection



2. Vendor Information (Or for Reference)

Approved Vendor	Vendor Part #	Contact #	Preferred Vendor
1)			
OR BENDPAK ENGINEERING APPROVED EQUIVALENT			

PART SPECIFICATION FORM STANDARD

BENDPAK Number:	5905404
MRP Description:	MAX CAPACITY 12K DANGER LABEL, ENGLISH-FRENCH
Date:	01/05/2021
ECO :	01254

1. Engineering Specification

Application:

LIFT CAPACITY LABEL

Detailed Description:

Size: 4"W x 8.5"H (101.6mm x 215.9mm)

Material: White Vinyl Pressure Sensitive Adhesive

Thickness: 4 Mil

Ink: U.V. protected CMYK 2/C Process

Finish: Matte Overlamine (No gloss)

Print Process: Offset Lithography - 200 line-screen or 300 p.p.i. for digital

Lamination: Clear laminate non-glare medium matte over-lamine (No gloss) for abrasion, chemical, and ultra violet protection



2. Vendor Information (Or for Reference)

Approved Vendor	Vendor Part #	Contact #	Preferred Vendor
1)			
OR BENDPAK ENGINEERING APPROVED EQUIVALENT			

PART SPECIFICATION FORM STANDARD

BENDPAK Number:	5905414
MRP Description:	GP/XPR LOCK-RELEASE LABEL
Date:	01/26/2021
ECO :	01267

1. Engineering Specification

Application:

INSTRUCTION LABEL

Detailed Description:

Size: 4"W x 2"H (101.6mm x 51mm)

Material: White Vinyl Pressure Sensitive Adhesive

Thickness: 4 Mil

Ink: U.V. protected CMYK 2/C Process

Finish: Matte Overlamine (No gloss)

Print Process: Offset Lithography - 200 line-screen or 300 p.p.i. for digital

Lamination: Clear laminate Non-glare medium matte over-lamine for abrasion, chemical, and ultra violet protection

TO RAISE LIFT:

1. Press and hold **UP** button.
2. When lift is just **PAST** desired height, release **UP** button.
3. Hold down Lowering Handle.
DO NOT hold down Safety Lock Release Handle.
Lift engages on safety locks.
4. Release Lowering Handle.

TO LOWER LIFT:

1. Press and hold **UP** button for two to three seconds, moving lift off safety locks.
2. Hold down Safety Lock Release Handle **and** Lowering Handle.
3. When lift is fully lowered, release both handles.

PN 5905414

2. Vendor Information (Or for Reference)

Approved Vendor	Vendor Part #	Contact #	Preferred Vendor
1)			
OR BENDPAK ENGINEERING APPROVED EQUIVALENT			

PART SPECIFICATION FORM STANDARD

BENDPAK Number:	5905555
MRP Description:	2 POST SAFETY LABEL, ENGLISH-FRENCH
Date:	01/26/2021
ECO :	01267

1. Engineering Specification

Application:

2 POST SAFETY WARNING LABEL

Detailed Description:

Size: 8.5" W x 35.75" H (216mm x 908.1mm)

Material: White Vinyl Pressure Sensitive Adhesive

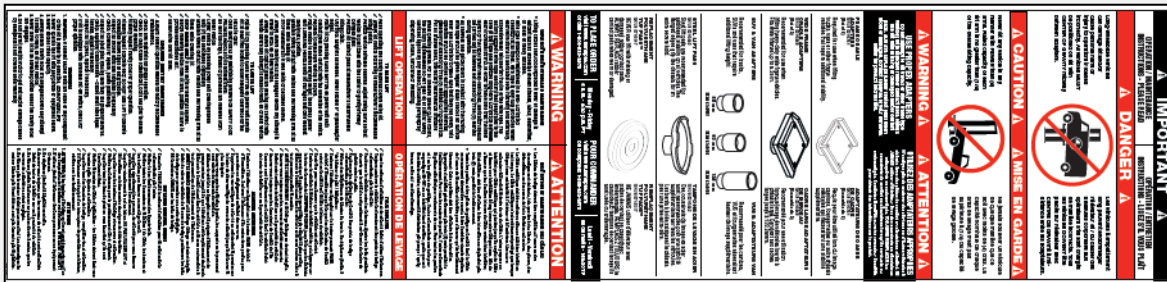
Thickness: 4 Mil

Ink: U.V. protected CMYK 2/C Process

Finish: Matte Overlamine (No gloss)

Print Process: Offset Lithography - 200 line-screen or 300 p.p.i. for digital

Lamination: Clear laminate Non-glare medium matte over-laminate for abrasion, chemical, and ultra violet protection



2. Vendor Information (Or for Reference)

Approved Vendor	Vendor Part #	Contact #	Preferred Vendor
1)			
OR BENDPAK ENGINEERING APPROVED EQUIVALENT			

PART SPECIFICATION FORM STANDARD

BENDPAK Number:	5905660
MRP Description:	MAX CAPACITY NTRL 12K LABEL, ENGLISH-FRENCH
Date:	01/05/2021
ECO :	01254

1. Engineering Specification

Application:

LIFT CAPACITY LABEL

Detailed Description:

Size: 4.5"W x 3.25"H (114.3mm x 82.55mm)

Material: White Vinyl Pressure Sensitive Adhesive

Thickness: 4 Mil

Ink: U.V. protected CMYK 2/C Process

Finish: Matte Overlamine (No gloss)

Print Process: Offset Lithography - 200 line-screen or 300 p.p.i. for digital

Lamination: Clear laminate non-glare medium matte over-lamine (No gloss) for abrasion, chemical, and ultra violet protection



2. Vendor Information (Or for Reference)

Approved Vendor	Vendor Part #	Contact #	Preferred Vendor
1)			
OR BENDPAK ENGINEERING APPROVED EQUIVALENT			

PART SPECIFICATION FORM STANDARD

BENDPAK Number:	5906044
MRP Description:	AMERICAN OWNED LABEL
Date:	04/14/2021
ECO :	01277

1. Engineering Specification**Application:**

BRANDING LABEL

Detailed Description:

Size: 3"W x 4"H (76.2mm x 101.6mm)

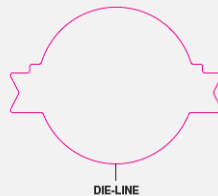
Material: 4 Mil. White Adhesive Vinyl

Ink: U.V. protected, CMYK 4/C Process

Finish: Matte Overlaminate (no gloss)

Print Process: Offset Lithography - 200 line-screen or 300 p.p.i. for digital

Lamination: Clear laminate non-glare medium matte over laminate for abrasion, chemical, and ultra violet protection

**2. Vendor Information (Or for Reference)**

Approved Vendor	Vendor Part #	Contact #	Preferred Vendor
1)			
OR BENDPAK ENGINEERING APPROVED EQUIVALENT			

PART SPECIFICATION FORM (STANDARD)

BENDPAK Number:	5905285
MRP Description:	SERIAL TAG EXTERIOR PEEL OFF INVENTORY LABEL
Date:	04/20/2016
ECO :	00739

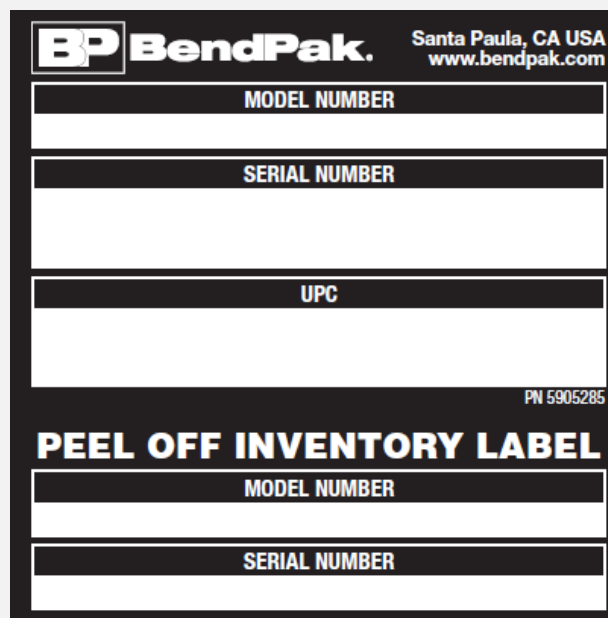
1. Engineering Specification

Application:

DATA SERIAL TAG

Detailed Description:

Size	3" W x 3" H (76.2mm x 76.2mm)
Ink	1 Color-Black
Material	2 Mil. Gloss Polyester Thermal Transfer Label With A High Performance Permanent Acrylic Adhesive.



BendPak. Santa Paula, CA USA
www.bendpak.com

MODEL NUMBER

SERIAL NUMBER

UPC

PN 5905285

PEEL OFF INVENTORY LABEL

MODEL NUMBER

SERIAL NUMBER

2. Vendor Information (Or for Reference)

Approved Vendor	Vendor Part #	Reference #	Preferred Vendor
1)			
OR BENDPAK ENGINEERING APPROVED EQUIVALENT			

PART SPECIFICATION FORM STANDARD

BENDPAK Number:	5905465
MRP Description:	MANUFACTURER LABEL
Date:	10/19/2020
ECO :	01220

1. Engineering Specification

Application:

MANUFACTURER LABEL


Detailed Description:

Size: 6" W x 3.75" H (152.4mm x 95.3mm)

Material: White Adhesive Paper

Ink: 1 Color-Black

Print Process: Offset Lithography - 200 line screen or 300 p.p.i. for digital

MFD. BY BENDPAK INC.				
LIFT TYPE: SURFACE MOUNT	CAPACITY: MED/HVY DTY	INSTALLATION: SEE OWNERS GUIDE OR CONTACT FACTORY		
POWER: ELECTRIC/HYDRAULIC	ANCHORS: AS EQUIPPED			
SHIPPING DAMAGE CLAIMS WHEN THIS EQUIPMENT IS SHIPPED, TITLE PASSES TO THE PURCHASER UPON RECEIPT FROM THE CARRIER. CONSEQUENTLY, CLAIMS FOR THE MATERIAL DAMAGED IN SHIPMENT MUST BE MADE BY THE PURCHASER AGAINST THE TRANSPORTATION COMPANY AT THE TIME SHIPMENT IS RECEIVED.				
PLEASE READ ALL OPERATORS/USERS MANUAL(S) PRIOR TO INSTALLATION AND OPERATION. UNDERSTAND AND COMPREHEND THE FULL CONTENTS OF EACH MANUAL(S) PRIOR TO INSTALLATION AND OPERATION. DELIVER THE MANUAL(S) TO ALL OPERATORS. FAILURE TO OPERATE THIS EQUIPMENT AS DIRECTED MAY CAUSE INJURY OR DEATH.				
IMPORTANT NOTE: BENDPAK LIFTS ARE SUPPLIED WITH CONCRETE FASTENERS MEETING THE CRITERIA AS PRESCRIBED BY ASTM E488 - 96(2003). LIFT BUYERS ARE RESPONSIBLE FOR ANY SPECIAL REGIONAL STRUCTURAL AND/OR SEISMIC ANCHORING REQUIREMENTS SPECIFIED BY ANY OTHER AGENCIES AND/OR CODES SUCH AS THE UNIFORM BUILDING CODE (UBC) AND/OR INTERNATIONAL BUILDING CODE (IBC).				
THE MANUFACTURE, USE, SALE OR IMPORT OF THIS PRODUCT MAY BE SUBJECT TO ONE OR MORE UNITED STATES PATENTS, OR PENDING APPLICATIONS, OWNED BY BENDPAK, INC.				
				
INTERNAL BAR CODE - FOR FACTORY AUDIT ONLY 34086				
BPK	STYOT	P20KVR	X18576	HVY DTY/ GVR 832
MADE IN CHINA	ENGINEERED BY BENDPAK INC USA			PN 5905465

2. Vendor Information (Or for Reference)

Approved Vendor	Vendor Part #	Contact #	Preferred Vendor
1)			
OR BENDPAK ENGINEERING APPROVED EQUIVALENT			

PART SPECIFICATION FORM STANDARD

BENDPAK Number:	5905775
MRP Description:	CALIFORNIA PROP. 65 LABEL
Date:	07/16/2021
ECO :	01314

1. Engineering Specification**Application:**

WARNING LABEL

Detailed Description:**Size:** 1.5" W x 1.5" H (38.1mm x 38.1mm)**Material:** White Vinyl Pressure Sensitive Adhesive**Thickness:** 4 Mil**Ink:** U.V. protected CMYK 2/C Process**Finish:** Matte Overlamine (No gloss)**Print Process:** Offset Lithography - 200 line-screen or 300 p.p.i. for digital**Lamination:** Clear laminate Non-glare medium matte over-lamine (No Gloss) for abrasion, chemical, and ultra violet protection.**CALIFORNIA PROPOSITION 65****⚠ WARNING ⚠****WARNING:** This product contains chemicals known to the State of California to cause cancer and birth defects or other reproductive harm.**ADVERTENCIA:** Este producto contiene sustancias químicas reconocidas por el estado de California como causantes de cáncer y defectos de nacimiento u otros daños reproductivos.For more information visit:
www.P65Warnings.ca.gov**2. Vendor Information (Or for Reference)**

Approved Vendor	Vendor Part #	Contact #	Preferred Vendor
1)			
OR BENDPAK ENGINEERING APPROVED EQUIVALENT			

PART SPECIFICATION FORM STANDARD

BENDPAK Number:	5905940
MRP Description:	PRODUCT DATA LABEL
Date:	12/30/2020
ECO :	01249

1. Engineering Specification

Application:

PRODUCT DATA LABEL

Detailed Description:

Size: 4.5"W x 2.75"H (114.3mm x 69.9mm)

Material: White Vinyl Pressure Sensitive Adhesive


Thickness: 4 Mil

Ink: U.V. protected CMYK 2/C Process

Finish: Matte Overlamine (No gloss)

Print Process: Offset Lithography - 200 line-screen or 300 p.p.i. for digital

Lamination: Clear laminate Non-glare medium matte over-lamine (No gloss) for abrasion, chemical, and ultra violet protection



1645 Lemonwood Dr.
Santa Paula, CA USA
www.BendPak.com

LIFT TYPE: Surface Mount	MANUFACTURER: BendPak. See data plate for product details
POWER: Electric/Hydraulic	INSTALLATION: See manual or contact factory

Safety Instructions: If attachments, accessories, or configuration-modifying components that are located in the load path affect operation of the lift, affect the lift electrical listing, or affect intended vehicle accommodation are used on this lift and, if they are not certified for use on this lift, then the certification of this lift shall become null and void. Contact the participant for information pertaining to certified attachments, accessories, or configuration-modifying components.

BendPak lifts are supplied with concrete fasteners meeting the criteria as prescribed by ASTM E488/E488M-18. Lift buyers are responsible for any special regional, structural, and/or seismic anchoring requirements specified by any other agencies and/or codes such as the Uniform Building Code (UBC) and/or International Building Code (IBC).

The manufacture, use, sale, or import of this product may be subject to one or more United States patents, or pending applications, owned by **BendPak Inc.**

Do Not Remove
Engineered by BendPak Inc., USA
Made in China

2. Vendor Information (Or for Reference)

Approved Vendor	Vendor Part #	Contact #	Preferred Vendor
1)			
OR BENDPAK ENGINEERING APPROVED EQUIVALENT			

2-Post Lifts (ALI approved) Product Decal Positioning

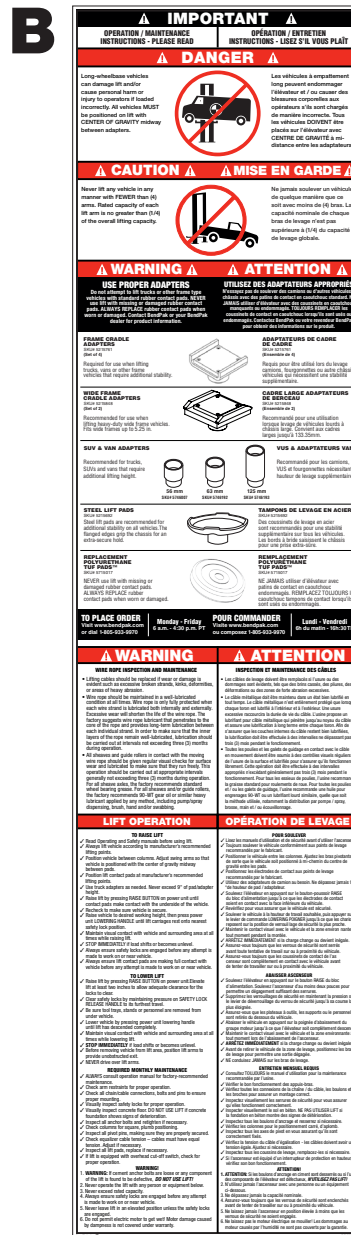


P/N 5905311

BPK Post Lift Decal.pdf
Material: Clear Adhesive PET
Size: 4.25"W x 38"H
Thickness: 4 Mil
Finish: Matte Overlamine (No Gloss)
Ink: U.V. protected, Opaque White
Print Process: Silk Screen, 85 line-screen (**Yellow color in file represents what should be clear PET material and SHOULD NOT print as Yellow ink. White area in file represents Opaque White ink.**)
Lamination: Clear Laminate non-glare medium matte over laminate for abrasion, chemical, and ultra violet protection.

Total of 4

**CLEAR ADHESIVE PET
DOES NOT PRINT YELLOW**



P/N 5905555

**XPR-S Series 2-Post Safety
Decal-FRE-ENG-5905555.pdf:**

Size: 8.5"W x 35.75"H
Material: White Vinyl Pressure Sensitive Adhesive
Thickness: 4 Mil
Ink: U.V. protected CMYK 2/C Process

Finish: Matte Overlamine (No Gloss)
Print Process: Offset Lithography - 200 line-screen or 300 p.p.i. for digital

Lamination: Clear Laminate non-glare medium matte over laminate for abrasion, chemical, and ultra violet protection.

NOTE:
Place adjacent to power unit below safety lock release handle

C

BP BendPak

1645 Lemonwood Dr.
Santa Paula, CA USA
www.BendPak.com

LIFT TYPE: Surface Mount **MANUFACTURER:** BendPak. See data plate for product details
POWER: Electric/Hydraulic **INSTALLATION:** See manual or contact factory

Safety Instructions: If attachments, accessories, or configuration-modifying components that are located in the load path affect operation of the lift, affect the lift electrical listing, or affect intended vehicle accommodation are used on this lift and, if they are not certified for use on this lift, then the certification of this lift shall become null and void. Contact the participant for information pertaining to certified attachments, accessories, or configuration-modifying components.

BendPak lifts are supplied with concrete fasteners meeting the criteria as prescribed by ASTM E488/E488M-18. Lift buyers are responsible for any special regional, structural, and/or seismic anchoring requirements specified by any other agencies and/or codes such as the Uniform Building Code (UBC) and/or International Building Code (IBC).

The manufacture, use, sale, or import of this product may be subject to one or more United States patents, or pending applications, owned by **BendPak Inc.**

Do Not Remove **Engineered by BendPak Inc., USA** **PN 5905940** **Made in China**

Product Data Label 5905940.pdf:

Size: 4.5"W x 2.75"H
Material: White Vinyl Pressure Sensitive Adhesive
Thickness: 4 Mil

Ink: U.V. protected CMYK 2/C Process
Finish: Matte Overlamine (No Gloss)
Print Process: Offset Lithography - 200 line-screen or 300 p.p.i. for digital
Lamination: Clear Laminate non-glare medium matte over laminate for abrasion, chemical, and ultra violet protection.

P/N 5905940

2-Post Lifts (ALI approved) Product Decal Positioning

***D**

⚠ DANGER
THE MAXIMUM LIFTING CAPACITY FOR THIS LIFT IS DESCRIBED BELOW

Maximum Lifting Capacity
Max. Lifting Cap. / Front of Lift Center
Max. Lifting Cap. / Rear of Lift Center

Exceeding the weight capacity of this lift can damage lift and/or property and may cause personal harm, injury or death to operators and/or bystanders. All vehicles MUST be positioned on lift with CENTER OF GRAVITY midway between adapters and/or centered on runways. Damage to lift due to overloading or misuse IS NOT covered under warranty.

LA CAPACITÉ DE LEVAGE MAXIMUM POUR CE LEVAGE EST DÉCRIT CI-DESSOUS

Capacité de Levage Maximale
Max. Capuchon De Levage. / Avant du centre de relèvement
Max. Capuchon De Levage. / Arrière du centre de levage

Le dépassement de la capacité de poids de cet élévateur peut endommager l'ascenseur et / ou les biens et peut causer des dommages corporels, des blessures voire la mort aux opérateurs et / ou aux passants. Tous les véhicules DOIVENT être placés sur l'élévateur avec le CENTRE DE GRAVITÉ à mi-chemin entre les adaptateurs et / ou au centre des pistes. Dommages à soulever dus à la surcharge ou une mauvaise utilisation N'EST PAS couverte par la garantie.

***Max. Cap. Danger ENG-FRE.pdf:**

Size: 4"W x 8.5"H

Material: White Vinyl Pressure Sensitive Adhesive

Thickness: 4 Mil

Ink: U.V. protected CMYK 2/C Process

Finish: Matte Overlamine (No Gloss)

Print Process: Offset Lithography - 200 line-screen or 300 p.p.i. for digital

Lamination: Clear Lamine non-glare medium matte over laminate for abrasion, chemical, and ultra violet protection.

P/N 5905401 - Max Cap. Danger 7k ENG-FRE
P/N 5905402 - Max Cap. Danger 9k ENG-FRE
P/N 5905403 - Max Cap. Danger 10k ENG-FRE
P/N 5905404 - Max Cap. Danger 12k ENG-FRE
P/N 5905405 - Max Cap. Danger 15k ENG-FRE
P/N 5905406 - Max Cap. Danger 18k ENG-FRE

***E**

⚠ ATTENTION ⚠
MAXIMUM LIFTING CAPACITY
CAPACITÉ DE LEVAGE MAXIMUM
6000 Lbs.
2722 Kg.

P/N 5905645 - NRTL Lifting Cap 7K ENG-FRE
P/N 5905650 - NRTL Lifting Cap 9K ENG-FRE
P/N 5905655 - NRTL Lifting Cap 10K ENG-FRE
P/N 5905660 - NRTL Lifting Cap 12K ENG-FRE
P/N 5905670 - NRTL Lifting Cap 15K ENG-FRE
P/N 5905675 - NRTL Lifting Cap 18K ENG-FRE

***NRTL Lifting Cap ENG-FRE.pdf:**

Size: 4.5"W x 3.25"H

Material: White Vinyl Pressure Sensitive Adhesive

Thickness: 4 Mil

Ink: U.V. protected CMYK 2/C Process

Finish: Matte Overlamine (No Gloss)

Print Process: Offset Lithography - 200 line-screen or 300 p.p.i. for digital

Lamination: Clear Lamine non-glare medium matte over laminate for abrasion, chemical, and ultra violet protection.

***DEPENDS ON LIFT MODEL AND CAPACITY**

F

NOTICE

Read operating and safety manuals before using lift.

NOTICE

Proper maintenance and inspection is necessary for safe operation.

NOTICE

Do not operate a damaged lift.

The messages and pictographs shown are generic in nature and are meant to generally represent hazards common to all automotive lifts regardless of specific style.

Funding for the development and validation of these labels was provided by the Automotive Lift Institute, PO Box 33116 Indianapolis, FL 32903.

They are protected by copyright. Set of labels may be obtained from ALI or its member companies.

© 1992 by ALI, Inc. ALIWL101a

ALI Blue Label

P/N 5905109
(Kit includes Blue, Yellow & Orange Labels)
(Order Labels from ALI)

⚠ CAUTION

Lift to be used by trained operator only.

⚠ CAUTION

Authorized personnel only in lift area.

⚠ CAUTION

Use vehicle manufacturer's lift points.

⚠ CAUTION

Always use safety stands when removing or installing heavy components.

⚠ CAUTION

Use height extenders when necessary to ensure good contact.

⚠ CAUTION

Auxiliary adapters may reduce load capacity.

The messages and pictographs shown are generic in nature and are meant to generally represent hazards common to all automotive lifts regardless of specific style.

Funding for the development and validation of these labels was provided by the Automotive Lift Institute, PO Box 33116 Indianapolis, FL 32903.

They are protected by copyright. Set of labels may be obtained from ALI or its member companies.

© 1992 by ALI, Inc. ALIWL101b

ALI Yellow Label

⚠ WARNING

Clear area if vehicle is in danger of falling.

⚠ WARNING

Position vehicle with center of gravity midway between adapters.

⚠ WARNING

Remain clear of lift when raising or lowering vehicle.

⚠ WARNING

Avoid excessive rocking of vehicle while on lift.

⚠ WARNING

Do not override self-closing lift controls.

⚠ WARNING

Keep feet clear of lift while lowering.

The messages and pictographs shown are generic in nature and are meant to generally represent hazards common to all automotive lifts regardless of specific style.

Funding for the development and validation of these labels was provided by the Automotive Lift Institute, PO Box 33116 Indianapolis, FL 32903.

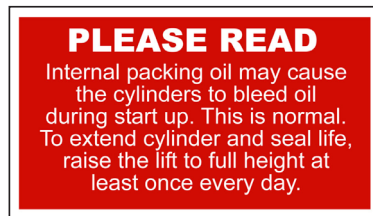
They are protected by copyright. Set of labels may be obtained from ALI or its member companies.

© 1992 by ALI, Inc. ALIWL101c

ALI Orange Label

2-Post Lifts (ALI approved) Product Decal Positioning

G



P/N 5905177
Place on BOTH Posts

LR-60_Warning_Instructions_Label.pdf:

Size: 3"W x 1.75"H

Material: White Vinyl Pressure Sensitive Adhesive

Thickness: 4 Mil

Ink: U.V. protected CMYK 2/C Process

Finish: Matte Overlaminate (No Gloss)

Print Process: Offset Lithography - 200 line-screen or 300 p.p.i. for digital

Lamination: Clear Laminate non-glare medium matte over laminate for abrasion, chemical, and ultra violet protection.

H



PN 5905653

5905653 - LABEL; ALI-ALCTV-2017
GOLD LABEL, US; MET LABS

I



ALI_Notice_Label.jpg

Size: 3"W x 1.75"H

(Order Labels from ALI)

P/N 5905377

J

BP BendPak Santa Paula, CA USA www.bendpak.com	
MODEL NUMBER	
DESCRIPTION	
LIFT CAPACITY	DATE CODE
VOLTAGE	SERIAL NUMBER
<input type="checkbox"/> 110-240V, 50-60 Hz, 1 Ph <input type="checkbox"/> 208-240V, 50-60 Hz, 1 Ph <input type="checkbox"/> 380-415V, 50-60 Hz, 3 Ph <input type="checkbox"/> 208-440V, 50-60 Hz, 3 Ph	UPC
DANGER! Disconnect Power Before Servicing WARRANTY VOID IF DATA PLATE IS REMOVED PN 5905951	

2017_Serial_Tag-B-5905951.pdf:

Size: 3"W x 3"H

Material: 2 Mil. Gloss polyester thermal transfer label with a high performance permanent acrylic adhesive.

Ink: 1 Color-Black

***FOR NON-CE APPROVED LIFTS ONLY**

P/N 5905951

2-Post Lifts (ALI approved) Product Decal Positioning

K

BP BendPak Santa Paula, CA USA www.bendpak.com	
MODEL NUMBER	
DESCRIPTION	
LIFT CAPACITY	DATE CODE
VOLTAGE	SERIAL NUMBER
<input type="checkbox"/> 110-240V, 50-60 Hz, 1 Ph	UPC
<input type="checkbox"/> 208-240V, 50-60 Hz, 1 Ph	
<input type="checkbox"/> 380-415V, 50-60 Hz, 3 Ph	
<input type="checkbox"/> 208-440V, 50-60 Hz, 3 Ph	
DANGER! Disconnect Power Before Servicing WARRANTY VOID IF DATA PLATE IS REMOVED PN 5905950	
CE EAC	

2017_Serial_Tag-A-5905950.pdf:

Size: 3"W x 3"H

Material: 2 Mil. Gloss polyester thermal transfer label with a high performance permanent acrylic adhesive.

Ink: 1 Color-Black

***FOR CE APPROVED LIFTS ONLY**

P/N 5905950

L

TO RAISE LIFT:

1. Press and hold **UP** button.
2. When lift is just **PAST** desired height, release **UP** button.
3. Hold down Lowering Handle.
DO NOT hold down Safety Lock Release Handle.
Lift engages on safety locks.
4. Release Lowering Handle.

TO LOWER LIFT:

1. Press and hold **UP** button for two to three seconds, moving lift off safety locks.
2. Hold down Safety Lock Release Handle **and** Lowering Handle.
3. When lift is fully lowered, release both handles.

PN 5905414

P/N 5905414

2-Post_Lock-Release_Label.pdf:

Size: 4"W x 2"H

Material: White Vinyl Pressure Sensitive Adhesive

Thickness: 4 Mil

Ink: U.V. protected CMYK 2/C Process

Finish: Matte Overlamine (No Gloss)

Print Process: Offset Lithography - 200 line-screen or 300 p.p.i. for digital

Lamination: Clear Laminate non-glare medium matte over laminate for abrasion, chemical, and ultra violet protection.

M



NOTE: GRAY DOES NOT PRINT

NOTE: DIE-CUT TO SHAPE

PN 5906044

American_Owned_50_Years_Logo.pdf:

Trim: 3"W x 4"H

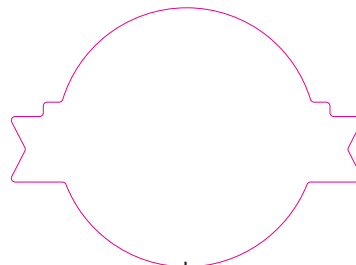
Material: 4 Mil. White Adhesive Vinyl

Ink: U.V. protected CMYK 4/C Process

Finish: Matte Overlamine (No Gloss)

Print Process: Offset Lithography - 200 line-screen or 300 p.p.i. for digital

Lamination: Clear Laminate non-glare medium matte over laminate for abrasion, chemical, and ultra violet protection



DIE-LINE

2-Post Lifts (ALI approved) Product Decal Positioning

**FRONT OF
POWERSIDE POST**

**ADJACENT TO PU
POWERSIDE POST**

**BACK OF
POWERSIDE POST**

