

# Service Manual

## SERVICE PARTS & DIAGRAMS

### BENDPAK XPR-9DS

PRODUCT SKU  
**5175393**

DRAWING Nº  
**5260555**

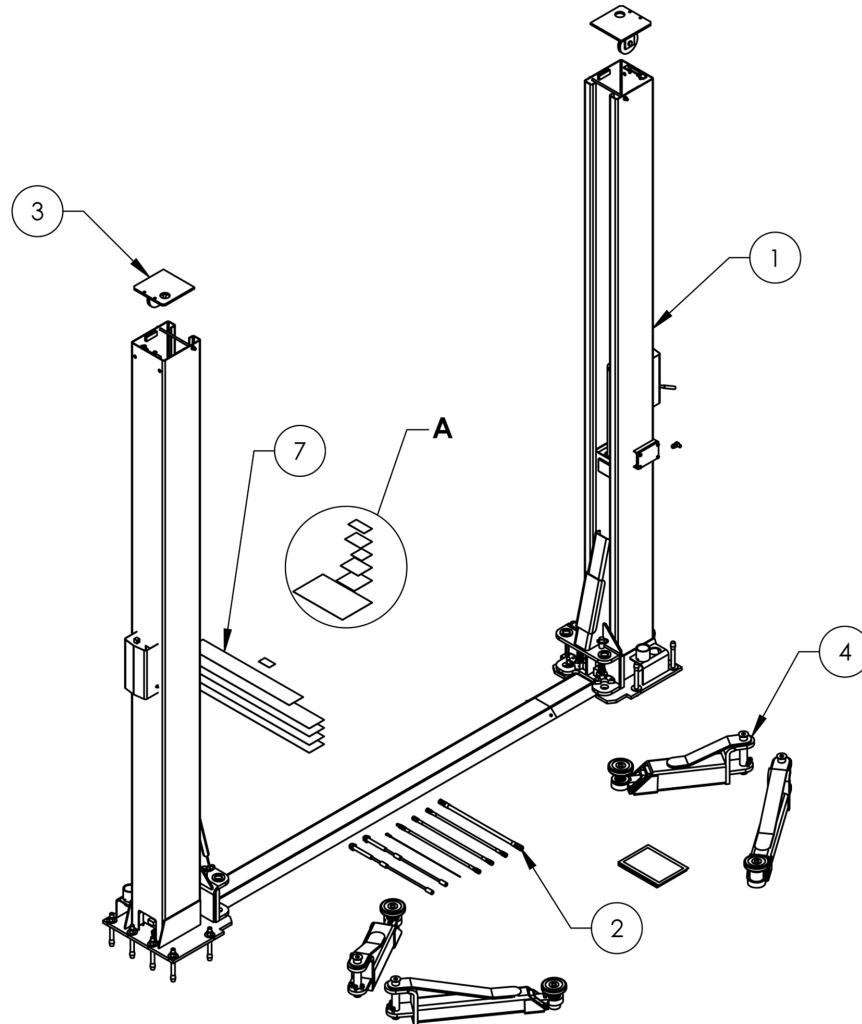
CATEGORY  
**Two Post Lift**

REV  
**Version G**

DATE  
**12.09.2022**

**BendPak.**

This guide is a troubleshooting reference used for maintaining and servicing your Bend Pak product. It provides comprehensive information on identifying serviceable parts and components and assists in troubleshooting problems and performing assembly /disassembly procedures.



**BendPak, Inc. Corporate Office**  
1645 Lemonwood Drive  
Santa Paula, CA 93060 USA  
Toll Free US/Canada: 1-800-253-2363  
Fax: 1-805-933-9160  
info@bendpak.com

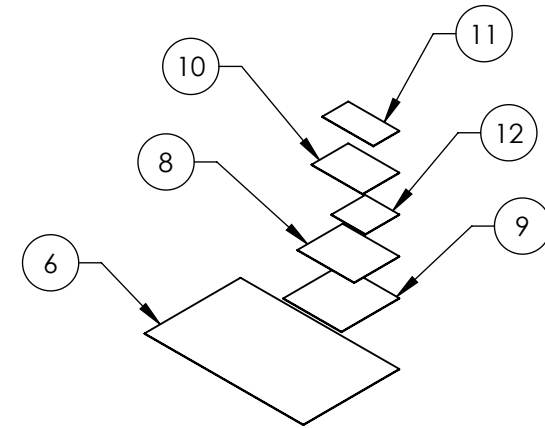
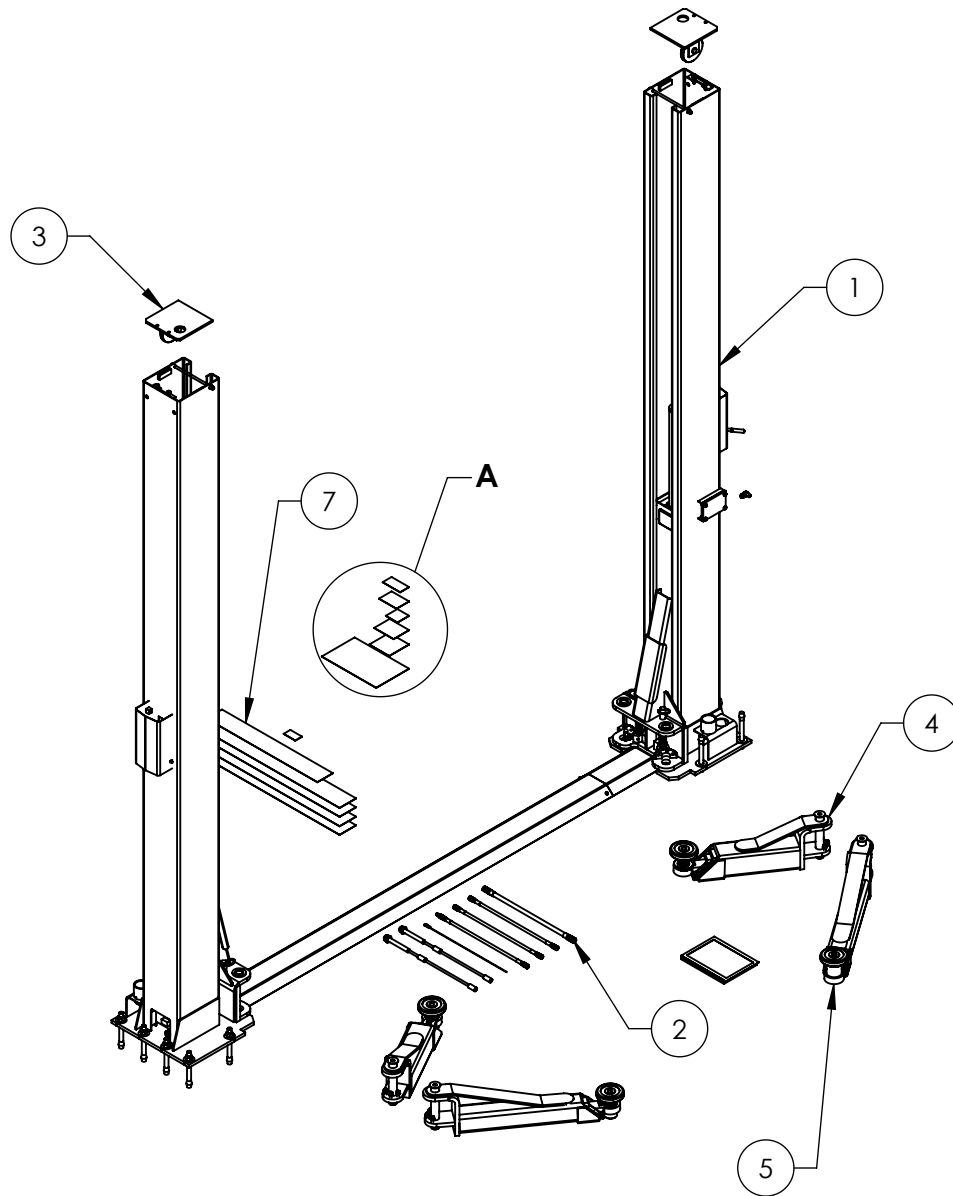
**Customer Service Desk / Warranty**  
Customer Service Representatives  
Office Tel: 1-805-933-9970  
Toll Free US/Canada: 1-800-253-2363  
Fax: 1-805-933-9160  
customerservice@bendpak.com

**Parts Orders**  
Customer Service Representatives  
Office Tel: 1-805-933-9970  
Toll Free US/Canada: 1-800-253-2363  
Fax: 1-805-933-9160  
parts@bendpak.com

**Domestic Sales & Service**  
USA Sales Representatives  
Office Tel: 1-805-933-9970  
Toll Free US/Canada: 1-800-253-2363  
Fax: 1-805-933-9160  
sales@bendpak.com



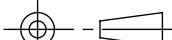
**International Sales & Service**  
Office Tel: 1-805-933-9970  
Exports Dept: 1-805-933-9970 EXT. 192  
Ext. Toll Free US/Canada: 1-800-253-2363  
Fax: 1-805-933-9160  
bpkexports@bendpak.com

REVISION				
REV	DESCRIPTION	DATE	EDITED BY	ECO#
E	UPDATED BOM REVISION	09/21/2016	DB	00780
F	UPDATED BOM REVISIONS	04/03/2017	TS	00819
G	UPDATED LIFT PAD HEIGHTS ON SHEET 2, UPDATED BOM REVISIONS	07/11/2017	TS	00850



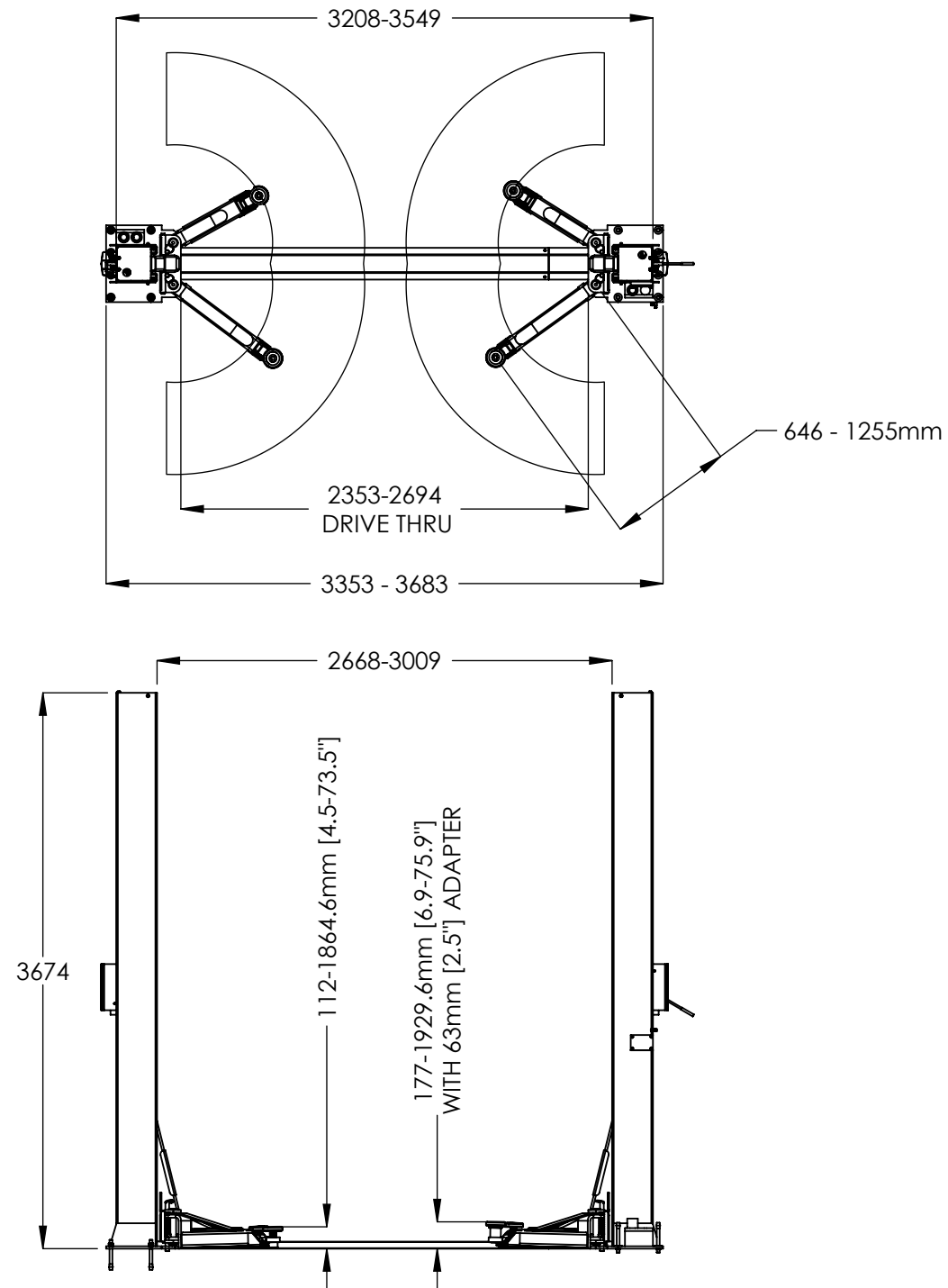
**DETAIL A  
SCALE 1 : 12**

ITEM NO	PART NUMBER	DESCRIPTION	QTY	REV
1	5245226	XPR-9DS LIFT SUPERSTRUCTURE	1	P
2	5250038	XPR-9DS PARTS BOX	1	F
3	5215226	XPR-9/9D TOP EQUALIZER PULLEY PLATE ASSEMBLY	2	J
4	5215287	XPR-9S/9DS/10S LOW PROFILE TRIPLE TELESCOPING ARM ASSEMBLY	2	F
5	5215700	XPR-9S/9DS/10S LOW PROFILE MEDIUM ARM ASSEMBLY	2	E
6	5905109	WARNING ALI/WL 101	1	--
7	5905131	2 POST DECAL KIT, LESS ALI	1	C
8	5905402	MAX CAP DANGER 9K	1	--
9	5905465	MANUFACTURER LABEL	1	--
10	5905650	MAX CAP NRTL DANGER 9K	1	--
11	5905940	PRODUCT DATA LABEL	1	--
12	5905950	5905950-2017 SERIAL TAG-A	1	--

DO NOT SCALE DRAWING		NAME	DATE			
DIMENSIONS ARE IN MM 		DRAWN	JM	12/15/2015	1645 LEMONWOOD DR. SANTA PAULA, CA 93060	
		CHECKED	AW	8/10/2017		
		THIRD ANGLE PROJECTION 				TITLE: XPR-9DS PRODUCTION LIFT VER E
<p>PROPRIETARY AND CONFIDENTIAL</p> <p>THE INFORMATION CONTAINED IN THIS DRAWING IS THE SOLE PROPERTY OF <b>BENDPAK INC.</b> ANY REPRODUCTION IN PART OR AS A WHOLE WITHOUT THE WRITTEN PERMISSION OF <b>BENDPAK INC.</b> IS PROHIBITED.</p>				SIZE	DWG. NO.	REV
				<b>A</b>	5260555	G
					SCALE: 1:35	

**NOTE: UNLESS OTHERWISE SPECIFIED.**

1. SEE SHIPPING INSTRUCTIONS FOR FINAL PACKAGING
2. ALL LABELS TO BE APPLIED TO POSTS AFTER PAINTING.  
SEE ATTACHED LABEL PLACEMENT SHEET.



**BP BendPak.**

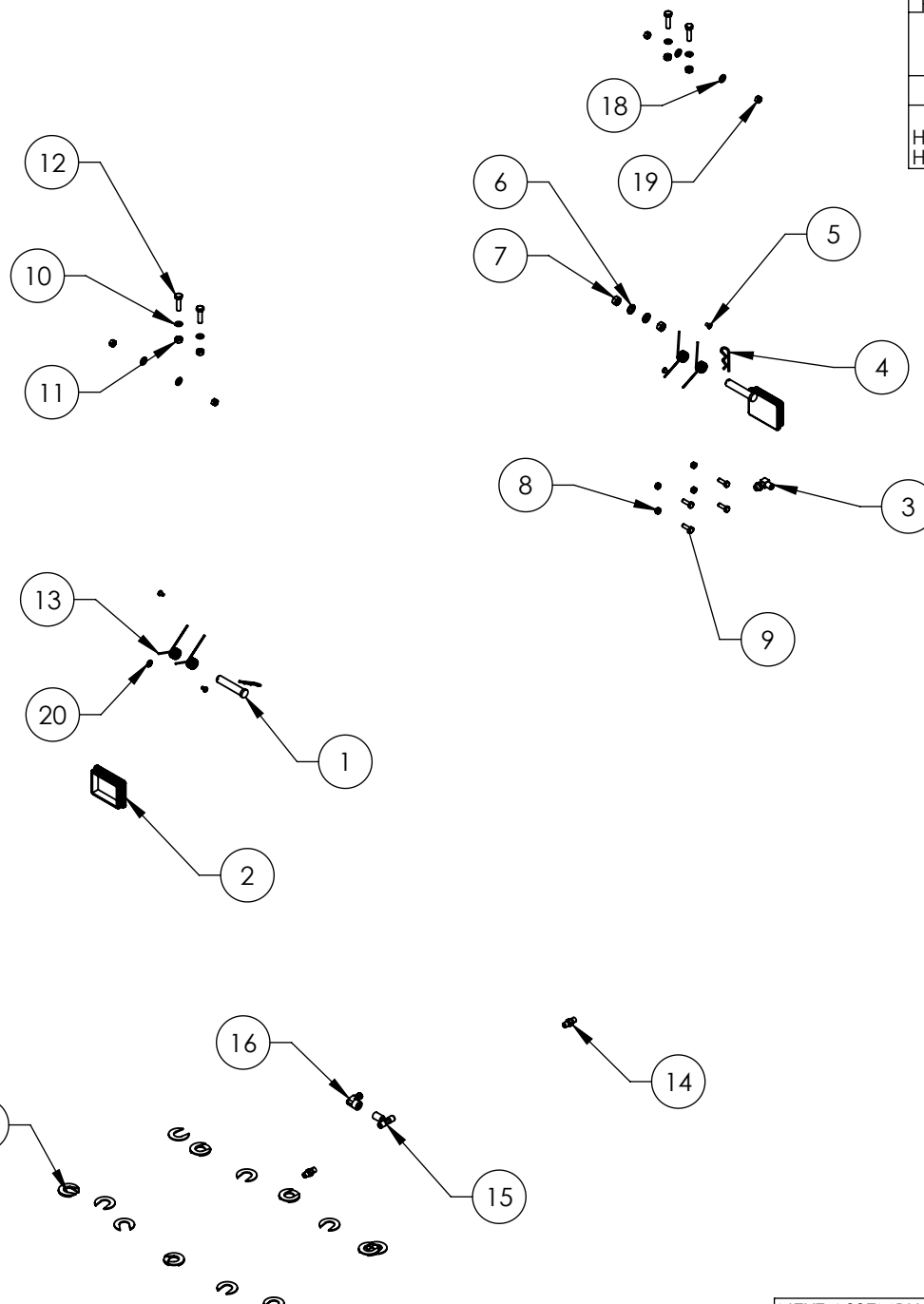
1645 LEMONWOOD DR.  
SANTA PAULA, CA 93060

TITLE:  
XPR-9DS PRODUCTION  
LIFT VER E

SIZE	DWG. NO.	REV
A	5260555	G

SCALE: 1:45

SHEET 2 OF 2



REVISION				
REV	DESCRIPTION	DATE	EDITED BY	ECO#
F	ADDED (2) 5540075, REPLACED 5530314 WITH 5530261, REPLACED 5540001 WITH 5540075, UPDATED BOM REVISION AND NEXT ASSEMBLIES	06/17/2013	TM	00605
G	UPDATED BOM REVISION	05/29/2014	TM	00649
H	REPLACED 5505113 WITH 5505001	10/06/2014	TM	00663
H-001	UPDATED NEXT ASSEMBLIES	12/17/2015	TM	00738
H-002	UPDATED NEXT ASSEMBLY	07/05/2017	TM	00849

ITEM NO	PART NUMBER	DESCRIPTION	QTY	REV
1	5505001	GP-7/XPR SERIES SAFETY CLEVIS PIN	2	B
2	5715196	XPR PLASTIC COVER BLOCK 105 x 80	2	C
3	5550183	FTG ELB -06 JIC -06L ORB	1	-
4	5505350	MODEL#211 HAIR PIN/ LARGE	2	-
5	5530261	PHPS M6 x 1 x 10	4	-
6	5545347	WASHER, M12 FLAT WASHER	2	-
7	5535354	NUT M12 x 1.75	2	-
8	5535001	NUT M8 x 1.25 NL	4	-
9	5530010	HHB M8 x 1.25 x 25	4	-
10	5545200	WASHER M10 x Ø18 SL	4	-
11	5535998	NUT M10 x 1.5	4	-
12	5530760	HEX HEAD BOLT M10x1.25x35	4	-
13	5540075	2.5 WIRE DIA., Ø20.5 x 75 LG	4	-
14	5550147	FTG NPL -04 JIC x -04 NPT	2	-
15	5550178	FTG TEE -04JIC -04JIC -06NPT	1	-
16	5550109	FTG ELB -06 JIC x -06 F NPT	1	-
17	5545535	C WASHER SHIM FOR LIFTS	20	-
18	5545341	WASHER M10 x Ø20 FLAT	4	-
19	5535013	NUT M10 x 1.5 NL	4	-
20	5505031	ROTOR CLIP 12mm SS	1	-

**NOTE: UNLESS OTHERWISE SPECIFIED.**  
1. SEE SHIPPING INSTRUCTIONS FOR FINAL PACKAGING

NEXT ASSEMBLY
5250042
5250038
5250066

DO NOT SCALE DRAWING

DIMENSIONS ARE IN MM

NAME

DATE

TM 02/10/2010

AW 7/28/2017

THIRD ANGLE PROJECTION

PROPRIETARY AND CONFIDENTIAL  
THE INFORMATION CONTAINED IN THIS DRAWING IS THE SOLE PROPERTY OF BENDPAK INC. ANY REPRODUCTION IN PART OR AS A WHOLE WITHOUT THE WRITTEN PERMISSION OF BENDPAK INC. IS PROHIBITED.

1645 LEMONWOOD DR.  
SANTA PAULA, CA 93060

TITLE:  
XPR-9D/12FD PARTS BAG

SCALE: 1:18

SIZE

DWG. NO.

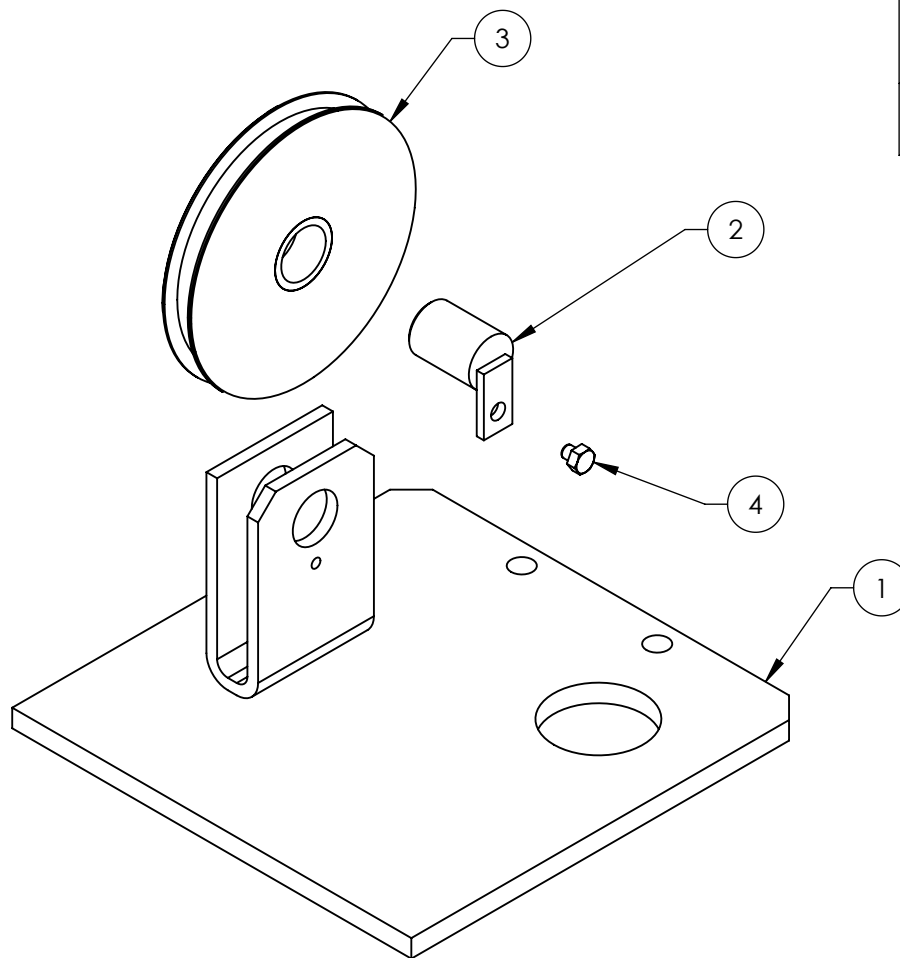
REV

A

5174114



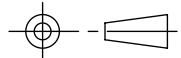
H

SHEET 1 OF 1



REVISION				
REV	DESCRIPTION	DATE	EDITED BY	ECO#
G	UPDATED TITLE TO REFLECT WHERE USED, UPDATED BOM REVISIONS, UPDATED NEXT ASSEMBLIES	02/13/2012	TM	00490
H	UPDATED BOM REVISION	05/21/2012	TM	00517
H-001	UPDATED NEXT ASSEMBLIES	07/03/2013	TM	00605
H-002	UPDATED NEXT ASSEMBLIES	08/19/2013	TM	00615
H-003	UPDATED NEXT ASSEMBLIES	07/17/2014	TM	00661
J	UPDATED TITLE TO REFLECT MARKETING, UPDATED BOM REVISIONS AND NEXT ASSEMBLIES	11/23/2015	TM	00738

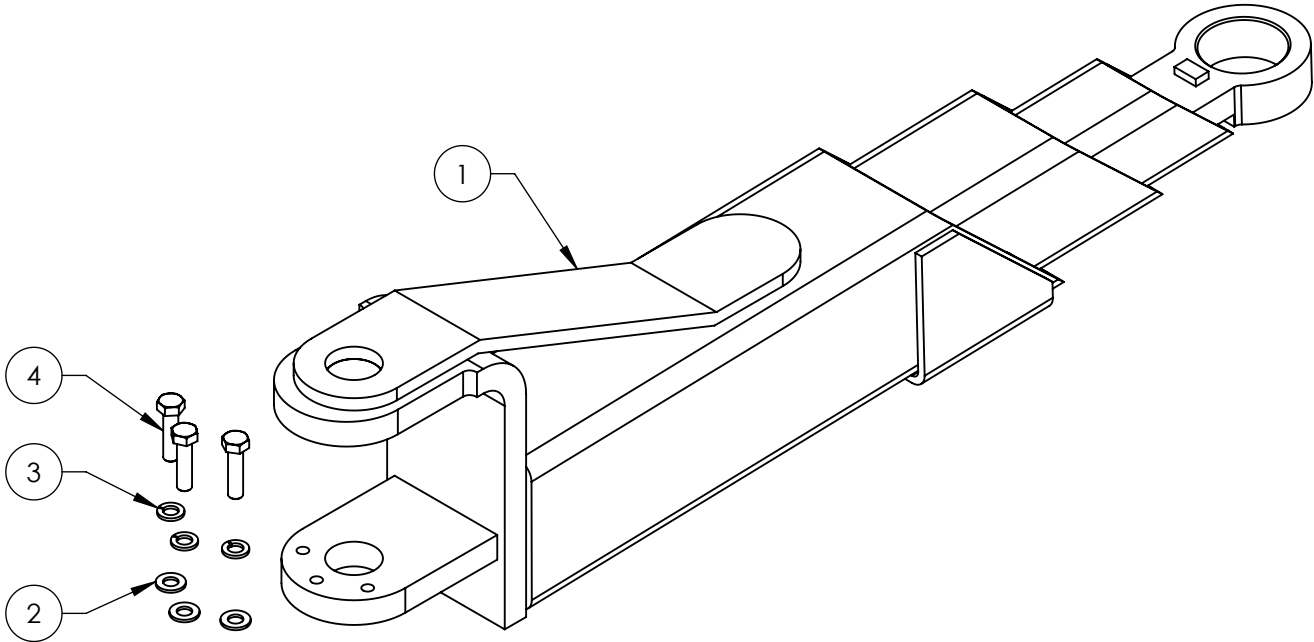
ITEM NO	PART NUMBER	DESCRIPTION	QTY	REV
1	5210154	XPR-9/9D TOP EQUALIZER PULLEY PLATE WELDMENT	1	G
2	5620141	XPR-9/10 CABLE SHEAVE PIN WELDMENT	1	F
3	5575111	XPR-9S/10 SHEAVE ASSEMBLY	1	F
4	5530030	HHB M6 x 1 x 8	1	-

DO NOT SCALE DRAWING		NAME	DATE	 1645 LEMONWOOD DR. SANTA PAULA, CA 93060	
DRAWN		TM	02/26/2010		
CHECKED		CA	02/19/2016		
DIMENSIONS ARE IN MM		THIRD ANGLE PROJECTION		TITLE: XPR-9/9D TOP EQUALIZER PULLEY PLATE ASSEMBLY	
				SIZE DWG. NO.	REV
				A 5215226	J
				SCALE: 1:3	
NEXT ASSEMBLY 5260553 5260554 5260558 5260555 5260557		PROPRIETARY AND CONFIDENTIAL THE INFORMATION CONTAINED IN THIS DRAWING IS THE SOLE PROPERTY OF BENDPAK INC. ANY REPRODUCTION IN PART OR AS A WHOLE WITHOUT THE WRITTEN PERMISSION OF BENDPAK INC. IS PROHIBITED.		SHEET 1 OF 1	



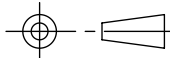
**NOTE: UNLESS OTHERWISE SPECIFIED.**

1. SEE SHIPPING INSTRUCTIONS FOR FINAL PACKAGING
2. ASSEMBLE ITEMS AS SHOWN

REVISION				
REV	DESCRIPTION	DATE	EDITED BY	ECO#
D	UPDATED BOM REVISION	03/22/2016	TM	00750
E	UPDATED BOM REVISIONS	07/11/2017	TS	00850
F	UPDATED BOM REVISION	09/01/2017	TM	00877



ITEM NO	PART NUMBER	DESCRIPTION	QTY	REV
1	5600997	XPR-9/9D/10 LOW PROFILE TRIPLE TELESCOPING ARM WELDMENT	1	E
2	5545341	WASHER M10 x Ø20 FLAT	3	-
3	5545200	WASHER M10 x Ø18 SL	3	-
4	5530302	HHB M10 x 1.5 x 40 FULLY THREAD	3	-

DO NOT SCALE DRAWING		NAME	DATE	<div></div> <div>1645 LEMONWOOD DR. SANTA PAULA, CA 93060</div>		
DIMENSIONS ARE IN MM		DRAWN	JM	06/23/2015	<div>TITLE: XPR-9S/9DS/10S LOW PROFILE TRIPLE TELESCOPING ARM ASSEMBLY</div> <div>SIZE DWG. NO. 5215287</div> <div>SCALE: 1:5</div>	
		CHECKED	AW	9/11/2017		
<div></div>		THIRD ANGLE PROJECTION				<div>REV F</div>
		<div></div>				
		PROPRIETARY AND CONFIDENTIAL THE INFORMATION CONTAINED IN THIS DRAWING IS THE SOLE PROPERTY OF <b>BENDPAK INC.</b> ANY REPRODUCTION IN PART OR AS A WHOLE WITHOUT THE WRITTEN PERMISSION OF <b>BENDPAK INC.</b> IS PROHIBITED.			SHEET 1 OF 1	

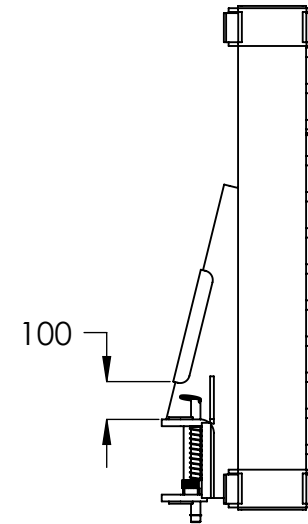
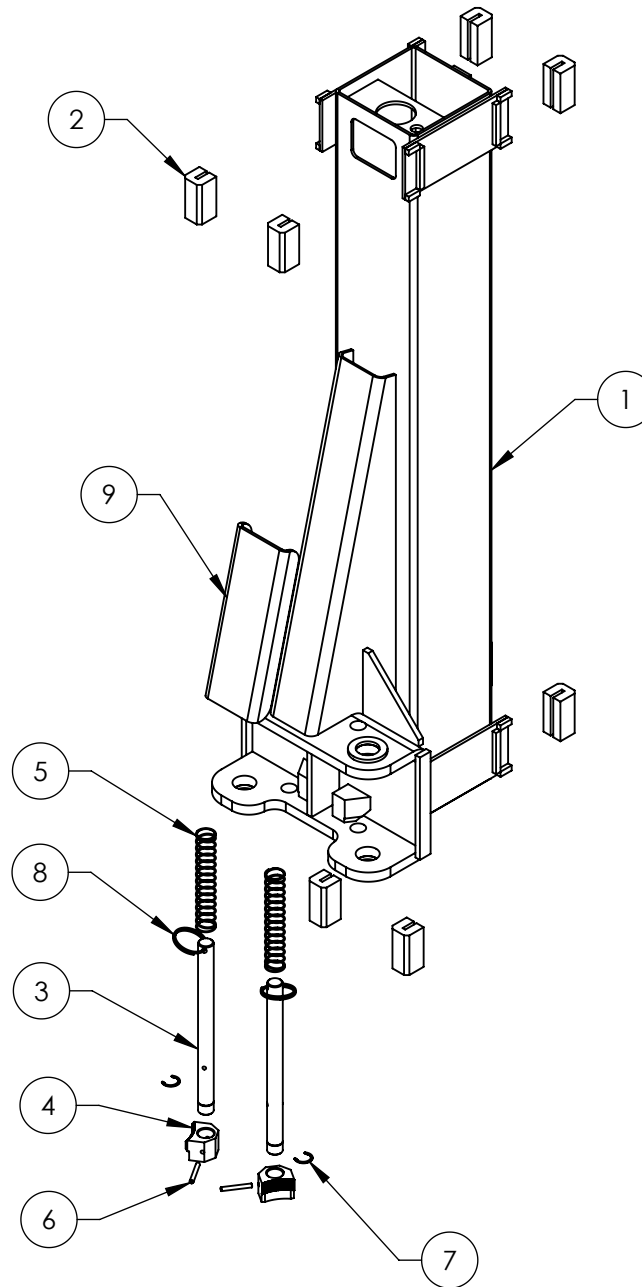
NEXT ASSEMBLY
5260553
5260554
5260555
5260558
5260572
5260574
5260575

**NOTE: UNLESS OTHERWISE SPECIFIED.**



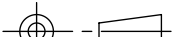
1. SEE SHIPPING INSTRUCTIONS FOR FINAL PACKAGING

2. ASSEMBLE ITEMS AS SHOWN

REVISION				
REV	DESCRIPTION	DATE	EDITED BY	ECO#
J	UPDATED BOM REVISION	05/14/2015	TM	00689
K	UPDATED BOM REVISIONS	11/12/2015	TM	00738
L	UPDATED BOM REVISION	04/14/2017	TS	00819



ITEM NO	PART NUMBER	DESCRIPTION	QTY	REV
1	5600502	XPR-9D LIFT HEAD WELDMENT	1	J
2	5716001	PL-6000/7000, GP/XPR SERIES GUIDE BLOCK	8	F
3	5746098	GP/RTL, XPR-9/10 Ø25mm GEAR SHAFT	2	E
4	5701052	GP/RTL/XPR ARM INTERNAL GEAR STOP	2	E
5	5540133	GP-7, RTL-8000, XPR-9/10 LIFT HEAD SPRING	2	C
6	5505106	SPRING PIN M6 x 50	2	-
7	5540006	SNAP RING TRUARC 5103-100	2	-
8	5580219	KEYRING 56mm x 3mm	2	-
9	5930183	XPR-9/10 LIFT HEAD GUSSET COVER	1	E

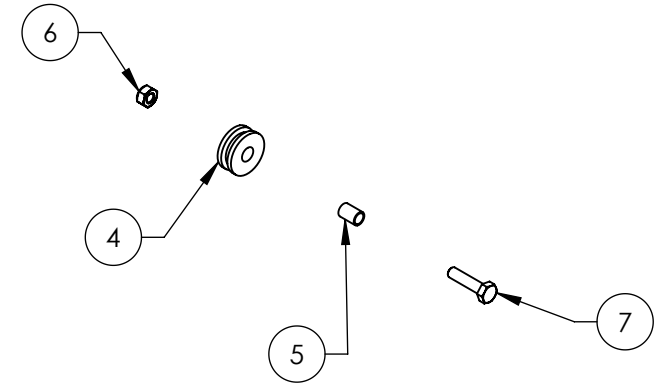
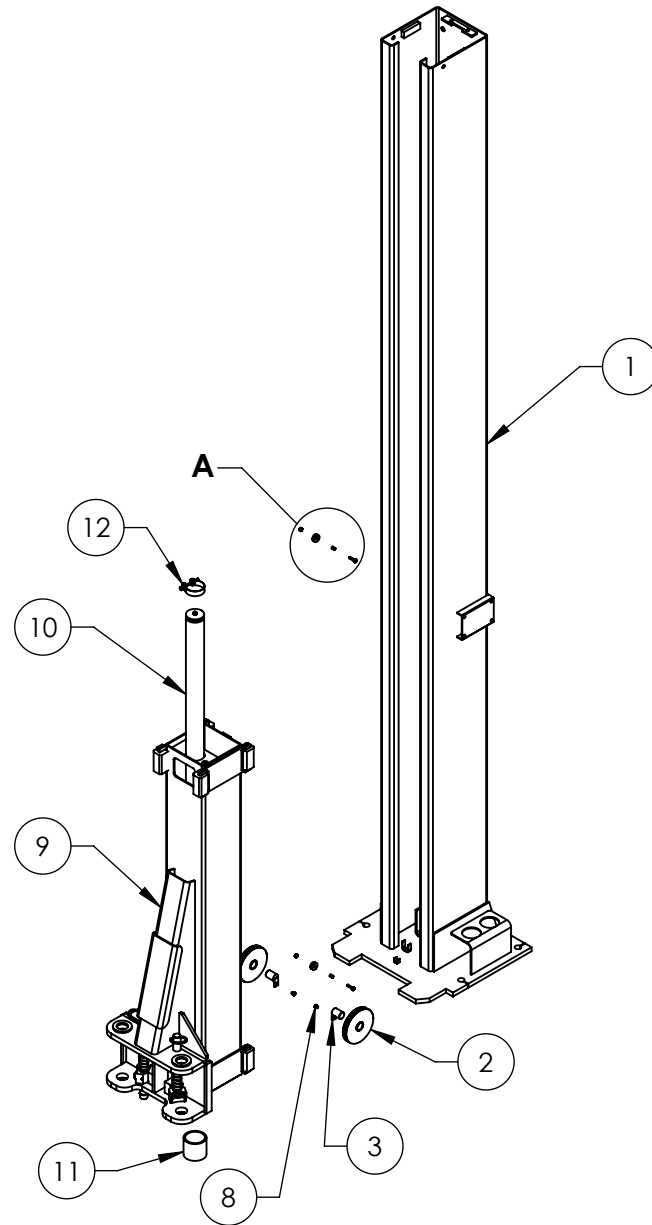
DO NOT SCALE DRAWING		NAME	DATE		
DIMENSIONS ARE IN MM 		DRAWN	TM	08/30/2010	1645 LEMONWOOD DR. SANTA PAULA, CA 93060
		CHECKED	DB	4/28/2017	
		THIRD ANGLE PROJECTION 			
Y	PROPRIETARY AND CONFIDENTIAL THE INFORMATION CONTAINED IN THIS DRAWING IS THE SOLE PROPERTY OF <b>BENDPAK INC.</b> ANY REPRODUCTION IN PART OR AS A WHOLE WITHOUT THE WRITTEN PERMISSION OF <b>BENDPAK INC.</b> IS PROHIBITED.			SIZE DWG. NO.	REV
				A 5215390	L
				SCALE: 1:12	SHEET 1 OF 1

**NOTE: UNLESS OTHERWISE SPECIFIED.**

1. SEE SHIPPING INSTRUCTIONS FOR FINAL PACKAGING
2. ASSEMBLE ITEMS AS SHOWN

NEXT ASSEMBLY
5215393
5215394

REVISION				
REV	DESCRIPTION	DATE	EDITED BY	ECO#
M	UPDATED BOM REVISION	05/14/2015	TM	00689
N	UPDATED TITLE TO REFLECT WHERE USED UPDATED BOM REVISIONS	11/12/2015	TM	00738
P	REPLACED 5701716 WITH 5701242. UPDATED BOM REVISION	04/03/2017	TS	00819



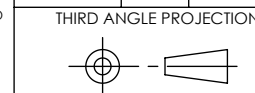
**DETAIL A**  
**SCALE 1 : 4**

ITEM NO	PART NUMBER	DESCRIPTION	QTY	REV
1	5600385	XPR-9DS POWER SIDE POST WELDMENT	1	G
2	5575111	XPR-9S/10 SHEAVE ASSEMBLY	2	F
3	5620141	XPR-9/10 CABLE SHEAVE PIN WELDMENT	2	F
4	5575112	GP/PCL/XPR/PL-7000 SAFETY SHEAVE	2	C
5	5565350	GP/PCL/XPR/PL-7000 SAFETY SHEAVE SPACER	2	C
6	5535357	NUT M6 x 1.0 NL	2	-
7	5530756	HHB M6 x 1 x 25	2	-
8	5530030	HHB M6 x 1 x 8	2	-
9	5215390	XPR-9D LIFT HEAD ASSEMBLY	1	L
10	5502300	CYLINDER ASSEMBLY Ø2.0 x 69	1	F
11	5755142	XPR-9D CYLINDER SPACER	1	D
12	5701242	CYLINDER CLAMP ASSY	1	A

DO NOT SCALE DRAWING

NAME	DATE
DRAWN	TM 08/30/2010
CHECKED	DB 4/28/2017

DIMENSIONS ARE IN MM  
TOLERANCES: MACHINE TO  
0 = ±1.5  
0.0 = ±0.5  
0.00 = ±0.13  
ANGULAR: MACHINE TO  
0 = ±1/2°  
SURFACE FINISH 1.6 Ra µm  
FOR MACHINED SURFACES  
UNLESS OTHERWISE SPECIFIED



PROPRIETARY AND CONFIDENTIAL  
THE INFORMATION CONTAINED IN THIS DRAWING IS  
THE SOLE PROPERTY OF BENDPAK INC. ANY  
REPRODUCTION IN PART OR AS A WHOLE WITHOUT  
THE WRITTEN PERMISSION OF BENDPAK INC. IS  
PROHIBITED.

**BendPak.**

1645 LEMONWOOD DR.  
SANTA PAULA, CA 93060

TITLE: XPR-9DS POWER SIDE  
POST ASSEMBLY

SIZE DWG. NO. REV  
**A** 5215393 P

SCALE: 1:25

SHEET 1 OF 1

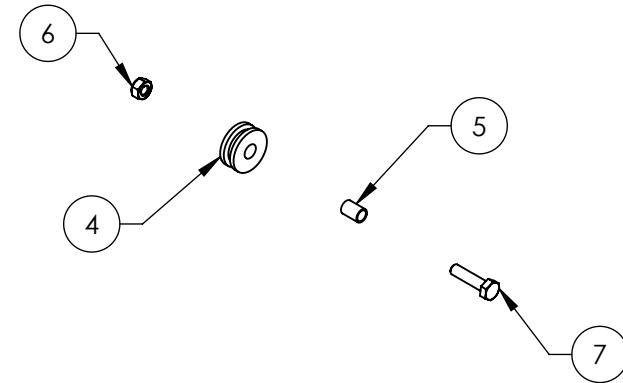
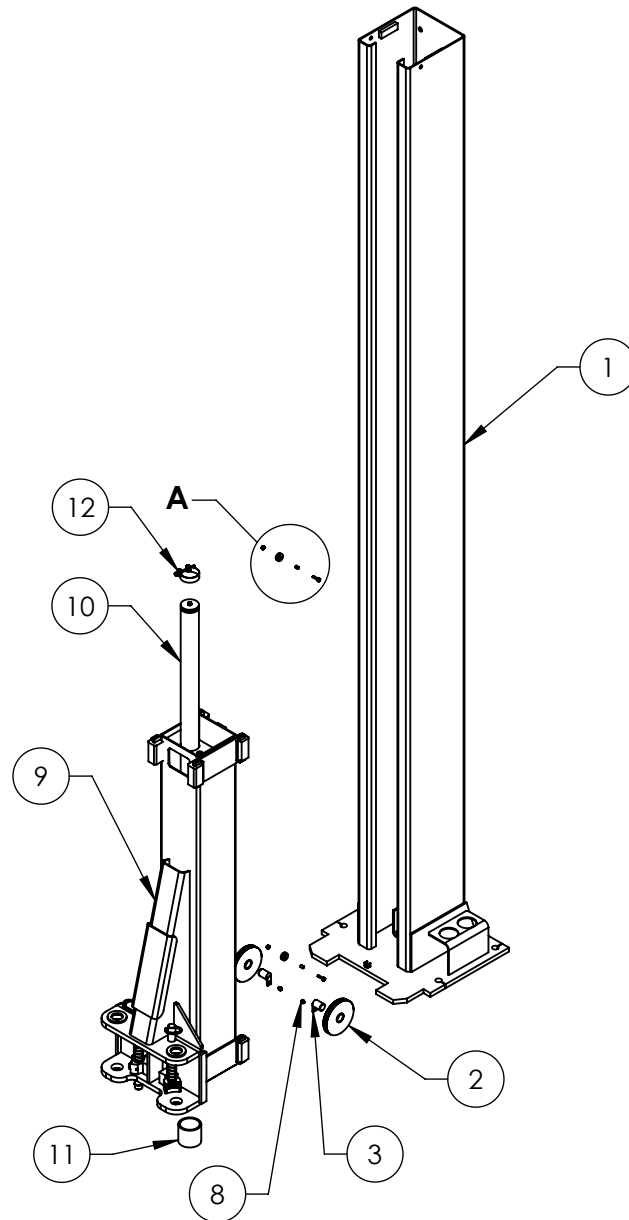
**NOTE: UNLESS OTHERWISE SPECIFIED.**

- SEE SHIPPING INSTRUCTIONS FOR FINAL PACKAGING
- ASSEMBLE ITEMS AS SHOWN

NEXT ASSEMBLY  
5245226



REVISION				
REV	DESCRIPTION	DATE	EDITED BY	ECO#
L	UPDATED BOM REVISION	05/14/2015	TM	00689
M	UPDATED TITLE TO REFLECT WHERE USED UPDATED BOM REVISIONS	11/12/2015	TM	00738
N	REPLACED 5701716 WITH 5701242, UPDATED BOM REVISION	04/03/2017	TS	00819



**DETAIL A**  
**SCALE 1 : 4**

ITEM NO	PART NUMBER	DESCRIPTION	QTY	REV
1	5600384	XPR-9DS OFF SIDE POST WELDMENT	1	F
2	5575111	XPR-9S/10 SHEAVE ASSEMBLY	2	F
3	5620141	XPR-9/10 CABLE SHEAVE PIN WELDMENT	2	F
4	5575112	GP/PCL/XPR/PL-7000 SAFETY SHEAVE	2	C
5	5565350	GP/PCL/XPR/PL-7000 SAFETY SHEAVE SPACER	2	C
6	5535357	NUT M6 x 1.0 NL	2	-
7	5530756	HHB M6 x 1 x 25	2	-
8	5530030	HHB M6 x 1 x 8	2	-
9	5215390	XPR-9D LIFT HEAD ASSEMBLY	1	L
10	5502300	CYLINDER ASSEMBLY Ø2.0 x 69	1	F
11	5755142	XPR-9D CYLINDER SPACER	1	D
12	5701242	CYLINDER CLAMP ASSY	1	A

DO NOT SCALE DRAWING

NAME	DATE
DRAWN TM	08/30/2010
CHECKED DB	4/28/2017

**BP BendPak.**

1645 LEMONWOOD DR.  
SANTA PAULA, CA 93060

DIMENSIONS ARE IN MM

THIRD ANGLE PROJECTION



PROPRIETARY AND CONFIDENTIAL  
THE INFORMATION CONTAINED IN THIS DRAWING IS  
THE SOLE PROPERTY OF BENDPAK INC. ANY  
REPRODUCTION IN PART OR AS A WHOLE WITHOUT  
THE WRITTEN PERMISSION OF BENDPAK INC. IS  
PROHIBITED.

TITLE: XPR-9DS OFF SIDE POST  
ASSEMBLY

SIZE DWG. NO. REV  
**A** 5215394 N

SCALE: 1:25

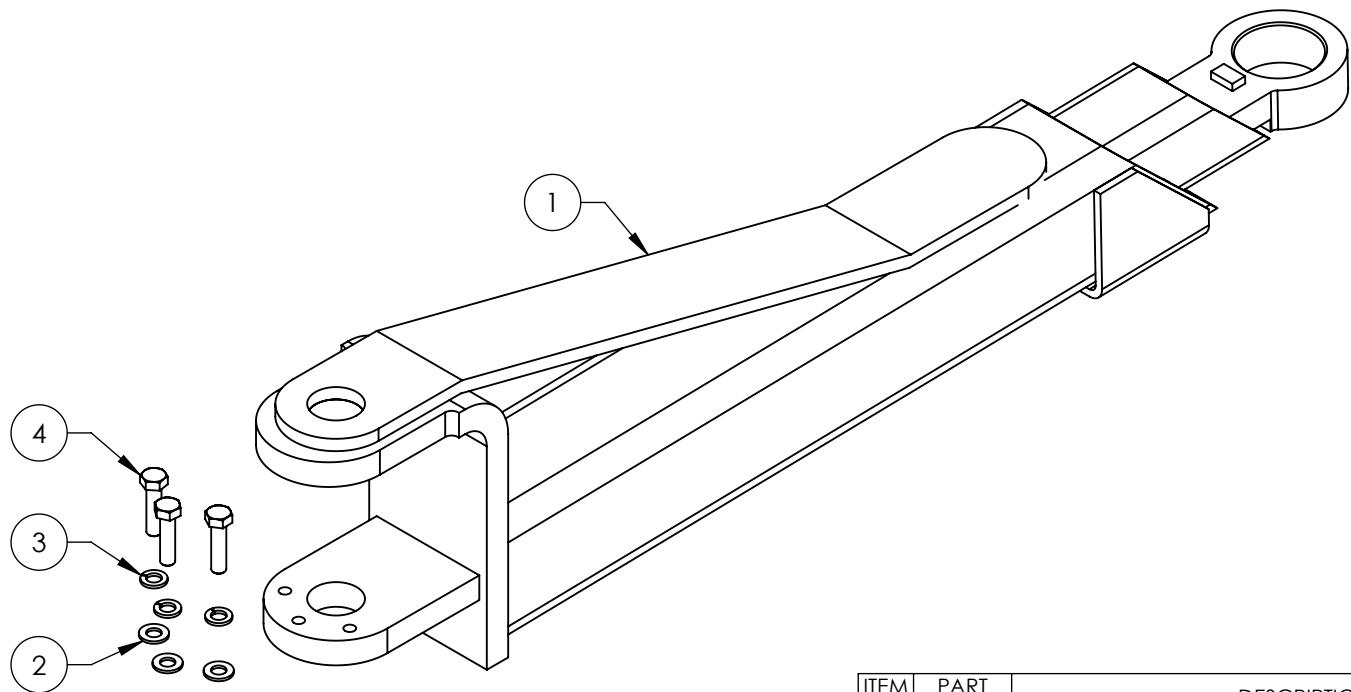
SHEET 1 OF 1

**NOTE: UNLESS OTHERWISE SPECIFIED.**


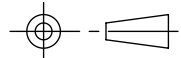
- SEE SHIPPING INSTRUCTIONS FOR FINAL PACKAGING
- ASSEMBLE ITEMS AS SHOWN

NEXT ASSEMBLY  
5245226

REVISION				
REV	DESCRIPTION	DATE	EDITED BY	ECO#
C	UPDATED TITLE TO REFLECT WHERE USED, UPDATED NEXT ASSEMBLY	12/17/2015	JM	00738
D	UPDATED BOM REVISION	03/22/2016	TM	00750
E	UPDATED BOM REVISIONS	07/11/2017	TS	00850



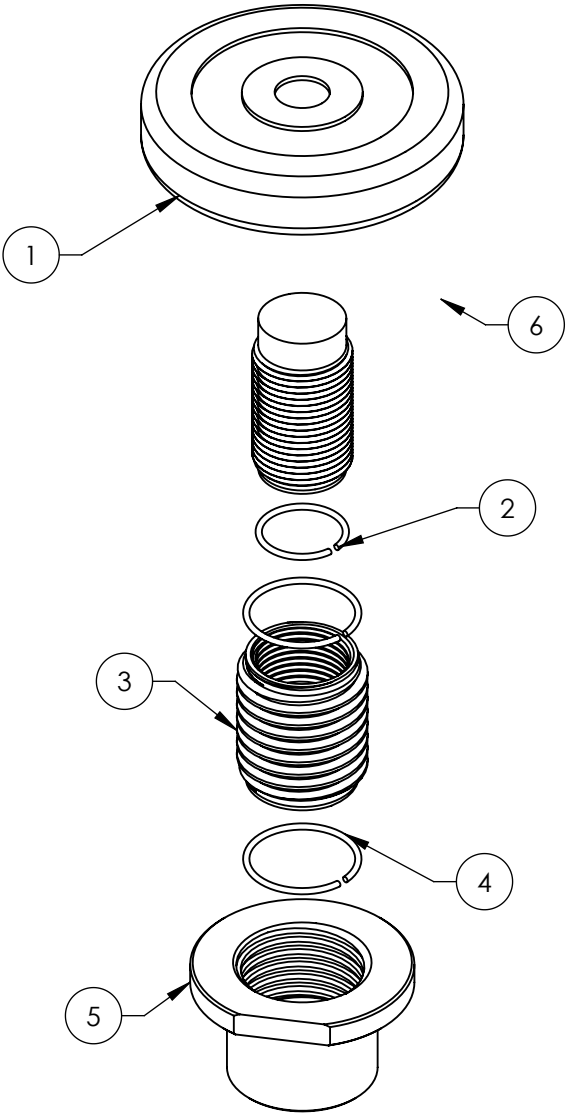
ITEM NO	PART NUMBER	DESCRIPTION	QTY	REV
1	5600998	XPR-9S/9DS/10S LOW PROFILE MEDIUM ARM WELDMENT	1	D
2	5545341	WASHER M10 x Ø20 FLAT	3	-
3	5545200	WASHER M10 x Ø18 SL	3	-
4	5530302	HHB M10 x 1.5 x 40 FULLY THREAD	3	-

DO NOT SCALE DRAWING		NAME	DATE	<b>BP BendPak.</b> 1645 LEMONWOOD DR. SANTA PAULA, CA 93060	
DRAWN		JM	06/23/2015		
CHECKED		AW	8/10/2017		
DIMENSIONS ARE IN MM		THIRD ANGLE PROJECTION		TITLE: XPR-9S/9DS/10S LOW PROFILE MEDIUM ARM ASSEMBLY	
				SIZE DWG. NO.	REV
				<b>A</b> 5215700	E
				SCALE: 1:5	
NEXT ASSEMBLY 5260555 5260558 5260574 5260575		<small>PROPRIETARY AND CONFIDENTIAL  THE INFORMATION CONTAINED IN THIS DRAWING IS  THE SOLE PROPERTY OF BENDPAK INC. ANY  REPRODUCTION IN PART OR AS A WHOLE WITHOUT  THE WRITTEN PERMISSION OF BENDPAK INC. IS  PROHIBITED.</small>		SHEET 1 OF 1	

**NOTE: UNLESS OTHERWISE SPECIFIED.**

- SEE SHIPPING INSTRUCTIONS FOR FINAL PACKAGING
- ASSEMBLE ITEMS AS SHOWN

REVISION				
REV	DESCRIPTION	DATE	EDITED BY	ECO#
D	UPDATED BOM REVISIONS	8/10/2016	TM	00771
E	UPDATED BOM REVISIONS	08/25/2016	TM	00777
F	UPDATED BOM REVISION	09/21/2016	DB	00780



ITEM NO.	PART NUMBER	DESCRIPTION	QTY	REV
1	5715017	ROUND LIFT PAD ADAPTER RUBBER PAD	1	D
2	5540025	S RING Ø35mm	1	--
3	5746692	INNER SCREW	1	C
4	5540026	S RING Ø45mm	2	--
5	5746693	ROUND LIFT PAD SCREW ADAPTOR	1	D
6	5601001	ROUND LIFT PAD ADAPTOR WELDMENT	1	C

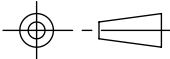
DO NOT SCALE DRAWING

NAME DATE

DRAWN CHY 06/14/2015

CHECKED DB 09/27/2016

THIRD ANGLE PROJECTION



PROPRIETARY AND CONFIDENTIAL  
THE INFORMATION CONTAINED IN THIS DRAWING IS  
THE SOLE PROPERTY OF BENDPAK INC. ANY  
REPRODUCTION IN PART OR AS A WHOLE WITHOUT  
THE WRITTEN PERMISSION OF BENDPAK INC. IS  
PROHIBITED.

**BendPak.** 1645 LEMONWOOD DR.  
SANTA PAULA, CA 93060

TITLE: ROUND ADJUSTABLE  
LIFT PAD ASSEMBLY

SIZE DWG. NO.

**A** 5215704

REV

F

SCALE: 1:3

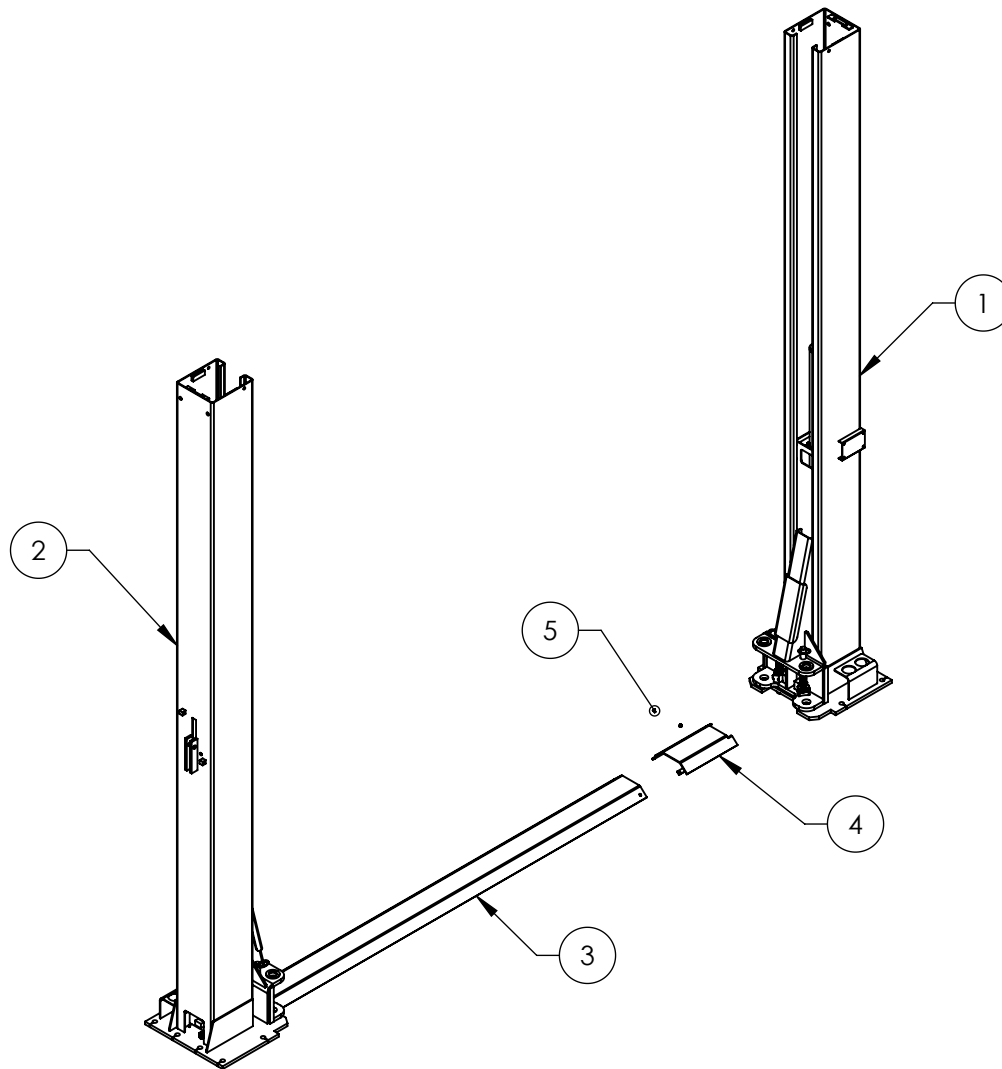
SHEET 1 OF 1

NEXT ASSEMBLY
5250036
5250037
5250038
5250039
5250040
5250048
5250049



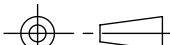
**NOTE: UNLESS OTHERWISE SPECIFIED.**

1. ASSEMBLE ITEMS AS SHOWN

REVISION				
REV	DESCRIPTION	DATE	EDITED BY	ECO#
M	UPDATED BOM REVISIONS	05/14/2015	TM	00689
N	UPDATED TITLE TO REFLECT WHERE USED UPDATED NEXT ASSEMBLY AND BOM REVISIONS	12/09/2015	TM	00738
P	UPDATED BOM REVISIONS	04/03/2017	TS	00819



ITEM NO	PART NUMBER	DESCRIPTION	QTY	REV
1	5215393	XPR-9DS POWER SIDE POST ASSEMBLY	1	P
2	5215394	XPR-9DS OFF SIDE POST ASSEMBLY	1	N
3	5210152	XPR-9D GROUND PLATE	1	E
4	5600509	XPR-9D FLOORPLATE EXTENSION WELDMENT	1	B
5	5530079	BPHS M6 x1.0x10	2	-

DO NOT SCALE DRAWING		NAME	DATE	<div> <b>BendPak.</b> 1645 LEMONWOOD DR. SANTA PAULA, CA 93060</div>	
DRAWN		TM	08/31/2010		
CHECKED		DB	4/28/2017		
DIMENSIONS ARE IN MM  		THIRD ANGLE PROJECTION		TITLE: XPR-9DS LIFT SUPERSTRUCTURE	
				SIZE DWG. NO. 5245226	
		<p><b>PROPRIETARY AND CONFIDENTIAL</b> THE INFORMATION CONTAINED IN THIS DRAWING IS THE SOLE PROPERTY OF <b>BENDPAK INC.</b> ANY REPRODUCTION IN PART OR AS A WHOLE WITHOUT THE WRITTEN PERMISSION OF <b>BENDPAK INC.</b> IS PROHIBITED.</p>		REV P	
SCALE: 1:35				SHEET 1 OF 1	

**NOTE: UNLESS OTHERWISE SPECIFIED.**

1. SEE SHIPPING INSTRUCTIONS FOR FINAL PACKAGING

NEXT ASSEMBLY
5260554
5260555
5260556





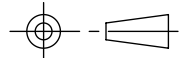
REVISION				
REV	DESCRIPTION	DATE	EDITED BY	ECO#
D	UPDATED BOM REVISION	08/25/2016	TM	00777
E	UPDATED BOM REVISION	09/21/2016	DB	00780
F	REPLACED 5530307 WITH 5530337	07/11/2017	TS	00850

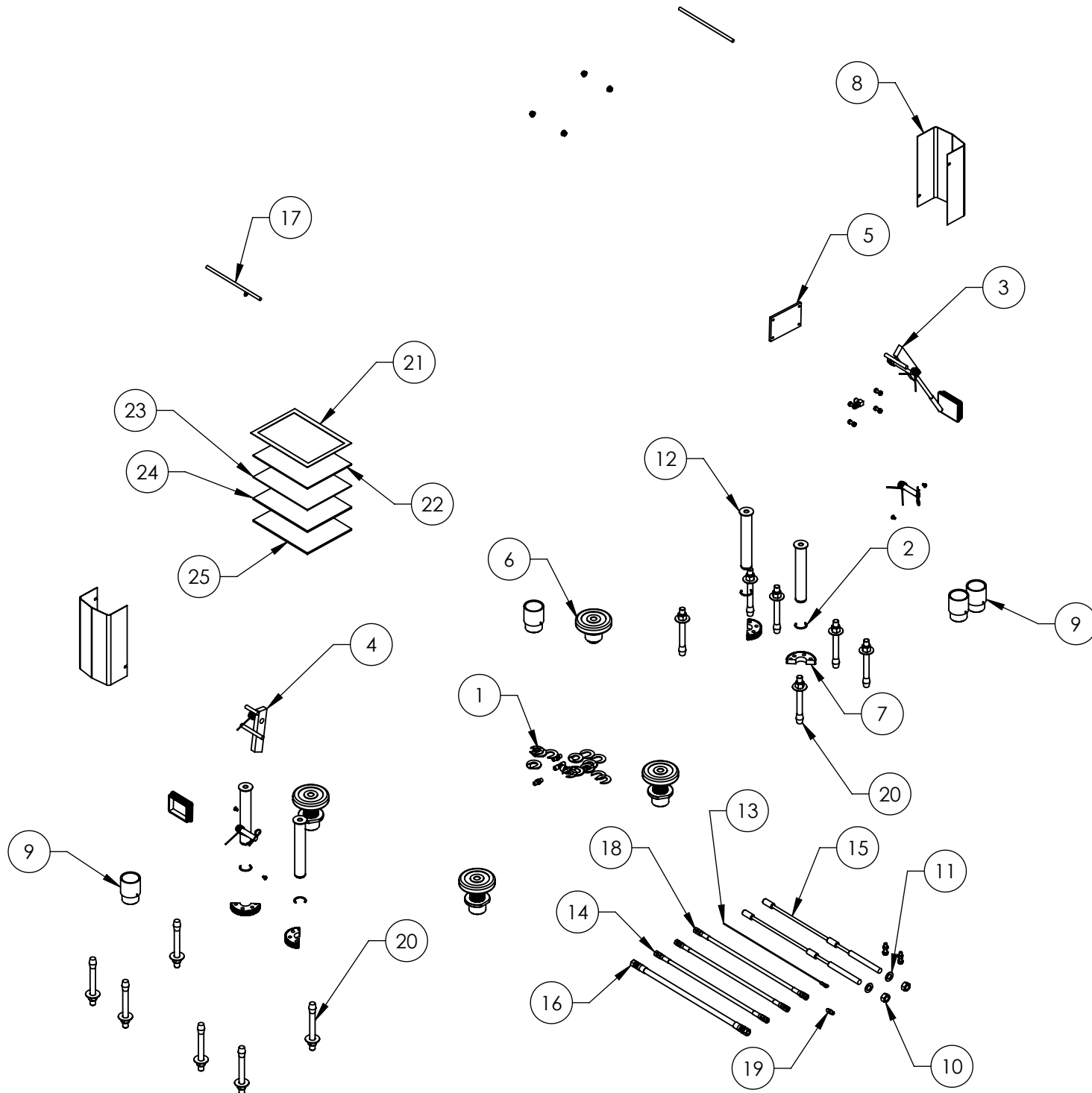
ITEM NO	PART NUMBER	DESCRIPTION	QTY	REV
1	5174114	XPR-9D/12FD PARTS BAG	1	H
2	5540281	C RING Ø38mm OD 5103-150	4	-
3	5210007	XPR POWER SIDE SAFETY ASSEMBLY	1	F
4	5210010	XPR OFF SIDE SAFETY WELDMENT	1	E
5	5715003	POWER UNIT VIBRATION DAMPENER	1	B
6	5215704	ROUND ADJUSTABLE LIFT PAD ASSEMBLY	4	F
7	5736604	TWO POST LIGHT DUTY BOLT ON ARM RESTRAINT GEAR	4	E
8	5210009	XPR-9D/10/12/12FD/15/18C OFF SIDE SAFETY COVER	2	E
9	5746192	ARM ADAPTER, MEDIUM	4	D
10	5535358	NUT M18 x 2.5 NL	2	-
11	5545342	WASHER M18 FLAT	2	-
12	5505116	XPR-9/10 LIFT HEAD PIN WELDMENT	4	D
13	5595119	XPR-9D Ø2.4 x 7544 SAFETY CABLE	1	D
14	5570119	XPR-9D HYDRAULIC HOSE ASSY Ø6.35 x 1384mm DS	2	D
15	5595364	XPR-9D CABLE ASSEMBLY Ø10 x 10450mm DBST	2	A
16	5570113	XPR-9D HYDRAULIC HOSE ASSY Ø10 x 2896mm DS	1	B
17	5746167	DOUBLE THREADED ROD M10 x 1.5 x 275	2	B
18	5570176	MDS-6K, XPR-9D/10 HYDRAULIC HOSE ASSY Ø6.35 x 330mm DS	1	E
19	5550095	FTG NPL -04 JIC x -04 JIC	1	-
20	5530337	AB 3/4" x 6.3"	12	-
21	5905151	SAFETY TIPS CARD ALI-ST 90	1	-
22	5900147	SAFETY MANUAL ALI / SM 93-1	1	-
23	5900152	ALIGN OIM OPERATION INSPECTION & MAINTENANCE	1	-
24	5900280	ALI/LP FRAME ENGAGING LIFTS GUIDE	1	-
25	5900348	XPR-9DS INSTALLATION MANUAL	1	-

**NOTE: UNLESS OTHERWISE SPECIFIED.**

1. SEE SHIPPING INSTRUCTIONS FOR FINAL PACKAGING
2. INSERT PARTS BAG INTO PARTS BOX FOR SHIPMENT
3. THREAD 5535358 WITH 5545342 ONTO CABLES FOR SHIPMENT
4. HOSES AND CABLES IN REPRESENTATIONAL FORM

NEXT ASSEMBLY
5260554
5260555

DO NOT SCALE DRAWING	NAME	DATE	 1645 LEMONWOOD DR. SANTA PAULA, CA 93060	
DIMENSIONS ARE IN MM 	DRAWN	JM	12/15/2015	
	CHECKED	AW	8/10/2017	
	THIRD ANGLE PROJECTION 			TITLE: XPR-9DS PARTS BOX
THE INFORMATION CONTAINED IN THIS DRAWING IS THE SOLE PROPERTY OF BENDPAK INC. ANY REPRODUCTION IN PART OR AS A WHOLE WITHOUT THE WRITTEN PERMISSION OF BENDPAK INC. IS PROHIBITED.			SIZE DWG. NO.	REV
			A 5250038	F
SCALE: 1:25				SHEET 1 OF 2



**BendPak** 1645 LEMONWOOD DR.  
SANTA PAULA, CA 93060

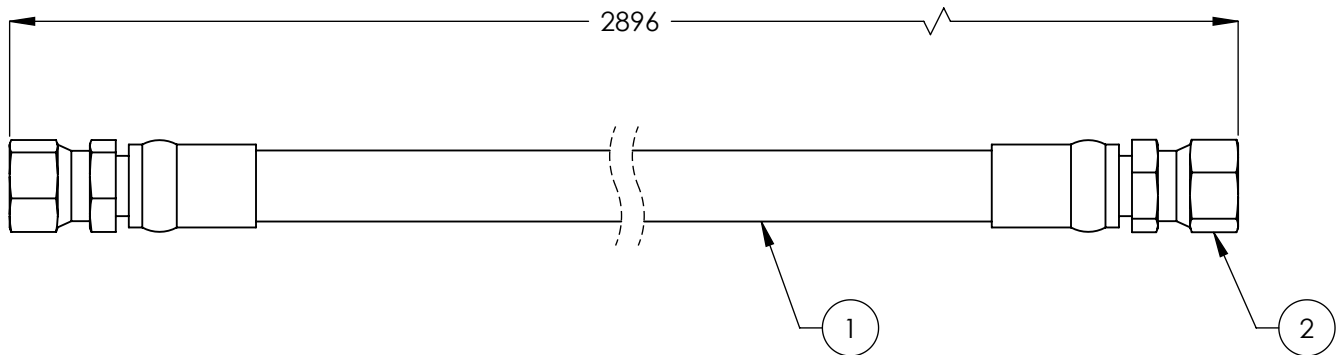
TITLE: XPR-9DS PARTS BOX

SIZE	DWG. NO.	REV
A	5250038	F


SCALE: 1:20

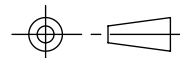
SHEET 2 OF 2

REVISION				
REV	DESCRIPTION	DATE	EDITED BY	ECO#
A	PRODUCTION RELEASE, DERIVED FROM 800692	11/18/2009	TM	00293
A-001	UPDATED NEXT ASSEMBLY	09/08/2010	TM	00396
A-002	UPDATED NEXT ASSEMBLY	04/18/2011	MT	00454
B	UPDATED TITLE TO REFLECT WHERE USED,	02/02/2012	TM	00490
B-001	UPDATED NEXT ASSEMBLY	06/20/2013	TM	00605
B-002	UPDATED NEXT ASSEMBLY	12/17/2015	TM	00738



ITEM NO	PART NUMBER	DESCRIPTION		QTY.	REV
1	5570116	Ø10 ID HYDRAULIC HOSE		2803.5mm*	--
2	5550336	FTG NPL -06 CRIMP x -06 JIC		2	--

DO NOT SCALE DRAWING		NAME	DATE	 1645 LEMONWOOD DR. SANTA PAULA, CA 93060
		DRAWN	TM 11/18/2009	
		CHECKED	CA 02/22/2016	

DIMENSIONS ARE IN MM TOLERANCES: 0. = ±1.5 0.0 = ±1.0 0.00 = ±0.25 0.000 = ±0.13  ANGULAR: MACH±2°  SURFACE FINISH 1.6 ISO Ra µm FOR MACHINED SURFACES UNLESS OTHERWISE SPECIFIED	THIRD ANGLE PROJECTION		TITLE:
			XPR-9D HYDRAULIC HOSE ASSY Ø10 x 2896mm DS
	<p>PROPRIETARY AND CONFIDENTIAL</p> <p>THE INFORMATION CONTAINED IN THIS DRAWING IS THE SOLE PROPERTY OF BENDPAK INC. ANY REPRODUCTION IN PART OR AS A WHOLE WITHOUT THE WRITTEN PERMISSION OF BENDPAK INC. IS PROHIBITED.</p>		SIZE DWG. NO. REV

<b>A</b>	5570113	<b>B</b>
	SCALE: 1:2	

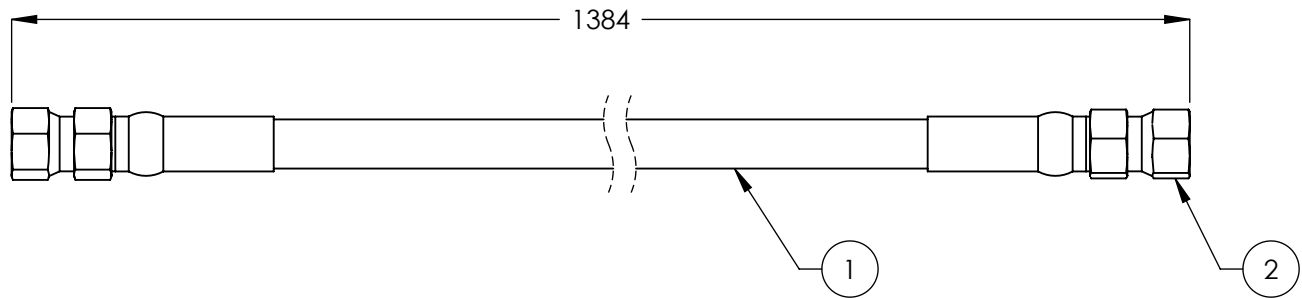
SHEET 1 OF 1
--------------

**NOTE: UNLESS OTHERWISE SPECIFIED.**


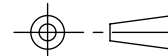
- FOR ITEM 1 SPECIFICATIONS REFER TO PART SPECIFICATION FORM
- (\*)ITEM 1 QTY FOR REFERENCE ONLY

NEXT ASSEMBLY  
5250038

REVISION				
REV	DESCRIPTION	DATE	EDITED BY	ECO#
B	UPDATED TITLE TO REFLECT WHERE USED, UPDATED NEXT ASSEMBLIES	02/02/2012	TM	00490
B-001	UPDATED NEXT ASSEMBLIES	07/05/2013	TM	00605
C	REPLACED 5570110 WITH 5570129 TO REFLECT INVENTORY, UPDATED TITLE TO REFLECT WHERE USED	11/24/2014	TM	00673
D	UPDATED TITLE TO REFLECT MARKETING, UPDATED NEXT ASSEMBLY	12/01/2015	TM	00738



ITEM NO	PART NUMBER	DESCRIPTION		QTY.	REV
1	5570129	Ø6.4 ID HYDRAULIC HOSE		1318mm*	--
2	5550325	FTG NPL Ø1/4 CRIMP x -04 JIC		2	--

DO NOT SCALE DRAWING		NAME	DATE	 1645 LEMONWOOD DR. SANTA PAULA, CA 93060
DIMENSIONS ARE IN MM TOLERANCES: 0. = ±1.5 0.0 = ±1.0 0.00 = ±0.25 0.000 = ±0.13  ANGULAR: MACH±2°  SURFACE FINISH 1.6 ISO Ra µm FOR MACHINED SURFACES UNLESS OTHERWISE SPECIFIED	DRAWN	TM	11/18/2009	
	CHECKED	CA	02/22/2016	
		THIRD ANGLE PROJECTION		TITLE: XPR-9D HYDRAULIC HOSE ASSY Ø6.35 x 1384mm DS
				SIZE DWG. NO. REV
		PROPRIETARY AND CONFIDENTIAL THE INFORMATION CONTAINED IN THIS DRAWING IS THE SOLE PROPERTY OF BENDPAK INC. ANY REPRODUCTION IN PART OR AS A WHOLE WITHOUT THE WRITTEN PERMISSION OF BENDPAK INC. IS PROHIBITED.		A 5570119 D
		SCALE: 1:2 SHEET 1 OF 1		

**NOTE: UNLESS OTHERWISE SPECIFIED.**

- FOR ITEM 1 SPECIFICATIONS REFER TO PART SPECIFICATION FORM
- (\*)ITEM 1 QTY FOR REFERENCE ONLY

NEXT ASSEMBLY  
5250038



## PART SPECIFICATION FORM

### ACP

<b>BENDPAK Number:</b>	5570129
<b>MRP Description:</b>	¼" HYDRAULIC HOSE 31 CL-0400X
<b>Date:</b>	03/07/2017
<b>ECO :</b>	00813

#### 1. Engineering Specification

**Application:**

¼" HYDRAULIC HOSE

**Detailed Description:**

ONE or TWO BRAID STEEL WIRE HYDRAULIC HOSE

SIZE: 1/4" / 6mm I.D. MIN  
 0.53" / 13.4mm O.D. MAX

SPECS: 3000PSI OR 207 BAR WORKING PRESSURE  
 12000PSI OR 827 BAR MINIMUM BURST PRESSURE  
 2" / 50mm MIN BEND RADIUS

COLOR: BLACK



**ADDITIONAL CONTACT INFORMATION:**

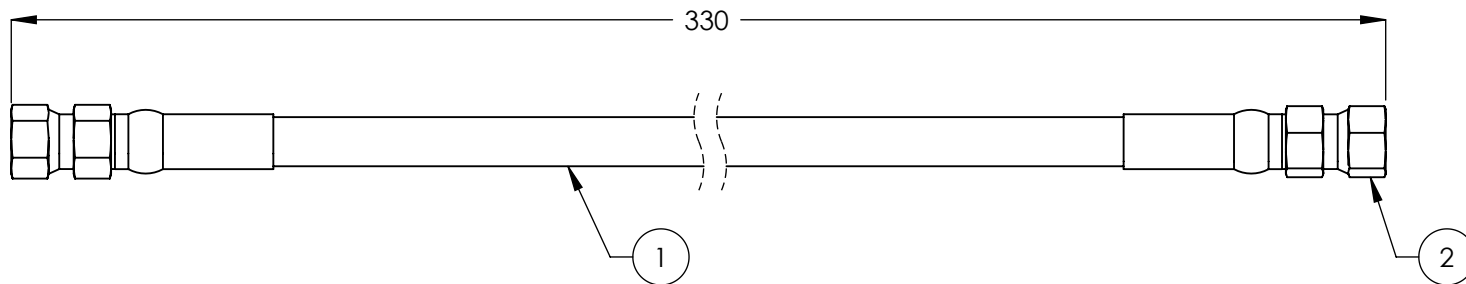
Mr. Cai Yefeng  
 Zhuji Bingde Machinery Co., Ltd  
 Tel" +86 13706859060

#### 2. Vendor Information (Or for Reference)

Approved Vendor	Vendor Part #	Contact #	AUTHORIZED COMPONENT PROVIDER
1) Zhuji Bingde Machinery Co., Ltd	5570129	+86 13706859060	X
2)			

OR BENDPAK ENGINEERING APPROVED EQUIVALENT

REVISION				
REV	DESCRIPTION	DATE	EDITED BY	ECO#
C	UPDATED TITLE TO REFLECT WHERE USED AND NEXT ASSEMBLIES	10/07/2014	TM	00663
D	REPLACED 5570110 WITH 5570129 TO REFLECT INVENTORY	11/20/2014	TM	00673
E	UPDATED TITLE TO REFLECT WHERE USED, UPDATED NEXT ASSEMBLIES	07/22/2015	JM	00712
E-001	UPDATED NEXT ASSEMBLIES	02/22/2016	CA	00738
E-002	UPDATED NEXT ASSEMBLIES	02/02/2017	TM	00806



**NOTE: UNLESS OTHERWISE SPECIFIED.**

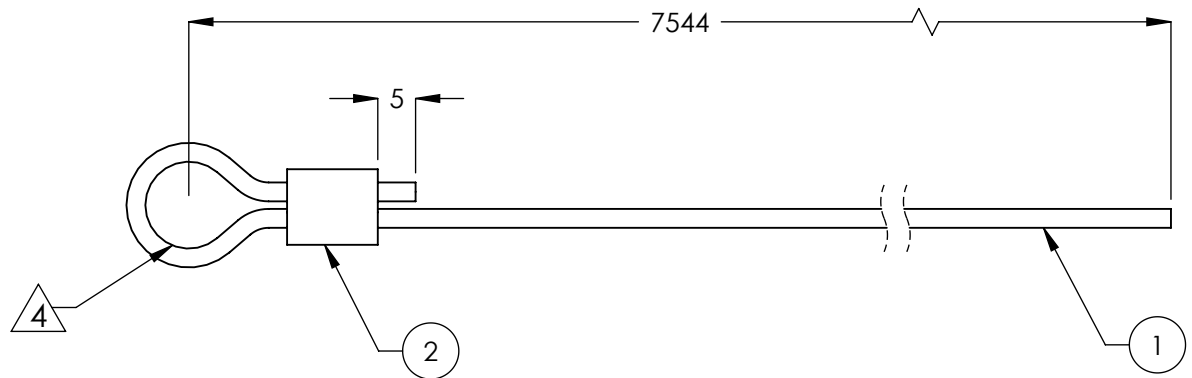
1. FOR ITEM 1 SPECIFICATIONS REFER TO PART SPECIFICATION FORM
2. (\*)ITEM 1 QTY FOR REFERENCE ONLY

NEXT ASSEMBLY
5240821
5250037
5250038
5250048
5250243

ITEM NO.	PART NUMBER	DESCRIPTION	QTY.	REV
1	5570129	Ø6.4 ID HYDRAULIC HOSE	264mm*	--
2	5550325	FTG NPL Ø1/4 CRIMP x -04 JIC	2	--

DO NOT SCALE DRAWING	NAME	DATE	 1645 LEMONWOOD DR. SANTA PAULA, CA 93060
	DRAWN	TM	
	CHECKED	DB	
DIMENSIONS ARE IN MM TOLERANCES: 0. = ±1.5 0.0 = ±1.0 0.00 = ±0.25 0.000 = ±0.13 ANGULAR: MACH±2° SURFACE FINISH 1.6 ISO Ra µm FOR MACHINED SURFACES UNLESS OTHERWISE SPECIFIED		THIRD ANGLE PROJECTION	TITLE: MDS-6K, XPR-9D/10 HYDRAULIC HOSE ASSY Ø6.35 x 330mm DS
PROPRIETARY AND CONFIDENTIAL THE INFORMATION CONTAINED IN THIS DRAWING IS THE SOLE PROPERTY OF BENDPAK INC. ANY REPRODUCTION IN PART OR AS A WHOLE WITHOUT THE WRITTEN PERMISSION OF BENDPAK INC. IS PROHIBITED.		SIZE DWG. NO. <b>A</b> 5570176	REV E
SCALE: 1:2			SHEET 1 OF 1

REVISION		DATE	EDITED BY	ECO#
REV	DESCRIPTION			
B	UPDATED TITLE TO REFLECT WHERE USED, UPDATED NEXT ASSEMBLY, UPDATED LENGTH TO MATCH LENGTH IN TITLE	06/03/2010	TM	00367
B-001	UPDATED NEXT ASSEMBLY	09/08/2010	TM	00396
B-002	UPDATED NEXT ASSEMBLY	04/18/2011	MT	00454
C	UPDATED TITLE TO REFLECT WHERE USED, UPDATED BOM REVISION	02/06/2012	TM	00490
C-001	UPDATED NEXT ASSEMBLIES	06/20/2013	TM	00605
D	UPDATED TITLE TO REFLECT MARKETING, UPDATED NEXT ASSEMBLY	12/01/2015	TM	00738


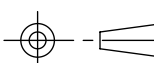


**NOTE: UNLESS OTHERWISE SPECIFIED.**

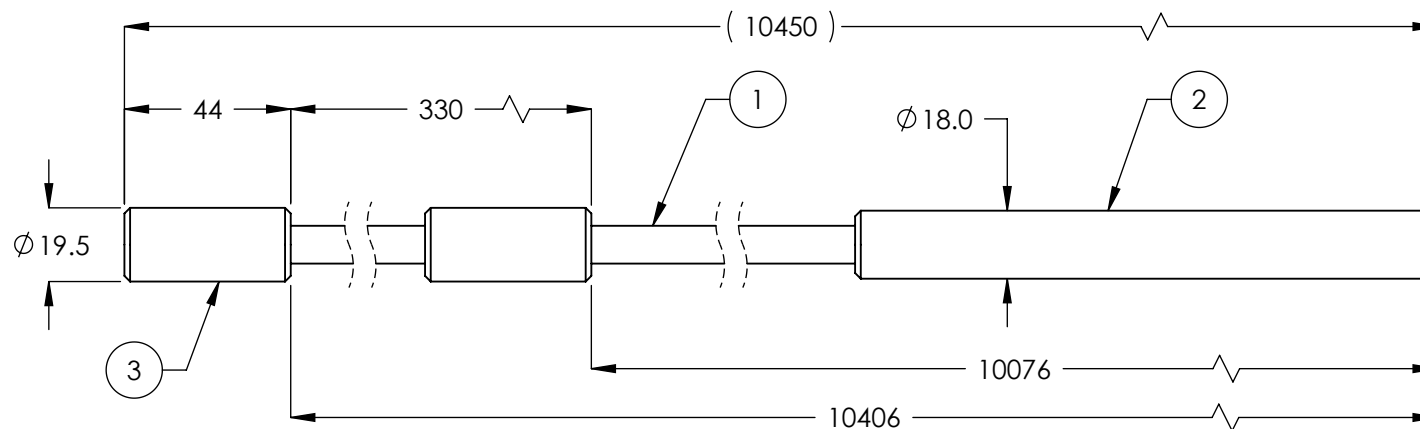
1. ASSEMBLE ITEMS AS SHOWN
2. FOR ITEM 1 SPECIFICATIONS REFER TO PART SPECIFICATION FORM
3. ITEM 1 QTY FOR REFERENCE ONLY
4. INNER EYE LOOP DIAMETER OF Ø15mm

NEXT ASSEMBLY  
5250038


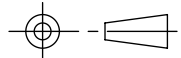
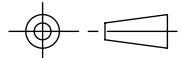
ITEM NO	PART NUMBER	DESCRIPTION		QTY	REV
1	5595682	CABLE SAFETY Ø2.4mm		7584mm*	A
2	5580210	Ø2.4mm OVAL CABLE CRIMP		1	A

DO NOT SCALE DRAWING		NAME	DATE	 <b>BendPak.</b> 1645 LEMONWOOD DR. SANTA PAULA, CA 93060 <small>HOVING AUTOMATIC SERVICE BUREAU</small>
DIMENSIONS ARE IN MM TOLERANCES: 0. = ±1.5 0.0 = ±0.5  ANGULAR: 0. = ±2°  SURFACE FINISH 1.6 ISO Ra µm FOR MACHINED SURFACES UNLESS OTHERWISE SPECIFIED	DRAWN	TM	09/15/2009	
	CHECKED	CA	02/22/2016	
THIRD ANGLE PROJECTION 				TITLE: XPR-9D Ø2.4 x 7544 SAFETY CABLE
PROPRIETARY AND CONFIDENTIAL THE INFORMATION CONTAINED IN THIS DRAWING IS THE SOLE PROPERTY OF BENDPAK INC. ANY REPRODUCTION IN PART OR AS A WHOLE WITHOUT THE WRITTEN PERMISSION OF BENDPAK INC. IS PROHIBITED.				SIZE DWG. NO. REV <b>A</b> 5595119 D
SCALE: 1:1				SHEET 1 OF 1

REVISION				
REV	DESCRIPTION	DATE	EDITED BY	ECO#
A	PRODUCTION RELEASE, DERIVED FROM 5595103	08/27/2010	TM	00396
A-001	UPDATED NEXT ASSEMBLY	04/18/2011	MT	00454
A-002	UPDATED NEXT ASSEMBLIES	07/05/2013	TM	00605
A-003	UPDATED NEXT ASSEMBLY	10/23/2013	TM	00615
A-004	UPDATED NEXT ASSEMBLIES	12/01/2015	TM	00738



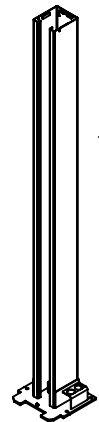
ITEM NO.	PART NUMBER	DESCRIPTION	QTY	REV
1	5595011	CABLE, LIFTING Ø10mm	10390mm*	-
2	5746022	Ø10 THREADED CABLE CONNECTOR	1	D
3	5746021	Ø10 CABLE END CONNECTOR	2	C

DO NOT SCALE DRAWING		NAME	DATE	 <b>BendPak</b> 1645 LEMONWOOD DR. SANTA PAULA, CA 93060	
DRAWN		TM	08/27/2010		
CHECKED		CA	02/22/2016		
DIMENSIONS ARE IN MM TOLERANCES: 0. = ±1.5 0.0 = ±0.5  ANGULAR: 0. = ±2°  SURFACE FINISH 1.6 ISO Ra µm FOR MACHINED SURFACES UNLESS OTHERWISE SPECIFIED		THIRD ANGLE PROJECTION			
				<b>TITLE:</b> XPR-9D CABLE ASSEMBLY Ø10 x 10450mm DBST	
<b>PROPRIETARY AND CONFIDENTIAL</b> THE INFORMATION CONTAINED IN THIS DRAWING IS THE SOLE PROPERTY OF BENDPAK INC. ANY REPRODUCTION IN PART OR AS A WHOLE WITHOUT THE WRITTEN PERMISSION OF BENDPAK INC. IS PROHIBITED.		<b>SIZE</b> DWG. NO.		<b>REV</b>	
<b>A</b>		5595364		A	
<b>SCALE:</b> 1:2		<b>SHEET</b> 1 OF 1			

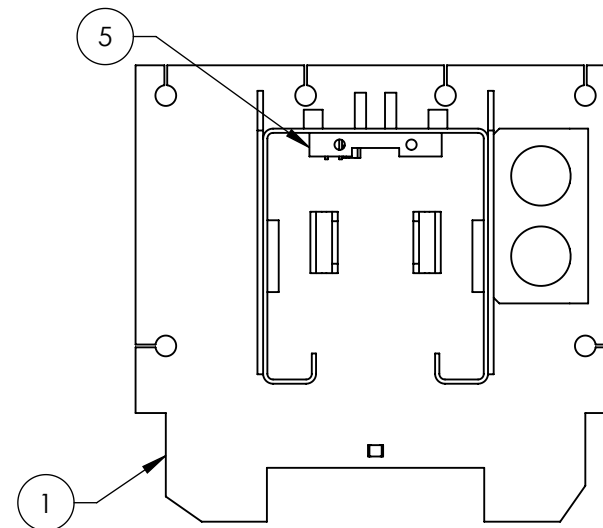
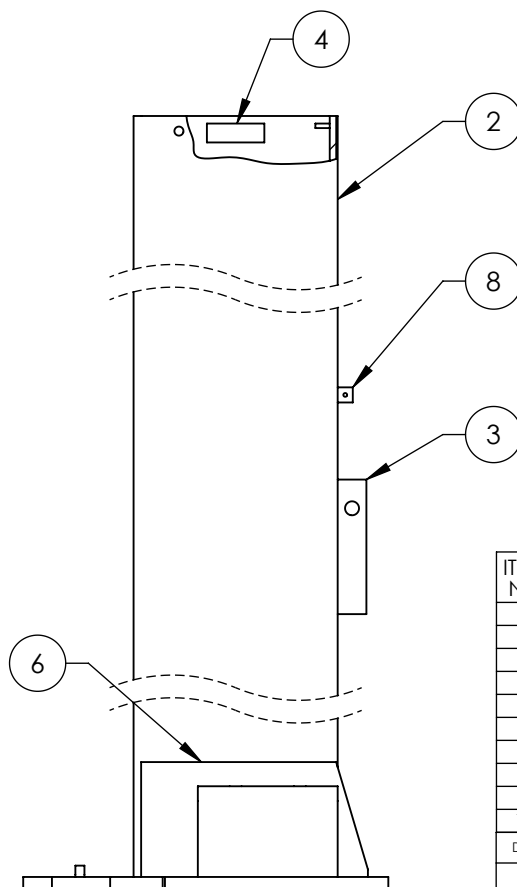
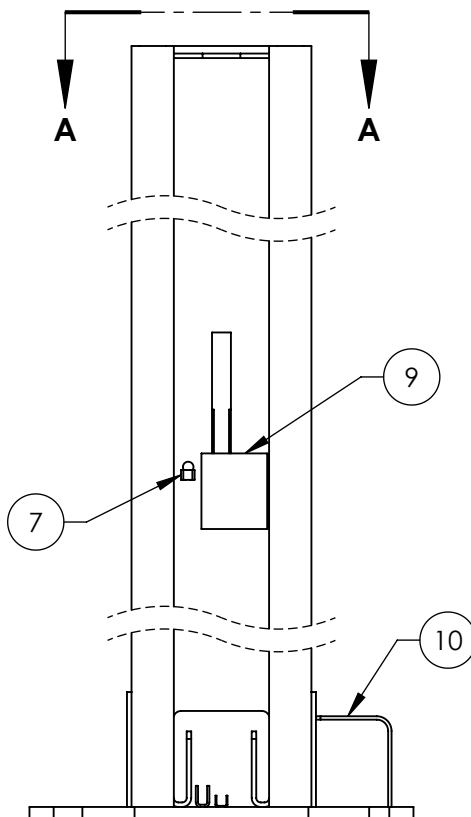
# **NOTE: UNLESS OTHERWISE SPECIFIED.**

- FOR ITEM 1 SPECIFICATIONS REFER TO PART SPECIFICATION FORM
- LENGTH SHOWN IS AFTER SWAGING
- (\*)ITEM 1 QTY FOR REFERENCE ONLY

NEXT ASSEMBLY  
5250038



ISOMETRIC VIEW  
FOR REFERENCE ONLY  
DO NOT SCALE



SECTION A-A  
SCALE 1 : 8

REVISION				
REV	DESCRIPTION	DATE	EDITED BY	ECO#
E	TIGHTENED TOLERANCE OF DISTANCE OF 5736635, UPDATED BOM REVISION	11/20/2014	TM	00673
F	ADDED 5730075 UPDATED TITLE TO REFLECT MARKETING, UPDATED BOM REVISIONS AND NEXT ASSEMBLIES	11/23/2015	TM	00738

ITEM NO	PART NUMBER	DESCRIPTION	QTY	REV
1	5620368	XPR-9D OFF SIDE BASE PLATE WELDMENT	1	D
2	5701224	XPR-9D OFF SIDE BARE POST	1	E
3	5736635	RTL/XPR SAFETY RELEASE PLATE	2	C
4	5735700	XPR TOP TROUGH SUPPORT	2	C
5	5701457	XPR TOP TROUGH TIE PLATE	1	C
6	5730103	XPR-9/10 POST GUSSET	2	C
7	5210004	GP/PCL/XPR SAFETY SHEAVE CLAMP	1	C
8	5760001	SAFETY COVER BLOCK	2	C
9	5735228	XPR STIFFENING PLATE	1	B
10	5730075	XPR POST ASSEMBLY LIFT HEAD FOOT GUARD	1	A

DO NOT SCALE DRAWING

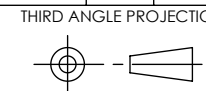
NAME	DATE
DRAWN TM	11/19/2009
CHECKED CA	02/16/2016

**BendPak** 1645 LEMONWOOD DR.  
SANTA PAULA, CA 93060

DIMENSIONS ARE IN MM  
TOLERANCES:  
0. = ±1.5  
0.0 = ±0.5

ANGULAR: 0. = ±2°

SURFACE FINISH 1.6 ISO Ra µm  
FOR MACHINED SURFACES  
UNLESS OTHERWISE SPECIFIED



PROPRIETARY AND CONFIDENTIAL  
THE INFORMATION CONTAINED IN THIS DRAWING IS  
THE SOLE PROPERTY OF BENDPAK INC. ANY  
REPRODUCTION IN PART OR AS A WHOLE WITHOUT  
THE WRITTEN PERMISSION OF BENDPAK INC. IS  
PROHIBITED.

TITLE: XPR-9DS OFF SIDE  
POST WELDMENT

SIZE DWG. NO. REV  
**A** 5600384 F

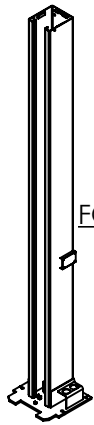
SCALE: 1:10

SHEET 1 OF 3

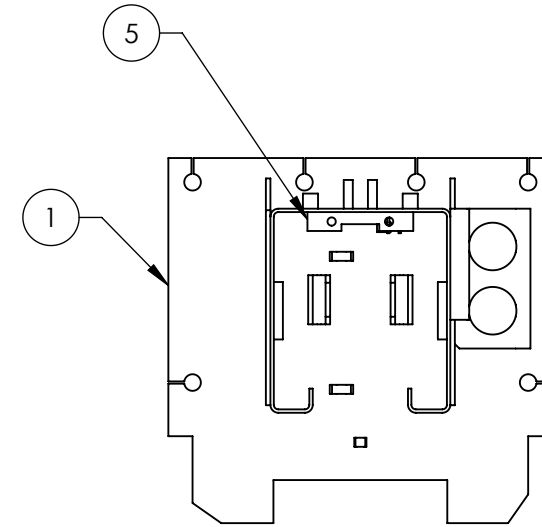
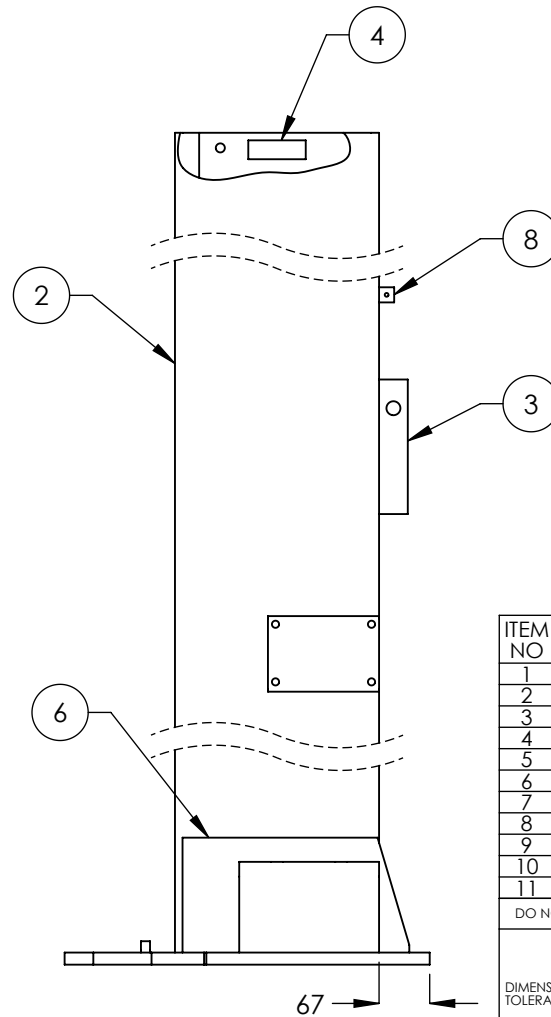
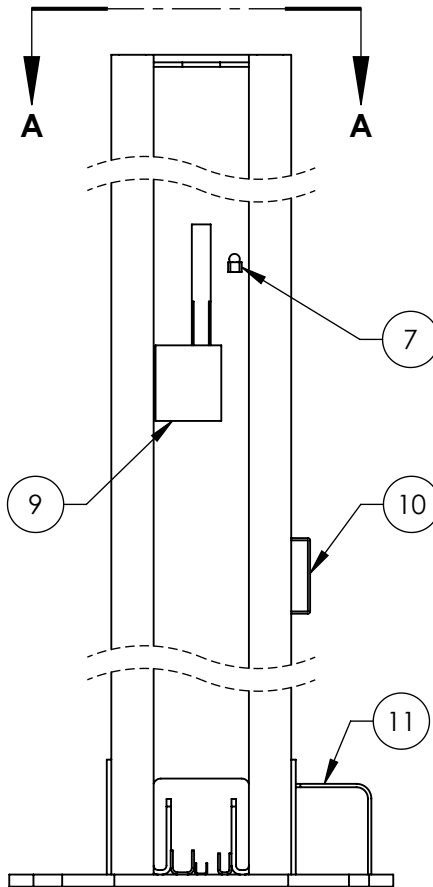
**NOTE: UNLESS OTHERWISE SPECIFIED.**

- BREAK AND DEBURR ALL SHARP EDGES 0.3mm
- REMOVE ALL WELD SPLATTER
- DIMENSIONS SHOWN ARE AFTER PAINTING
- PAINT BENDPAK BLUE

NEXT ASSEMBLY  
5215394



ISOMETRIC VIEW  
FOR REFERENCE ONLY  
DO NOT SCALE



SECTION A-A

REVISION				
REV	DESCRIPTION	DATE	EDITED BY	ECO#
E	UPDATED BOM REVISION	06/17/2013	TM	00605
F	TIGHTENED TOLERANCE OF DISTANCE OF 5736635, UPDATED BOM REVISION	11/19/2014	TM	00673
G	ADDED 5730075 UPDATED TITLE TO REFLECT MARKETING, UPDATED BOM REVISIONS AND NEXT ASSEMBLY	11/23/2015	TM	00738

ITEM NO	PART NUMBER	DESCRIPTION	QTY	REV
1	5620369	XPR-9D POWER SIDE BASE PLATE WELDMENT	1	E
2	5701225	XPR-9D POWER SIDE BARE POST	1	E
3	5736635	RTL/XPR SAFETY RELEASE PLATE	2	C
4	5735700	XPR TOP TROUGH SUPPORT	2	C
5	5701457	XPR TOP TROUGH TIE PLATE	1	C
6	5730103	XPR-9/10 POST GUSSET	2	C
7	5210004	GP/PCL/XPR SAFETY SHEAVE CLAMP	1	C
8	5760001	SAFETY COVER BLOCK	2	C
9	5735228	XPR STIFFENING PLATE	1	B
10	5700001	MOUNTING BRACKET	1	B
11	5730075	XPR POST ASSEMBLY LIFT HEAD FOOT GUARD	1	A

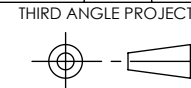
DO NOT SCALE DRAWING

NAME	DATE
DRAWN TM	11/23/2009
CHECKED CA	02/16/2016

DIMENSIONS ARE IN MM  
TOLERANCES:  
0. = ±1.5  
0.0 = ±0.5

ANGULAR: 0. = ±2°

SURFACE FINISH 1.6 ISO Ra μm  
FOR MACHINED SURFACES  
UNLESS OTHERWISE SPECIFIED



PROPRIETARY AND CONFIDENTIAL  
THE INFORMATION CONTAINED IN THIS DRAWING IS  
THE SOLE PROPERTY OF BENDPAK INC. ANY  
REPRODUCTION IN PART OR AS A WHOLE WITHOUT  
THE WRITTEN PERMISSION OF BENDPAK INC. IS  
PROHIBITED.

**BendPak** 1645 LEMONWOOD DR.  
SANTA PAULA, CA 93060

TITLE: XPR-9DS POWER SIDE  
POST WELDMENT

SIZE	DWG. NO.	REV
A	5600385	G

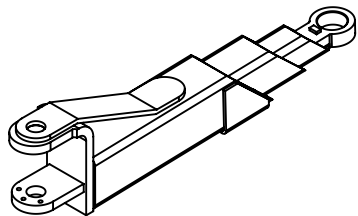
SCALE: 1:10

SHEET 1 OF 3

**NOTE: UNLESS OTHERWISE SPECIFIED.**

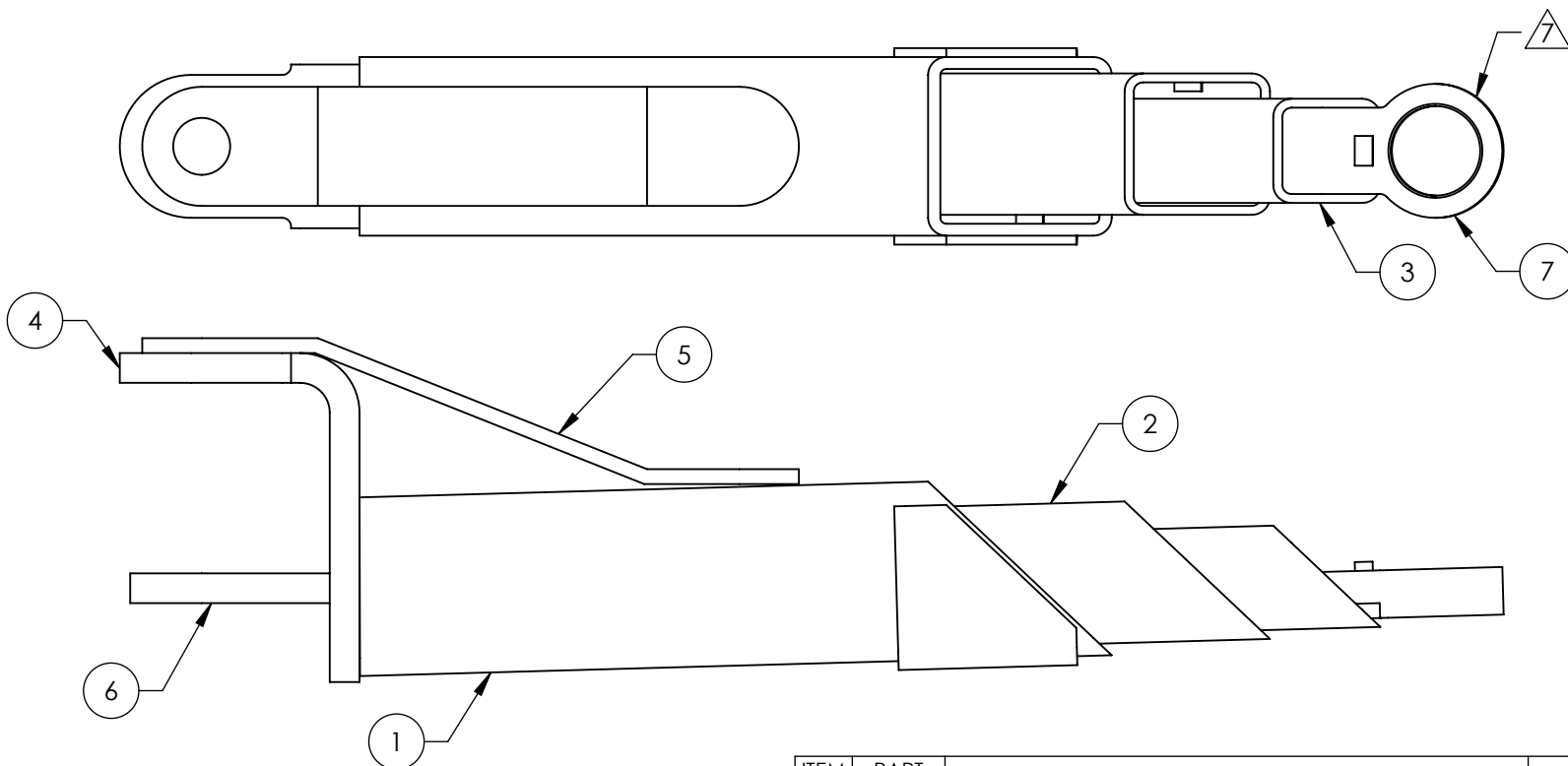
- BREAK AND DEBURR ALL SHARP EDGES 0.3mm
- REMOVE ALL WELD SPLATTER
- DIMENSIONS SHOWN ARE AFTER PAINTING
- PAINT BENDPAK BLUE

NEXT ASSEMBLY  
5215393



ISOMETRIC VIEW  
FOR REFERENCE ONLY  
DO NOT SCALE

REV	DESCRIPTION	DATE	EDITED BY	ECO#
C	UPDATED BOM REVISION	03/22/2016	TM	00750
D	WAS 12 NOW 18 ON SHEET 2, ADDED RAL NUMBER TO NOTES, UPDATED BOM REVISIONS	07/11/2017	TS	00850
E	UPDATED BOM REVISION	09/01/2017	TM	00877


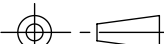


**NOTE: UNLESS OTHERWISE SPECIFIED.**

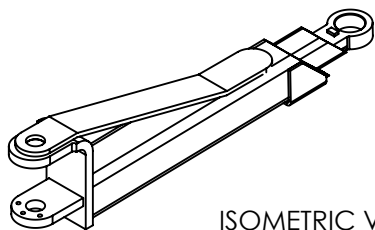
1. BREAK AND DEBURR ALL SHARP EDGES 0.3mm
2. REMOVE ALL WELD SPLATTER
3. MASK ALL THREADED HOLES AND BORES
4. DIMENSIONS SHOWN ARE AFTER PAINTING
5. PAINT BENDPAK YELLOW (RAL-1018)
6. 5620326 & 5620365 MUST SLIDE FREELY

7. WELD 5736906 TO 5620326 AFTER INSTALLING 5620326 THROUGH 5620365 AS SHOWN.

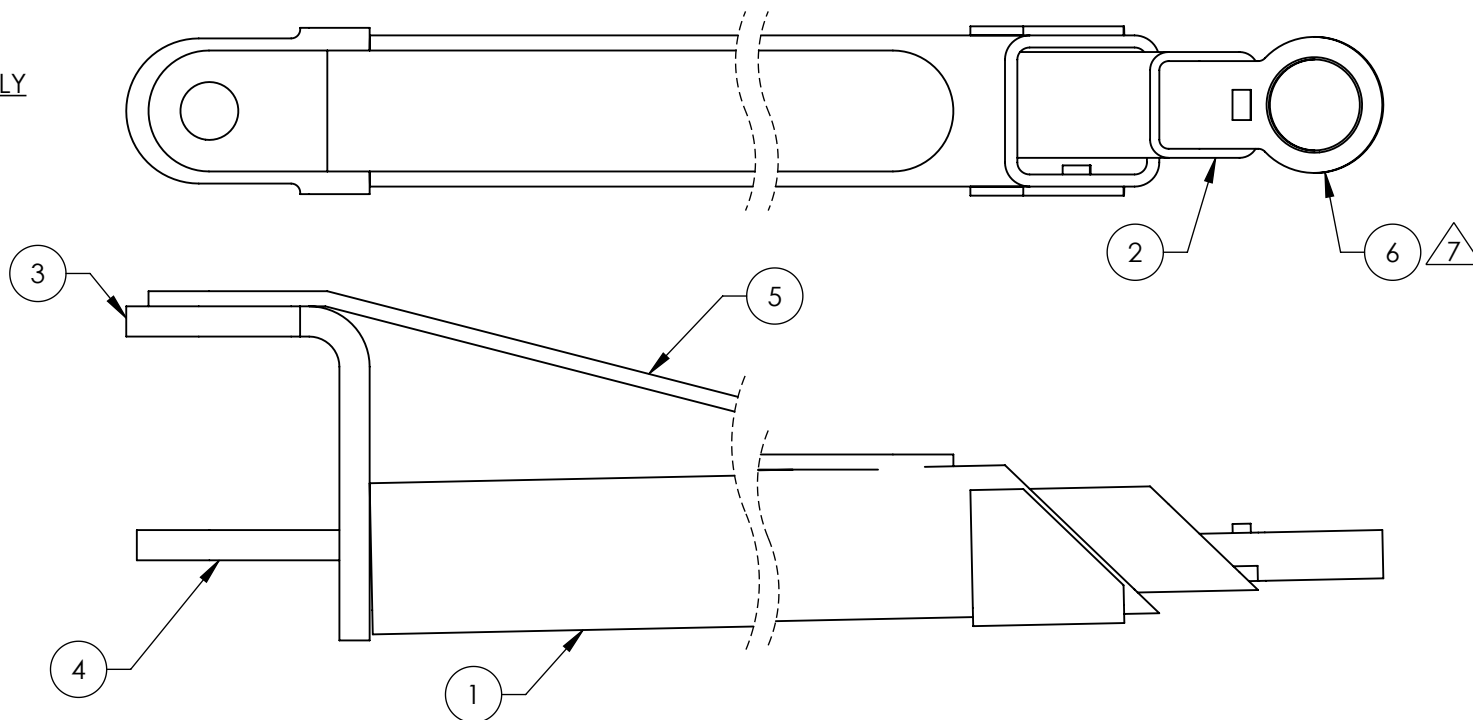
ITEM NO	PART NUMBER	DESCRIPTION	QTY	REV
1	5620364	XPR-9/9D/10 TRIPLE OUTER SQUARE TUBE WELDMENT (505mm)	1	F
2	5620365	XPR-9/9D/10 TRIPLE MIDDLE SQUARE TUBE WELDMENT (502mm)	1	D
3	5620326	XPR-9/9D/10 TRIPLE ARM LOW PROFILE INNER SQUARE TUBE WELDMENT (502mm)	1	A
4	5701153	XPR-9/10 ARM EAR	1	D
5	5736286	XPR 9/10 TRIPLE ARM SUPPORT	1	D
6	5701068	XPR-9/10 BOLT ON EAR PLATE	1	E
7	5736906	ARM ADAPTOR 58mm WIDE WELDMENT	1	B

DO NOT SCALE DRAWING		NAME		DATE			
<div>DIMENSIONS ARE IN MM</div> <div>TOLERANCES:</div> <div>0. = ±1.5</div> <div>0.0 = ±0.5</div> <div>ANGULAR: 0. = ±2°</div> <div>SURFACE FINISH 1.6 ISO Ra µm</div> <div>FOR MACHINED SURFACES</div> <div>UNLESS OTHERWISE SPECIFIED</div>		DRAWN	JM	06/23/2015		1645 LEMONWOOD DR.	
		CHECKED	AW	9/11/2017		SANTA PAULA, CA 93060	
		THIRD ANGLE PROJECTION				TITLE:	
<div>Y</div> <div></div>		<div>PROPRIETARY AND CONFIDENTIAL</div> <div>THE INFORMATION CONTAINED IN THIS DRAWING IS THE SOLE PROPERTY OF <b>BENDPAK INC.</b> ANY REPRODUCTION IN PART OR AS A WHOLE WITHOUT THE WRITTEN PERMISSION OF <b>BENDPAK INC.</b> IS PROHIBITED.</div>				XPR-9/9D/10 LOW PROFILE	
						TRIPLE TELESCOPING ARM	
				WELDMENT		SIZE DWG. NO.	
		<b>A</b>		5600997		E	
		SCALE: 1:5				SHEET 1 OF 3	

NEXT ASSEMBLY  
5215287



ISOMETRIC VIEW  
FOR REFERENCE ONLY  
DO NOT SCALE





REVISION				
REV	DESCRIPTION	DATE	EDITED BY	ECO#
B	REPLACED 5736906 WITH 5601026	09/22/2015	TM	00729
C	UPDATED TITLE TO REFLECT MARKETING, UPDATED BOM REVISION	03/22/2016	TM	00750
D	WAS 12 NOW 18 ON SHEET 2, ADDED RAL NUMBER TO NOTES, UPDATED BOM REVISION	07/11/2017	TS	00850

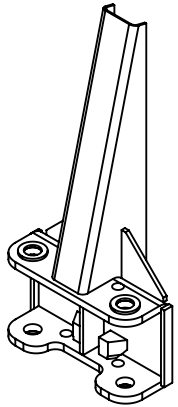
**NOTE: UNLESS OTHERWISE SPECIFIED.**

1. BREAK AND DEBURR ALL SHARP EDGES 0.3mm
2. REMOVE ALL WELD SPLATTER
3. MASK ALL THREADED HOLES AND BORES
4. DIMENSIONS SHOWN ARE AFTER PAINTING
5. PAINT BENDPAK YELLOW (RAL-1018)
6. 5620327 MUST SLIDE FREELY
7. WELD 5736906 TO 5620327 AFTER INSTALLING 5620327 THROUGH 5620363 AS SHOWN.

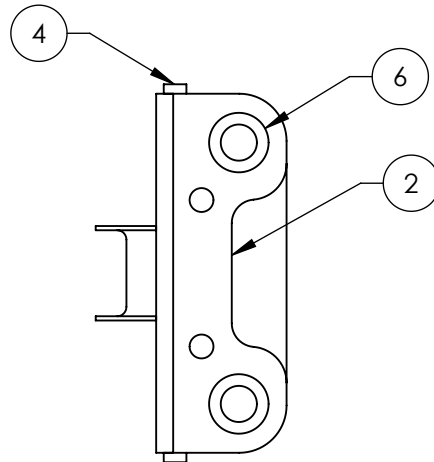
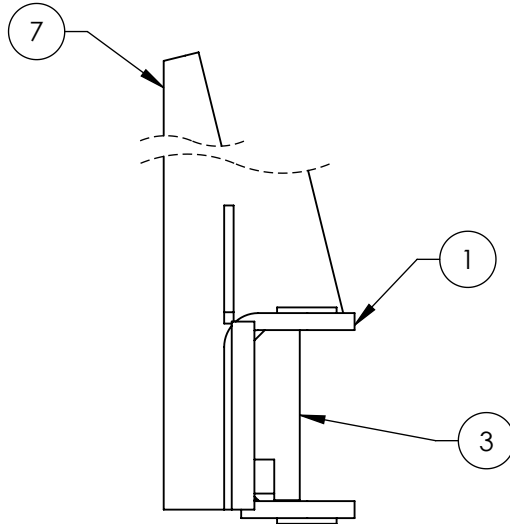
ITEM NO	PART NUMBER	DESCRIPTION	QTY	REV
1	5620363	XPR-9/9D/10 OUTER SQUARE TUBE WELDMENT (676mm)	1	D
2	5620327	XPR-9/9D/10 LOW PROFILE TWO STAGE INNER ARM WELDMENT (676mm)	1	A
3	5701153	XPR-9/10 ARM EAR	1	D
4	5701068	XPR-9/10 BOLT ON EAR PLATE	1	E
5	5736283	XPR-9/9D/10 EXTRA LONG ARM SUPPORT	1	E
6	5601026	ARM ADAPTOR 58mm WIDE WELDMENT	1	B

DO NOT SCALE DRAWING		NAME		DATE		 <b>BendPak.</b>	
DIMENSIONS ARE IN MM TOLERANCES: 0. = ±1.5 0.0 = ±0.5  ANGULAR: 0. = ±2°  SURFACE FINISH 1.6 ISO Ra µm FOR MACHINED SURFACES UNLESS OTHERWISE SPECIFIED		DRAWN		JM		06/23/2015	
		CHECKED		AW		8/11/2017	
		THIRD ANGLE PROJECTION					
							
Y		PROPRIETARY AND CONFIDENTIAL THE INFORMATION CONTAINED IN THIS DRAWING IS THE SOLE PROPERTY OF <b>BENDPAK INC.</b> ANY REPRODUCTION IN PART OR AS A WHOLE WITHOUT THE WRITTEN PERMISSION OF <b>BENDPAK INC.</b> IS PROHIBITED.					
		SIZE		DWG. NO.		REV	
		<b>A</b>		5600998		D	
		SCALE: 1:5				SHEET 1 OF 3	

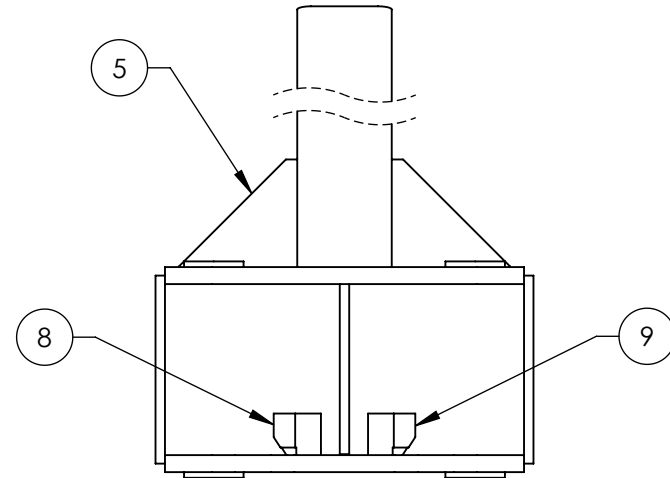





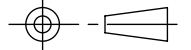
ISOMETRIC VIEW  
FOR REFERENCE ONLY  
DO NOT SCALE



REVISION				
REV	DESCRIPTION	DATE	EDITED BY	ECO#
E	UPDATED BOM REVISIONS	02/13/2014	TM	00640
F	UPDATED BOM REVISIONS	06/03/2014	TM	00649
F-001	UPDATED NEXT ASSEMBLY	10/15/2015	HG	00732
G	UPDATED BOM REVISIONS	11/23/2015	TM	00738

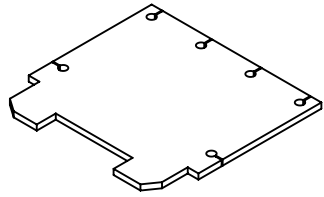


ITEM NO	PART NUMBER	DESCRIPTION	QTY	REV
1	5701230	XPR-9/10 LIFT HEAD TOP ARM PLATE	1	E
2	5736263	XPR-9/10 LIFT HEAD BOTTOM ARM PLATE	1	E
3	5736261	XPR-9/10 LIFT HEAD PLATE SPACER	1	D
4	5735243	GP-7, XPR-9/10 LIFT HEAD ARM PLATE SUPPORT	2	C
5	5736259	ALL GP/XPR LIFT HEAD SIDE GUSSET	2	B
6	5746564	XPR-9/10/12 REINFORCING WASHER	4	E
7	5700186	XPR-9/10 LIFT HEAD GUSSET	1	B
8	5736543	2 POST LIGHT DUTY ARM GEAR RESTRAINT STOP LH	1	A
9	5736545	2 POST LIGHT DUTY ARM GEAR RESTRAINT STOP RH	1	A

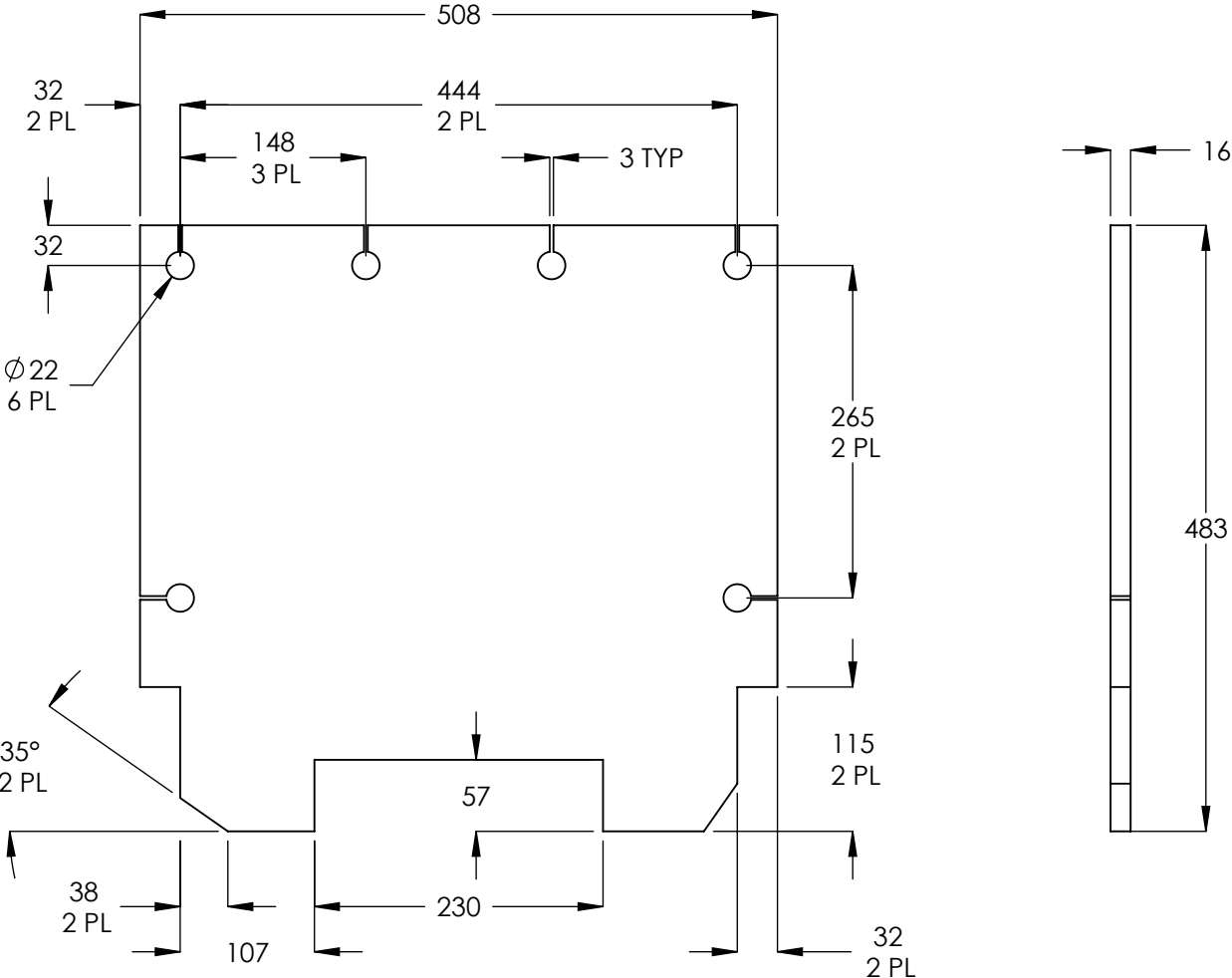
DO NOT SCALE DRAWING		NAME	DATE	 <b>BendPak</b> <small>HOISTING AUTOMATIC SINCE 1930</small> 1645 LEMONWOOD DR. SANTA PAULA, CA 93060
		DRAWN	TM	11/24/2009
		CHECKED	CA	02/11/2016
DIMENSIONS ARE IN MM TOLERANCES: 0. = ±1.5 0.0 = ±0.5 ANGULAR: 0. = ±2°		THIRD ANGLE PROJECTION 		
NEXT ASSEMBLY 5600502 5600503 5600508 5601040		SURFACE FINISH 1.6 ISO Ra μm FOR MACHINED SURFACES UNLESS OTHERWISE SPECIFIED		
PROPRIETARY AND CONFIDENTIAL THE INFORMATION CONTAINED IN THIS DRAWING IS THE SOLE PROPERTY OF BENDPAK INC. ANY REPRODUCTION IN PART OR AS A WHOLE WITHOUT THE WRITTEN PERMISSION OF BENDPAK INC. IS PROHIBITED.		TITLE: XPR-9/10 LIFT HEAD GUSSET WELDMENT		
SCALE: 1:8		SHEET 1 OF 2		

**NOTE: UNLESS OTHERWISE SPECIFIED.**

- BREAK AND DEBURR ALL SHARP EDGES 0.3mm
- REMOVE ALL WELD SPLATTER



ISOMETRIC VIEW  
FOR REFERENCE ONLY  
DO NOT SCALE


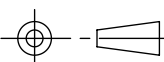


REVISION				
REV	DESCRIPTION	DATE	EDITED BY	ECO#
B	UPDATED TITLE TO REFLECT WHERE USED	06/03/2010	TM	00367
C	UPDATED TITLE TO REFLECT WHERE USED	02/01/2012	TM	00490
D	UPDATED TITLE TO REFLECT MARKETING	11/30/2015	TM	00738

**NOTE: UNLESS OTHERWISE SPECIFIED.**

1. BREAK AND DEBURR ALL SHARP EDGES 0.3mm
2. **MATERIAL:** HR ASTM A36 OR Q235 GB/T 700

NEXT ASSEMBLY
5620368
5620369

DO NOT SCALE DRAWING		NAME	DATE	<div> <b>BendPak.</b> <small>POWERING AUTOMATIC SERVICE EQUIPMENT</small></div> <div>1645 LEMONWOOD DR. SANTA PAULA, CA 93060</div>		
<div>DIMENSIONS ARE IN MM</div> <div>TOLERANCES: MACHINE TO</div> <div>0 = ±1.5</div> <div>0.0 = ±0.5</div> <div>0.00 = ±0.13</div> <div>ANGULAR: MACHINE TO</div> <div>0 = ±1/2°</div> <div>SURFACE FINISH 1.6 Ra µm</div> <div>FOR MACHINED SURFACES</div> <div>UNLESS OTHERWISE SPECIFIED</div>		DRAWN	TM			09/15/2009
		CHECKED	CA			02/09/2016
<div>THIRD ANGLE PROJECTION</div> <div></div>				TITLE:		
				XPR-9D BASE PLATE		
<div>THE INFORMATION CONTAINED IN THIS DRAWING IS THE SOLE PROPERTY OF <b>BENDPAK INC.</b> ANY REPRODUCTION IN PART OR AS A WHOLE WITHOUT THE WRITTEN PERMISSION OF <b>BENDPAK INC.</b> IS PROHIBITED.</div>		SIZE		DWG. NO.	REV	
		<div>A</div>		5736271	D	
		SCALE: 1:6		SHEET 1 OF 1		

## PART SPECIFICATION FORM

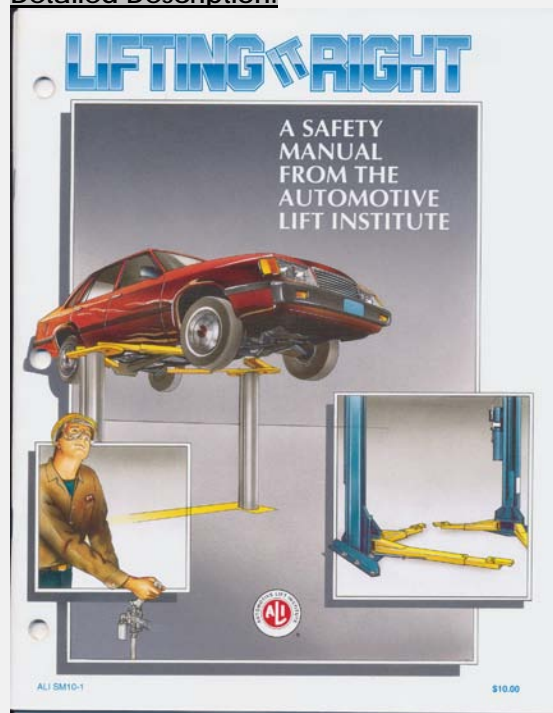
<b>BENDPAK Number:</b>	5900147
<b>MRP Description:</b>	SAFETY MANUAL ALI / SM 93-1
<b>Date:</b>	12/28/2010
<b>ECO :</b>	00431

### 1. Engineering Specification

**Application:**

ALI SAFETY MANUAL

**Detailed Description:**



### 2. Vendor Information

Approved Vendor	Vendor Part #	Contact #	Preferred Vendor
1)			

## PART SPECIFICATION FORM

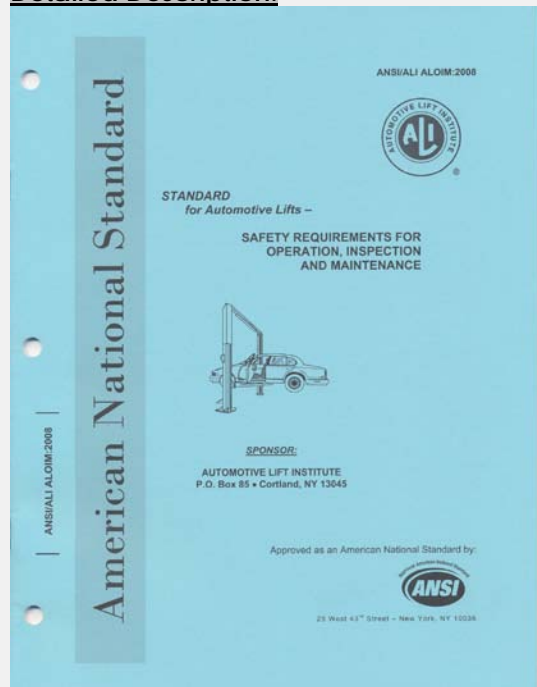
<b>BENDPAK Number:</b>	5900152
<b>MRP Description:</b>	ALIGN OIM OPERATION INSPECTION & MAINTENANCE
<b>Date:</b>	12/28/2010
<b>ECO :</b>	00431

### 1. Engineering Specification

**Application:**

ALI OPERATION INSPECTION & MAINTENANCE MANUAL

**Detailed Description:**



### 2. Vendor Information

Approved Vendor	Vendor Part #	Contact #	Preferred Vendor
1)			

## PART SPECIFICATION FORM

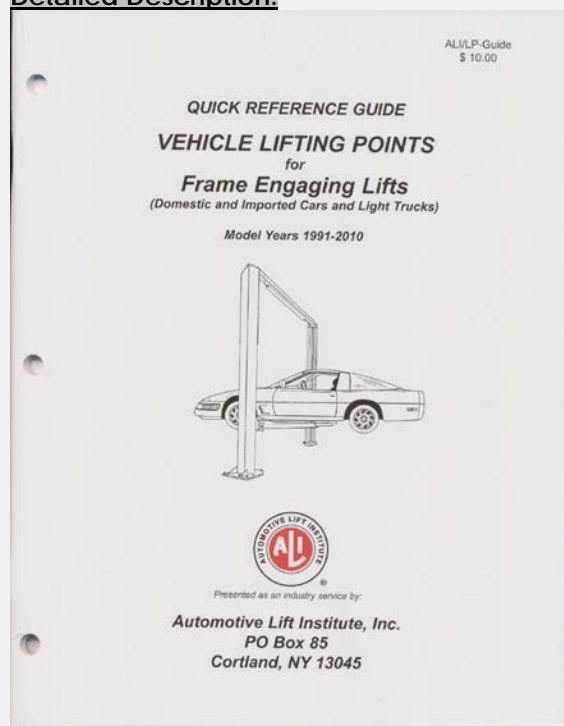
<b>BENDPAK Number:</b>	5900280
<b>MRP Description:</b>	ALI/LP FRAME ENGAGING LIFTS GUIDE
<b>Date:</b>	12/28/2010
<b>ECO :</b>	00431

### 1. Engineering Specification

**Application:**

ALI LIFTING GUIDE

**Detailed Description:**



### 2. Vendor Information

Approved Vendor	Vendor Part #	Contact #	Preferred Vendor
1)			

## PART SPECIFICATION FORM

<b>BENDPAK Number:</b>	5900348
<b>MRP Description:</b>	XPR-9DS INSTALLATION MANUAL
<b>Date:</b>	03/25/2016
<b>ECO :</b>	00750

### 1. Engineering Specification

#### Application:

INSTALLATION MANUAL

#### Detailed Description:

##### **WARNING**

###### EUROPEAN USERS

400V 50Hz SUPPLY DETAILS ARE INCLUDED WITH ELECTRICAL CONTROL BOX. DISREGARD SUPPLY WIRING DETAILS IN THIS MANUAL.

##### IMPORTANT SAFETY INSTRUCTIONS SAVE THESE INSTRUCTIONS

PLEASE READ THE ENTIRE CONTENTS OF THIS MANUAL PRIOR TO INSTALLATION AND OPERATION. BY PROCEEDING WITH LIFT INSTALLATION AND OPERATION YOU AGREE THAT YOU FULLY UNDERSTAND AND COMPREHEND THE FULL CONTENTS OF THIS MANUAL. FORWARD THIS MANUAL TO ALL OPERATORS. FAILURE TO OPERATE THIS EQUIPMENT AS DIRECTED MAY CAUSE INJURY OR DEATH.

MANITY A 03-20-16  
P/N 5000348

##### INSTALLATION AND OPERATION MANUAL

9,000 POUND CAPACITY  
SURFACE MOUNTED  
TWO-POST LIFTS

MODELS:  
XPR-9DS  
XPR-9DTS



##### READ FIRST



ORIGINAL INSTRUCTIONS IN  
ENGLISH LANGUAGE

Keep this operation manual near the machine at all times. Make sure that ALL USERS read this manual.

##### RECEIVING

The shipment should be thoroughly inspected as soon as it is received. The signed Bill of Lading is acknowledgement by the shipping carrier as receipt of this product as listed in your invoice as being in a good condition of shipment. If any of these goods listed on this Bill of Lading are missing or damaged, do not accept goods until the shipping carrier makes a notation on the freight bill of the missing or damaged goods. Do this for your own protection.

##### BE SAFE

Your new lift was designed and built with safety in mind. However, your overall safety can be increased with proper training and thoughtful operation on the part of the operator. DO NOT operate or repair this equipment without reading this manual and the important safety instructions shown inside. Keep this operation manual near the lift at all times. Make sure that ALL USERS read and understand this manual.

### 2. Vendor Information

Approved Vendor	Vendor Part #	Contact #	Preferred Vendor
1)			

## PART SPECIFICATION FORM

<b>BENDPAK Number:</b>	5905109
<b>MRP Description:</b>	WARNING ALI/WL 101C
<b>Date:</b>	08/03/2017
<b>ECO :</b>	00850

### 1. Engineering Specification

#### Application:

ALI 2 POST SAFETY STICKER KIT

#### Detailed Description:

SIZE: ALI 2 POST CAUTION LABELS: 14" L x 8.5" W (356mm x 216mm)

ALI NOTICE LABEL: 1.75" L x 3" W (4.5mm x 76mm)

**Automotive Lift Institute, Inc**  
**WL 101 Series**  
**Label Kit**

**NOTICE**

If attachments, modifications, or configuration changes are made to the lift, the lift's electrical, lifting, or other safety features may be affected. The user must consult the lift's manual for more information. The participant for information pertaining to certified attachments, accessories, or configuration modifying components.

www.aliinfo.org ©2011 by ALI, Inc. ALI WL101KIT

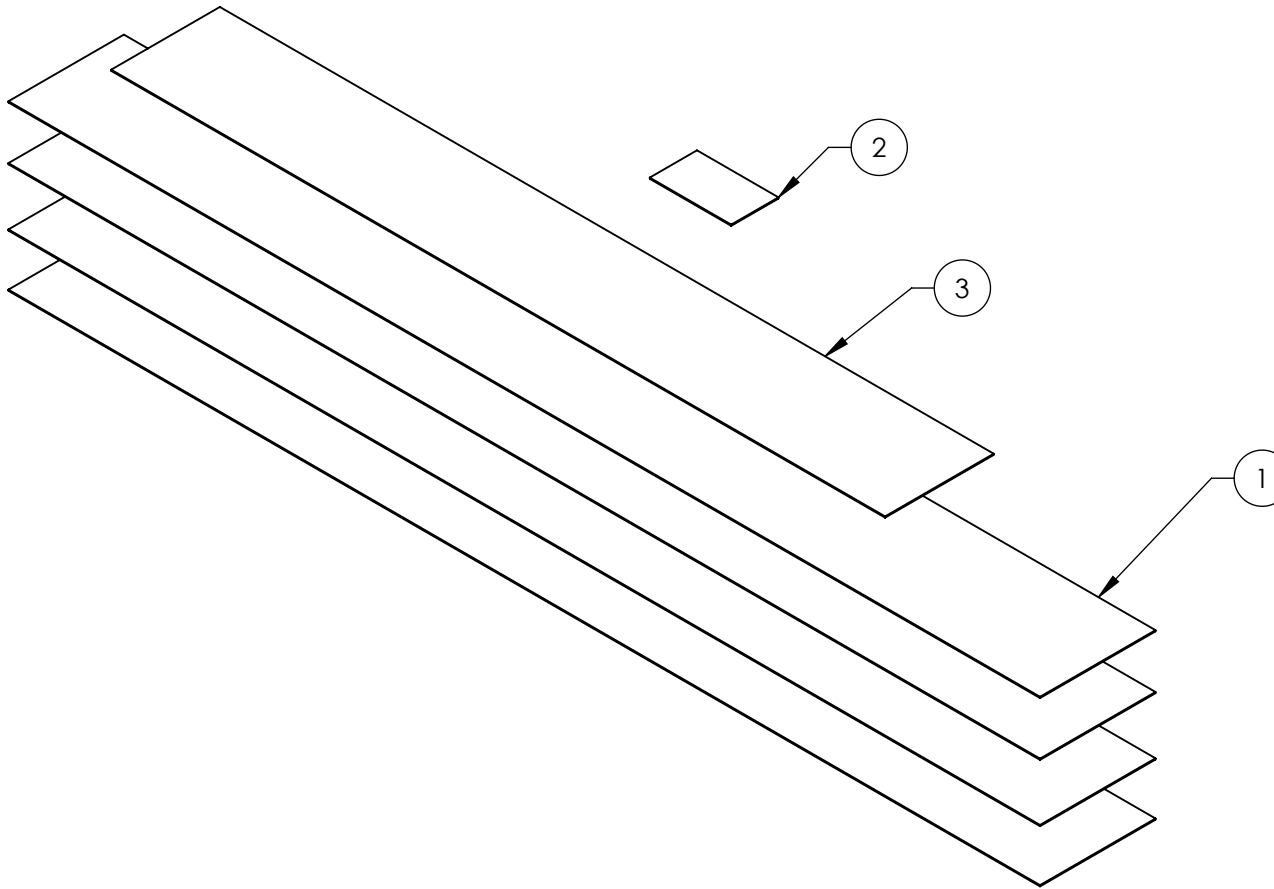
Funding for the development and validation of these labels was provided by the Automotive Lift Institute, P.O. Box 33116, Indianapolis, IN 46233. They are protected by copyright. Set of labels may be obtained from ALI or its member companies.



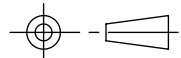
© 1999 by ALI, Inc. ALI/WL101

### 2. Vendor Information

Approved Vendor	Vendor Part #	Contact #	Preferred Vendor
1) ALI	WL 101 a, b, & c / WL101I A01		

		REVISION		
REV	DESCRIPTION	DATE	EDITED BY	ECO#
A	DERIVED FROM 5905200	06/20/2013	TM	00605
B	REPLACED 5905105 WITH 5905311	05/13/2105	TM	00689
C	ADDED (2) 5905311	12/29/2015	TM	00738



ITEM NO	PART NUMBER	DESCRIPTION		QTY	REV
1	5905311	BENDPAK LABEL; 4 x 38" WHITE INK		4	--
2	5905177	TO PROLONG LIFE OF TWO		1	--
3	5905555	2-POST SAFETY DECAL		1	--
DO NOT SCALE DRAWING		NAME	DATE	 <b>BendPak.</b> 1645 LEMONWOOD DR. <small>HOUSTON, TEXAS 77060</small> SANTA PAULA, CA 93060	
DIMENSIONS ARE IN MM  		DRAWN	TM 06/18/2013		
		CHECKED	CA 02/04/2016		
		THIRD ANGLE PROJECTION		TITLE: 2 POST DECAL KIT, LESS ALI	
		<small>PROPRIETARY AND CONFIDENTIAL  THE INFORMATION CONTAINED IN THIS DRAWING IS  THE SOLE PROPERTY OF BENDPAK INC. ANY  REPRODUCTION IN PART OR AS A WHOLE WITHOUT  THE WRITTEN PERMISSION OF BENDPAK INC. IS  PROHIBITED.</small>		SIZE	REV
				A	C
		SCALE: 1:5			SHEET 1 OF 1

**NOTE: UNLESS OTHERWISE SPECIFIED.**

1. SEE RECEIVED LIFT FOR PLACEMENT

NEXT ASSEMBLY  
ALL 2-POST LIFTS



## PART SPECIFICATION FORM

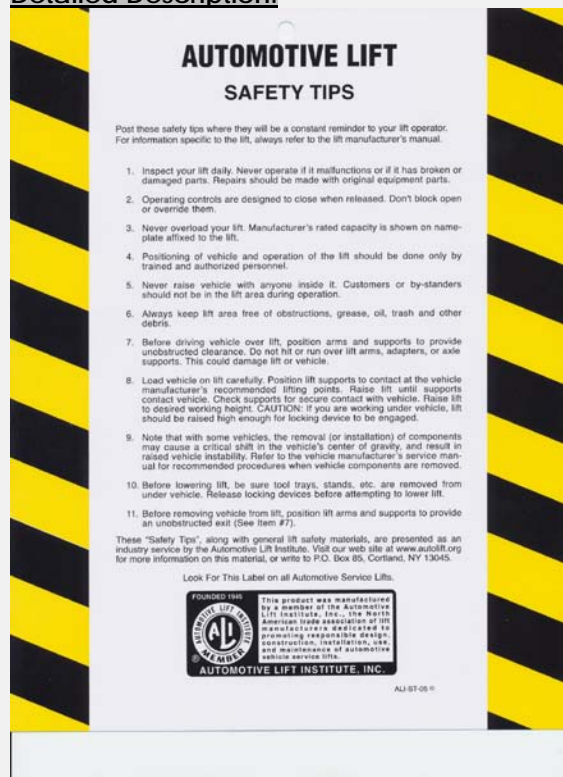
<b>BENDPAK Number:</b>	5905151
<b>MRP Description:</b>	SAFETY TIPS CARD ALI-ST 90
<b>Date:</b>	12/28/2010
<b>ECO :</b>	00431

### 1. Engineering Specification

#### Application:

ALI SAFETY TIPS

#### Detailed Description:



### 2. Vendor Information

Approved Vendor	Vendor Part #	Contact #	Preferred Vendor
1)			

## PART SPECIFICATION FORM

<b>BENDPAK Number:</b>	5905177
<b>MRP Description:</b>	TO PROLONG LIFT OF TWO
<b>Date:</b>	06/18/2013
<b>ECO :</b>	00605

### 1. Engineering Specification

**Application:**

RED CYLINDER WARNING

**Detailed Description:**

SIZE: 3" L x 1.75" W (76mm x 44mm)

**PLEASE READ**

Internal packing oil may cause the cylinders to bleed oil during start up. This is normal. To extend cylinder and seal life, raise the lift to full height at least once every day.

### 2. Vendor Information

Approved Vendor	Vendor Part #	Contact #	Preferred Vendor
1)			

## PART SPECIFICATION FORM

<b>BENDPAK Number:</b>	5905311
<b>MRP Description:</b>	BENDPAK LABEL; 4 x 38" WHITE INK
<b>Date:</b>	05/13/2015
<b>ECO :</b>	00689

### 1. Engineering Specification

**Application:**

BENDPAK LABEL

**Detailed Description:**



**SIZE:** 38" L x 4.25" W (965mm x 108mm)

- Material: Yellow Represents Clear Adhesive PET
- Size: 4.25"W x 38"H
- Thickness: 4 Mil
- Finish: Polished
- Ink: U.V. protected, Opaque White
- Print Process: Silk Screen, 85 line-screen (Opaque White ink, clear adhesive PET will fill in blank areas.)
- Lamination: Clear-gloss over-laminate for abrasion, chemical, and ultra violet protection

### 2. Vendor Information

Approved Vendor	Vendor Part #	Contact #	Preferred Vendor
1)			

## PART SPECIFICATION FORM

BENDPAK Number:	5905402
MRP Description:	MAX CAP DANGER
Date:	12/10/2015
ECO :	00724

### 1. Engineering Specification

#### Application:

LIFT CAPACITY STICKER

#### Detailed Description:



P/N 5905402

Size: 4"W x 5"H

Material: White Vinyl Pressure Sensitive Adhesive

Thickness: 4 Mil

Ink: U.V. protected CMYK 2/C Process

Finish: Polished

Print Process: Offset Lithography - 200 line-screen or 300 p.p.i. for digital

Lamination: Clear-gloss over-laminate for abrasion, chemical, and ultra violet protection

### 2. Vendor Information

Approved Vendor	Vendor Part #	Contact #	Preferred Vendor
1)			

## PART SPECIFICATION FORM

<b>BENDPAK Number:</b>	5905465
<b>MRP Description:</b>	MANUFACTURER LABEL
<b>Date:</b>	05/07/2013
<b>ECO :</b>	00593

### 1. Engineering Specification

#### Application:

MANUFACTURER LABEL

#### Detailed Description:

MFD. BY BENDPAK INC.

LIFT TYPE: SURFACE MOUNT      CAPACITY: MED/HVY DTY  
 POWER: ELECTRIC/HYDRAULIC      ANCHORS: AS EQUIPPED  
 INSTALLATION - SEE OWNERS GUIDE OR CONTACT FACTORY

#### SHIPPING DAMAGE CLAIMS

WHEN THIS EQUIPMENT IS SHIPPED, TITLE PASSES TO THE PURCHASER UPON RECEIPT FROM THE CARRIER. CONSEQUENTLY, CLAIMS FOR THE MATERIAL DAMAGED IN SHIPMENT MUST BE MADE BY THE PURCHASER AGAINST THE TRANSPORTATION COMPANY AT THE TIME SHIPMENT IS RECEIVED.

PLEASE READ ALL OPERATORS/USERS MANUAL(S) PRIOR TO INSTALLATION AND OPERATION. UNDERSTAND AND COMPREHEND THE FULL CONTENTS OF EACH MANUAL(S) PRIOR TO INSTALLATION AND OPERATION. DELIVER THE MANUAL(S) TO ALL OPERATORS. FAILURE TO OPERATE THIS EQUIPMENT AS DIRECTED MAY CAUSE INJURY OR DEATH.

#### IMPORTANT NOTE:

BENDPAK LIFTS ARE SUPPLIED WITH CONCRETE FASTENERS MEETING THE CRITERIA AS PRESCRIBED BY ASTM E488 - 96(2003). LIFT BUYERS ARE RESPONSIBLE FOR ANY SPECIAL REGIONAL STRUCTURAL AND/OR SEISMIC ANCHORING REQUIREMENTS SPECIFIED BY ANY OTHER AGENCIES AND/OR CODES SUCH AS THE UNIFORM BUILDING CODE (UBC) AND/OR INTERNATIONAL BUILDING CODE (IBC).



INTERNAL BAR CODE - FOR FACTORY AUDIT ONLY 34086

BPK	STYOT	P20KVR	X18576	HVY DTY/ GVR
				832

THE MANUFACTURE, USE, SALE OR IMPORT OF THIS PRODUCT MAY BE SUBJECT TO ONE OR MORE UNITED STATES PATENTS, OR PENDING APPLICATIONS, OWNED BY BENDPAK, INC.

ENGINEERED BY BENDPAK INC USA

MADE IN CHINA

SIZE: 5.125" L x 5.125" W (130mm x 130mm)

### 2. Vendor Information

Approved Vendor	Vendor Part #	Contact #	Preferred Vendor
1)			

## PART SPECIFICATION FORM

<b>BENDPAK Number:</b>	5905555
<b>MRP Description:</b>	2-POST SAFETY DECAL
<b>Date:</b>	06/18/2013
<b>ECO :</b>	00605

### 1. Engineering Specification

**Application:**

2-POST SAFETY DECAL

**Detailed Description:**



**SIZE:** 28.5" L x 4" W (724mm x 100mm)

### 2. Vendor Information

Approved Vendor	Vendor Part #	Contact #	Preferred Vendor
1)			

## PART SPECIFICATION FORM

<b>BENDPAK Number:</b>	5905650
<b>MRP Description:</b>	MAX CAP NRTL DANGER 9K
<b>Date:</b>	05/06/2013
<b>ECO :</b>	00593

### 1. Engineering Specification

**Application:**

LIFT CAPACITY STICKER FOR CE LIFTS

**Detailed Description:**



SIZE: 3.25" L x 4.5" W (82mm x 114mm)

### 2. Vendor Information

Approved Vendor	Vendor Part #	Contact #	Preferred Vendor
1)			

## PART SPECIFICATION FORM


<b>BENDPAK Number:</b>	5905940
<b>MRP Description:</b>	PRODUCT DATA LABEL
<b>Date:</b>	05/06/2013
<b>ECO :</b>	00593

### 1. Engineering Specification

**Application:**

PRODUCT DATA LABEL

**Detailed Description:**



SANTA PAULA, CA USA  
 WWW.BENDPAK.COM

---

LIFT TYPE: SURFACE MOUNT CAP: MED/HVY DTY MFG. BPK SEE DATA PLATE FOR PRODUCT DETAILS  
 POWER: ELECTRIC/HYDRAULIC INSTALLATION - SEE OWNERS GUIDE OR CONTACT FACTORY

---

SAFETY INSTRUCTIONS: IF ATTACHMENTS, ACCESSORIES OR CONFIGURATION MODIFYING COMPONENTS THAT ARE LOCATED IN THE LOAD PATH, AFFECT OPERATION OF THE LIFT, AFFECT THE LIFT ELECTRICAL LISTING OR AFFECT INTENDED VEHICLE ACCOMMODATION ARE USED ON THIS LIFT AND, IF THEY ARE NOT CERTIFIED FOR USE ON THIS LIFT, THEN THE CERTIFICATION OF THIS LIFT SHALL BECOME NULL AND VOID. CONTACT THE PARTICIPANT FOR INFORMATION PERTAINING TO CERTIFIED ATTACHMENTS, ACCESSORIES OR CONFIGURATION MODIFYING COMPONENTS.

BENDPAK LIFTS ARE SUPPLIED WITH CONCRETE FASTENERS MEETING THE CRITERIA AS PRESCRIBED BY ASTM E488 - 96(2003). LIFT BUYERS ARE RESPONSIBLE FOR ANY SPECIAL REGIONAL STRUCTURAL AND/OR SEISMIC ANCHORING REQUIREMENTS SPECIFIED BY ANY OTHER AGENCIES AND/OR CODES SUCH AS THE UNIFORM BUILDING CODE (UBC) AND/OR INTERNATIONAL BUILDING CODE (IBC).

THE MANUFACTURE, USE, SALE OR IMPORT OF THIS PRODUCT MAY BE SUBJECT TO ONE OR MORE UNITED STATES PATENTS, OR PENDING APPLICATIONS, OWNED BY BENDPAK, INC.  
 DO NOT REMOVE      ENGINEERED BY BENDPAK INC. USA      MADE IN CHINA

SIZE: 2.3" L x 4.5" W (58mm x 114mm)

### 2. Vendor Information

Approved Vendor	Vendor Part #	Contact #	Preferred Vendor
1)			



## PART SPECIFICATION FORM

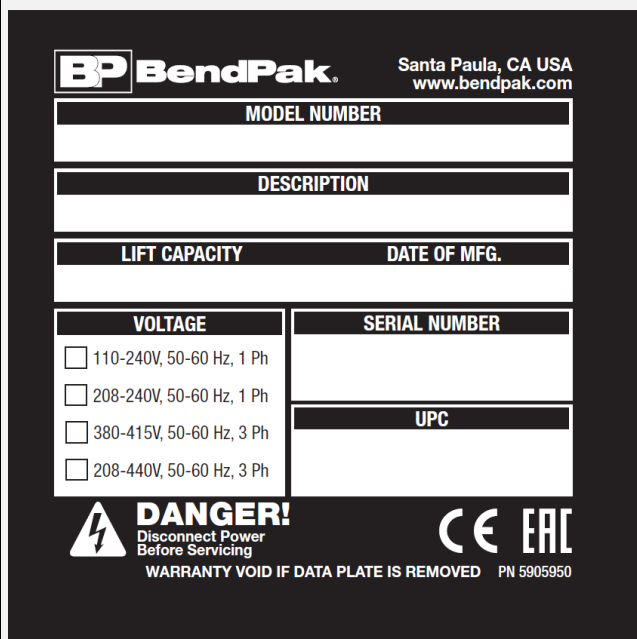
<b>BENDPAK Number:</b>	5905950
<b>MRP Description:</b>	5905950-2017_SERIAL_TAG-A
<b>Date:</b>	05/24/2017
<b>ECO :</b>	00829

### 1. Engineering Specification

**Application:**

DATA SERIAL TAG 2 POST CE

**Detailed Description:**



The data plate template includes the following fields and labels:

- BP BendPak®** Santa Paula, CA USA www.bendpak.com
- MODEL NUMBER**
- DESCRIPTION**
- LIFT CAPACITY** **DATE OF MFG.**
- VOLTAGE**
  - ☐ 110-240V, 50-60 Hz, 1 Ph
  - ☐ 208-240V, 50-60 Hz, 1 Ph
  - ☐ 380-415V, 50-60 Hz, 3 Ph
  - ☐ 208-440V, 50-60 Hz, 3 Ph
- SERIAL NUMBER**
- UPC**
- DANGER!** Disconnect Power Before Servicing
- WARRANTY VOID IF DATA PLATE IS REMOVED** PN 5905950
- CE EAC** certification marks

SIZE: 3" L x 3" W  
(75mm x 75mm)

### 2. Vendor Information (Or for Reference)

Approved Vendor	Vendor Part #	Contact #	Preferred Vendor
1)			
2)			
OR BENDPAK ENGINEERING APPROVED EQUIVALENT			

# 2 Post Lifts (ALI) Packaging

**BP BendPak**

Santa Paula, CA USA  
www.bendpak.com

MODEL NUMBER
SERIAL NUMBER

PN 5905285

**PEEL OFF INVENTORY LABEL**

MODEL NUMBER
SERIAL NUMBER

PN 5905285

Do not remove back sheet of this portion to prevent from sticking completely as shown in image.



MFD. BY BENDPAK INC.

LIFT TYPE: SURFACE MOUNT	CAPACITY: MED/HVY DTY
POWER: ELECTRIC/HYDRAULIC	ANCHORS: AS EQUIPPED
INSTALLATION – SEE OWNERS GUIDE OR CONTACT FACTORY	

**SHIPPING DAMAGE CLAIMS**  
WHEN THIS EQUIPMENT IS SHIPPED, TITLE PASSES TO THE PURCHASER UPON RECEIPT FROM THE CARRIER. CONSEQUENTLY, CLAIMS FOR THE MATERIAL DAMAGED IN SHIPMENT MUST BE MADE BY THE PURCHASER AGAINST THE TRANSPORTATION COMPANY AT THE TIME SHIPMENT IS RECEIVED.

**PLEASE READ ALL OPERATORS/USERS MANUAL(S) PRIOR TO INSTALLATION AND OPERATION. UNDERSTAND AND COMPREHEND THE FULL CONTENTS OF EACH MANUAL(S) PRIOR TO INSTALLATION AND OPERATION. DELIVER THE MANUAL(S) TO ALL OPERATORS. FAILURE TO OPERATE THIS EQUIPMENT AS DIRECTED MAY CAUSE INJURY OR DEATH.**

**IMPORTANT NOTE:**  
BENDPAK LIFTS ARE SUPPLIED WITH CONCRETE FASTENERS MEETING THE CRITERIA AS PRESCRIBED BY ASTM E488 – 96(2003). LIFT BUYERS ARE RESPONSIBLE FOR ANY SPECIAL REGIONAL STRUCTURAL AND/OR SEISMIC ANCHORING REQUIREMENTS SPECIFIED BY ANY OTHER AGENCIES AND/OR CODES SUCH AS THE UNIFORM BUILDING CODE (UBC) AND/OR INTERNATIONAL BUILDING CODE (IBC).

INTERNAL BAR CODE – FOR FACTORY AUDIT ONLY 34086

BPK	STYOT	P20KVR	X18576	HVY DTY/ GVR
				832

THE MANUFACTURE, USE, SALE OR IMPORT OF THIS PRODUCT MAY BE SUBJECT TO ONE OR MORE UNITED STATES PATENTS, OR PENDING APPLICATIONS, OWNED BY BENDPAK, INC.

ENGINEERED BY BENDPAK INC USA

MADE IN CHINA

Serial\_Tag\_New-2015\_Peel\_Off-5905285-REV.jpg:

Size: 3"W x 3"H

Material: 2 Mil. Matte Silver Polyester (Flex-PSE)

Print using thermal transfer printer with resin ribbon

Ink: 1 Color-Black

Manufacturer Packaging Label:

Size: 5"W x 5"H

Material: White adhesive paper

Ink: U.V. protected CMYK 2/C Process

Print Process: Offset Lithography - 200 line-screen or 300 p.p.i. for digital

# 2-Post Lifts (ALI) Product Decal Positioning



## BPK Post Lift Decal.pdf

Material: Clear Adhesive PET

Size: 4.25"W x 38"H

Thickness: 4 Mil

Finish: Polished

Ink: U.V. protected, Opaque White

Print Process: Silk Screen, 85 line-screen (**Yellow color in file represents what should be clear PET material and SHOULD NOT print as Yellow ink. White area in file represents Opaque White ink.**)

Lamination: Clear-gloss over-laminate for abrasion, chemical, and ultra violet protection

**Total of 4**

**CLEAR ADHESIVE PET  
DOES NOT PRINT YELLOW**

## B

**IMPORTANT**  
OPERATION / MAINTENANCE  
INSTRUCTIONS - PLEASE READ

**DANGER**  
  
Long-wheelbase vehicles can damage lift and/or cause personal harm or injury to operator if loaded incorrectly. All vehicles MUST be positioned on lift with CENTER OF GRAVITY midway between adapters.

**CAUTION**  
  
Never lift any vehicle in any manner with FEWER than (4) arms. Rated capacity of each lift arm is no greater than (1/4) of the overall lifting capacity.

**WARNING**  
**USE PROPER ADAPTERS**  
Do not attempt to lift trucks or other frame type vehicles with standard rubber contact pads. NEVER use lift with missing or damaged rubber contact pads. ALWAYS REPLACE rubber contact pads when worn or damaged. Contact BendPak or your distributor for product information.

**FRAME CRADLE ADAPTERS**  
SKU# 521000  
Required for use when lifting trucks, vans or other frame vehicles that require additional stability.

**SUV & VAN ADAPTERS**  
  
54 mm SKU# 5740007  
63 mm SKU# 5740002  
132 mm SKU# 5760103  
Recommended for trucks, SUVs and vans that require additional lifting height.

**STEEL LIFT PADS**  
SKU# 5210000  
Steel lift pads are recommended for additional stability on all vehicles. The flanged edges grip the chassis for an extra-secure hold.

**REPLACEMENT POLYURETHANE TUP PADS™**  
SKU# 5710017  
NEVER use lift with missing or damaged rubber contact pads. ALWAYS REPLACE rubber contact pads when worn or damaged.

**TO PLACE ORDER**  
Visit [www.bendpak.com](http://www.bendpak.com) or dial 1-800-933-9970  
Monday - Friday  
6 a.m. - 4:30 p.m. PST

**WARNING**  
**WIRE ROPE INSPECTION AND MAINTENANCE**  
• Lifting cables should be replaced if wear or damage is evident such as excessive broken strands, kinks, deformities, or areas of heavy abrasion.  
• Wire rope should be maintained in a well-lubricated condition at all times. Wire rope is only fully protected when each wire strand is lubricated both internally and externally. Excessive wear will shorten the life of the wire rope. The factory suggests wire rope lubricant that penetrates to the core of the rope and provides long-term lubrication between each individual strand. In order to make sure that the inner layers of the rope remain well-lubricated, lubrication should be carried out at intervals not exceeding three (3) months during operation.  
• All sheaves and guide rollers in contact with the moving wire rope should be given regular visual checks for surface wear and lubricated to make sure that they run freely. This operation should be carried out at appropriate intervals generally not exceeding three (3) months during operation. For all sheave axles, the factory recommends standard wheel bearing grease. For all sheaves and/or guide rollers, the factory recommends 30-WT gear oil or similar heavy lubricant applied by any method, including pump/spray dispensing, brush, hand and/or swabbing.

**LIFT OPERATION**  
**TO RAISE LIFT**  
✓ Read Operating and Safety manuals before using lift.  
✓ Always lift vehicle according to manufacturer's recommended lifting points.  
✓ Position vehicle between columns. Adjust swing arms so that vehicle is positioned with the center of gravity midway between pads.  
✓ Position lift contact pads at manufacturer's recommended lifting points.  
✓ Use truck adapters as needed. Never exceed 9' of pad/adaptor height.  
✓ Raise lift by pressing RAISE BUTTON on power unit until contact pads make contact with the underside of the vehicle.  
✓ Recheck to make sure vehicle is secure.  
✓ Raise vehicle to desired working height, then press power unit LOWERING HANDLE until lift carriages rest onto nearest safety lock position.  
✓ Maintain visual contact with vehicle and surrounding area at all times while raising lift.  
✓ **STOP IMMEDIATELY** if load shifts or becomes unlevel.  
✓ Always ensure safety locks are engaged before any attempt is made to work on or near vehicle.  
✓ Always ensure lift contact pads are making full contact with vehicle before any attempt is made to work on or near vehicle.  
**TO LOWER LIFT**  
✓ Raise lift by pressing RAISE BUTTON on power unit. Elevate lift at least two inches to allow adequate clearance for the locks to clear.  
✓ Clear safety locks by maintaining pressure on SAFETY LOCK RELEASE HANDLE to its furthest travel.  
✓ Be sure tool trays, stands or personnel are removed from under vehicle.  
✓ Lower vehicle by pressing power unit LOWERING HANDLE until lift has descended completely.  
✓ Maintain visual contact with vehicle and surrounding area at all times while lowering lift.  
✓ **STOP IMMEDIATELY** if load shifts or becomes unlevel.  
✓ Before removing vehicle from lift area, position lift arms to provide unobstructed exit.  
✓ NEVER drive over lift arms.  
**REQUIRED MONTHLY MAINTENANCE**  
✓ ALWAYS consult operation manual for factory-recommended maintenance.  
✓ Check arm restraints for proper operation.  
✓ Check all chain/cable connections, bolts and pins to ensure proper mounting.  
✓ Visually inspect safety locks for proper operation.  
✓ Visually inspect concrete floor. DO NOT USE LIFT if concrete foundation shows signs of deterioration.  
✓ Inspect all anchor bolts and retighten if necessary.  
✓ Check columns for square, plumb positioning.  
✓ Inspect all pivot pins, making sure they are properly secured.  
✓ Check equalizer cable tension - cables must have equal tension. Adjust if necessary.  
✓ Inspect all lift pads, replace if necessary.  
✓ If lift is equipped with overhead cut-off switch, check for proper operation.  
**WARNING!**  
• **DO NOT USE LIFT!**  
1. Never operate the lift with any person or equipment below.  
2. Never exceed rated capacity.  
3. Always ensure safety locks are engaged before any attempt is made to work on or near vehicle.  
4. Never leave lift in an elevated position unless the safety locks are engaged.  
5. Do not permit electric motor to get wet! Motor damage caused by dampness is not covered under warranty.

## XPR-S\_Series\_2-Post\_Safety\_Decal.pdf:

Size: 4.5"W x 35"H

Material: White Vinyl Pressure Sensitive Adhesive

Thickness: 4 Mil

Ink: U.V. protected CMYK 2/C Process

Finish: Polished

Print Process: Offset Lithography - 200 line-screen or 300 p.p.i. for digital

Lamination: Clear-gloss over-laminate for abrasion, chemical, and ultra violet protection

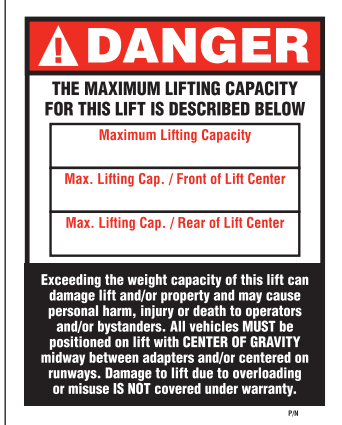
**Place on BACK of Powerside Post**

P/N 5905311

P/N 5905993

# 2-Post Lifts (ALI) Product Decal Positioning

**\*C**



P/N 5905401 - Max Cap. Danger 7k  
P/N 5905402 - Max Cap. Danger 9k  
P/N 5905403 - Max Cap. Danger 10k  
P/N 5905404 - Max Cap. Danger 12k  
P/N 5905405 - Max Cap. Danger 15k  
P/N 5905406 - Max Cap. Danger 18k

**\*Max. Cap. Danger.pdf:**

Size: 4"W x 5"H  
Material: White Vinyl Pressure Sensitive Adhesive  
Thickness: 4 Mil  
Ink: U.V. protected CMYK 2/C Process  
Finish: Polished  
Print Process: Offset Lithography - 200 line-screen or 300 p.p.i. for digital  
Lamination: Clear-gloss over-laminate for abrasion, chemical, and ultra violet protection

**\*D**



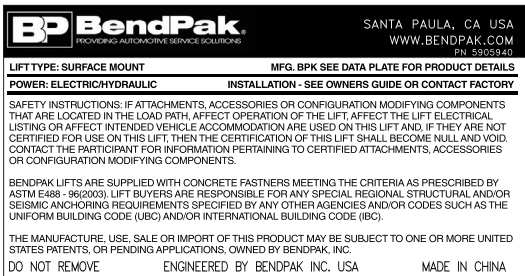
P/N 5905645 - Max Cap. Attention 7k  
P/N 5905650 - Max Cap. Attention 9k  
P/N 5905655 - Max Cap. Attention 10k  
P/N 5905660 - Max Cap. Attention 12k  
P/N 5905670 - Max Cap. Attention 15k  
P/N 5905675 - Max Cap. Attention 18k

**\*Max. Cap. Attention.pdf:**

Size: 4.5"W x 3.25"H  
Material: White Vinyl Pressure Sensitive Adhesive  
Thickness: 4 Mil  
Ink: U.V. protected CMYK 2/C Process  
Finish: Polished  
Print Process: Offset Lithography - 200 line-screen or 300 p.p.i. for digital  
Lamination: Clear-gloss over-laminate for abrasion, chemical, and ultra violet protection

**\*DEPENDS ON LIFT MODEL AND CAPACITY**

**E**



P/N 5905940

**Product\_Data\_Label\_5905940-New.pdf:**

Size: 4.5"W x 2.3"H  
Material: White Vinyl Pressure Sensitive Adhesive  
Thickness: 4 Mil  
Ink: U.V. protected CMYK 2/C Process  
Finish: Polished  
Print Process: Offset Lithography - 200 line-screen or 300 p.p.i. for digital  
Lamination: Clear-gloss over-laminate for abrasion, chemical, and ultra violet protection

**F**



ALI Blue P/N 5905109  
(As a set F, G & H)

(Order Labels from ALI)

**G**



ALI Yellow  
(Order Labels from ALI)

**H**



ALI Orange  
(Order Labels from ALI)



# 2-Post Lifts (ALI) Product Decal Positioning

## PLEASE READ

Internal packing oil may cause the cylinders to bleed oil during start up. This is normal. To extend cylinder and seal life, raise the lift to full height at least once every day.

P/N 5905177

Place on **BOTH** Posts

LR-60\_Warning\_Instructions\_Label.pdf:

Size: 3"W x 1.75"H

Material: White Vinyl Pressure Sensitive Adhesive

Thickness: 4 Mil

Ink: U.V. protected CMYK 2/C Process

Finish: Polished

Print Process: Offset Lithography - 200 line-screen or 300 p.p.i. for digital

Lamination: Clear-gloss over-laminate for abrasion, chemical, and ultra violet protection

## CERTIFIED AUTOMOTIVE LIFT



ALI-Gold-Label-MET-US.pdf

## NOTICE

If attachments, accessories, or configuration modifying components used on this lift are located in the load path and affect operation of the lift, affect the lift electrical listing, or affect intended vehicle accommodation; and if they are not certified for use on this lift, then the certification of this lift shall become null and void. Contact the participant for information pertaining to certified attachments, accessories, or configuration modifying components.

www.autolift.org ©2011 by ALI, Inc. ALI / WLSIA01

ALI\_Notice\_Label.jpg

Size: 3"W x 1.75"H

(Order Labels from ALI)

## BP BendPak

Santa Paula, CA USA  
www.bendpak.com

MODEL NUMBER

DESCRIPTION

LIFT CAPACITY

DATE OF MFG.

VOLTAGE

- ☐ 110-240V, 50-60 Hz, 1 Ph
- ☐ 208-240V, 50-60 Hz, 1 Ph
- ☐ 380-415V, 50-60 Hz, 3 Ph
- ☐ 208-440V, 50-60 Hz, 3 Ph

SERIAL NUMBER

UPC



**DANGER!**  
Disconnect Power  
Before Servicing

WARRANTY VOID IF DATA PLATE IS REMOVED PN 5905951



2015\_Serial\_Tag-B-5905951.pdf:

Size: 3"W x 3"H

Material: 2 Mil. Gloss polyester thermal transfer label with a high performance permanent acrylic adhesive.

Ink: 1 Color-Black

**\*FOR NON-CE APPROVED LIFTS ONLY**

P/N 5905951

## BP BendPak

Santa Paula, CA USA  
www.bendpak.com

MODEL NUMBER

DESCRIPTION

LIFT CAPACITY

DATE OF MFG.

VOLTAGE

- ☐ 110-240V, 50-60 Hz, 1 Ph
- ☐ 208-240V, 50-60 Hz, 1 Ph
- ☐ 380-415V, 50-60 Hz, 3 Ph
- ☐ 208-440V, 50-60 Hz, 3 Ph

SERIAL NUMBER

UPC



**DANGER!**  
Disconnect Power  
Before Servicing

WARRANTY VOID IF DATA PLATE IS REMOVED PN 5905950



2015\_Serial\_Tag-A-5905950.pdf:

Size: 3"W x 3"H

Material: 2 Mil. Gloss polyester thermal transfer label with a high performance permanent acrylic adhesive.

Ink: 1 Color-Black

**\*FOR CE APPROVED LIFTS ONLY**

P/N 5905950

# 2-Post Lifts (ALI) Powerside Views

**BACK OF  
POWERSIDE POST**

**FRONT OF  
POWERSIDE POST**

