

# Service Manual

## SERVICE PARTS & DIAGRAMS

**BENDPAK**

**10APX**

PRODUCT SKU

**5175306**

DRAWING N°

**5260700**

CATEGORY

**Two Post Lift**

VER. C

**Rev. B**

DATE

**06.07.2023**

**BendPak.**

This guide is a troubleshooting reference used for maintaining and servicing your Bend Pak product. It provides comprehensive information on identifying serviceable parts and components and assists in troubleshooting problems and performing assembly /disassembly procedures.



### **BendPak, Inc. Corporate Office**

1645 Lemonwood Drive  
Santa Paula, CA 93060 USA  
Toll Free US/Canada: 1-800-253-2363  
Fax: 1-805-933-9160  
info@bendpak.com

### **Customer Service Desk / Warranty**

Customer Service Representatives  
Office Tel: 1-805-933-9970  
Toll Free US/Canada: 1-800-253-2363  
Fax: 1-805-933-9160  
customerservice@bendpak.com

### **Parts Orders**

Customer Service Representatives  
Office Tel: 1-805-933-9970  
Toll Free US/Canada: 1-800-253-2363  
Fax: 1-805-933-9160  
parts@bendpak.com

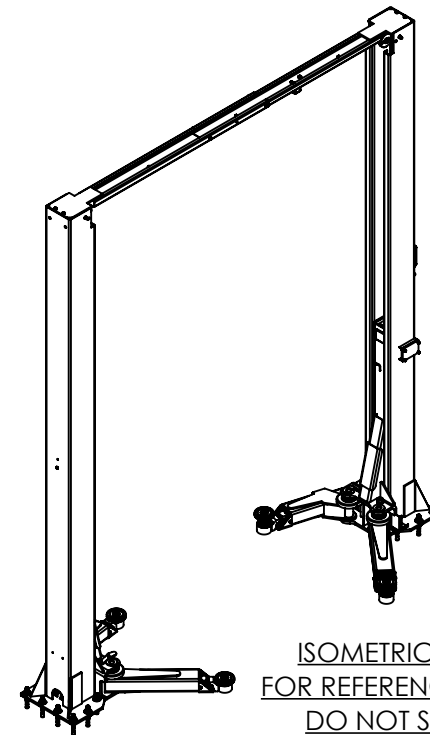
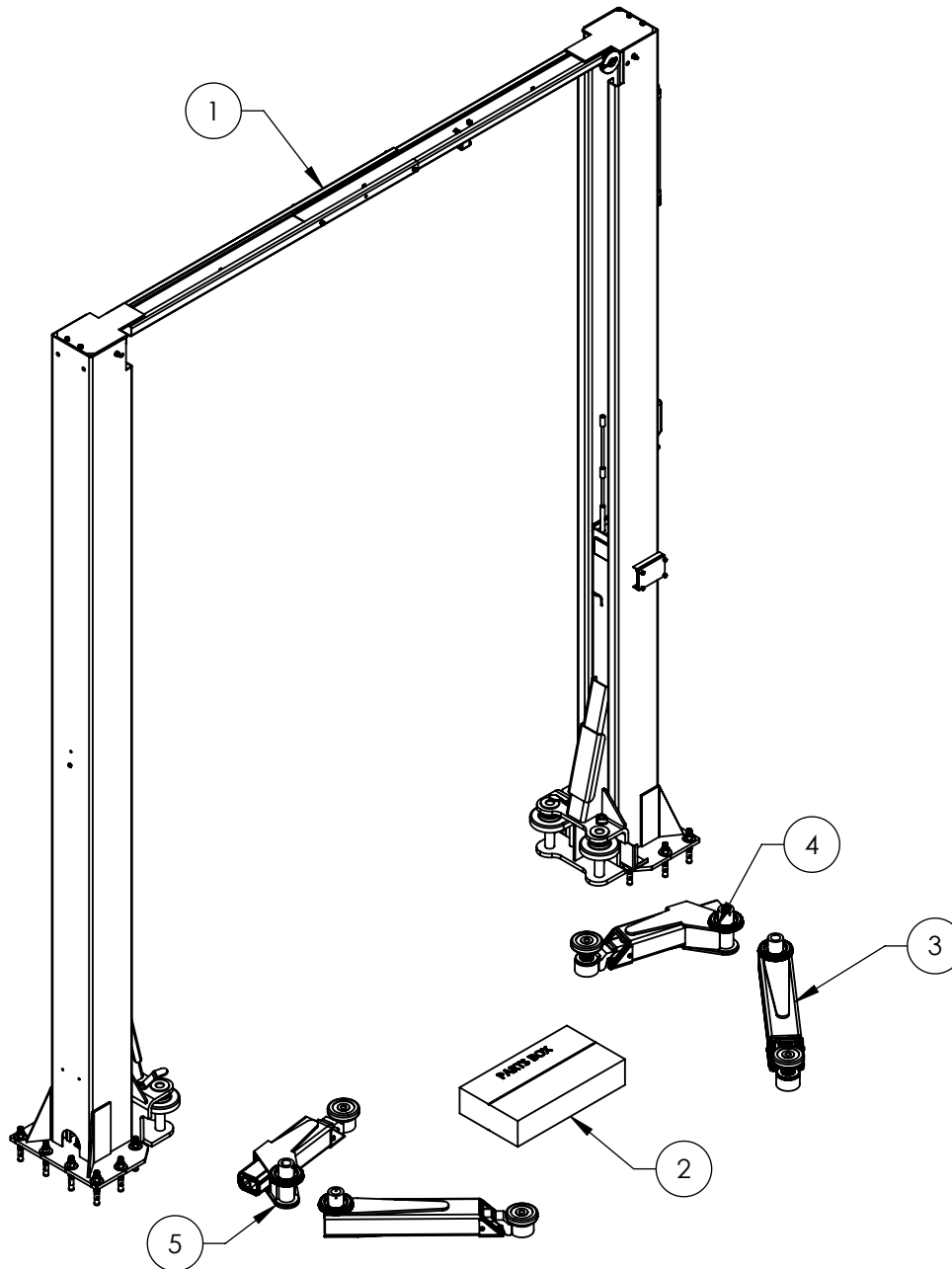
### **Domestic Sales & Service**

USA Sales Representatives  
Office Tel: 1-805-933-9970  
Toll Free US/Canada: 1-800-253-2363  
Fax: 1-805-933-9160  
sales@bendpak.com

### **International Sales & Service**

Office Tel: 1-805-933-9970  
Exports Dept: 1-805-933-9970 EXT. 192  
Ext. Toll Free US/Canada: 1-800-253-2363  
Fax: 1-805-933-9160  
bpkexports@bendpak.com

REVISION				
REV	DESCRIPTION	DATE	EDITED BY	ECO#
A	PRODUCTION RELEASE, DERIVED FROM 5260679	04/25/2023	TM	01488
B	UPDATED BOM REVISIONS	06/01/2023	TM	01492



ISOMETRIC VIEW  
FOR REFERENCE ONLY  
DO NOT SCALE

**NOTE: UNLESS OTHERWISE SPECIFIED.**

1. REFER TO MODEL FOR ADDITIONAL INFORMATION
2. SEE COLORS & GRAPHICS FOR LABEL PLACEMENT
3. SEE SHIPPING INSTRUCTIONS FOR FINAL PACKAGING

ITEM NO	PART NUMBER	DESCRIPTION	QTY	REV
1	5245249	10APX LIFT SUPERSTRUCTURE	1	L
2	5250346	10APX PARTS BOX	1	F
3	5216216	10AP TRIPLE TELESOPING ARM ASSEMBLY, LONG	2	B
4	5216217	10AP TRIPLE TELESOPING ASYMMETRIC ARM ASSEMBLY, LEFT	1	B
5	5216218	10AP TRIPLE TELESOPING ASYMMETRIC ARM ASSEMBLY, RIGHT	1	B

DO NOT SCALE DRAWING

DIMENSIONS ARE IN MM



NAME  
TM  
DATE  
04/25/2023

CHECKED

THIRD ANGLE PROJECTION



PROPRIETARY AND CONFIDENTIAL  
THE INFORMATION CONTAINED IN THIS DRAWING IS THE SOLE PROPERTY OF BENDPAK INC. ANY REPRODUCTION IN PART OR AS A WHOLE WITHOUT THE WRITTEN PERMISSION OF BENDPAK INC. IS PROHIBITED.

**BendPak**  
1645 LEMONWOOD DR.  
SANTA PAULA, CA 93060

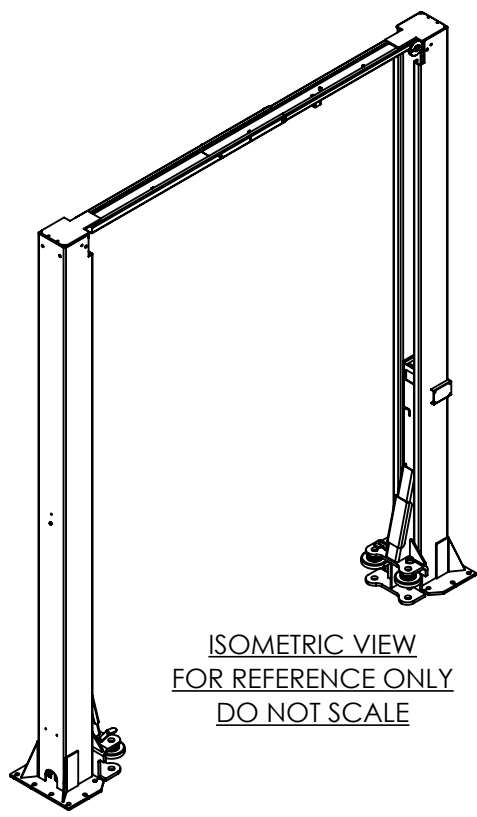
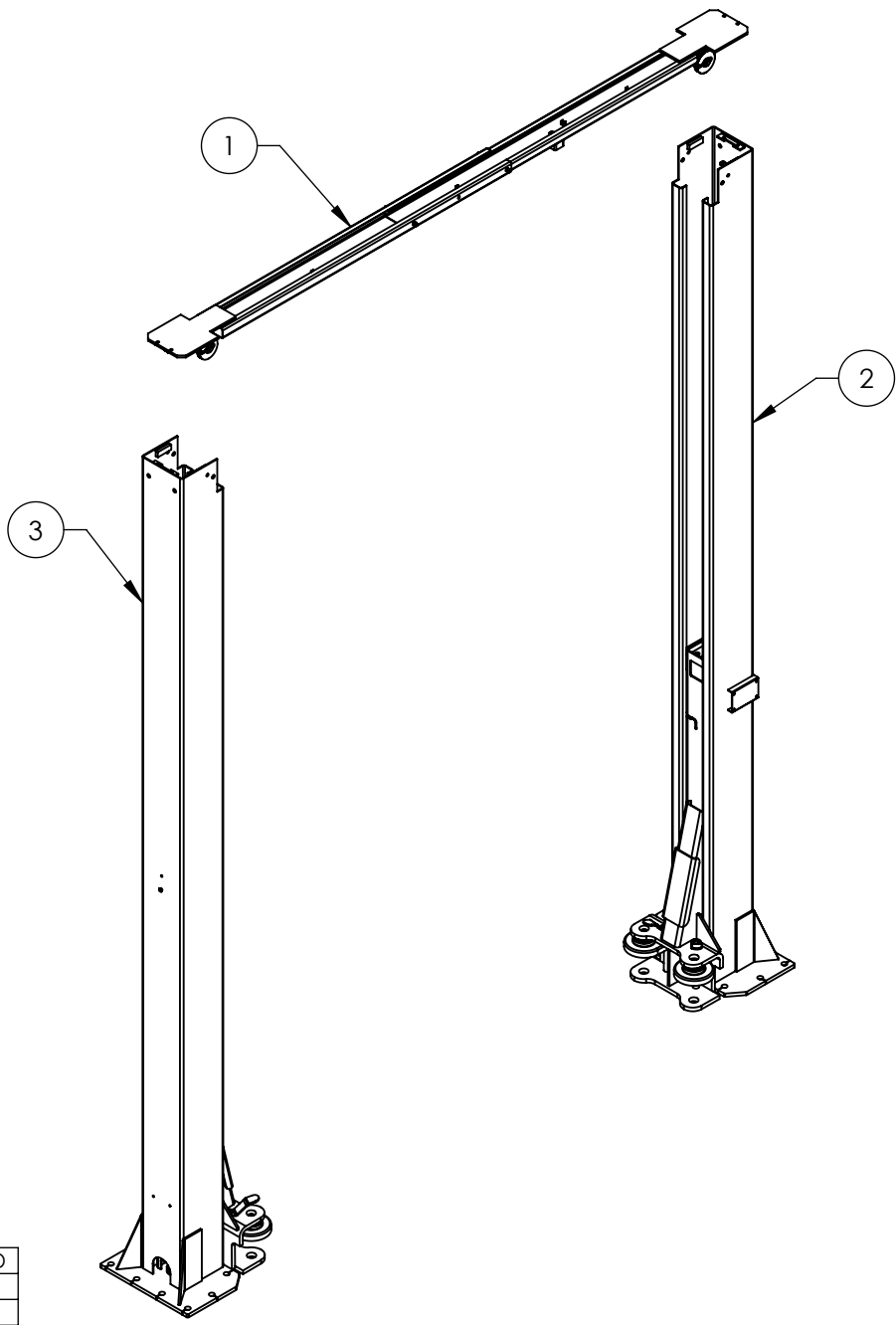
TITLE: 10APX PRODUCTION  
LIFT VER C

SIZE DWG. NO. REV  
A 5260700 B

SCALE: 1:30

SHEET 1 OF 3

REVISION				
REV	DESCRIPTION	DATE	EDITED BY	ECO#
J	UPDATED BOM REVISION	12/12/2022	TM	01460
K	UPDATED BOM REVISION	01/31/2023	CA	01467
L	UPDATED BOM REVISION	04/20/2023	TM	01488



ISOMETRIC VIEW  
FOR REFERENCE ONLY  
DO NOT SCALE

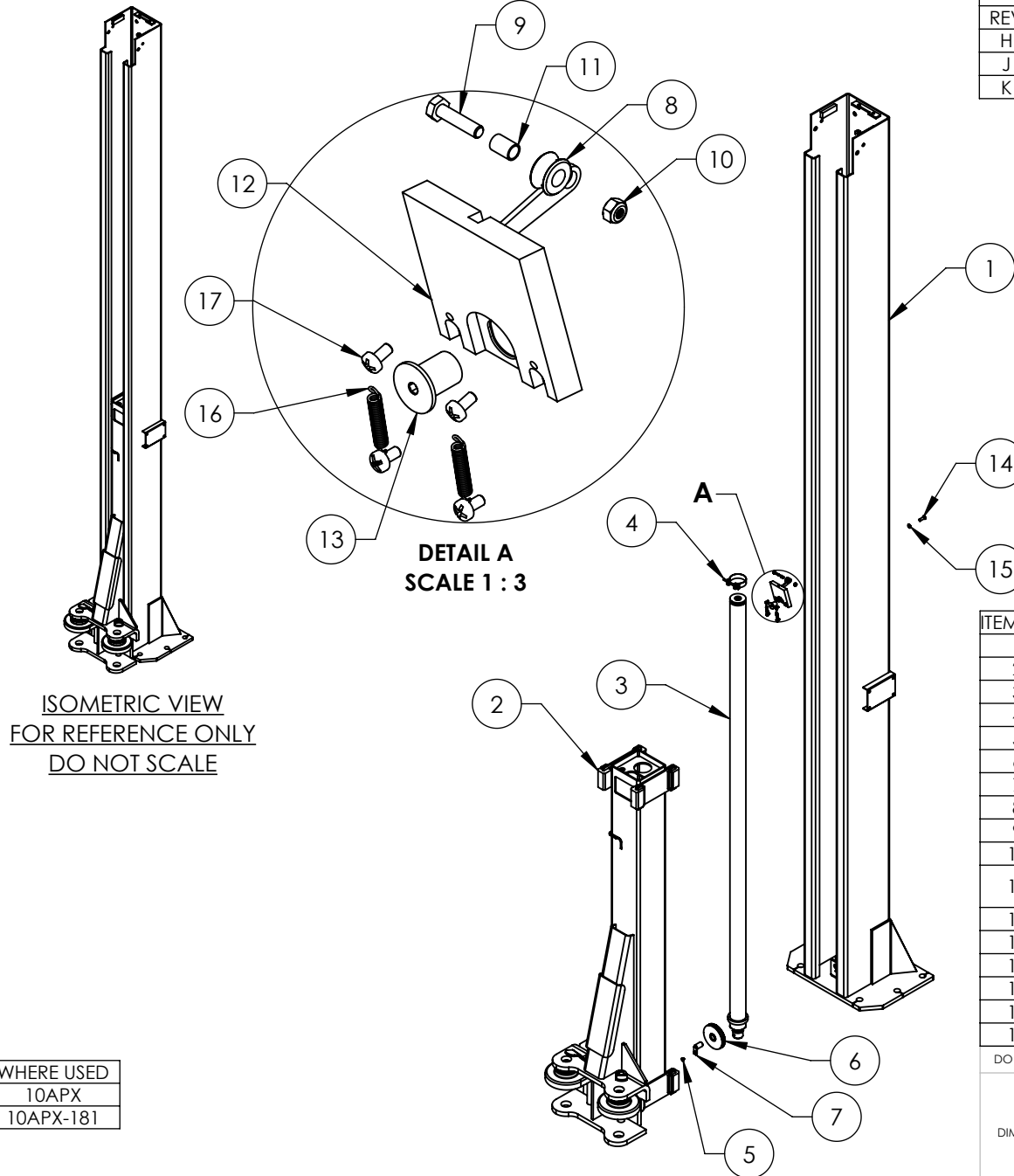
WHERE USED
10APX
10APX-181

**NOTE: UNLESS OTHERWISE SPECIFIED.**  
 1. REFER TO MODEL FOR ADDITIONAL INFORMATION  
 2. SEE SHIPPING INSTRUCTIONS FOR FINAL PACKAGING

NEXT ASSEMBLY
5260700
5260701

ITEM NO	PART NUMBER	DESCRIPTION	QTY	REV
1	5216182	10AP TOP TROUGH ASSEMBLY	1	C
2	5216130	10APX POWER SIDE POST ASSEMBLY	1	K
3	5216131	10APX OFF SIDE POST ASSEMBLY	1	K

DO NOT SCALE DRAWING	NAME	DATE	 1645 LEMONWOOD DR. SANTA PAULA, CA 93060
	DRAWN	CA 04/05/2022	
	CHECKED	OR 04/28/2023	
DIMENSIONS ARE IN MM		THIRD ANGLE PROJECTION	TITLE: 10APX LIFT SUPERSTRUCTURE SIZE DWG. NO. A 5245249 SCALE: 1:30
		PROPRIETARY AND CONFIDENTIAL THE INFORMATION CONTAINED IN THIS DRAWING IS THE SOLE PROPERTY OF BENDPAK INC. ANY REPRODUCTION IN PART OR AS A WHOLE WITHOUT THE WRITTEN PERMISSION OF BENDPAK INC. IS PROHIBITED.	REV L SHEET 1 OF 1



ISOMETRIC VIEW  
FOR REFERENCE ONLY  
DO NOT SCALE

WHERE USED
10APX
10APX-181

**NOTE: UNLESS OTHERWISE SPECIFIED.**

1. REFER TO MODEL FOR ADDITIONAL INFORMATION
2. SEE SHIPPING INSTRUCTIONS FOR FINAL PACKAGING
3. ASSEMBLE ITEMS AS SHOWN

NEXT ASSEMBLY  
5245249

REVISION				
REV	DESCRIPTION	DATE	EDITED BY	ECO#
H	UPDATED BOM REVISION	12/12/2022	TM	01460
J	UPDATED BOM REVISION	01/31/2023	CA	01467
K	UPDATED BOM REVISION	04/20/2023	TM	01488

ITEM NO	PART NUMBER	DESCRIPTION	QTY	REV
1	5601812	10APX POWER SIDE POST WELDMENT	1	D
2	5216181	10APX LIFT HEAD ASSEMBLY	1	F
3	5502725	CYLINDER ASSEMBLY Ø2.0 x 75 - SLOW	1	D
4	5701242	CYLINDER CLAMP ASSY	1	-
5	5530366	FHSS M6 x 1.0 x 8	1	-
6	5575068	10AP 100mm SHEAVE ASSEMBLY	1	B
7	5620143	D2-10, 10AP CABLE SHEAVE PIN WELDMENT	1	C
8	5575074	10/12AP SAFETY CABLE ROLLER	1	A
9	5530756	HHB M6 x 1.0 x 25mm	1	-
10	5535357	NUT M6 x 1.0, NL CL8	1	-
11	5565350	10/12AP/D2/GP/PCL/XPR/ PL-7000 SAFETY SHEAVE SPACER	1	C
12	5601516	10AP POWER SIDE SAFETY WELDMENT	1	E
13	5746494	10/12AP SAFETY PIVOT PIN	1	C
14	5530414	BHSC M8 x 1.25 x 25 CL10.9	1	-
15	5545202	WASHER M8 x Ø15 SL	1	-
16	5540047	EXTENSION SPRING Ø6.35 x 38mm	2	-
17	5530045	BHPS M5 x 0.8 x 10	4	-

DO NOT SCALE DRAWING

NAME DATE

DRAWN CA 04/05/2022

CHECKED OR 04/28/2023

DIMENSIONS ARE IN MM

THIRD ANGLE PROJECTION



PROPRIETARY AND CONFIDENTIAL  
THE INFORMATION CONTAINED IN THIS DRAWING IS  
THE SOLE PROPERTY OF BENDPAK INC. ANY  
REPRODUCTION IN PART OR AS A WHOLE WITHOUT  
THE WRITTEN PERMISSION OF BENDPAK INC. IS  
PROHIBITED.

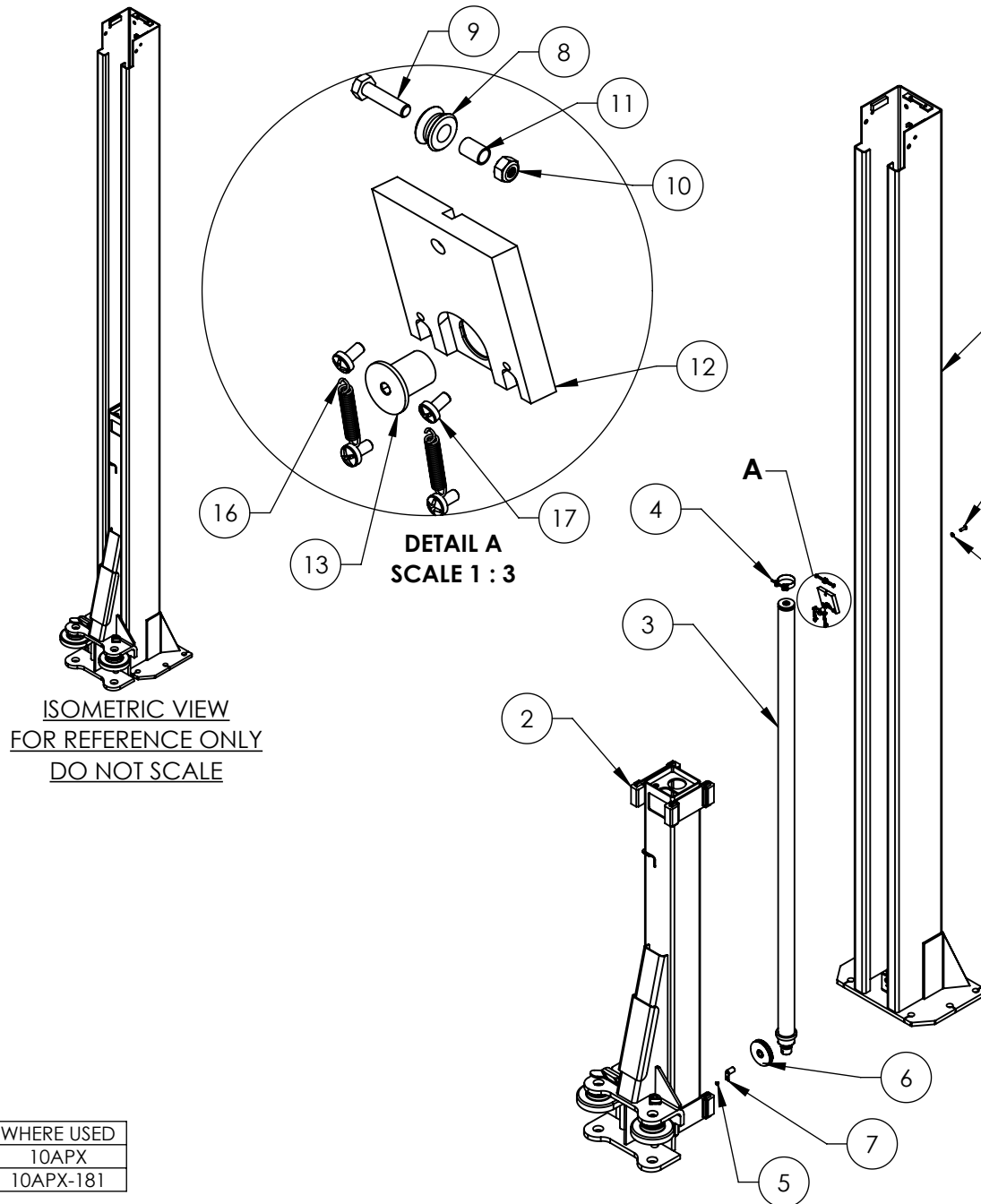
**BendPak**  
1645 LEMONWOOD DR.  
SANTA PAULA, CA 93060

TITLE: 10APX POWER SIDE  
POST ASSEMBLY

SIZE DWG. NO. REV  
**A** 5216130 K

SCALE: 1:25

SHEET 1 OF 1



ISOMETRIC VIEW  
FOR REFERENCE ONLY  
DO NOT SCALE

WHERE USED
10APX
10APX-181

**NOTE: UNLESS OTHERWISE SPECIFIED.**

1. REFER TO MODEL FOR ADDITIONAL INFORMATION
2. SEE SHIPPING INSTRUCTIONS FOR FINAL PACKAGING
3. ASSEMBLE ITEMS AS SHOWN

NEXT ASSEMBLY  
5245249

REVISION				
REV	DESCRIPTION	DATE	EDITED BY	ECO#
H	UPDATED BOM REVISION	12/12/2022	TM	01460
J	UPDATED BOM REVISIONS	01/31/2023	CA	01467
K	UPDATED BOM REVISION	04/20/2023	TM	01488

ITEM NO	PART NUMBER	DESCRIPTION	QTY	REV
1	5601851	10APX OFF SIDE POST WELDMENT	1	B
2	5216181	10APX LIFT HEAD ASSEMBLY	1	F
3	5502725	CYLINDER ASSEMBLY Ø2.0 x 75 - SLOW	1	D
4	5701242	CYLINDER CLAMP ASSY	1	-
5	5530366	FHSS M6 x 1.0 x 8	1	-
6	5575068	10AP 100mm SHEAVE ASSEMBLY	1	B
7	5620143	D2-10, 10AP CABLE SHEAVE PIN WELDMENT	1	C
8	5575074	10/12AP SAFETY CABLE ROLLER	1	A
9	5530756	HHB M6 x 1.0 x 25mm	1	-
10	5535357	NUT M6 x 1.0, NL CL8	1	-
11	5565350	10/12AP/D2/GP/PCL/XPR/ PL-7000 SAFETY SHEAVE SPACER	1	C
12	5737177	10AP OFF SIDE SAFETY BLOCK	1	F
13	5746494	10/12AP SAFETY PIVOT PIN	1	C
14	5530414	BHKS M8 x 1.25 x 25 CL10.9	1	-
15	5545202	WASHER M8 x Ø15 SL	1	-
16	5540047	EXTENSION SPRING Ø6.35 x 38mm	2	-
17	5530045	BHPS M5 x 0.8 x 10	4	-

DO NOT SCALE DRAWING

NAME DATE

DRAWN CA 04/05/2022

CHECKED OR 04/28/2023

DIMENSIONS ARE IN MM

THIRD ANGLE PROJECTION



PROPRIETARY AND CONFIDENTIAL  
THE INFORMATION CONTAINED IN THIS DRAWING IS  
THE SOLE PROPERTY OF BENDPAK INC. ANY  
REPRODUCTION IN PART OR AS A WHOLE WITHOUT  
THE WRITTEN PERMISSION OF BENDPAK INC. IS  
PROHIBITED.

**BendPak**  
1645 LEMONWOOD DR.  
SANTA PAULA, CA 93060

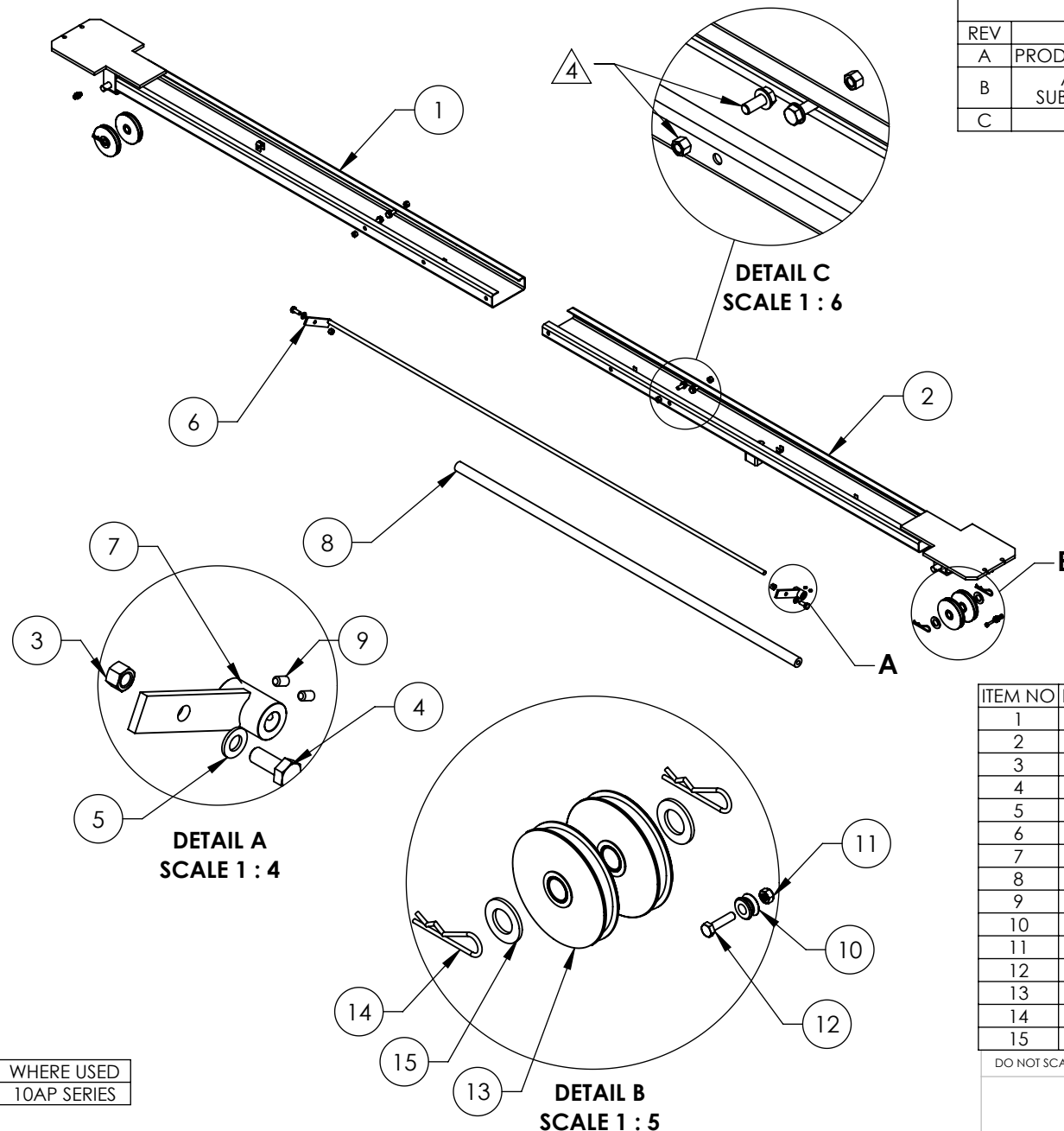
TITLE: 10APX OFF SIDE  
POST ASSEMBLY

SIZE DWG. NO. REV  
**A** 5216131 K

SCALE: 1:25

SHEET 1 OF 1

REVISION				
REV	DESCRIPTION	DATE	EDITED BY	ECO#
A	PRODUCTION RELEASE, DERIVED FROM 5215953	06/07/2022	CA	01417
B	ADDED 5545343, MOVED 5746496 TO SUBWELDMENTS, UPDATED BOM REVISIONS	10/03/2022	TM	01449
C	UPDATED BOM REVISIONS	01/31/2023	CA	01467



**NOTE: UNLESS OTHERWISE SPECIFIED.**

- REFER TO MODEL FOR ADDITIONAL INFORMATION
- SEE SHIPPING INSTRUCTIONS FOR FINAL PACKAGING ASSEMBLY ITEMS AS SHOWN
- NOTE ORIENTATION OF HARDWARE



NOTE ORIENTATION OF HARDWARE

ITEM NO	PART NUMBER	DESCRIPTION	QTY	REV
1	5601854	10AP OUTER TOP TROUGH WELDMENT	1	C
2	5601855	10AP INNER TOP TROUGH WELDMENT	1	C
3	5535013	NUT M10 x 1.5 NL	6	-
4	5530738	HHB M10 x 1.5 x 25	6	-
5	5545341	WASHER M10 x Ø20 FLAT	6	-
6	5600501	XPR-10/10A MICROSWITCH STOP BAR WELDMENT	1	B
7	5620445	XPR TRIP STOP BAR SLIDER WELDMENT	1	C
8	5300815	10AP/D2/XPR STOP BAR CUSHION	1	D
9	5530055	SSS M6x1x10	2	-
10	5575074	10AP SAFETY CABLE ROLLER	2	A
11	5535357	NUT M6 x 1.0, NL CL8	2	-
12	5530756	HHB M6 x 1.0 x 25mm	2	-
13	5575068	10AP 100mm SHEAVE ASSEMBLY	4	B
14	5505020	HAIR PIN 1/8" x 2 7/8"	4	-
15	5545343	WASHER, M20 FLAT	4	-

DO NOT SCALE DRAWING

DIMENSIONS ARE IN MM



NAME  
DATE  
DRAWN  
CA 06/07/2022  
CHECKED  
OR 02/03/2023

THIRD ANGLE PROJECTION



PROPRIETARY AND CONFIDENTIAL  
THE INFORMATION CONTAINED IN THIS DRAWING IS THE SOLE PROPERTY OF BENDPAK INC. ANY REPRODUCTION IN PART OR AS A WHOLE WITHOUT THE WRITTEN PERMISSION OF BENDPAK INC. IS PROHIBITED.

**BendPak**  
1645 LEMONWOOD DR.  
SANTA PAULA, CA 93060

TITLE:  
**10AP TOP TROUGH ASSEMBLY**

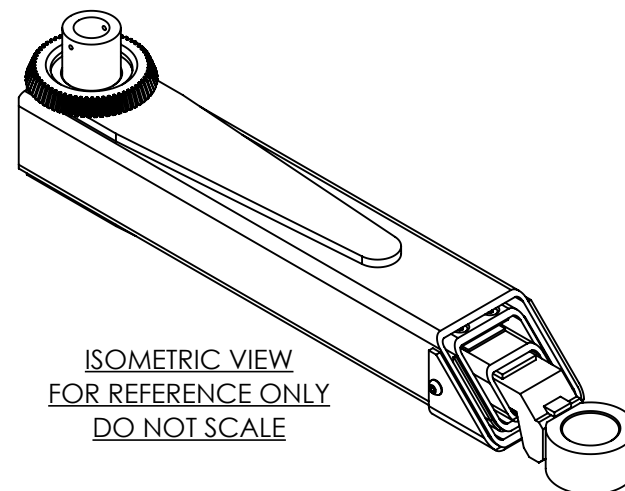
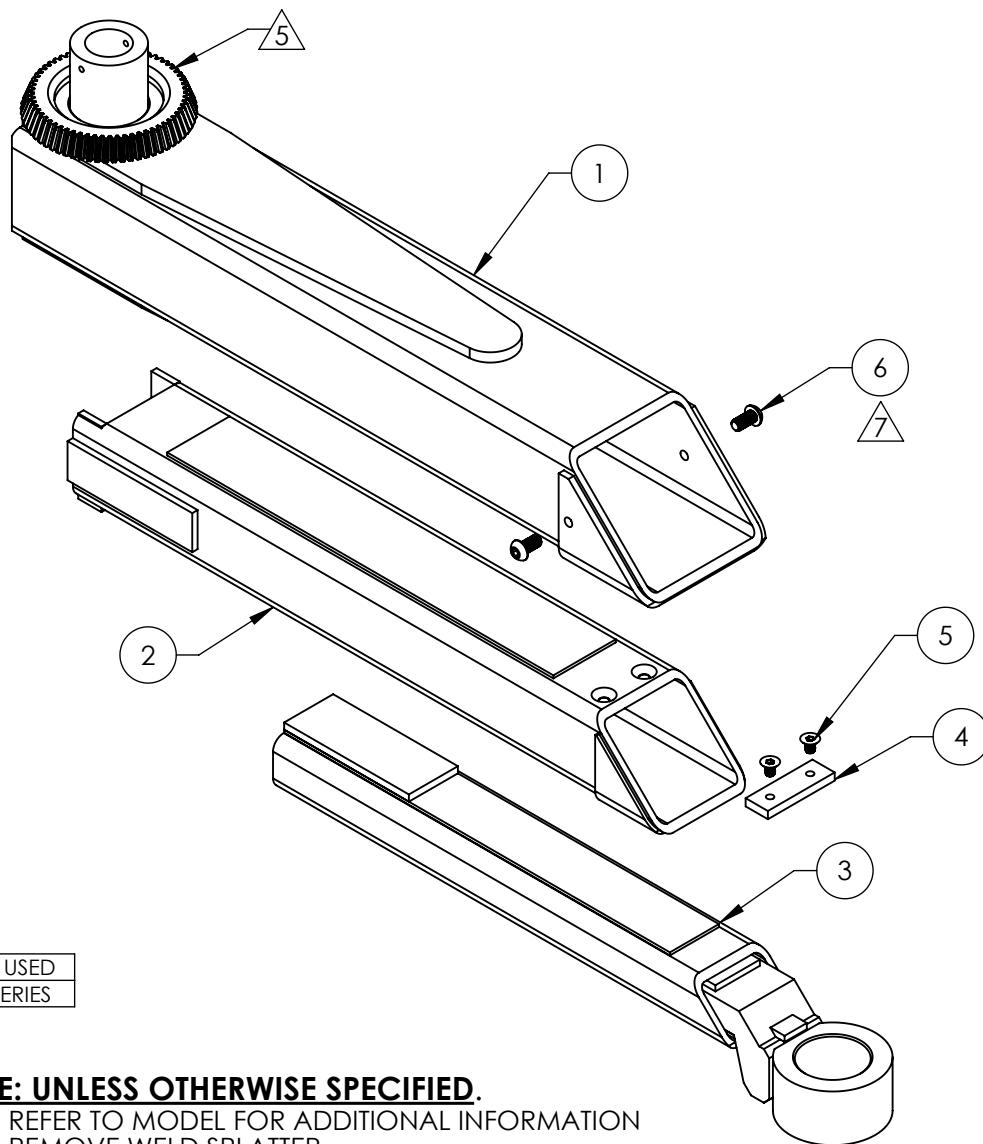
SIZE DWG. NO. REV  
**A** 5216182 C

SCALE: 1:20

SHEET 1 OF 2

NEXT ASSEMBLY
5245246
5245249

REVISION				
REV	DESCRIPTION	DATE	EDITED BY	ECO#
A	PRODUCTION RELEASE, DERIVED FROM 5215957	04/20/2023	TM	01488
B	REPLACED 5530346 WITH 5530479, UPDATED BOM REVISIONS	05/24/2023	TM	01492



ISOMETRIC VIEW  
FOR REFERENCE ONLY  
DO NOT SCALE

WHERE USED
10AP SERIES

# **NOTE: UNLESS OTHERWISE SPECIFIED.**

1. REFER TO MODEL FOR ADDITIONAL INFORMATION
2. REMOVE WELD SPLATTER
3. SEE SHIPPING INSTRUCTIONS FOR FINAL PACKAGING
4. ASSEMBLE ITEMS AS SHOWN
5. MASK TEETH BEFORE PAINTING
6. MASK BORE AND ALL THREADS BEFORE PAINTING
7. APPLY LOCTITE BLUE 242 AND CURE PER MANUFACTURE SPECIFICATION
8. DIMENSIONS SHOWN ARE AFTER WELDING AND PAINTING
9. PAINT YELLOW (RAL-1018) 20% GLOSS

NEXT ASSEMBLY
5260698
5260699
5260700
5260701

ITEM NO	PART NUMBER	DESCRIPTION	QTY	REV
1	5601937	10AP LONG ARM WELDMENT, OUTER SECTION	1	B
2	5601936	10AP LONG ARM WELDMENT, MIDDLE SECTION	1	A
3	5601512	10AP LONG ARM WELDMENT, INNER SECTION	1	F
4	5737188	10/12AP MIDDLE ARM SECTION SLIDE STOP	1	B
5	5530382	FHSS M8 x 1.25 x 12 CL10.9	2	-
6	5530479	BHSS M10 x 1.5 x 20 FT, CL 10.9 B.O.	2	-

DO NOT SCALE DRAWING

DIMENSIONS ARE IN MM



NAME DATE  
DRAWN TM 04/20/2023

CHECKED

THIRD ANGLE PROJECTION



PROPRIETARY AND CONFIDENTIAL  
THE INFORMATION CONTAINED IN THIS DRAWING IS  
THE SOLE PROPERTY OF BENDPAK INC. ANY  
REPRODUCTION IN PART OR AS A WHOLE WITHOUT  
THE WRITTEN PERMISSION OF BENDPAK INC. IS  
PROHIBITED.

**BendPak**  
1645 LEMONWOOD DR.  
SANTA PAULA, CA 93060

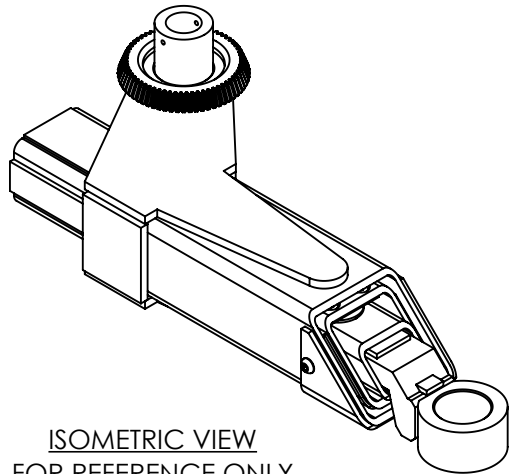
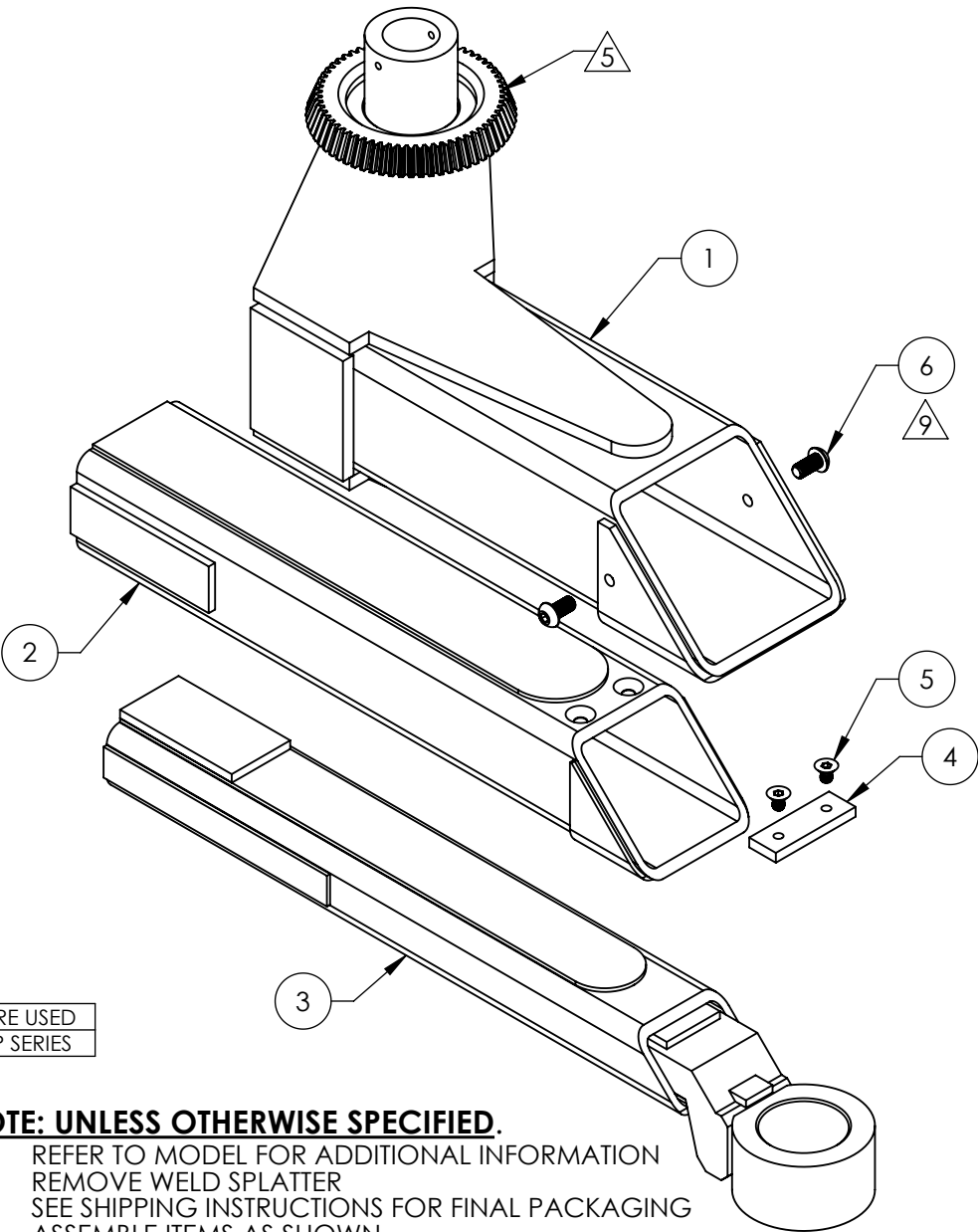
TITLE:  
10AP TRIPLE TELESCOPING  
ARM ASSEMBLY, LONG

SIZE DWG. NO. REV  
A 5216216 B

SCALE: 1:6

SHEET 1 OF 2

REVISION				
REV	DESCRIPTION	DATE	EDITED BY	ECO#
A	PRODUCTION RELEASE, DERIVED FROM 5216088	04/21/2023	TM	01488
B	REPLACED 5530346 WITH 5530 479, UPDATED BOM REVISIONS	06/01/2023	TM	01492



ISOMETRIC VIEW  
FOR REFERENCE ONLY  
DO NOT SCALE

WHERE USED  
10AP SERIES

**NOTE: UNLESS OTHERWISE SPECIFIED.**

1. REFER TO MODEL FOR ADDITIONAL INFORMATION
2. REMOVE WELD SPLATTER
3. SEE SHIPPING INSTRUCTIONS FOR FINAL PACKAGING ASSEMBLY ITEMS AS SHOWN
4. MASK TEETH BEFORE PAINTING
5. MASK BORE AND ALL THREADS BEFORE PAINTING
6. DIMENSIONS SHOWN ARE AFTER WELDING AND PAINTING
7. PAINT YELLOW (RAL-1018) 20% GLOSS
8. APPLY LOCTITE BLUE 242 AND CURE PER MANUFACTURE SPECIFICATION

NEXT ASSEMBLY
5260698
5260699
5260700
5260701

ITEM NO	PART NUMBER	DESCRIPTION	QTY	REV
1	5601938	10AP ASYMMETRIC ARM WELDMENT, OUTER SECTION, LEFT	1	B
2	5601753	10AP ASYMMETRIC ARM WELDMENT, MIDDLE SECTION	1	A
3	5601752	10AP ASYMMETRIC ARM WELDMENT, INNER SECTION	1	B
4	5737188	10/12AP MIDDLE ARM SECTION SLIDE STOP	1	B
5	5530382	FHSS M8 x 1.25 x 12 CL10.9	2	-
6	5530479	BHSS M10 x 1.5 x 20 FT, CL 10.9 B.O.	2	-

DO NOT SCALE DRAWING

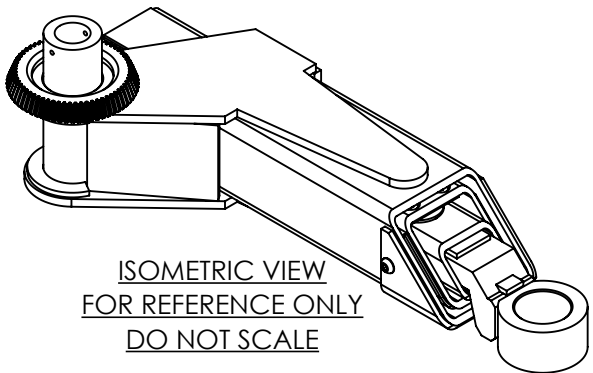
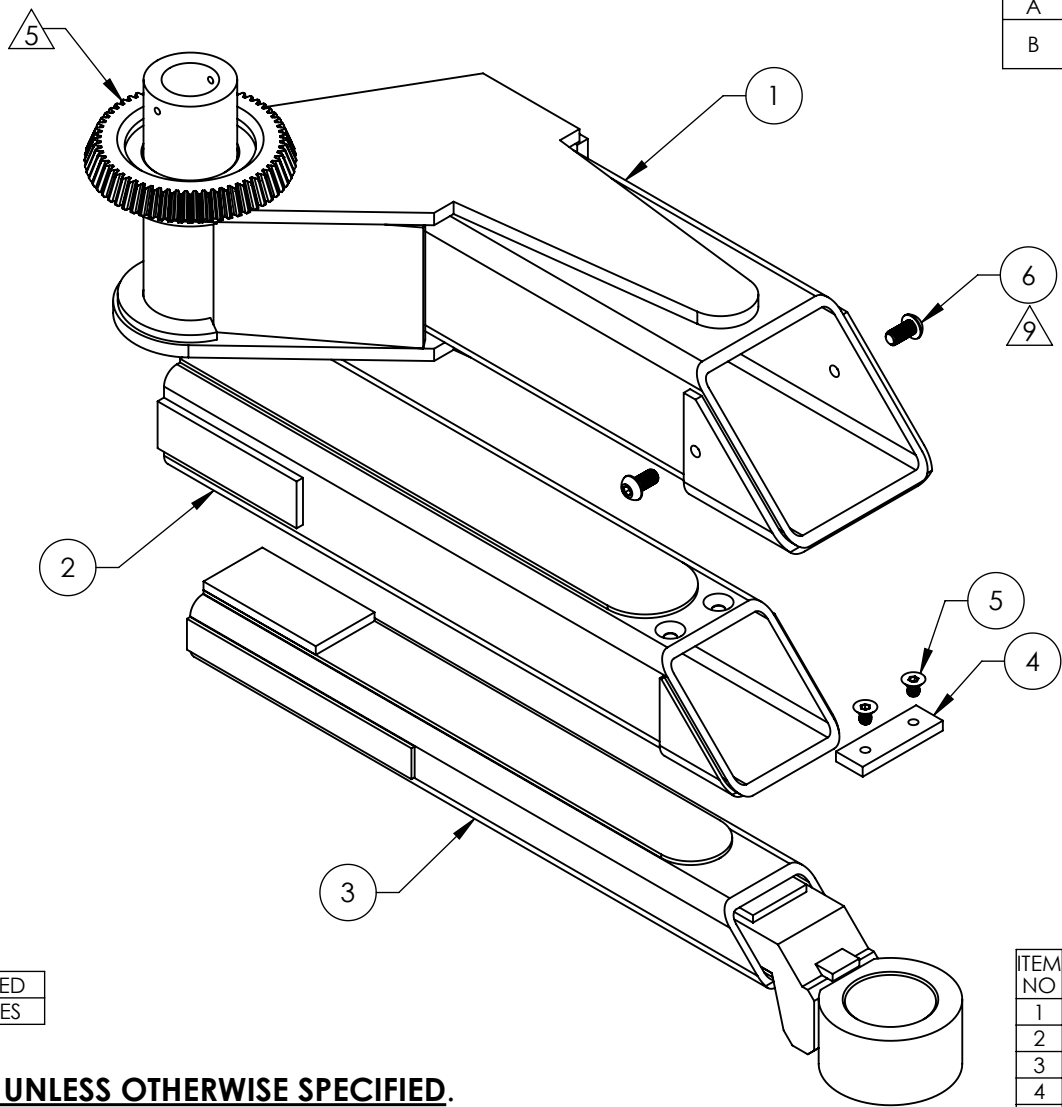
DRAWN TM 04/21/2023  
CHECKED

THIRD ANGLE PROJECTION

PROPRIETARY AND CONFIDENTIAL  
THE INFORMATION CONTAINED IN THIS DRAWING IS THE SOLE PROPERTY OF BENDPAK INC. ANY REPRODUCTION IN PART OR AS A WHOLE WITHOUT THE WRITTEN PERMISSION OF BENDPAK INC. IS PROHIBITED.

**BendPak**  
1645 LEMONWOOD DR.  
SANTA PAULA, CA 93060  
TITLE: 10AP TRIPLE TELESCOPING  
ASYMMETRIC ARM  
ASSEMBLY, LEFT  
SIZE DWG. NO. REV  
**A** 5216217 B  
SCALE: 1:5 SHEET 1 OF 2

REVISION				
REV	DESCRIPTION	DATE	EDITED BY	ECO#
A	PRODUCTION RELEASE, DERIVED FROM 5216089	04/24/2023	TM	01488
B	REPLACED 5530346 WITH 5530 479, UPDATED BOM REVISIONS	06/01/2023	TM	01492



WHERE USED
10AP SERIES

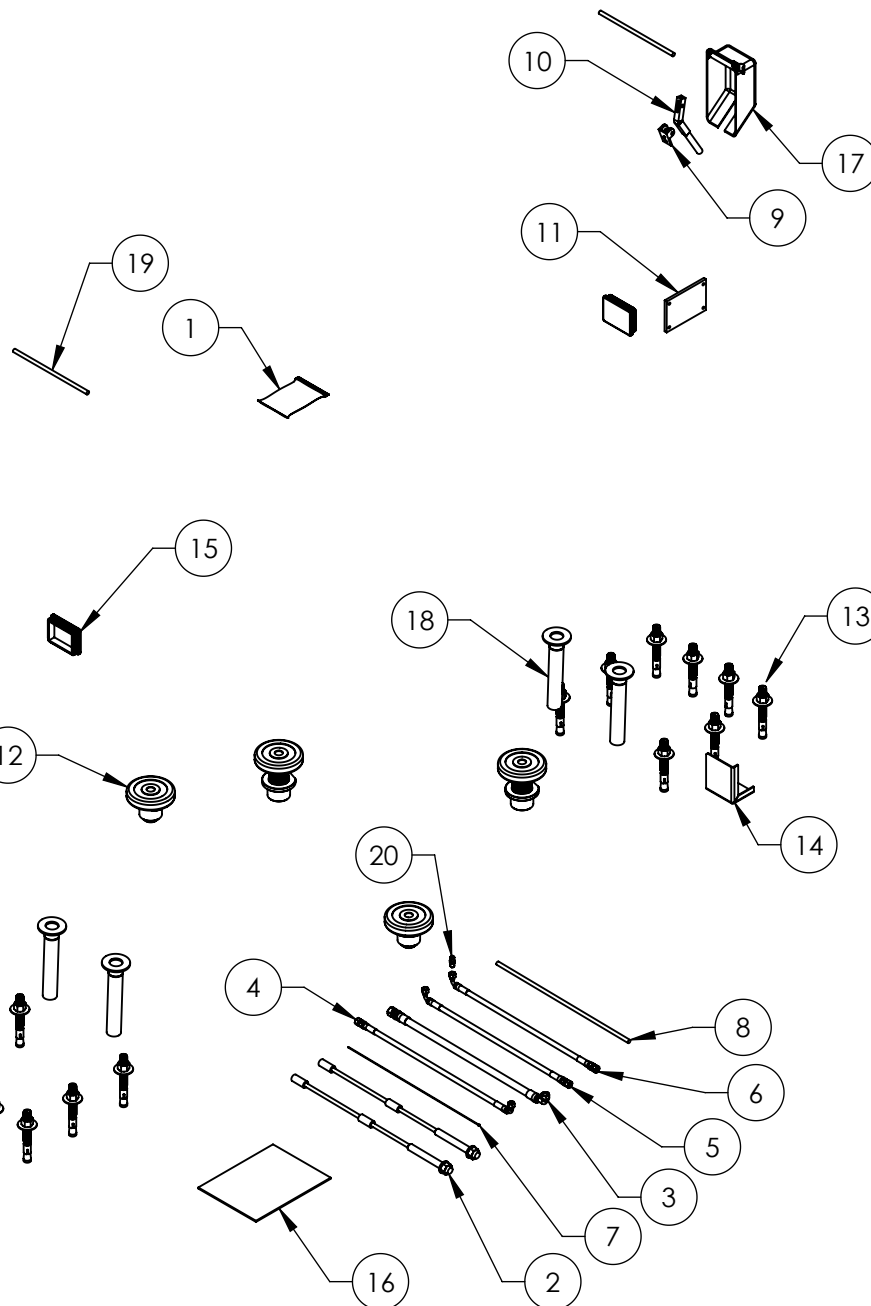
**NOTE: UNLESS OTHERWISE SPECIFIED.**

1. REFER TO MODEL FOR ADDITIONAL INFORMATION
2. REMOVE WELD SPLATTER
3. SEE SHIPPING INSTRUCTIONS FOR FINAL PACKAGING
4. ASSEMBLE ITEMS AS SHOWN
5. MASK TEETH BEFORE PAINTING
6. MASK BORE AND ALL THREADS BEFORE PAINTING
7. DIMENSIONS SHOWN ARE AFTER WELDING AND PAINTING
8. PAINT YELLOW (RAL-1018) 20% GLOSS
9. APPLY LOCTITE BLUE 242 AND CURE PER MANUFACTURE SPECIFICATION

NEXT ASSEMBLY
5260698
5260699
5260700
5260701

ITEM NO	PART NUMBER	DESCRIPTION	QTY	REV
1	5601939	10AP ASYMMETRIC ARM WELDMENT, OUTER SECTION, RIGHT	1	B
2	5601753	10AP ASYMMETRIC ARM WELDMENT, MIDDLE SECTION	1	A
3	5601752	10AP ASYMMETRIC ARM WELDMENT, INNER SECTION	1	B
4	5737188	10/12AP MIDDLE ARM SECTION SLIDE STOP	1	B
5	5530382	FHSS M8 x 1.25 x 12 CL10.9	2	-
6	5530479	BHSS M10 x 1.5 x 20 FT, CL 10.9 B.O.	2	-

DO NOT SCALE DRAWING		NAME	DATE	<p>1645 LEMONWOOD DR. SANTA PAULA, CA 93060</p> <p><b>TITLE: 10AP TRIPLE TELESCOPING ASYMMETRIC ARM ASSEMBLY, RIGHT</b></p>
DRAWN		TM	04/24/2023	
CHECKED				
DIMENSIONS ARE IN MM		THIRD ANGLE PROJECTION		<p>SIZE DWG. NO. REV</p> <p><b>A</b> 5216218 B</p>
				<p>SCALE: 1:5</p>
<p>PROPRIETARY AND CONFIDENTIAL</p> <p>THE INFORMATION CONTAINED IN THIS DRAWING IS THE SOLE PROPERTY OF BENDPAK INC. ANY REPRODUCTION IN PART OR AS A WHOLE WITHOUT THE WRITTEN PERMISSION OF BENDPAK INC. IS PROHIBITED.</p>		<p>SHEET 1 OF 2</p>		



WHERE USED  
10APX

# **NOTE: UNLESS OTHERWISE SPECIFIED.**

1. SEE SHIPPING INSTRUCTIONS FOR FINAL PACKAGING
2. INSERT PARTS BAG INTO PARTS BOX FOR SHIPMENT
3. HOSES AND CABLES SHOWN REPRESENTATIONAL FORM

NEXT ASSEMBLY  
5260700

REVISION				
REV	DESCRIPTION	DATE	EDITED BY	ECO#
D	REPLACED 5595733 WITH 5595754	02/01/2023	CA	01467
E	REPLACED 5570256 WITH 5570174	04/18/2023	TM	01487
F	REMOVED 5746007, 5746192, 5701660, UPDATED BOM REVISION AND NEXT ASSEMBLY	04/20/2023	TM	01488

ITEM NO	PART NUMBER	DESCRIPTION	QTY	REV
1	5174047	10AP SERIES PARTS BAG	1	K
2	5595754	CABLE ASSEMBLY Ø10 x 10790mm DBST	2	A
3	5570278	HYDRAULIC HOSE ASSEMBLY Ø10 x 2522mm SB	1	A
4	5570023	HOSE ASSEMBLY Ø6.4 x 3588mm SB	1	B
5	5570293	HYDRAULIC HOSE ASSEMBLY Ø6.35 x 7264mm SB	1	C
6	5570174	HYDRAULIC HOSE ASSEMBLY Ø6.35 x 285mm SB	1	B
7	5595832	SAFETY CABLE Ø1.8 x 8103mm	1	A
8	5520116	14-4 SJO UL 62 CABLE 300vac	3843mm*	-
9	5700404	10/12AP SAFETY PIVOT HOLDER	1	C
10	5761017	10AP SAFETY HANDLE	1	E
11	5715003	POWER UNIT VIBRATION DAMPENER	1	B
12	5215704	ROUND ADJUSTABLE LIFT PAD ASSEMBLY	4	H
13	5530337	AB 3/4" x 6.3"	16	-
14	5701698	10AP FOOT GUARD	1	C
15	5715196	10/12AP, D2, XPR POLYETHYLENE COVER BLOCK 105 x 80	2	D
16	5900265	10AP INSTALLATION MANUAL	1	-
17	5716072	10AP POWER SIDE PLASTIC SAFETY COVER	1	A
18	5601505	10AP ARM LOCK PIN WELDMENT, Ø38	4	C
19	5746167	DOUBLE THREADED ROD M10 x 1.5 x 275	2	B
20	5550095	FTG NPL -04 JIC x -04 JIC	1	-

DO NOT SCALE DRAWING

DIMENSIONS ARE IN MM



NAME	DATE
DRAWN CA	03/29/2022
CHECKED OR	04/28/2023

THIRD ANGLE PROJECTION



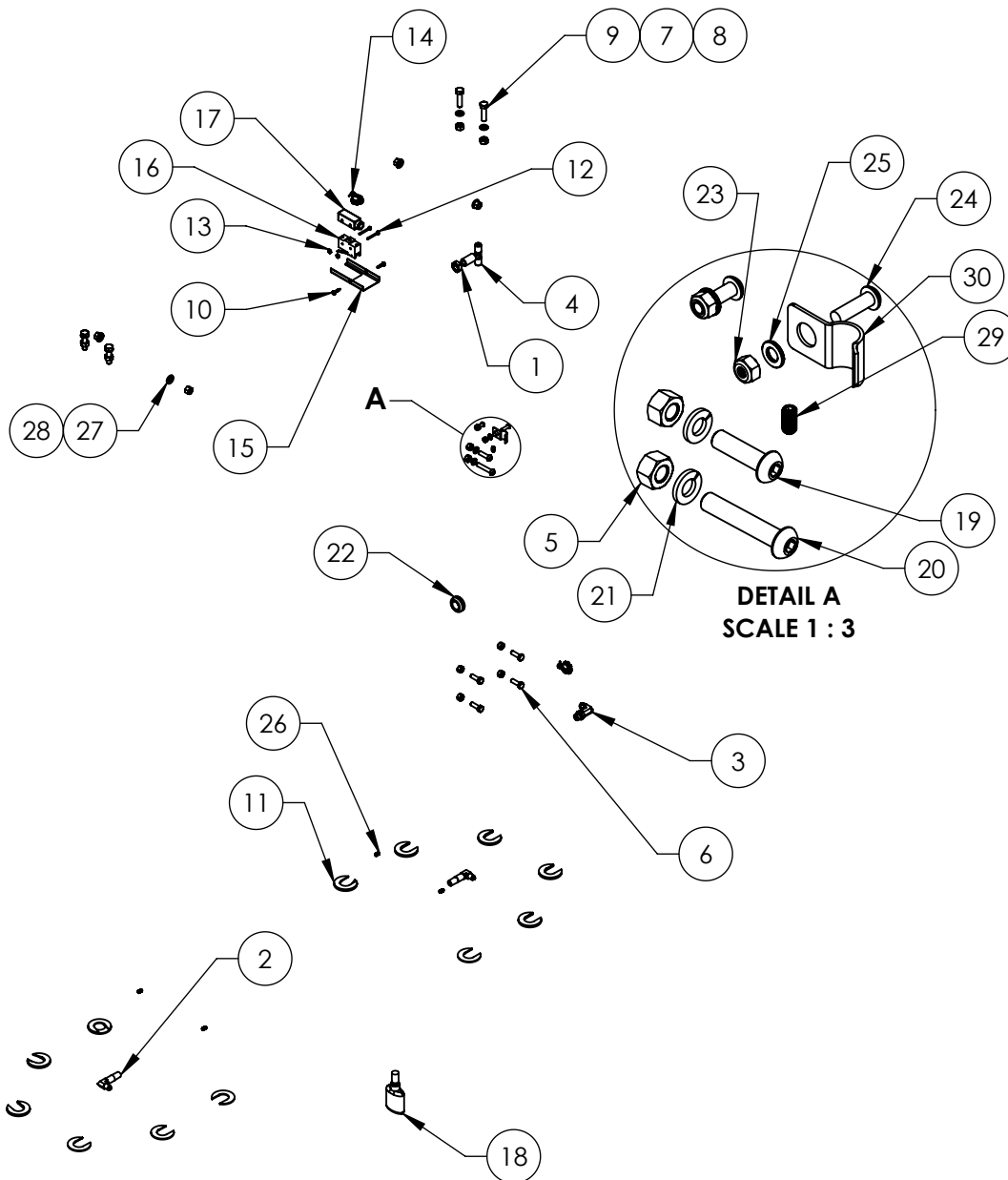
PROPRIETARY AND CONFIDENTIAL  
THE INFORMATION CONTAINED IN THIS DRAWING IS  
THE SOLE PROPERTY OF BENDPAK INC. ANY  
REPRODUCTION IN PART OR AS A WHOLE WITHOUT  
THE WRITTEN PERMISSION OF BENDPAK INC. IS  
PROHIBITED.

**BendPak**  
1645 LEMONWOOD DR.  
SANTA PAULA, CA 93060

TITLE:  
10APX PARTS BOX

SIZE DWG. NO. REV  
**A** 5250346 F

SCALE: 1:20 SHEET 1 OF 1



WHERE USED  
10AP SERIES

**NOTE: UNLESS OTHERWISE SPECIFIED.**

1. SEE SHIPPING INSTRUCTIONS FOR FINAL PACKAGING

NEXT ASSEMBLY
5250343
5250344
5250346
5250347

REVISION				
REV	DESCRIPTION	DATE	EDITED BY	ECO#
H	REMOVED 5550095	06/14/2022	CA	01417
J	ADDED 5505051	12/01/2022	CA	01458
K	REMOVED (4) 5530065, (4) 5535357, & (4) 5545005	04/20/2023	TM	01488

ITEM NO	PART NUMBER	DESCRIPTION	QTY	REV
1	5535022	NUT 9/16"-18 JN	1	-
2	5550113	FTG ELB -04 NPT L x -04 JIC	2	-
3	5550183	FTG ELB -06 JIC -06L ORB	1	-
4	5550003	FTG TEE -04JIC -04JIC -06JIC	1	-
5	5535001	NUT M8 x 1.25 NL	6	-
6	5530010	HHB M8 x 1.25 x 25mm ZPL	4	-
7	5545200	WASHER M10 x Ø18 SL	4	-
8	5535998	NUT M10 x 1.5	4	-
9	5530760	HHB M10 x 1.5 x 38mm	4	-
10	5530799	HSDS M4.2 x 1.41 x 20	2	-
11	5545535	C WASHER SHIM FOR LIFTS	20	-
12	5530115	BHS 6-32 x 1.25	2	-
13	5535190	HN 6-32	2	-
14	5520140	ROMEX CONNECTOR 3/8 #6623	2	-
15	5716634	D2/10AP/XPR MICROSWITCH COVER, PLASTIC	1	B
16	5525150	SPDT MICRO SWITCH;25A@125VAC	1	-
17	5525112	MICRO SWITCH COVER-5PA2	1	-
18	5580012	LIQUID PTFE THREAD SEALANT 50ml	1	-
19	5530412	BHSC M8 x 1.25 x 30 CL10.9	1	-
20	5530413	BHSC M8 x 1.25 x 45 CL10.9	1	-
21	5545202	WASHER M8 x Ø15 SL	2	-
22	5520001	RUBBER GROMMET, 3/4 I.D.	1	-
23	5535357	NUT M6 x 1.0, NL CL8	2	-
24	5530065	BHSC M6 x 1.0 x 20	2	-
25	5545005	WASHER, M6 x 12mm FLAT	2	-
26	5530423	SSS M6 x 1.0 x 12 CONE	4	-
27	5545341	WASHER M10 x Ø20 FLAT	4	-
28	5535013	NUT M10 x 1.5 NL	4	-
29	5530460	SSS M6 x 1.0 x 12 NL FLAT	1	-
30	5505051	Ø10mm PIPE STRAP	1	A

DO NOT SCALE DRAWING

DIMENSIONS ARE IN MM



NAME	DATE
DRAWN TM	01/14/2020
CHECKED OR	04/28/2023

THIRD ANGLE PROJECTION



PROPRIETARY AND CONFIDENTIAL  
THE INFORMATION CONTAINED IN THIS DRAWING IS THE SOLE PROPERTY OF BENDPAK INC. ANY REPRODUCTION IN PART OR AS A WHOLE WITHOUT THE WRITTEN PERMISSION OF BENDPAK INC. IS PROHIBITED.



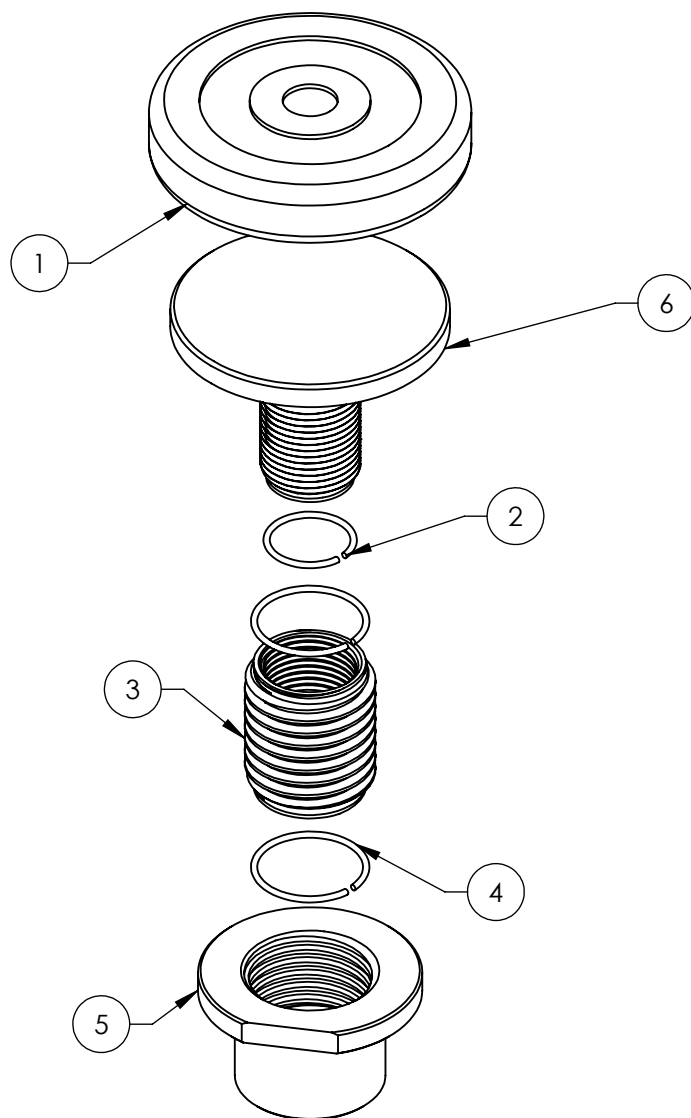
1645 LEMONWOOD DR.  
SANTA PAULA, CA 93060

TITLE: 10AP SERIES  
PARTS BAG

SIZE	DWG. NO.	REV
A	5174047	K

SCALE: 1:16

SHEET 1 OF 1



WHERE USED
10AP SERIES
XPR-9 SERIES

**NOTE: UNLESS OTHERWISE SPECIFIED.**

1. REFER TO MODEL FOR ADDITIONAL INFORMATION
2. SEE SHIPPING INSTRUCTIONS FOR FINAL PACKAGING
3. ASSEMBLE ITEMS AS SHOWN

NEXT ASSEMBLY
5250037
5250356
5250357
5250329
5250343
5250344
5250346
5250347
5250358

REVISION				
REV	DESCRIPTION	DATE	EDITED BY	ECO#
F	UPDATED BOM REVISION	09/21/2016	DB	00780
G	UPDATED BOM REVISION	02/05/2018	TS	00922
G-001	UPDATED NEXT ASSEMBLY	05/14/2018	TM	00946
H	UPDATED BOM REVISION	05/30/2018	TM	00953
H-001	UPDATED NEXT ASSEMBLIES	06/25/2018	TM	00964

ITEM NO	PART NUMBER	DESCRIPTION	QTY	REV
1	5715017	ROUND LIFT PAD ADAPTER POLYURETHANE PAD	1	E
2	5540025	S RING Ø35mm	1	A
3	5746692	INNER SCREW	1	C
4	5540026	S RING Ø45mm	2	A
5	5746693	ROUND LIFT PAD SCREW ADAPTOR	1	D
6	5601001	ROUND LIFT PAD ADAPTOR WELDMENT	1	D

DO NOT SCALE DRAWING

DIMENSIONS ARE IN MM



NAME	DATE
DRAWN CHY	06/14/2015
CHECKED CA	06/29/2018

THIRD ANGLE PROJECTION



PROPRIETARY AND CONFIDENTIAL  
THE INFORMATION CONTAINED IN THIS DRAWING IS THE SOLE PROPERTY OF BENDPAK INC. ANY REPRODUCTION IN PART OR AS A WHOLE WITHOUT THE WRITTEN PERMISSION OF BENDPAK INC. IS PROHIBITED.

<b>BendPak</b>
1645 LEMONWOOD DR. SANTA PAULA, CA 93060

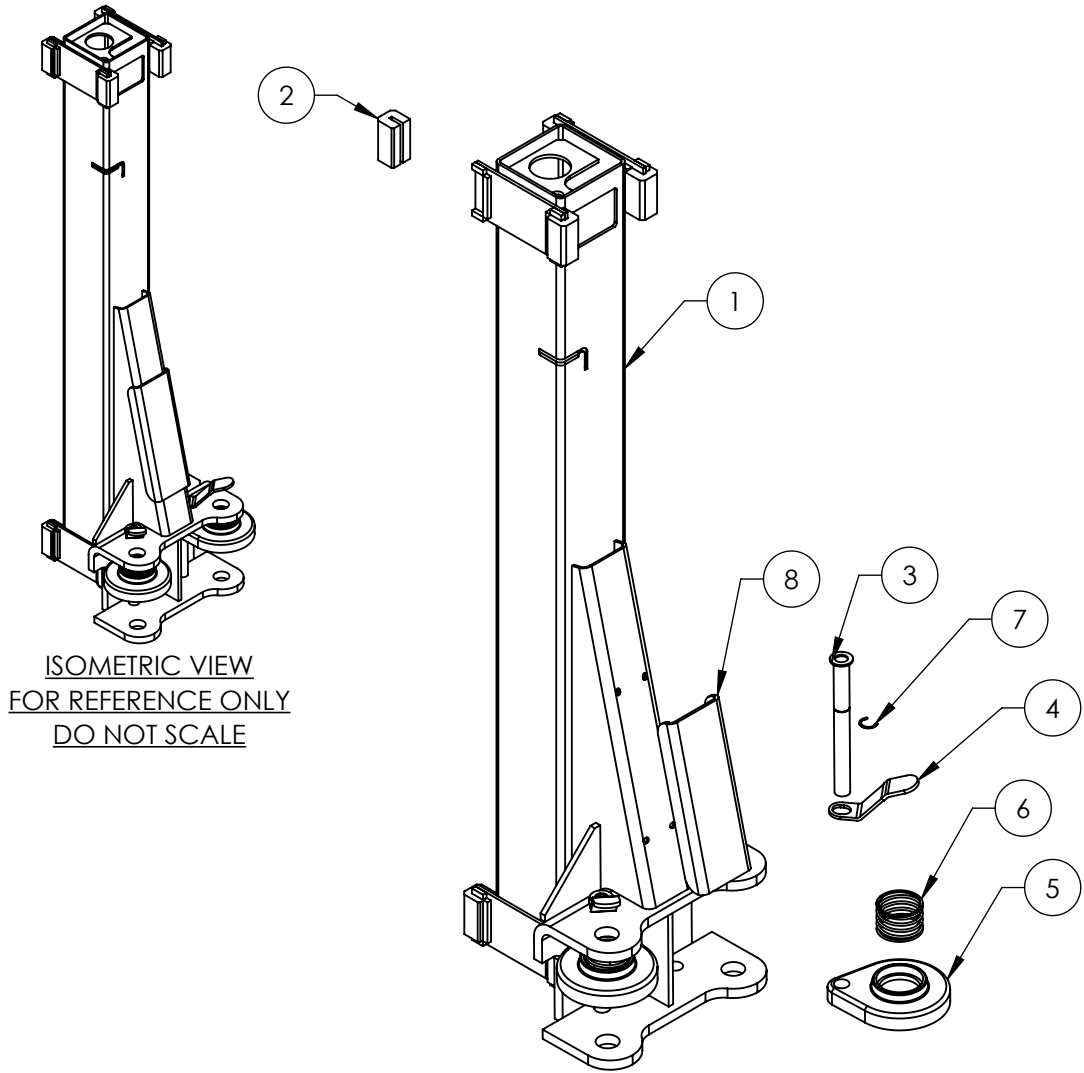
TITLE:  
ROUND ADJUSTABLE LIFT  
PAD ASSEMBLY

SIZE	DWG. NO.	REV
A	5215704	H

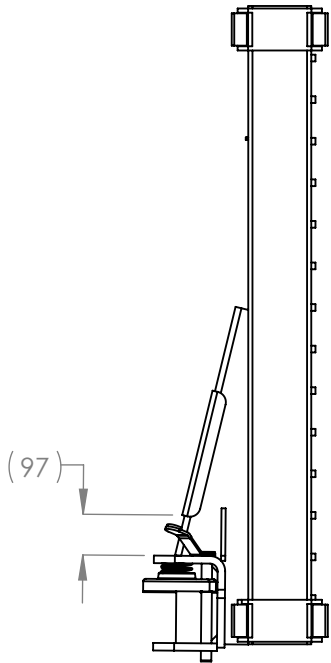
SCALE: 1:3

SHEET 1 OF 1

REVISION				
REV	DESCRIPTION	DATE	EDITED BY	ECO#
D	UPDATED BOM REVISION	11/30/2022	CA	01458
E	UPDATED BOM REVISIONS	12/12/2022	TM	01460
F	UPDATED BOM REVISION	01/30/2023	CA	01467



ISOMETRIC VIEW  
FOR REFERENCE ONLY  
DO NOT SCALE



ITEM NO	PART NUMBER	DESCRIPTION	QTY	REV
1	5601853	10APX LIFT HEAD WELDMENT	1	D
2	5716001	2 POST GUIDE BLOCK	8	H
3	5601509	10AP ARM LOCK GUIDE ROD WELDMENT	2	E
4	5701700	10AP ARM LOCK RELEASE HANDLE	2	C
5	5701701	10AP ARM INTERNAL FULL CIRCLE GEAR STOP	2	C
6	5540044	COMPRESSION SPRING Ø74 x 50mm	2	-
7	5540006	SNAP RING TRUARC 5103-100	2	-
8	5930003	10AP LIFT HEAD GUSSET COVER	1	B

WHERE USED
10APX
10APX-181

**NOTE: UNLESS OTHERWISE SPECIFIED.**

- REFER TO MODEL FOR ADDITIONAL INFORMATION
- SEE SHIPPING INSTRUCTIONS FOR FINAL PACKAGING
- ASSEMBLE ITEMS AS SHOWN

NEXT ASSEMBLY
5216130
5216131

DO NOT SCALE DRAWING

DRAWN CA 06/07/2022  
CHECKED OR 02/03/2023

DIMENSIONS ARE IN MM



NAME DATE  
CA 06/07/2022  
OR 02/03/2023

THIRD ANGLE PROJECTION



PROPRIETARY AND CONFIDENTIAL  
THE INFORMATION CONTAINED IN THIS DRAWING IS  
THE SOLE PROPERTY OF BENDPAK INC. ANY  
REPRODUCTION IN PART OR AS A WHOLE WITHOUT  
THE WRITTEN PERMISSION OF BENDPAK INC. IS  
PROHIBITED.

**BendPak**  
1645 LEMONWOOD DR.  
SANTA PAULA, CA 93060

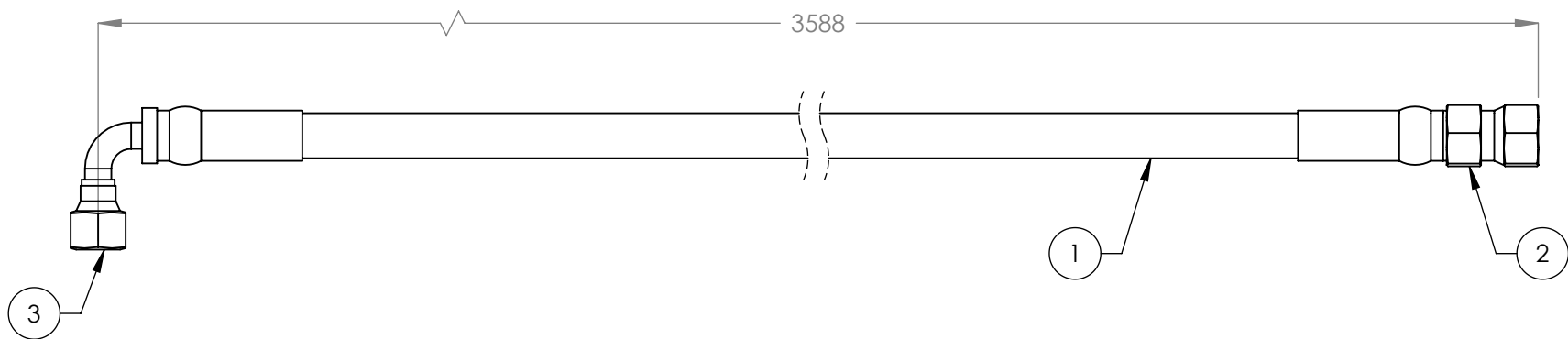
TITLE: 10APX LIFT HEAD  
ASSEMBLY

SIZE DWG. NO. REV  
A 5216181 F

SCALE: 1:12

SHEET 1 OF 2

REVISION				
REV	DESCRIPTION	DATE	EDITED BY	ECO#
A	PRODUCTION RELEASE	12/03/2015	JM	00740
B	UPDATED TITLE TO REFLECT MARKETING	11/21/2019	CA	01120





WHERE USED
HD-9TG
10APX
10APX-181

**NOTE: UNLESS OTHERWISE SPECIFIED.**

- FOR ITEM 1 SPECIFICATIONS REFER TO PART SPECIFICATION FORM
- (\*)ITEM 1 QTY FOR REFERENCE ONLY

NEXT ASSEMBLY
5250346
5250347

ITEM NO.	PART NUMBER	DESCRIPTION	QTY.	REV
1	5570129	Ø6.4 ID HYDRAULIC HOSE	3534mm*	-
2	5550325	FTG NPL Ø1/4 CRIMP x -04 JIC	1	-
3	5550345	FTG ELB Ø1/4 CRIMP x -04 JIC	1	-

DO NOT SCALE DRAWING		NAME	DATE	 1645 LEMONWOOD DR. SANTA PAULA, CA 93060
DRAWN		JM	12/03/2015	
CHECKED		OR	04/24/2020	
DIMENSIONS ARE IN MM TOLERANCES: 0. = ±1.5 0.0 = ±1.0 0.00 = ±0.25 0.000 = ±0.13  SURFACE FINISH 1.6 ISO Ra µm FOR MACHINED SURFACES UNLESS OTHERWISE SPECIFIED		THIRD ANGLE PROJECTION 		TITLE: HOSE ASSEMBLY Ø6.4 x 3588mm SB
<small>PROPRIETARY AND CONFIDENTIAL  THE INFORMATION CONTAINED IN THIS DRAWING IS  THE SOLE PROPERTY OF BENDPAK INC. ANY  REPRODUCTION IN PART OR AS A WHOLE WITHOUT  THE WRITTEN PERMISSION OF BENDPAK INC. IS  PROHIBITED.</small>		SIZE DWG. NO. <b>A</b> 5570023	REV <b>B</b>	SCALE: 1:2 SHEET 1 OF 1

## PART SPECIFICATION FORM

### ACP

<b>BENDPAK Number:</b>	5570129
<b>MRP Description:</b>	1/4" HYDRAULIC HOSE 31 CL-0400X
<b>Date:</b>	05/24/2018
<b>ECO :</b>	00950

#### 1. Engineering Specification

**Application:**

1/4" HYDRAULIC HOSE

**Detailed Description:**

ONE or TWO BRAID STEEL WIRE HYDRAULIC HOSE

SIZE: 1/4" / 6mm I.D. MIN  
 0.53" / 13.4mm O.D. MAX

SPECS: 5700PSI OR 393 BAR WORKING PRESSURE MINIMUM  
 17100PSI OR 1179 BAR MINIMUM BURST PRESSURE MINIMUM  
 3" / 80mm MIN BEND RADIUS

COLOR: BLACK

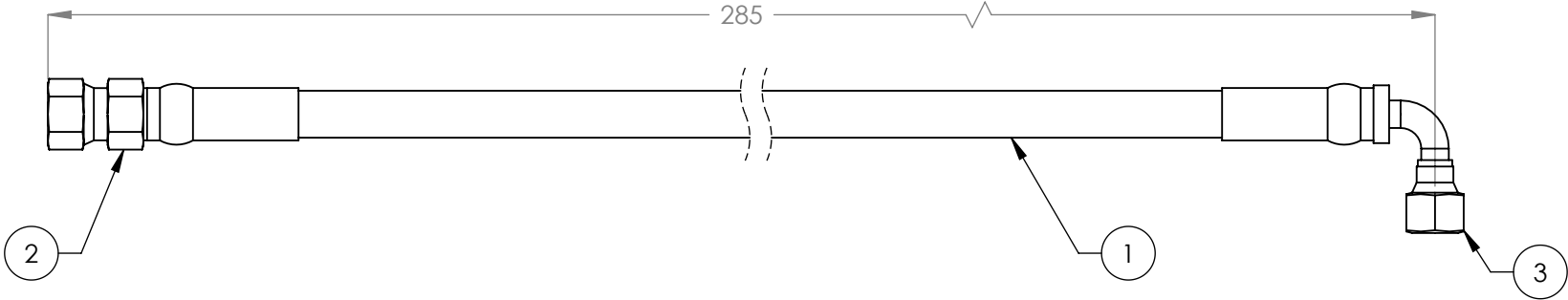
**ADDITIONAL CONTACT INFORMATION:**




#### 2. Vendor Information (Or for Reference)

Approved Vendor	Vendor Part #	Contact #	AUTHORIZED COMPONENT PROVIDER
	5570129		X
2)			
OR BENDPAK ENGINEERING APPROVED EQUIVALENT			

REVISION				
REV	DESCRIPTION	DATE	EDITED BY	ECO#
A	PRODUCTION RELEASE, DERIVED FROM 5570156	06/20/2017	TM	00832
OBSO	REPALCED WITH 5570040	07/13/2021	CA	00903
B	UNOBSOLETE FOR USE IN 10AP SERIES, UPDATED NEXT ASSEMBLIES, WHERE USED AND TITLE	04/18/2023	TM	01487



ITEM NO	PART NUMBER	DESCRIPTION	QTY	REV
1	5570129	Ø6.4 ID HYDRAULIC HOSE	247mm*	-
2	5550325	FTG NPL Ø1/4 CRIMP x -04 JIC	1	-
3	5550345	FTG ELB Ø1/4 CRIMP x -04 JIC	1	-

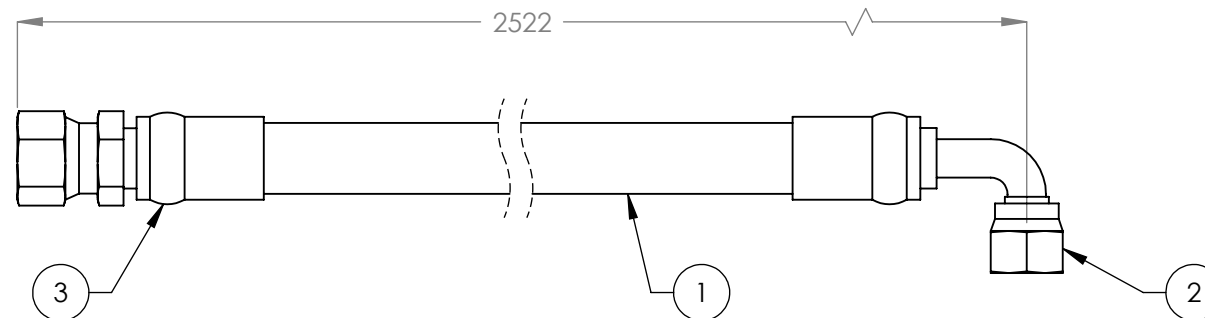
DO NOT SCALE DRAWING		NAME	DATE	<div><div><div></div><div></div></div><div><b>BendPak.</b></div></div> <div>1645 LEMONWOOD DR. SANTA PAULA, CA 93060</div>		
		DRAWN	TM	06/20/2017		
		CHECKED	OR	04/19/2023		
DIMENSIONS ARE IN MM TOLERANCES: <div>0. = ±1.5 0.0 = ±1.0 0.00 = ±0.25 0.000 = ±0.13</div> SURFACE FINISH 1.6 ISO Ra µm FOR MACHINED SURFACES UNLESS OTHERWISE SPECIFIED		THIRD ANGLE PROJECTION		TITLE: HYDRAULIC HOSE ASSEMBLY Ø6.35 x 285mm SB		
						
		PROPRIETARY AND CONFIDENTIAL THE INFORMATION CONTAINED IN THIS DRAWING IS THE SOLE PROPERTY OF <b>BENDPAK INC.</b> ANY REPRODUCTION IN PART OR AS A WHOLE WITHOUT THE WRITTEN PERMISSION OF <b>BENDPAK INC.</b> IS PROHIBITED.		SIZE	DWG. NO.	REV
				<b>A</b>	5570174	B
				SCALE: 1:2		
				SHEET 1 OF 1		

WHERE USED
10AP SERIES

- NOTE: UNLESS OTHERWISE SPECIFIED.**
- FOR ITEM 1 SPECIFICATIONS REFER TO PART SPECIFICATION FORM
  - (\*)ITEM 1 QTY FOR REFERENCE ONLY

NEXT ASSEMBLY
5240022
5240036
5250343
5250344
5250346
5250347

REVISION				
REV	DESCRIPTION	DATE	EDITED BY	ECO#
A	PRODUCTION RELEASE, DERIVED FROM 5570076	03/28/2022	CA	01406





WHERE USED
10APX
10APX-181

**NOTE: UNLESS OTHERWISE SPECIFIED.**

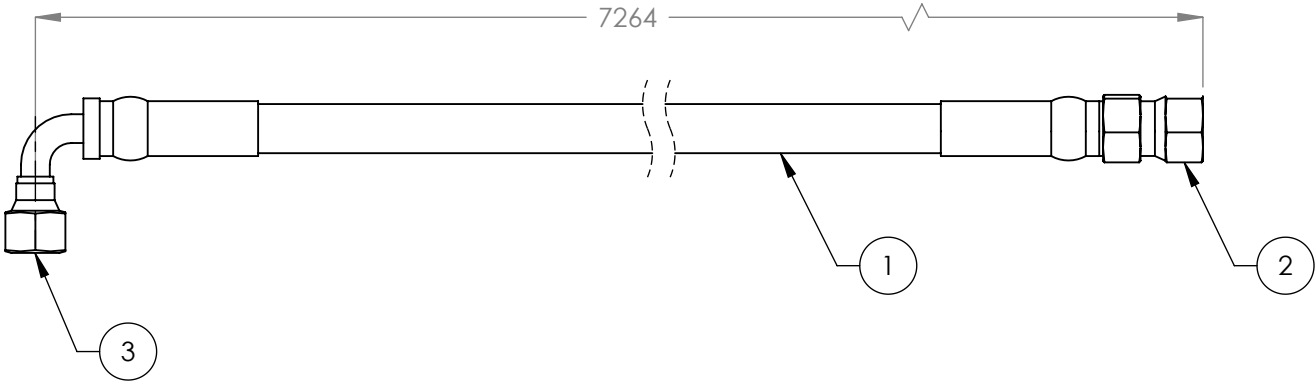
- FOR ITEM 1 SPECIFICATIONS REFER TO PART SPECIFICATION FORM
- (\*)ITEM 1 QTY FOR REFERENCE ONLY

NEXT ASSEMBLY
5250346
5250347

ITEM NO	PART NUMBER	DESCRIPTION	QTY	REV
1	5570116	Ø10 ID HYDRAULIC HOSE	2447mm*	-
2	5550337	FTG ELB -06 CRIMP x -06 JIC	1	-
3	5550336	FTG NPL -06 CRIMP x -06 JIC	1	-

DO NOT SCALE DRAWING		NAME		DATE		<div><div></div><div><b>BendPak.</b></div></div>	
DIMENSIONS ARE IN MM TOLERANCES:  0. = ±1.5 0.0 = ±1.0 0.00 = ±0.25 0.000 = ±0.13  SURFACE FINISH 1.6 ISO Ra µm FOR MACHINED SURFACES UNLESS OTHERWISE SPECIFIED		DRAWN		CA		03/28/2022	
		CHECKED		OR		04/11/2022	
		THIRD ANGLE PROJECTION					
		TITLE:					
		HYDRAULIC HOSE ASSEMBLY Ø10 x 2522mm SB					
		SIZE		DWG. NO.		REV	
Y		A		5570278		A	
		SCALE: 1:2					
		SHEET 1 OF 1					

REVISION				
REV	DESCRIPTION	DATE	EDITED BY	ECO#
A	PRODUCTION RELEASE, DERIVED FROM 5570257	03/28/2022	CA	01406
B	LENGTH WAS 7256 NOW 7332	06/14/2022	CA	01417
C	WAS 7332 NOW 7264	11/30/2022	CA	01458



WHERE USED
10APX

**NOTE: UNLESS OTHERWISE SPECIFIED.**

1. FOR ITEM 1 SPECIFICATIONS REFER TO PART SPECIFICATION FORM
2. (\*)ITEM 1 QTY FOR REFERENCE ONLY

NEXT ASSEMBLY
5250346

ITEM NO	PART NUMBER	DESCRIPTION	QTY	REV
1	5570129	Ø6.4 ID HYDRAULIC HOSE	7214mm*	-
2	5550325	FTG NPL Ø1/4 CRIMP x -04 JIC	1	-
3	5550345	FTG ELB Ø1/4 CRIMP x -04 JIC	1	-

DO NOT SCALE DRAWING	NAME	DATE
DRAWN	CA	03/28/2022
CHECKED		

DIMENSIONS ARE IN MM

TOLERANCES:

0. = ±1.5

0.0 = ±1.0

0.00 = ±0.25

0.000 = ±0.13

SURFACE FINISH 1.6 ISO Ra µm

FOR MACHINED SURFACES

UNLESS OTHERWISE SPECIFIED

THIRD ANGLE PROJECTION

PROPRIETARY AND CONFIDENTIAL

THE INFORMATION CONTAINED IN THIS DRAWING IS THE SOLE PROPERTY OF BENDPAK INC. ANY REPRODUCTION IN PART OR AS A WHOLE WITHOUT THE WRITTEN PERMISSION OF BENDPAK INC. IS PROHIBITED.

**BP BendPak.**

1645 LEMONWOOD DR.  
SANTA PAULA, CA 93060

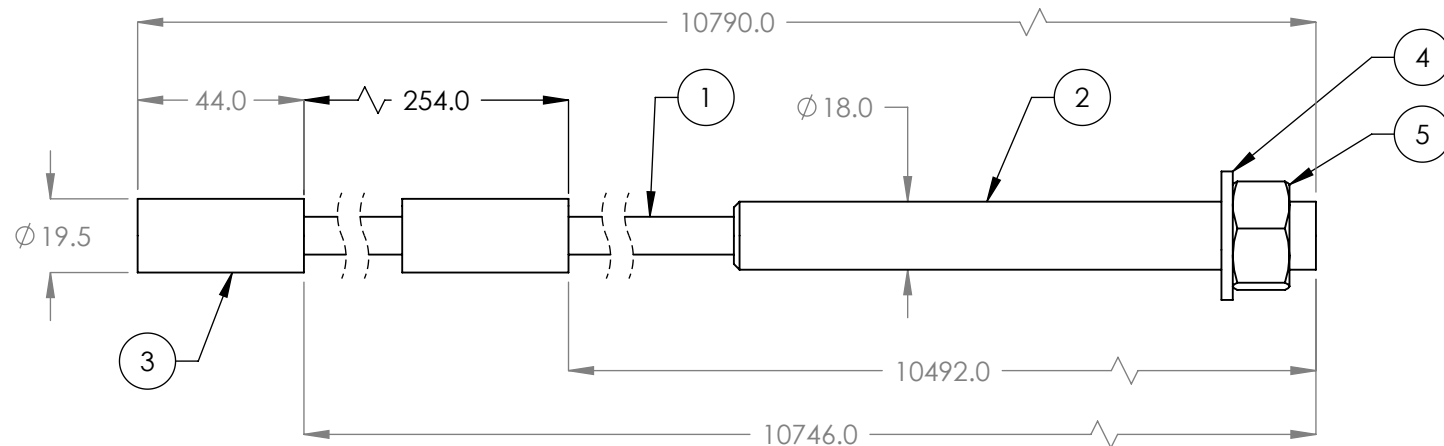
TITLE:  
**HYDRAULIC HOSE ASSEMBLY**  
**Ø6.35 x 7264mm SB**

SIZE DWG. NO. REV

**A** 5570293 **C**

SCALE: 1:2 SHEET 1 OF 1

REVISION				
REV	DESCRIPTION	DATE	EDITED BY	ECO#
A	PRODUCTION RELEASE, DERIVED FROM 5595733	02/01/2023	CA	01467



ITEM NO	PART NUMBER	DESCRIPTION	QTY	REV
1	5595011	CABLE, LIFTING Ø10mm	10670mm*	-
2	5746022	Ø10 THREADED CABLE CONNECTOR	1	D
3	5746021	Ø10 CABLE END CONNECTOR	2	E
4	5545342	WASHER M18 FLAT	1	-
5	5535358	NUT, M18 x 2.5 NL	1	-

WHERE USED  
10APX

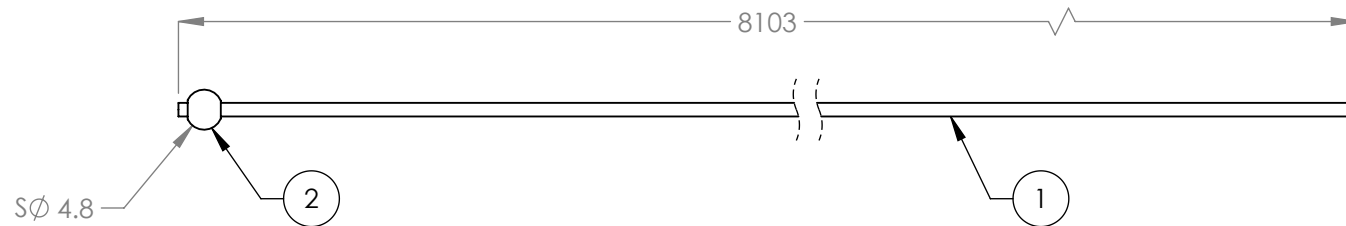
**NOTE: UNLESS OTHERWISE SPECIFIED.**

- FOR ITEM 1 SPECIFICATIONS REFER TO PART SPECIFICATION FORM
- LENGTH SHOWN IS AFTER SWAGING
- ITEM 1 QTY FOR REFERENCE ONLY
- THREAD 5535358 WITH 5545342 ONTO CABLES FOR SHIPMENT

NEXT ASSEMBLY  
5250346

DO NOT SCALE DRAWING		NAME	DATE	<p>1645 LEMONWOOD DR. SANTA PAULA, CA 93060</p>
DRAWN		CA	02/01/2023	
CHECKED		OR	02/03/2023	
DIMENSIONS ARE IN MM TOLERANCES: 0. = ±1.5 0.0 = ±0.5  SURFACE FINISH 1.6 ISO Ra µm FOR MACHINED SURFACES UNLESS OTHERWISE SPECIFIED		THIRD ANGLE PROJECTION		TITLE: CABLE ASSEMBLY Ø10 x 10790mm DBST
THE INFORMATION CONTAINED IN THIS DRAWING IS THE SOLE PROPERTY OF BENDPAK INC. ANY REPRODUCTION IN PART OR AS A WHOLE WITHOUT THE WRITTEN PERMISSION OF BENDPAK INC. IS PROHIBITED.		SIZE DWG. NO. A 5595754		REV A
SCALE: 1:2				SHEET 1 OF 1

REVISION				
REV	DESCRIPTION	DATE	EDITED BY	ECO#
A	PRODUCTION RELEASE, DERIVED FROM 5595707	06/14/2022	CA	01417



WHERE USED
10APX

**NOTE: UNLESS OTHERWISE SPECIFIED.**

1. REFER TO MODEL FOR ADDITIONAL INFORMATION
2. FOR ITEM 1 AND 2 SPECIFICATIONS REFER TO PART SPECIFICATION FORM

NEXT ASSEMBLY
5250346

ITEM NO	PART NUMBER	DESCRIPTION	QTY	REV
1	5595749	SAFETY CABLE Ø1.8	8103mm*	-
2	5580030	Ø1.8 CABLE END CRIMP	1	-

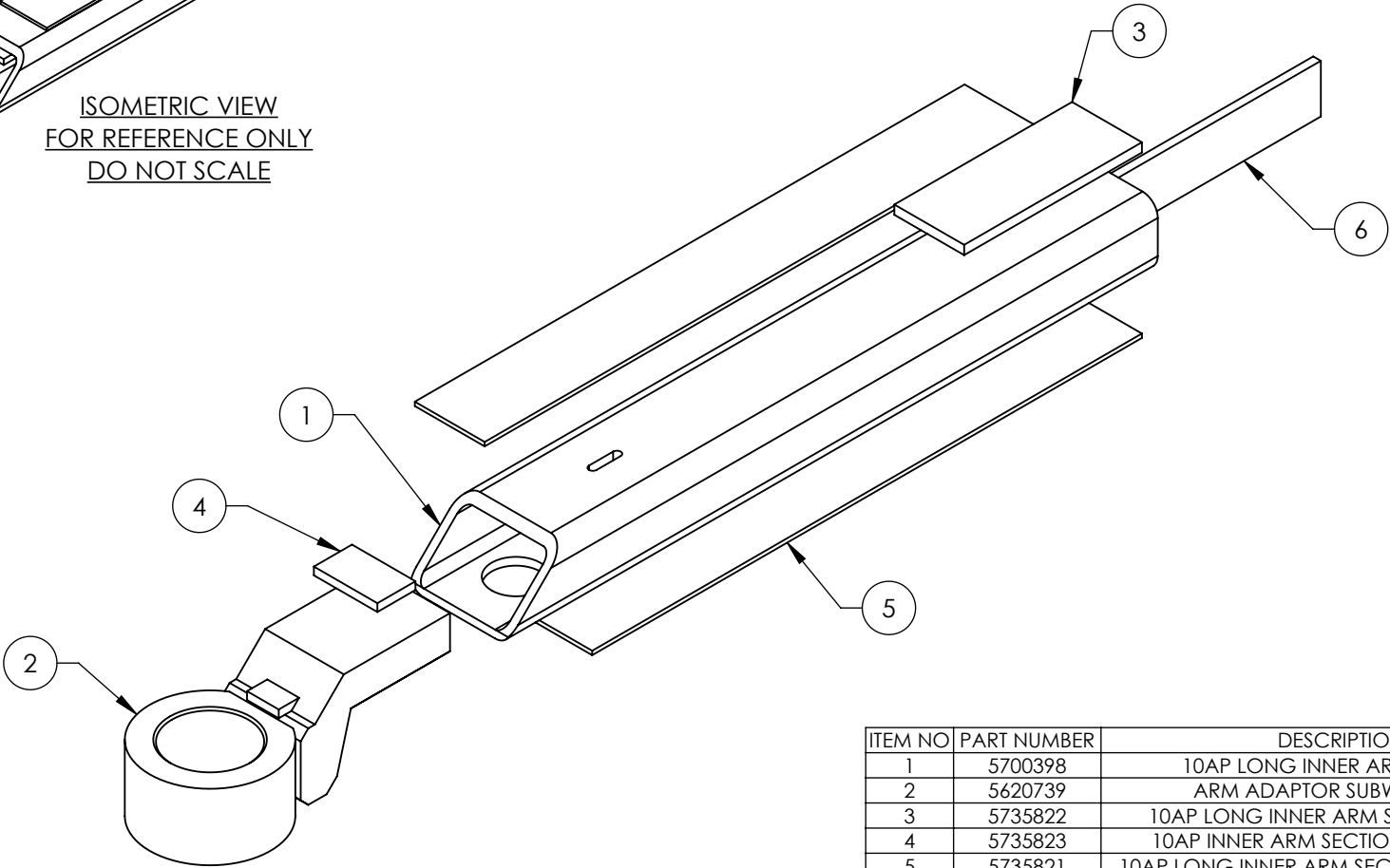
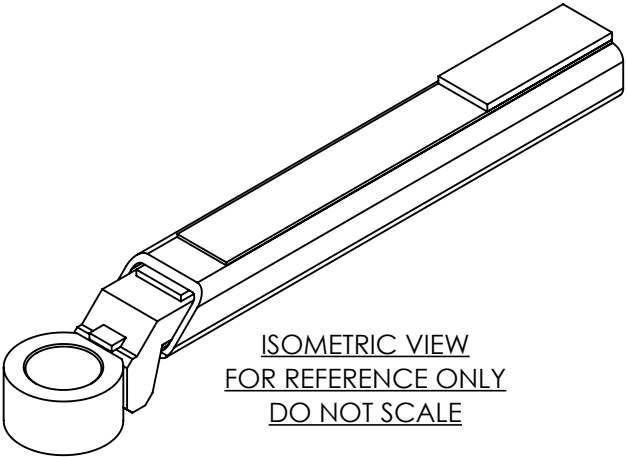
DO NOT SCALE DRAWING	NAME	DATE
DRAWN	CA	06/14/2022
CHECKED		

DIMENSIONS ARE IN MM TOLERANCES: 0. = ±1.5 0.0 = ±0.5	THIRD ANGLE PROJECTION
SURFACE FINISH 1.6 ISO Ra µm FOR MACHINED SURFACES UNLESS OTHERWISE SPECIFIED	

<b>BendPak.</b> 1645 LEMONWOOD DR. SANTA PAULA, CA 93060	
TITLE: SAFETY CABLE Ø1.8 x 8103mm	
SIZE DWG. NO.	REV
<b>A</b> 5595832	<b>A</b>
SCALE: 1:1	
SHEET 1 OF 1	

PROPRIETARY AND CONFIDENTIAL  
THE INFORMATION CONTAINED IN THIS DRAWING IS  
THE SOLE PROPERTY OF BENDPAK INC. ANY  
REPRODUCTION IN PART OR AS A WHOLE WITHOUT  
THE WRITTEN PERMISSION OF BENDPAK INC. IS  
PROHIBITED.

REVISION				
REV	DESCRIPTION	DATE	EDITED BY	ECO#
D	INCREASED LEGNTH, UPDATED BOM REVISION	04/13/2021	TM	01292
E	ADDED (1) 5735821, REMOVED 5735028, UPDATED BOM REVISION	11/09/2021	OR	01361
F	UPDATED BOM REVISION	05/24/2023	TM	01492


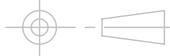


WHERE USED
10AP SERIES

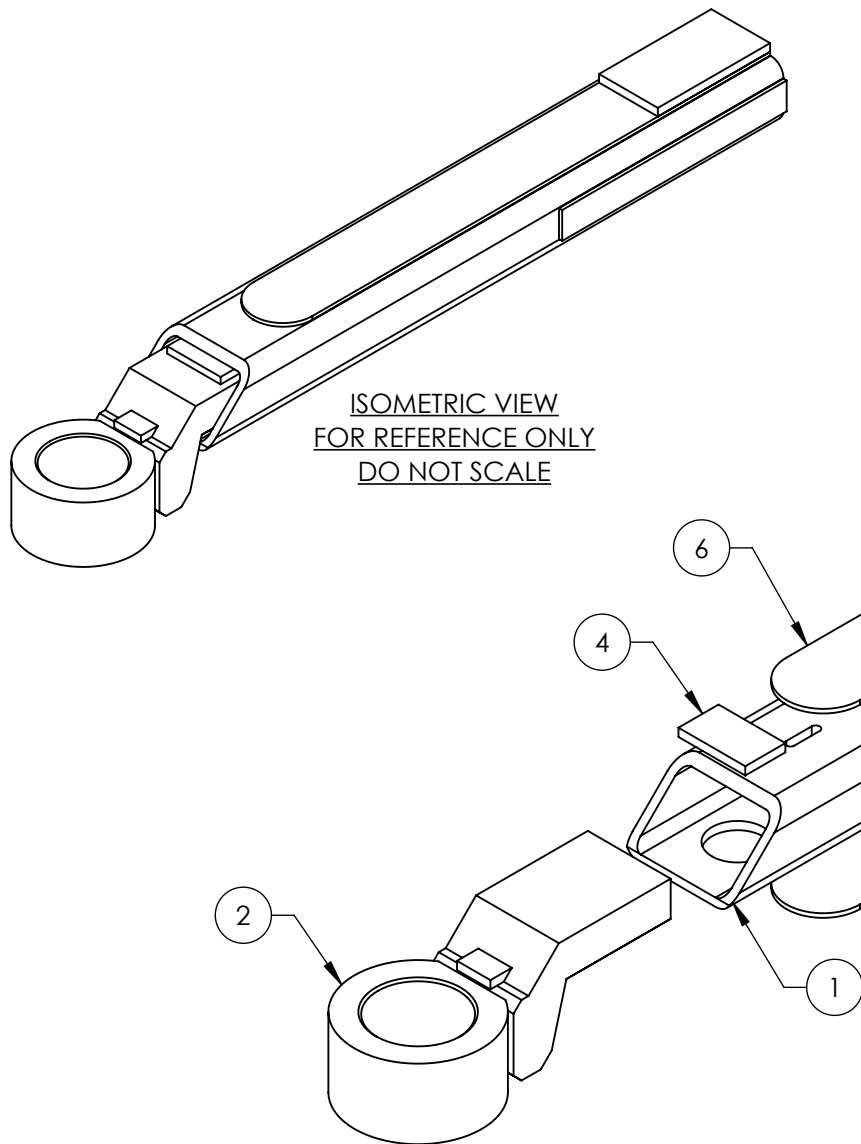
**NOTE: UNLESS OTHERWISE SPECIFIED.**

1. REFER TO MODEL FOR ADDITIONAL INFORMATION
2. BREAK AND DEBURR ALL SHARP EDGES 0.3mm
3. WELD 5735838 IN PLACE BEFORE 5735821
4. REMOVE ALL WELD SPLATTER
5. MASK THREADS BEFORE PAINTING
6. DIMENSIONS SHOWN ARE AFTER PAINTING
7. PAINT YELLOW (RAL-1018) 20% GLOSS

ITEM NO	PART NUMBER	DESCRIPTION	QTY	REV
1	5700398	10AP LONG INNER ARM SECTION	1	D
2	5620739	ARM ADAPTOR SUBWELDMENT	1	C
3	5735822	10AP LONG INNER ARM SECTION GUIDE	1	C
4	5735823	10AP INNER ARM SECTION TOP SPACER	1	A
5	5735821	10AP LONG INNER ARM SECTION TOP SPACER	2	D
6	5735838	10AP INNER ARM INTERIOR GUSSET, LONG	1	B

DO NOT SCALE DRAWING		NAME	DATE	  1645 LEMONWOOD DR. SANTA PAULA, CA 93060	
<div>DIMENSIONS ARE IN MM TOLERANCES:  0. = ±1.5 0.0 = ±0.5</div>		DRAWN	SM		04/17/2020
		CHECKED	OR		05/26/2023
<div>SURFACE FINISH 1.6 ISO Ra µm FOR MACHINED SURFACES UNLESS OTHERWISE SPECIFIED</div>		THIRD ANGLE PROJECTION		TITLE:	
				10AP LONG ARM WELDMENT, INNER SECTION	
				SIZE	DWG. NO.
<div>PROPRIETARY AND CONFIDENTIAL THE INFORMATION CONTAINED IN THIS DRAWING IS THE SOLE PROPERTY OF BENDPAK INC. ANY REPRODUCTION IN PART OR AS A WHOLE WITHOUT THE WRITTEN PERMISSION OF BENDPAK INC. IS PROHIBITED.</div>		A		5601512	F
		SCALE: 1:4		SHEET 1 OF 3	

NEXT ASSEMBLY
5216216



ISOMETRIC VIEW  
FOR REFERENCE ONLY  
DO NOT SCALE

REVISION				
REV	DESCRIPTION	DATE	EDITED BY	ECO#
A	PRODUCTION RELEASE, DERIVED FROM 5601515	11/19/2021	OR	01361
B	UPDATED BOM REVISION	05/24/2023	TM	01492

WHERE USED
10AP SERIES

# **NOTE: UNLESS OTHERWISE SPECIFIED.**

1. REFER TO MODEL FOR ADDITIONAL INFORMATION
2. BREAK AND DEBURR ALL SHARP EDGES 0.3mm
3. WELD 5735905 IN PLACE BEFORE 5735903
4. REMOVE ALL WELD SPLATTER
5. MASK THREADS BEFORE PAINTING
6. DIMENSIONS SHOWN ARE AFTER PAINTING
7. PAINT YELLOW (RAL-1018) 20% GLOSS

NEXT ASSEMBLY
5216217
5216218

ITEM NO	PART NUMBER	DESCRIPTION	QTY	REV
1	5700439	10AP ASYMMETRIC INNER ARM SECTION TUBE	1	A
2	5620739	ARM ADAPTOR SUBWELDMENT	1	C
3	5735902	10AP ASYMMETRIC INNER ARM GUIDE/STOP	1	A
4	5735823	10AP INNER ARM SECTION TOP SPACER	1	A
5	5735904	10AP ASYMMETRIC INNER ARM SIDE SPACER	2	A
6	5735903	10AP ASYMMETRIC ARM INNER SECTION TOP/BOTTOM SPACER	2	A
7	5735905	10AP ASYMMETRIC INNER ARM INTERIOR GUSSET	1	A

DO NOT SCALE DRAWING

DIMENSIONS ARE IN MM  
TOLERANCES:  
0. =  $\pm 1.5$   
0.0 =  $\pm 0.5$

SURFACE FINISH 1.6 ISO Ra  $\mu$ m  
FOR MACHINED SURFACES  
UNLESS OTHERWISE SPECIFIED

NAME	DATE
DRAWN RK	11/16/2021
CHECKED OR	05/26/2023

THIRD ANGLE PROJECTION



PROPRIETARY AND CONFIDENTIAL  
THE INFORMATION CONTAINED IN THIS DRAWING IS  
THE SOLE PROPERTY OF BENDPAK INC. ANY  
REPRODUCTION IN PART OR AS A WHOLE WITHOUT  
THE WRITTEN PERMISSION OF BENDPAK INC. IS  
PROHIBITED.

**BendPak.**

1645 LEMONWOOD DR.  
SANTA PAULA, CA 93060

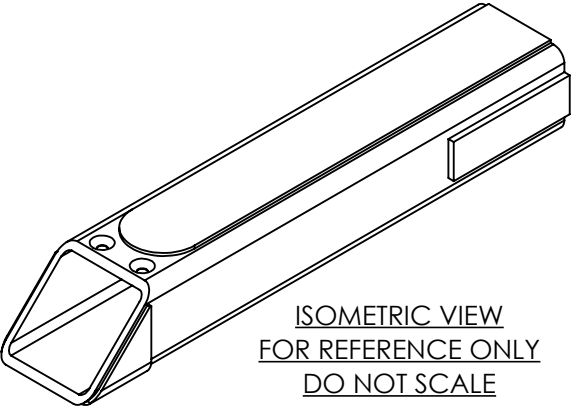
TITLE: 10AP ASYMMETRIC ARM  
WELDMENT, INNER SECTION

SIZE	DWG. NO.	REV
A	5601752	B

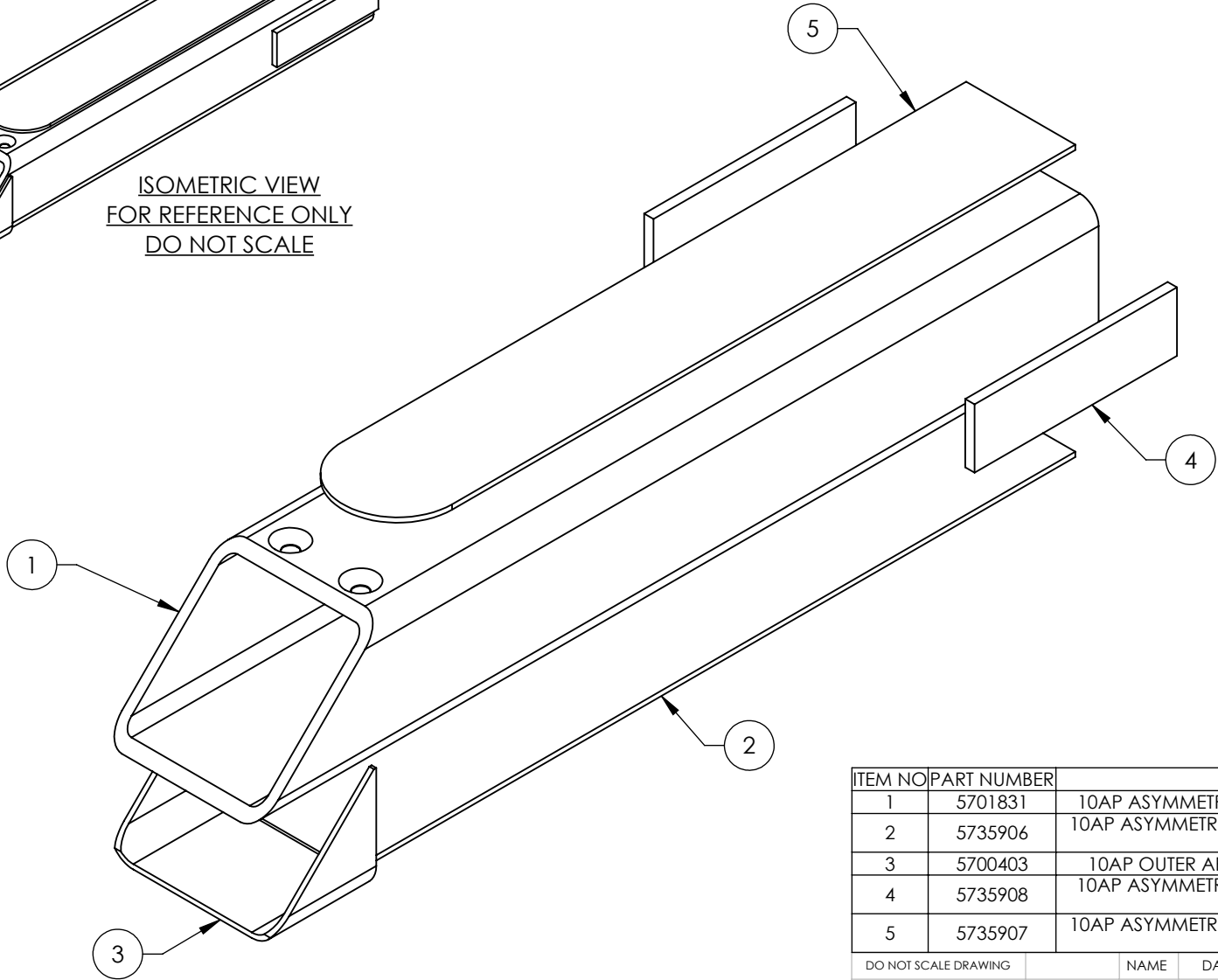
SCALE: 1:3

SHEET 1 OF 3

REVISION				
REV	DESCRIPTION	DATE	EDITED BY	ECO#
A	PRODUCTION RELEASE, DERIVED FROM 5601513	11/19/2021	OR	01361



ISOMETRIC VIEW  
FOR REFERENCE ONLY  
DO NOT SCALE



ITEM NO	PART NUMBER	DESCRIPTION	QTY	REV
1	5701831	10AP ASYMMETRIC ARM MIDDLE SECTION TUBE	1	A
2	5735906	10AP ASYMMETRIC ARM MIDDLE SECTION PLATE, BOTTOM	1	A
3	5700403	10AP OUTER ARM MIDDLE SECTION SUPPORT	1	B
4	5735908	10AP ASYMMETRIC ARM, MIDDLE SECTION SIDE SPACER	2	A
5	5735907	10AP ASYMMETRIC ARM MIDDLE SECTION PLATE, TOP	1	A

WHERE USED
10AP SERIES

**NOTE: UNLESS OTHERWISE SPECIFIED.**

- REFER TO MODEL FOR ADDITIONAL INFORMATION
- BREAK AND DEBURR ALL SHARP EDGES 0.3mm
- REMOVE ALL WELD SPLATTER

NEXT ASSEMBLY
5216217
5216218

DO NOT SCALE DRAWING

DIMENSIONS ARE IN MM  
TOLERANCES:  
0. = ±1.5  
0.0 = ±0.5

SURFACE FINISH 1.6 ISO Ra µm  
FOR MACHINED SURFACES  
UNLESS OTHERWISE SPECIFIED

DRAWN  
RK

CHECKED  
OR

THIRD ANGLE PROJECTION

NAME  
RK

DATE  
11/16/2021

DATE  
12/08/2021

BendPak.

1645 LEMONWOOD DR.  
SANTA PAULA, CA 93060

**TITLE: 10AP ASYMMETRIC ARM WELDMENT, MIDDLE SECTION**

SIZE DWG. NO.

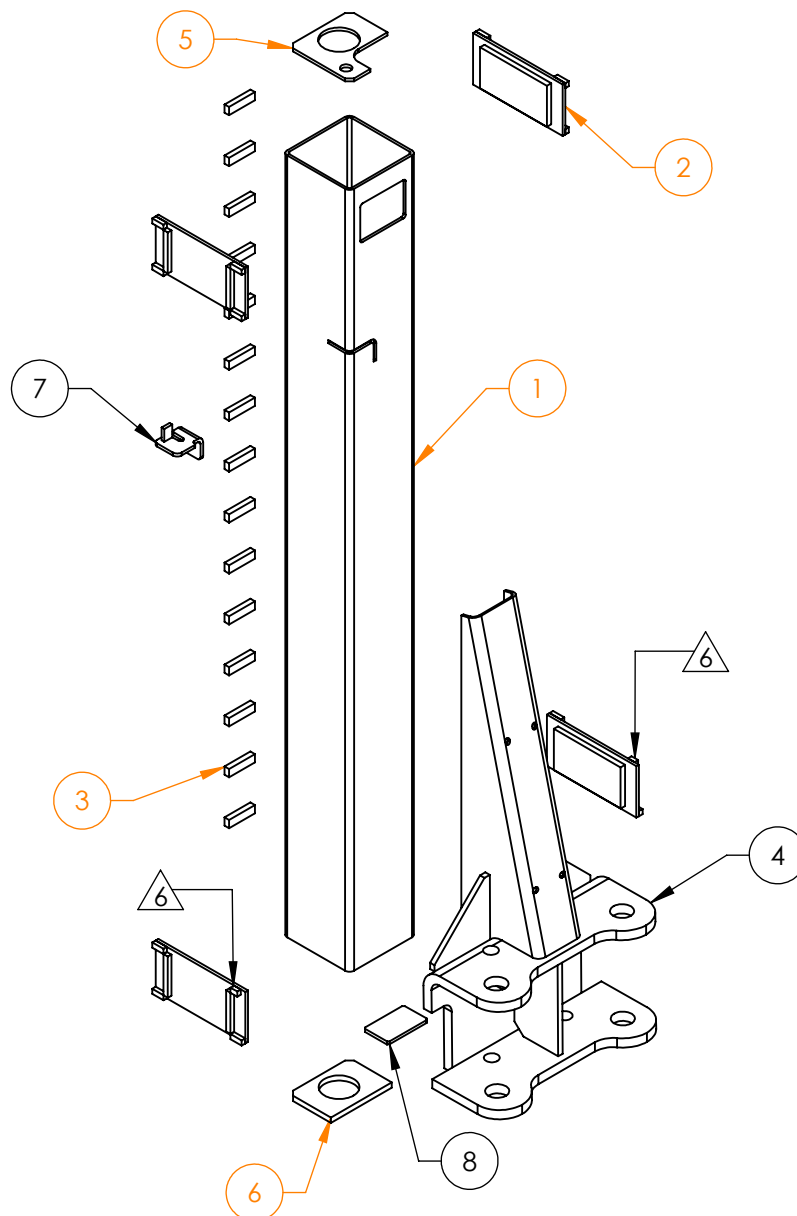
A 5601753

REV  
A

SCALE: 1:4

SHEET 1 OF 2

PROPRIETARY AND CONFIDENTIAL  
THE INFORMATION CONTAINED IN THIS DRAWING IS THE SOLE PROPERTY OF BENDPAK INC. ANY REPRODUCTION IN PART OR AS A WHOLE WITHOUT THE WRITTEN PERMISSION OF BENDPAK INC. IS PROHIBITED.



WHERE USED
10APX
10APX-181

# **NOTE: UNLESS OTHERWISE SPECIFIED.**

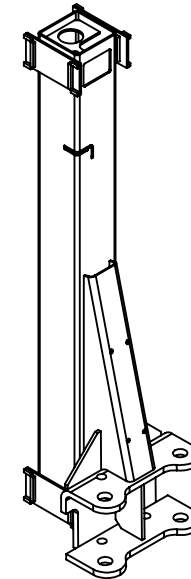
- REFER TO MODEL FOR ADDITIONAL INFORMATION
- BREAK AND DEBURR ALL SHARP EDGES 0.3mm
- REMOVE ALL WELD SPLATTER
- DIMENSIONS SHOWN ARE AFTER PAINTING
- PAINT GRAY (RAL-7024) 20% GLOSS



10mm CUT TO LOWER 5620676 2PL **ONLY**

NEXT ASSEMBLY  
5216181

REVISION				
REV	DESCRIPTION	DATE	EDITED BY	ECO#
B	REPLACED 5376170 WITH 5737330, WAS 56 14PL NOW 46 14PL	07/12/2022	TM	01430
C	ADDED 10mm CUT TO LOWER 5620676, UPDATED BOM REVISION	09/09/2022	TM	01445
D	UPDATED BOM REVISION	12/12/2022	TM	01460



ISOMETRIC VIEW  
FOR REFERENCE ONLY  
DO NOT SCALE

ITEM NO	PART NUMBER	DESCRIPTION	QTY	REV
1	5766381	10APX LIFT HEAD TUBE	1	B
2	5620676	10AP/D2-10 LIFT HEAD SLIDE BLOCK BRACKET SUBWELDMENT	4	A
3	5737330	10AP SAFETY STOP BLOCK	15	A
4	5620763	10AP LIFT HEAD GUSSET SUBWELDMENT	1	C
5	5737175	10AP LIFT HEAD TOP PLATE	1	B
6	5737174	10AP LIFT HEAD BOTTOM PLATE	1	A
7	5620559	10AP, D2-8F, XPR-9/10 LIFT HEAD CABLE BUTTON STOP WELDMENT	1	B
8	5731074	10AP LIFT HEAD CLOSEOUT GUSSET	1	A

DO NOT SCALE DRAWING

DIMENSIONS ARE IN MM  
TOLERANCES:  
0. = ±1.5  
0.0 = ±0.5

SURFACE FINISH 1.6 ISO Ra µm  
FOR MACHINED SURFACES  
UNLESS OTHERWISE SPECIFIED

NAME DATE  
DRAWN CA 06/07/2022  
CHECKED OR 12/15/2022  
THIRD ANGLE PROJECTION



PROPRIETARY AND CONFIDENTIAL  
THE INFORMATION CONTAINED IN THIS DRAWING IS  
THE SOLE PROPERTY OF BENDPAK INC. ANY  
REPRODUCTION IN PART OR AS A WHOLE WITHOUT  
THE WRITTEN PERMISSION OF BENDPAK INC. IS  
PROHIBITED.

**BendPak.**  
1645 LEMONWOOD DR.  
SANTA PAULA, CA 93060

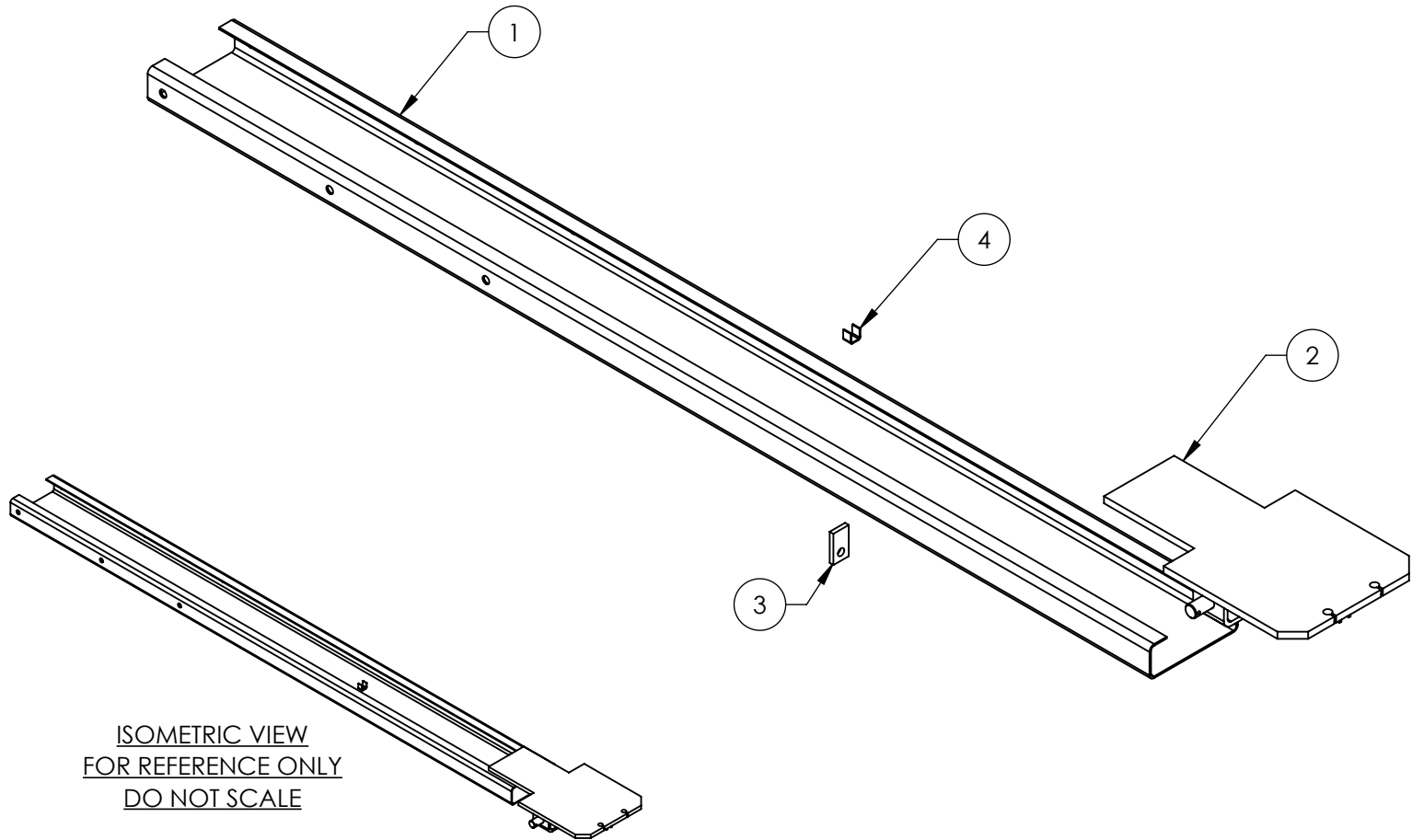
TITLE:  
10APX LIFT HEAD  
WELDMENT

SIZE DWG. NO. REV  
**A** 5601853 D

SCALE: 1:12

SHEET 1 OF 3

REVISION				
REV	DESCRIPTION	DATE	EDITED BY	ECO#
A	PRODUCTION RELEASE, DERIVED FROM 5601507	06/07/2022	CA	01417
B	UPDATED BOM REVISION, ADDED MASKING INSTRUCTIONS	10/03/2022	TM	01449
C	UPDATED BOM REVISION	01/30/2023	CA	01467



ISOMETRIC VIEW  
FOR REFERENCE ONLY  
DO NOT SCALE


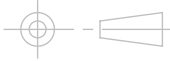
WHERE USED
10AP SERIES

**NOTE: UNLESS OTHERWISE SPECIFIED.**

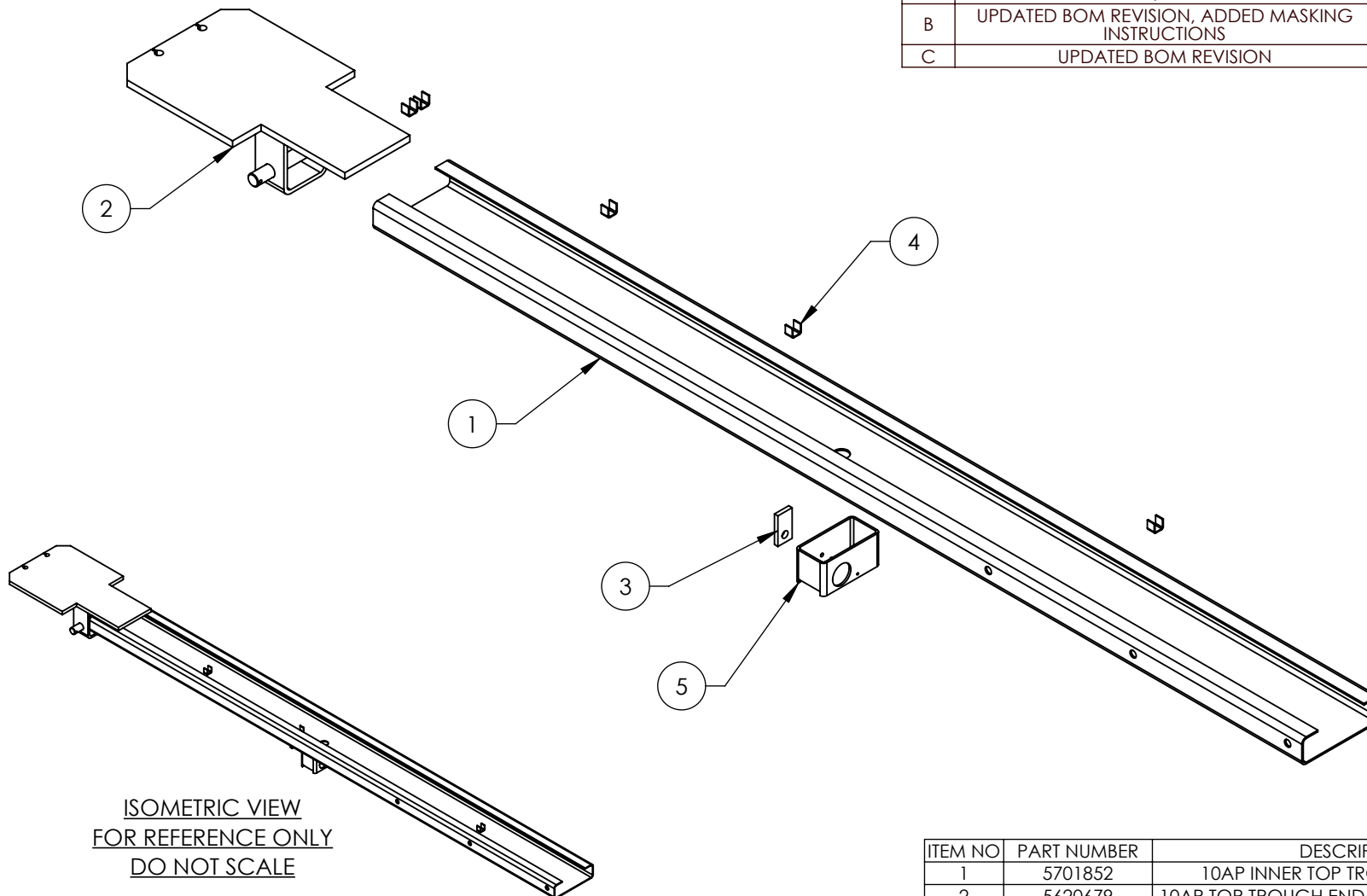
1. REFER TO MODEL FOR ADDITIONAL INFORMATION
2. BREAK AND DEBURR ALL SHARP EDGES 0.3mm
3. REMOVE ALL WELD SPLATTER
4. MASK PIN BEFORE PAINTING UP TO [B]
5. DIMENSIONS SHOWN ARE AFTER PAINTING
6. PAINT GRAY (RAL-7024) 20% GLOSS

NEXT ASSEMBLY
5216182

ITEM NO	PART NUMBER	DESCRIPTION	QTY	REV
1	5701851	10AP OUTER TOP TROUGH CHANNEL	1	A
2	5620679	10AP TOP TROUGH END PLATE SUBWELDMENT	1	D
3	5736550	2 POST MICROWITCH STOP BAR HINGE PLATE	1	C
4	5700699	SMALL HOSE RETAINER	1	A

DO NOT SCALE DRAWING		NAME	DATE	 1645 LEMONWOOD DR. SANTA PAULA, CA 93060	
DRAWN		CA	06/07/2022		
CHECKED		OR	02/03/2023	TITLE:	
DIMENSIONS ARE IN MM TOLERANCES: 0. = ±1.5 0.0 = ±0.5  SURFACE FINISH 1.6 ISO Ra µm FOR MACHINED SURFACES UNLESS OTHERWISE SPECIFIED		THIRD ANGLE PROJECTION		10AP OUTER TOP TROUGH WELDMENT	
				SIZE DWG. NO.	
<small>PROPRIETARY AND CONFIDENTIAL THE INFORMATION CONTAINED IN THIS DRAWING IS THE SOLE PROPERTY OF BENDPAK INC. ANY REPRODUCTION IN PART OR AS A WHOLE WITHOUT THE WRITTEN PERMISSION OF BENDPAK INC. IS PROHIBITED.</small>		A		5601854	
		SCALE: 1:8		SHEET 1 OF 3	

REVISION				
REV	DESCRIPTION	DATE	EDITED BY	ECO#
A	PRODUCTION RELEASE, DERIVED FROM 5601506	06/07/2022	CA	01417
B	UPDATED BOM REVISION, ADDED MASKING INSTRUCTIONS	10/03/2022	TM	01449
C	UPDATED BOM REVISION	01/30/2023	CA	01467



ISOMETRIC VIEW  
FOR REFERENCE ONLY  
DO NOT SCALE

WHERE USED  
10AP SERIES

**NOTE: UNLESS OTHERWISE SPECIFIED.**

1. REFER TO MODEL FOR ADDITIONAL INFORMATION
2. BREAK AND DEBURR ALL SHARP EDGES 0.3mm
3. REMOVE ALL WELD SPLATTER
4. MASK PIN BEFORE PAINTING UP TO [B]
5. DIMENSIONS SHOWN ARE AFTER PAINTING
6. PAINT GRAY (RAL-7024) 20% GLOSS

NEXT ASSEMBLY  
5216182

ITEM NO	PART NUMBER	DESCRIPTION	QTY	REV
1	5701852	10AP INNER TOP TROUGH CHANNEL	1	A
2	5620679	10AP TOP TROUGH END PLATE SUBWELDMENT	1	D
3	5737173	10AP MICROWITCH STOP BAR HINGE PLATE	1	A
4	5700699	SMALL HOSE RETAINER	5	A
5	5766145	10AP, D2, GP-7, XPR MICROSWITCH BOX	1	D

DO NOT SCALE DRAWING

DIMENSIONS ARE IN MM  
TOLERANCES:  
0. = ±1.5  
0.0 = ±0.5

SURFACE FINISH 1.6 ISO Ra µm  
FOR MACHINED SURFACES  
UNLESS OTHERWISE SPECIFIED

NAME DATE  
DRAWN CA 06/07/2022  
CHECKED OR 02/03/2023

THIRD ANGLE PROJECTION



PROPRIETARY AND CONFIDENTIAL  
THE INFORMATION CONTAINED IN THIS DRAWING IS  
THE SOLE PROPERTY OF BENDPAK INC. ANY  
REPRODUCTION IN PART OR AS A WHOLE WITHOUT  
THE WRITTEN PERMISSION OF BENDPAK INC. IS  
PROHIBITED.

**BendPak.**

1645 LEMONWOOD DR.  
SANTA PAULA, CA 93060

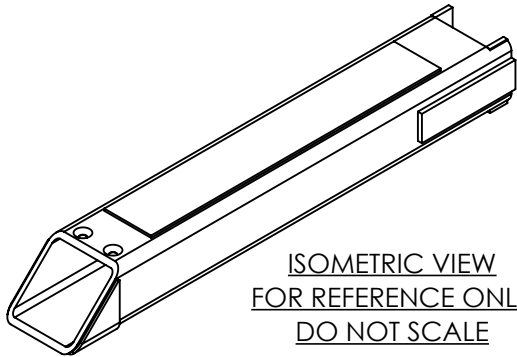
TITLE: 10AP INNER TOP  
TROUGH WELDMENT

SIZE DWG. NO. REV  
A 5601855 C

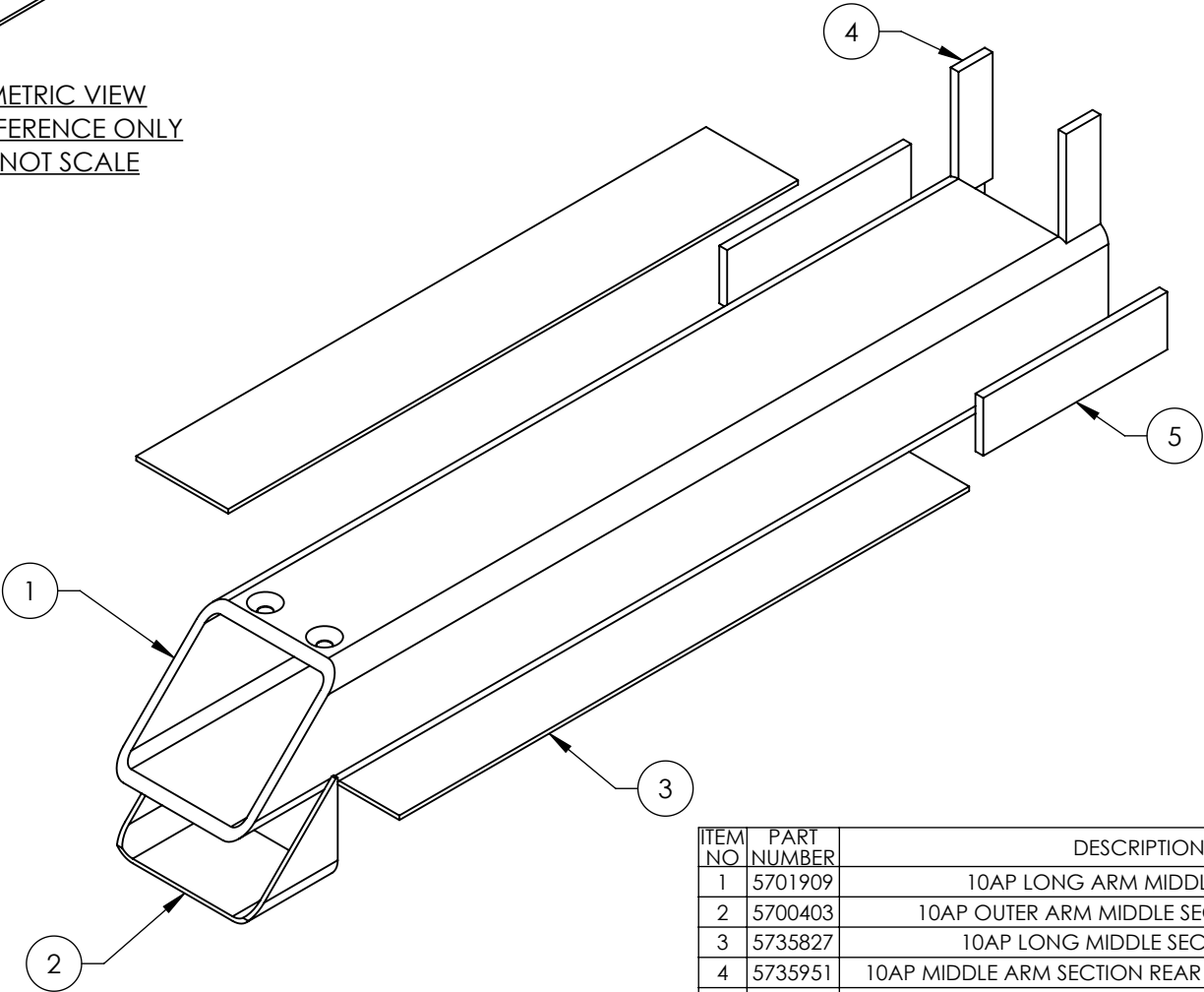
SCALE: 1:8

SHEET 1 OF 3

REVISION				
REV	DESCRIPTION	DATE	EDITED BY	ECO#
A	PRODUCTION RELEASE, DERIVED FROM 5601510	04/20/2023	TM	01488



ISOMETRIC VIEW  
FOR REFERENCE ONLY  
DO NOT SCALE





ITEM NO	PART NUMBER	DESCRIPTION	QTY	REV
1	5701909	10AP LONG ARM MIDDLE SECTION	1	A
2	5700403	10AP OUTER ARM MIDDLE SECTION SUPPORT	1	B
3	5735827	10AP LONG MIDDLE SECTION PLATE	2	C
4	5735951	10AP MIDDLE ARM SECTION REAR SPACER, LONG ARM	2	A
5	5735952	10AP MIDDLE ARM SECTION SIDE SPACER, LONG ARM	2	A

WHERE USED
10AP SERIES

**NOTE: UNLESS OTHERWISE SPECIFIED.**

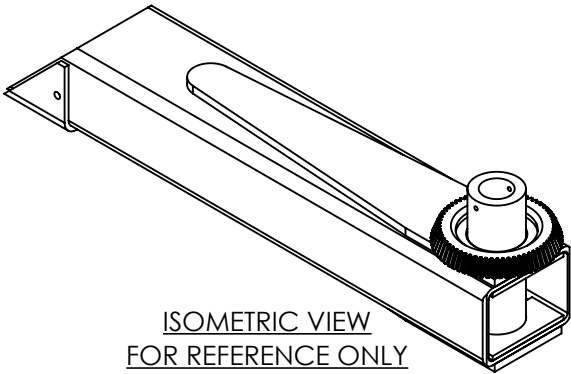
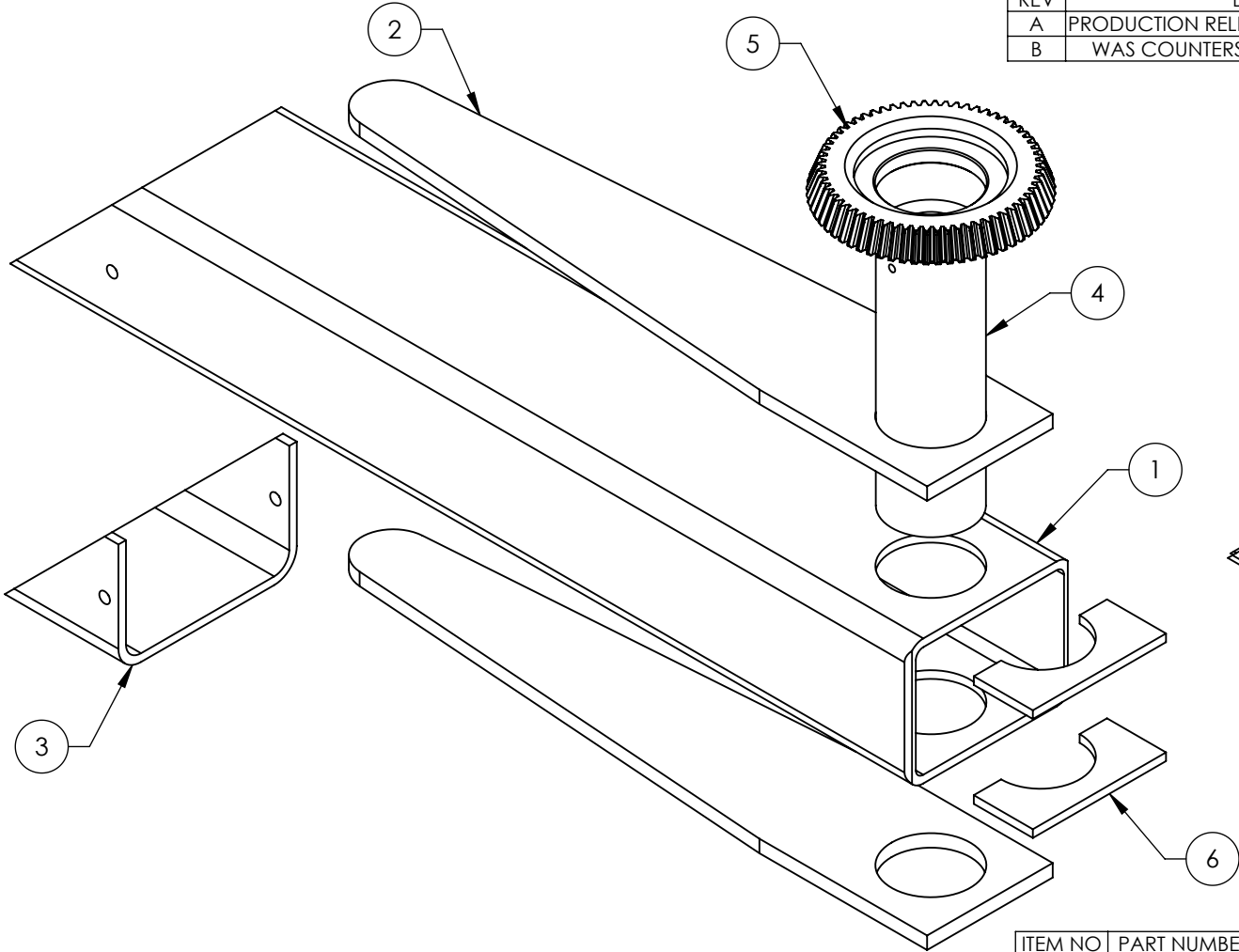
1. REFER TO MODEL FOR ADDITIONAL INFORMATION
2. BREAK AND DEBURR ALL SHARP EDGES 0.3mm
3. REMOVE ALL WELD SPLATTER

NEXT ASSEMBLY
5216216

DO NOT SCALE DRAWING		NAME	DATE	 1645 LEMONWOOD DR. SANTA PAULA, CA 93060
DIMENSIONS ARE IN MM TOLERANCES: 0. = ±1.5 0.0 = ±0.5  SURFACE FINISH 1.6 ISO Ra µm FOR MACHINED SURFACES UNLESS OTHERWISE SPECIFIED		DRAWN	TM	04/20/2023
		CHECKED	OR	04/28/2023
 THIRD ANGLE PROJECTION		TITLE:		10AP LONG ARM WELDMENT, MIDDLE SECTION
		SIZE DWG. NO.		REV
		A 5601936		A
		SCALE: 1:4		SHEET 1 OF 2

PROPRIETARY AND CONFIDENTIAL  
THE INFORMATION CONTAINED IN THIS DRAWING IS  
THE SOLE PROPERTY OF BENDPAK INC. ANY  
REPRODUCTION IN PART OR AS A WHOLE WITHOUT  
THE WRITTEN PERMISSION OF BENDPAK INC. IS  
PROHIBITED.

REVISION				
REV	DESCRIPTION	DATE	EDITED BY	ECO#
A	PRODUCTION RELEASE, DERIVED FROM 5601511	04/20/2023	TM	01488
B	WAS COUNTERSUNK NOW THROUGH HOLE	06/01/2023	CA	01492





ITEM NO	PART NUMBER	DESCRIPTION	QTY	REV
1	5701696	10AP LONG OUTER ARM SECTION	1	C
2	5737184	10AP OUTER ARM SECTION TOP STIFFENER	2	C
3	5700397	10AP OUTER ARM SECTION SUPPORT	1	A
4	5746495	ARM MOUNT TUBE, Ø38.2	1	C
5	5701702	10/12AP ARM RESTRAINT FULL CIRCLE GEAR	1	A
6	5601937-1	10AP OUTER ARM MOUNT TUBE GUSSET	2	-

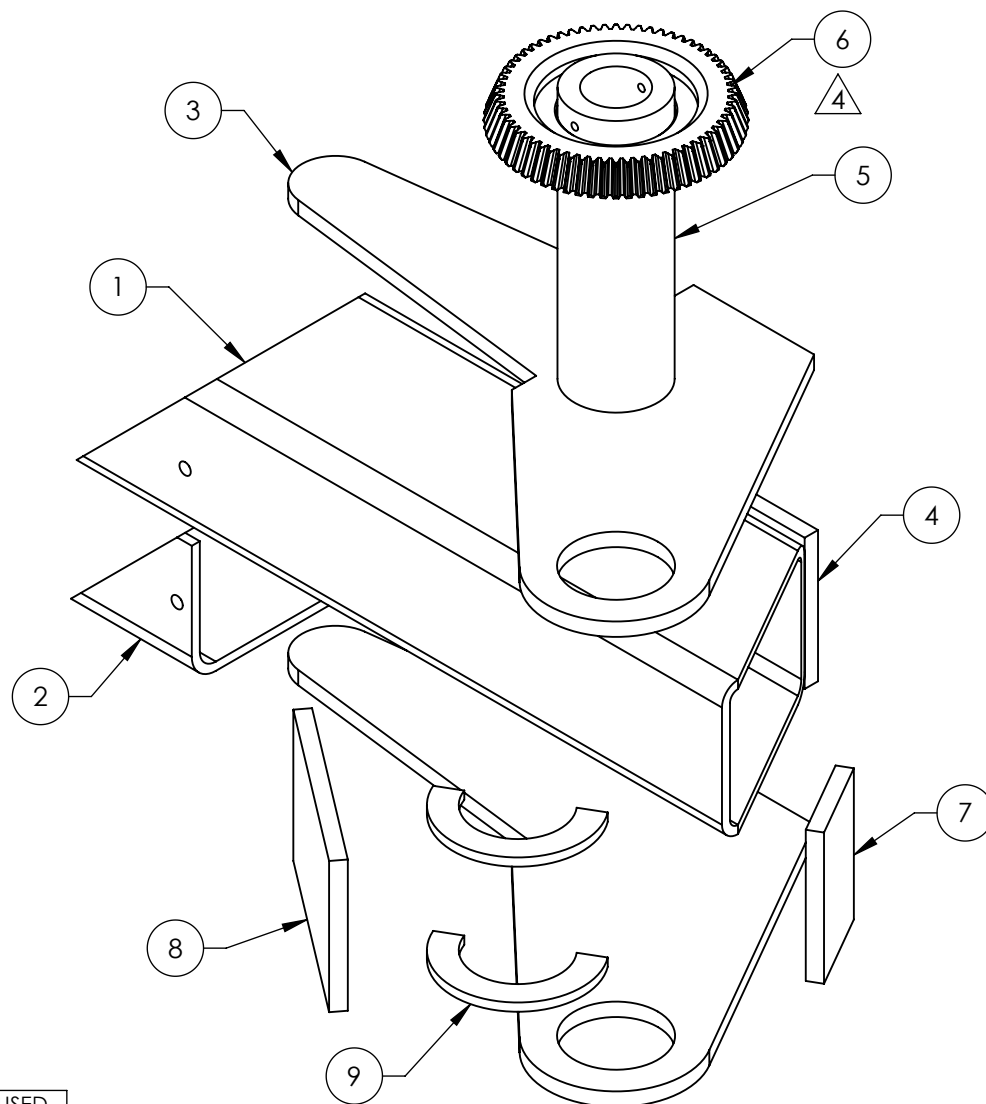
WHERE USED
10AP SERIES

**NOTE: UNLESS OTHERWISE SPECIFIED.**

- REFER TO MODEL FOR ADDITIONAL INFORMATION
- BREAK AND DEBURR ALL SHARP EDGES 0.3mm
- REMOVE ALL WELD SPLATTER

NEXT ASSEMBLY
5216216

DO NOT SCALE DRAWING		NAME	DATE	 1645 LEMONWOOD DR. SANTA PAULA, CA 93060	
DIMENSIONS ARE IN MM TOLERANCES: 0. = ±1.5 0.0 = ±0.5  SURFACE FINISH 1.6 ISO Ra µm FOR MACHINED SURFACES UNLESS OTHERWISE SPECIFIED		DRAWN	TM 04/20/2022		
		CHECKED		TITLE: 10AP LONG ARM WELDMENT, OUTER SECTION	
		THIRD ANGLE PROJECTION			
				SIZE DWG. NO.	REV
		PROPRIETARY AND CONFIDENTIAL THE INFORMATION CONTAINED IN THIS DRAWING IS THE SOLE PROPERTY OF BENDPAK INC. ANY REPRODUCTION IN PART OR AS A WHOLE WITHOUT THE WRITTEN PERMISSION OF BENDPAK INC. IS PROHIBITED.		A 5601937	B
				SCALE: 1:4	



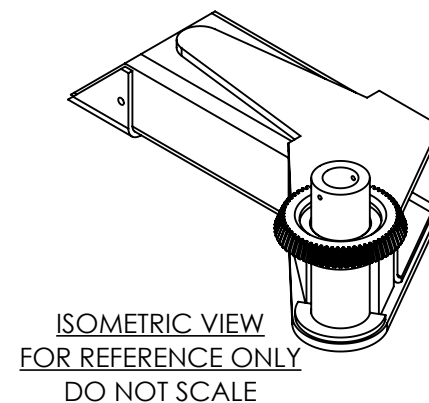
WHERE USED  
10AP SERIES

**NOTE: UNLESS OTHERWISE SPECIFIED.**

1. REFER TO MODEL FOR ADDITIONAL INFORMATION
2. BREAK AND DEBURR ALL SHARP EDGES 0.3mm
3. REMOVE ALL WELD SPLATTER
4. MASK TEETH BEFORE PAINTING
5. MASK BORE AND ALL THREADS BEFORE PAINTING
6. DIMENSIONS SHOWN ARE AFTER WELDING AND PAINTING
7. PAINT YELLOW (RAL-1018) 20% GLOSS

NEXT ASSEMBLY  
5216217

REVISION				
REV	DESCRIPTION	DATE	EDITED BY	ECO#
A	PRODUCTION RELEASE, DERIVED FROM 5601754	04/21/2023	TM	01488
B	WAS COUNTERSUNK NOW THROUGH HOLE, WAS 102.2 NOW Ø96.2, WAS 19.8 NOW 17.0	06/01/2023	CA	01492



ITEM NO	PART NUMBER	DESCRIPTION	QTY	REV
1	5701832	10AP ASYMMETRIC OUTER ARM, LEFT	1	A
2	5700397	10AP OUTER ARM SECTION SUPPORT	1	A
3	5701834	10AP ASYMMETRIC ARM EAR	2	B
4	5735909	10AP ASYMMETRIC ARM GUSSET, OUTSIDE	1	A
5	5746495	ARM MOUNT TUBE, Ø38.2	1	C
6	5701702	10/12AP ARM RESTRAINT FULL CIRCLE GEAR	1	A
7	5735953	10AP ASYMMETRIC ARM GUSSET, INSIDE 1	1	A
8	5735954	10AP ASYMMETRIC ARM GUSSET, INSIDE 2	1	A
9	5601939-1	OUTER ARM MOUNT TUBE GUSSET	2	-

DO NOT SCALE DRAWING

DIMENSIONS ARE IN MM  
TOLERANCES:

0. = ±1.5  
0.0 = ±0.5

SURFACE FINISH 1.6 ISO Ra µm  
FOR MACHINED SURFACES  
UNLESS OTHERWISE SPECIFIED

NAME	DATE
DRAWN TM	04/21/2023
CHECKED	
THIRD ANGLE PROJECTION	

PROPRIETARY AND CONFIDENTIAL  
THE INFORMATION CONTAINED IN THIS DRAWING IS  
THE SOLE PROPERTY OF BENDPAK INC. ANY  
REPRODUCTION IN PART OR AS A WHOLE WITHOUT  
THE WRITTEN PERMISSION OF BENDPAK INC. IS  
PROHIBITED.

**BendPak.**

1645 LEMONWOOD DR.  
SANTA PAULA, CA 93060

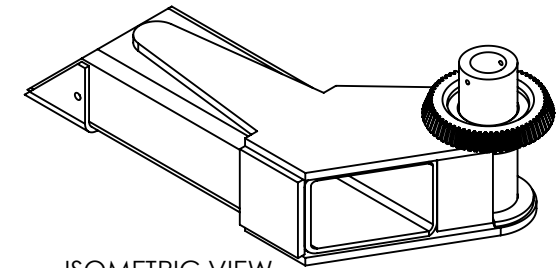
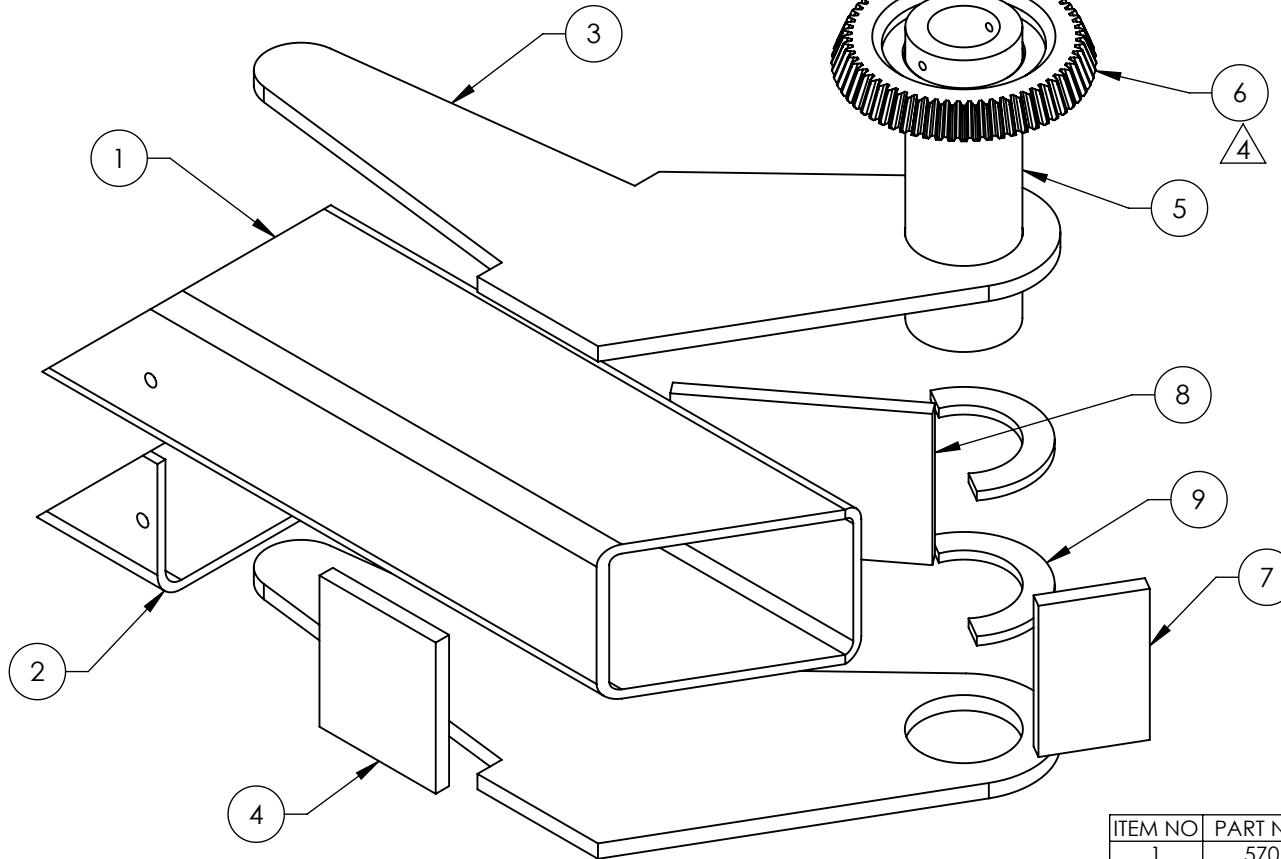
TITLE: 10AP ASYMMETRIC ARM  
WELDMENT, OUTER  
SECTION, LEFT

SIZE DWG. NO. REV  
A 5601938 B

SCALE: 1:10

SHEET 1 OF 3

REVISION				
REV	DESCRIPTION	DATE	EDITED BY	ECO#
A	PRODUCTION RELEASE, DERIVED FROM 5601755	04/24/2023	TM	01488
B	WAS COUNTERSUNK NOW THROUGH HOLE, WAS 102.2 NOW Ø96.2, WAS 19.8 NOW 17.0	06/01/2023	CA	01492



ISOMETRIC VIEW  
FOR REFERENCE ONLY  
DO NOT SCALE

WHERE USED  
10AP SERIES

# **NOTE: UNLESS OTHERWISE SPECIFIED.**

1. REFER TO MODEL FOR ADDITIONAL INFORMATION
2. BREAK AND DEBURR ALL SHARP EDGES 0.3mm
3. REMOVE ALL WELD SPLATTER
4. MASK TEETH BEFORE PAINTING
5. MASK BORE AND ALL THREADS BEFORE PAINTING
6. DIMENSIONS SHOWN ARE AFTER WELDING AND PAINTING
7. PAINT YELLOW (RAL-1018) 20% GLOSS

ITEM NO	PART NUMBER	DESCRIPTION	QTY	REV
1	5701833	10AP ASYMMETRIC OUTER ARM, RIGHT	1	A
2	5700397	10AP OUTER ARM SECTION SUPPORT	1	A
3	5701834	10AP ASYMMETRIC ARM EAR	2	B
4	5735909	10AP ASYMMETRIC ARM GUSSET, OUTSIDE	1	A
5	5746495	ARM MOUNT TUBE, Ø38.2	1	C
6	5701702	10/12AP ARM RESTRAINT FULL CIRCLE GEAR	1	A
7	5735953	10AP ASYMMETRIC ARM GUSSET, INSIDE 1	1	A
8	5735954	10AP ASYMMETRIC ARM GUSSET, INSIDE 2	1	A
9	5601939-1	OUTER ARM MOUNT TUBE GUSSET	2	-

DO NOT SCALE DRAWING

DIMENSIONS ARE IN MM  
TOLERANCES:  
0. = ±1.5  
0.0 = ±0.5

SURFACE FINISH 1.6 ISO Ra µm  
FOR MACHINED SURFACES  
UNLESS OTHERWISE SPECIFIED

NAME DATE  
DRAWN TM 04/24/2023

CHECKED

THIRD ANGLE PROJECTION



PROPRIETARY AND CONFIDENTIAL  
THE INFORMATION CONTAINED IN THIS DRAWING IS  
THE SOLE PROPERTY OF BENDPAK INC. ANY  
REPRODUCTION IN PART OR AS A WHOLE WITHOUT  
THE WRITTEN PERMISSION OF BENDPAK INC. IS  
PROHIBITED.

**BendPak.**  
1645 LEMONWOOD DR.  
SANTA PAULA, CA 93060

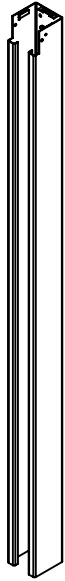
TITLE: 10AP ASYMMETRIC ARM  
WELDMENT, OUTER  
SECTION, RIGHT

SIZE DWG. NO. REV  
A 5601939 B

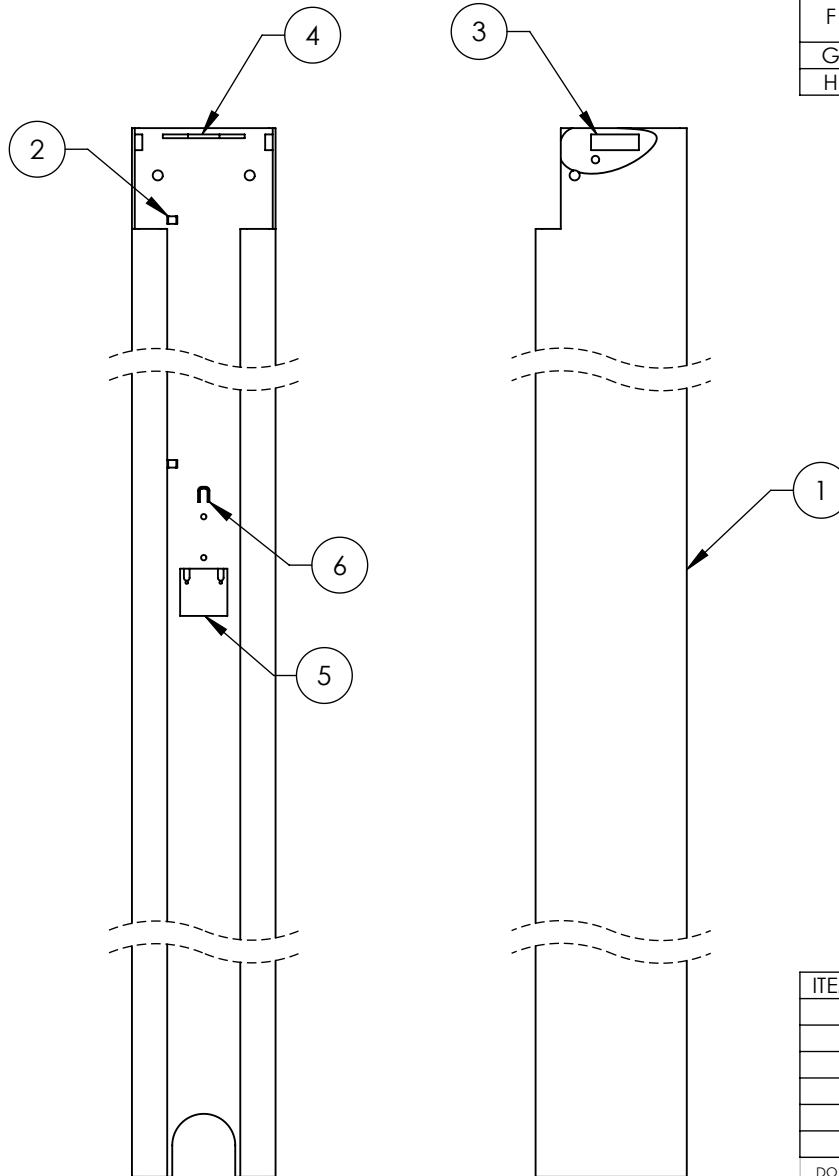
SCALE: 1:10

SHEET 1 OF 3

NEXT ASSEMBLY  
5216218



ISOMETRIC VIEW  
FOR REFERENCE ONLY  
DO NOT SCALE



WHERE USED
10APX
10APX-181



**NOTE: UNLESS OTHERWISE SPECIFIED.**

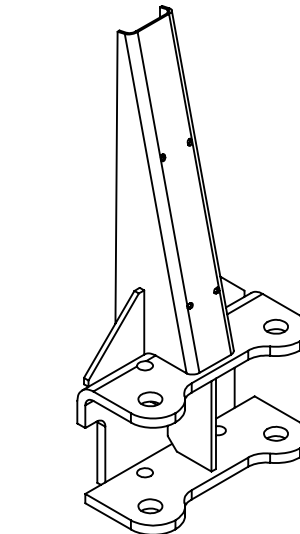
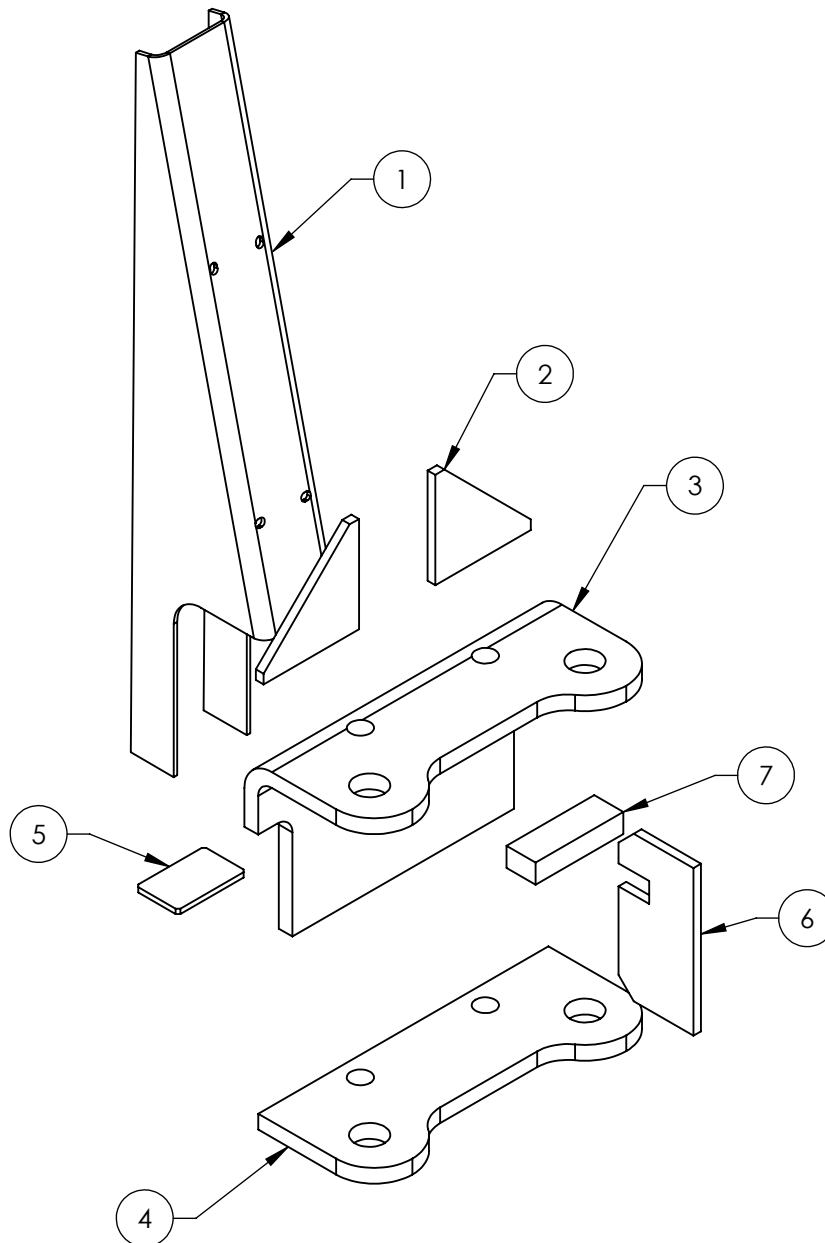
1. REFER TO MODEL FOR ADDITIONAL INFORMATION
2. BREAK AND DEBURR ALL SHARP EDGES 0.3mm
3. REMOVE ALL WELD SPLATTER

NEXT ASSEMBLY  
5601851

REVISION				
REV	DESCRIPTION	DATE	EDITED BY	ECO#
F	WAS 1994.5 NOW 1992.5 (pg2), UPDATED BOM REVISIONS	11/29/2021	TM	01361
G	UPDATED BOM REVISION	04/15/2022	CA	01406
H	REMOVED (3) 5700699	05/24/2022	CA	01415

ITEM NO	PART NUMBER	DESCRIPTION	QTY	REV
1	5701763	10APX OFF SIDE BARE POST	1	D
2	5700699	SMALL HOSE RETAINER	3	A
3	5735700	10AP, D2, XPR TOP TROUGH SUPPORT	2	D
4	5701785	10AP TOP TROUGH TIE PLATE	1	A
5	5735831	10AP SAFETY LATCH SUPPORT BLOCK	1	E
6	5701802	10AP SAFETY ROLLER CLAMP	1	B

DO NOT SCALE DRAWING		NAME	DATE			
DIMENSIONS ARE IN MM TOLERANCES: 0. = ±1.5 0.0 = ±0.5		DRAWN	CA	1645 LEMONWOOD DR. SANTA PAULA, CA 93060		
		CHECKED	OR	06/03/2022		
		THIRD ANGLE PROJECTION		TITLE:		
SURFACE FINISH 1.6 ISO Ra µm FOR MACHINED SURFACES UNLESS OTHERWISE SPECIFIED				10APX OFF SIDE POST SUBWELDMENT		
		<p>PROPRIETARY AND CONFIDENTIAL</p> <p>THE INFORMATION CONTAINED IN THIS DRAWING IS THE SOLE PROPERTY OF <b>BENDPAK INC.</b> ANY REPRODUCTION IN PART OR AS A WHOLE WITHOUT THE WRITTEN PERMISSION OF <b>BENDPAK INC.</b> IS PROHIBITED.</p>		SIZE	DWG. NO.	REV
				A	5620689	H
Y	SCALE: 1:12				SHEET 1 OF 3	



ISOMETRIC VIEW  
FOR REFERENCE ONLY  
DO NOT SCALE

REVISION				
REV	DESCRIPTION	DATE	EDITED BY	ECO#
A	PRODUCTION RELEASE, DERIVED FROM 5620674	06/07/2022	CA	01417
B	5736259 WAS 12.0 NOW FLUSH, UPDATED BOM REVISION	09/06/0222	TM	01445
C	UPDATED BOM REVISION	12/12/2022	TM	01460


ITEM NO	PART NUMBER	DESCRIPTION	QTY	REV
1	5701850	10AP LIFT HEAD GUSSET	1	C
2	5736259	10AP, D2, GP, XPR LIFT HEAD SIDE GUSSET	2	B
3	5701690	10AP LIFT HEAD TOP ARM PLATE	1	C
4	5737169	10AP LIFT HEAD BOTTOM ARM PLATE	1	B
5	5731074	10AP LIFT HEAD CLOSEOUT GUSSET	1	A
6	5737168	10AP LIFT HEAD PLATE SPACER	1	B
7	5735869	10AP LIFT HEAD MID SUPPORT	1	A

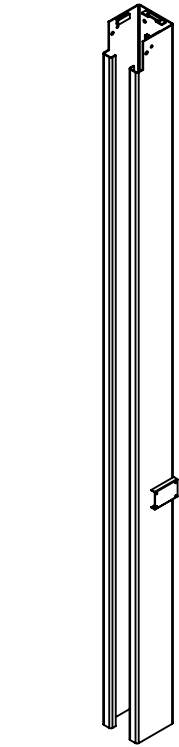
WHERE USED  
10AP SERIES

**NOTE: UNLESS OTHERWISE SPECIFIED.**

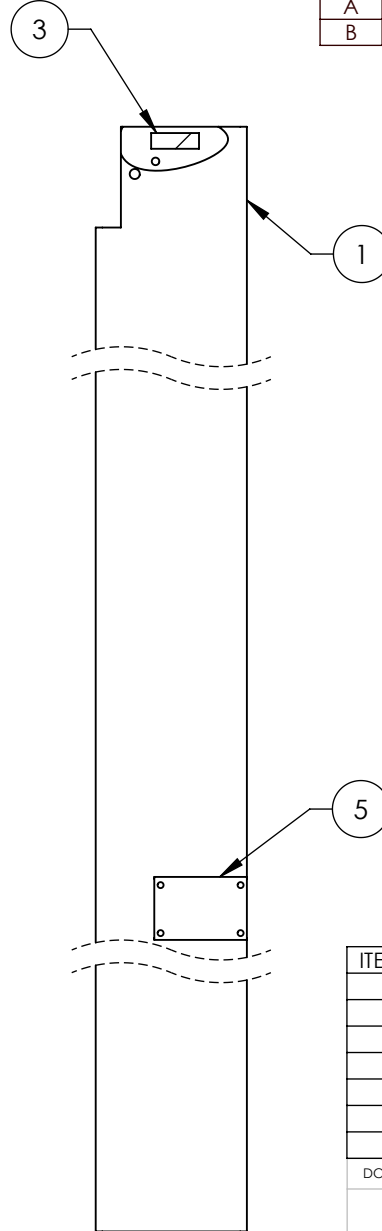
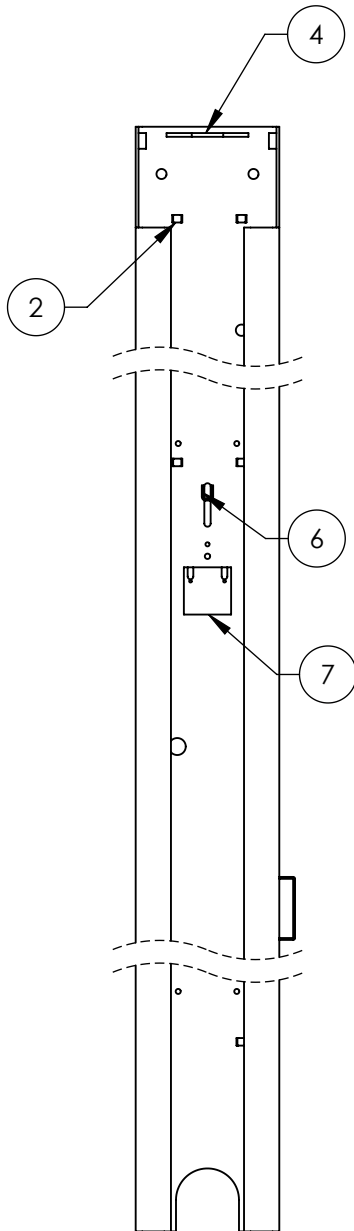
- REFER TO MODEL FOR ADDITIONAL INFORMATION
- BREAK AND DEBURR ALL SHARP EDGES 0.3mm
- REMOVE ALL WELD SPLATTER

NEXT ASSEMBLY
5601852
5601853

DO NOT SCALE DRAWING		NAME	DATE	<div><div>BP</div><div>BendPak®</div></div>		
DIMENSIONS ARE IN MM TOLERANCES:  0. = ±1.5 0.0 = ±0.5		DRAWN	CA	06/07/2022		
		CHECKED	OR	12/15/2022		
SURFACE FINISH 1.6 ISO Ra µm FOR MACHINED SURFACES UNLESS OTHERWISE SPECIFIED		THIRD ANGLE PROJECTION		TITLE:  10AP LIFT HEAD GUSSET SUBWELDMENT		
						
7		PROPRIETARY AND CONFIDENTIAL		SIZE	DWG. NO.	REV
		THE INFORMATION CONTAINED IN THIS DRAWING IS THE SOLE PROPERTY OF <b>BENDPAK INC.</b> ANY REPRODUCTION IN PART OR AS A WHOLE WITHOUT THE WRITTEN PERMISSION OF <b>BENDPAK INC.</b> IS PROHIBITED.		A	5620763	C
				SCALE: 1:7		SHEET 1 OF 3



ISOMETRIC VIEW  
FOR REFERENCE ONLY  
DO NOT SCALE



REVISION				
REV	DESCRIPTION	DATE	EDITED BY	ECO#
A	PRODUCTION RELEASE, DERIVED FROM 5620688	04/13/2022	CA	01406
B	ADDED (1) 5700699	11/30/2022	CA	01458


ITEM NO	PART NUMBER	DESCRIPTION	QTY	REV
1	5701853	10APX POWER SIDE BARE POST	1	A
2	5700699	SMALL HOSE RETAINER	6	A
3	5735700	10AP, D2, XPR TOP TROUGH SUPPORT	2	D
4	5701785	10AP TOP TROUGH TIE PLATE	1	A
5	5700001	MOUNTING BRACKET	1	B
6	5701802	10AP SAFETY ROLLER CLAMP	1	B
7	5735831	10AP SAFETY LATCH SUPPORT BLOCK	1	E

WHERE USED
10APX
10APX-181

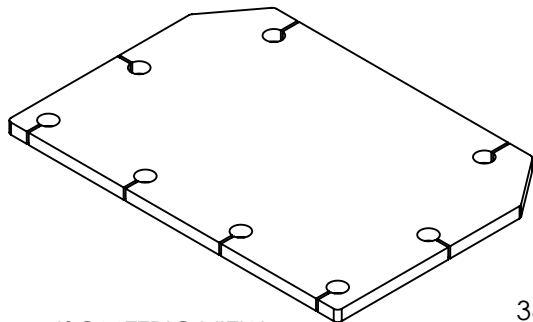
**NOTE: UNLESS OTHERWISE SPECIFIED.**

- REFER TO MODEL FOR ADDITIONAL INFORMATION
- BREAK AND DEBURR ALL SHARP EDGES 0.3mm
- REMOVE ALL WELD SPLATTER

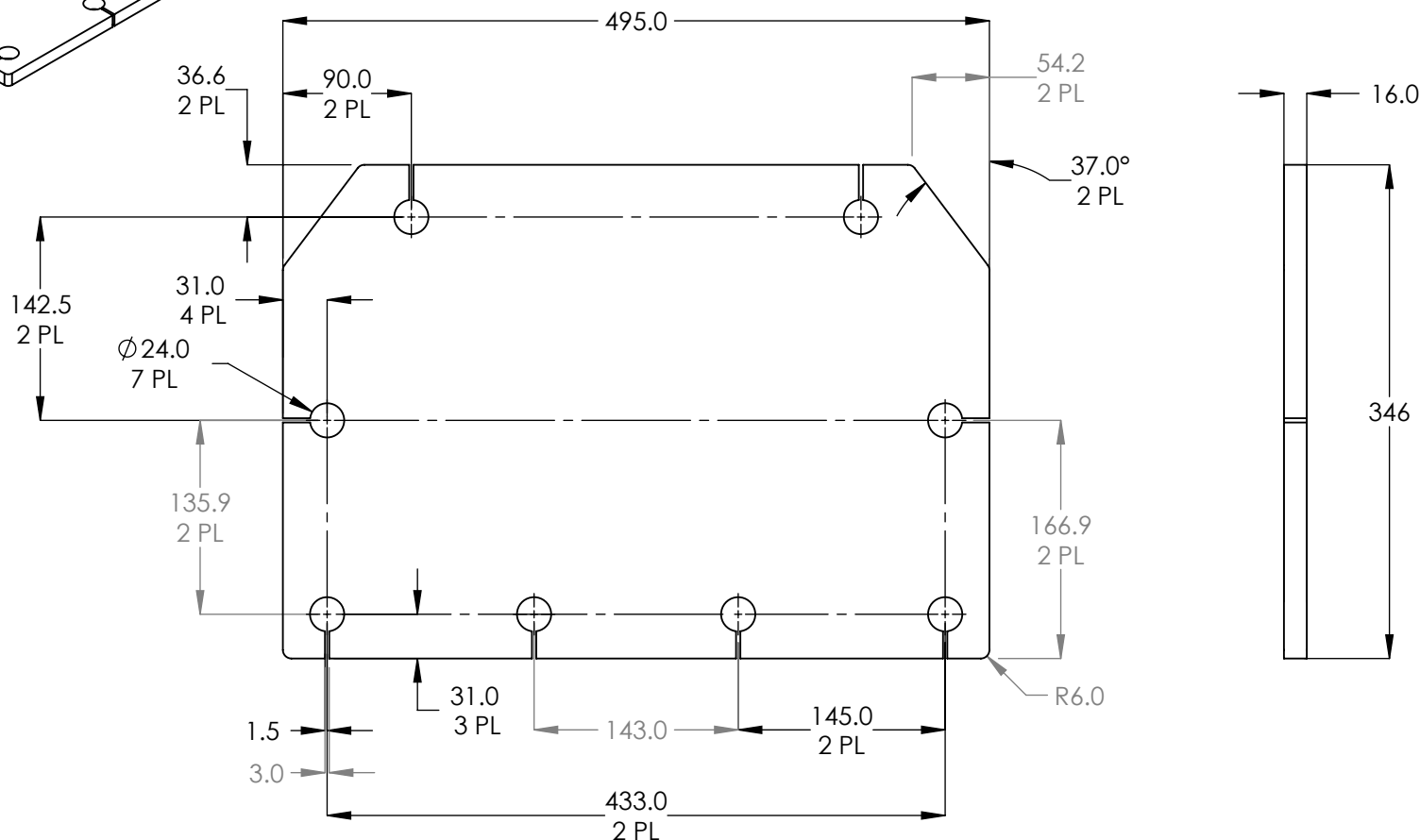
NEXT ASSEMBLY  
5601812

DO NOT SCALE DRAWING			NAME	DATE
DIMENSIONS ARE IN MM TOLERANCES:  0. = ±1.5 0.0 = ±0.5	DRAWN		CA	03/31/2022
	CHECKED			
	THIRD ANGLE PROJECTION			
SURFACE FINISH 1.6 ISO Ra µm FOR MACHINED SURFACES UNLESS OTHERWISE SPECIFIED				
	PROPRIETARY AND CONFIDENTIAL THE INFORMATION CONTAINED IN THIS DRAWING IS THE SOLE PROPERTY OF <b>BENDPAK INC.</b> ANY REPRODUCTION IN PART OR AS A WHOLE WITHOUT THE WRITTEN PERMISSION OF <b>BENDPAK INC.</b> IS PROHIBITED.			

1645 LEMONWOOD DR. SANTA PAULA, CA 93060		
TITLE: 10APX POWER SIDE POST SUBWELDMENT		
SIZE DWG. NO.	REV	
A 5620770	B	
SCALE: 1:12		SHEET 1 OF 3



ISOMETRIC VIEW  
FOR REFERENCE ONLY  
DO NOT SCALE



WHERE USED  
10AP SERIES

# **NOTE: UNLESS OTHERWISE SPECIFIED.**

1. REFER TO MODEL FOR ADDITIONAL INFORMATION
2. BREAK AND DEBURR ALL SHARP EDGES 0.3mm
3. **MATERIAL:** HR ASTM A36 OR Q235 GB/T 700

NEXT ASSEMBLY
5601800
5601812
5601850
5601581

REVISION				
REV	DESCRIPTION	DATE	EDITED BY	ECO#
A	PRODUCTION RELEASE, DERIVED FROM 5737179	07/06/2022	CA	01417
B	WAS Ø22.0 NOQ Ø24.0	04/20/2023	TM	01488

DO NOT SCALE DRAWING		NAME	DATE
DRAWN		CA	06/30/2022
CHECKED		OR	04/28/2023
THIRD ANGLE PROJECTION			
DIMENSIONS ARE IN MM TOLERANCES: MACHINE TO 0 = ±1.5 0.0 = ±0.5 0.00 = ±0.13		<b>BP BendPak.</b> 1645 LEMONWOOD DR. SANTA PAULA, CA 93060	
SURFACE FINISH 1.6 Ra µm FOR MACHINED SURFACES UNLESS OTHERWISE SPECIFIED		TITLE: 10AP BASE PLATE	
PROPRIETARY AND CONFIDENTIAL THE INFORMATION CONTAINED IN THIS DRAWING IS THE SOLE PROPERTY OF BENDPAK INC. ANY REPRODUCTION IN PART OR AS A WHOLE WITHOUT THE WRITTEN PERMISSION OF BENDPAK INC. IS PROHIBITED.		SIZE DWG. NO. <b>A</b> 5731073	REV B
SCALE: 1:5		SHEET 1 OF 1	

## PART SPECIFICATION FORM (STANDARD)

<b>BENDPAK Number:</b>	5900265
<b>MRP Description:</b>	10AP INSTALLATION MANUAL
<b>Date:</b>	04/26/2023
<b>ECO :</b>	---

### 1. Engineering Specification

#### Application:

INSTALLATION MANUAL

#### Detailed Description:

#### Print Settings

Unless otherwise specified, use these settings for printing BendPak manuals:

<b>Size:</b>	A4 (210 to 297 mm), 8.5 by 11 inches (216 to 279 mm), or between
<b>Color:</b>	Black and White
<b>Binding:</b>	Saddle Stitched
<b>Paper:</b>	100 to 120 gsm (27 to 32 pound), uncoated

**BendPak.**

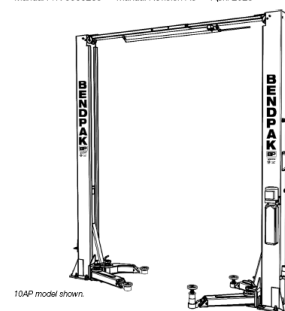
1645 Lemonwood Dr.  
Santa Paula, CA 93060 USA  
Tel/Fax: (805) 255-2263  
Telephone: (805) 933-9970  
bendpak.com

#### Clear Floor Two-Post Lifts Installation and Operation Manual

Manual P/N 5900265 — Manual Revision A9 — April 2023

#### Models:

- 10AP
- 10AP-168
- 10APX
- 10APX-161



10AP model shown.

Designed and engineered by BendPak Inc. in Southern California, USA. Made in China.

#### **⚠ DANGER**

**IMPORTANT Safety Instructions, save these instructions! Read the entire contents of this manual before using this product. Failure to follow the instructions and safety precautions in this manual can result in severe injury or death. Make sure all other operators also read this manual. Keep the manual near the product for future reference. By proceeding with setup and operation, you agree that you fully understand the contents of this manual and assume full responsibility for product use.**

### 2. Vendor Information (Or for Reference)

Approved Vendor	Vendor Part #	Contact #	Preferred Vendor
1)			
OR BENDPAK ENGINEERING APPROVED EQUIVALENT			