

# Service Manual

## SERVICE PARTS & DIAGRAMS

### BENDPAK HDS-35

PRODUCT SKU  
**5175166**

DRAWING Nº  
**5260071**

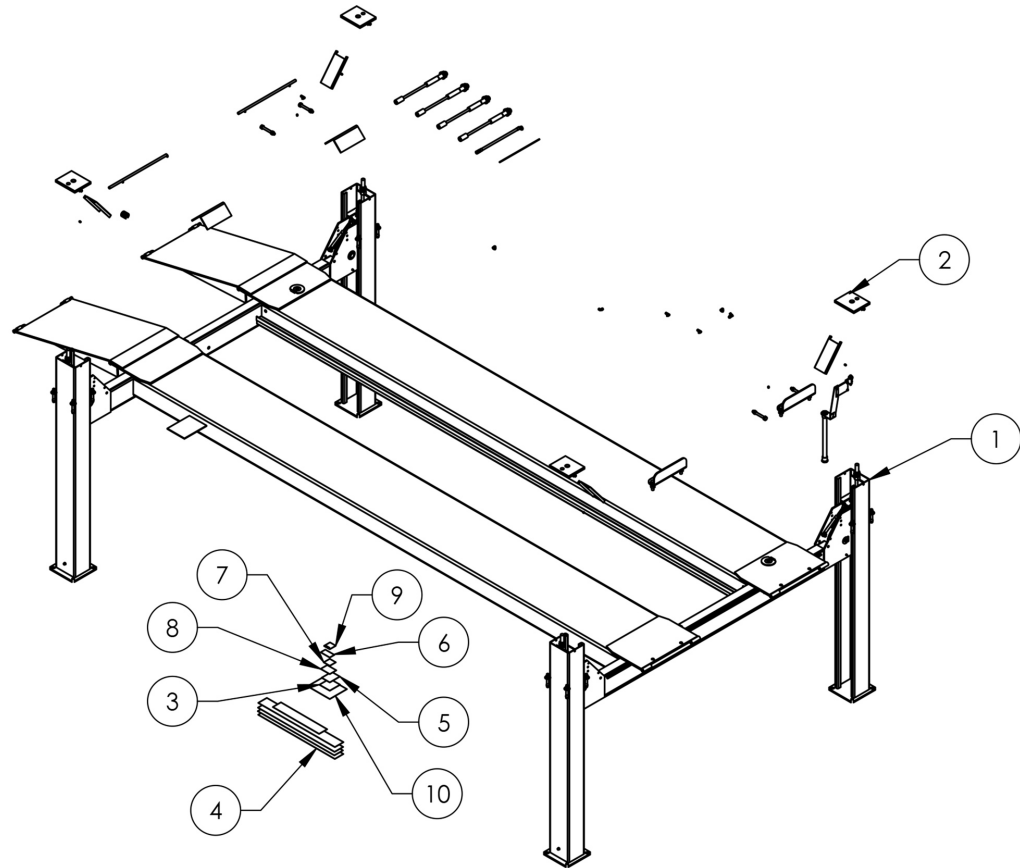
CATEGORY  
**Four Post Lift**

REV  
**Version K**

DATE  
**12.09.2022**

**BendPak.**

This guide is a troubleshooting reference used for maintaining and servicing your Bend Pak product. It provides comprehensive information on identifying serviceable parts and components and assists in troubleshooting problems and performing assembly /disassembly procedures.



**BendPak, Inc. Corporate Office**  
1645 Lemonwood Drive  
Santa Paula, CA 93060 USA  
Toll Free US/Canada: 1-800-253-2363  
Fax: 1-805-933-9160  
info@bendpak.com

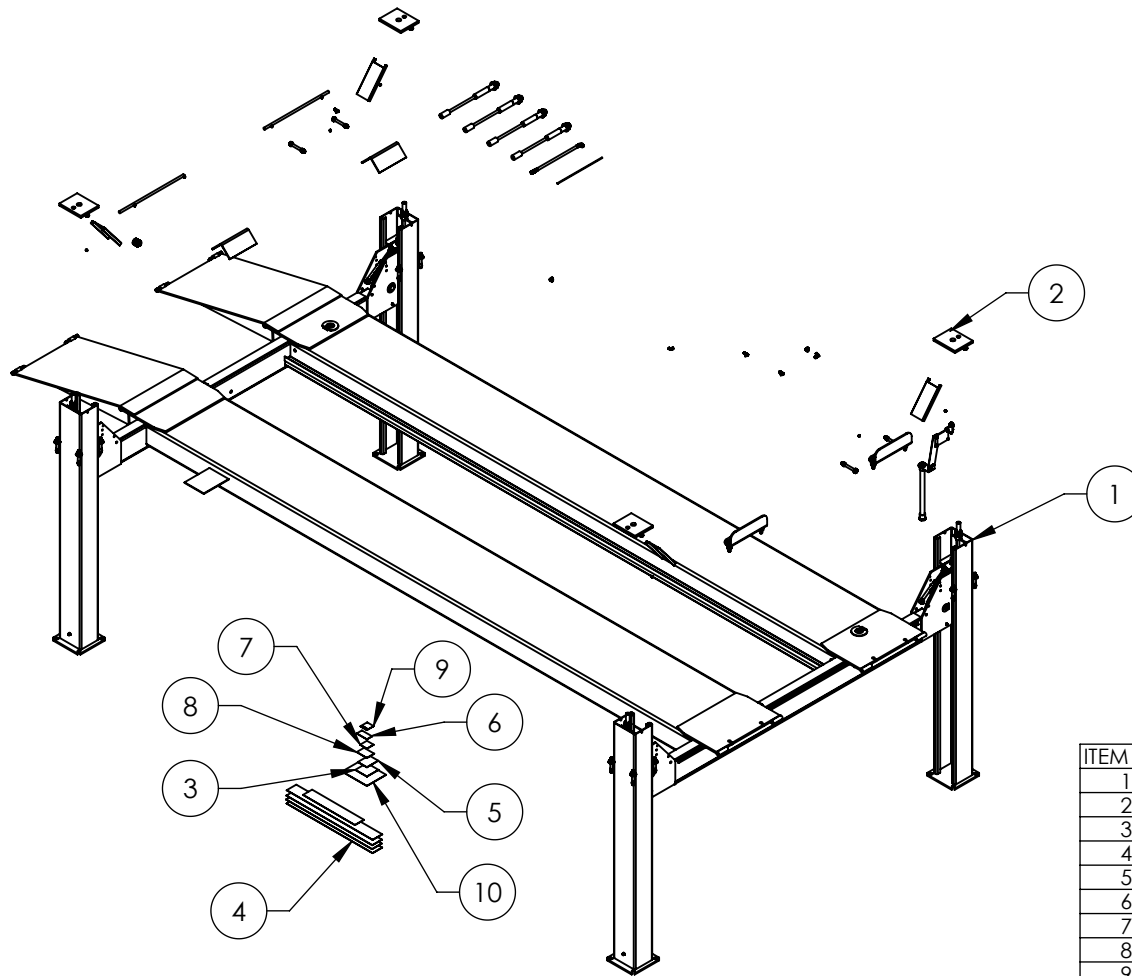
**Customer Service Desk / Warranty**  
Customer Service Representatives  
Office Tel: 1-805-933-9970  
Toll Free US/Canada: 1-800-253-2363  
Fax: 1-805-933-9160  
customerservice@bendpak.com

**Parts Orders**  
Customer Service Representatives  
Office Tel: 1-805-933-9970  
Toll Free US/Canada: 1-800-253-2363  
Fax: 1-805-933-9160  
parts@bendpak.com



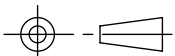
**Domestic Sales & Service**  
USA Sales Representatives  
Office Tel: 1-805-933-9970  
Toll Free US/Canada: 1-800-253-2363  
Fax: 1-805-933-9160  
sales@bendpak.com

**International Sales & Service**  
Office Tel: 1-805-933-9970  
Exports Dept: 1-805-933-9970 EXT. 192  
Ext. Toll Free US/Canada: 1-800-253-2363  
Fax: 1-805-933-9160  
bpkexports@bendpak.com

REVISION				
REV	DESCRIPTION	DATE	EDITED BY	ECO#
H	ADDED 5905685, UPDATED BOM REVISIONS	05/11/2017	TS	00829
J	ADDED 5905651 AND 5905652, REMOVED 5905103, UPDATED BOM REVISIONS	01/12/2018	TM	00909
K	ADDED 5905103, REMOVED 5905651, UPDATED BOM REVISIONS	02/14/2018	TM	00927

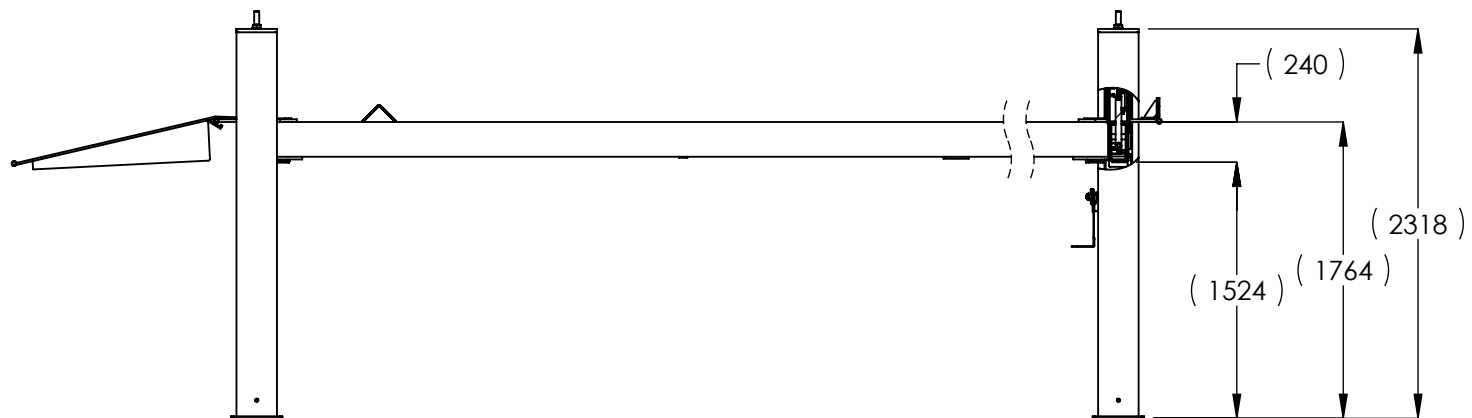
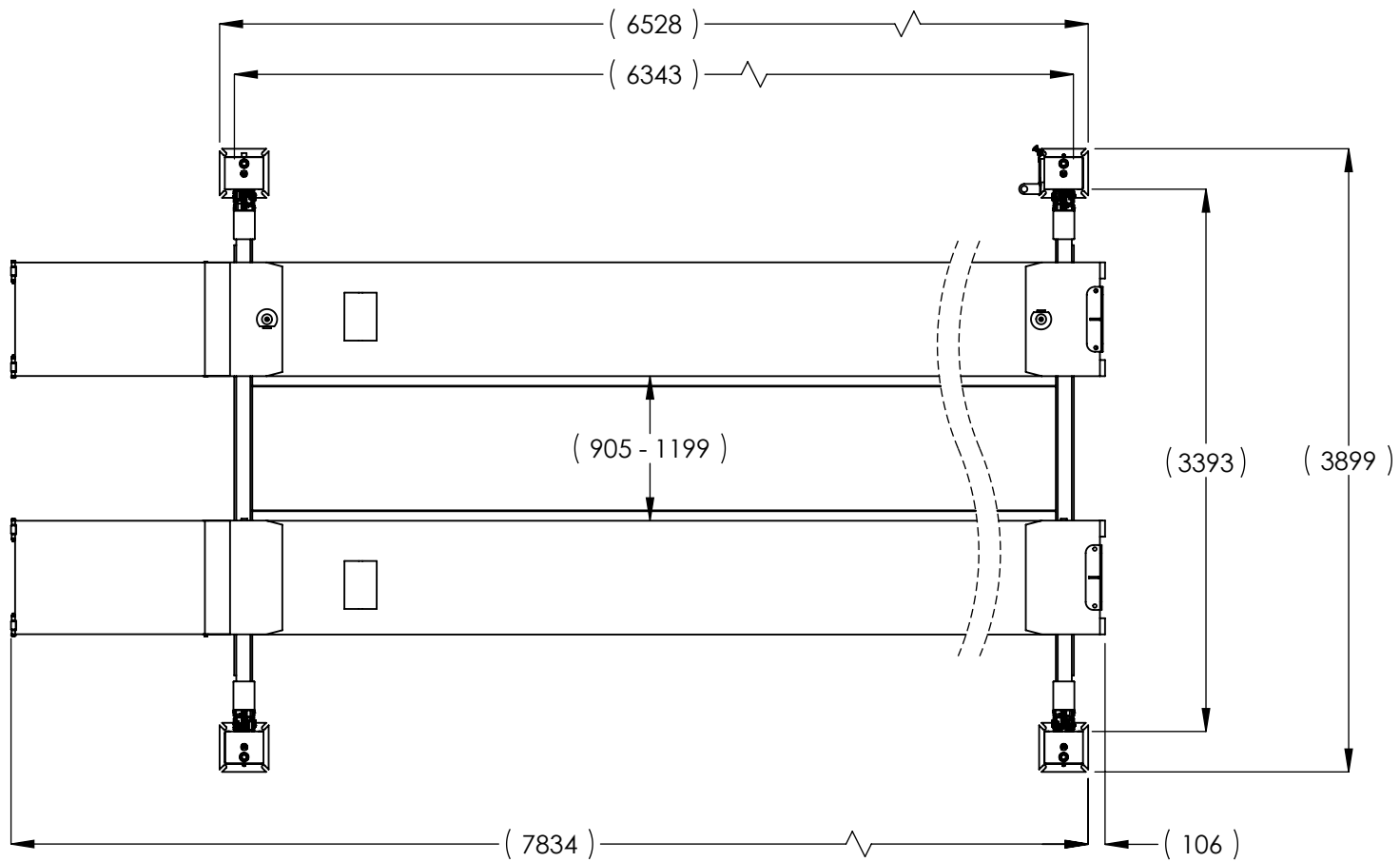


ITEM NO	PART NUMBER	DESCRIPTION	QTY	REV
1	5245015	HDS-35 LIFT SUPERSTRUCTURE	1	K
2	5250177	PARTS BOX HDS-35	1	G
3	5905465	MANUFACTURER LABEL	1	--
4	5905200	4 POST DECAL KIT, LESS ALI	1	B
5	5905408	MAX CAP DANGER 35K	1	--
6	5905940	PRODUCT DATA LABEL	1	--
7	5905953	5905953-2015_SERIAL_TAG-D	1	--
8	5905685	MAX CAP NRTL DANGER 35K	1	--
9	5905652	LABEL; ALCTV GOLD LABEL, CANADA; MET LABS	1	--
10	5905103	WARNING ALI/WL 200	1	--

DO NOT SCALE DRAWING		NAME		DATE		<div></div>			
DIMENSIONS ARE IN MM <div></div>		DRAWN		TM		09/22/2014			
		CHECKED		CA		4/6/2018			
		THIRD ANGLE PROJECTION		<div></div>		TITLE:		HDS-35 PRODUCTION LIFT VER C (CE CERT)	
		<div>PROPRIETARY AND CONFIDENTIAL</div> <div>THE INFORMATION CONTAINED IN THIS DRAWING IS THE SOLE PROPERTY OF <b>BENDPAK INC.</b> ANY REPRODUCTION IN PART OR AS A WHOLE WITHOUT THE WRITTEN PERMISSION OF <b>BENDPAK INC.</b> IS PROHIBITED.</div>		SIZE		DWG. NO.		REV	
				<div><b>A</b></div>		5260071		K	
				SCALE: 1:60		SHEET 1 OF 2			

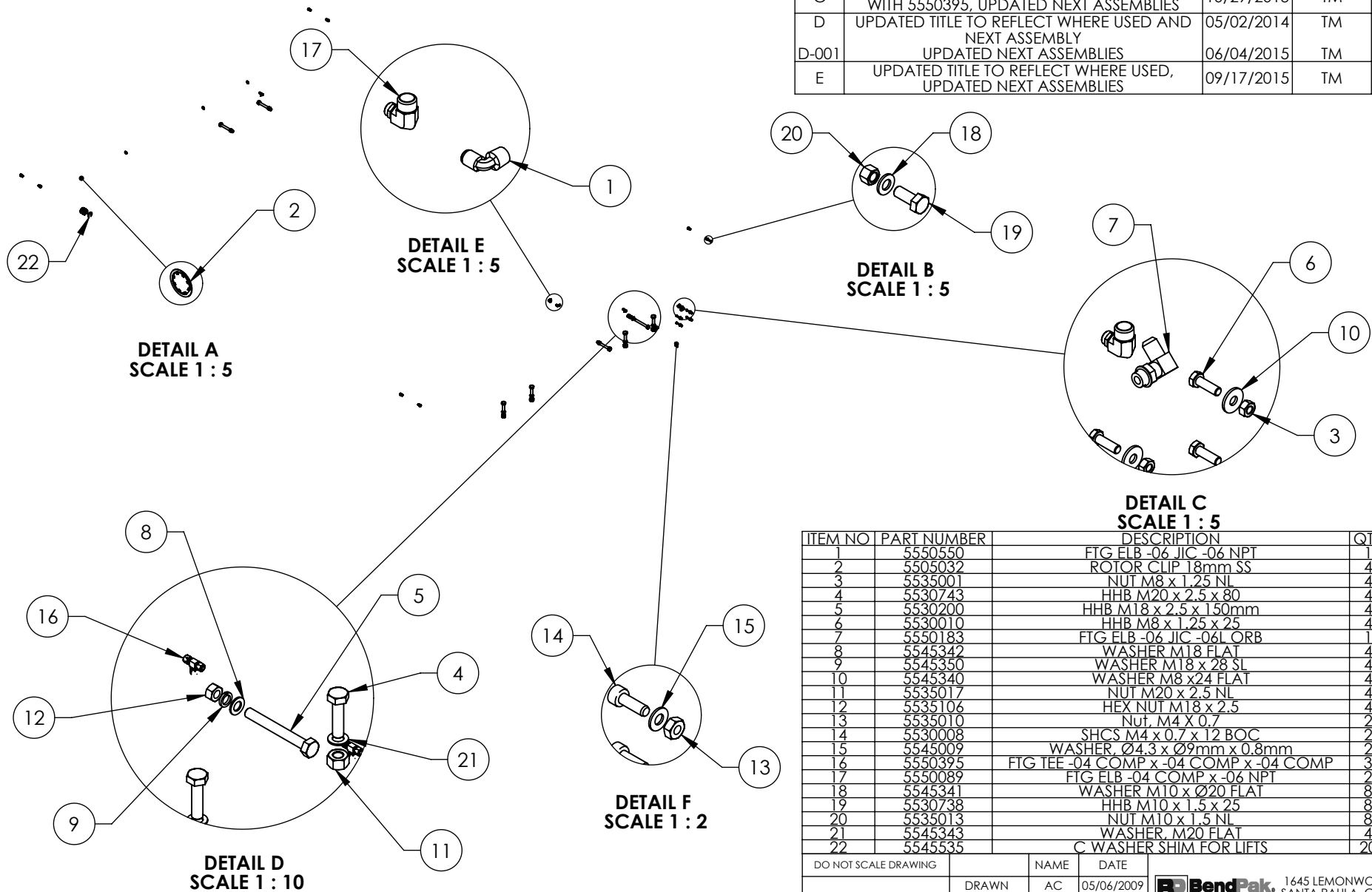
**NOTE: UNLESS OTHERWISE SPECIFIED.**

1. SEE SHIPPING INSTRUCTIONS FOR FINAL PACKAGING
2. SEE ATTACHED LABEL PLACEMENT SHEET



<b>BP BendPak.</b> 1645 LEMONWOOD DR. SANTA PAULA, CA 93060		
TITLE: HDS-35 PRODUCTION LIFT VER C (CE CERT)		
SIZE	DWG. NO.	REV
<b>A</b>	5260071	K
SCALE: 1:45		SHEET 2 OF 2

REVISION		DATE	EDITED BY	ECO#
REV	DESCRIPTION			
C	REPLACED 5550004 WITH 5550089, 5550489 WITH 5550395, UPDATED NEXT ASSEMBLIES	10/29/2013	TM	00593
D	UPDATED TITLE TO REFLECT WHERE USED AND NEXT ASSEMBLY	05/02/2014	TM	00646
D-001	UPDATED NEXT ASSEMBLIES	06/04/2015	TM	00683
E	UPDATED TITLE TO REFLECT WHERE USED, UPDATED NEXT ASSEMBLIES	09/17/2015	TM	00724



ITEM NO	PART NUMBER	DESCRIPTION	QTY	REV
1	5550550	FTG FLB -06 JIC -06 NPT	1	--
2	5505032	ROTOR CLIP 18mm SS	4	--
3	5535001	NUT M8 x 1.25 NL	4	--
4	5530743	HHB M20 x 2.5 x 80	4	--
5	5530200	HHB M18 x 2.5 x 150mm	4	--
6	5530010	HHB M8 x 1.25 x 25	4	--
7	5550183	FTG ELB -06 JIC -06L ORB	1	--
8	5545342	WASHER M18 FLAT	4	--
9	5545350	WASHER M18 x 28 SL	4	--
10	5545340	WASHER M8 x24 FLAT	4	--
11	5535017	NUT M20 x 2.5 NL	4	--
12	5535106	HEX NUT M18 x 2.5	4	--
13	5535010	Nut, M4 X 0.7	2	--
14	5530008	SHCS M4 x 0.7 x 12 BOC	2	--
15	5545009	WASHER, Ø4.3 x Ø9mm x 0.8mm	2	--
16	5550395	FTG TEE -04 COMP x -04 COMP x -04 COMP	3	--
17	5550089	FTG ELB -04 COMP x -06 NPT	2	--
18	5545341	WASHER M10 x Ø20 FLAT	8	--
19	5530738	HHB M10 x 1.5 x 25	8	--
20	5535013	NUT M10 x 1.5 NL	8	--
21	5545343	WASHER, M20 FLAT	4	--
22	5545535	C WASHER SHIM FOR LIFTS	20	--

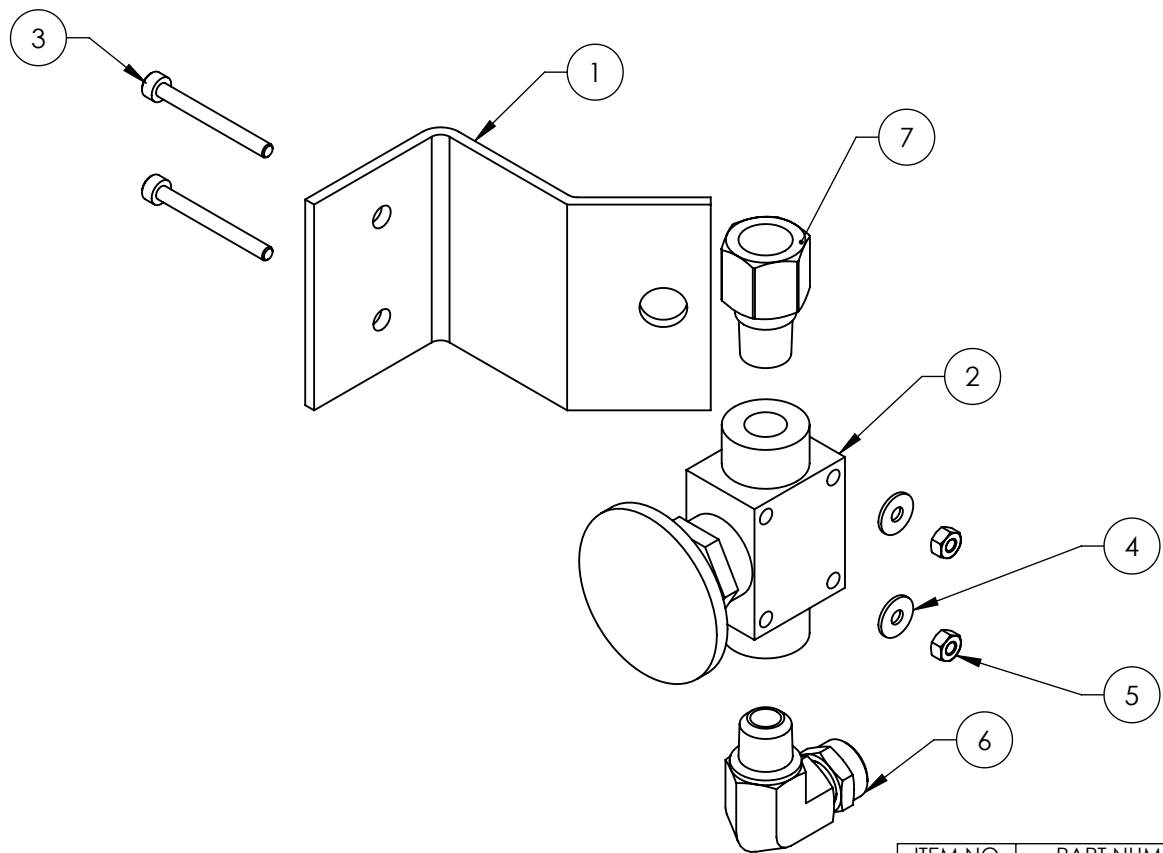
DO NOT SCALE DRAWING		NAME	DATE	1645 LEMONWOOD DR. SANTA PAULA, CA 93060
DRAWN		AC	05/06/2009	
CHECKED		DB	08/01/2016	
DIMENSIONS ARE IN MM		THIRD ANGLE PROJECTION		TITLE: HDS-27/35 SERIES PARTS BAG
				SIZE DWG. NO. A 5174600
				REV E
SCALE: 1:50				SHEET 1 OF 1

**NOTE: UNLESS OTHERWISE SPECIFIED.**  
 1. SEE SHIPPING INSTRUCTIONS FOR FINAL PACKAGING



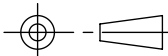
NEXT ASSEMBLY
5250159
5250172
5250175
5250177
5250179
5250364

PROPRIETARY AND CONFIDENTIAL  
 THE INFORMATION CONTAINED IN THIS DRAWING IS THE SOLE PROPERTY OF BENDPAK INC. ANY REPRODUCTION IN PART OR AS A WHOLE WITHOUT THE WRITTEN PERMISSION OF BENDPAK INC. IS PROHIBITED.

REVISION				
REV	DESCRIPTION	DATE	EDITED BY	ECO#
E	REPLACED 5550481 WITH 5550087	10/29/2013	TM	00593
F	REPLACED 5590240 WITH 5590175, UPDATED NEXT ASSEMBLIES	05/05/2015	MR	00683
G	SWITCHED POSITIONS OF 5550087 AND 5550486, UPDATED NEXT ASSEMBLY	06/16/2016	TS	00765



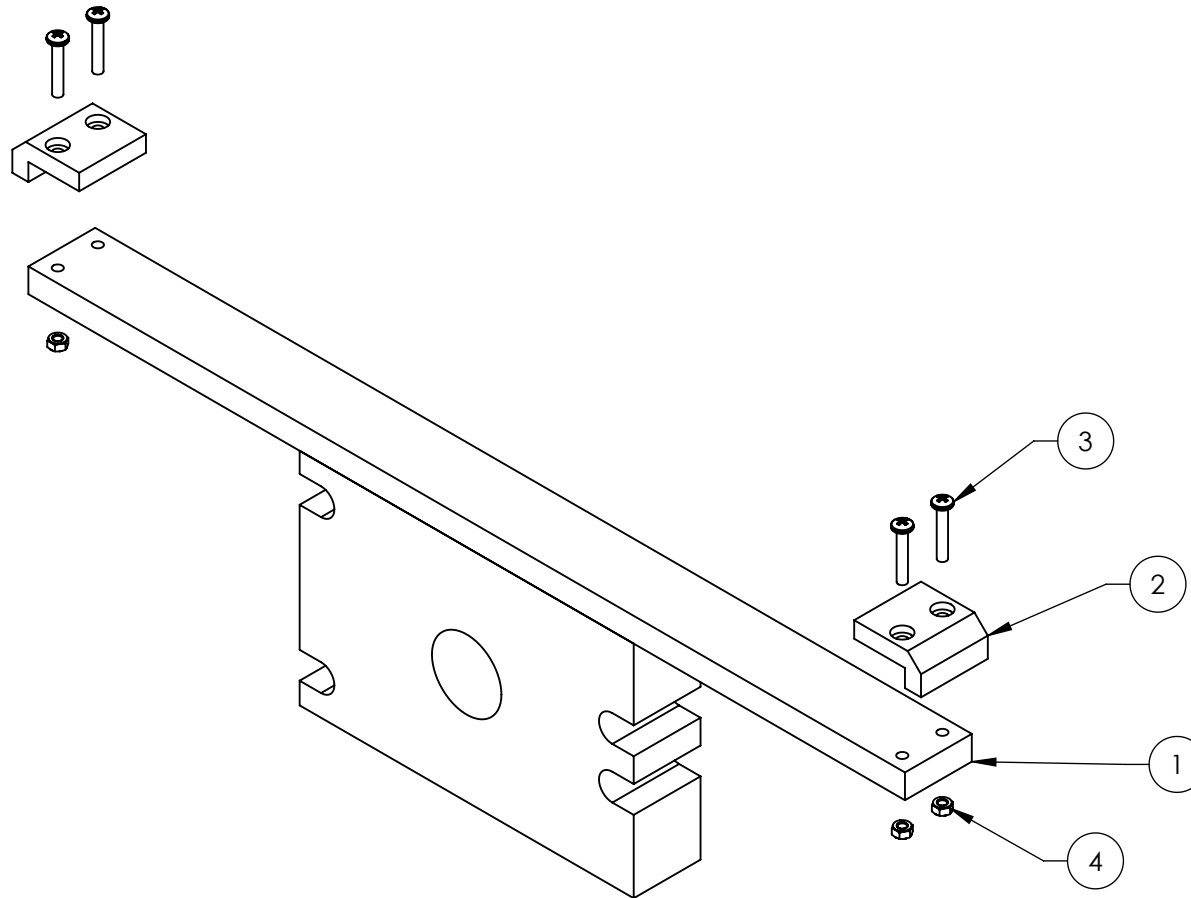
ITEM NO	PART NUMBER	DESCRIPTION	QTY	REV
1	5700031	ZERO ANGLE MTG BRACKET	1	C
2	5590175	PUSH BUTTON AIR VALVE	1	B
3	5530043	SHCS M3 x 0.5 x 30	2	-
4	5545024	WASHER M3 x 9mm	2	-
5	5535020	NUT M3 x 0.5 NL	2	-
6	5550087	FTG ELB -04 COMP x -02 NPT	1	-
7	5550486	FTG NPL -02 NPT x -04 F NPT	1	-

DO NOT SCALE DRAWING		NAME	DATE	<div> <b>BendPak.</b> HOUSING AIRCRAFT SERVICE EQUIPMENT</div> <div>1645 LEMONWOOD DR. SANTA PAULA, CA 93060</div>	
DRAWN		AC	3/14/2008		
CHECKED		CA	09/02/2015		
DIMENSIONS ARE IN MM 		THIRD ANGLE PROJECTION		TITLE:	
				PUSH BUTTON AIR ASSEMBLY	
		<p>PROPRIETARY AND CONFIDENTIAL</p> <p>THE INFORMATION CONTAINED IN THIS DRAWING IS THE SOLE PROPERTY OF <b>BENDPAK INC.</b> ANY REPRODUCTION IN PART OR AS A WHOLE WITHOUT THE WRITTEN PERMISSION OF <b>BENDPAK INC.</b> IS PROHIBITED.</p>		SIZE DWG. NO.	
				REV	
		A		5215096	
				G	
				SCALE: 2:3	
				SHEET 1 OF 1	



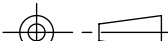
**NOTE: UNLESS OTHERWISE SPECIFIED.**  
1. ASSEMBLE ITEMS AS SHOWN

NEXT ASSEMBLY
HD/HDS/HDSO
SERIES
5250118
5250249
5250364

REVISION				
REV	DESCRIPTION	DATE	EDITED BY	ECO#
C	UPDATED TITLE, UPDATED BOM REVISION	05/17/2010	TM	00358
C-001	UPDATED NEXT ASSEMBLY	08/17/2010	AC	00388
D	UPDATED NEXT ASSEMBLIES AND BOM REVISION	09/24/2015	TM	00724
E	UPDATED BOM REVISION	01/02/2018	TM	00909



ITEM NO	PART NUMBER	DESCRIPTION	QTY	REV
1	5620186	HD-35 SERIES CYLINDER FLANGE ARM WELDMENT	1	D
2	5716153	HDS-18/27/35 SERIES ALIGNMENT BLOCK	2	D
3	5530701	BHPS M6 x 1 x 35mmL	4	-
4	5535357	NUT M6 x 1.0 NL	4	-

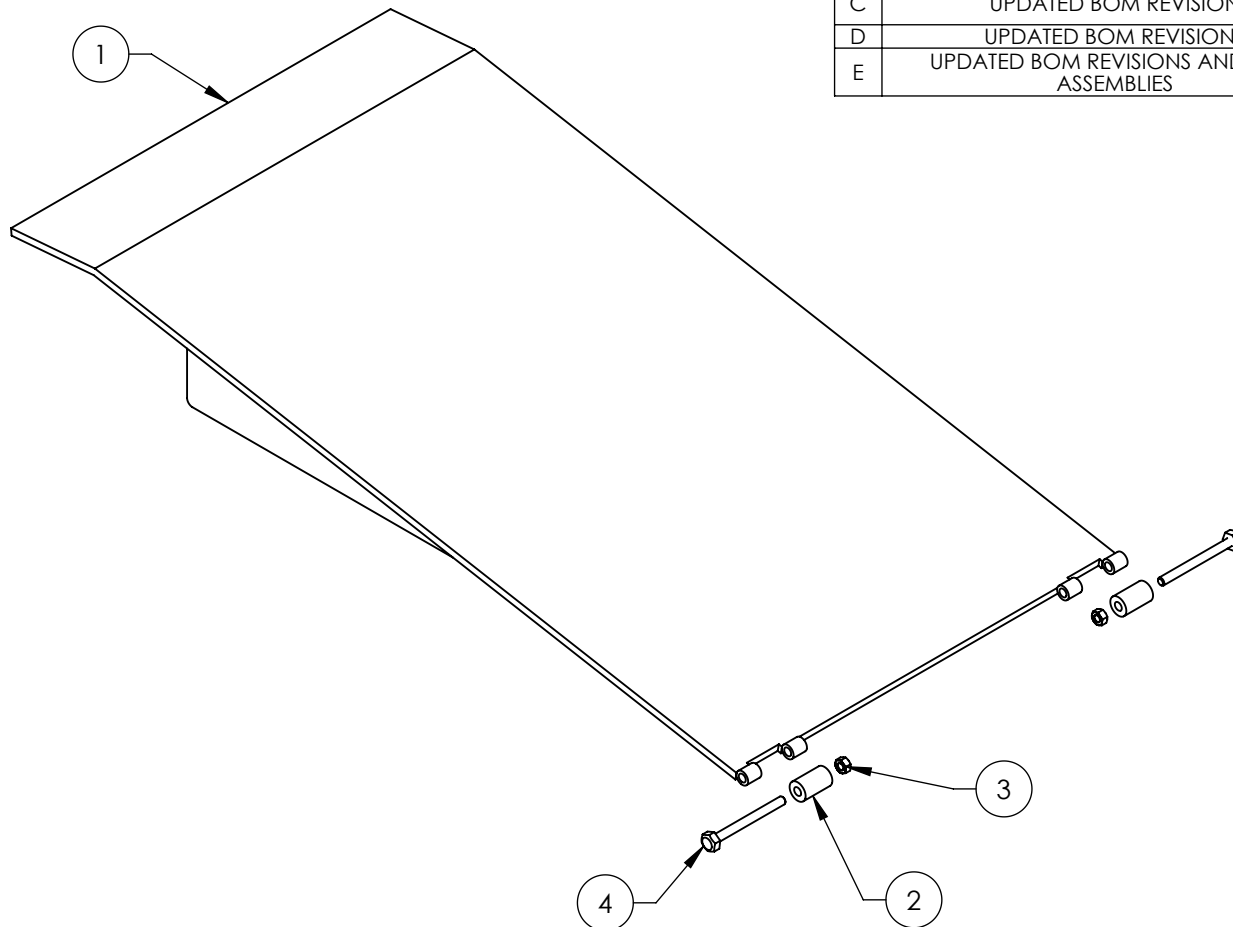
DO NOT SCALE DRAWING		NAME	DATE	 1645 LEMONWOOD DR. SANTA PAULA, CA 93060			
DIMENSIONS ARE IN MM  		DRAWN	GJZ	10/14/2008	TITLE: HDS-35 SERIES CYLINDER FLANGE ARM ASSEMBLY		
		CHECKED	AW	1/17/2018			
		THIRD ANGLE PROJECTION 					
		PROPRIETARY AND CONFIDENTIAL THE INFORMATION CONTAINED IN THIS DRAWING IS THE SOLE PROPERTY OF BENDPAK INC. ANY REPRODUCTION IN PART OR AS A WHOLE WITHOUT THE WRITTEN PERMISSION OF BENDPAK INC. IS PROHIBITED.			SIZE DWG. NO.	REV	
					A	5215152	E
					SCALE: 1:4		SHEET 1 OF 1

**NOTE: UNLESS OTHERWISE SPECIFIED.**



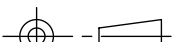
1. SEE SHIPPING INSTRUCTIONS FOR FINAL PACKAGING
2. ASSEMBLE ITEMS AS SHOWN

NEXT ASSEMBLY
5215149
5215240
5215385

REVISION				
REV	DESCRIPTION	DATE	EDITED BY	ECO#
C	UPDATED BOM REVISION	09/09/2014	TM	00666 PREA
D	UPDATED BOM REVISIONS	10/05/2015	TM	00724
E	UPDATED BOM REVISIONS AND NEXT ASSEMBLIES	03/05/2018	TM	00927



ITEM NO	PART NUMBER	DESCRIPTION	QTY	REV
1	5600266	HDS-35 SERIES EXTENDED DRIVE UP RAMP WELDMENT	1	E
2	5575663	HDS-18/27/35 DRIVE UP RAMP WHEEL	2	C
3	5535012	NUT M12x1.75 NL	2	-
4	5530035	HHB M12 x 1.75 x 130	2	-

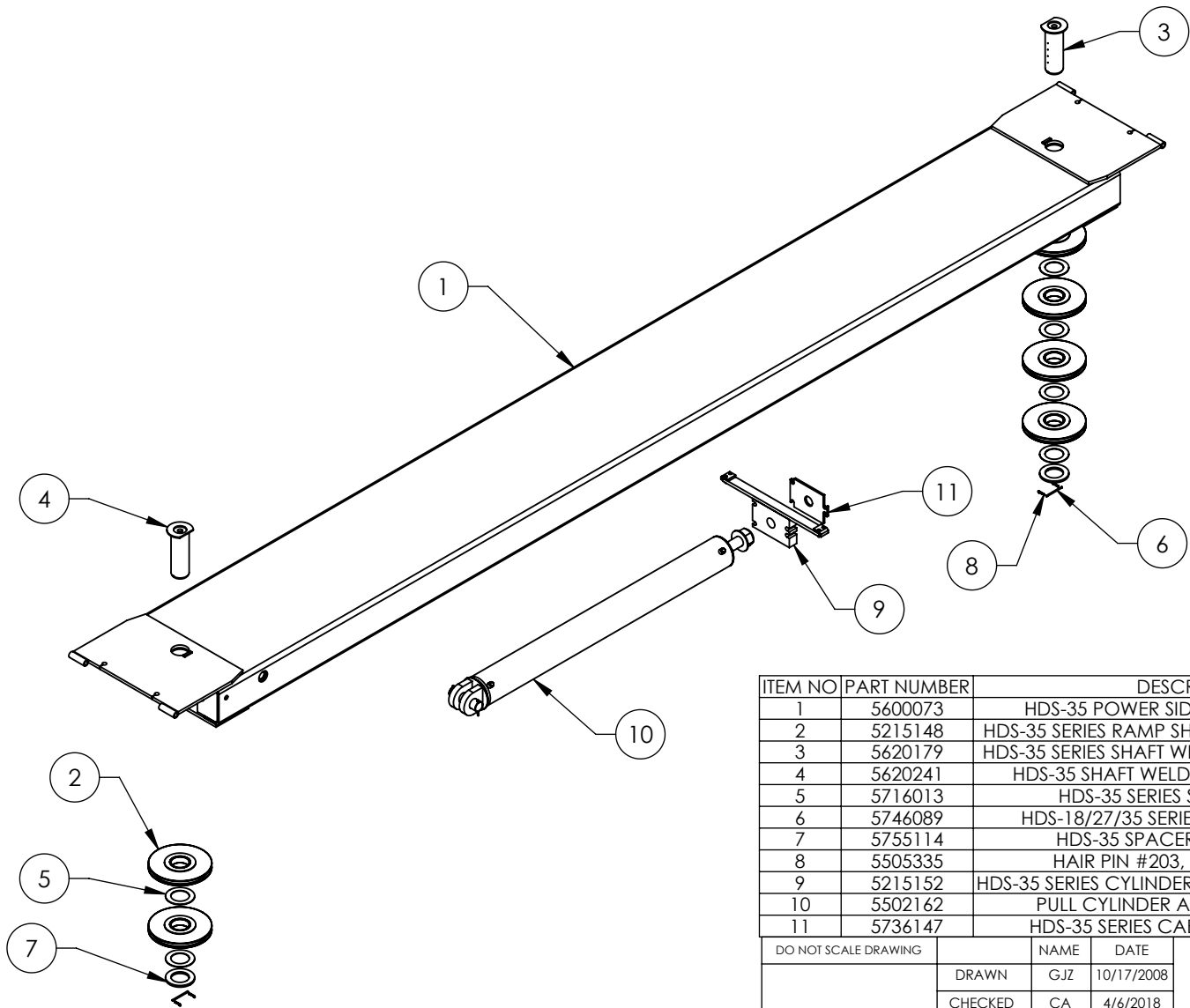
DO NOT SCALE DRAWING		NAME	DATE		
<div>DIMENSIONS ARE IN MM</div> 		DRAWN	AC	05/06/2009	
		CHECKED	CA	4/6/2018	
		THIRD ANGLE PROJECTION			
<div>PROPRIETARY AND CONFIDENTIAL</div> <div>THE INFORMATION CONTAINED IN THIS DRAWING IS THE SOLE PROPERTY OF BENDPAK INC. ANY REPRODUCTION IN PART OR AS A WHOLE WITHOUT THE WRITTEN PERMISSION OF BENDPAK INC. IS PROHIBITED.</div>		TITLE:		HDS-35 SERIES EXTENDED DRIVE UP RAMP ASSEMBLY	
		SIZE	DWG. NO.	REV	
		A	5215162	E	
SCALE: 1:10				SHEET 1 OF 1	

**NOTE: UNLESS OTHERWISE SPECIFIED.**

1. SEE SHIPPING INSTRUCTIONS FOR FINAL PACKAGING
2. ASSEMBLE ITEMS AS SHOWN

NEXT ASSEMBLY
5245015
5245019
5245034
5245037

REVISION				
REV	DESCRIPTION	DATE	EDITED BY	ECO#
R	UPDATED BOM REVISIONS	05/11/2017	TS	00829
T	UPDATED BOM REVISIONS	01/02/2018	TM	00909
U	UPDATED BOM REVISION	03/15/2018	TM	00927



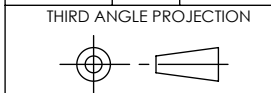
ITEM NO	PART NUMBER	DESCRIPTION	QTY	REV
1	5600073	HDS-35 POWER SIDE RAMP WELDMENT	1	J
2	5215148	HDS-35 SERIES RAMP SHEAVE ROLLER ASSEMBLY	6	C
3	5620179	HDS-35 SERIES SHAFT WELDMENT, 4 SHEAVE END	1	A
4	5620241	HDS-35 SHAFT WELDMENT, 2 SHEAVE END	1	A
5	5716013	HDS-35 SERIES SHEAVE SPACER	6	A
6	5746089	HDS-18/27/35 SERIES SHEAVE SHAFT PIN	2	C
7	5755114	HDS-35 SPACER, RAMP SHEAVE	2	A
8	5505335	HAIR PIN #203, Ø0.093" X 1 5/8"	4	-
9	5215152	HDS-35 SERIES CYLINDER FLANGE ARM ASSEMBLY	1	E
10	5502162	PULL CYLINDER ASSEMBLY Ø5.5 x 60	1	G
11	5736147	HDS-35 SERIES CABLE RETAINER PLATE	1	B

DO NOT SCALE DRAWING

DIMENSIONS ARE IN MM



NAME	DATE
DRAWN GJZ	10/17/2008
CHECKED CA	4/6/2018



PROPRIETARY AND CONFIDENTIAL  
THE INFORMATION CONTAINED IN THIS DRAWING IS  
THE SOLE PROPERTY OF BENDPAK INC. ANY  
REPRODUCTION IN PART OR AS A WHOLE WITHOUT  
THE WRITTEN PERMISSION OF BENDPAK INC. IS  
PROHIBITED.

**BendPak.**

1645 LEMONWOOD DR.  
SANTA PAULA, CA 93060

TITLE: HDS-35 POWER SIDE  
RAMP ASSEMBLY

SIZE	DWG. NO.	REV
A	5215240	U

SCALE: 1:32

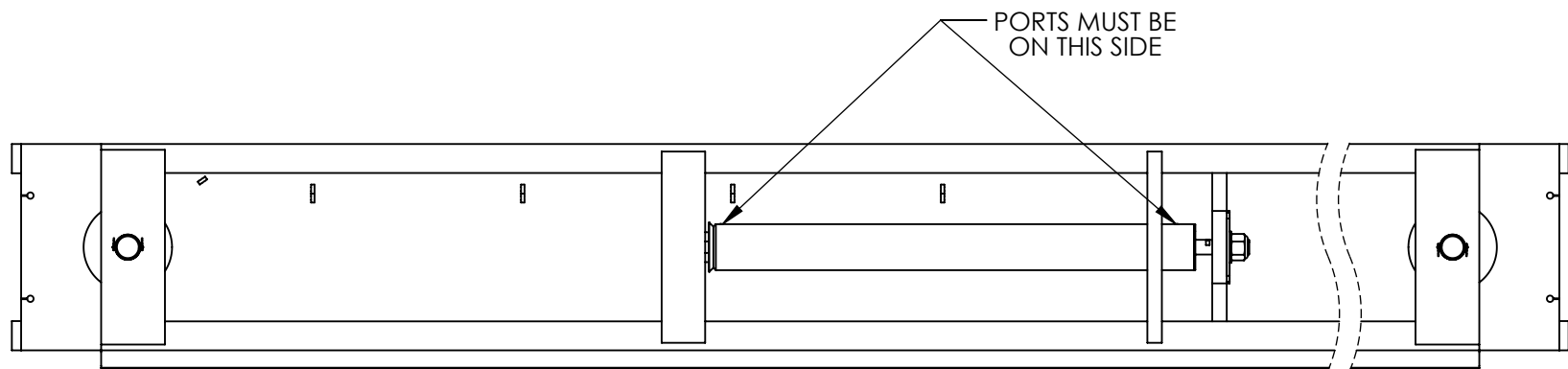
SHEET 1 OF 2

**NOTE: UNLESS OTHERWISE SPECIFIED.**

1. VERIFY CYLINDER PORTS ARE CAPPED OFF WITH 3/8" NPT STEEL PLUG
2. SEE SHIPPING INSTRUCTIONS FOR FINAL PACKAGING
3. ASSEMBLE ITEMS AS SHOWN

NEXT ASSEMBLY  
5245015





**BP BendPak.**

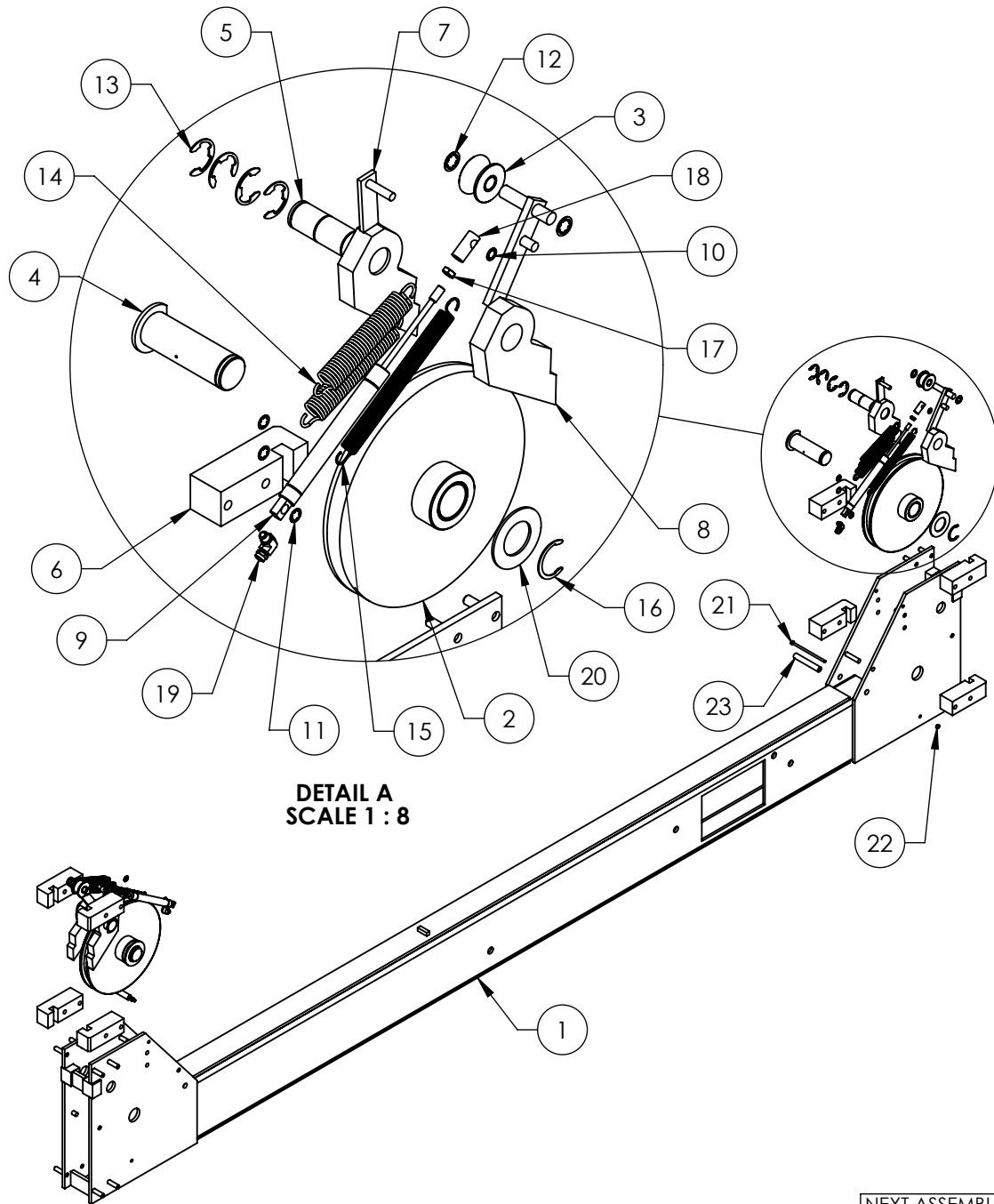
1645 LEMONWOOD DR.  
SANTA PAULA, CA 93060

TITLE: HDS-35 POWER SIDE  
RAMP ASSEMBLY

SIZE	DWG. NO.	REV
<b>A</b>	5215240	U

SCALE: 1:25

SHEET 2 OF 2



**DETAIL A**  
**SCALE 1 : 8**

**NOTE: UNLESS OTHERWISE SPECIFIED.**

1. SEE SHIPPING INSTRUCTIONS FOR FINAL PACKAGING
2. ASSEMBLE ITEMS AS SHOWN

NEXT ASSEMBLY
5210153
5245015
5245019
5245034
5245037

REVISION				
REV	DESCRIPTION	DATE	EDITED BY	ECO#
G	UPDATED BOM REVISIONS	05/11/2017	TS	00829
H	UPDATED BOM REVISION	01/02/2018	TM	00909
J	UPDATED BOM REVISION	03/12/2018	TM	00927

ITEM NO	PART NUMBER	DESCRIPTION	QTY	REV
1	5600279	HDS-18/27 SERIES LARGE WINDOW CROSSTUBE WELDMENT	1	N
2	5215139	HDS-35 SERIES CROSSTUBE SHEAVE ASSEMBLY	2	B
3	5215143	HD/HDS-35 SERIES SAFETY ROLLER ASSEMBLY	2	C
4	5505124	HDS-18/27/35 SERIES CROSS TUBE SHEAVE SHAFT	2	E
5	5505125	HDS-18/27/35 SAFETY PIN	2	D
6	5716152	HDS-18/27/35 SERIES PLASTIC SLIDE BLOCK	8	E
7	5210359	HDS-18/27/35 SERIES SAFETY WELDMENT #1	2	C
8	5210358	HDS-18/27/35 SERIES SAFETY WELDMENT #2	2	D
9	5502335	AIR CYLINDER, Ø.75 x 4.0" STROKE	2	-
10	5505030	ROTOR CLIP 10mm SS	3	-
11	5505031	ROTOR CLIP 12mm SS	6	-
12	5505033	ROTOR CLIP 16mm SS	4	-
13	5540002	E RING Ø1.375" OD TRUARC X5133-137	8	-
14	5540060	SPRING Ø29 x 178mm, SLACK SAFETY	4	A
15	5540055	SPRING Ø19 x 241mm, AIR CYLINDER	2	A
16	5540112	SNAP RING; TRUARC 5103-175	2	-
17	5535101	3/8-16 HEX NUT JAM	2	-
18	5550376	HDS-18/27/35 SERIES ADAPTER, 1" AIR CYLINDER	2	C
19	5550087	FTG ELB -04 COMP x -02 NPT	2	-
20	5545108	WASHER M45 x 80 FLAT	2	-
21	5530317	HHB M6 x 1 x 136	2	-
22	5535357	NUT M6 x 1.0 NL	2	-
23	5755158	HD-18/27/35 SERIES CROSSTUBE SPACER Ø16 x Ø10 x 102	2	A

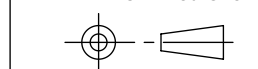
DO NOT SCALE DRAWING

DIMENSIONS ARE IN MM



NAME	DATE
DRAWN SH	04/16/2013
CHECKED CA	4/6/2018

THIRD ANGLE PROJECTION



PROPRIETARY AND CONFIDENTIAL  
THE INFORMATION CONTAINED IN THIS DRAWING IS THE SOLE PROPERTY OF BENDPAK INC. ANY REPRODUCTION IN PART OR AS A WHOLE WITHOUT THE WRITTEN PERMISSION OF BENDPAK INC. IS PROHIBITED.

**BendPak.**

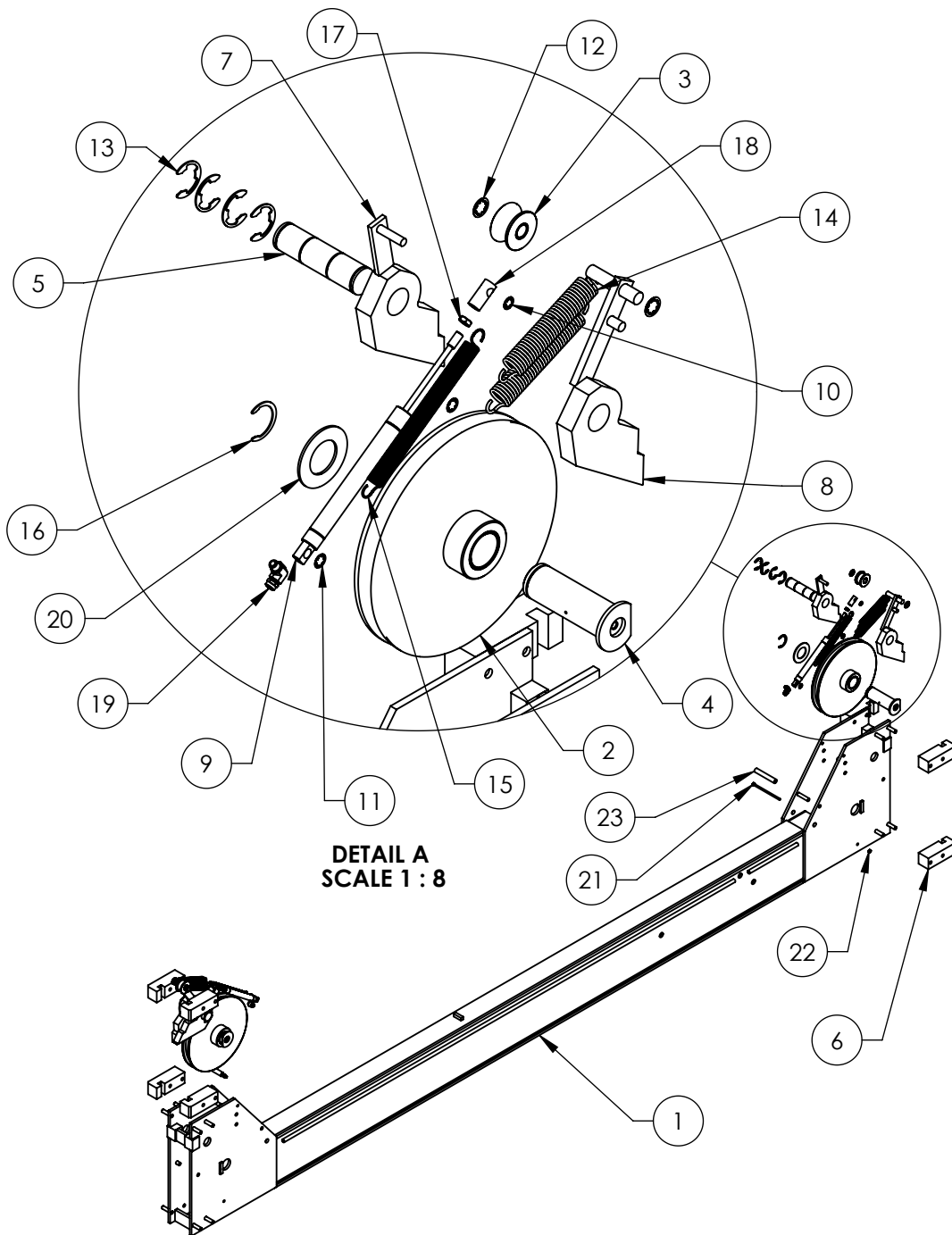
1645 LEMONWOOD DR.  
SANTA PAULA, CA 93060

TITLE: HDS-35 SERIES LARGE WINDOW CROSSTUBE ASSEMBLY

SIZE DWG. NO. REV  
**A** 5215598 J

SCALE: 1:20

SHEET 1 OF 1



**NOTE: UNLESS OTHERWISE SPECIFIED.**

1. SEE SHIPPING INSTRUCTIONS FOR FINAL PACKAGING
2. ASSEMBLE ITEMS AS SHOWN

NEXT ASSEMBLY
5245015
5245019
5245037

REVISION				
REV	DESCRIPTION	DATE	EDITED BY	ECO#
G	UPDATED BOM REVISIONS	05/11/2017	TS	00829
H	UPDATED BOM REVISION	10/02/2018	TM	00909
J	UPDATED BOM REVISION	03/12/2018	TM	00927

ITEM NO	PART NUMBER	DESCRIPTION	QTY	REV
1	5600293	HDS-18/27 SERIES SMALL WINDOW CROSSTUBE WELDMENT	1	N
2	5215139	HDS-35 SERIES CROSSTUBE SHEAVE ASSEMBLY	2	B
3	5215143	HD/HDS-35 SERIES SAFETY ROLLER ASSEMBLY	2	C
4	5505124	HDS-18/27/35 SERIES CROSS TUBE SHEAVE SHAFT	2	E
5	5505125	HDS-18/27/35 SAFETY PIN	2	D
6	5716152	HDS-18/27/35 SERIES PLASTIC SLIDE BLOCK	8	E
7	5210359	HDS-18/27/35 SERIES SAFETY WELDMENT #1	2	C
8	5210358	HDS-18/27/35 SERIES SAFETY WELDMENT #2	2	D
9	5502335	AIR CYLINDER, Ø.75 x 4.0" STROKE	2	-
10	5505030	ROTOR CLIP 10mm SS	2	-
11	5505031	ROTOR CLIP 12mm SS	4	-
12	5505033	ROTOR CLIP 16mm SS	4	-
13	5540002	E RING Ø1.375" OD TRUARC X5133-137	8	-
14	5540060	SPRING Ø29 x 178mm, SLACK SAFETY	4	A
15	5540055	SPRING Ø19 x 241mm, AIR CYLINDER	2	A
16	5540112	SNAP RING; TRUARC 5103-175	2	-
17	5535101	3/8-16 HEX NUT JAM	2	-
18	5550376	HDS-18/27/35 SERIES ADAPTER, 1" AIR CYLINDER	2	-
19	5550087	FTG ELB -04 COMP x -02 NPT	2	-
20	5545108	WASHER M45 x 80 FLAT	2	-
21	5530317	HHB M6 x 1 x 136	2	-
22	5535357	NUT M6 x 1.0 NL	2	-
23	5755158	HD-18/27/35 SERIES CROSSTUBE SPACER Ø16 x Ø10 x 102	2	A

DO NOT SCALE DRAWING

DIMENSIONS ARE IN MM



NAME	DATE
DRAWN TM	04/29/2013
CHECKED CA	4/6/2018

THIRD ANGLE PROJECTION

PROPRIETARY AND CONFIDENTIAL  
THE INFORMATION CONTAINED IN THIS DRAWING IS THE SOLE PROPERTY OF BENDPAK INC. ANY REPRODUCTION IN PART OR AS A WHOLE WITHOUT THE WRITTEN PERMISSION OF BENDPAK INC. IS PROHIBITED.

**BendPak.**

1645 LEMONWOOD DR.  
SANTA PAULA, CA 93060

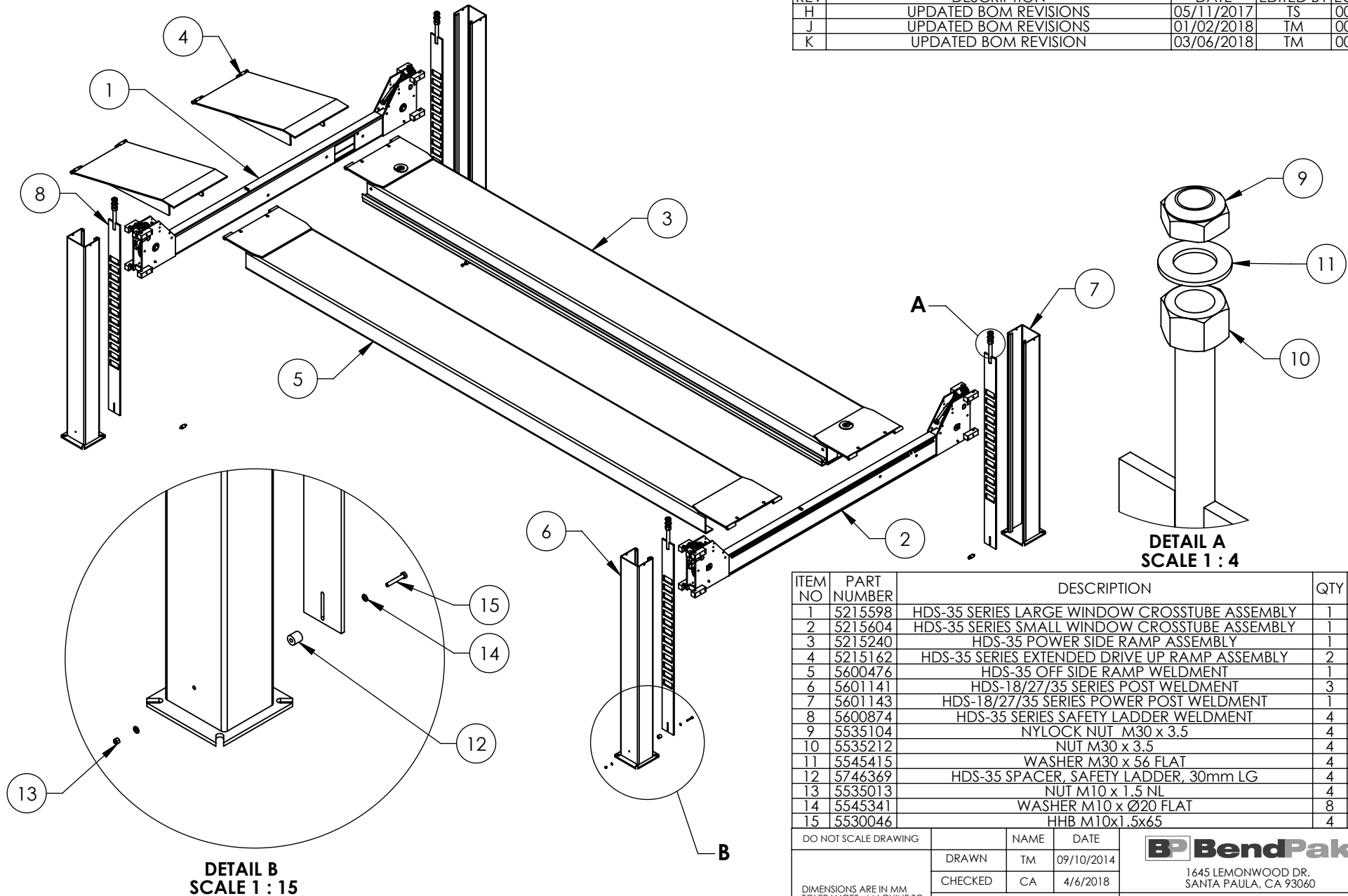
TITLE: HDS-35 SERIES SMALL WINDOW CROSSTUBE ASSEMBLY

SIZE DWG. NO. 5215604 REV J

SCALE: 1:25

SHEET 1 OF 1

REVISION				
REV	DESCRIPTION	DATE	EDITED BY	ECO#
H	UPDATED BOM REVISIONS	05/11/2017	TS	00829
J	UPDATED BOM REVISIONS	01/02/2018	TM	00909
K	UPDATED BOM REVISION	03/06/2018	TM	00927



**DETAIL B  
SCALE 1 : 15**

**DETAIL A  
SCALE 1 : 4**

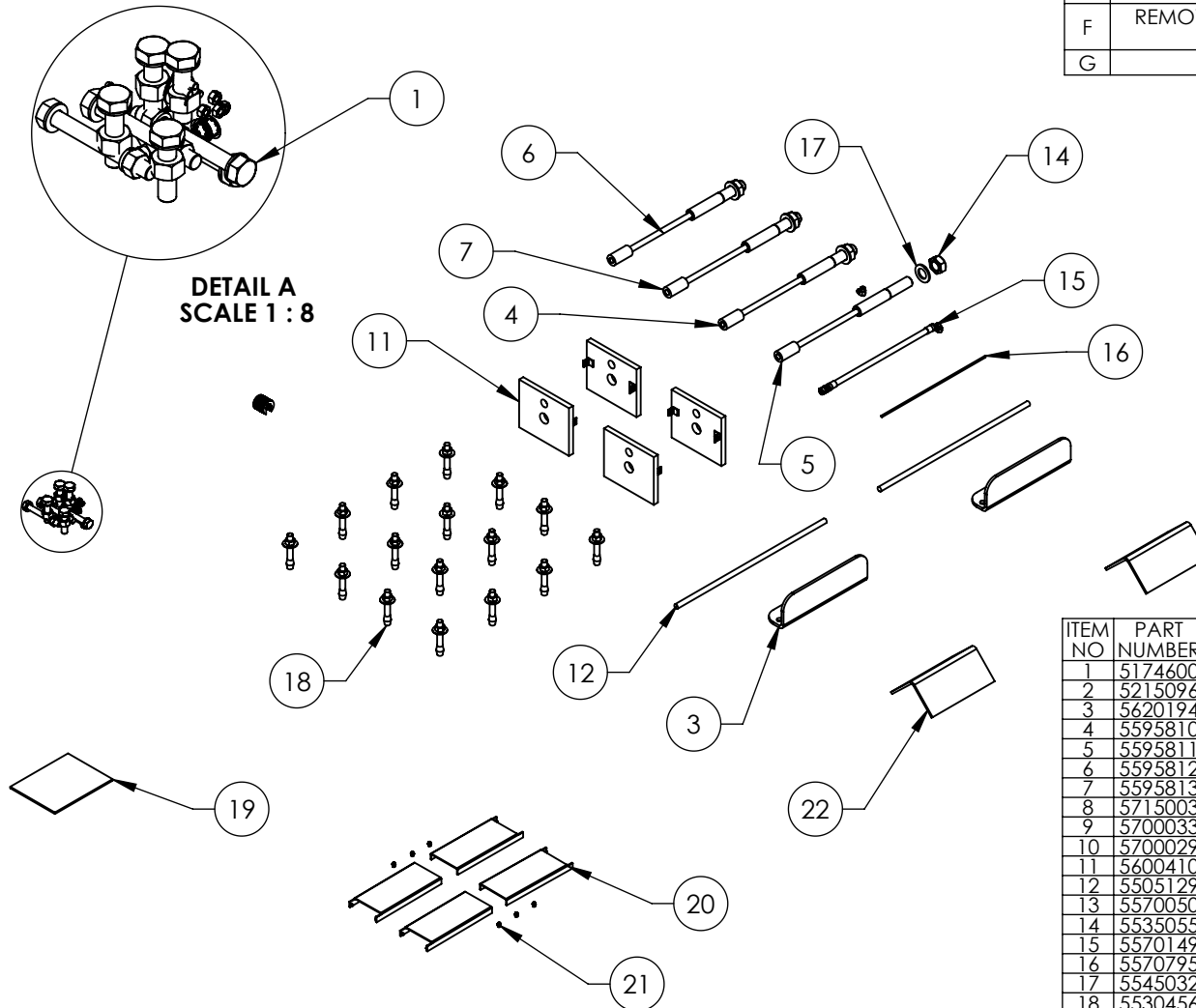
**NOTE: UNLESS OTHERWISE SPECIFIED.**

1. SEE SHIPPING INSTRUCTIONS FOR FINAL PACKAGING
2. FASTEN NUTS AND WASHERS TO SAFETY LADDERS IN ORDER SHOWN FOR SHIPMENT

ITEM NO	PART NUMBER	DESCRIPTION	QTY	REV
1	5215598	HDS-35 SERIES LARGE WINDOW CROSSTUBE ASSEMBLY	1	J
2	5215604	HDS-35 SERIES SMALL WINDOW CROSSTUBE ASSEMBLY	1	J
3	5215240	HDS-35 POWER SIDE RAMP ASSEMBLY	1	U
4	5215162	HDS-35 SERIES EXTENDED DRIVE UP RAMP ASSEMBLY	2	E
5	5600476	HDS-35 OFF SIDE RAMP WELDMENT	1	D
6	5601141	HDS-18/27/35 SERIES POST WELDMENT	3	A
7	5601143	HDS-18/27/35 SERIES POWER POST WELDMENT	1	A
8	5600874	HDS-35 SERIES SAFETY LADDER WELDMENT	4	B
9	5535104	NYLOCK NUT M30 x 3.5	4	-
10	5535212	NUT M30 x 3.5	4	-
11	5545415	WASHER M30 x 56 FLAT	4	-
12	5746369	HDS-35 SPACER, SAFETY LADDER, 30mm LG	4	A
13	5535013	NUT M10 x 1.5 NL	4	-
14	5545341	WASHER M10 x Ø20 FLAT	8	-
15	5530046	HHB M10x1.5x65	4	-

DO NOT SCALE DRAWING		NAME	DATE	<b>BendPak.</b> 1645 LEMONWOOD DR. SANTA PAULA, CA 93060	
DRAWN		TM	09/10/2014		
CHECKED		CA	4/6/2018		
DIMENSIONS ARE IN MM TOLERANCES: MACHINE TO 0 = ±1.5 0.0 = ±0.5 0.00 = ±0.13 ANGULAR: MACHINE TO 0 = ±1/2° SURFACE FINISH 1.6 Ra µm FOR MACHINED SURFACES UNLESS OTHERWISE SPECIFIED		THIRD ANGLE PROJECTION 		TITLE: <b>HDS-35 LIFT SUPERSTRUCTURE</b>	
PROPRIETARY AND CONFIDENTIAL THE INFORMATION CONTAINED IN THIS DRAWING IS THE SOLE PROPERTY OF BENDPAK INC. ANY REPRODUCTION IN PART OR AS A WHOLE WITHOUT THE WRITTEN PERMISSION OF BENDPAK INC. IS PROHIBITED.		SIZE	DWG. NO.	REV	
NEXT ASSEMBLY 5260071		A	5245015	K	
SCALE: 1:50				SHEET 1 OF 1	

REVISION				
REV	DESCRIPTION	DATE	EDITED BY	ECO#
E	ADDED 5550026 AND 5716633, REMOVED 5900151, UPDATED BOM REVISIONS	09/21/2015	TM	00724
F	REMOVED 5905151, 5900152, AND 5900147, UPDATED BOM REVISIONS	01/03/2018	TS	00909
G	ADDED 5700246	03/19/2018	TM	00927



ITEM NO	PART NUMBER	DESCRIPTION	QTY.	REV
1	5174600	HDS-27/35 SERIES PARTS BAG	1	E
2	5215096	PUSH BUTTON AIR ASSEMBLY	1	G
3	5620194	HDS-27/35 TIRE STOP WELDMENT	2	B
4	5595810	HDS-35 SERIES CABLE ASSY Ø19 x 4102mm ST	1	F
5	5595811	HDS-35 SERIES CABLE ASSY Ø19 x 5836mm ST	1	F
6	5595812	HDS-35 CABLE ASSY Ø19 x 10452mm ST	1	F
7	5595813	HDS-35 CABLE ASSY Ø19 x 12167mm ST	1	F
8	5715003	POWER UNIT VIBRATION DAMPENER	1	B
9	5700033	HD-SERIES FLEX TUBE ANGLE	1	E
10	5700029	HD-SERIES FLEX TUBE BRACKET PLATE	1	F
11	5600410	HDS-35 SERIES TOP PLATE WELDMENT	4	B
12	5505129	HD/HDS-35 SERIES HINGE PIN	2	A
13	5570050	FLEX TUBE ASSEMBLY 1320mm	1	B
14	5535055	NYLOCK NUT M36 x 4	4	-
15	5570149	HDS-35 HYDRAULIC HOSE ASSY Ø10 x 5385mm	1	B
16	5570795	1/4" POLY-FLO TUBING	24000mm*	-
17	5545032	WASHER M36 x 66 FLAT	4	-
18	5530456	AB 3/4" x 4 - 3/4"	16	-
19	5900160	HDS TRUCK SERIES INSTALLATION MANUAL	1	-
20	5716633	CROSSTUBE COVER, PLASTIC; HDS-27/35 SERIES	4	B
21	5550026	FTG GRS 1/8NPT	6	-
22	5700246	WHEEL CHOCK	2	A

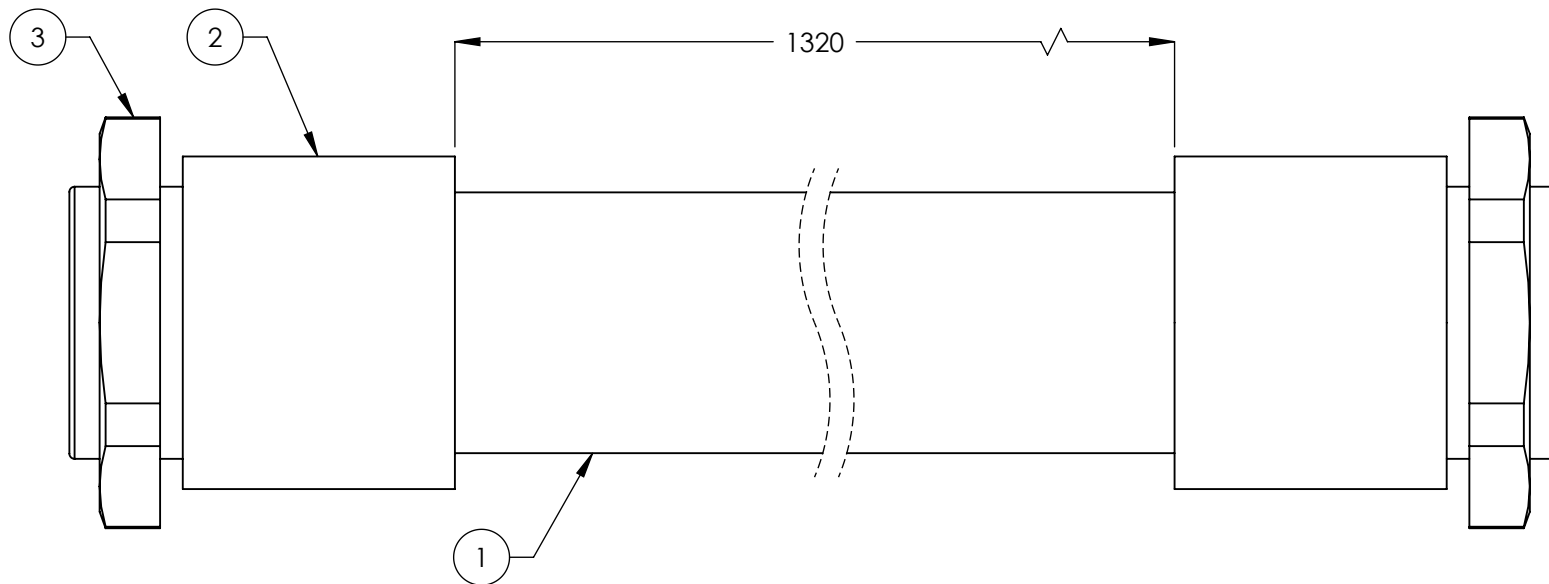
# **NOTE: UNLESS OTHERWISE SPECIFIED.**

- SEE SHIPPING INSTRUCTIONS FOR FINAL PACKAGING
- INSERT PARTS BAG INTO PARTS BOX BEFORE SHIPMENT
- THREAD 5535055 WITH 5545032 ONTO CALBELS FOR SHIPMENT
- HOSES AND CABLES IN REPRESENTATIONAL FORM
- (\*) LENGTH FOR REFERENCE ONLY


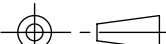
NEXT ASSEMBLY  
5260071

DO NOT SCALE DRAWING		NAME	DATE	<p>1645 LEMONWOOD DR. SANTA PAULA, CA 93060</p>
DRAWN		TM	05/08/2013	
CHECKED		CA	4/6/2018	
DIMENSIONS ARE IN MM		THIRD ANGLE PROJECTION		TITLE:
		<small>PROPRIETARY AND CONFIDENTIAL THE INFORMATION CONTAINED IN THIS DRAWING IS THE SOLE PROPERTY OF BENDPAK INC. ANY REPRODUCTION IN PART OR AS A WHOLE WITHOUT THE WRITTEN PERMISSION OF BENDPAK INC. IS PROHIBITED.</small>		SIZE DWG. NO.
			<b>A</b> 5250177	
				REV
SCALE: 1:25				G
SHEET 1 OF 1				

REVISION		DATE	EDITED BY	ECO#
REV.	DESCRIPTION			
A	PRODUCTION RELEASE	12/24/2007	AC	00104
A-001	CHANGED SURFACE FINISH FROM 3.2 $\mu\text{m}$ TO 1.6 $\text{Ra } \mu\text{m}$	09/05/2008	GJ	00237
A-002	UPDATED NEXT ASSEMBLY	10/02/2008	AC	00140
B	UPDATE TUBE TO NEW STYLE, UPDATED NEXT ASSEMBLY AND TITLE	12/11/2008	AC	00256
B-001	UPDATED NEXT ASSEMBLY	05/04/2009	AC	00277
B-013	UPDATED NEXT ASSEMBLIES	05/17/2013	TM	00593



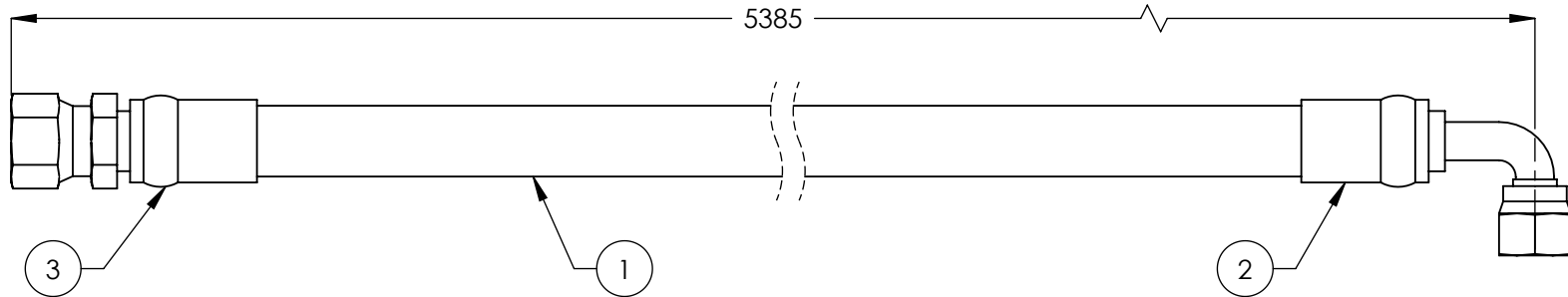
ITEM NO	PART NUMBER	DESCRIPTION	QTY.	REV
1	5570053	PE FLEX TUBE $\varnothing 34.5 \times \varnothing 29$	1386mm*	-
2	5555555	WQG1-M36/AD34.5 CONNECTOR	2	-
3	5535050	PLASTIC NUT M36 x 2	2	-

DO NOT SCALE DRAWING		NAME		DATE		 <b>BendPak.</b> <small>POWERING AUTOMOTIVE SERVICE SOLUTIONS</small>		1645 LEMONWOOD DR. SANTA PAULA, CA 93060			
DIMENSIONS ARE IN MM TOLERANCES:  0. = ±1.5 0.0 = ±1.0 0.00 = ±0.25 0.000 = ±0.13  ANGULAR: MACH ±2°  SURFACE FINISH 1.6 ISO Ra μm FOR MACHINED SURFACES UNLESS OTHERWISE SPECIFIED  MATERIAL:		DRAWN		AC		12/24/2007					
		CHECKED									
		THIRD ANGLE PROJECTION									
SIZE:		<p><b>PROPRIETARY AND CONFIDENTIAL</b></p> <p>THE INFORMATION CONTAINED IN THIS DRAWING IS THE SOLE PROPERTY OF <b>BENDPAK INC.</b> ANY REPRODUCTION IN PART OR AS A WHOLE WITHOUT THE WRITTEN PERMISSION OF <b>BENDPAK INC.</b> IS PROHIBITED.</p>						TITLE:		FLEX TUBE ASSEMBLY 1320mm	
								SIZE DWG. NO.		REV	
								A		5570050	
		SCALE: 1:1						SHEET 1 OF 1			


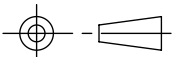
**NOTE: UNLESS OTHERWISE SPECIFIED.**

- FOR ITEM 1 SPECIFICATIONS REFER TO PART SPECIFICATION FORM
- (\*)ITEM 1 QTY FOR REFERENCE ONLY

REVISION				
REV	DESCRIPTION	DATE	EDITED BY	ECO#
A	PRODUCTION RELEASE, DERIVED FROM 5570901	08/10/2009	TM	00249
A-001	UPDATED NEXT ASSEMBLIES	05/21/2013	TM	00593
B	UPDATED TITLE TO REFLECT WHERE USED, UPDATED NEXT ASSEMBY	09/24/2015	TM	00724



ITEM NO	PART NUMBER	DESCRIPTION	QTY.	REV
1	5570116	Ø10 ID HYDRAULIC HOSE	5347*mm	-
2	5550337	FTG ELB -06 CRIMP x -06 JIC	1	-
3	5550336	FTG NPL -06 CRIMP x -06 JIC	1	-

DO NOT SCALE DRAWING		NAME	DATE	<div> <b>BendPak.</b> <small>HOISTING AUTOMOTIVE SERVICE EQUIPMENT</small></div> <div>1645 LEMONWOOD DR. SANTA PAULA, CA 93060</div>		
DIMENSIONS ARE IN MM TOLERANCES: <div>0. = ±1.5 0.0 = ±1.0 0.00 = ±0.25 0.000 = ±0.13</div> ANGULAR: MACH±2° SURFACE FINISH 1.6 ISO Ra µm FOR MACHINED SURFACES UNLESS OTHERWISE SPECIFIED		DRAWN	AC			08/27/2008
		CHECKED	CA			02/02/2016
		THIRD ANGLE PROJECTION		TITLE: HDS-35 HYDRAULIC HOSE ASSY Ø10 x 5385mm		
						
		PROPRIETARY AND CONFIDENTIAL THE INFORMATION CONTAINED IN THIS DRAWING IS THE SOLE PROPERTY OF <b>BENDPAK INC.</b> ANY REPRODUCTION IN PART OR AS A WHOLE WITHOUT THE WRITTEN PERMISSION OF <b>BENDPAK INC.</b> IS PROHIBITED.		SIZE	DWG. NO.	REV
Y			A	5570149	B	
				SCALE: 1:2	SHEET 1 OF 1	

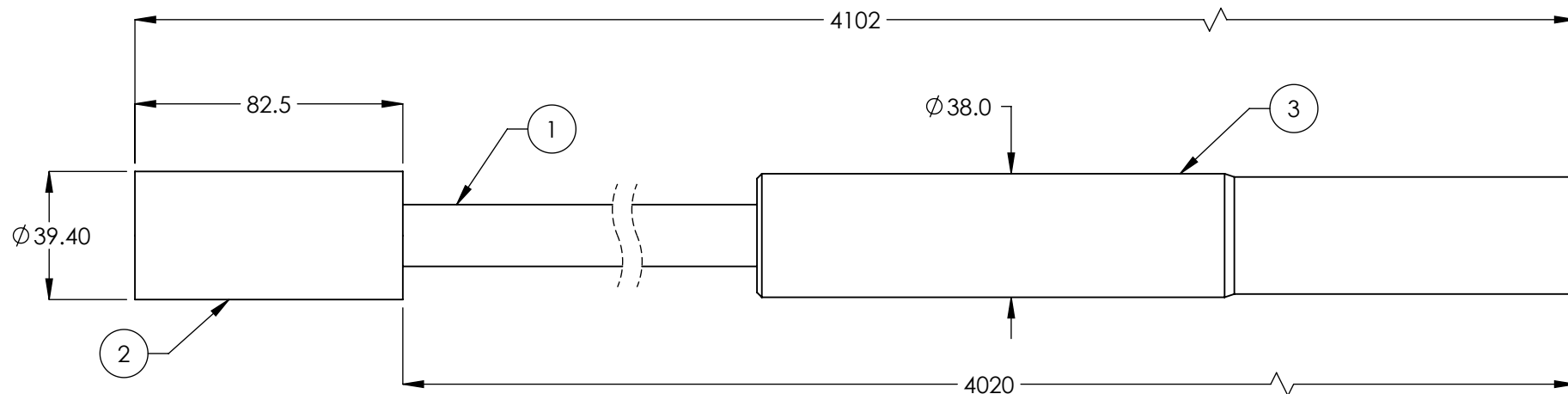
**NOTE: UNLESS OTHERWISE SPECIFIED.**

- FOR ITEM 1 SPECIFICATIONS REFER TO PART SPECIFICATION FORM
- (\*)ITEM 1 QTY FOR REFERENCE ONLY

NEXT ASSEMBLY  
5250177

PROPRIETARY AND CONFIDENTIAL  
THE INFORMATION CONTAINED IN THIS DRAWING IS  
THE SOLE PROPERTY OF BENDPAK INC. ANY  
REPRODUCTION IN PART OR AS A WHOLE WITHOUT  
THE WRITTEN PERMISSION OF BENDPAK INC. IS  
PROHIBITED.



REVISION				
REV	DESCRIPTION	DATE	EDITED BY	ECO#
D	4102 WAS 4160, 4020 WAS 4077, UPDATED TITLE	04/19/2011	MT	00455
D-001	UPDATED NEXT ASSEMBLIES	05/21/2013	TM	00593
E	UPDATED TITLE TO REFLECT WHERE USED, UPDATED NEXT ASSEMBLIES	09/24/2015	TM	00724
F	UPDATED BOM REVISION	01/03/2018	TS	00909



**NOTE: UNLESS OTHERWISE SPECIFIED.**

1. FOR ITEM 1 SPECIFICATIONS REFER TO PART SPECIFICATION FORM
2. LENGTH SHOWN IS AFTER SWAGING
3. ITEM 1 QTY FOR REFERENCE ONLY

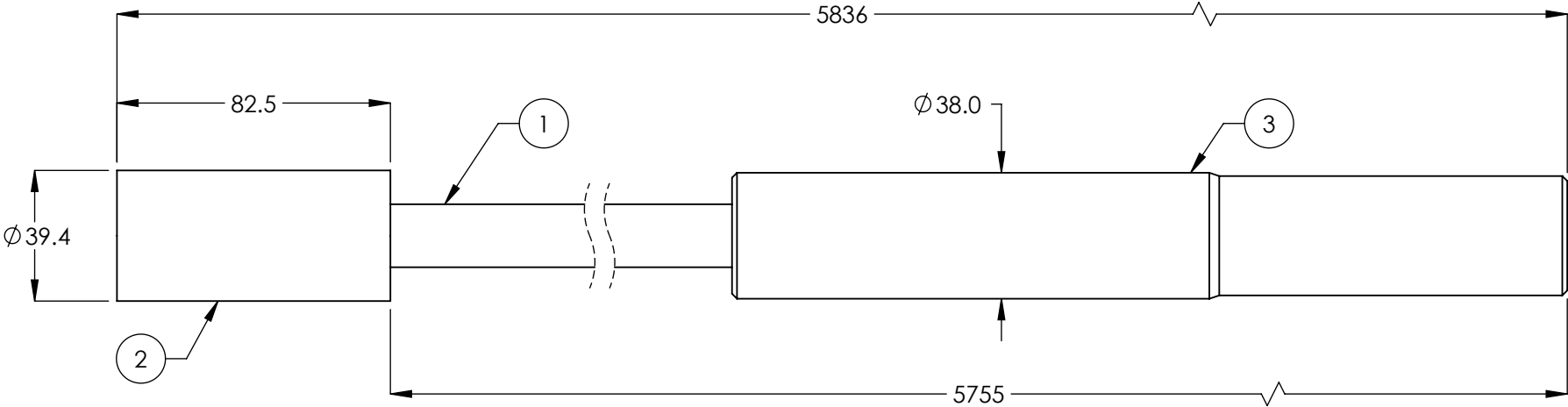
ITEM NO	PART NUMBER	DESCRIPTION	QTY.	REV
1	5595090	$\varnothing 19$ CABLE LIFTING	3903mm*	-
2	5746071	$\varnothing 19$ mm CABLE BUTTON	1	C
3	5746070	$\varnothing 19$ mm THREADED CABLE CONNECTOR	1	A

DO NOT SCALE DRAWING		NAME	DATE	<div> <b>BendPak.</b></div> <div>1645 LEMONWOOD DR. SANTA PAULA, CA 93060</div>	
<div>DIMENSIONS ARE IN MM TOLERANCES: 0. = ±1.5 0.0 = ±0.5</div> <div>ANGULAR: 0. = ±2°</div> <div>SURFACE FINISH 1.6 ISO Ra μm FOR MACHINED SURFACES UNLESS OTHERWISE SPECIFIED</div>		DRAWN	AC	05/16/2008	
		CHECKED	AW	1/19/2018	
		THIRD ANGLE PROJECTION			
		PROPRIETARY AND CONFIDENTIAL THE INFORMATION CONTAINED IN THIS DRAWING IS THE SOLE PROPERTY OF <b>BENDPAK INC.</b> ANY REPRODUCTION IN PART OR AS A WHOLE WITHOUT THE WRITTEN PERMISSION OF <b>BENDPAK INC.</b> IS PROHIBITED.		TITLE: HDS-35 SERIES CABLE ASSY Ø19 x 4102mm ST	
		SIZE DWG. NO.		REV	
		A 5595810		F	
		SCALE: 1:2		SHEET 1 OF 1	

NEXT ASSEMBLY
5250177
5250179




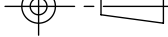
REVISION				
REV.	DESCRIPTION	DATE	EDITED BY	ECO#
D	5836 WAS 5887, 5755 WAS 5804, UDPATED TITLE	04/19/2011	MT	00455
D-001	UPDATED NEXT ASSEMBLIES	05/21/2013	TM	00593
E	UPDATED TITLE TO REFLECT WHERE USED, UPDATED NEXT ASSEMBLIES	09/04/2015	TM	00724
F	UPDATED BOM REVISION	01/03/2018	TS	00909



**NOTE: UNLESS OTHERWISE SPECIFIED.**

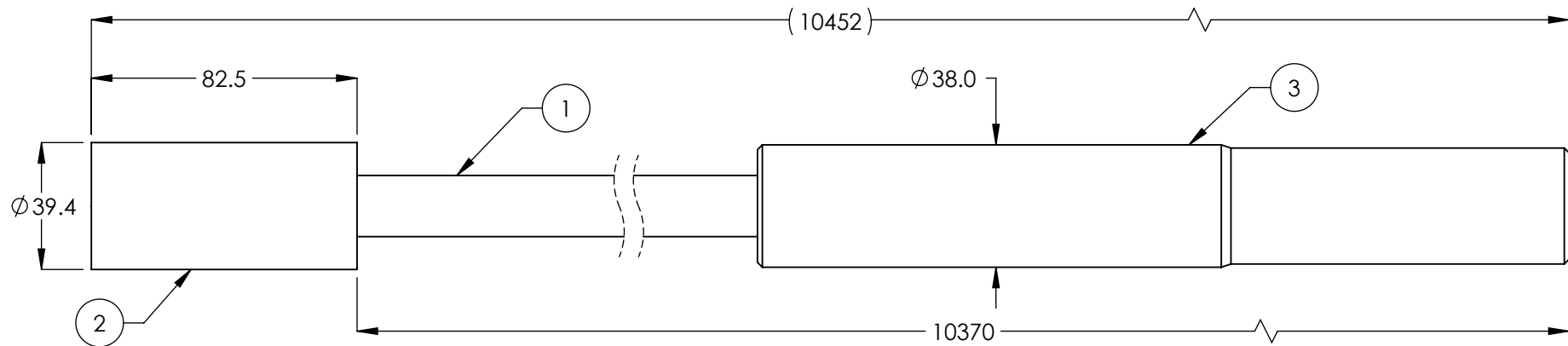
1. FOR ITEM 1 SPECIFICATIONS REFER TO PART SPECIFICATION FORM
2. LENGTH SHOWN IS AFTER SWAGING
3. ITEM 1 QTY FOR REFERENCE ONLY

ITEM NO	PART NUMBER	DESCRIPTION	QTY.	REV
1	5595090	Ø19 CABLE LIFTING	5638mm*	-
2	5746071	Ø19mm CABLE BUTTON	1	C
3	5746070	Ø19mm THREADED CABLE CONNECTOR	1	A

DO NOT SCALE DRAWING		NAME	DATE	 1645 LEMONWOOD DR. SANTA PAULA, CA 93060	
DIMENSIONS ARE IN MM TOLERANCES:  0. = ±1.5 0.0 = ±0.5  ANGULAR: 0. = ±2°  SURFACE FINISH 1.6 ISO Ra µm FOR MACHINED SURFACES UNLESS OTHERWISE SPECIFIED	DRAWN	AC	05/16/2008	TITLE: HDS-35 SERIES CABLE ASSY Ø19 x 5836mm ST	
	CHECKED	AW	1/19/2018		
	THIRD ANGLE PROJECTION			SIZE DWG. NO. REV <div>A5595811F</div>	
					
PROPRIETARY AND CONFIDENTIAL THE INFORMATION CONTAINED IN THIS DRAWING IS THE SOLE PROPERTY OF BENDPAK INC. ANY REPRODUCTION IN PART OR AS A WHOLE WITHOUT THE WRITTEN PERMISSION OF BENDPAK INC. IS PROHIBITED.			SCALE: 1:2		
			SHEET 1 OF 1		

NEXT ASSEMBLY
5250177
5250179

REVISION				
REV	DESCRIPTION	DATE	EDITED BY	ECO#
D	10452 WAS 10548, 10370 WAS 10465, UPDATED TITLE	04/19/2011	MT	00455
D-001	UPDATED NEXT ASSEMBLIES	05/21/2013	TM	00593
E	UPDATED TITLE TO REFLECT WHERE USED, UPDATED NEXT ASSEMBLIES	09/24/2015	TM	00724
F	UPDATED BOM REVISION	01/03/2018	TS	00909



**NOTE: UNLESS OTHERWISE SPECIFIED.**

1. FOR ITEM 1 SPECIFICATIONS REFER TO PART SPECIFICATION FORM
2. LENGTH SHOWN IS AFTER SWAGING
3. ITEM 1 QTY FOR REFERENCE ONLY

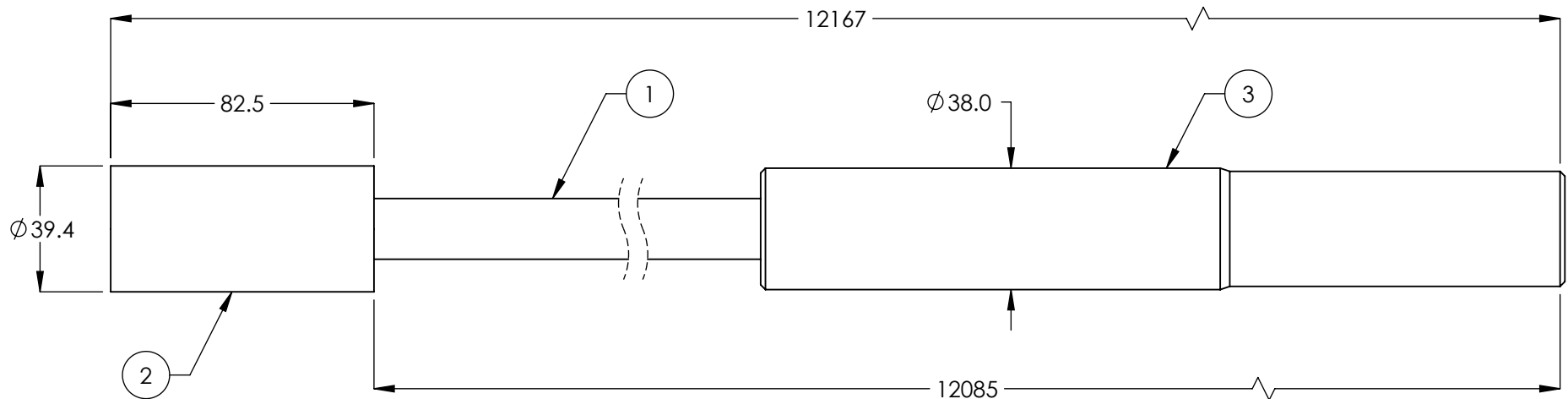
NEXT ASSEMBLY  
5250177

ITEM NO	PART NUMBER	DESCRIPTION	QTY.	REV
1	5595090	Ø19 CABLE LIFTING	10253mm*	-
2	5746071	Ø19mm CABLE BUTTON	1	C
3	5746070	Ø19mm THREADED CABLE CONNECTOR	1	A

DO NOT SCALE DRAWING		NAME	DATE	 1645 LEMONWOOD DR. SANTA PAULA, CA 93060
		DRAWN	AC	
		CHECKED	AW	
DIMENSIONS ARE IN MM TOLERANCES: 0. = ±1.5 0.0 = ±0.5 ANGULAR: 0. = ±2° SURFACE FINISH 1.6 ISO Ra µm FOR MACHINED SURFACES UNLESS OTHERWISE SPECIFIED		THIRD ANGLE PROJECTION 		TITLE: HDS-35 CABLE ASSY Ø19 x 10452mm ST
A		SIZE	DWG. NO.	REV
			5595812	F
SCALE: 1:2			SHEET 1 OF 1	

PROPRIETARY AND CONFIDENTIAL  
THE INFORMATION CONTAINED IN THIS DRAWING IS  
THE SOLE PROPERTY OF BENDPAK INC. ANY  
REPRODUCTION IN PART OR AS A WHOLE WITHOUT  
THE WRITTEN PERMISSION OF BENDPAK INC. IS  
PROHIBITED.

REVISION				
REV	DESCRIPTION	DATE	EDITED BY	ECO#
D	12167 WAS 12237, 12085 WAS 12154, UPDATED TITLE	04/19/2011	MT	00455
D-001	UPDATED NEXT ASSEMBLIES	05/21/2013	TM	00593
E	UPDATED TITLE TO REFLECT WHERE USED, UPDATED NEXT ASSEMBLIES	09/24/2015	TM	00724
F	UPDATED BOM REVISION	01/03/2018	TS	00909



**NOTE: UNLESS OTHERWISE SPECIFIED.**

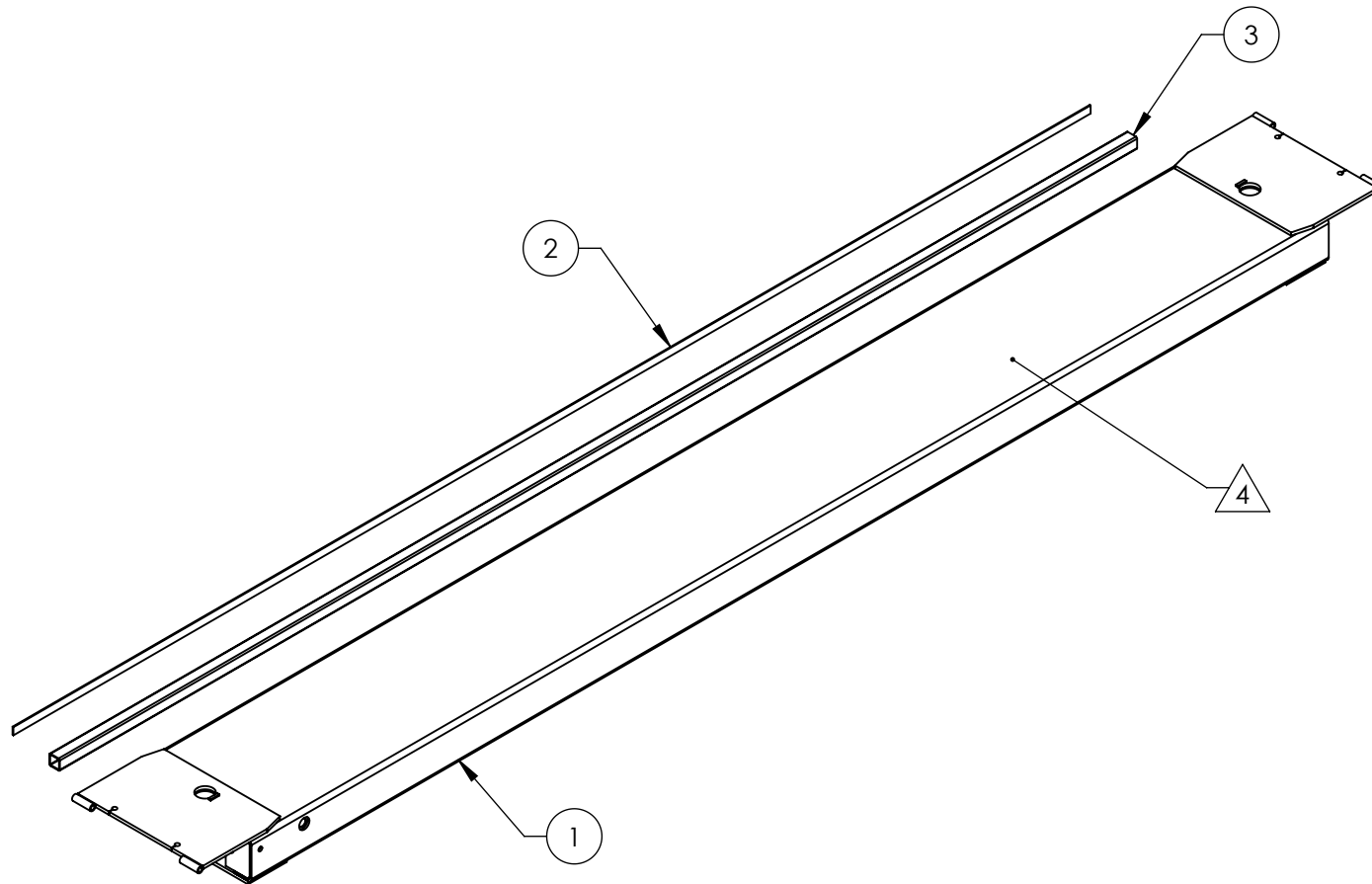
1. FOR ITEM 1 SPECIFICATIONS REFER TO PART SPECIFICATION FORM
2. LENGTH SHOWN IS AFTER SWAGING
3. ITEM 1 QTY FOR REFERENCE ONLY

ITEM NO	PART NUMBER	DESCRIPTION	QTY.	REV
1	5595090	Ø19 CABLE LIFTING	11968mm*	-
2	5746071	Ø19mm CABLE BUTTON	1	C
3	5746070	Ø19mm THREADED CABLE CONNECTOR	1	A

DO NOT SCALE DRAWING		NAME	DATE	 1645 LEMONWOOD DR. SANTA PAULA, CA 93060	
DRAWN		AC	05/16/2008		
CHECKED		AW	1/19/2018		
DIMENSIONS ARE IN MM TOLERANCES: 0. = ±1.5 0.0 = ±0.5 ANGULAR: 0. = ±2° SURFACE FINISH 1.6 ISO Ra µm FOR MACHINED SURFACES UNLESS OTHERWISE SPECIFIED				THIRD ANGLE PROJECTION 	
TITLE: HDS-35 CABLE ASSY Ø19 x 12167mm ST				SIZE DWG. NO. REV <b>A</b> 5595813 F	
PROPRIETARY AND CONFIDENTIAL THE INFORMATION CONTAINED IN THIS DRAWING IS THE SOLE PROPERTY OF BENDPAK INC. ANY REPRODUCTION IN PART OR AS A WHOLE WITHOUT THE WRITTEN PERMISSION OF BENDPAK INC. IS PROHIBITED.				SCALE: 1:2 SHEET 1 OF 1	

NEXT ASSEMBLY  
5250177

REVISION				
REV	DESCRIPTION	DATE	EDITED BY	ECO#
G	UPDATED BOM REVISION	05/01/2013	TM	00593
H	UPDATED BOM REVISION	12/08/2015	JM	00724
J	ADDED RAL NUMBER TO NOTES, UPDATED BOM REVISIONS	01/20/2017	TS	00798



**NOTE: UNLESS OTHERWISE SPECIFIED.**


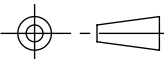
1. BREAK AND DEBURR ALL SHARP EDGES 0.3mm
2. REMOVE ALL WELD SPLATTER
3. PAINT BENDPAK GREY (RAL-7024)



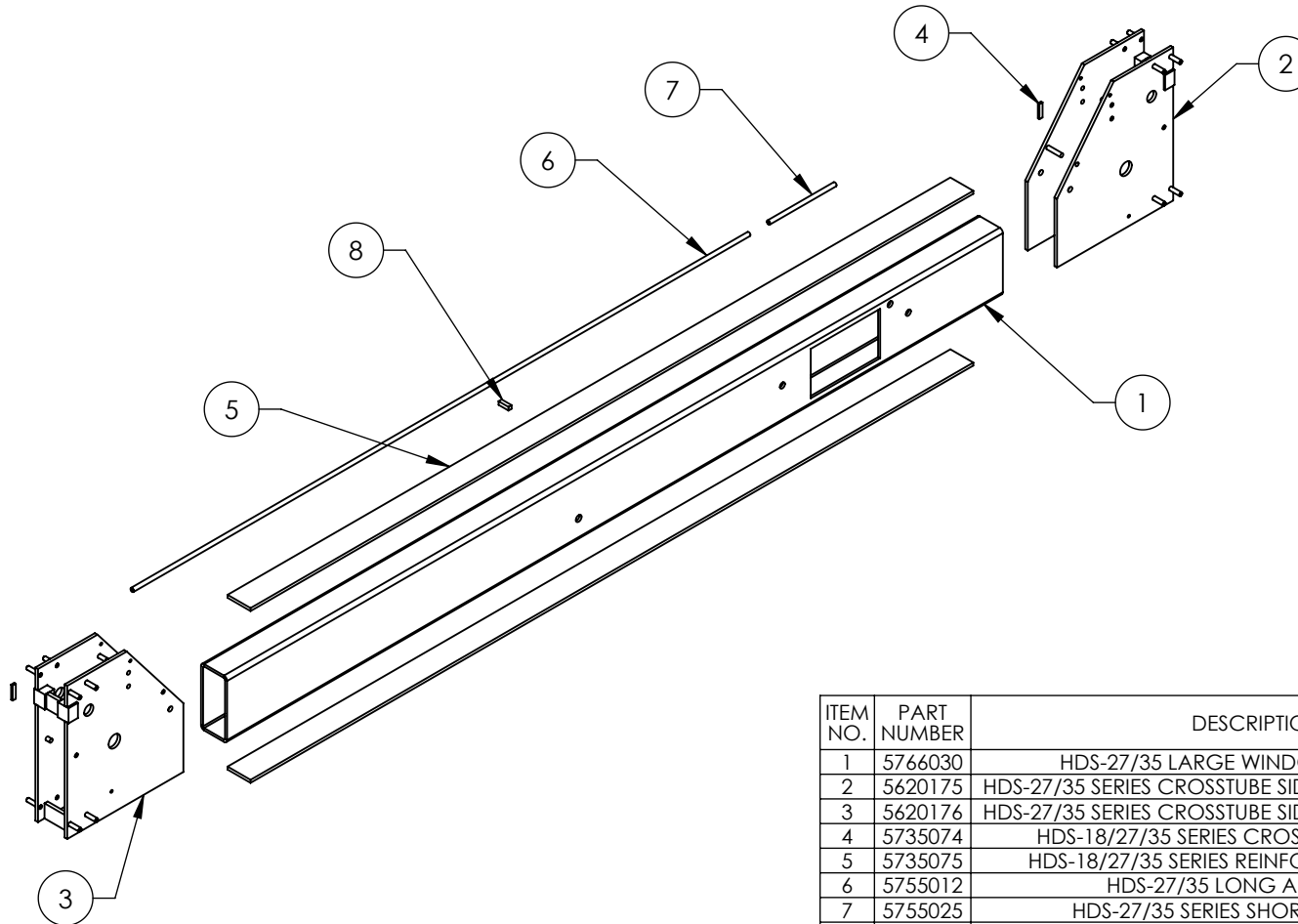
APPLY #30 GRIT ALUMINUM OXIDE WHEN PAINTING TO TOP ONLY

NEXT ASSEMBLY  
5215240


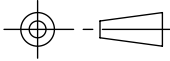
ITEM NO	PART NUMBER	DESCRIPTION		QTY	REV
1	5620195	HDS-35 POWER SIDE RAMP WELDMENT		1	G
2	5735086	HDS-18E/27/35 SERIES ROLLING JACK PLATE		1	C
3	5765020	HDS-18E/27/35 ROLLING JACK TUBE		1	C

DO NOT SCALE DRAWING		NAME	DATE	 1645 LEMONWOOD DR. SANTA PAULA, CA 93060
<div>DIMENSIONS ARE IN MM TOLERANCES: 0. = ±1.5 0.0 = ±0.5  ANGULAR: 0. = ±2°  SURFACE FINISH 1.6 ISO Ra µm FOR MACHINED SURFACES UNLESS OTHERWISE SPECIFIED</div>	DRAWN	GJZ	10/17/2008	
	CHECKED	DB	2/17/2017	
		THIRD ANGLE PROJECTION		TITLE:
				HDS-35 POWER SIDE RAMP WELDMENT
		PROPRIETARY AND CONFIDENTIAL THE INFORMATION CONTAINED IN THIS DRAWING IS THE SOLE PROPERTY OF BENDPAK INC. ANY REPRODUCTION IN PART OR AS A WHOLE WITHOUT THE WRITTEN PERMISSION OF BENDPAK INC. IS PROHIBITED.		SIZE DWG. NO. REV
				A 5600073 J
				SCALE: 1:30 SHEET 1 OF 2

REVISION				
REV	DESCRIPTION	DATE	EDITED BY	ECO#
L	UPDATED RAL NUMBER WAS 7015 NOW 7024, UPDATED BOM REVISIONS	01/18/2017	TS	00798
M	UPDATED BOM REVISIONS	12/18/2017	TM	00909
N	5735075 WAS FLUSH NOW 12 2PL, WAS 31 NOW 19, UPDATED TITLE TO REFLECT WHERE USED, UPDAT BOM REVISIONS	03/14/2018	TM	00927



ITEM NO.	PART NUMBER	DESCRIPTION	QTY	REV
1	5766030	HDS-27/35 LARGE WINDOW CROSSTUBE	1	A
2	5620175	HDS-27/35 SERIES CROSSTUBE SIDE PLATE WELDMENT #1	1	K
3	5620176	HDS-27/35 SERIES CROSSTUBE SIDE PLATE WELDMENT #2	1	K
4	5735074	HDS-18/27/35 SERIES CROSSTUBE SHAFT STOP	2	C
5	5735075	HDS-18/27/35 SERIES REINFORCER, CROSSTUBE	2	B
6	5755012	HDS-27/35 LONG AIR LINE PIPE	1	B
7	5755025	HDS-27/35 SERIES SHORT AIR LINE PIPE	1	B
8	5760003	HD-12/14 RAMP STOP	1	C

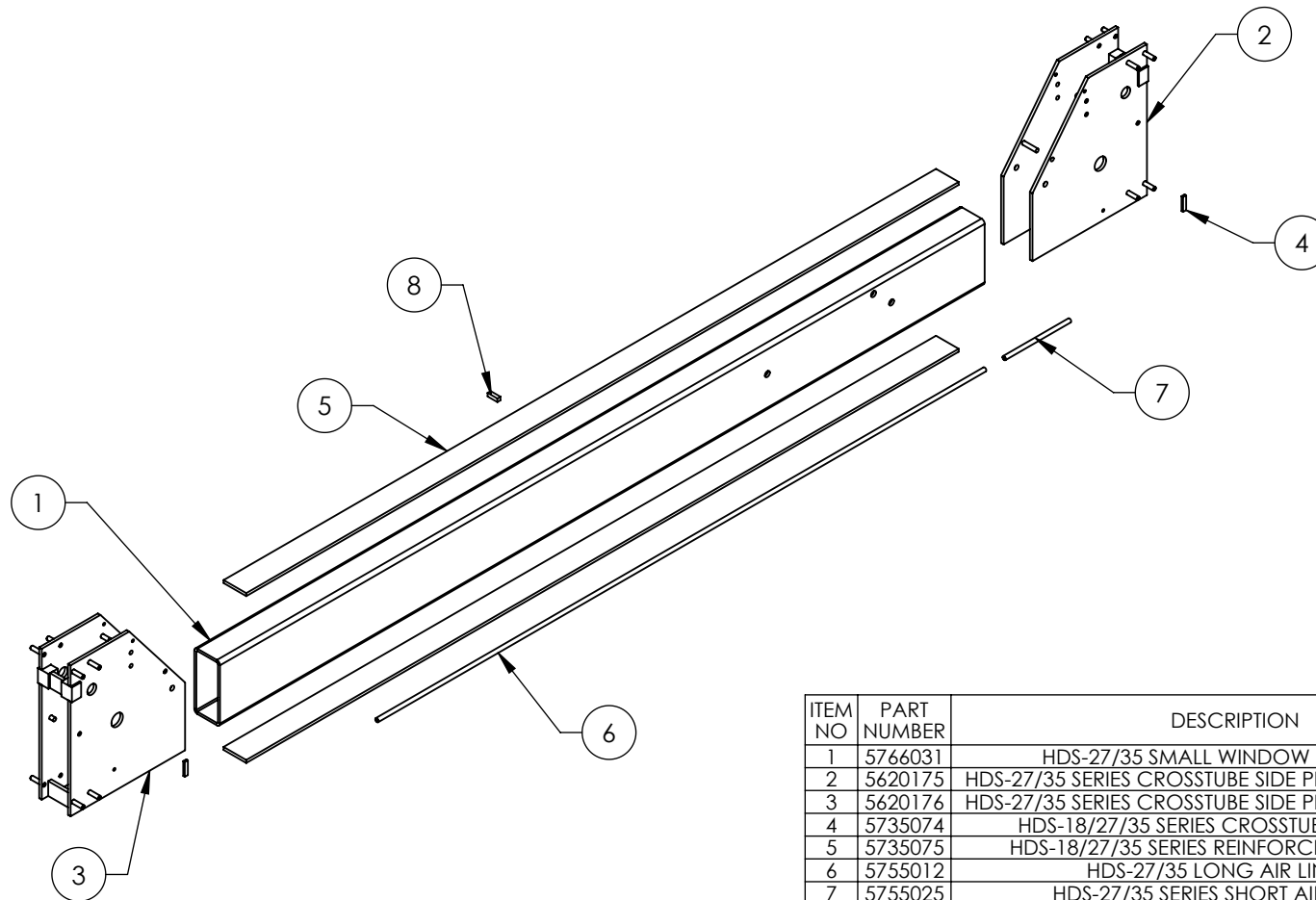
DO NOT SCALE DRAWING		NAME	DATE	 1645 LEMONWOOD DR. SANTA PAULA, CA 93060	
DRAWN		GJZ	09/18/2008		
CHECKED		CA	4/6/2018		
DIMENSIONS ARE IN MM TOLERANCES: 0. = ±1.5 0.0 = ±0.5 ANGULAR: 0. = ±2° SURFACE FINISH 1.6 ISO Ra µm FOR MACHINED SURFACES UNLESS OTHERWISE SPECIFIED		THIRD ANGLE PROJECTION		 <b>PROPRIETARY AND CONFIDENTIAL</b> THE INFORMATION CONTAINED IN THIS DRAWING IS THE SOLE PROPERTY OF <b>BENDPAK INC.</b> ANY REPRODUCTION IN PART OR AS A WHOLE WITHOUT THE WRITTEN PERMISSION OF <b>BENDPAK INC.</b> IS PROHIBITED.	
TITLE: HDS-18/27 SERIES LARGE WINDOW CROSSTUBE WELDMENT		SIZE	DWG. NO.	REV	
		A	5600279	N	
SCALE: 1:20				SHEET 1 OF 2	

**NOTE: UNLESS OTHERWISE SPECIFIED.**



- BREAK AND DEBURR ALL SHARP EDGES 0.3mm
- REMOVE ALL WELD SPLATTER
- PAINT BENDPAK GREY ( RAL-7024)

NEXT ASSEMBLY
5215598
5215608

REVISION				
REV	DESCRIPTION	DATE	EDITED BY	ECO#
L	UPDATED BOM REVISION	01/19/2017	TS	00798
M	UPDATED BOM REVISIONS	12/19/2017	TM	00909
N	5735075 WAS FLUSH NOW 12 2PL, UPDATED TITLE TO REFLECT WHERE USED, UPDATE BOM REVISION	03/14/2018	TM	00927



ITEM NO	PART NUMBER	DESCRIPTION	QTY	REV
1	5766031	HDS-27/35 SMALL WINDOW CROSSTUBE	1	A
2	5620175	HDS-27/35 SERIES CROSSTUBE SIDE PLATE WELDMENT #1	1	K
3	5620176	HDS-27/35 SERIES CROSSTUBE SIDE PLATE WELDMENT #2	1	K
4	5735074	HDS-18/27/35 SERIES CROSSTUBE SHAFT STOP	2	C
5	5735075	HDS-18/27/35 SERIES REINFORCER, CROSSTUBE	2	B
6	5755012	HDS-27/35 LONG AIR LINE PIPE	1	B
7	5755025	HDS-27/35 SERIES SHORT AIR LINE PIPE	1	B
8	5760003	HD-12/14 RAMP STOP	1	C

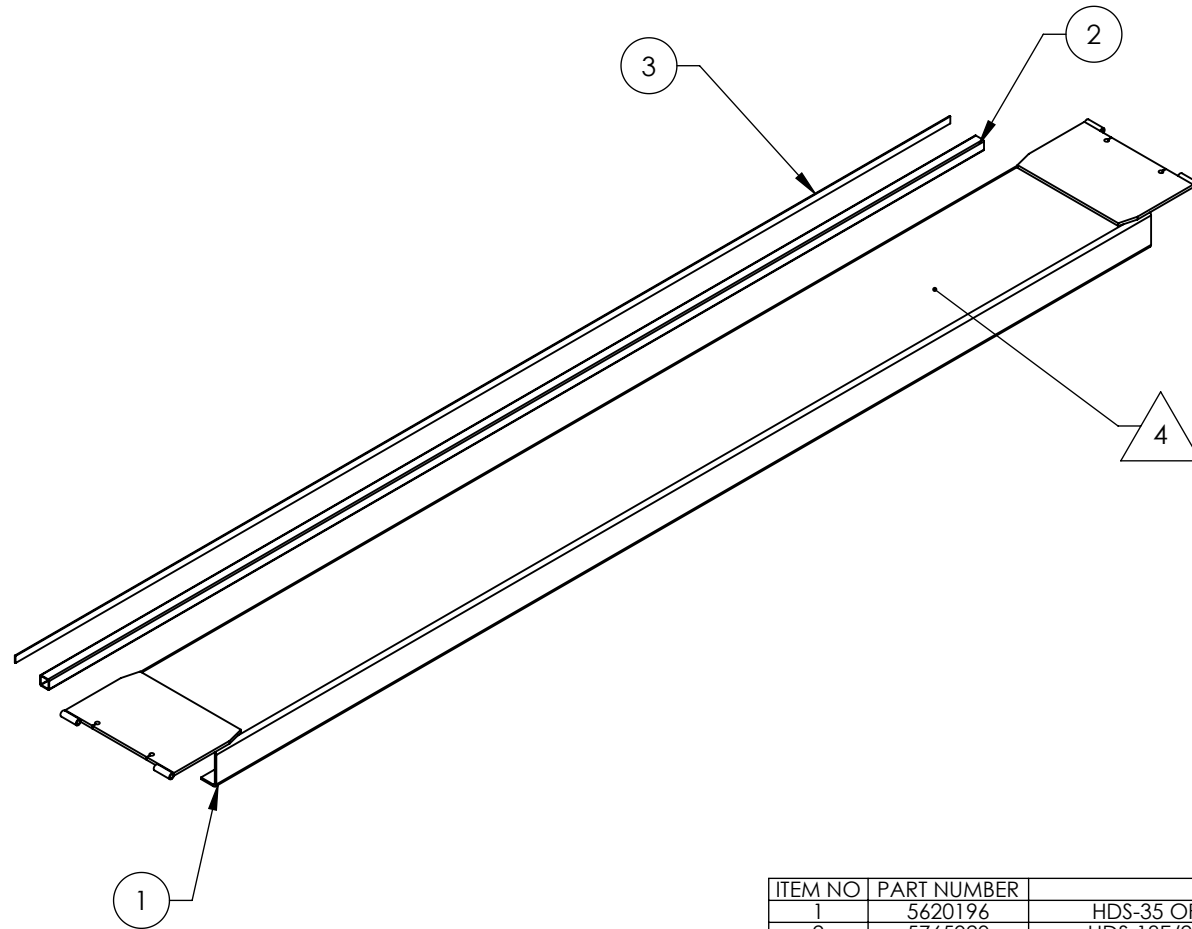
DO NOT SCALE DRAWING		NAME	DATE		
<p>DIMENSIONS ARE IN MM TOLERANCES: 0. = ±1.5 0.0 = ±0.5</p> <p>ANGULAR: 0. = ±2°</p> <p>SURFACE FINISH 1.6 ISO Ra μm FOR MACHINED SURFACES UNLESS OTHERWISE SPECIFIED</p>		DRAWN	GJZ	09/18/2008	1645 LEMONWOOD DR. SANTA PAULA, CA 93060
		CHECKED	CA	4/6/2018	
		THIRD ANGLE PROJECTION			
		PROPRIETARY AND CONFIDENTIAL THE INFORMATION CONTAINED IN THIS DRAWING IS THE SOLE PROPERTY OF <b>BENDPAK INC.</b> ANY REPRODUCTION IN PART OR AS A WHOLE WITHOUT THE WRITTEN PERMISSION OF <b>BENDPAK INC.</b> IS PROHIBITED.			
		SIZE	DWG. NO.	REV	
		A 5600293		N	
SCALE: 1:20				SHEET 1 OF 2	

**NOTE: UNLESS OTHERWISE SPECIFIED.**

1. BREAK AND DEBURR ALL SHARP EDGES 0.3mm
2. REMOVE ALL WELD SPLATTER
3. PAINT BENDPAK GREY (RAL-7024)

NEXT ASSEMBLY
5215604
5215609


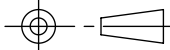
REVISION				
REV	DESCRIPTION	DATE	EDITED BY	ECO#
B	UPDATED BOM REVISIONS	09/01/2009	AC	00297
C	UPDATED BOM REVISIONS	11/02/2009	AC	00312
D	UPDATED BOM REVISION	01/19/2011	TM	00431
D-001	UPDATED NEXT ASSEMBLY	05/21/2013	TM	00593
D-002	UPDATED NEXT ASSEMBLY	09/26/2014	TM	00666
D-003	ADDED RAL NUMBER TO NOTES	01/20/2017	TS	00798



**NOTE: UNLESS OTHERWISE SPECIFIED.**

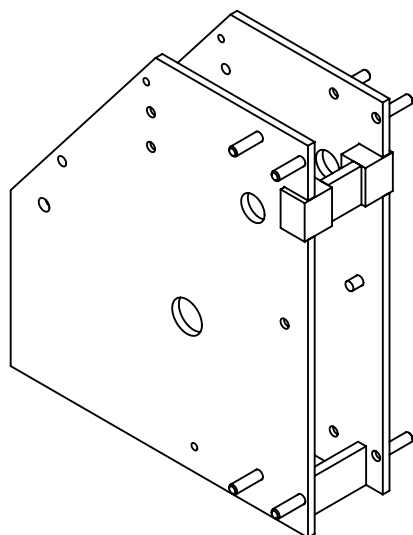
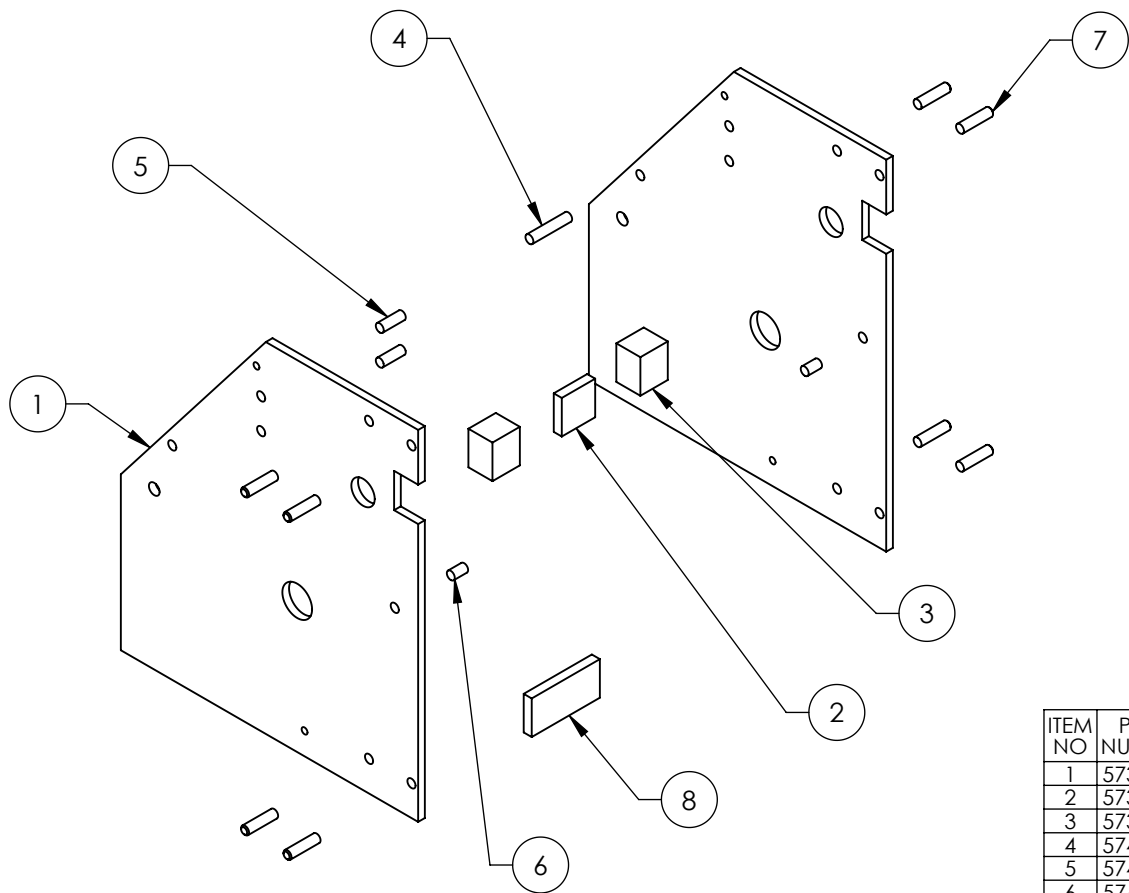
1. BREAK AND DEBURR ALL SHARP EDGES 0.3mm
2. REMOVE ALL WELD SPLATTER
3. PAINT BENDPAK GREY (RAL-7024)
4. APPLY #30 GRIT ALUMINUM OXIDE WHEN PAINTING TO TOP ONLY

ITEM NO	PART NUMBER	DESCRIPTION	QTY	REV
1	5620196	HDS-35 OFF SIDE RAMP WELDMENT	1	D
2	5765020	HDS-18E/27/35 ROLLING JACK TUBE	1	C
3	5735086	HDS-18E/27/35 SERIES ROLLING JACK PLATE	1	C

DO NOT SCALE DRAWING		NAME	DATE	<div></div> <div>1645 LEMONWOOD DR. SANTA PAULA, CA 93060</div>	
DIMENSIONS ARE IN MM TOLERANCES:  0. = ±1.5 0.0 = ±0.5  ANGULAR: 0. = ±2°  SURFACE FINISH 1.6 ISO Ra µm FOR MACHINED SURFACES UNLESS OTHERWISE SPECIFIED		DRAWN	AC	TITLE:  HDS-35 OFF SIDE RAMP WELDMENT	
		CHECKED	DB		
		THIRD ANGLE PROJECTION			
				SIZE DWG. NO.	
		<div>PROPRIETARY AND CONFIDENTIAL</div> <div>THE INFORMATION CONTAINED IN THIS DRAWING IS THE SOLE PROPERTY OF <b>BENDPAK INC.</b> ANY REPRODUCTION IN PART OR AS A WHOLE WITHOUT THE WRITTEN PERMISSION OF <b>BENDPAK INC.</b> IS PROHIBITED.</div>		<div>A</div>	5600476
				SCALE: 1:35	
				SHEET 1 OF 2	


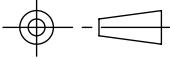
NEXT ASSEMBLY  
5245015

REVISION				
REV	DESCRIPTION	DATE	EDITED BY	ECO#
H	ADDED 125 DIMENSION ON SHEET 2	01/04/2016	JM	00741
J	ADDED 25 DIMENSIONS TO SHEET 2, UPDATED BOM REVISION	01/19/2017	TS	00798
K	UPDATED BOM REVISION	12/18/2017	TM	00909



ISOMETRIC VIEW  
FOR REFERENCE ONLY  
DO NOT SCALE

ITEM NO	PART NUMBER	DESCRIPTION	QTY	REV
1	5731008	HDS-27/35 SERIES CROSSTUBE SIDE PLATE #1	2	H
2	5735076	HDS-27/35 SERIES SAFETY STOP BLOCK SUPPORT	1	B
3	5735077	HDS-27/35 SERIES EAR BLOCK SUPPORT	2	B
4	5746077	HDS-27/35 SERIES CLEVIS PIN, AIR CYLINDER	1	B
5	5746078	HDS-18/27/35 SERIES SPRING CLEVIS PIN	2	C
6	5746079	HDS-27/35 SERIES SAFETY STOP PIN	2	B
7	5746082	HDS-27/35 SERIES PLASTIC SLIDE BLOCK PIN	8	B
8	5735078	HDS-27/35 SERIES EAR TIE BAR	1	C

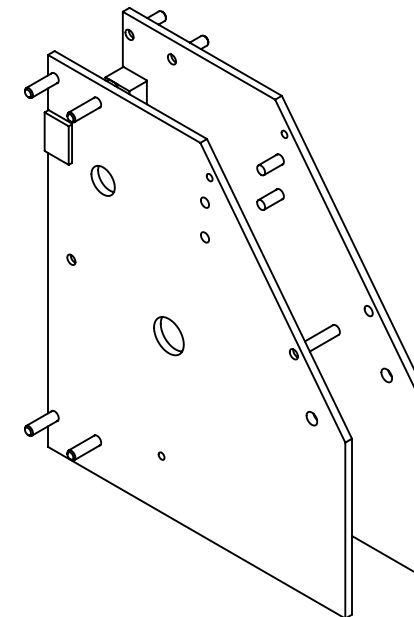
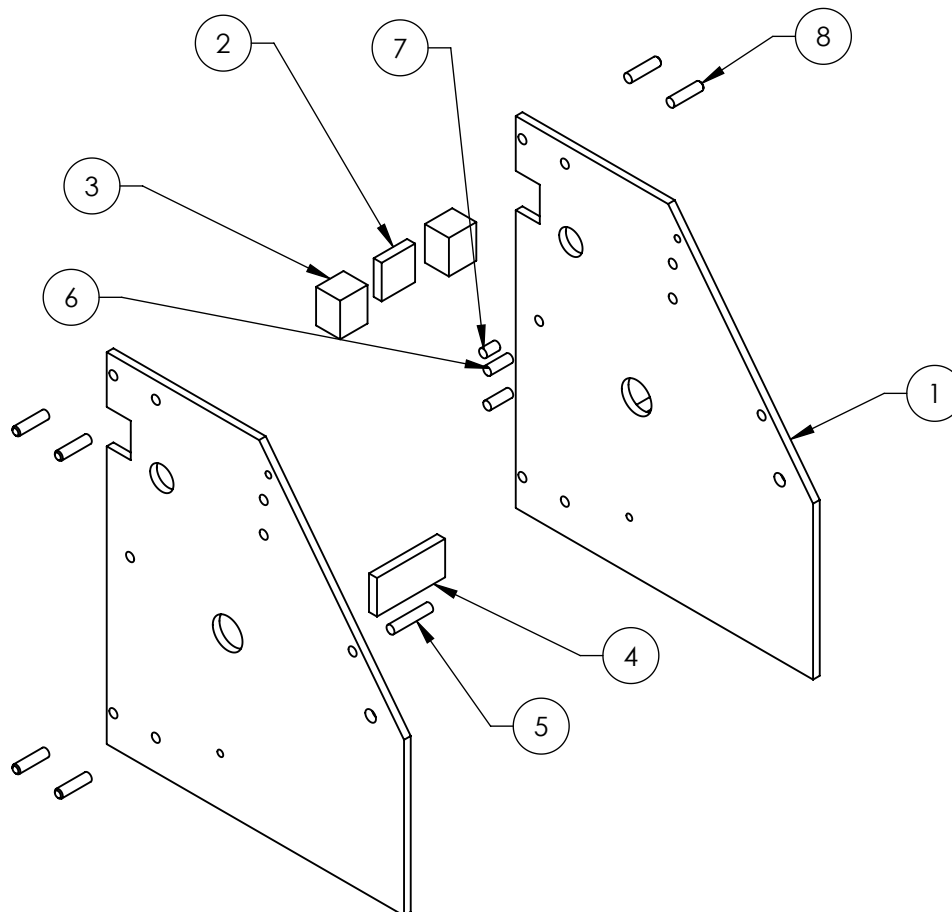
DO NOT SCALE DRAWING		NAME	DATE	 1645 LEMONWOOD DR. SANTA PAULA, CA 93060	
DRAWN		GJZ	09/18/2008		
CHECKED		AW	1/22/2018		
DIMENSIONS ARE IN MM TOLERANCES: 0. = ±1.5 0.0 = ±0.5 ANGULAR: 0. = ±2° SURFACE FINISH 1.6 ISO Ra μm FOR MACHINED SURFACES UNLESS OTHERWISE SPECIFIED		THIRD ANGLE PROJECTION		TITLE: HDS-27/35 SERIES CROSSTUBE SIDE PLATE WELDMENT #1	
NEXT ASSEMBLY				SIZE DWG. NO.	REV
5600279		<small>PROPRIETARY AND CONFIDENTIAL THE INFORMATION CONTAINED IN THIS DRAWING IS THE SOLE PROPERTY OF BENDPAK INC. ANY REPRODUCTION IN PART OR AS A WHOLE WITHOUT THE WRITTEN PERMISSION OF BENDPAK INC. IS PROHIBITED.</small>		A 5620175	K
5600293		SCALE: 1:8		SHEET 1 OF 3	
5600597					

**NOTE: UNLESS OTHERWISE SPECIFIED.**

1. BREAK AND DEBURR ALL SHARP EDGES 0.3mm
2. REMOVE ALL WELD SPLATTER



REVISION				
REV	DESCRIPTION	DATE	EDITED BY	ECO#
H	ADDED 125 DIMENSION ON SHEET 3	01/04/2016	JM	00741
J	ADDED 25 DIMENSION ON SHEET 2, UPDATED BOM REVISION	01/19/2017	TS	00798
K	UPDATED BOM REVISION	12/18/2017	TM	00909



**ISOMETRIC VIEW  
FOR REFERENCE ONLY  
DO NOT SCALE**

ITEM NO	PART NUMBER	DESCRIPTION	QTY	REV
1	5731009	HDS-27/35 SERIES CROSSTUBE SIDE PLATE #2	2	J
2	5735076	HDS-27/35 SERIES SAFETY STOP BLOCK SUPPORT	1	B
3	5735077	HDS-27/35 SERIES EAR BLOCK SUPPORT	2	B
4	5735078	HDS-27/35 SERIES EAR TIE BAR	1	C
5	5746077	HDS-27/35 SERIES CLEVIS PIN, AIR CYLINDER	1	B
6	5746078	HDS-18/27/35 SERIES SPRING CLEVIS PIN	2	C
7	5746079	HDS-27/35 SERIES SAFETY STOP PIN	2	B
8	5746082	HDS-27/35 SERIES PLASTIC SLIDE BLOCK PIN	8	B

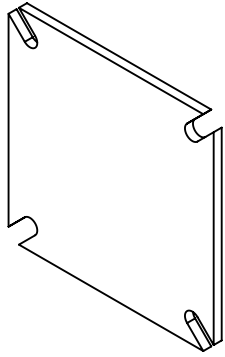
DO NOT SCALE DRAWING		NAME	DATE	<b>BendPak.</b> 1645 LEMONWOOD DR. SANTA PAULA, CA 93060 <b>TITLE:</b> HDS-27/35 SERIES CROSSTUBE SIDE PLATE WELDMENT #2	
DIMENSIONS ARE IN MM TOLERANCES: 0. = ±1.5 0.0 = ±0.5 ANGULAR: 0. = ±2° SURFACE FINISH 1.6 ISO Ra µm FOR MACHINED SURFACES UNLESS OTHERWISE SPECIFIED		DRAWN	GJZ 09/18/2008		
		CHECKED	AW 1/22/2018		
		THIRD ANGLE PROJECTION		<b>SIZE</b> DWG. NO. <b>REV</b> <b>A</b> 5620176 K	
		<small>PROPRIETARY AND CONFIDENTIAL  THE INFORMATION CONTAINED IN THIS DRAWING IS  THE SOLE PROPERTY OF BENDPAK INC. ANY  REPRODUCTION IN PART OR AS A WHOLE WITHOUT  THE WRITTEN PERMISSION OF BENDPAK INC. IS  PROHIBITED.</small>		<b>SCALE:</b> 1:8 <b>SHEET</b> 1 OF 3	

**NOTE: UNLESS OTHERWISE SPECIFIED.**

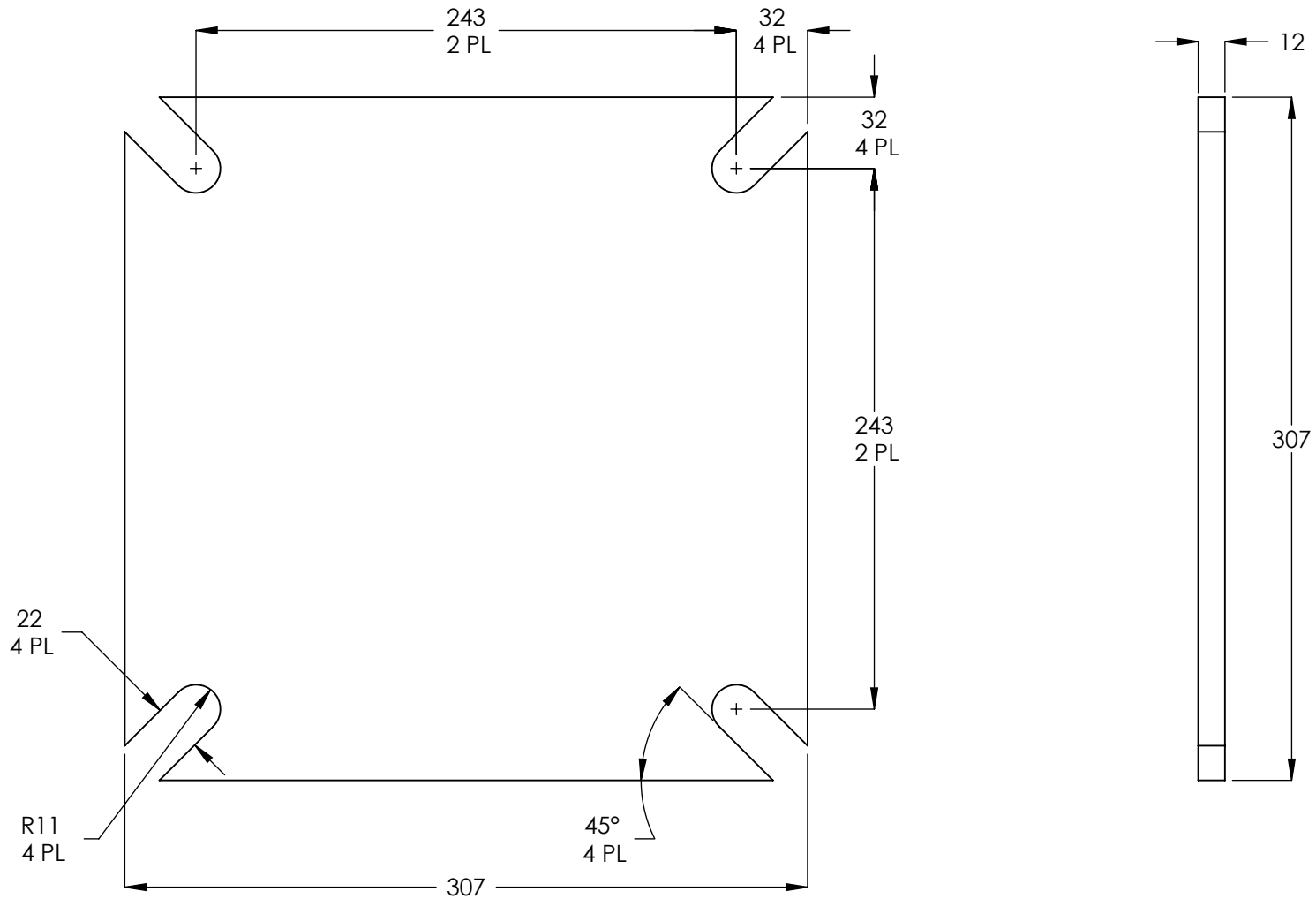
- BREAK AND DEBURR ALL SHARP EDGES 0.3mm
- REMOVE ALL WELD SPLATTER

NEXT ASSEMBLY
5600279
5600293
5600597

REVISION				
REV	DESCRIPTION	DATE	EDITED BY	ECO#
A	PRODUCTION RELEASE, DERIVED FROM 5730026	02/22/2017	TM	00798





ISOMETRIC VIEW  
FOR REFERENCE ONLY  
DO NOT SCALE



**NOTE: UNLESS OTHERWISE SPECIFIED.**

- BREAK AND DEBURR ALL SHARP EDGES 0.3mm
- MATERIAL:** HR ASTM A36 OR Q235 GB/T 700
- FLAME CUT PERMISSABLE

NEXT ASSEMBLY
5601141
5601143
5601144
5601145
5600978
5600980

DO NOT SCALE DRAWING		NAME		DATE		 <b>BendPak.</b>		
DIMENSIONS ARE IN MM TOLERANCES: MACHINE TO 0 = ±1.5 0.0 = ±0.5 0.00 = ±0.13 ANGULAR: MACHINE TO 0 = ±1/2°  SURFACE FINISH 1.6 Ra µm FOR MACHINED SURFACES UNLESS OTHERWISE SPECIFIED		DRAWN	TM	02/22/2017				
		CHECKED	DB	3/8/2017				
		THIRD ANGLE PROJECTION				TITLE:		
						HDS-18/27/35 SERIES BASE PLATE		
		PROPRIETARY AND CONFIDENTIAL THE INFORMATION CONTAINED IN THIS DRAWING IS THE SOLE PROPERTY OF <b>BENDPAK INC.</b> , ANY REPRODUCTION IN PART OR AS A WHOLE WITHOUT THE WRITTEN PERMISSION OF <b>BENDPAK INC.</b> IS PROHIBITED.				SIZE	DWG. NO.	REV
						<b>A</b>	5730077	<b>A</b>
		SCALE: 1:3						SHEET 1 OF 1

## PART SPECIFICATION FORM

<b>BENDPAK Number:</b>	5900160
<b>MRP Description:</b>	HDS TRUCK SERIES INSTALLATION MANUAL
<b>Date:</b>	03/07/2018
<b>ECO :</b>	00927

### 1. Engineering Specification

**Application:**

INSTALLATION MANUAL

**Detailed Description:**



### 2. Vendor Information

Approved Vendor	Vendor Part #	Contact #	Preferred Vendor
1)			

## PART SPECIFICATION FORM

<b>BENDPAK Number:</b>	5905103
<b>MRP Description:</b>	WARNING ALI/WL 200
<b>Date:</b>	05/06/2013
<b>ECO :</b>	00593

### 1. Engineering Specification

#### Application:

ALI 4 POST SAFETY STICKER KIT

#### Detailed Description:

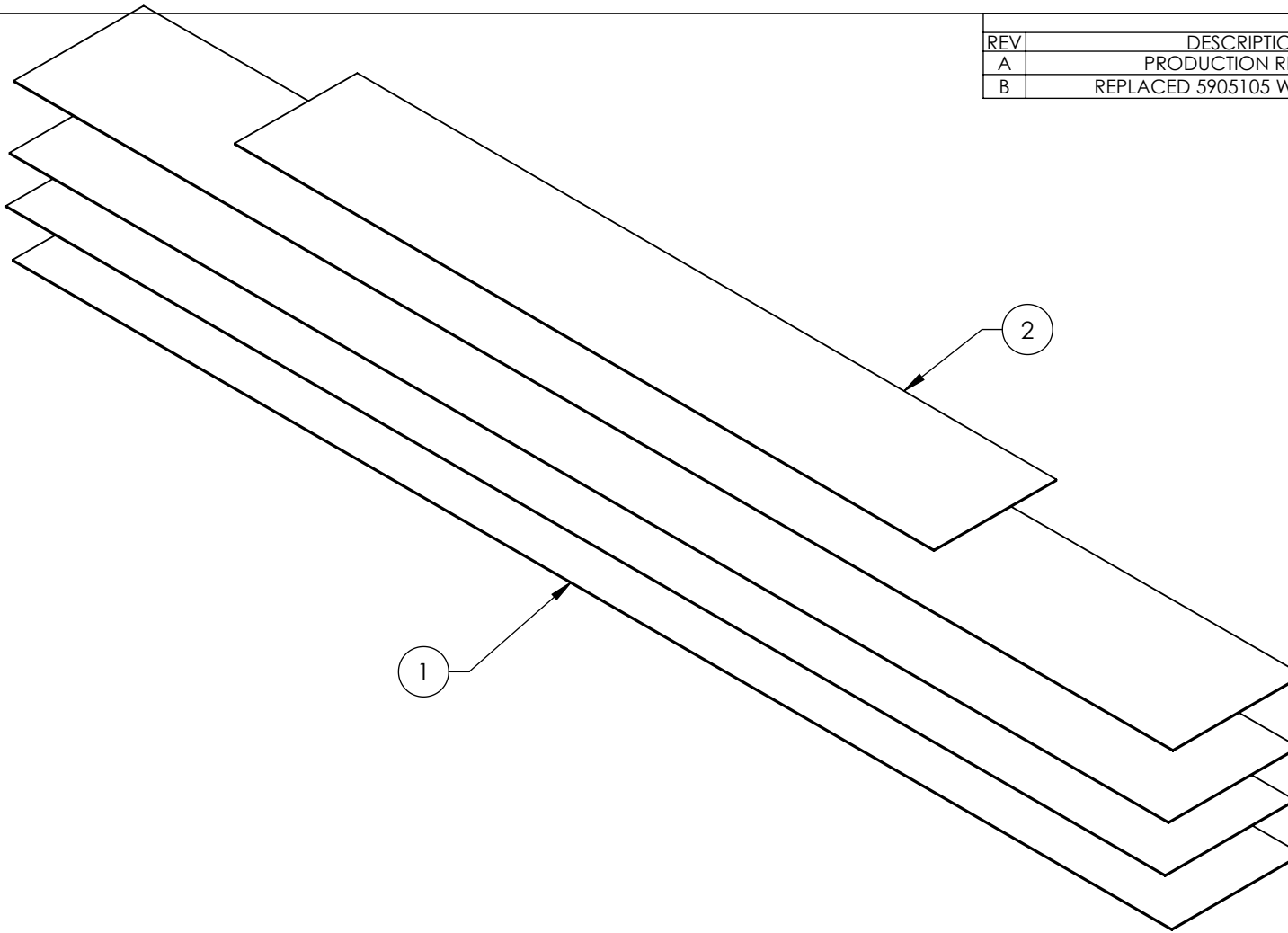




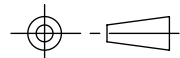
SIZE: 11" L x 8.5" W (279mm x 216mm)

### 2. Vendor Information

Approved Vendor	Vendor Part #	Contact #	Preferred Vendor
1)			

REVISION				
REV	DESCRIPTION	DATE	EDITED BY	ECO#
A	PRODUCTION RELEASE	05/06/2013	TM	00593
B	REPLACED 5905105 WITH 5905311	05/21/2015	TM	00683



ITEM NO	PART NUMBER	DESCRIPTION		QTY	REV	
1	5905311	BENDPAK LABEL; 4 x 38" WHITE INK		4	--	
2	5905556	4-POST SAFETY DECAL		1	--	
DO NOT SCALE DRAWING		NAME	DATE	 <b>BendPak.</b> 1645 LEMONWOOD DR. SANTA PAULA, CA 93060		
DIMENSIONS ARE IN MM  		DRAWN	TM 05/06/2013			
		CHECKED	CA 08/25/2015			
		THIRD ANGLE PROJECTION		TITLE: 4 POST DECAL KIT, LESS ALI		
		<p>PROPRIETARY AND CONFIDENTIAL</p> <p>THE INFORMATION CONTAINED IN THIS DRAWING IS THE SOLE PROPERTY OF <b>BENDPAK INC.</b> ANY REPRODUCTION IN PART OR AS A WHOLE WITHOUT THE WRITTEN PERMISSION OF <b>BENDPAK INC.</b> IS PROHIBITED.</p>		SIZE	DWG. NO.	REV
				<b>A</b>	5905200	<b>B</b>
SCALE: 1:4				SHEET 1 OF 1		

**NOTE: UNLESS OTHERWISE SPECIFIED.**

1. SEE RECEIVED LIFT FOR PLACEMENT

NEXT ASSEMBLY  
ALL 4-POST LIFTS

# 4 Post Lifts Product Decal Positioning

A



**CLEAR ADHESIVE PET.  
DOES NOT PRINT YELLOW.**

**Total of 4**

PN 5905311

## BPK Post Branding Decal-Large\_5905311.pdf:

Material: Clear Adhesive PET

Size: 4.25"W x 38"H

Thickness: 4 Mil

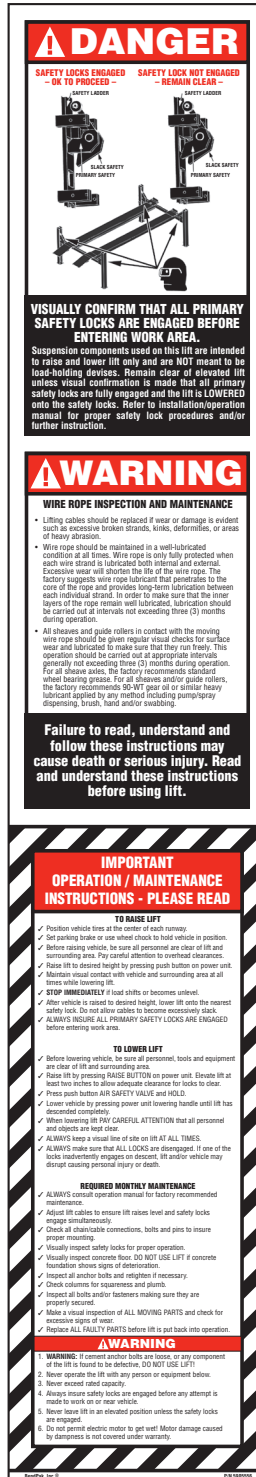
Finish: Polished

Ink: U.V. protected, Opaque White

Print Process: Silk Screen, 85 line-screen (Yellow color in file represents what should be clear PET material and SHOULD NOT print as Yellow ink. White area in file represents Opaque White ink.)

Lamination: Clear-gloss over-laminate for abrasion, chemical, and ultra violet protection

B



PN 5905556

## 4\_Post\_Safety\_Decal.pdf:

Size: 4"W x 23"H

Material: White Vinyl Pressure Sensitive Adhesive

Thickness: 4 Mil

Ink: U.V. protected CMYK 2/C Process

Finish: Polished

Print Process: Offset Lithography - 200 line-screen or 300 p.p.i. for digital

Lamination: Clear-gloss over-laminate for abrasion, chemical, and ultra violet protection

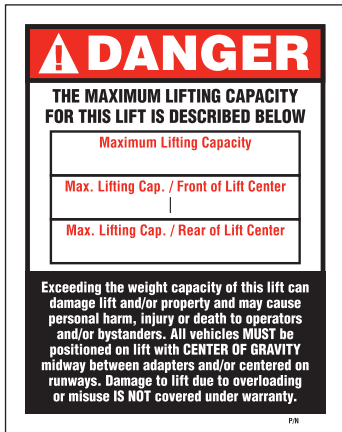
C



**Ali\_4\_Post\_labels.pdf:**  
(Order Labels from ALI)

# 4 Post Lifts Product Decal Positioning

**\*D**



P/N 5905401 - Max Cap. Danger 7k  
P/N 5905695 - Max. Cap. Danger 7500  
P/N 5905402 - Max Cap. Danger 9k  
P/N 5905557 - Max. Cap. Danger 14K  
P/N 5905406 - Max Cap. Danger 18k  
P/N 5905407 - Max. Cap. Danger 27K  
P/N 5905408 - Max. Cap. Danger 35K  
P/N 5905409 - Max. Cap. Danger 40K

**\*Max. Cap. Danger.pdf:**

Size: 4"W x 5"H

Material: White Vinyl Pressure Sensitive Adhesive

Thickness: 4 Mil

Ink: U.V. protected CMYK 2/C Process

Finish: Polished

Print Process: Offset Lithography - 200 line-screen or 300 p.p.i. for digital

Lamination: Clear-gloss over-laminate for abrasion, chemical, and ultra violet protection

**\*E**



P/N 5905645 - NRTL\_Lifting\_Cap\_Label\_7K  
P/N 5905700 - NRTL\_Lifting\_Cap\_Label\_7500  
P/N 5905650 - NRTL\_Lifting\_Cap\_Label\_9k  
P/N 5905665 - NRTL\_Lifting\_Cap\_Label\_14k  
P/N 5905675 - NRTL\_Lifting\_Cap\_Label\_18k  
P/N 5905680 - NRTL\_Lifting\_Cap\_Label\_27k  
P/N 5905685 - NRTL\_Lifting\_Cap\_Label\_35K  
P/N 5905690 - NRTL\_Lifting\_Cap\_Label\_40K

**\*NRTL\_Lifting\_Cap\_Label\_.pdf:**

Size: 4.5"W x 3.25"H

Material: White Vinyl Pressure Sensitive Adhesive

Thickness: 4 Mil

Ink: U.V. protected CMYK 2/C Process

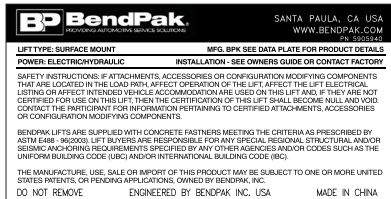
Finish: Polished

Print Process: Offset Lithography - 200 line-screen or 300 p.p.i. for digital

Lamination: Clear-gloss over-laminate for abrasion, chemical, and ultra violet protection

**\*DEPENDS ON LIFT MODEL AND CAPACITY**

**F**



PN 5905940

**Product\_Data\_Label\_5905940-New.pdf:**

Size: 4.5"W x 2.3"H

Material: White Vinyl Pressure Sensitive Adhesive

Thickness: 4 Mil

Ink: U.V. protected CMYK 2/C Process

Finish: Polished

Print Process: Offset Lithography - 200 line-screen or 300 p.p.i. for digital

Lamination: Clear-gloss over-laminate for abrasion, chemical, and ultra violet protection

**G**



**ALI\_Notice\_Label.jpg**

Size: 3"W x 1.75"H

(Order Label from ALI)

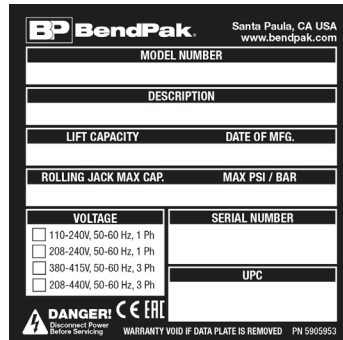
**H**



**ALI-Gold-Label.jpg**

**\*\*FOR ALI APPROVED LIFTS ONLY**

**I**



PN 5905953

**2017\_Serial\_Tag-D.jpg:**

Size: 3"W x 3"H

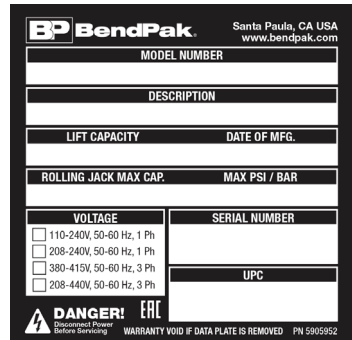
Material: Material: 2 Mil. Matte Silver Polyester (Flex-PSE)

Print using thermal transfer printer with resin ribbon

Ink: 1 Color-Black

**CE APPROVED LIFTS ONLY**

**J**



PN 5905952

**2017\_Serial\_Tag-C.jpg:**

Size: 3"W x 3"H

Material: Material: 2 Mil. Matte Silver Polyester (Flex-PSE)

Print using thermal transfer printer with resin ribbon

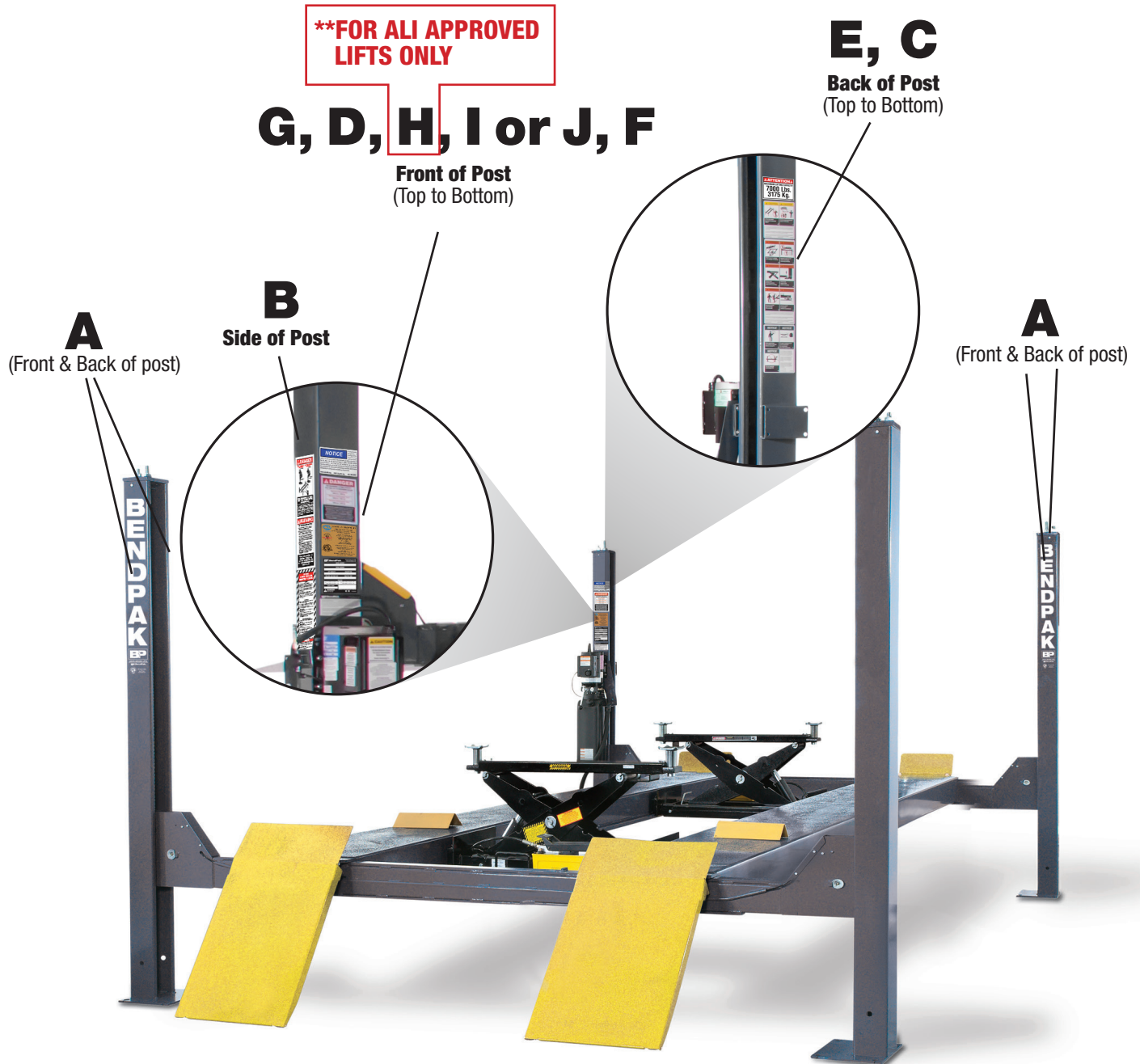
Ink: 1 Color-Black

**NON-CE APPROVED LIFTS ONLY**



# 4 Post Lifts Product Decal Positioning

**SEE NEXT PAGE FOR  
LABEL PLACEMENT HEIGHT**

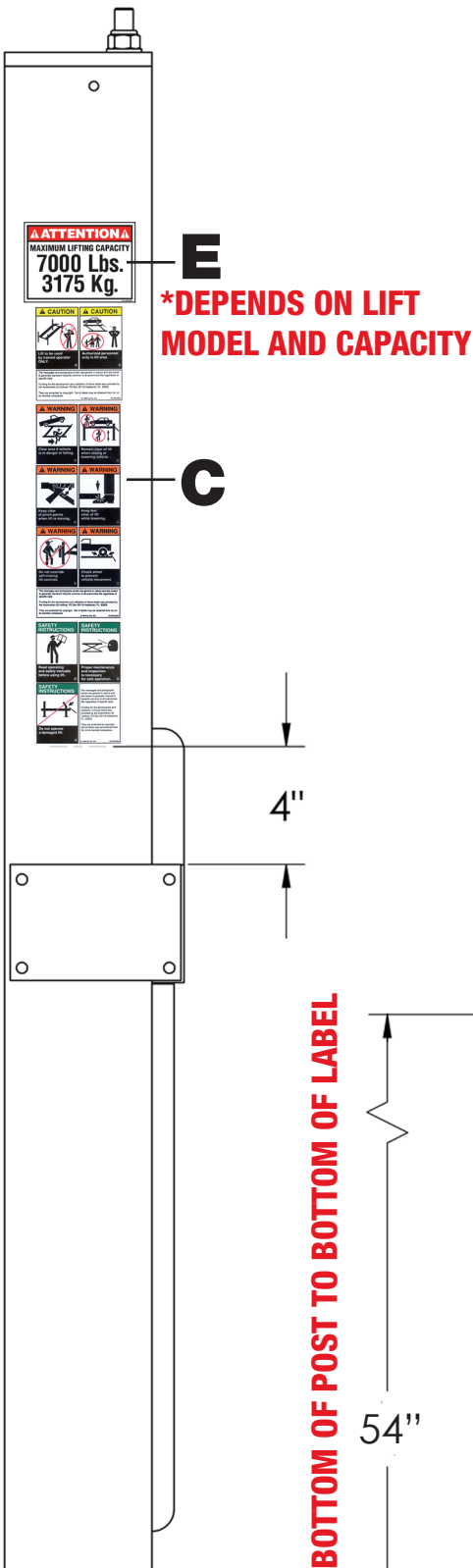




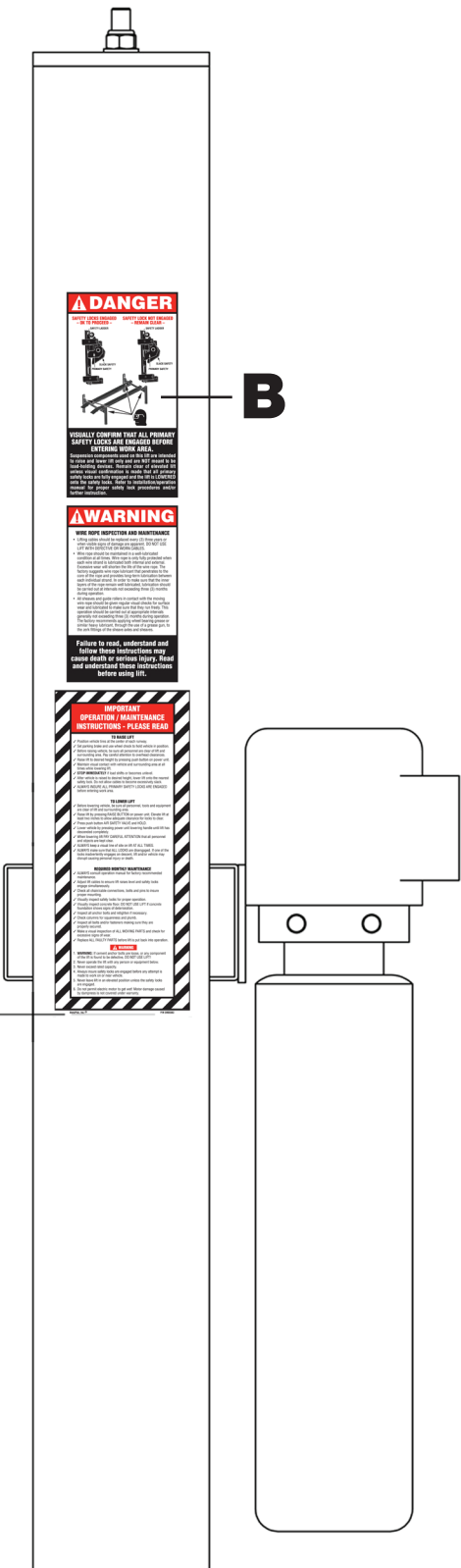
# 4 Post Lifts Product Decal Positioning

## Views of Powerside Post

**BACK OF POST**



**SIDE OF POST**



**FRONT OF POST**

