

Service Manual

SERVICE PARTS & DIAGRAMS

BENDPAK

P-9000LT

PRODUCT SKU
5175133

DRAWING N°
5260196

CATEGORY
Low-Rise Scissor Lift

REV
Version W

DATE
09.27.2022



BendPak.

This guide is a troubleshooting reference used for maintaining and servicing your Bend Pak product. It provides comprehensive information on identifying serviceable parts and components and assists in troubleshooting problems and performing assembly /disassembly procedures.

BendPak, Inc. Corporate Office
1645 Lemonwood Drive
Santa Paula, CA 93060 USA
Toll Free US/Canada: 1-800-253-2363
Fax: 1-805-933-9160
info@bendpak.com

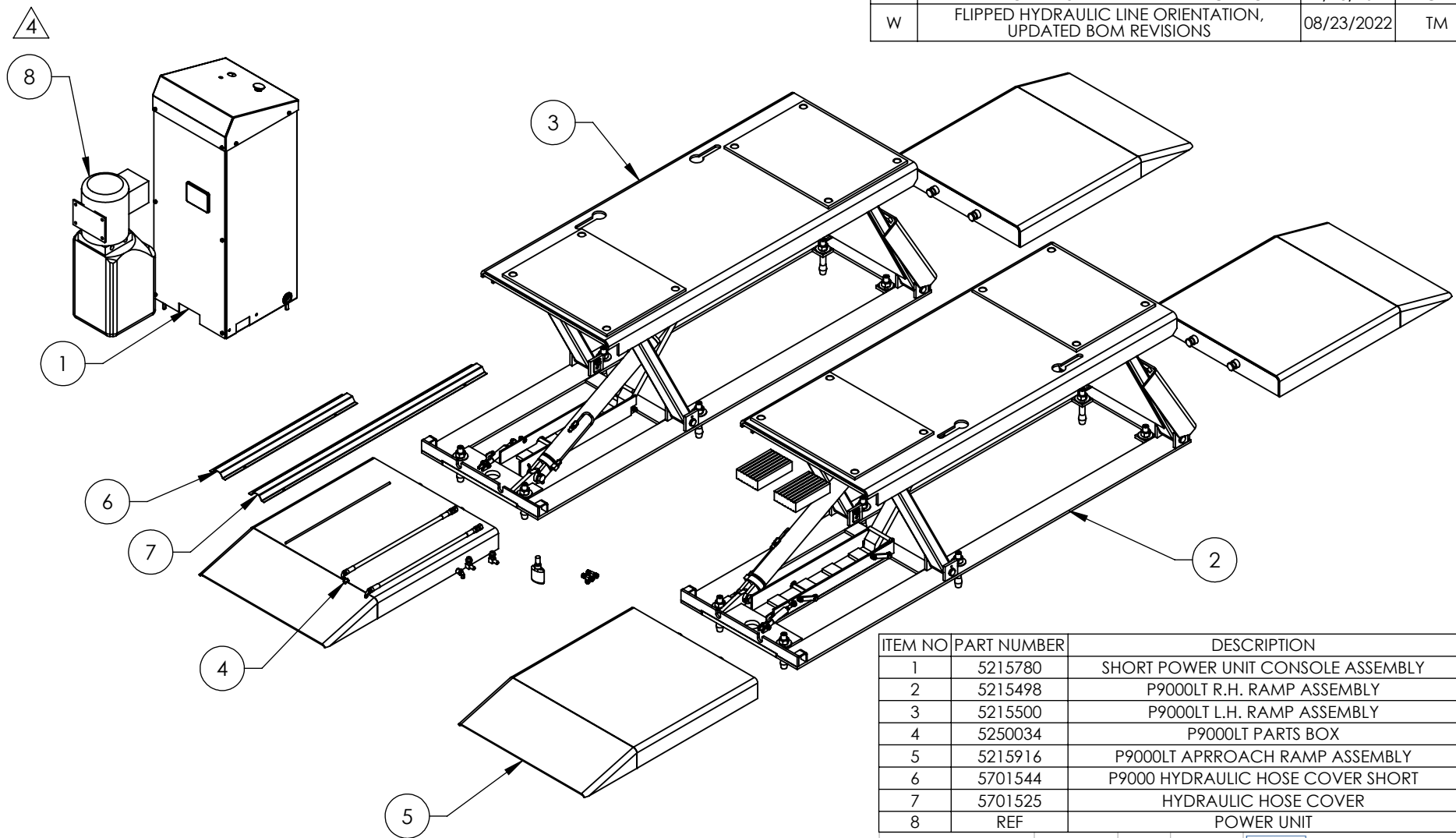
Customer Service Desk / Warranty
Customer Service Representatives
Office Tel: 1-805-933-9970
Toll Free US/Canada: 1-800-253-2363
Fax: 1-805-933-9160
customerservice@bendpak.com

Parts Orders
Customer Service Representatives
Office Tel: 1-805-933-9970
Toll Free US/Canada: 1-800-253-2363
Fax: 1-805-933-9160
parts@bendpak.com

Domestic Sales & Service
USA Sales Representatives
Office Tel: 1-805-933-9970
Toll Free US/Canada: 1-800-253-2363
Fax: 1-805-933-9160
sales@bendpak.com

International Sales & Service
Office Tel: 1-805-933-9970
Exports Dept: 1-805-933-9970 EXT. 192
Ext. Toll Free US/Canada: 1-800-253-2363
Fax: 1-805-933-9160
bpkexports@bendpak.com

REVISION				
REV	DESCRIPTION	DATE	EDITED BY	ECO#
U	REPLACED LABELS WITH COLORS & GRAPHICS NOTE, REPLACED 5940057 WITH PACKAGING INSTRUCTION NOTE, UPDATED BOM REVISION	09/21/2021	CA	01339
V	ADDED POWER UNIT AND REFERENCE NOTE	12/13/2021	CA	01368
W	FLIPPED HYDRAULIC LINE ORIENTATION, UPDATED BOM REVISIONS	08/23/2022	TM	01433



ITEM NO	PART NUMBER	DESCRIPTION	QTY	REV
1	5215780	SHORT POWER UNIT CONSOLE ASSEMBLY	1	G
2	5215498	P9000LT R.H. RAMP ASSEMBLY	1	K
3	5215500	P9000LT L.H. RAMP ASSEMBLY	1	K
4	5250034	P9000LT PARTS BOX	1	N
5	5215916	P9000LT APPROACH RAMP ASSEMBLY	4	A
6	5701544	P9000 HYDRAULIC HOSE COVER SHORT	1	A
7	5701525	HYDRAULIC HOSE COVER	1	A
8	REF	POWER UNIT	1	-

NOTE: UNLESS OTHERWISE SPECIFIED.

1. REFER TO MODEL FOR ADDITIONAL INFORMATION
2. SEE SHIPPING INSTRUCTIONS FOR FINAL PACKAGING
3. SEE COLORS & GRAPHICS FOR LABEL PLACEMENT

4. POWER UNIT REFERENCE ON PURCHASE ORDER

DO NOT SCALE DRAWING

DIMENSIONS ARE IN MM



NAME
DRAWN TS
CHECKED

DATE
01/09/2018

THIRD ANGLE PROJECTION



PROPRIETARY AND CONFIDENTIAL
THE INFORMATION CONTAINED IN THIS DRAWING IS THE SOLE PROPERTY OF BENDPAK INC. ANY REPRODUCTION IN PART OR AS A WHOLE WITHOUT THE WRITTEN PERMISSION OF BENDPAK INC. IS PROHIBITED.

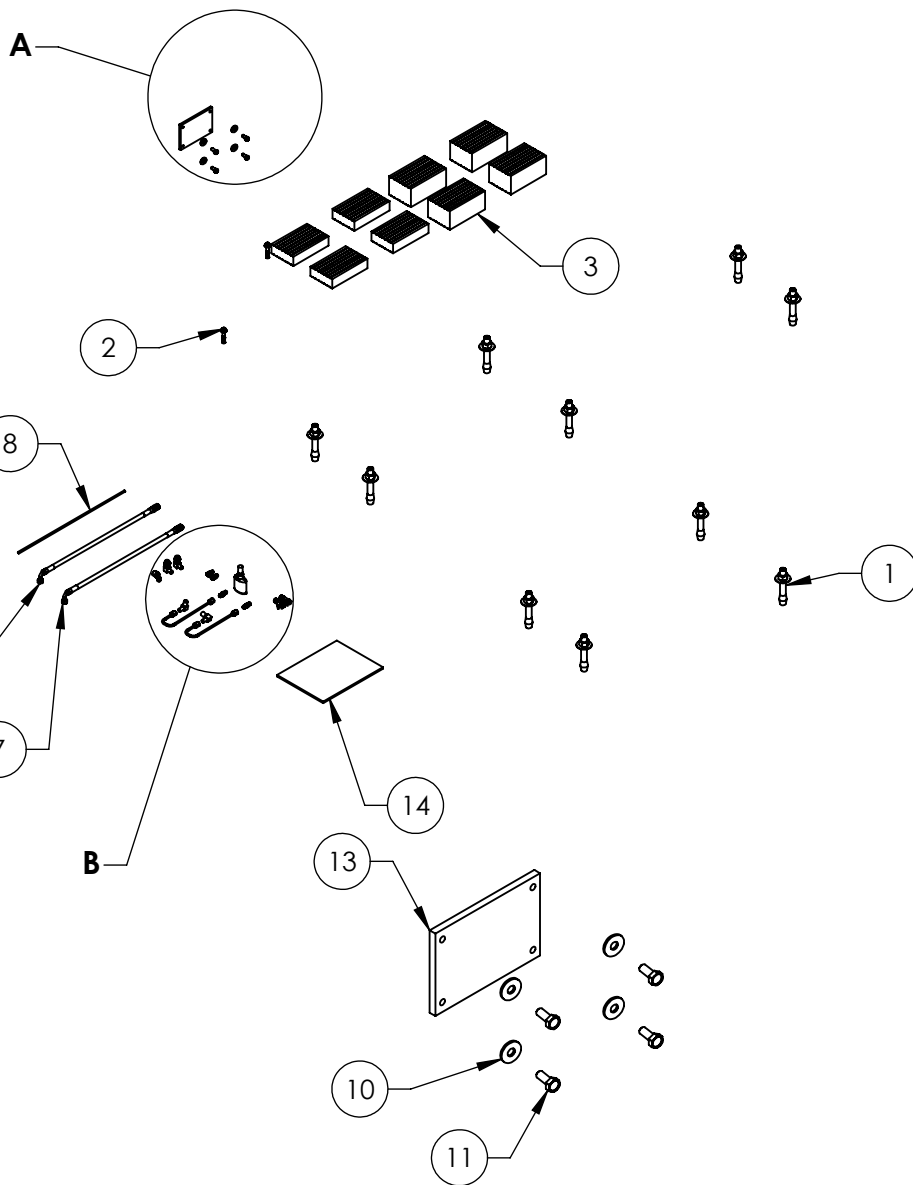
BendPak
1645 LEMONWOOD DR.
SANTA PAULA, CA 93060

TITLE:
P9000LT PRODUCTION LIFT

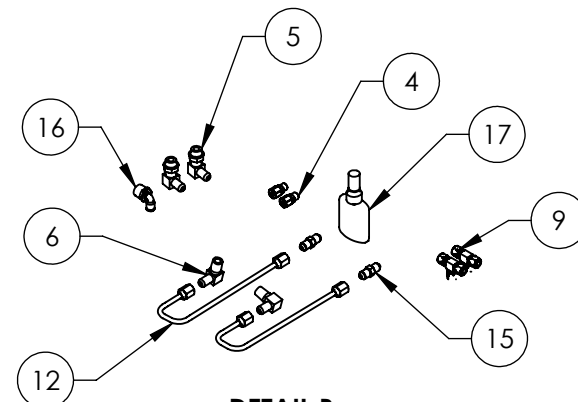
SIZE DWG. NO. REV
A 5260196 W

SCALE: 1:20

SHEET 1 OF 3



**DETAIL A
SCALE 2 : 15**



**DETAIL B
SCALE 1 : 10**

REVISION				
REV	DESCRIPTION	DATE	EDITED BY	ECO#
L	ADDED 5550089, REPLACED 5300002 WITH 5210232, REMOVED (1) 5550395	09/24/2019	TM	01128
M	ADDED 5580012, REMOVED 5590175, 5550087 AND 5550486	03/30/2020	TM	01152
N	REPLACED 5550089 WITH 5550004	09/02/2020	CA	01205

ITEM NO	PART NUMBER	DESCRIPTION	QTY	REV
1	5530456	AB 3/4" x 4 - 3/4"	12	--
2	5530326	AB Ø3/8" x 2-1/4"	2	--
3	5210232	LOW RISE SCISSOR LIFT RUBBER PAD KIT, SET OF 8	1	A
4	5550001	FTG NPL -04 COMP x -02 NPT	2	--
5	5550008	FTG ELB -04 JIC -06L ORB	2	--
6	5550086	FTG ELB -04 NPT x -04 JIC	2	--
7	5570040	P9000/SP-7XL HYDRAULIC HOSE ASSY Ø6.35 x 4270mm SB	2	D
8	5570795	1/4" POLY-FLO TUBING	5182mm	--
9	5550395	FTG TEE -04 COMP x -04 COMP x -04 COMP	2	--
10	5545340	WASHER M8 x24 FLAT	4	--
11	5530304	HHB M8 x 1.25 x 20	4	--
12	5215466	P9000 HYDRAULIC LINE ASSEMBLY	2	C
13	5715003	POWER UNIT VIBRATION DAMPENER	1	B
14	5900022	P9000LT INSTALLATION AND OPERATION MANUAL	1	--
15	5550095	FTG NPL -04 JIC x -04 JIC	2	--
16	5550004	FTG ELB 1/4 TUBE INS 3/8 NPT	1	--
17	5580012	LIQUID PTFE THREAD SEALANT 50ml	1	--

WHERE USED
P9000LT
P9000LTF

NOTE: UNLESS OTHERWISE SPECIFIED.

- REFER TO MODEL FOR ADDITIONAL INFORMATION
- SEE SHIPPING INSTRUCTIONS FOR FINAL PACKAGING

NEXT ASSEMBLY
5260196
5260197

DO NOT SCALE DRAWING

DIMENSIONS ARE IN MM



NAME	DATE
DRAWN JM	08/05/2015
CHECKED OR	09/04/2020

THIRD ANGLE PROJECTION

PROPRIETARY AND CONFIDENTIAL
THE INFORMATION CONTAINED IN THIS DRAWING IS THE SOLE PROPERTY OF BENDPAK INC. ANY REPRODUCTION IN PART OR AS A WHOLE WITHOUT THE WRITTEN PERMISSION OF BENDPAK INC. IS PROHIBITED.

BP BendPak
1645 LEMONWOOD DR. SANTA PAULA, CA 93060

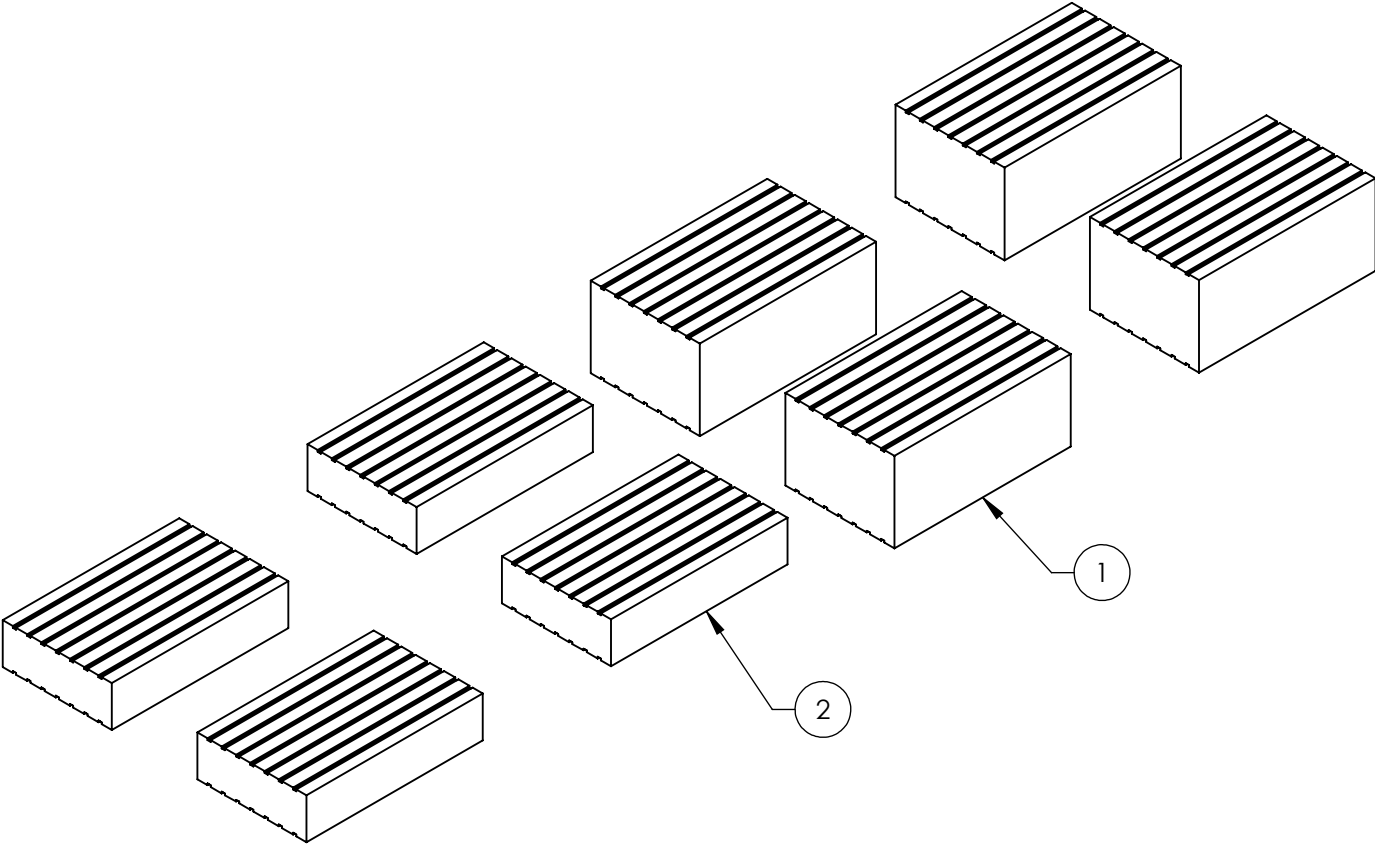
TITLE: P9000LT PARTS BOX

SIZE	DWG. NO.	REV
A	5250034	N

SCALE: 1:25

SHEET 1 OF 1

REVISION				
REV	DESCRIPTION	DATE	EDITED BY	ECO#
A	PRODUCTION RELEASE, DERIVED FROM 5210944	09/18/2019	TM	01128






WHERE USED
LR-60 SERIES
DLR-6 SERIES
MDS-6 SERIES
P9000LT SERIES
SP-7XE SERIES

NOTE: UNLESS OTHERWISE SPECIFIED.

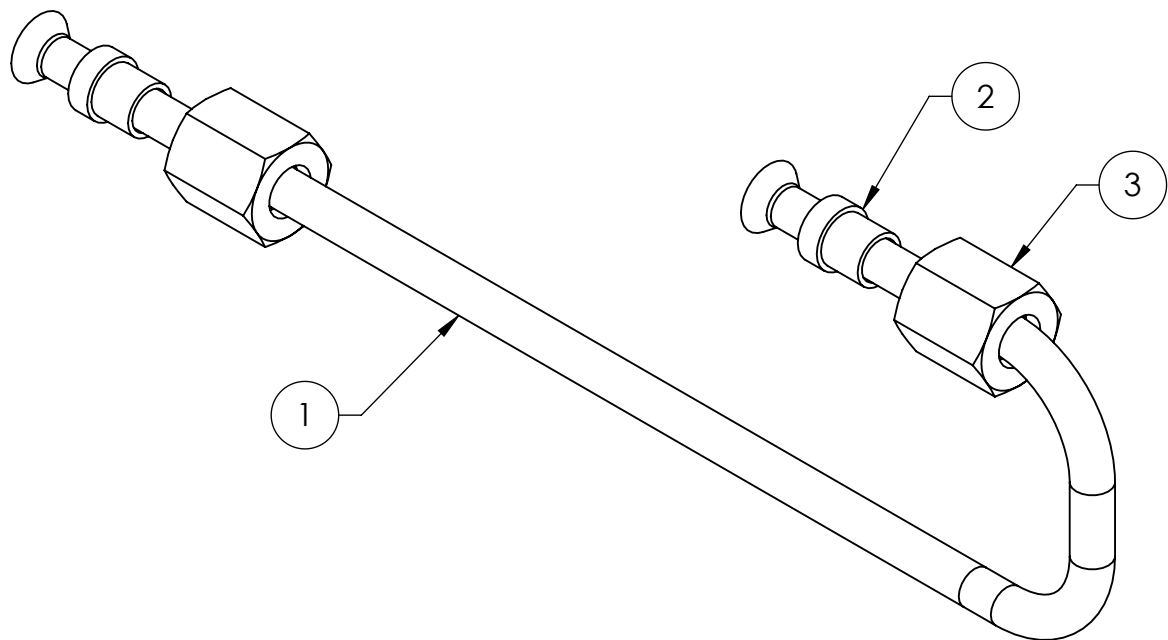
- REFER TO MODEL FOR ADDITIONAL INFORMATION
- SEE SHIPPING INSTRUCTIONS FOR FINAL PACKAGING

NEXT ASSEMBLY
ACCESSORY
5250020
5250021
5250034
5250054
5250062
5250063
5250064
5250110
5250174
5250317
5250318

ITEM NO	PART NUMBER	DESCRIPTION			QTY	REV
1	5300862	LOW RISE SCISSOR LIFT 75mm RUBBER PAD KIT, SET OF 4			1	A
2	5300861	LOW RISE SCISSOR LIFT 38mm RUBBER PAD KIT, SET OF 4			1	A

DO NOT SCALE DRAWING		NAME	DATE	 1645 LEMONWOOD DR. SANTA PAULA, CA 93060		
 DIMENSIONS ARE IN MM		DRAWN	TM 09/18/2019			
		CHECKED	CA 11/01/2019			
		THIRD ANGLE PROJECTION			TITLE: LOW RISE SCISSOR LIFT RUBBER PAD KIT, SET OF 8	
				SIZE	DWG. NO.	REV
		<p>PROPRIETARY AND CONFIDENTIAL</p> <p>THE INFORMATION CONTAINED IN THIS DRAWING IS THE SOLE PROPERTY OF BENDPAK INC. ANY REPRODUCTION IN PART OR AS A WHOLE WITHOUT THE WRITTEN PERMISSION OF BENDPAK INC. IS PROHIBITED.</p>		A	5210232	A
					SCALE: 1:5	

REVISION				
REV	DESCRIPTION	DATE	EDITED BY	ECO#
A	PRODUCTION RELEASE, DERIVED FROM 5215407	05/13/2016	TM	00761
B	UPDATED BOM REVISION	11/21/2016	TM	00781
C	UPDATED BOM REVISION	07/21/2017	TM	00852



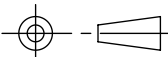


NOTE: UNLESS OTHERWISE SPECIFIED.

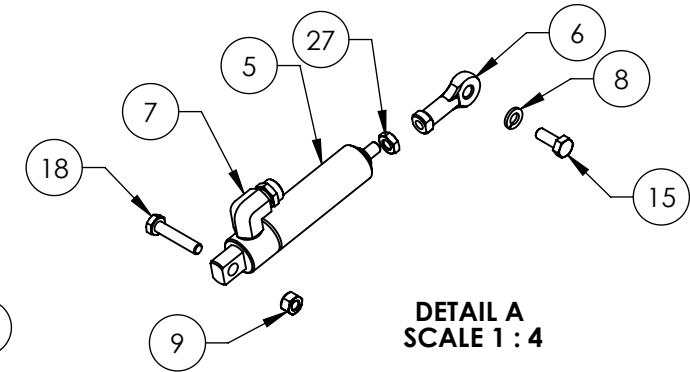
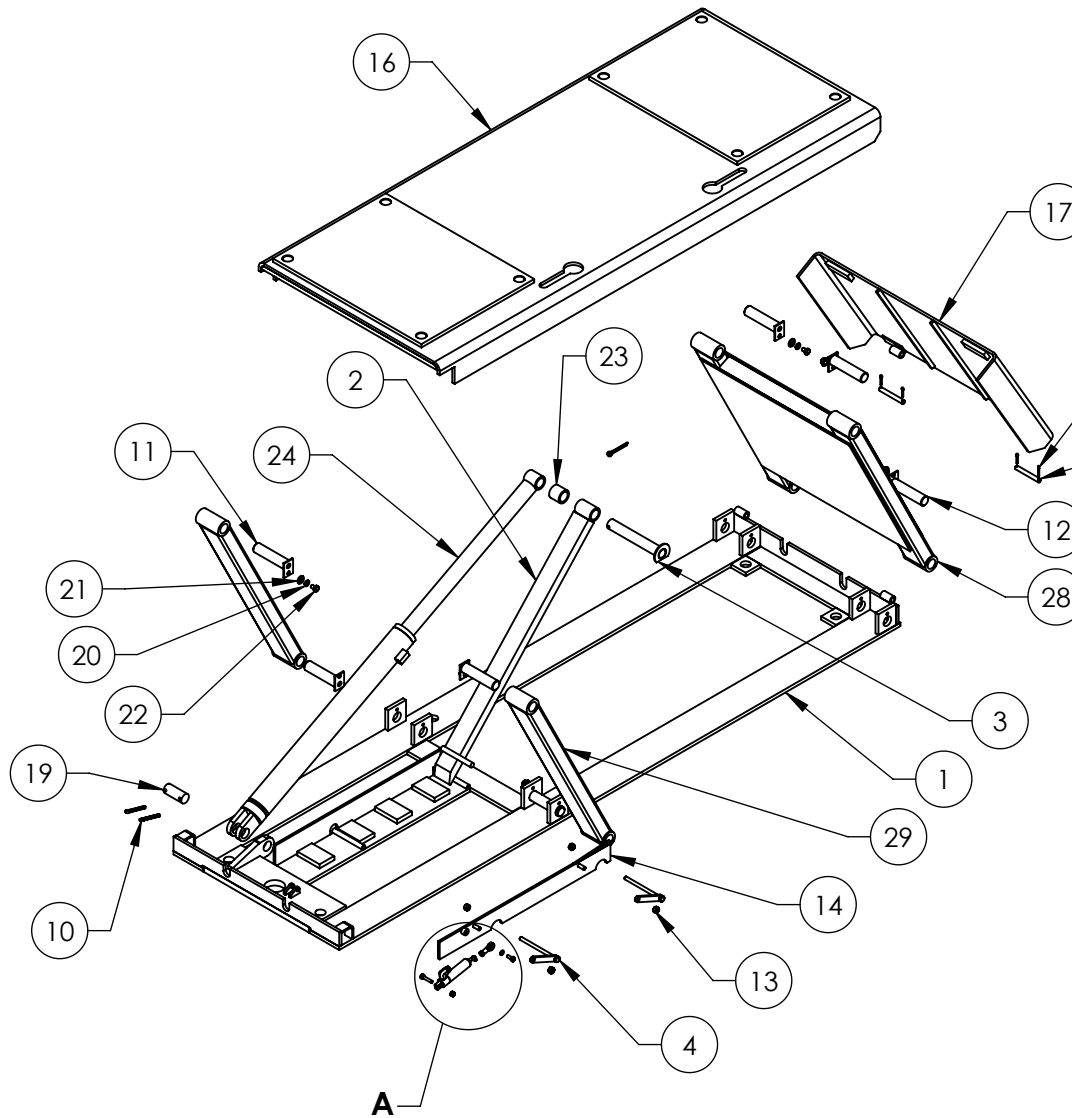
1. ASSEMBLE ITEMS AS SHOWN
2. SLIDE FLARE FITTINGS ON TO TUBE AS SHOWN BEFORE FLARING
3. FLARE TUBE USING 37° FLARING TOOL ON BOTH ENDS
4. INSERT FLARE SLEEVE INTO ENDS TO COMPLETE ASSEMBLY

NEXT ASSEMBLY
5250034

ITEM NO	PART NUMBER	DESCRIPTION		QTY	REV
1	5755154	P9000 HYDRAULIC LINE		1	C
2	5550297	FTG FS Ø6 OD TUBE		2	--
3	5550296	FTG FN Ø6 x -04 JIC F		2	--

DO NOT SCALE DRAWING		NAME	DATE	 1645 LEMONWOOD DR. SANTA PAULA, CA 93060		
DRAWN		TM	05/13/2016	TITLE: P9000 HYDRAULIC LINE ASSEMBLY		
CHECKED						
<div>DIMENSIONS ARE IN MM</div> 		THIRD ANGLE PROJECTION		SIZE DWG. NO.		REV
				A 5215466		C
		<div>PROPRIETARY AND CONFIDENTIAL</div> <div>THE INFORMATION CONTAINED IN THIS DRAWING IS THE SOLE PROPERTY OF BENDPAK INC. ANY REPRODUCTION IN PART OR AS A WHOLE WITHOUT THE WRITTEN PERMISSION OF BENDPAK INC. IS PROHIBITED.</div>		SCALE: 1:1		SHEET 1 OF 1

REVISION				
REV	DESCRIPTION	DATE	EDITED BY	ECO#
H	UPDATED BOM REVISION	04/21/2020	CA	01161
J	REMOVED 5550025, UPDATED BOM REVISION	07/16/2021	CA	01317
K	UPDATED BOM REVISION	08/23/2022	TM	01433



ITEM NO	PART NUMBER	DESCRIPTION	QTY	REV
1	5601220	P9000LT R.H. BASE WELDMENT	1	B
2	5600886	P-9000/P-9000F R.H. SAFETY BAR WELDMENT	1	C
3	5600969	P-9000/P-9000F UPPER HINGE PIN WELDMENT	1	A
4	5601194	P9000 SAFETY BAR PIVOT ARM WELDMENT	2	B
5	5502195	AIR CYLINDER, Ø19mm x 25 STROKE	1	--
6	5505625	FEMALE ROD END M6 x 33	1	--
7	5550087	FTG ELB -04 COMP x -02 NPT	1	--
8	5545026	WASHER M6 x Ø12 SL	1	--
9	5535357	NUT M6 x 1.0 NL	1	--
10	5505400	COTTER PIN Ø6 x 50mm	3	--
11	5601221	P9000 LT SERIES RAMP HINGE ARM PIVOT PIN WELDMENT	4	A
12	5601244	P9000 LT SERIES BASE HINGE ARM PIVOT PIN WELDMENT	4	A
13	5535001	NUT M8 x 1.25 NL	4	--
14	5601052	P9000 SAFETY LOCKOUT BAR WELDMENT, RH	1	D
15	5530019	HHB M6 x 1 x 16mm	1	--
16	5215499	P9000LT R.H. TOP DECK ASSEMBLY	1	C
17	5601222	P-9000LT HINGED RAMP WELDMENT	1	B
18	5530047	HHB, M6 x 1 x 30mm	1	--
19	5746178	P-9000/P-9000F CLEVIS PIN	1	B
20	5545202	WASHER M8 x Ø15 SL	8	--
21	5545341	WASHER M10 x Ø20 FLAT	8	--
22	5530025	HHB M8 x 1.25 x 12mm	8	--
23	5756035	P-9000/P-9000F SAFETY BAR SPACER	1	A
24	5502030	CYLINDER ASSEMBLY Ø2.0 x 17.75	1	H
25	5746425	P9000 HINGED RAMP PIN	2	A
26	5505006	COTTER PIN Ø3.2 x 20mm	4	--
27	5535230	NUT 1/4-28 JN	1	--
28	5620613	P9000LT SERIES ASYMMETRIC HINGE DOUBLE ARM WELDMENT	1	A
29	5620612	P9000LT SERIES ASYMMETRIC HINGE ARM WELDMENT	2	A

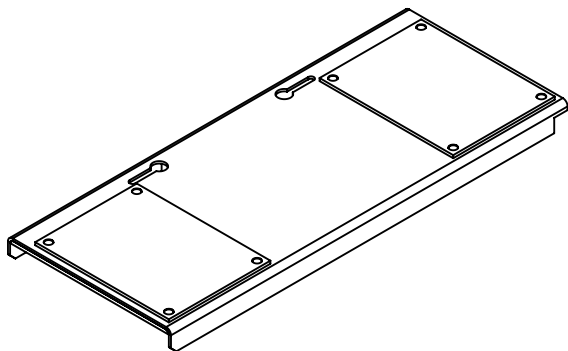
WHERE USED
P9000LT SERIES

NOTE: UNLESS OTHERWISE SPECIFIED.

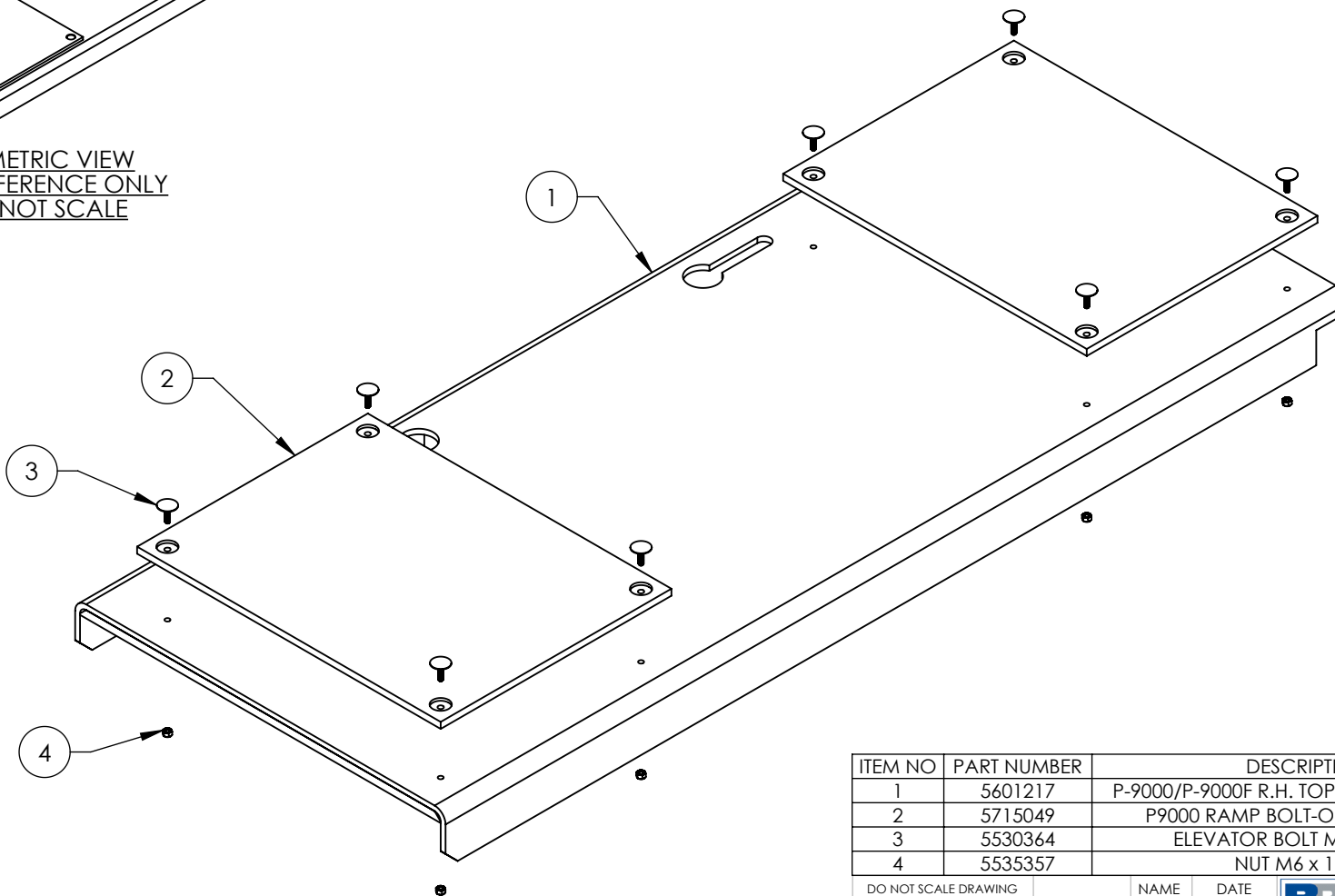
- REFER TO MODEL FOR ADDITIONAL INFORMATION
- ASSEMBLE ITEMS AS SHOWN

NEXT ASSEMBLY
5260196
5260197

DO NOT SCALE DRAWING		NAME	DATE	 1645 LEMONWOOD DR. SANTA PAULA, CA 93060
DRAWN		TS	01/09/2018	
CHECKED		OR	08/25/2022	
DIMENSIONS ARE IN MM		THIRD ANGLE PROJECTION		TITLE:
 <small>PROPRIETARY AND CONFIDENTIAL THE INFORMATION CONTAINED IN THIS DRAWING IS THE SOLE PROPERTY OF BENDPAK INC. ANY REPRODUCTION IN PART OR AS A WHOLE WITHOUT THE WRITTEN PERMISSION OF BENDPAK INC. IS PROHIBITED.</small>				P9000LT R.H. RAMP ASSEMBLY
		SIZE	DWG. NO.	REV
A		5215498	K	
SCALE: 1:18				SHEET 1 OF 1



ISOMETRIC VIEW
FOR REFERENCE ONLY
DO NOT SCALE



REVISION				
REV	DESCRIPTION	DATE	EDITED BY	ECO#
A	PRODUCTION RELEASE, DERIVED FROM 5215431	01/08/2018	TS	00903
B	REPLACED 5715021 WITH 5715035, ADDED 5530366, UPDATED BOM REVISION	09/26/2019	TM	01128
C	REPLACED 5715035 WITH 5715049, 5530366 WITH 5530364, ADDED 5535357, UPDATED BOM REV	07/29/2022	TM	01433

WHERE USED
P9000LT
P9000LTF

NOTE: UNLESS OTHERWISE SPECIFIED.

1. REFER TO MODEL FOR ADDITIONAL INFORMATION
2. SEE COLORS & GRAPHICS FOR LABEL PLACEMENT
3. SEE SHIPPING INSTRUCTIONS FOR FINAL PACKAGING
4. ASSEMBLE ITEMS AS SHOWN

NEXT ASSEMBLY
5215498

ITEM NO	PART NUMBER	DESCRIPTION	QTY	REV
1	5601217	P-9000/P-9000F R.H. TOP DECK WELDMENT	1	C
2	5715049	P9000 RAMP BOLT-ON RUBBER PAD	2	A
3	5530364	ELEVATOR BOLT M6 x 1.0 x 25	8	A
4	5535357	NUT M6 x 1.0 NL	8	B

DO NOT SCALE DRAWING

DIMENSIONS ARE IN MM



NAME	DATE
DRAWN TS	01/08/2018
CHECKED OR	08/26/2022

THIRD ANGLE PROJECTION



PROPRIETARY AND CONFIDENTIAL
THE INFORMATION CONTAINED IN THIS DRAWING IS THE SOLE PROPERTY OF BENDPAK INC. ANY REPRODUCTION IN PART OR AS A WHOLE WITHOUT THE WRITTEN PERMISSION OF BENDPAK INC. IS PROHIBITED.

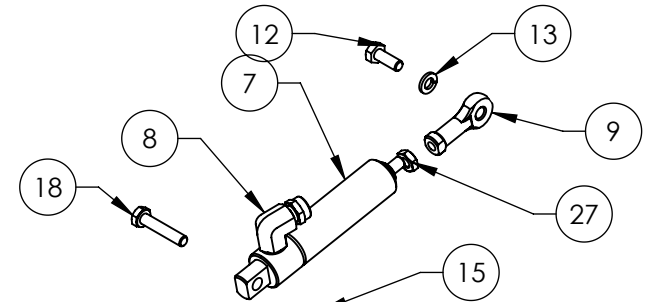
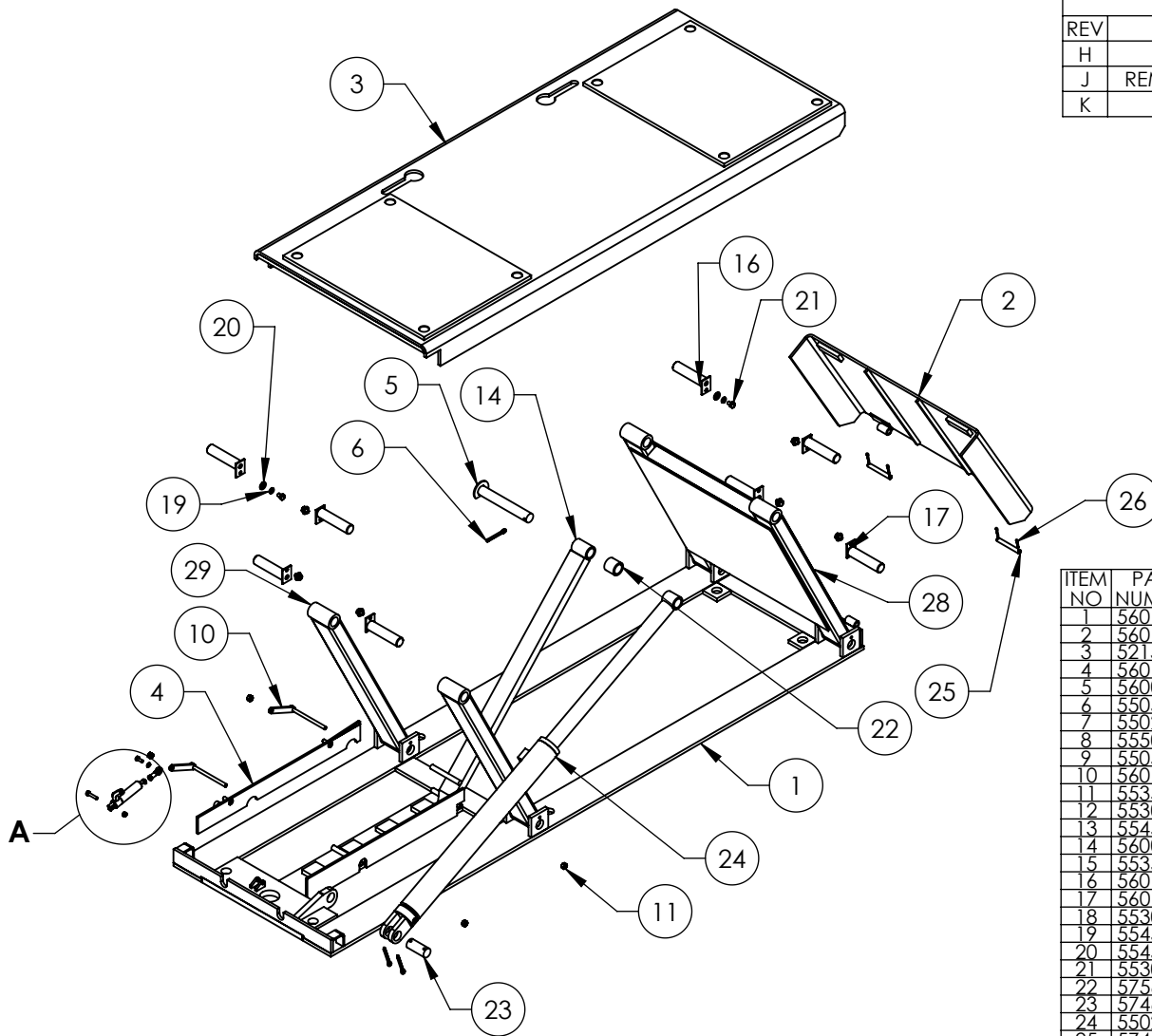


TITLE: P9000LT R.H. TOP DECK ASSEMBLY

SIZE DWG. NO. REV
A 5215499 C

SCALE: 1:8

SHEET 1 OF 1



DETAIL A
SCALE 1 : 4

REVISION				
REV	DESCRIPTION	DATE	EDITED BY	ECO#
H	UPDATED BOM REVISION	04/21/2020	CA	01161
J	REMOVED 5550025, UPDATED BOM REVISION	07/16/2021	CA	01317
K	UPDATED BOM REVISIONS	08/23/2022	TM	01433

ITEM NO	PART NUMBER	DESCRIPTION	QTY	REV
1	5601219	P9000LT L.H. BASE WELDMENT	1	B
2	5601222	P-9000LT HINGED RAMP WELDMENT	1	B
3	5215745	P9000LT L.H. TOP DECK ASSEMBLY	1	C
4	5601051	P9000 SAFETY LOCKOUT BAR WELDMENT, LH	1	D
5	5600969	P-9000/P-9000F UPPER HINGE PIN WELDMENT	1	A
6	5505400	COTTER PIN Ø6 x 50mm	3	--
7	5502195	AIR CYLINDER, Ø19mm x 25 STROKE	1	--
8	5550087	FTG ELB -04 COMP x -02 NPT	1	--
9	5505625	FEMALE ROD END M6 x 33	1	--
10	5601194	P9000 SAFETY BAR PIVOT ARM WELDMENT	2	B
11	5535001	NUT M8 x 1.25 NL	4	--
12	5530019	HHB M6 x 1 x 16mm	1	--
13	5545026	WASHER M6 x Ø12 SL	1	--
14	5600887	P-9000/P9000F L.H. SAFETY BAR WELDMENT	1	C
15	5535357	NUT M6 x 1.0 NL	1	--
16	5601221	P9000 LT SERIES RAMP HINGE ARM PIVOT PIN WELDMENT	4	A
17	5601244	P9000 LT SERIES BASE HINGE ARM PIVOT PIN WELDMENT	4	A
18	5530047	HHB, M6 x 1 x 30mm	1	--
19	5545202	WASHER M8 x Ø15 SL	8	--
20	5545341	WASHER M10 x Ø20 FLAT	8	--
21	5530025	HHB M8 x 1.25 x 12mm	8	--
22	5756035	P-9000/P-9000F SAFETY BAR SPACER	1	A
23	5746178	P-9000/P-9000F CLEVIS PIN	1	B
24	5502030	CYLINDER ASSEMBLY Ø2.0 x 17.75	1	H
25	5746425	P9000 HINGED RAMP PIN	2	A
26	5505006	COTTER PIN Ø3.2 x 20mm	4	--
27	5535230	NUT 1/4-28 IN	1	--
28	5620613	P9000LT SERIES ASYMMETRIC HINGE DOUBLE ARM WELDMENT	1	A
29	5620612	P9000LT SERIES ASYMMETRIC HINGE ARM WELDMENT	2	A

WHERE USED
P9000LT
P9000LTF

NOTE: UNLESS OTHERWISE SPECIFIED.

- REFER TO MODEL FOR ADDITIONAL INFORMATION
- ASSEMBLE ITEMS AS SHOWN

NEXT ASSEMBLY
5260196
5260197

DO NOT SCALE DRAWING

DIMENSIONS ARE IN MM



NAME	DATE
DRAWN TS	01/09/2018
CHECKED OR	08/26/2022

THIRD ANGLE PROJECTION



PROPRIETARY AND CONFIDENTIAL
THE INFORMATION CONTAINED IN THIS DRAWING IS THE SOLE PROPERTY OF BENDPAK INC. ANY REPRODUCTION IN PART OR AS A WHOLE WITHOUT THE WRITTEN PERMISSION OF BENDPAK INC. IS PROHIBITED.

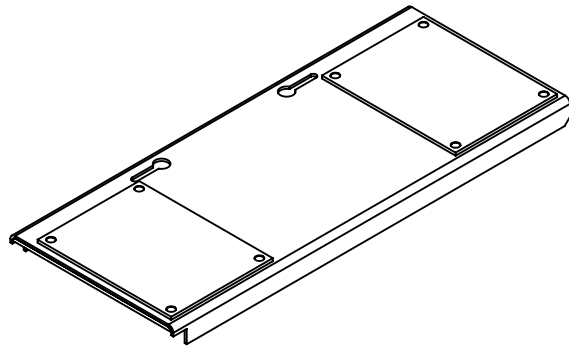
BendPak®	
1645 LEMONWOOD DR. SANTA PAULA, CA 93060	

TITLE: P9000LT L.H. RAMP ASSEMBLY

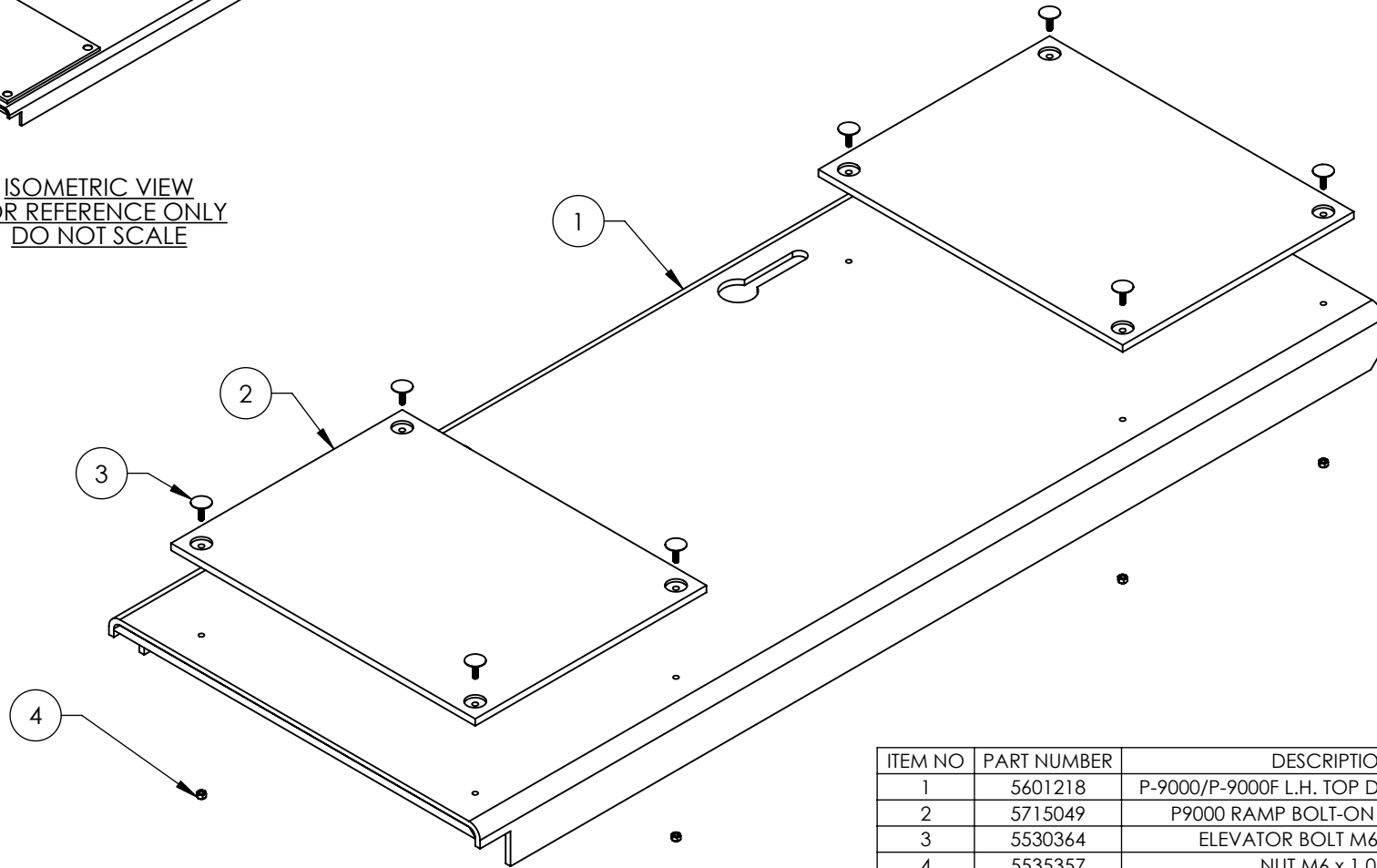
SIZE	DWG. NO.	REV
A	5215500	K

SCALE: 1:18

SHEET 1 OF 1



ISOMETRIC VIEW
FOR REFERENCE ONLY
DO NOT SCALE



WHERE USED
P9000LT
P9000LTF

NOTE: UNLESS OTHERWISE SPECIFIED.

1. REFER TO MODEL FOR ADDITIONAL INFORMATION
2. SEE COLORS & GRAPHICS FOR LABEL PLACEMENT
3. SEE SHIPPING INSTRUCTIONS FOR FINAL PACKAGING
4. ASSEMBLE ITEMS AS SHOWN

NEXT ASSEMBLY
5215500

REVISION				
REV	DESCRIPTION	DATE	EDITED BY	ECO#
A	PRODUCTION RELEASE, DERIVED FROM 5215430	01/08/2018	TS	00903
B	ADDED 5530366, REPLACED 5715021 WITH 5715035, REMOVED GLUE NOTE, UPDATED BOM REVISION	09/30/2019	TM	01128
C	REPLACED 5715035 WITH 5715049, 5530366 WITH 5530364, ADDED 5535357, UPDATED BOM REVISION	07/29/2022	TM	01433

ITEM NO	PART NUMBER	DESCRIPTION	QTY	REV
1	5601218	P-9000/P-9000F L.H. TOP DECK WELDMENT	1	C
2	5715049	P9000 RAMP BOLT-ON RUBBER PAD	2	A
3	5530364	ELEVATOR BOLT M6 x 1.0 x 25	8	--
4	5535357	NUT M6 x 1.0 NL	8	--

DO NOT SCALE DRAWING

DIMENSIONS ARE IN MM



NAME	DATE
DRAWN TS	01/08/2018
CHECKED OR	08/26/2022

THIRD ANGLE PROJECTION



PROPRIETARY AND CONFIDENTIAL
THE INFORMATION CONTAINED IN THIS DRAWING IS
THE SOLE PROPERTY OF BENDPAK INC. ANY
REPRODUCTION IN PART OR AS A WHOLE WITHOUT
THE WRITTEN PERMISSION OF BENDPAK INC. IS
PROHIBITED.



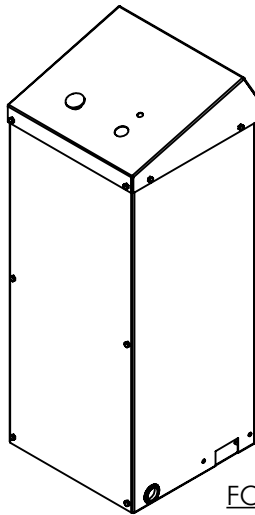
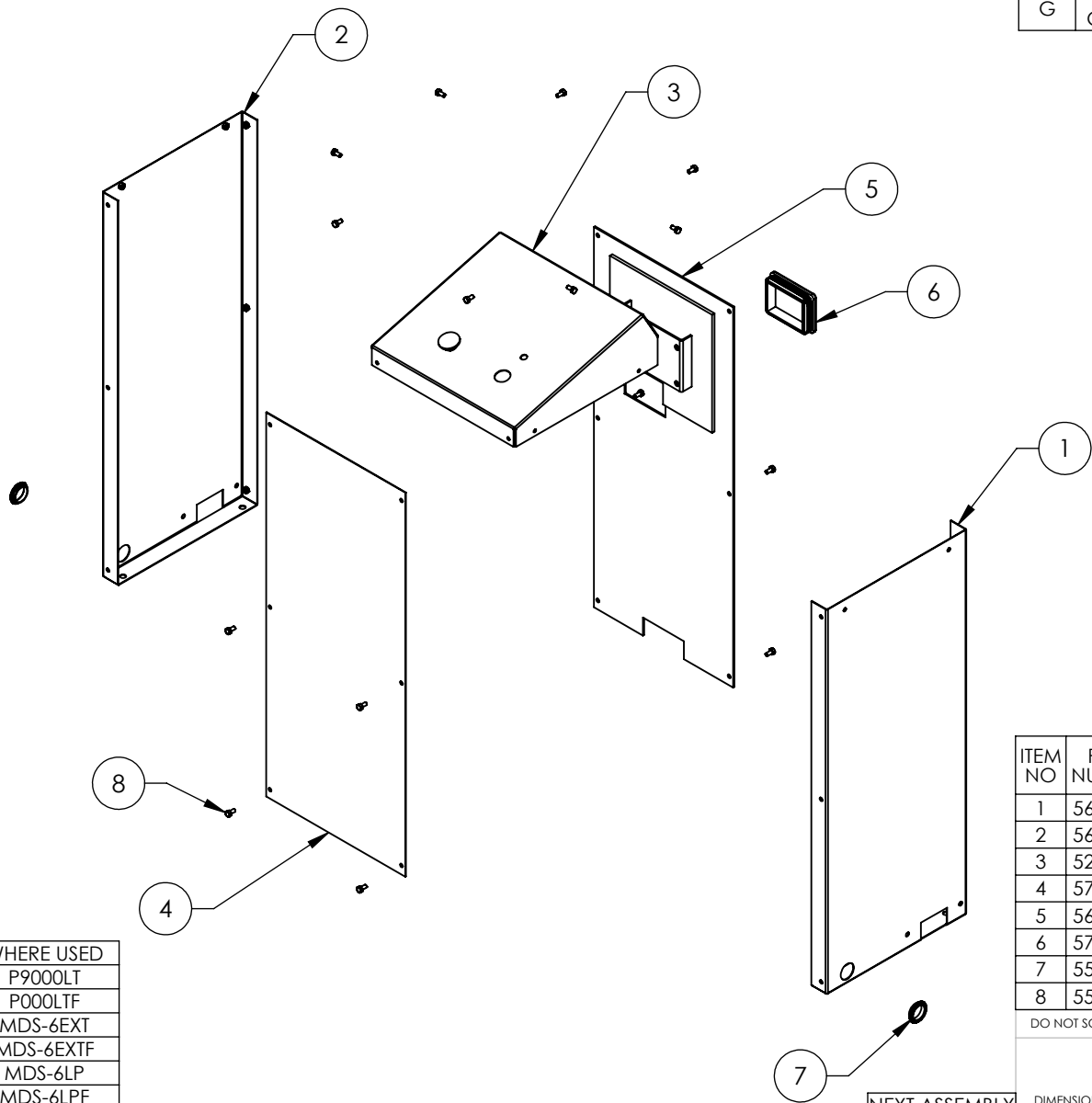
TITLE: P9000LT L.H. TOP DECK
ASSEMBLY

SIZE	DWG. NO.	REV
A	5215745	C

SCALE: 1:8

SHEET 1 OF 1

REVISION				
REV	DESCRIPTION	DATE	EDITED BY	ECO#
E	ADDED 5905138	01/18/2021	CA	01212
F	ADDED 5905775	08/18/2021	TM	01327
G	REPLACED LABELS WITH COLORS & GRAPHICS NOTE, UPDATED BOM REVISION	09/21/2021	CA	01339



ISOMETRIC VIEW
FOR REFERENCE ONLY
DO NOT SCALE

WHERE USED
P9000LT
P000LTF
MDS-6EXT
MDS-6EXTF
MDS-6LP
MDS-6LPF

NOTE: UNLESS OTHERWISE SPECIFIED.

1. REFER TO MODEL FOR ADDITIONAL INFORMATION
2. SEE SHIPPING INSTRUCTIONS FOR FINAL PACKAGING
3. SEE COLORS & GRAPHICS FOR LABEL PLACEMENT

ITEM NO	PART NUMBER	DESCRIPTION	QTY	REV
1	5601259	SHORT POWER UNIT CONSOLE WELDMENT, R.H.	1	A
2	5601260	SHORT POWER UNIT CONSOLE WELDMENT, L.H.	1	A
3	5215857	3-BUTTON 110/220V CONSOLE TOP	1	C
4	5737071	SHORT POWER UNIT CONSOLE DOOR	1	A
5	5601261	SHORT POWER UNIT CONSOLE DOOR WELDMENT, REAR	1	A
6	5715196	D2/XPR POLYETHYLENE COVER BLOCK 105 x 80	1	D
7	5520329	GROMMET GRO-1.25-UL CAPPLUGS	2	-
8	5530031	HHB M6 x 1.0 x 12mm	16	-

DO NOT SCALE DRAWING

NAME	DATE
DRAWN TM	05/01/2018
CHECKED OR	09/24/2021

DIMENSIONS ARE IN MM



PROPRIETARY AND CONFIDENTIAL
THE INFORMATION CONTAINED IN THIS DRAWING IS THE SOLE PROPERTY OF BENDPAK INC. ANY REPRODUCTION IN PART OR AS A WHOLE WITHOUT THE WRITTEN PERMISSION OF BENDPAK INC. IS PROHIBITED.



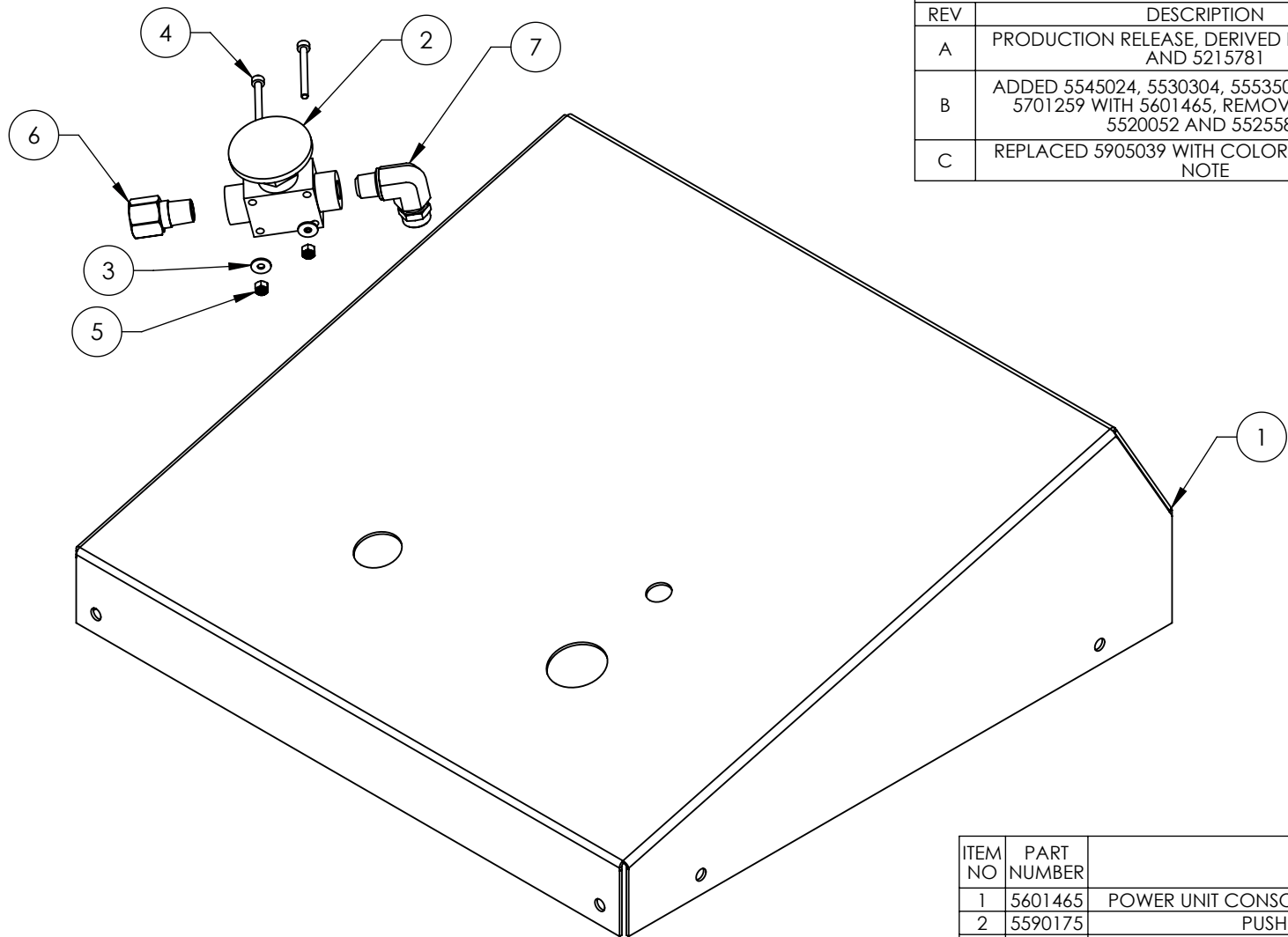
1645 LEMONWOOD DR.
SANTA PAULA, CA 93060

TITLE: SHORT POWER UNIT CONSOLE ASSEMBLY

SIZE DWG. NO. 5215780 REV G

SCALE: 1:12 SHEET 1 OF 1

NEXT ASSEMBLY
5260196
5260197
5260673
5260674
5260675
5260676



REVISION				
REV	DESCRIPTION	DATE	EDITED BY	ECO#
A	PRODUCTION RELEASE, DERIVED FROM 5215780 AND 5215781	06/24/2019	TM	01096
B	ADDED 5545024, 5530304, 55535001, REPLACED 5701259 WITH 5601465, REMOVED 5525102, 5520052 AND 5525586	03/31/2020	TM	01152
C	REPLACED 5905039 WITH COLORS & GRAPHICS NOTE	09/30/2021	CA	01350

WHERE USED
XR-12AE
SP-7XE SERIES
P9000LT SERIES
MDS-6 SERIES

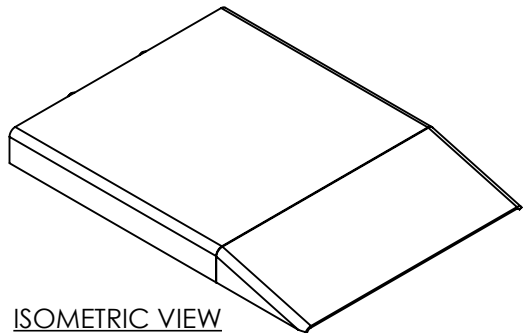
NOTE: UNLESS OTHERWISE SPECIFIED.

1. REFER TO MODEL FOR ADDITIONAL INFORMATION
2. ASSEMBLE ITEMS AS SHOWN
3. SEE SHIPPING INSTRUCTIONS FOR FINAL PACKAGING
4. SEE COLORS & GRAPHICS FOR LABEL PLACEMENT

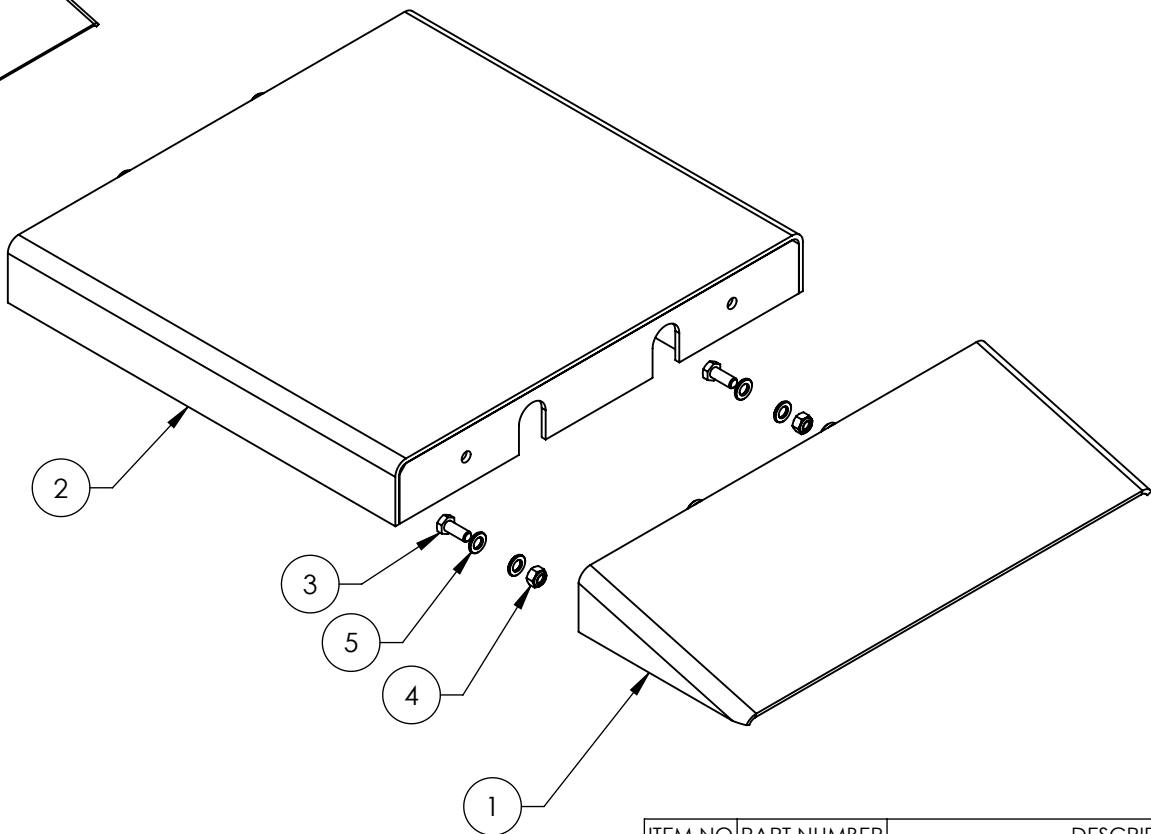
ITEM NO	PART NUMBER	DESCRIPTION	QTY	REV
1	5601465	POWER UNIT CONSOLE COVER WELDMENT (3 BUTTON)	1	A
2	5590175	PUSH BUTTON AIR VALVE	1	--
3	5545024	WASHER, M3 x 9mm FLAT	2	--
4	5530043	SHCS M3 x 0.5 x 30	2	--
5	5535020	NUT M3 x 0.5, NL CL8	2	--
6	5550486	FTG NPL -02 NPT x -04 F NPT	1	--
7	5550087	FTG ELB -04 COMP x -02 NPT	1	--

DO NOT SCALE DRAWING		NAME	DATE	 1645 LEMONWOOD DR. SANTA PAULA, CA 93060
DRAWN		TM	06/24/2019	
CHECKED		OR	10/07/2021	
DIMENSIONS ARE IN MM		THIRD ANGLE PROJECTION		TITLE:
		<small>PROPRIETARY AND CONFIDENTIAL</small> <small>THE INFORMATION CONTAINED IN THIS DRAWING IS THE SOLE PROPERTY OF BENDPAK INC. ANY REPRODUCTION IN PART OR AS A WHOLE WITHOUT THE WRITTEN PERMISSION OF BENDPAK INC. IS PROHIBITED.</small>		3-BUTTON 110/220V CONSOLE TOP
				SIZE DWG. NO. REV
NEXT ASSEMBLY		A		5215857 C
5215780		SCALE: 1:3		SHEET 1 OF 1
5215781				

REVISION				
REV	DESCRIPTION	DATE	EDITED BY	ECO#
A	PRODUCTION RELEASE	04/17/2020	CA	01161



ISOMETRIC VIEW
FOR REFERENCE ONLY
DO NOT SCALE






ITEM NO	PART NUMBER	DESCRIPTION	QTY	REV
1	5601472	P9000 SHORT APPROACH RAMP WELDMENT	1	A
2	5601473	P9000 APPROACH RAMP EXTENSION WELDMENT	1	A
3	5530563	HHB M12 x 1.75 x 30 CL10.9	2	-
4	5535041	NUT M12 x 1.75 NL CL10.9	2	-
5	5545347	WASHER, M12 FLAT WASHER	4	-

WHERE USED
P9000LT

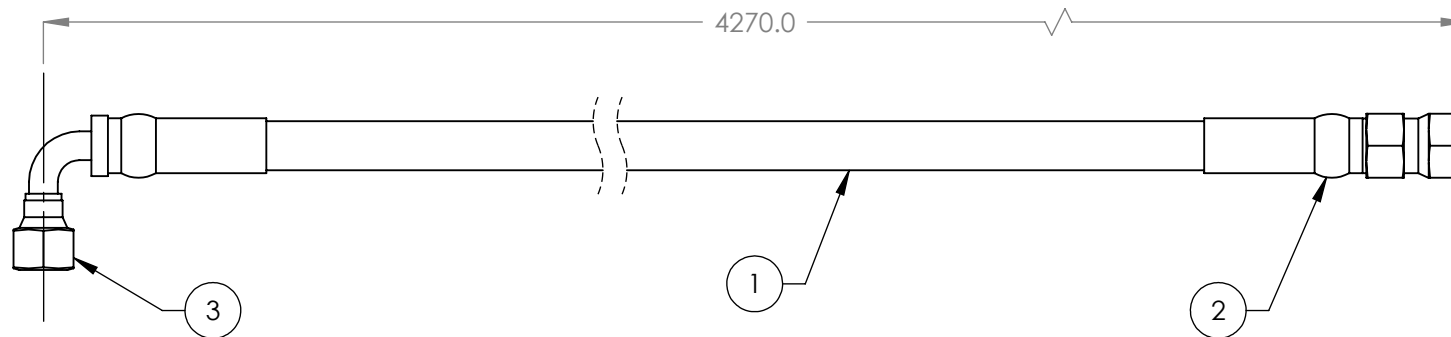
NOTE: UNLESS OTHERWISE SPECIFIED.

1. SEE SHIPPING INSTRUCTIONS FOR FINAL PACKAGING

NEXT ASSEMBLY
5260196

DO NOT SCALE DRAWING		NAME	DATE	<div> BendPak®</div> <div>1645 LEMONWOOD DR. SANTA PAULA, CA 93060</div>		
DIMENSIONS ARE IN MM		DRAWN	CC	01/21/2020		
		CHECKED	OR	04/23/2020		
		THIRD ANGLE PROJECTION		TITLE: P9000LT APPROACH RAMP ASSEMBLY		
				SIZE	DWG. NO.	REV
				A	5215916	A
				SCALE: 1:8		SHEET 1 OF 2
		PROPRIETARY AND CONFIDENTIAL THE INFORMATION CONTAINED IN THIS DRAWING IS THE SOLE PROPERTY OF BENDPAK INC. ANY REPRODUCTION IN PART OR AS A WHOLE WITHOUT THE WRITTEN PERMISSION OF BENDPAK INC. IS PROHIBITED.				

REVISION				
REV	DESCRIPTION	DATE	EDITED BY	ECO#
B	UPDATED NEXT ASSEMBLY UPDATED TITLE TO REFLECT NEXT ASSEMBLY	12/12/2008	AC	00256
OBSO	REPLACED WITH 5570871	07/28/2009	AC	00249
C	UNOBSOLETE FOR USE IN PRODUCTION, REPLACED 5570110 WITH 5570129, UPDATED TITLE AND NEXT ASSEMBLY TO REFLECT WHERE USED	06/29/2017	TM	00847
D	UPDATED TITLE TO REFLECT WHERE USED, UPDATED NEXT ASSEMBLY	05/08/2018	TM	00903





WHERE USED
P9000LT SERIES
SP-7XE SERIES

NOTE: UNLESS OTHERWISE SPECIFIED.

- FOR ITEM 1 SPECIFICATIONS REFER TO PART SPECIFICATION FORM
- (*)ITEM 1 QTY FOR REFERENCE ONLY

ITEM NO	PART NUMBER	DESCRIPTION	QTY	REV
1	5570129	Ø6.4 ID HYDRAULIC HOSE	421 6mm*	-
2	5550325	FTG NPL Ø1/4 CRIMP x -04 JIC	1	-
3	5550345	FTG ELB Ø1/4 CRIMP x -04 JIC	1	-

DO NOT SCALE DRAWING		NAME	DATE	<div></div> <div>1645 LEMONWOOD DR. SANTA PAULA, CA 93060</div>		
DIMENSIONS ARE IN MM TOLERANCES: <div>0. = ±1.5 0.0 = ±1.0 0.00 = ±0.25 0.000 = ±0.13</div>		DRAWN	AC			01/11/2008
		CHECKED	CA			05/23/2018
SURFACE FINISH 1.6 ISO Ra µm FOR MACHINED SURFACES UNLESS OTHERWISE SPECIFIED		THIRD ANGLE PROJECTION			TITLE:	
					HYDRAULIC HOSE ASSEMBLY Ø6.35 x 4270mm SB	
		<div>PROPRIETARY AND CONFIDENTIAL</div> <div>THE INFORMATION CONTAINED IN THIS DRAWING IS THE SOLE PROPERTY OF BENDPAK INC. ANY REPRODUCTION IN PART OR AS A WHOLE WITHOUT THE WRITTEN PERMISSION OF BENDPAK INC. IS PROHIBITED.</div>				
Y	SIZE		DWG. NO.		REV	
	A		5570040		D	
	SCALE: 1:2				SHEET 1 OF 1	

PART SPECIFICATION FORM

ACP

BENDPAK Number:	5570129
MRP Description:	1/4" HYDRAULIC HOSE 31 CL-0400X
Date:	05/24/2018
ECO :	00950

1. Engineering Specification

Application:

1/4" HYDRAULIC HOSE

Detailed Description:

ONE or TWO BRAID STEEL WIRE HYDRAULIC HOSE

SIZE: 1/4" / 6mm I.D. MIN
0.53" / 13.4mm O.D. MAX

SPECS: 5700PSI OR 393 BAR WORKING PRESSURE MINIMUM
17100PSI OR 1179 BAR MINIMUM BURST PRESSURE MINIMUM
3" / 80mm MIN BEND RADIUS

COLOR: BLACK

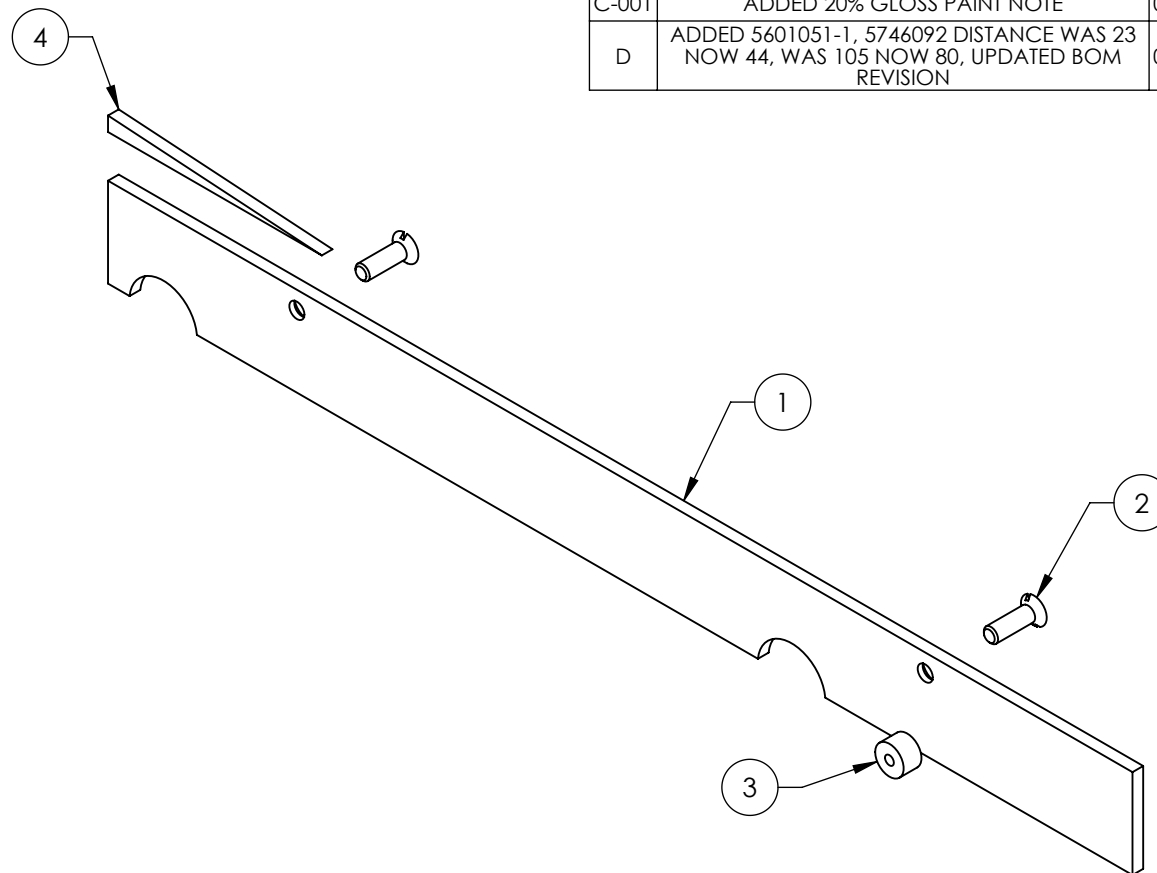
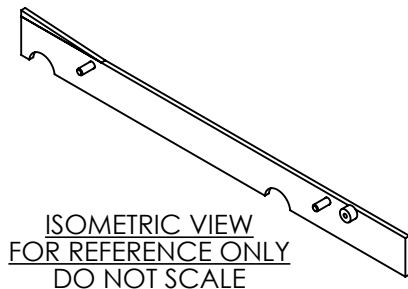
ADDITIONAL CONTACT INFORMATION:

Xin Yurong
Shandong Ningjin High Energy Hose Co., Ltd.
Tel: +86 534-5421821
No. 7, Taishan Rd., Industrial Park, Ningjin County, Shandong, China



2. Vendor Information (Or for Reference)

Approved Vendor	Vendor Part #	Contact #	AUTHORIZED COMPONENT PROVIDER
1) Ningjin Hydraulic Hose Co.	5570129	+86 534-5421821	X
2)			
OR BENDPAK ENGINEERING APPROVED EQUIVALENT			



REVISION				
REV	DESCRIPTION	DATE	EDITED BY	ECO#
B	UPDATED BOM REVISION	11/01/2016	TS	00781
C	WAS 17 NOW 23, REPLACED 5530002 WITH 5530332, UPDATED PAINT & BOM REVISION	07/20/2017	TM	00852
C-001	ADDED 20% GLOSS PAINT NOTE	04/17/2020	CA	01161
D	ADDED 5601051-1, 5746092 DISTANCE WAS 23 NOW 44, WAS 105 NOW 80, UPDATED BOM REVISION	08/23/2022	TM	01433

WHERE USED
P9000 SERIES

NOTE: UNLESS OTHERWISE SPECIFIED.

- REFER TO MODEL FOR ADDITIONAL INFORMATION
- BREAK AND DEBURR ALL SHARP EDGES 0.3mm
- REMOVE ALL WELD SPLATTER
- DIMENSIONS SHOWN ARE AFTER PAINTING
- PAINT GRAY (RAL-7024) 20% GLOSS
- THREADS MUST BE CLEAN AND FREE OF ALL WELD SPLATTER AND PAINT

NEXT ASSEMBLY
5215500

ITEM NO	PART NUMBER	DESCRIPTION	QTY	REV
1	5731041	P9000 SAFETY LOCKOUT BAR, L.H.	1	D
2	5530332	FHS M8 x 1.25 x 25	2	-
3	5746092	P-6B/9000 SERIES SAFETY RELEASE BUNG	1	B
4	5601051-1	SAFETY BAR EXTENSION	1	-

DO NOT SCALE DRAWING

DIMENSIONS ARE IN MM
TOLERANCES:
0. = ±1.5
0.0 = ±0.5

SURFACE FINISH 1.6 ISO Ra µm
FOR MACHINED SURFACES
UNLESS OTHERWISE SPECIFIED

NAME	DATE
DRAWN TM	11/10/2015
CHECKED OR	08/25/2022

THIRD ANGLE PROJECTION



PROPRIETARY AND CONFIDENTIAL
THE INFORMATION CONTAINED IN THIS DRAWING IS
THE SOLE PROPERTY OF BENDPAK INC. ANY
REPRODUCTION IN PART OR AS A WHOLE WITHOUT
THE WRITTEN PERMISSION OF BENDPAK INC. IS
PROHIBITED.



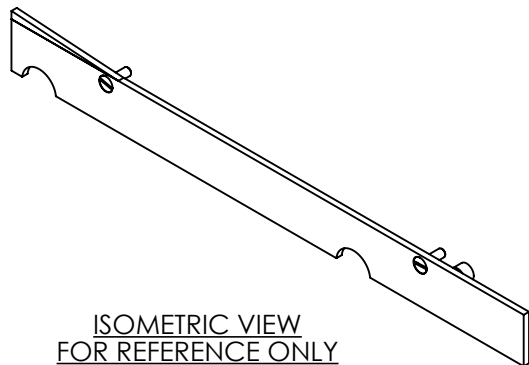
1645 LEMONWOOD DR.
SANTA PAULA, CA 93060

TITLE: P9000 SAFETY LOCKOUT
BAR WELDMENT, LH

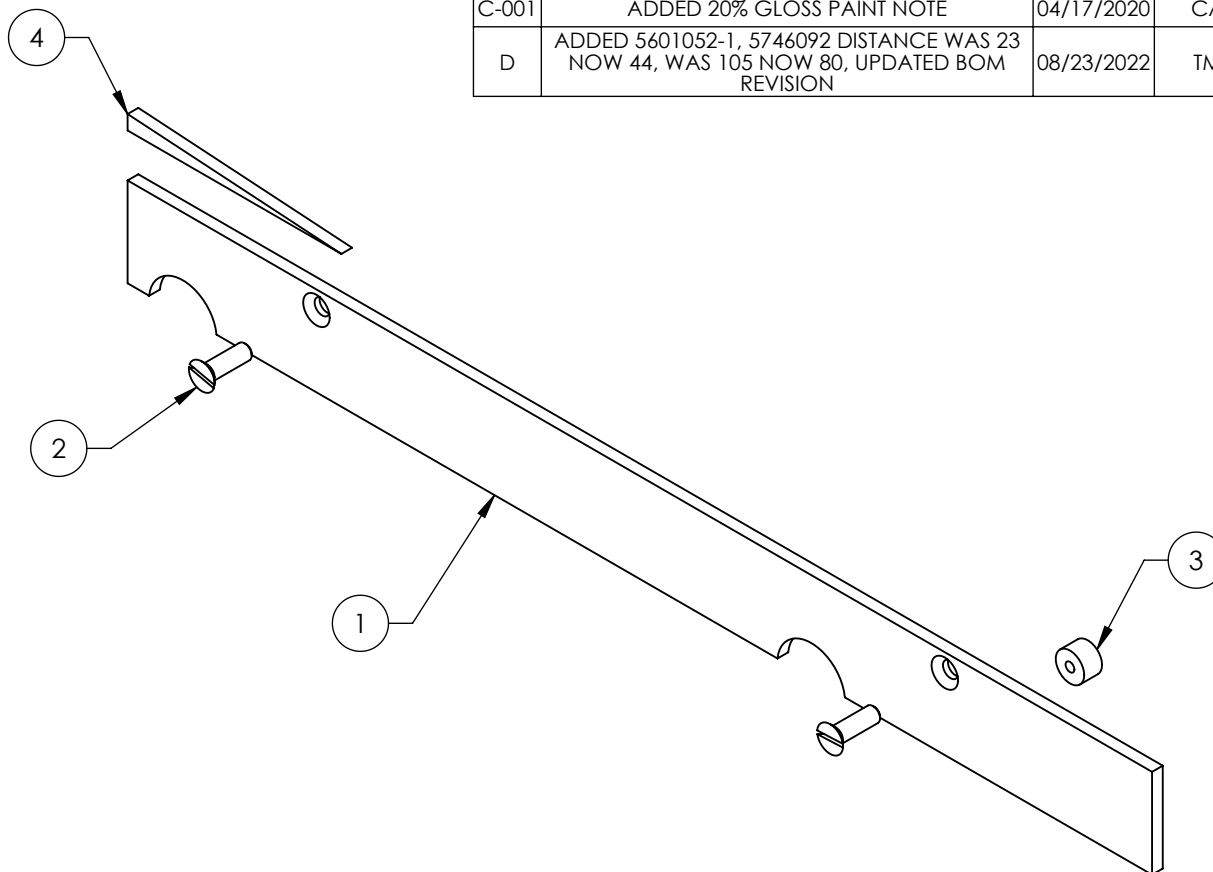
SIZE	DWG. NO.	REV
A	5601051	D

SCALE: 1:3

SHEET 1 OF 2



ISOMETRIC VIEW
FOR REFERENCE ONLY
DO NOT SCALE



REVISION				
REV	DESCRIPTION	DATE	EDITED BY	ECO#
B	UPDATED BOM REVISION	10/28/2016	TS	00781
C	WAS 17 NOW 23, REPLACED 5530002 WITH 5530332, UPDATED PAINT COLOR AND BOM REVISION	07/20/2017	TM	00852
C-001	ADDED 20% GLOSS PAINT NOTE	04/17/2020	CA	01161
D	ADDED 5601052-1, 5746092 DISTANCE WAS 23 NOW 44, WAS 105 NOW 80, UPDATED BOM REVISION	08/23/2022	TM	01433

WHERE USED
P9000 SERIES

NOTE: UNLESS OTHERWISE SPECIFIED.

1. REFER TO MODEL FOR ADDITIONAL INFORMATION
2. BREAK AND DEBURR ALL SHARP EDGES 0.3mm
3. REMOVE ALL WELD SPLATTER
4. DIMENSIONS SHOWN ARE AFTER PAINTING
5. PAINT GRAY (RAL-7024) 20% GLOSS
6. THREADS MUST BE CLEAN AND FREE OF ALL WELD SPLATTER AND PAINT

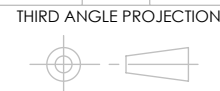
ITEM NO.	PART NUMBER	DESCRIPTION	QTY.	REV
1	5731042	P9000 SAFETY LOCKOUT BAR, R.H.	1	D
2	5530332	FHS M8 x 1.25 x 25	2	-
3	5746092	P-6B/9000 SERIES SAFETY RELEASE BUNG	1	B
4	5601052-1	SAFETY BAR EXTENSION	1	--

DO NOT SCALE DRAWING

DIMENSIONS ARE IN MM
TOLERANCES:
0. = ±1.5
0.0 = ±0.5

SURFACE FINISH 1.6 ISO Ra µm
FOR MACHINED SURFACES
UNLESS OTHERWISE SPECIFIED

NAME DATE
DRAWN TM 11/10/2015
CHECKED OR 08/25/2022



THIRD ANGLE PROJECTION
PROPRIETARY AND CONFIDENTIAL
THE INFORMATION CONTAINED IN THIS DRAWING IS
THE SOLE PROPERTY OF BENDPAK INC. ANY
REPRODUCTION IN PART OR AS A WHOLE WITHOUT
THE WRITTEN PERMISSION OF BENDPAK INC. IS
PROHIBITED.

BendPak.
1645 LEMONWOOD DR.
SANTA PAULA, CA 93060

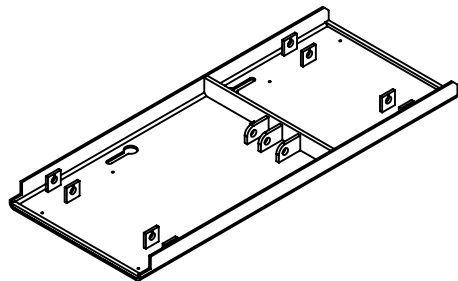
TITLE: P9000 SAFETY LOCKOUT
BAR WELDMENT, RH

SIZE DWG. NO. REV
A 5601052 D

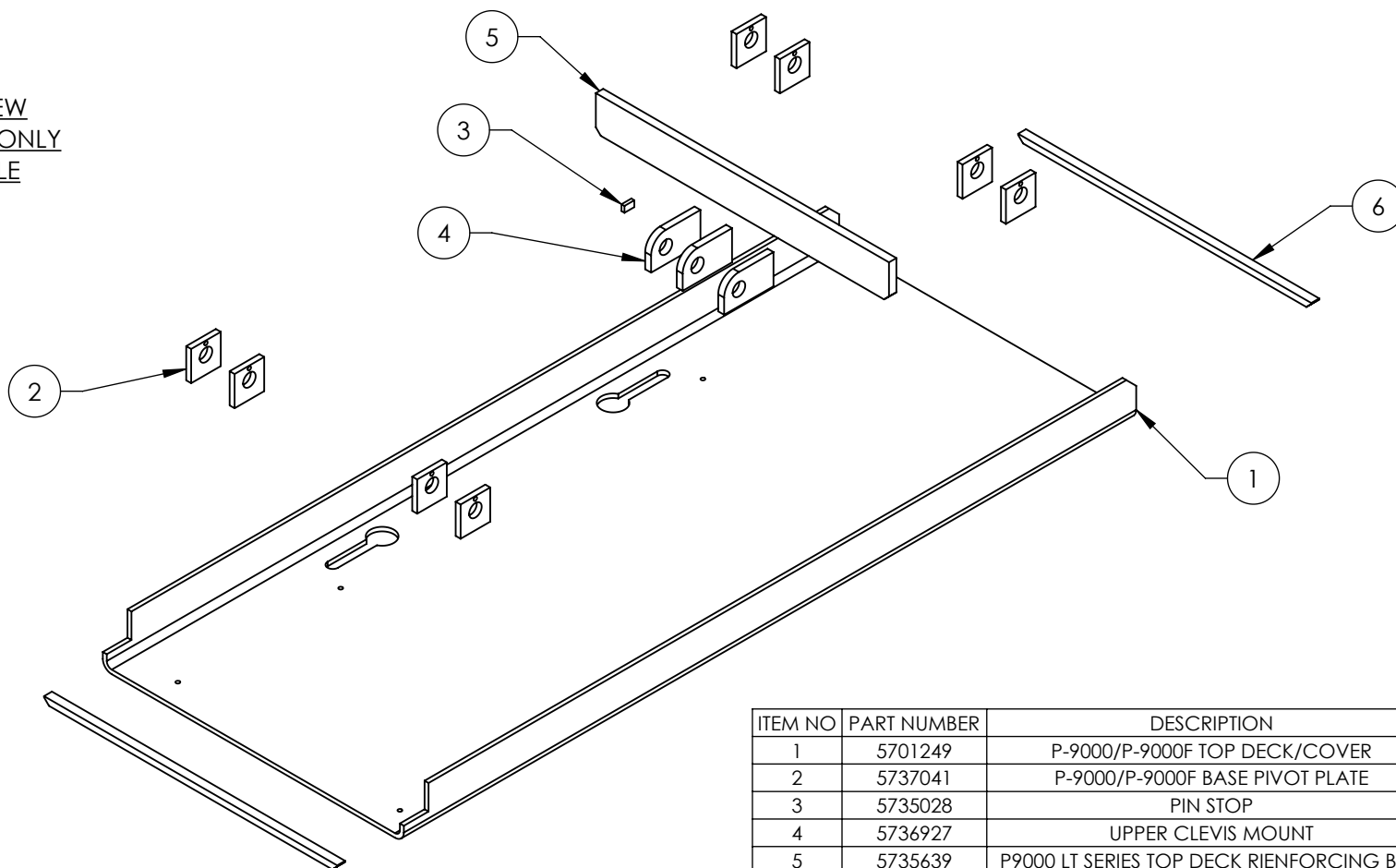
SCALE: 1:3

SHEET 1 OF 2

NEXT ASSEMBLY
5215498



ISOMETRIC VIEW
FOR REFERENCE ONLY
DO NOT SCALE



REVISION				
REV	DESCRIPTION	DATE	EDITED BY	ECO#
A	PRODUCTION RELEASE, DERIVED FROM 5600899	01/08/2018	TS	00903
B	ADDED 5737142, ADDED CRITICAL DIMENSIONS AND MODEL REFERENCE NOTE	09/26/2019	TM	01128
C	REMOVED 5737142, UPDATED BOM REVISION	07/29/2022	TM	01433



ITEM NO	PART NUMBER	DESCRIPTION	QTY	REV
1	5701249	P-9000/P-9000F TOP DECK/COVER	1	B
2	5737041	P-9000/P-9000F BASE PIVOT PLATE	8	A
3	5735028	PIN STOP	1	B
4	5736927	UPPER CLEVIS MOUNT	3	A
5	5735639	P9000 LT SERIES TOP DECK RIENFORCING BAR	1	A
6	5737072	P9000LT RAMP SPACER	2	A

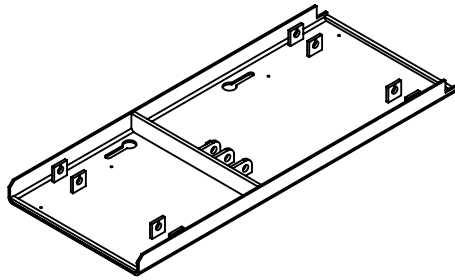
WHERE USED
P9000LT
P9000LTF

NOTE: UNLESS OTHERWISE SPECIFIED.

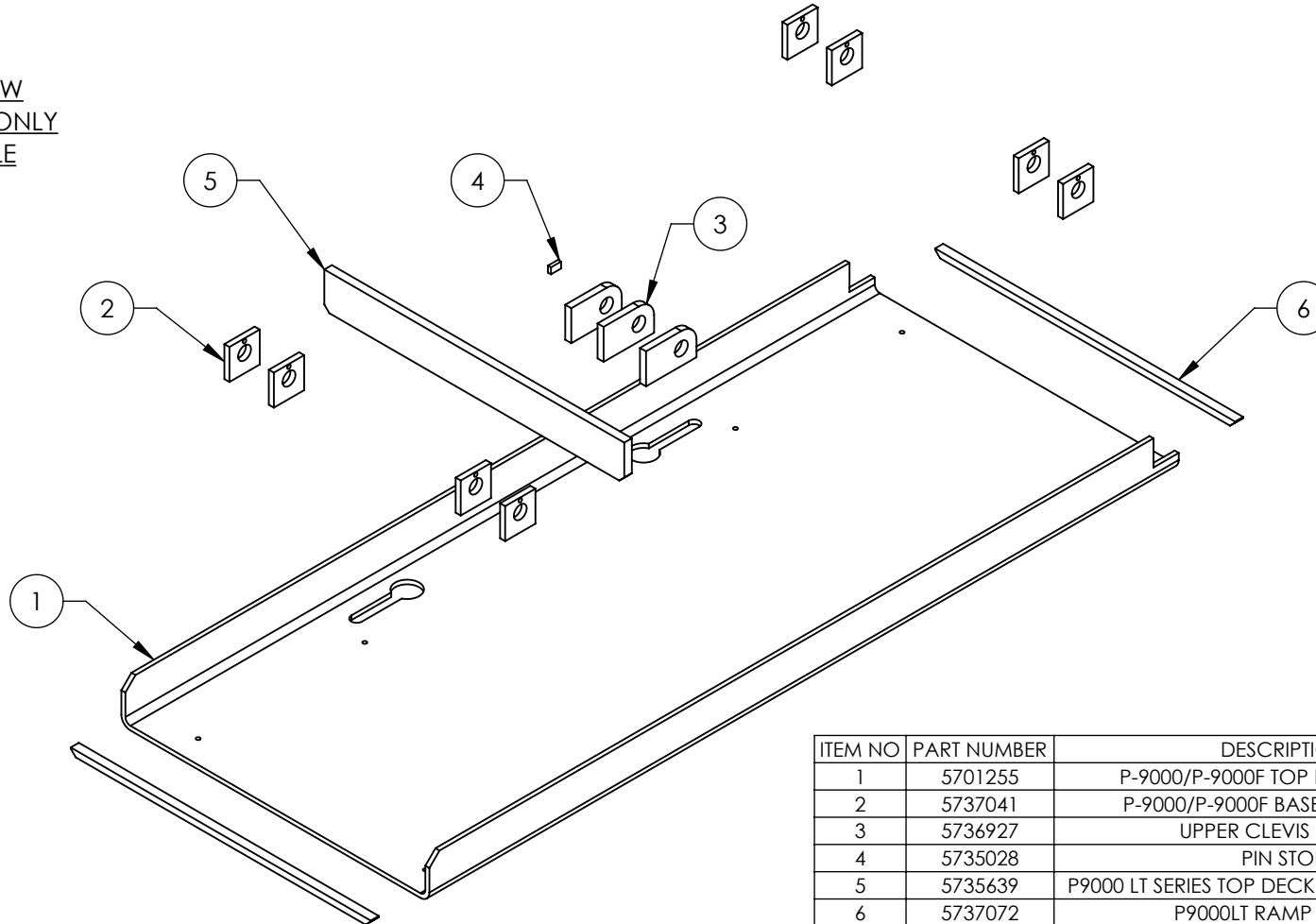
1. REFER TO MODEL FOR ADDITIONAL INFORMATION
2. BREAK AND DEBURR ALL SHARP EDGES 0.3mm
3. REMOVE ALL WELD SPLATTER

NEXT ASSEMBLY
5215499

DO NOT SCALE DRAWING		NAME	DATE	 1645 LEMONWOOD DR. SANTA PAULA, CA 93060
DIMENSIONS ARE IN MM TOLERANCES: 0. = ±1.5 0.0 = ±0.5		DRAWN	TS	
SURFACE FINISH 1.6 ISO Ra µm FOR MACHINED SURFACES UNLESS OTHERWISE SPECIFIED		CHECKED	OR	
THIRD ANGLE PROJECTION				TITLE: P9000LT R.H. TOP DECK WELDMENT
PROPRIETARY AND CONFIDENTIAL THE INFORMATION CONTAINED IN THIS DRAWING IS THE SOLE PROPERTY OF BENDPAK INC. ANY REPRODUCTION IN PART OR AS A WHOLE WITHOUT THE WRITTEN PERMISSION OF BENDPAK INC. IS PROHIBITED.		SIZE	DWG. NO.	REV
		A	5601217	C
		SCALE: 1:10		SHEET 1 OF 3



ISOMETRIC VIEW
FOR REFERENCE ONLY
DO NOT SCALE



REVISION				
REV	DESCRIPTION	DATE	EDITED BY	ECO#
A	PRODUCTION RELEASE, DERIVED FROM 5600898	01/08/2018	TS	00903
B	ADDED 5737142, ADDED CRITICAL DIMENSIONS AND MODEL REFERENCE NOTE	09/30/2019	TM	01128
C	REMOVED 5737142, UPDATED BOM REVISION	07/29/2022	TM	01433

WHERE USED
P9000LT
P9000LTF

NOTE: UNLESS OTHERWISE SPECIFIED.

- REFER TO MODEL FOR ADDITIONAL INFORMATION
- BREAK AND DEBURR ALL SHARP EDGES 0.3mm
- REMOVE ALL WELD SPLATTER

NEXT ASSEMBLY
5215745

ITEM NO	PART NUMBER	DESCRIPTION	QTY	REV
1	5701255	P-9000/P-9000F TOP DECK/COVER	1	A
2	5737041	P-9000/P-9000F BASE PIVOT PLATE	8	A
3	5736927	UPPER CLEVIS MOUNT	3	A
4	5735028	PIN STOP	1	B
5	5735639	P9000 LT SERIES TOP DECK RIENFORCING BAR	1	A
6	5737072	P9000LT RAMP SPACER	2	A

DO NOT SCALE DRAWING

DIMENSIONS ARE IN MM
TOLERANCES:
0. = ±1.5
0.0 = ±0.5

SURFACE FINISH 1.6 ISO Ra µm
FOR MACHINED SURFACES
UNLESS OTHERWISE SPECIFIED

NAME	DATE
DRAWN TS	01/08/2018
CHECKED OR	08/25/2022

THIRD ANGLE PROJECTION



PROPRIETARY AND CONFIDENTIAL
THE INFORMATION CONTAINED IN THIS DRAWING IS
THE SOLE PROPERTY OF BENDPAK INC. ANY
REPRODUCTION IN PART OR AS A WHOLE WITHOUT
THE WRITTEN PERMISSION OF BENDPAK INC. IS
PROHIBITED.

BendPak.

1645 LEMONWOOD DR.
SANTA PAULA, CA 93060

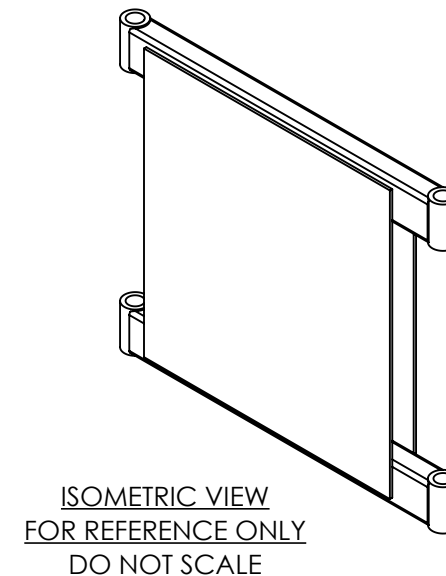
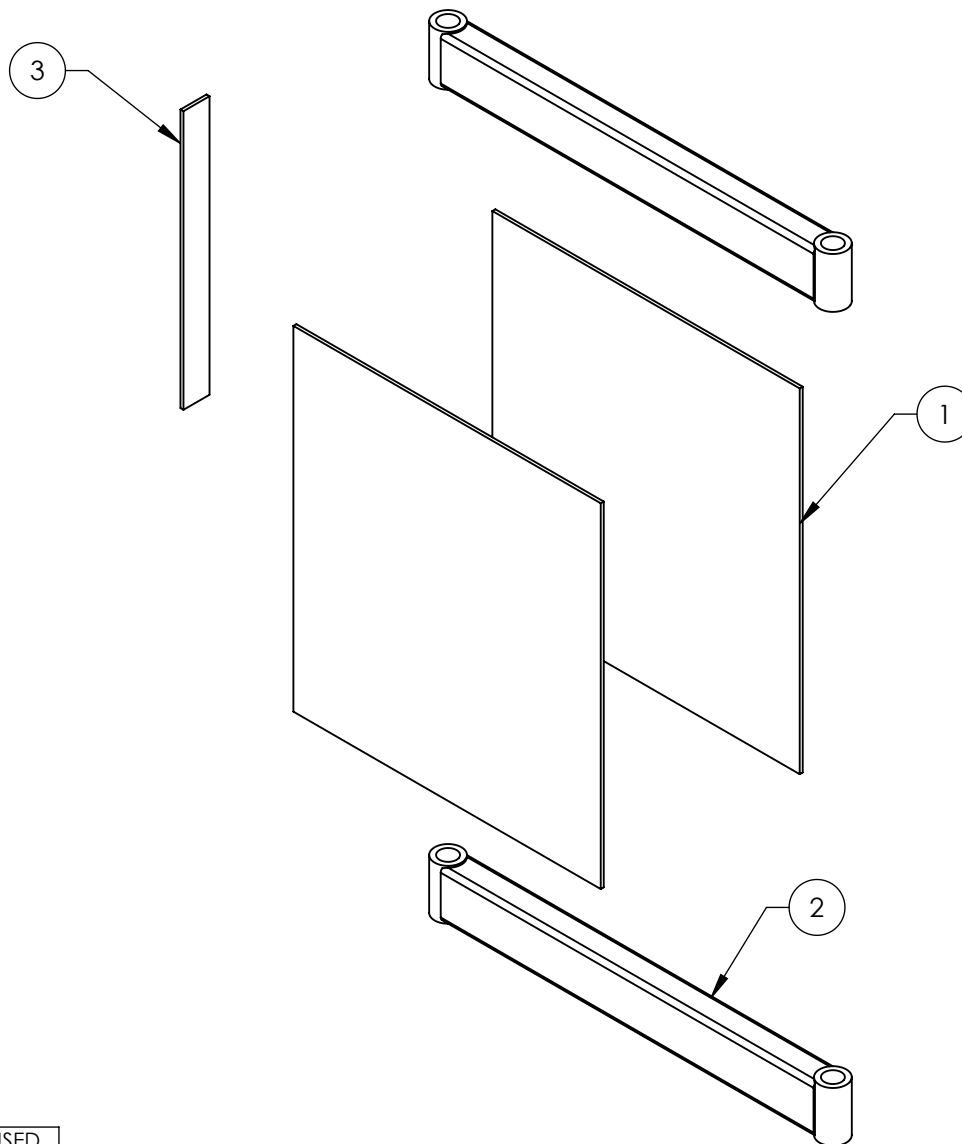
TITLE: P9000LT L.H TOP DECK
WELDMENT

SIZE DWG. NO.	REV
A 5601218	C

SCALE: 1:10

SHEET 1 OF 3

REVISION				
REV	DESCRIPTION	DATE	EDITED BY	ECO#
A	PRODUCTION RELEASE, DERIVED FROM 5620286	01/05/2018	TS	00903
A-001	ADDED 20% GLOSS PAINT NOTE	04/17/2020	CA	01161




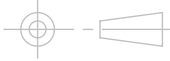
WHERE USED
P9000 SERIES

NOTE: UNLESS OTHERWISE SPECIFIED.

1. REFER TO MODEL FOR ADDITIONAL INFORMATION
2. BREAK AND DEBURR ALL SHARP EDGES 0.3mm
3. REMOVE ALL WELD SPLATTER
4. DIMENSIONS SHOWN ARE AFTER PAINTING
5. PAINT BENDPAK GRAY (RAL-7024) 20% GLOSS

NEXT ASSEMBLY
5215498
5215500

ITEM NO.	PART NUMBER	DESCRIPTION	QTY.	REV
1	5735638	P9000 LT SERIES ARM PLATE	2	A
2	5620612	P9000LT SERIES ASYMMETRIC HINGE ARM WELDMENT	2	A
3	5735642	P9000 LT SERIES SMALL ARM PLATE	1	A

DO NOT SCALE DRAWING		NAME	DATE	 1645 LEMONWOOD DR. SANTA PAULA, CA 93060 TITLE: P9000LT SERIES ASYMMETRIC HINGE DOUBLE ARM WELDMENT
DIMENSIONS ARE IN MM TOLERANCES: 0. = ±1.5 0.0 = ±0.5		DRAWN	TS 11/08/2017	
SURFACE FINISH 1.6 ISO Ra µm FOR MACHINED SURFACES UNLESS OTHERWISE SPECIFIED		CHECKED	OR 04/23/2020	
THIRD ANGLE PROJECTION				SIZE DWG. NO.
PROPRIETARY AND CONFIDENTIAL THE INFORMATION CONTAINED IN THIS DRAWING IS THE SOLE PROPERTY OF BENDPAK INC. ANY REPRODUCTION IN PART OR AS A WHOLE WITHOUT THE WRITTEN PERMISSION OF BENDPAK INC. IS PROHIBITED.		A 5620613		REV
		SCALE: 1:8		SHEET 1 OF 2

PART SPECIFICATION FORM (STANDARD)

BENDPAK Number:	5900022
MRP Description:	P9000LT INSTALLATION AND OPERATION MANUAL
Date:	08/19/2022
ECO :	---

1. Engineering Specification

Application:

INSTALLATION MANUAL

Detailed Description:

Print Settings

Unless otherwise specified, use these settings for printing BendPak manuals:

Size:	A4 (210 to 297 mm), 8.5 by 11 inches (216 to 279 mm), or between
Color:	Black and White
Binding:	Saddle Stitched
Paper:	100 to 120 gsm (27 to 32 pound), uncoated



1645 Lemonwood Dr.
Santa Paula, CA 93060 USA
Toll Free (800) 253-2383
Tel: (805) 933-9970
bendpak.com

Low-Rise Pit Lift

Installation and Operation Manual

Manual P/N 5900022 — Manual Revision C1 — August 2022

Models:

- P-9000LT
- P-9000LTF



Model P-9000LT shown.

Designed and engineered by BendPak Inc. in Southern California, USA. Made in China.



Read the *entire* contents of this manual *before* using this product. Failure to follow the instructions and safety precautions in this manual can result in serious injury or death. Make sure all other installers and operators also read this manual. Keep the manual near the product for future reference. ***By proceeding with setup and operation, you agree that you fully understand the contents and assume full responsibility for product use.***

2. Vendor Information (Or for Reference)

Approved Vendor	Vendor Part #	Contact #	Preferred Vendor
1)			
OR BENDPAK ENGINEERING APPROVED EQUIVALENT			