

Service Manual

SERVICE PARTS & DIAGRAMS

BENDPAK

RBJ18000

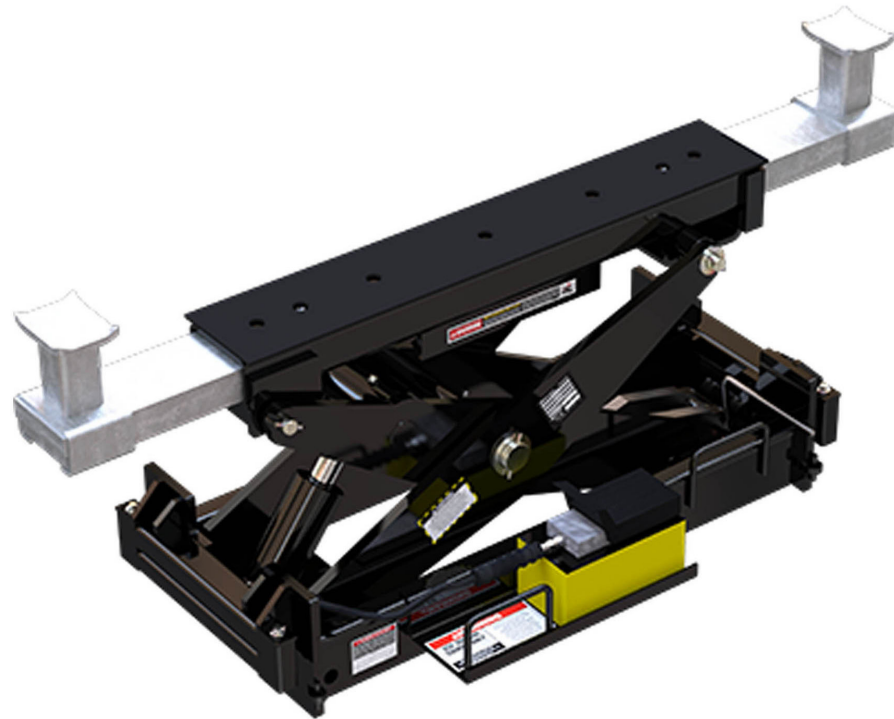
PRODUCT SKU
5175032

DRAWING Nº
5260279

CATEGORY
Rolling Bridge Jack

REV
Version V

DATE
12.15.2022



BendPak.

This guide is a troubleshooting reference used for maintaining and servicing your Bend Pak product. It provides comprehensive information on identifying serviceable parts and components and assists in troubleshooting problems and performing assembly /disassembly procedures.

BendPak, Inc. Corporate Office
1645 Lemonwood Drive
Santa Paula, CA 93060 USA
Toll Free US/Canada: 1-800-253-2363
Fax: 1-805-933-9160
info@bendpak.com

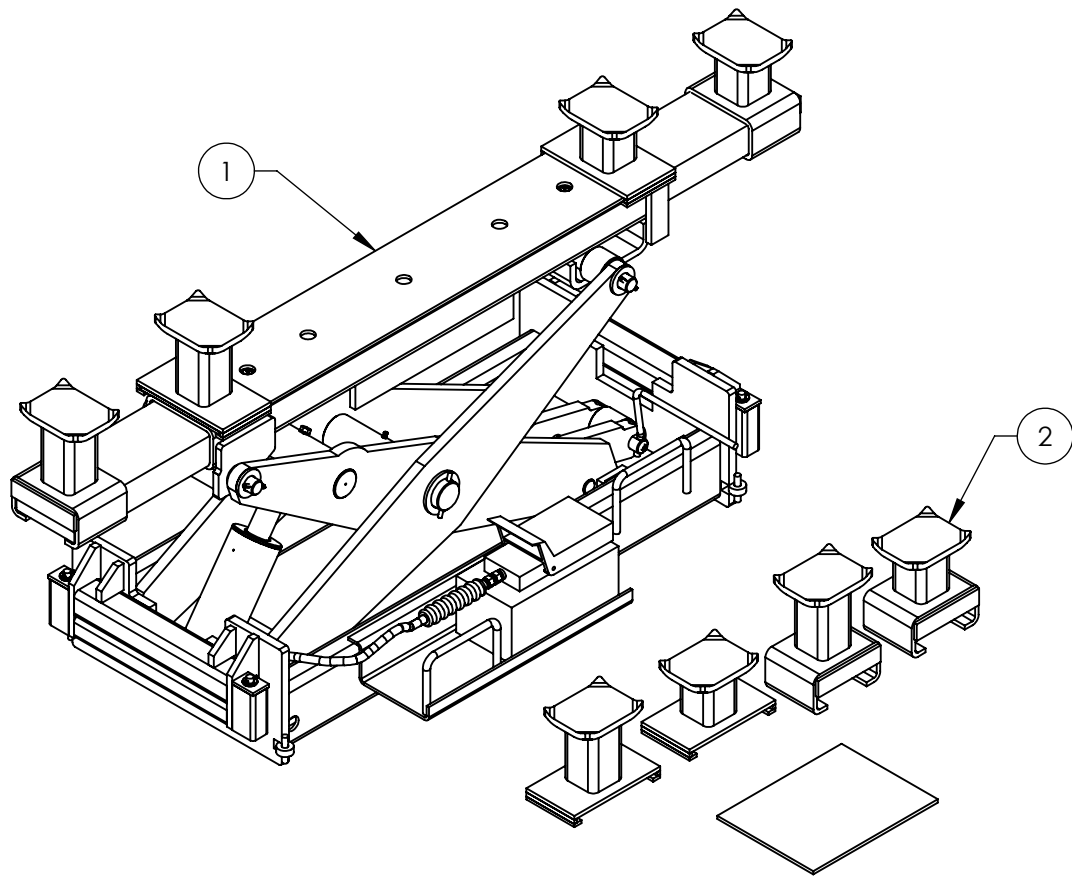
Customer Service Desk / Warranty
Customer Service Representatives
Office Tel: 1-805-933-9970
Toll Free US/Canada: 1-800-253-2363
Fax: 1-805-933-9160
customerservice@bendpak.com

Parts Orders
Customer Service Representatives
Office Tel: 1-805-933-9970
Toll Free US/Canada: 1-800-253-2363
Fax: 1-805-933-9160
parts@bendpak.com

Domestic Sales & Service
USA Sales Representatives
Office Tel: 1-805-933-9970
Toll Free US/Canada: 1-800-253-2363
Fax: 1-805-933-9160
sales@bendpak.com

International Sales & Service
Office Tel: 1-805-933-9970
Exports Dept: 1-805-933-9970 EXT. 192
Ext. Toll Free US/Canada: 1-800-253-2363
Fax: 1-805-933-9160
bpkexports@bendpak.com




REVISION				
REV	DESCRIPTION	DATE	EDITED BY	ECO#
T	UPDATED BOM REVISION	11/06/2020	CA	01230
U	ADDED 5905775 AND 5906044	09/02/2021	CA	01322
V	REPLACED LABELS WITH COLORS & GRAPHICS NOTE, REPLACED 5940056 WITH PACKAGING INSTRUCTION NOTE	09/29/2021	CA	01348

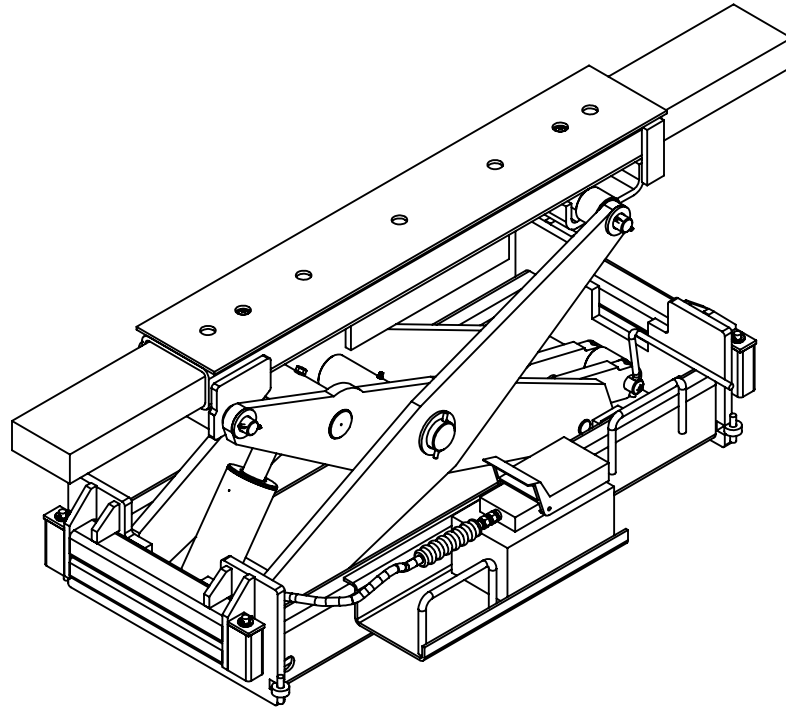


NOTE: UNLESS OTHERWISE SPECIFIED.

1. REFER TO MODEL FOR ADDITIONAL INFORMATION
2. SEE SHIPPING INSTRUCTIONS FOR FINAL PACKAGING
3. SEE COLORS & GRAPHICS FOR LABEL PLACEMENT
4. APPLY LIQUID THREAD SEALANT TO FITTINGS PRIOR TO ASSEMBLY.
SEE BP SPECIFICATION FORM 5580012

ITEM NO	PART NUMBER	DESCRIPTION	QTY	REV
1	5205006	RBJ18000/25000 LIFT SUPERSTRUCTURE	1	M
2	5250117	RBJ18000/25000 PARTS BOX	1	G
-	5900004	RBJ SERIES MANUAL	1	--

DO NOT SCALE DRAWING		NAME	DATE	 1645 LEMONWOOD DR. SANTA PAULA, CA 93060
DIMENSIONS ARE IN MM 		DRAWN	TM	01/07/2016
		CHECKED	OR	10/01/2021
THIRD ANGLE PROJECTION 		TITLE:		
		RBJ18000 PRODUCTION LIFT VER C		
PROPRIETARY AND CONFIDENTIAL <small>THE INFORMATION CONTAINED IN THIS DRAWING IS THE SOLE PROPERTY OF BENDPAK INC. ANY REPRODUCTION IN PART OR AS A WHOLE WITHOUT THE WRITTEN PERMISSION OF BENDPAK INC. IS PROHIBITED.</small>		SIZE	DWG. NO.	REV
		A	5260279	V
SCALE: 1:12				SHEET 1 OF 2



WHERE USED
RBJ18000
RBJ25000

NOTE: UNLESS OTHERWISE SPECIFIED.

1. REFER TO MODEL FOR ADDITIONAL INFORMATION
2. SEE SHIPPING INSTRUCTIONS FOR FINAL PACKAGING
3. ASSEMBLE ITEMS AS SHOWN



AIR HYDRAULIC PUMP MUST BE INSTALLED USING THE INCLUDED BOLTS

NEXT ASSEMBLY
5260279
5260544

REVISION				
REV	DESCRIPTION	DATE	EDITED BY	ECO#
K	UPDATED BOM REVISION	01/02/2019	TS	01038
L	UPDATED BOM REVISION	08/06/2019	CA	01112
M	UPDATED BOM REVISION	11/06/2020	CA	01230

ITEM NO.	PART NUMBER	DESCRIPTION	QTY	REV
1	5600355	RBJ BASE WELDMENT	1	F
2	5215180	RBJ18000/25000 SCISSOR ASSEMBLY	1	J
3	5215456	RBJ18000/25000 UPPER EXTENSION ARM ASSEMBLY	1	C
4	5502167	CYLINDER ASSEMBLY Ø3.0 x 4.5	1	F
5	5745057	RBJ18000/25000 CYLINDER PIVOT PIN	1	B
6	5746628	RJ/RBJ18000/25000 SMALL UPPER PIVOT SHAFT	1	C
7	5746094	RJ/RBJ18000/25000 LONG UPPER PIVOT SHAFT	1	C
8	5755118	RJ/RBJ18000/25000 LONG UPPER TUBE SPACER	1	D
9	5746629	RJ/RBJ18000/25000 SPACER	2	C
10	5746155	RBJ15000/18000/25000 SAFETY PIN	1	B
11	5300913	RBJ15000/18000/25000 SAFETY	2	B
12	5300871	RBJ15000/18000/25000 SAFETY HANDLE	1	C
13	5210219	RBJ45000 BYB/15000/18000/25000 RAIL ROLLER ASSEMBLY	4	D
14	5570806	RJW SERIES HOSE ASSY Ø6.4mm x 600mm DS	1	E
15	5736508	RJ/RBJ18000/25000 RETAINING WASHER	4	C
16	5505106	SPRING PIN M6 x 50	4	-
17	5545130	WASHER 3/8" SL	1	-
18	5530133	HHB 3/8"-16 x 3" GR8/CL 10.9	1	-
19	5530054	SSS M10x1.5x12	5	-
20	5585736	AIR HYDRAULIC PUMP YELLOW RBJ18000/25000 PSI:9700	1	-
21	5550086	FTG ELB -04 NPT x -04 JIC	1	-
22	5550493	FTG RST -04 JIC x -06 NPT x .062 ID	1	-
23	5545347	WASHER, M12 FLAT WASHER	4	-
24	5540027	COMPRESSION SPRING 22 x 50mm	4	A
25	5505006	COTTER PIN Ø3.2 x 20mm	4	-

DO NOT SCALE DRAWING

DIMENSIONS ARE IN MM



NAME	DATE
DRAWN TM	11/17/2015
CHECKED OR	11/12/2020

THIRD ANGLE PROJECTION



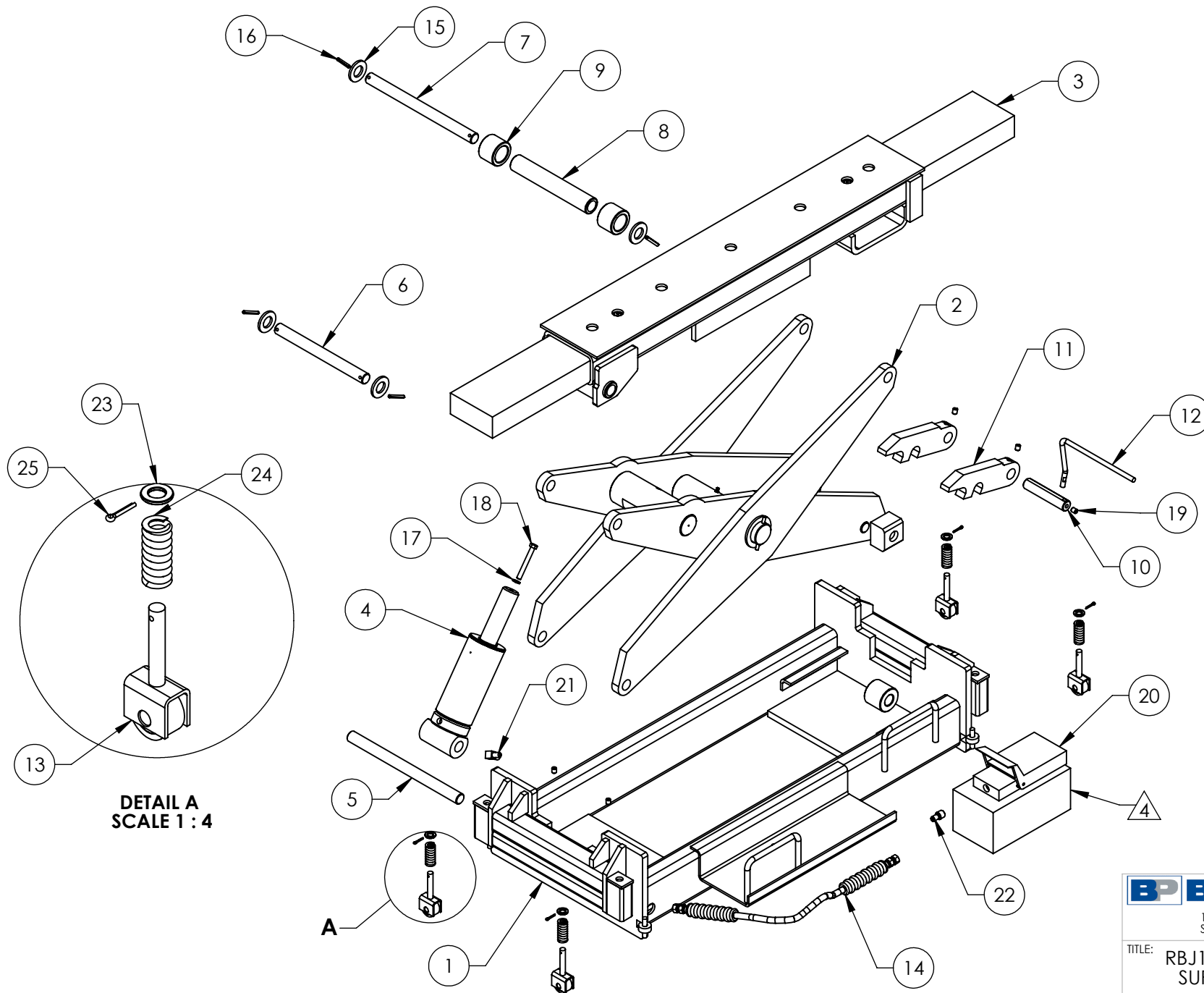
PROPRIETARY AND CONFIDENTIAL
THE INFORMATION CONTAINED IN THIS DRAWING IS THE SOLE PROPERTY OF BENDPAK INC. ANY REPRODUCTION IN PART OR AS A WHOLE WITHOUT THE WRITTEN PERMISSION OF BENDPAK INC. IS PROHIBITED.

BendPak
1645 LEMONWOOD DR.
SANTA PAULA, CA 93060

TITLE: RBJ18000/25000 LIFT SUPERSTRUCTURE

SIZE DWG. NO. REV
A 5205006 M

SCALE: 1:12 SHEET 1 OF 2



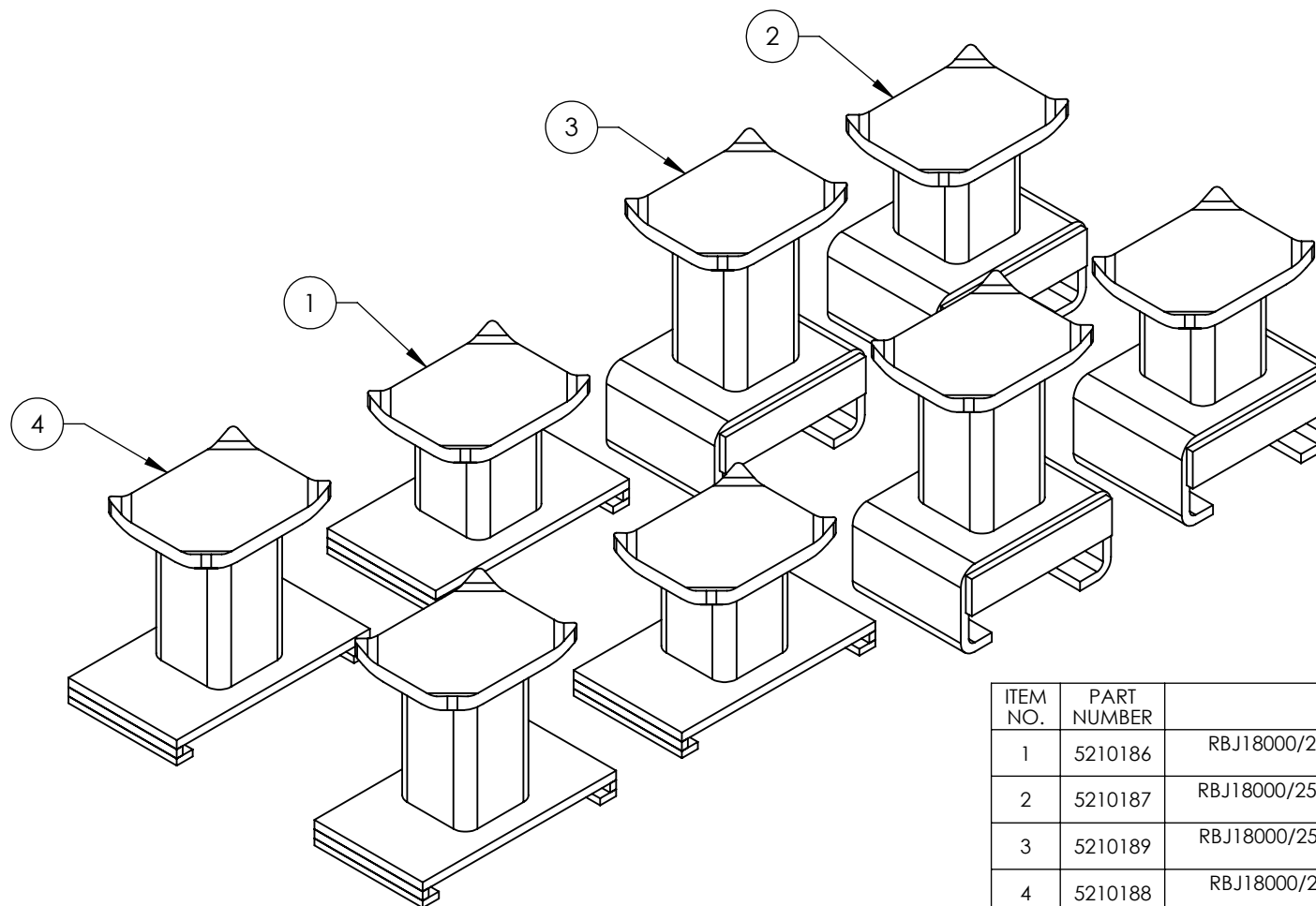
BendPak.

1645 LEMONWOOD DR.
SANTA PAULA, CA 93060

TITLE: RBJ18000/25000 LIFT
SUPERSTRUCTURE

SIZE	DWG. NO.	REV
A	5205006	M
SCALE: 1:12		SHEET 2 OF 2

REVISION				
REV	DESCRIPTION	DATE	EDITED BY	ECO#
E	REMOVED 5745054, REPLACED (1) 5210423 WITH 5210186, REPLACED (1) 5210423 WITH 5210187, REPLACED (1) 5210424 WITH 5210188, REPLACED (1) 5210424 WITH 5210189, UPDATED TITLE TO REFLECT MARKETING, UPDATED NEXT ASSEMBLIES	11/17/2015	TM	00739
F	ADDED 5580012	02/25/2020	CA	01146
G	REMOVED 5580012	09/30/2020	TM	01213



ITEM NO.	PART NUMBER	DESCRIPTION	QTY.	REV
1	5210186	RBJ18000/25000 TOP TUBE RAIL SHORT HEIGHT ADAPTER WELDMENT	2	A
2	5210187	RBJ18000/25000 EXTENSION ARM SHORT HEIGHT ADAPTER WELDMENT	2	A
3	5210189	RBJ18000/25000 EXTENSION ARM LONG HEIGHT ADAPTER WELDMENT	2	A
4	5210188	RBJ18000/25000 TOP TUBE RAIL LONG HEIGHT ADAPTER WELDMENT	2	A

DO NOT SCALE DRAWING

DIMENSIONS ARE IN MM



NAME	DATE
DRAWN AC	01/05/2010
CHECKED OR	10/02/2020

THIRD ANGLE PROJECTION

PROPRIETARY AND CONFIDENTIAL
THE INFORMATION CONTAINED IN THIS DRAWING IS THE SOLE PROPERTY OF BENDPAK INC. ANY REPRODUCTION IN PART OR AS A WHOLE WITHOUT THE WRITTEN PERMISSION OF BENDPAK INC. IS PROHIBITED.

BendPak
1645 LEMONWOOD DR.
SANTA PAULA, CA 93060

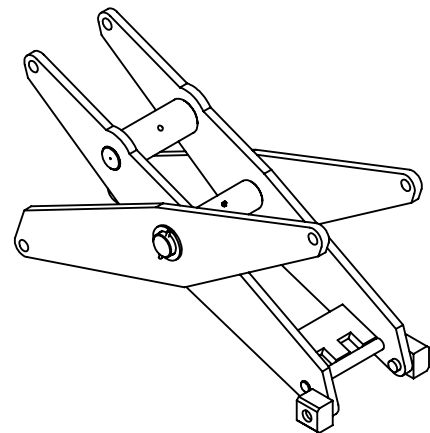
TITLE: RBJ18000/25000 PARTS BOX
SIZE DWG. NO. A 5250117
REV G
SCALE: 1:5 SHEET 1 OF 1

WHERE USED
RBJ18000
RBJ25000

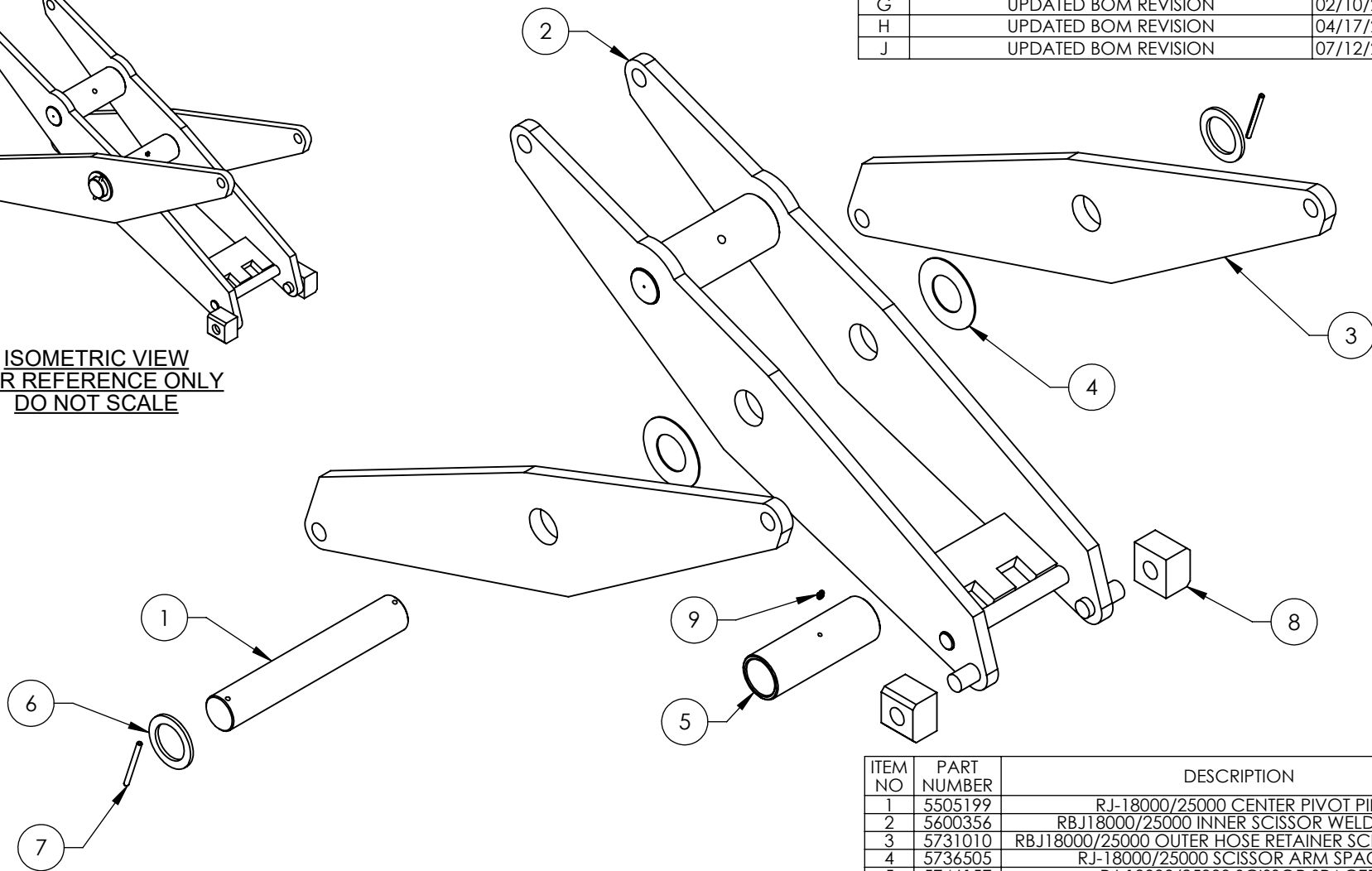
NOTE: UNLESS OTHERWISE SPECIFIED.
1. SEE SHIPPING INSTRUCTIONS FOR FINAL PACKAGING

NEXT ASSEMBLY
5260279
5260544

REVISION				
REV	DESCRIPTION	DATE	EDITED BY	ECO#
G	UPDATED BOM REVISION	02/10/2017	DB	00812
H	UPDATED BOM REVISION	04/17/2017	TM	00825
J	UPDATED BOM REVISION	07/12/2018	TM	00973



ISOMETRIC VIEW
FOR REFERENCE ONLY
DO NOT SCALE



ITEM NO	PART NUMBER	DESCRIPTION	QTY	REV
1	5505199	RJ-18000/25000 CENTER PIVOT PIN	1	A
2	5600356	RBJ18000/25000 INNER SCISSOR WELDMENT	1	E
3	5731010	RBJ18000/25000 OUTER HOSE RETAINER SCISSOR ARM	2	C
4	5736505	RJ-18000/25000 SCISSOR ARM SPACER	2	A
5	5746157	RJ-18000/25000 SCISSOR SPACER	1	A
6	5746156	RJ-18000/25000 BEARING WASHER	2	A
7	5505137	SPRING PIN M6 x 80	2	-
8	5735166	RBJ-18000/25000 PLASTIC SLIDE BLOCK	2	D
9	5550025	FTG GRS M6 x 1.0	1	-

DO NOT SCALE DRAWING

DIMENSIONS ARE IN MM
TOLERANCES: MACHINE TO
0 = ±1.5
0.0 = ±0.5
0.00 = ±0.13
ANGULAR: MACHINE TO
0 = ±1/2°
SURFACE FINISH 1.6 Ra µm
FOR MACHINED SURFACES
UNLESS OTHERWISE SPECIFIED

NAME	DATE
DRAWN AC	12/09/2009
CHECKED CA	07/23/2018

THIRD ANGLE PROJECTION



PROPRIETARY AND CONFIDENTIAL
THE INFORMATION CONTAINED IN THIS DRAWING IS
THE SOLE PROPERTY OF BENDPAK INC. ANY
REPRODUCTION IN PART OR AS A WHOLE WITHOUT
THE WRITTEN PERMISSION OF BENDPAK INC. IS
PROHIBITED.

BendPak.

1645 LEMONWOOD DR.
SANTA PAULA, CA 93060

TITLE: RBJ18000/25000
SCISSOR ASSEMBLY

SIZE DWG. NO.	REV
A 5215180	J

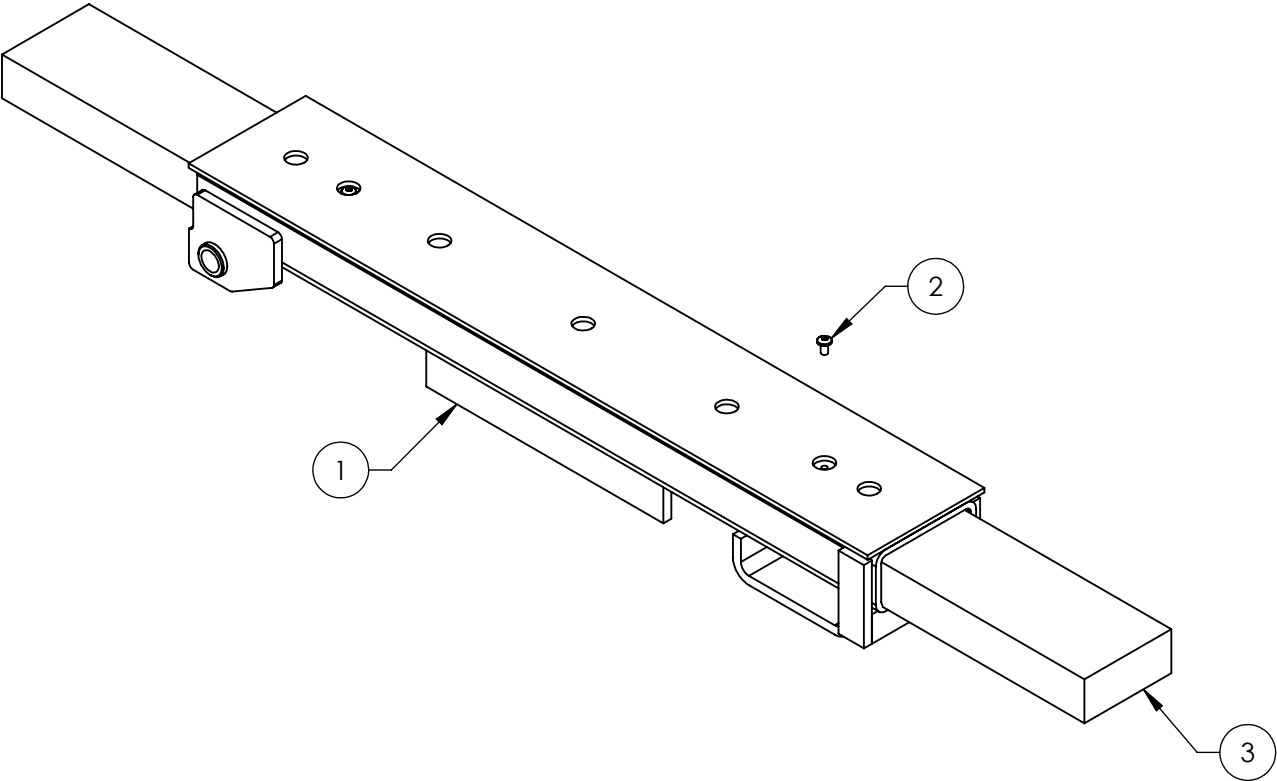
SCALE: 1:8 SHEET 1 OF 1

NOTE: UNLESS OTHERWISE SPECIFIED.




1. ASSEMBLE ITEMS AS SHOWN

NEXT ASSEMBLY
5205006

REVISION				
REV	DESCRIPTION	DATE	EDITED BY	ECO#
A	PRODUCTION RELEASE, DERIVED FROM 5215334	11/17/2015	TM	00739
B	REPLACED 5530284 WITH 5530789	12/01/2016	TM	00791
C	UPDATED BOM REVISION	04/17/2017	TM	00825



ITEM NO	PART NUMBER	DESCRIPTION	QTY	REV
1	5601066	RBJ18000/25000 UPPER ARM RECEIVER TUBE WELDMENT	1	B
2	5530789	BHSK M8 x 1.25 x 14	2	--
3	5601067	RBJ18000/25000 UPPER ARM WELDMENT	2	B

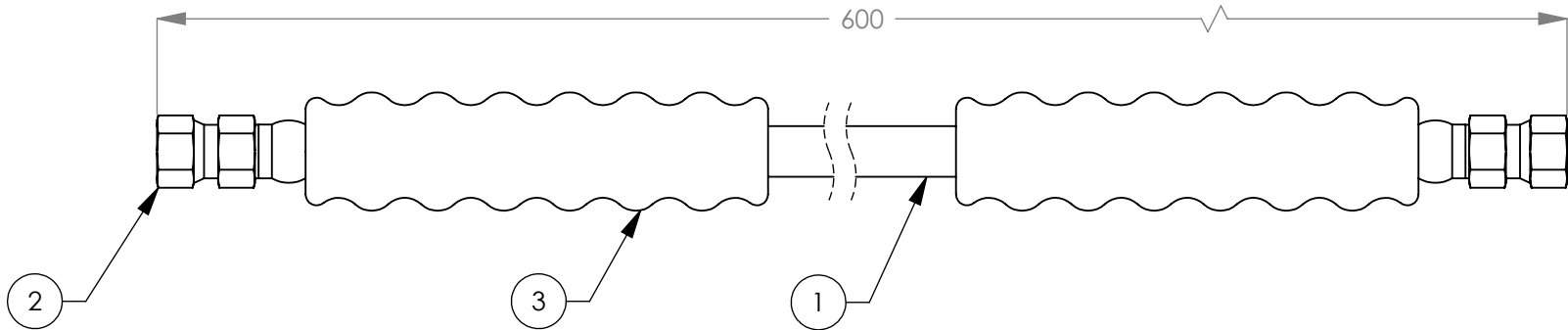
DO NOT SCALE DRAWING		NAME	DATE	 1645 LEMONWOOD DR. SANTA PAULA, CA 93060		
DIMENSIONS ARE IN MM 		DRAWN	TM	11/17/2015		
		CHECKED	DB	05/03/2017		
		THIRD ANGLE PROJECTION		TITLE: RBJ18000/25000 UPPER EXTENSION ARM ASSEMBLY		
		PROPRIETARY AND CONFIDENTIAL THE INFORMATION CONTAINED IN THIS DRAWING IS THE SOLE PROPERTY OF BENDPAK INC. ANY REPRODUCTION IN PART OR AS A WHOLE WITHOUT THE WRITTEN PERMISSION OF BENDPAK INC. IS PROHIBITED.		SIZE	DWG. NO.	REV
				A	5215456	C
				SCALE: 1:8		SHEET 1 OF 1

NOTE: UNLESS OTHERWISE SPECIFIED.

1. ASSEMBLE ITEMS AS SHOWN

NEXT ASSEMBLY
5205006

REVISION				
REV	DESCRIPTION	DATE	EDITED BY	ECO#
C	UPDATED 5570171 TO SHOW ROUTING	03/17/2015	TM	00692
C-001	UPDATED NEXT ASSEMBLIES	08/21/2015	TM	00719
D	UPDATED TITLE AND NEXT ASSEMBLIES	02/29/2016	CA	00739
E	UPDATED TITLE TO REFLECT MARKETING, UPDATED NEXT ASSEMBLIES	12/28/2018	TS	01038





WHERE USED
RJ-45LP
RJ45W
RJ7W
RJ9W
RBJ7000A
RBJ4500 BYB
RBJ15000
RBJ18000
RBJ25000

NOTE: UNLESS OTHERWISE SPECIFIED.

- FOR ITEM 1 SPECIFICATIONS REFER TO PART SPECIFICATION FORM
- LENGTH SHOWN IS AFTER SWAGING
- ITEM 1 QTY FOR REFERENCE ONLY
- 10,000 PSI / 700 BAR WORKING PRESSURE
- 40,000 PSI / 2800 BAR MIN. BURST PRESSURE

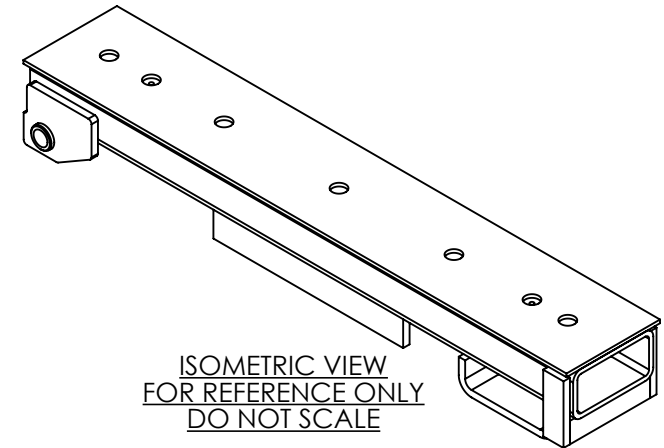
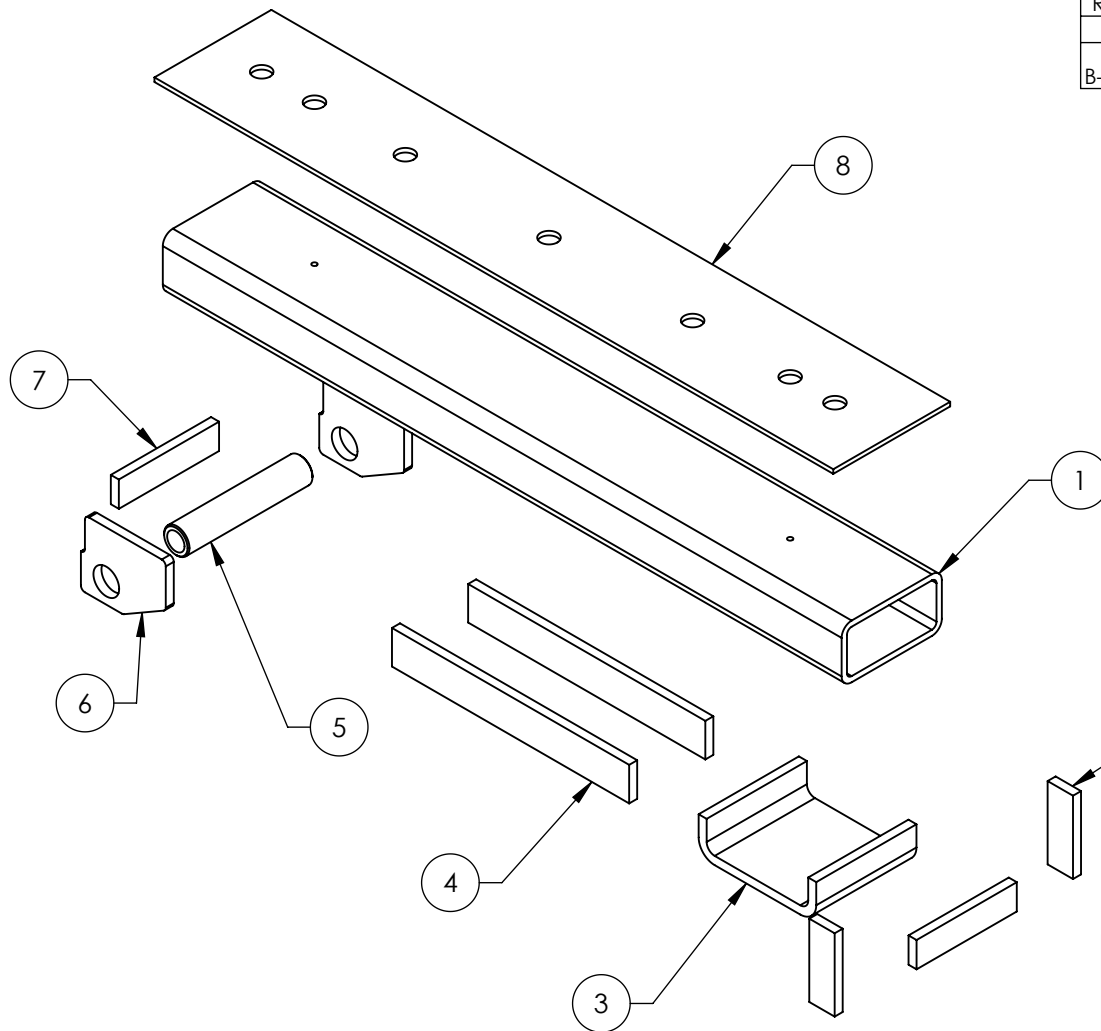
ITEM NO	PART NUMBER	DESCRIPTION	QTY	REV
1	5570171	HOSE; Ø6.35 RJ SERIES HYDRAULIC HOSE	534mm*	-
2	5550325	FTG NPL Ø1/4 CRIMP x -04 JIC	2	-
3	5570037	HOSE BEND RESTRICTOR	2	-

NEXT ASSEMBLY
5205005
5205006
5205007
5205008
5205009
5205010
5205011
5205012
5205013

DO NOT SCALE DRAWING		NAME	DATE	 1645 LEMONWOOD DR. SANTA PAULA, CA 93060
DIMENSIONS ARE IN MM TOLERANCES: 0. = ±1.5 0.0 = ±0.5 SURFACE FINISH 1.6 ISO Ra µm FOR MACHINED SURFACES UNLESS OTHERWISE SPECIFIED		DRAWN	AC	01/16/2010
		CHECKED	CA	04/24/2019
 THIRD ANGLE PROJECTION		TITLE: RJW SERIES HOSE ASSY Ø6.4mm x 600mm DS		
		SIZE	DWG. NO.	REV
		A	5570806	E
SCALE: 1:2			SHEET 1 OF 1	

PROPRIETARY AND CONFIDENTIAL
THE INFORMATION CONTAINED IN THIS DRAWING IS
THE SOLE PROPERTY OF BENDPAK INC. ANY
REPRODUCTION IN PART OR AS A WHOLE WITHOUT
THE WRITTEN PERMISSION OF BENDPAK INC. IS
PROHIBITED.

REVISION				
REV	DESCRIPTION	DATE	EDITED BY	ECO #
A	PRODUCTION RELEASE, DERIVED FROM 5600357	11/16/2015	TM	00739
B	UPDATED BOM REVISION	12/01/2016	TM	00791
B-001	ADDED 20% GLOSS PAINT NOTE	02/21/2020	CA	01146



ITEM NO	PART NUMBER	DESCRIPTION	QTY	REV
1	5766118	RBJ18000/25000 ARM RECEIVER TUBE	1	D
2	5735204	RBJ18000/25000 UPPER TUBE SLIDE PLATE	2	B
3	5700184	RBJ18000/25000 UPPER SCISSOR CHANNEL	1	B
4	5735207	RBJ18000/25000 ARM RECEIVER SUPPORT	2	B
5	5755117	RBJ18000/25000 SHORT UPPER TUBE SPACER	1	B
6	5731219	RBJ18000/25000 ARM RECEIVER EAR	2	B
7	5735206	RBJ18000/25000 UPPER TUBE SUPPORT	2	B
8	5736951	RBJ18000/25000 HEIGHT ADAPTER TUBE RAIL	1	A

WHERE USED
RJ-45LP

NOTE: UNLESS OTHERWISE SPECIFIED.

1. REFER TO MODEL FOR ADDITIONAL INFORMATION
2. BREAK AND DEBURR ALL SHARP EDGES 0.3mm
3. REMOVE ALL WELD SPLATTER
4. MASK BORES AND THREADS BEFORE WELDING AND PAINTING
5. DIMENSIONS SHOWN ARE AFTER PAINTING
6. PAINT BENDPAK BLACK (RAL-9017) 20% GLOSS

NEXT ASSEMBLY
5215456

DO NOT SCALE DRAWING

DIMENSIONS ARE IN MM
TOLERANCES:

0. = ±1.5
0.0 = ±0.5

SURFACE FINISH 1.6 ISO Ra µm
FOR MACHINED SURFACES
UNLESS OTHERWISE SPECIFIED

NAME DATE
DRAWN TM 11/16/2015
CHECKED OR 03/04/2020

THIRD ANGLE PROJECTION



PROPRIETARY AND CONFIDENTIAL
THE INFORMATION CONTAINED IN THIS DRAWING IS
THE SOLE PROPERTY OF BENDPAK INC. ANY
REPRODUCTION IN PART OR AS A WHOLE WITHOUT
THE WRITTEN PERMISSION OF BENDPAK INC. IS
PROHIBITED.

BendPak.

1645 LEMONWOOD DR.
SANTA PAULA, CA 93060

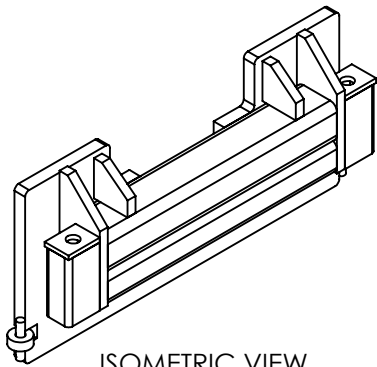
TITLE:
RBJ18000/25000 UPPER ARM
RECEIVER TUBE WELDMENT

SIZE DWG. NO. REV

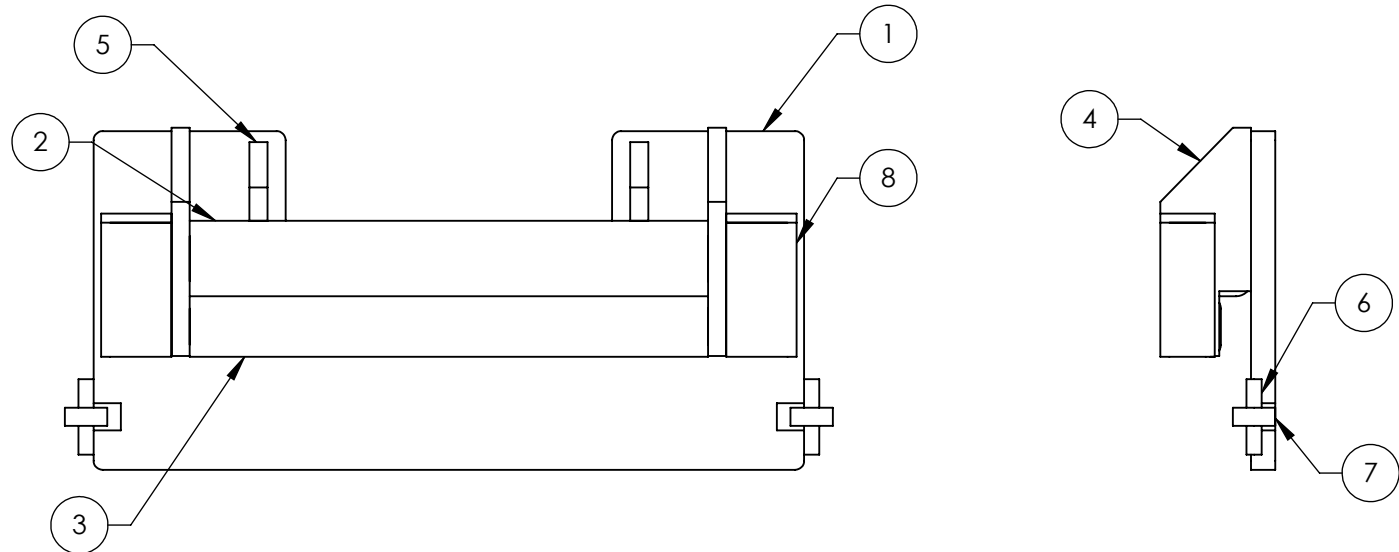
A 5601066 **B**

SCALE: 1:8

SHEET 1 OF 2



ISOMETRIC VIEW
FOR REFERENCE ONLY
DO NOT SCALE



REVISION				
REV	DESCRIPTION	DATE	EDITED BY	ECO#
B	WAS 73 NOW 82, UPDATED TITLE TO REFLECT MARKETING, UPDATED BOM REVISIONS	01/15/2016	TM	00739
C	WAS 82 NOW 74.7, REPLACED 5620347 WITH 5620416, UPDATED BOM REVISION	03/24/2016	TM	00756
D	WAS 25 PL NOW 10 PL, WAS 74.7 NOW 60, UPDATED BOM REVISION	08/06/2019	CA	01112

ITEM NO	PART NUMBER	DESCRIPTION	QTY	REV
1	5731218	RBJ BASE SIDE COVER	1	C
2	5766117	RBJ18000/25000 BASE SLIDE TUBE	1	B
3	5766114	RBJ18000/25000 BASE ARM TUBE	1	B
4	5731213	RJ-18000/25000 EXTENSION TUBE COVER	2	A
5	5731214	RBJ18000/25000 ARM EXTENSION TUBE GUSSET	2	B
6	5745056	RBJ18000/25000 CENTRALIZER ROLLER PIN	2	B
7	5746625	RBJ18000/25000 CENTRALIZER ROLLER	2	B
8	5620416	RBJ9000/15000/ 18000/25000 RAIL ROLLER CHANNEL WELDMENT	2	A

WHERE USED

RBJ18000

RBJ25000

NOTE: UNLESS OTHERWISE SPECIFIED.

- BREAK AND DEBURR ALL SHARP EDGES 0.3mm
- REMOVE ALL WELD SPLATTER
- 5746625 MUST TURN FREELY

NEXT ASSEMBLY
5600355

DO NOT SCALE DRAWING

DIMENSIONS ARE IN MM
TOLERANCES:
0. = ±1.5
0.0 = ±0.5

ANGULAR: 0. = ±2°

SURFACE FINISH 1.6 ISO Ra µm
FOR MACHINED SURFACES
UNLESS OTHERWISE SPECIFIED

NAME	DATE
DRAWN AC	01/13/2010
CHECKED CA	08/20/19

THIRD ANGLE PROJECTION



PROPRIETARY AND CONFIDENTIAL
THE INFORMATION CONTAINED IN THIS DRAWING IS
THE SOLE PROPERTY OF BENDPAK INC. ANY
REPRODUCTION IN PART OR AS A WHOLE WITHOUT
THE WRITTEN PERMISSION OF BENDPAK INC. IS
PROHIBITED.

BendPak.

1645 LEMONWOOD DR.
SANTA PAULA, CA 93060

TITLE: RBJ BASE SLIDE
SUBWELDMENT

SIZE DWG. NO.	REV
A 5620172	D

SCALE: 1:5

SHEET 1 OF 3

PART SPECIFICATION FORM STANDARD

BENDPAK Number:	5900004
MRP Description:	RBJ SERIES MANUAL
Date:	10/27/2020
ECO :	---

1. Engineering Specification

Application:

INSTALLATION MANUAL

Detailed Description:

Print Settings for BendPak Manuals

Unless otherwise specified, use these settings for printing BendPak manuals:

- **Color:** Black and white.
- **Size:** A4 (210 to 297 mm), 8.5 by 11 inches (216 to 279 mm), or between
- **Binding:** Saddle stitched
- **Paper:** 100 to 120 gsm (27 to 32 pound), uncoated



1645 Lemonwood Dr.
Santa Paula, CA 93060 USA
Toll Free: 1 (800) 253-2563
Tel: 1 (805) 933-9970
bendpak.com

Rolling Bridge Jacks

Installation and Operation Manual

Manual P/N 5900004 — Manual Revision D1 — Released October 2020

Models:

- RBJ15000
- RBJ18000
- RBJ25000



Designed and engineered by BendPak Inc. in Southern California, USA. Made in China.



Read the *entire* contents of this manual *before* using this product. Failure to follow the instructions and safety precautions in this manual can result in serious injury or death. Make sure all other operators also read this manual. Keep the manual near the product for future reference. ***By proceeding with setup and operation, you agree that you fully understand the contents of this manual and assume full responsibility for product use.***

2. Vendor Information (Or for Reference)

Approved Vendor	Vendor Part #	Contact #	Preferred Vendor
1)			
OR BENDPAK ENGINEERING APPROVED EQUIVALENT			

RBJ Series (15, 18, 25) Product Decal Positioning

A



Rolling_Jack_Service_Warning_Decal.pdf:

Size: 11"W x 1"H

Material: White Vinyl Pressure Sensitive Adhesive

Thickness: 4 Mil

Ink: U.V. protected CMYK 4/C Process

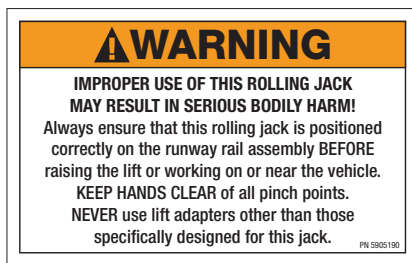
Finish: Polished

Print Process: Offset Lithography - 200 line-screen or 300 p.p.i. for digital

Lamination: Clear-gloss over-laminate for abrasion, chemical, and ultra violet protection

PN 5905552

B



PN 5905190

Warning_Improper_Use_Label.pdf:

Size: 4"W x 2.5"H

Material: White Vinyl Pressure Sensitive Adhesive

Thickness: 4 Mil

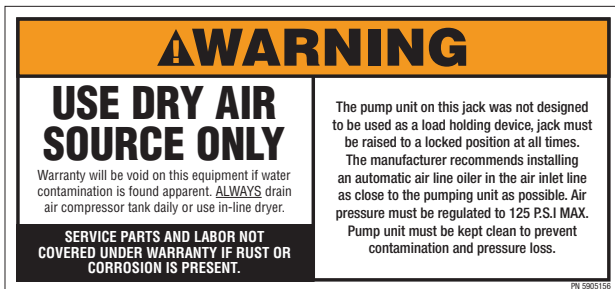
Ink: U.V. protected CMYK 2/C Process

Finish: Polished

Print Process: Offset Lithography - 200 line-screen or 300 p.p.i. for digital

Lamination: Clear-gloss over-laminate for abrasion, chemical, and ultra violet protection

C



PN 5905156

Warning_Dry_Air_Label.pdf:

Size: 7"W x 3.5"H

Material: White Vinyl Pressure Sensitive Adhesive

Thickness: 4 Mil

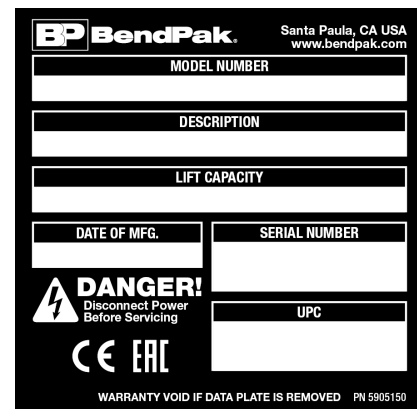
Ink: U.V. protected CMYK 2/C Process

Finish: Polished

Print Process: Offset Lithography - 200 line-screen or 300 p.p.i. for digital

Lamination: Clear-gloss over-laminate for abrasion, chemical, and ultra violet protection

D



2017_Serial_Tag-E-5905150.pdf:

PN 5905150

Size: 3"W x 3"H

Material: 2 Mil. Gloss polyester thermal transfer label with a high performance permanent acrylic adhesive.

Ink: 1 Color-Black