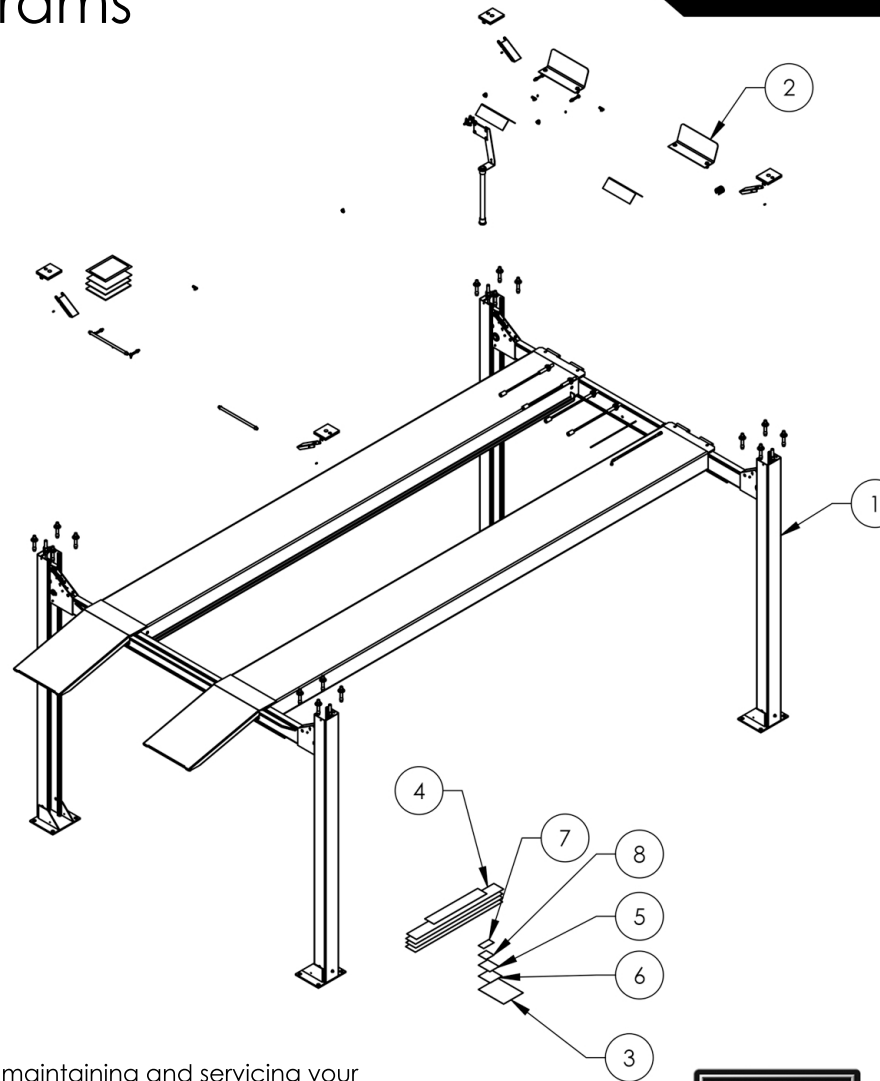


Service Manual

Service Parts & Diagrams

HD-14T

BendPak SKU 5260524
HD-14T Four Post Lift
Version E
06/02/2016



This guide is a troubleshooting reference used for maintaining and servicing your BendPak product. It provides comprehensive information on identifying serviceable parts and components and assists in troubleshooting problems and performing assembly/disassembly procedures.



BendPak, Inc. Corporate Office

1645 Lemonwood Drive
Santa Paula, CA 93060 USA
Toll Free US/Canada: 1-800-253-2363
Fax: 1-805-933-9160
info@bendpak.com

Customer Service Desk / Warranty

Customer Service Representatives
Office Tel: 1-805-933-9970
Toll Free US/Canada: 1-800-253-2363
Fax: 1-805-933-9160
customerservice@bendpak.com

Parts Orders

Customer Service Representatives
Office Tel: 1-805-933-9970
Toll Free US/Canada: 1-800-253-2363
Fax: 1-805-933-9160
parts@bendpak.com

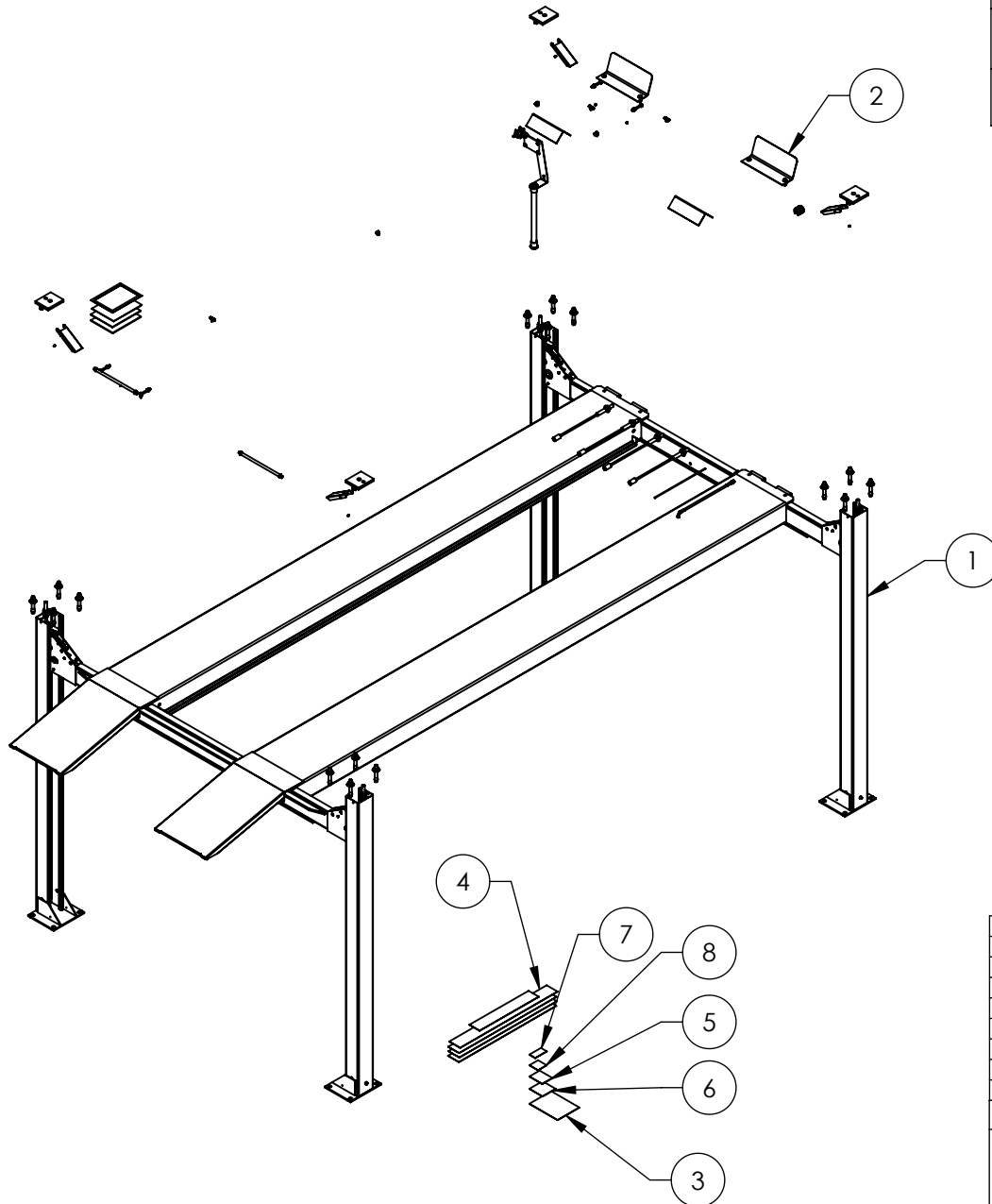
Domestic Sales & Service

USA Sales Representatives
Office Tel: 1-805-933-9970
Toll Free US/Canada: 1-800-253-2363
Fax: 1-805-933-9160
sales@bendpak.com

International Sales & Service

Office Tel: 1-805-933-9970
Exports Department: 1-805-933-9970 Ext. 192
Toll Free US/Canada: 1-800-253-2363
Fax: 1-805-933-9160
bpkexports@bendpak.com




REVISION				
REV	DESCRIPTION	DATE	EDITED BY	ECO#
B	UPDATED BOM REVISIONS	01/23/2015	MR	00675
C	ADDED 5905103, 5905200, 5905402, 5905465, 5905940, AND 5930605, UPDATED BOM REVISIONS	08/13/2015	TM	00683
D	REPLACED 5930605 WITH 5905952, REPLACED 5930605 WITH 5905557, UPDATED BOM REVISIONS	12/24/2015	JM	00741

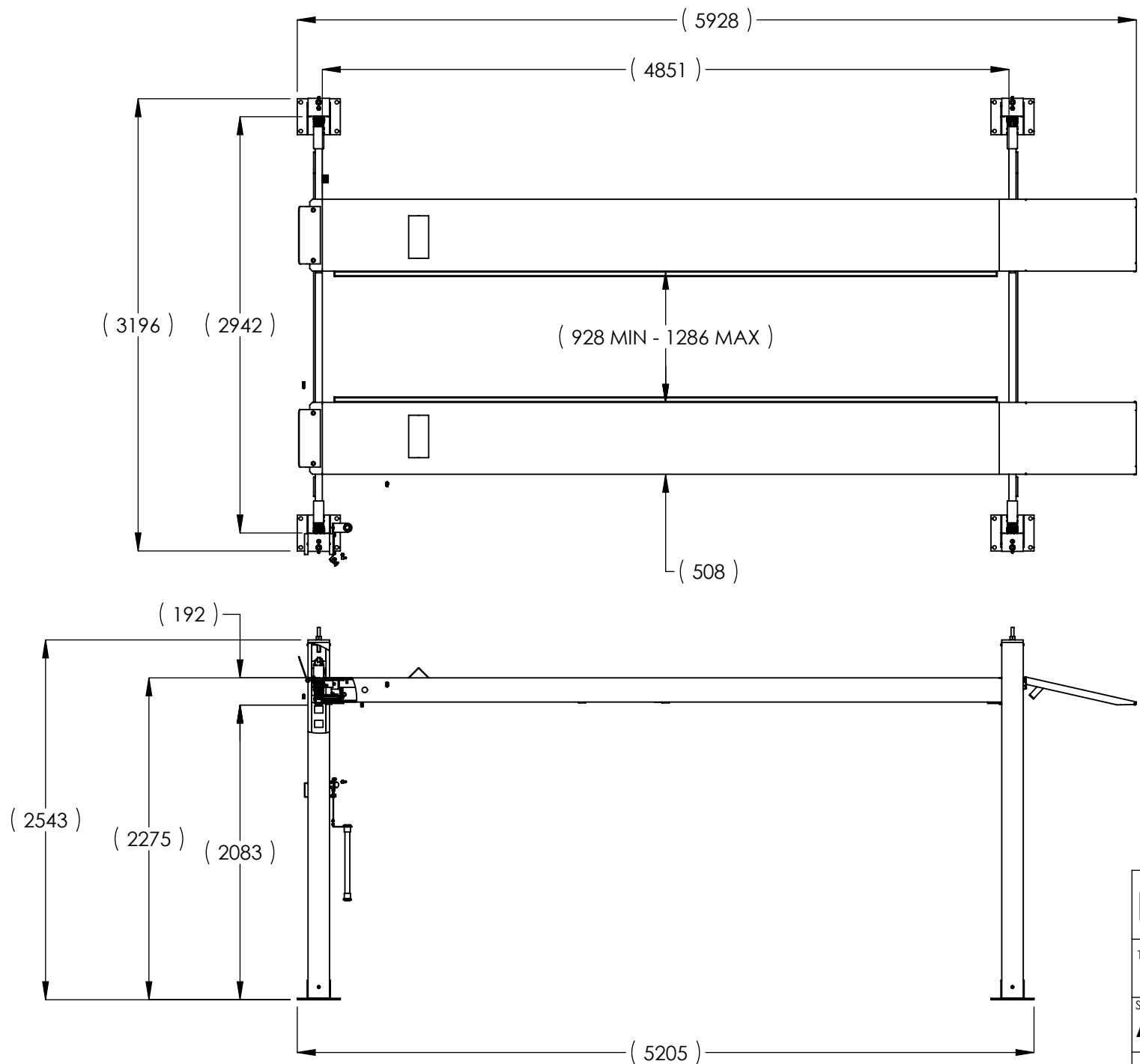



NOTE: UNLESS OTHERWISE SPECIFIED.

1. SEE SHIPPING INSTRUCTIONS FOR FINAL PACKAGING
2. ALL LABELS TO BE APPLIED TO POSTS AFTER PAINTING.
3. SEE ATTACHED LABEL PLACEMENT SHEET

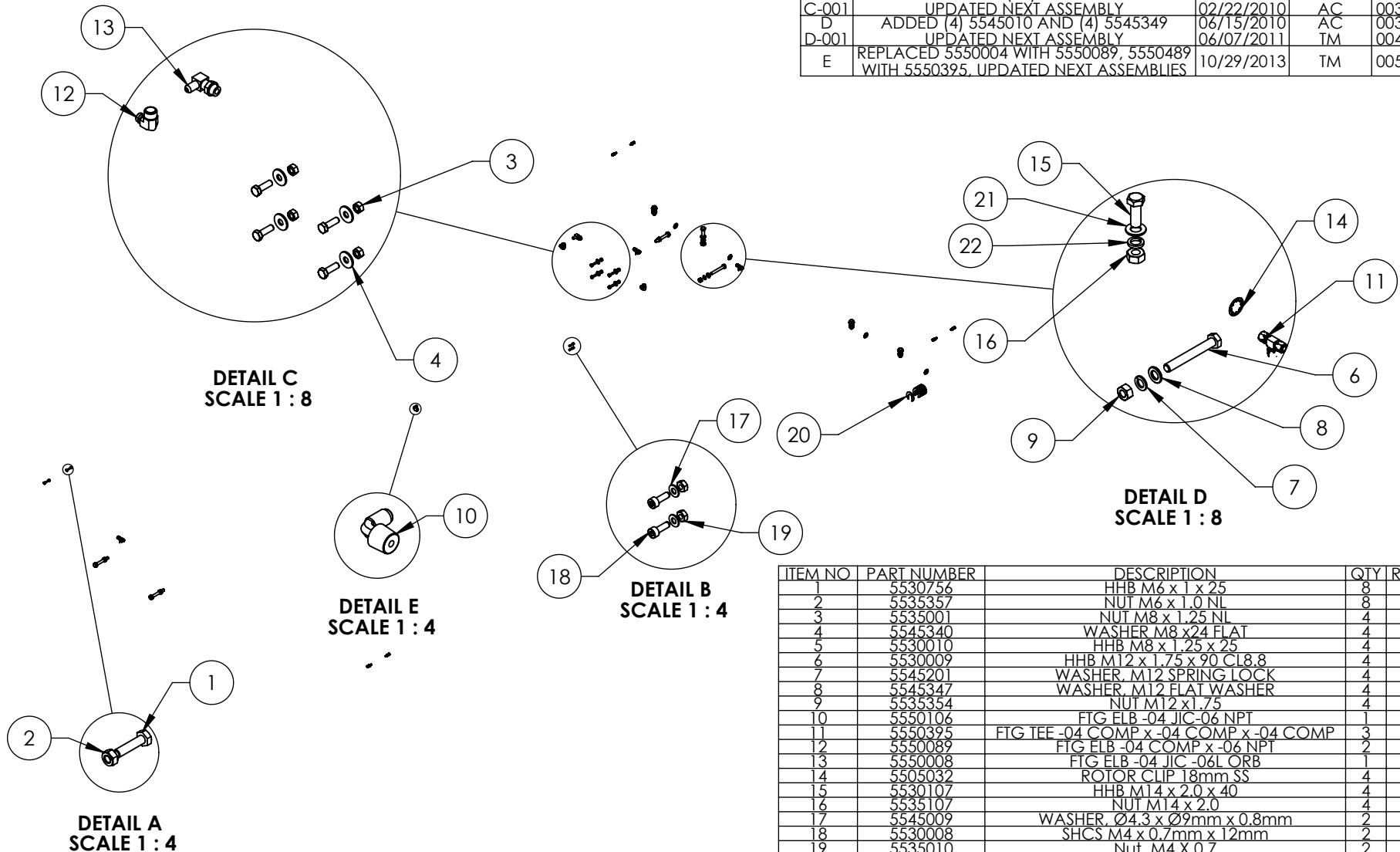
ITEM NO	PART NUMBER	DESCRIPTION	QTY	REV
1	5245387	HD-14T LIFT SUPERSTRUCTURE	1	D
2	5250191	PARTS BOX HD-14T	1	E
3	5905103	WARNING ALI/WL 200	1	--
4	5905200	4 POST DECAL KIT, LESS ALI	1	B
5	5905557	MAX CAP DANGER 14K	1	--
6	5905465	MANUFACTURER LABEL	1	--
7	5905940	PRODUCT DATA LABEL	1	--
8	5905952	SERIAL NUMBER INTERIOR TAG PLATE	1	--

DO NOT SCALE DRAWING		NAME	DATE				
DIMENSIONS ARE IN MM		DRAWN	TM	08/12/2014	 BendPak. 1645 LEMONWOOD DR. <small>MOVING AUTOMATIC SERVICE SOURCES</small> SANTA PAULA, CA 93060		
		CHECKED	-	-			
		THIRD ANGLE PROJECTION				TITLE: HD-14T PRODUCTION LIFT VER E (CE CERT)	
					SIZE DWG. NO.	REV	
		<p>PROPRIETARY AND CONFIDENTIAL THE INFORMATION CONTAINED IN THIS DRAWING IS THE SOLE PROPERTY OF BENDPAK INC. ANY REPRODUCTION IN PART OR AS A WHOLE WITHOUT THE WRITTEN PERMISSION OF BENDPAK INC. IS PROHIBITED.</p>			A	5260524	D
					SCALE: 1:50		



 BendPak. 1645 LEMONWOOD DR. <small>HOVING / AUTOMATIC BRACE SOLUTION</small> SANTA PAULA, CA 93060	
TITLE: HD-14T PRODUCTION LIFT VER E (CE CERT)	
SIZE A	DWG. NO. 5260524
SCALE: 1:40	
REV D	
SHEET 2 OF 2	

REVISION					
REV	DESCRIPTION	DATE	EDITED BY	ECO#	
C	ADDED (20) 5545535	12/22/2009	AC	00326	
C-001	UPDATED NEXT ASSEMBLY	02/22/2010	AC	00333	
D	ADDED (4) 5545010 AND (4) 5545349	06/15/2010	AC	00366	
D-001	UPDATED NEXT ASSEMBLY	06/07/2011	TM	00456	
E	REPLACED 5550004 WITH 5550089, 5550489 WITH 5550395, UPDATED NEXT ASSEMBLIES	10/29/2013	TM	00593	



ITEM NO	PART NUMBER	DESCRIPTION	QTY	REV
1	5530756	HHB M6 x 1 x 25	8	-
2	5535357	NUT M6 x 1.0 NL	8	-
3	5535001	NUT M8 x 1.25 NL	4	-
4	5545340	WASHER M8 x 24 FLAT	4	-
5	5530010	HHB M8 x 1.25 x 25	4	B
6	5530009	HHB M12 x 1.75 x 90 CL8.8	4	-
7	5545201	WASHER, M12 SPRING LOCK	4	-
8	5545347	WASHER, M12 FLAT WASHER	4	-
9	5535354	NUT M12 x 1.75	4	-
10	5550106	FTG ELB -04 JIC-06 NPT	1	-
11	5550395	FTG TEE -04 COMP x -04 COMP x -04 COMP	3	-
12	5550089	FTG ELB -04 COMP x -06 NPT	2	-
13	5550008	FTG ELB -04 JIC -06L ORB	1	-
14	5505032	ROTOR CLIP 18mm SS	4	-
15	5530107	HHB M14 x 2.0 x 40	4	-
16	5535107	NUT M14 x 2.0	4	-
17	5545009	WASHER, Ø4.3 x Ø9mm x 0.8mm	2	-
18	5530008	SHCS M4 x 0.7mm x 12mm	2	-
19	5535010	Nut, M4 X 0.7	2	-
20	5545535	C WASHER SHIM FOR LIFTS	20	-
21	5545010	WASHER M14 x 28 FLAT	4	-
22	5545349	WASHER M14 x 22 SL	4	-

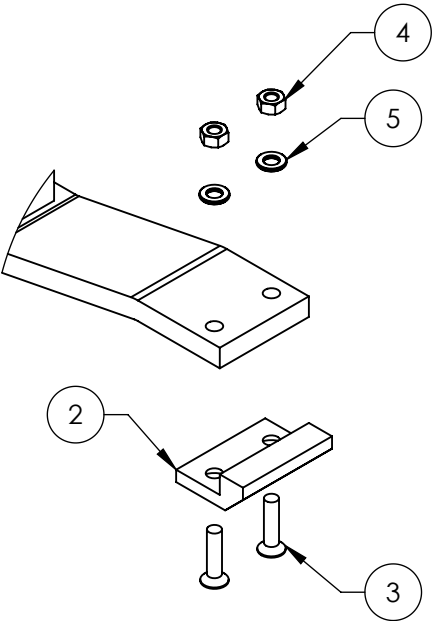
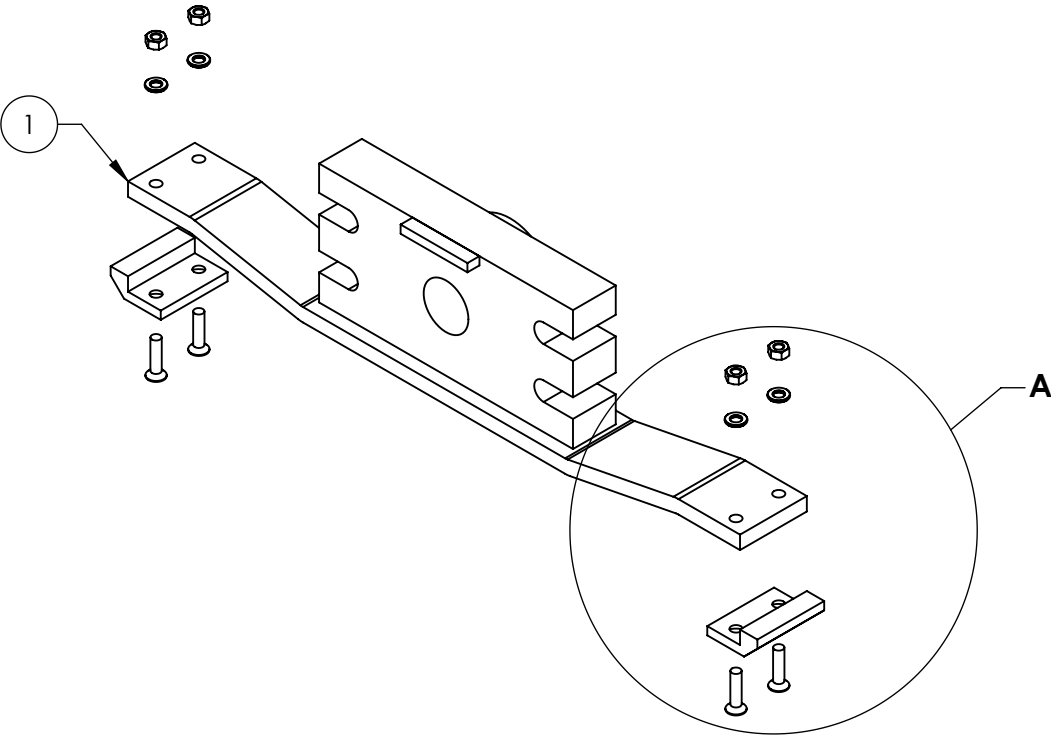
DO NOT SCALE DRAWING		NAME	DATE	1645 LEMONWOOD DR. SANTA PAULA, CA 93060
DIMENSIONS ARE IN MM		DRAWN	AC 08/08/2008	
		CHECKED		
		THIRD ANGLE PROJECTION		
MATERIAL: ---				TITLE: PARTS BAG HD/HDS-14 SERIES
SIZE: ---		PROPRIETARY AND CONFIDENTIAL THE INFORMATION CONTAINED IN THIS DRAWING IS THE SOLE PROPERTY OF BENDPAK INC. ANY REPRODUCTION IN PART OR AS A WHOLE WITHOUT THE WRITTEN PERMISSION OF BENDPAK INC. IS PROHIBITED.		SIZE DWG. NO. A 5174094 REV E
SCALE: 1:30				SHEET 1 OF 1

NOTE: UNLESS OTHERWISE SPECIFIED.

1. SEE SHIPPING INSTRUCTIONS FOR FINAL PACKAGING


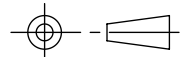

NEXT ASSEMBLY
5250143
5250144
5250191
5250194
5250195
5250196

REVISION				
REV	DESCRIPTION	DATE	EDITED BY	ECO#
D	UPDATED BOM REVISIONS	01/20/2009	AC	00266
D-001	UPDATED NEXT ASSEMBLY	03/11/2009	GJZ	00249
E	UPDATED NEXT ASSEMBLY AND BOM REVISIONS	03/08/2010	AC	00333
F	UPDATED BOM REVISION	04/23/2010	TM	00351
F-001	UPDATED NEXT ASSEMBLIES	12/07/2012	TM	00565
F-002	UPDATED NEXT ASSEMBLIES	08/04/2014	TM	00664



DETAIL A
SCALE 1 : 3

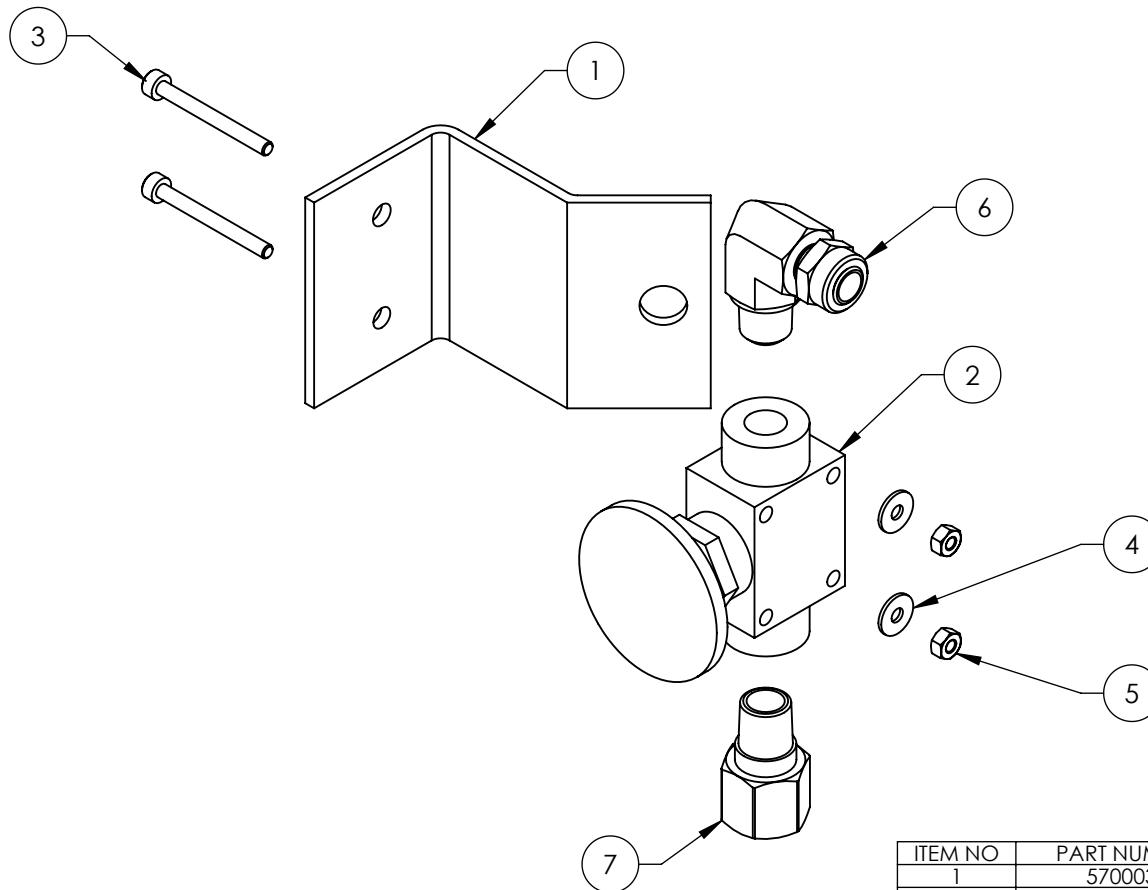
ITEM NO	PART NUMBER	DESCRIPTION	QTY	REV
1	5600079	HD-14 CYLINDER FLANGE ARM WELDMENT	1	F
2	5716006	HD-14 CYL. FLANGE ARM SLIDE	2	D
3	5530077	FHPS M6 x 1 x 25L	4	-
4	5535112	NUT M6 x 1.0	4	-
5	5545005	M6 FLAT WASHER	4	-

DO NOT SCALE DRAWING		NAME	DATE	<div> BendPak. <small>HYDRAULIC JACKING & LIFTING EQUIPMENT</small></div> <div>1645 LEMONWOOD DR. SANTA PAULA, CA 93060</div>		
DRAWN		AC	12/17/2007			
CHECKED				TITLE: HD-14 CYLINDER FLANGE ARM ASSEMBLY		
THIRD ANGLE PROJECTION						
		<p>PROPRIETARY AND CONFIDENTIAL THE INFORMATION CONTAINED IN THIS DRAWING IS THE SOLE PROPERTY OF BENDPAK INC. ANY REPRODUCTION IN PART OR AS A WHOLE WITHOUT THE WRITTEN PERMISSION OF BENDPAK INC. IS PROHIBITED.</p>		SIZE	DWG. NO.	REV
				A	5215033	G
				SCALE: 1:4		SHEET 1 OF 1



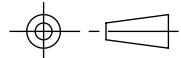
NOTE: UNLESS OTHERWISE SPECIFIED.
1. SEE SHIPPING INSTRUCTIONS FOR FINAL PACKAGING
2. ASSEMBLE ITEMS AS SHOWN

NEXT ASSEMBLY
5215203

REVISION				
REV	DESCRIPTION	DATE	EDITED BY	ECO#
D	UPDATED NEXT ASSEMBLY, ADDED 5550486	02/24/2010	AC	00333
D-001	UPDATED NEXT ASSEMBLY	01/21/2011	TM	00439
D-010	UPDATED NEXT ASSEMBLIES	07/24/2013	TM	00611
E	REPLACED 5550481 WITH 5550087	10/29/2013	TM	00593
F	REPLACED 5590240 WITH 5590175, UPDATED NEXT ASSEMBLIES	05/05/2015	MR	00683



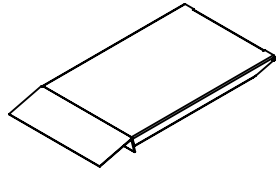
ITEM NO	PART NUMBER	DESCRIPTION	QTY	REV
1	5700031	ZERO ANGLE MTG BRACKET	1	C
2	5590175	PUSH BUTTON AIR VALVE	1	B
3	5530043	SHCS M3 x 0.5 x 30	2	-
4	5545024	WASHER M3 x 9mm	2	-
5	5535020	NUT M3 x 0.5 NL	2	-
6	5550087	FTG ELB -04 COMP x -02 NPT	1	-
7	5550486	FTG NPL -02 NPT x -04 F NPT	1	-

DO NOT SCALE DRAWING		NAME	DATE	 BendPak. 1645 LEMONWOOD DR. SANTA PAULA, CA 93060
DRAWN		AC	3/14/2008	
CHECKED		CA	09/02/2015	
DIMENSIONS ARE IN MM 		THIRD ANGLE PROJECTION		TITLE:
				PUSH BUTTON AIR ASSEMBLY
		<small>PROPRIETARY AND CONFIDENTIAL THE INFORMATION CONTAINED IN THIS DRAWING IS THE SOLE PROPERTY OF BENDPAK INC. ANY REPRODUCTION IN PART OR AS A WHOLE WITHOUT THE WRITTEN PERMISSION OF BENDPAK INC. IS PROHIBITED.</small>		SIZE DWG. NO.
		A		5215096
				REV
				F
		SCALE: 2:3		SHEET 1 OF 1

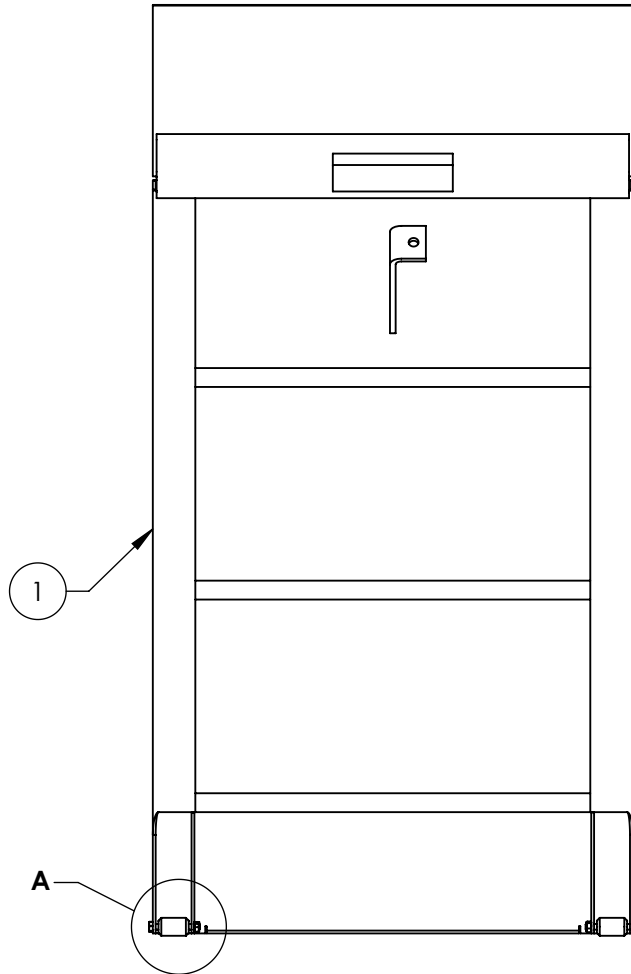
NOTE: UNLESS OTHERWISE SPECIFIED.

1. ASSEMBLE ITEMS AS SHOWN

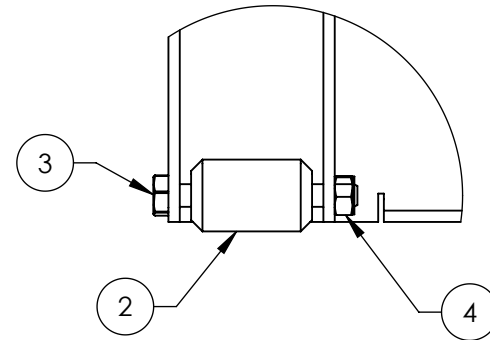
NEXT ASSEMBLY
HD/HDS/HDSO
SERIES
5250118
5250249
5250364



ISOMETRIC VIEW
FOR REFERENCE ONLY
DO NOT SCALE





		REVISION			
REV	DESCRIPTION	DATE	EDITED BY	ECO#	
E	ADDED HD/S-14 SERIES TO TITLE	10/05/2009	AC	00300	
E-001	UPDATED NEXT ASSEMBLY	02/24/2010	AC	00333	
F	REPLACED 5530064 WITH 5530097	06/03/2010	AC	00366	
G	UPDATED BOM REVISION	07/30/2010	TM	00387	
G-001	UPDATED NEXT ASSEMBLY	05/17/2011	TM	00456	
G-002	UPDATED NEXT ASSEMBLY	10/28/2011	TM	00487	
G-003	UPDATED NEXT ASSEMBLY	05/16/2013	TM	00593	
G-004	UPDATED NEXT ASSEMBLY	08/13/2014	TM	00664	



DETAIL A
SCALE 1 : 2

ITEM NO	PART NUMBER	DESCRIPTION	QTY	REV
1	5600138	HD/S-14 SERIES DRIVE UP RAMP WELDMENT	1	F
2	5716149	HD-7500/9, HD/S-14 SERIES DRIVE UP RAMP PLASTIC ROLLER	2	F
3	5530097	HHB M6 x 1.0 x 50	2	-
4	5535357	NUT M6 x 1.0 NL	2	-

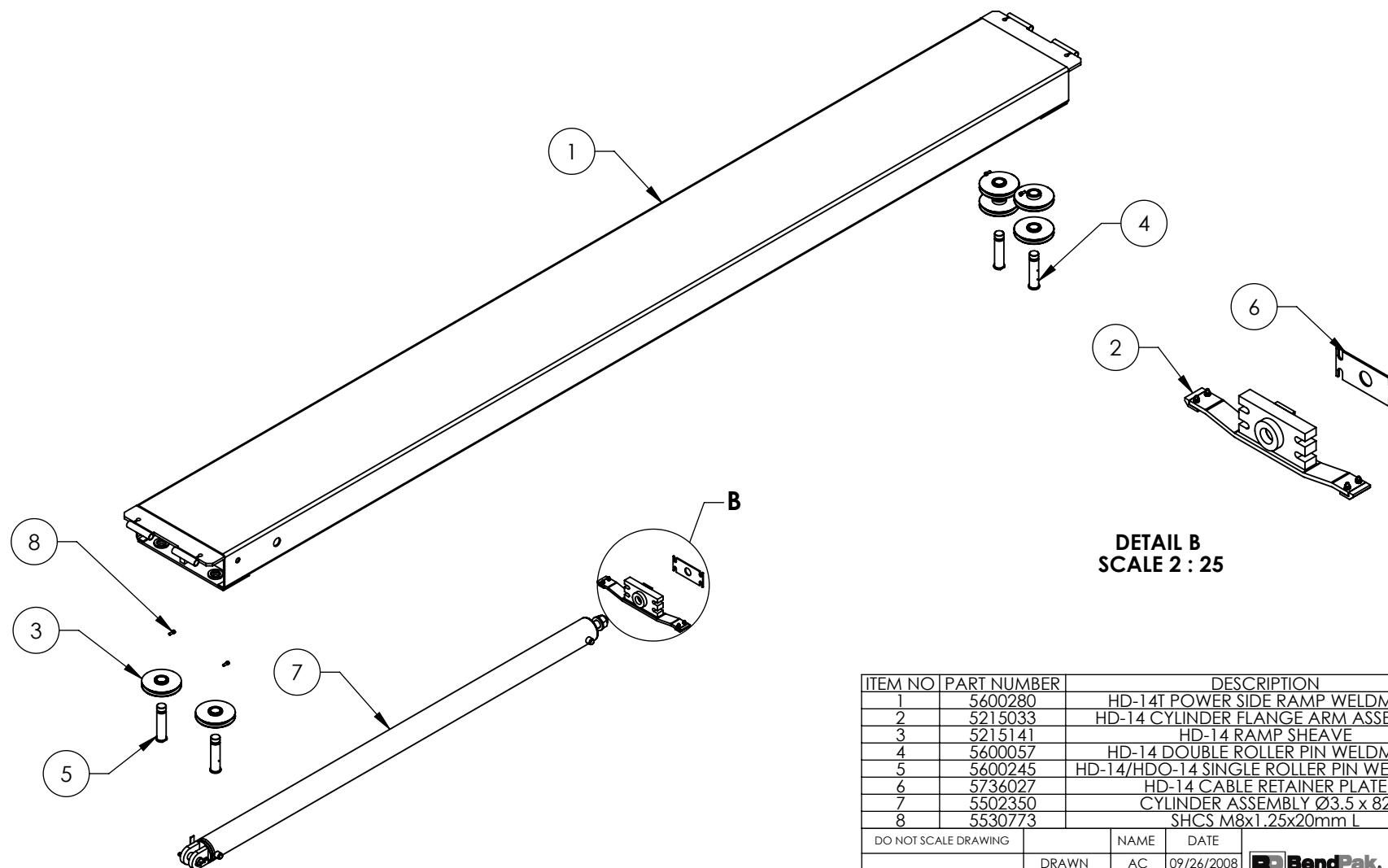
DO NOT SCALE DRAWING		NAME	DATE	<div><div> BendPak. <small>MOVING AUTOMATIC SERVICE SOLUTIONS</small></div><div>1645 LEMONWOOD DR. SANTA PAULA, CA 93060</div></div>			
DIMENSIONS ARE IN MM		DRAWN	TM			06/04/2008	
		CHECKED					
<div></div>		THIRD ANGLE PROJECTION			TITLE: HD/S-14 SERIES DRIVE UP RAMP ASSEMBLY		
		<div><p>PROPRIETARY AND CONFIDENTIAL</p><p>THE INFORMATION CONTAINED IN THIS DRAWING IS THE SOLE PROPERTY OF BENDPAK INC. ANY REPRODUCTION IN PART OR AS A WHOLE WITHOUT THE WRITTEN PERMISSION OF BENDPAK INC. IS PROHIBITED.</p></div>			SIZE	DWG. NO.	REV
					A	5215104	H
		SCALE: 1:8			SHEET 1 OF 1		

NEXT ASSEMBLY
5245397
5245398
5245399
5245400
5245401
5245402

NOTE: UNLESS OTHERWISE SPECIFIED.

1. SEE SHIPPING INSTRUCTIONS FOR FINAL PACKAGING
2. ASSEMBLE ITEMS AS SHOWN

REVISION				
REV	DESCRIPTION	DATE	EDITED BY	ECO#
M	REMOVED 5545007, 5535027 AND 5505350	01/13/2015	MR	00675
N	UPDATED BOM REVISION	04/06/2015	MR	00683
P	REMOVED (4) 5550025	01/07/2016	JM	00741







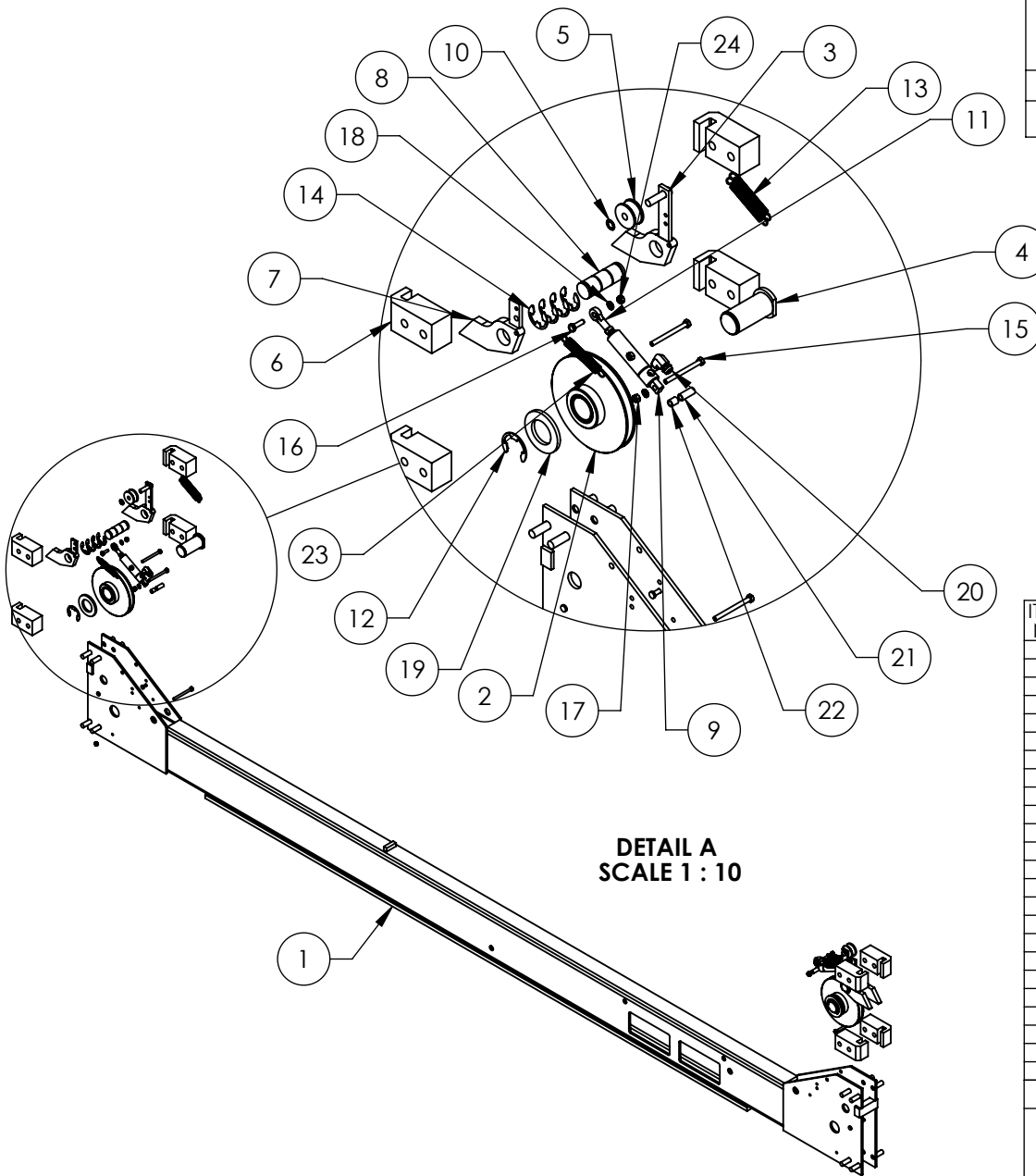
DETAIL B
SCALE 2 : 25

NOTE: UNLESS OTHERWISE SPECIFIED.

1. VERIFY CYLINDER PORTS ARE CAPPED OFF WITH STEEL 3/8" NPT PLUG.
2. SEE SHIPPING INSTRUCTIONS FOR FINAL PACKAGING.
3. ASSEMBLE ITEMS AS SHOWN.

ITEM NO	PART NUMBER	DESCRIPTION	QTY	REV
1	5600280	HD-14T POWER SIDE RAMP WELDMENT	1	D
2	5215033	HD-14 CYLINDER FLANGE ARM ASSEMBLY	1	G
3	5215141	HD-14 RAMP SHEAVE	6	B
4	5600057	HD-14 DOUBLE ROLLER PIN WELDMENT	2	F
5	5600245	HD-14/HDO-14 SINGLE ROLLER PIN WELDMENT	2	A
6	5736027	HD-14 CABLE RETAINER PLATE	1	D
7	5502350	CYLINDER ASSEMBLY Ø3.5 x 82	1	E
8	5530773	SHCS M8x1.25x20mm L	4	-

DO NOT SCALE DRAWING		NAME	DATE				
DIMENSIONS ARE IN MM 		DRAWN	AC	09/26/2008	 BendPak. 1645 LEMONWOOD DR. <small>MOVING AUTOMATIC SERVICE SOLUTIONS</small> SANTA PAULA, CA 93060		
		CHECKED	-	-			
		THIRD ANGLE PROJECTION 			TITLE: HD-14T POWER SIDE RAMP ASSEMBLY		
		PROPRIETARY AND CONFIDENTIAL THE INFORMATION CONTAINED IN THIS DRAWING IS THE SOLE PROPERTY OF BENDPAK INC. ANY REPRODUCTION IN PART OR AS A WHOLE WITHOUT THE WRITTEN PERMISSION OF BENDPAK INC. IS PROHIBITED.			SIZE DWG. NO.	REV	
					A	5215203	P
					SCALE: 1:25		SHEET 1 OF 2



NOTE: UNLESS OTHERWISE SPECIFIED.

1. GREASE PINS PRIOR TO ASSEMBLY
2. ASSEMBLE ITEMS AS SHOWN

NEXT ASSEMBLY
5245387

REVISION				
REV	DESCRIPTION	DATE	EDITED BY	ECO#
D	REPLACED 5700034 WITH 5716632, REPLACED (2) 5540065 WITH 5540070, REMOVED 5530694 & 5535357, UPDATED BOM REVISION AND NEXT ASSEMBLY	01/23/2015	MR	00675
E	REPLACED 5545026 WITH 5545005	03/20/2015	MR	00683
F	REMOVED (2) 5550025 AND (2) 5716632 UPDATED BOM REVISIONS	12/28/2015	JM	00741

ITEM NO	PART NUMBER	DESCRIPTION	QTY	REV
1	5600058	HD-14 CROSSTUBE WELDMENT, LARGE WINDOW	1	K
2	5215142	HD-14 CROSSTUBE SHEAVE	2	B
3	5600044	HD/HDS LIGHT DUTY SERIES SLACK SAFETY WELDMENT	2	F
4	5600173	HD/S/O-14 SHEAVE PIN WELDMENT	2	G
5	5575380	HD/HDS/HDO/HDSO-14 SERIES SAFETY ROLLER	2	C
6	5716005	HD-7/7500/9/14/HDSO-14 PLASTIC SLIDE BLOCK	8	J
7	5600760	HD/HDS LIGHT DUTY SERIES SAFETY WELDMENT	2	B
8	5746008	HD/HDS-7/7500/9/14, HDSO-14 SAFETY PIN	2	E
9	5502195	AIR CYLINDER, Ø19mm x 25 STROKE	2	--
10	5505030	ROTOR CLIP 10mm SS	2	--
11	5505625	FEMALE ROD END M6 x 33mm	2	--
12	5540002	E RING Ø1.375" OD TRUARC X5133-137	2	--
13	5540065	SPRING Ø13mm x 90mm, SLACK SAFETY	4	A
14	5540275	E RING Ø25mm OD DIN 6799 0250	8	--
15	5530005	HHB M6 x 1 x 70	6	--
16	5530093	HHB M6 x 1 x 20	2	--
17	5535112	NUT M6 x 1.0	4	--
18	5545005	M6 FLAT WASHER	4	--
19	5545032	WASHER M36 x 66 FLAT	2	--
20	5550087	FTG ELB -04 COMP x -02 NPT	2	--
21	5755137	HD AIR CYLINDER SPACER 25mm	2	B
22	5755136	HD AIR CYLINDER SPACER 12mm	2	B
23	5540070	SPRING Ø13mm x 89mm, AIR CYLINDER	2	B
24	5535357	NUT M6 x 1.0 NL	4	--

DO NOT SCALE DRAWING

DIMENSIONS ARE IN MM

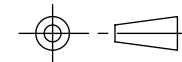


NAME DATE

DRAWN SH 04/16/2013

CHECKED CA 09/01/2015

THIRD ANGLE PROJECTION



PROPRIETARY AND CONFIDENTIAL
THE INFORMATION CONTAINED IN THIS DRAWING IS THE SOLE PROPERTY OF BENDPAK INC. ANY REPRODUCTION IN PART OR AS A WHOLE WITHOUT THE WRITTEN PERMISSION OF BENDPAK INC. IS PROHIBITED.

BendPak. 1645 LEMONWOOD DR.
SANTA PAULA, CA 93060

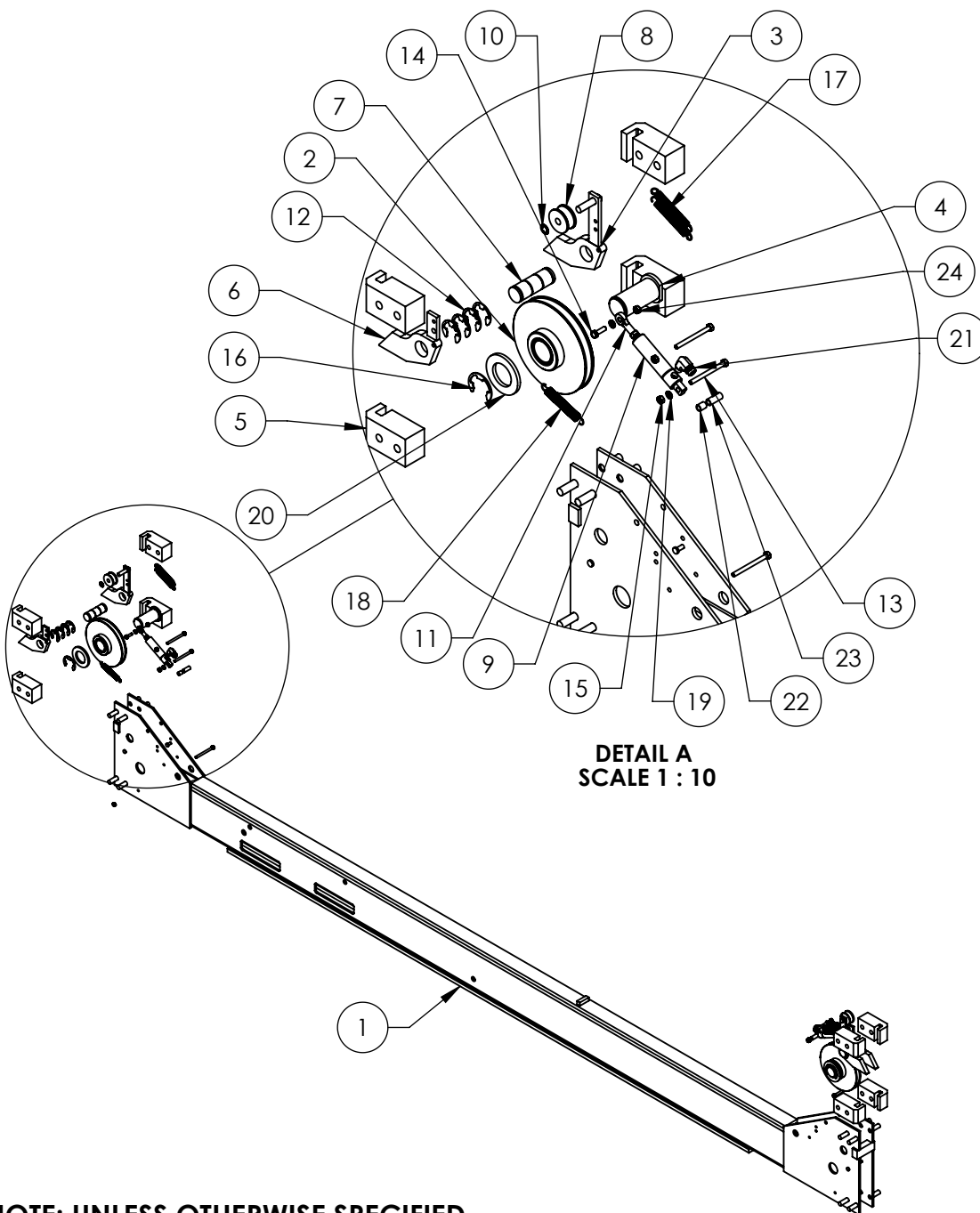
TITLE: HD-14 CROSSTUBE
ASSEMBLY, LARGE WINDOW

SIZE DWG. NO. REV

A 5215595 F

SCALE: 1:20

SHEET 1 OF 1



DETAIL A
SCALE 1 : 10

NOTE: UNLESS OTHERWISE SPECIFIED.

1. GREASE PINS PRIOR TO ASSEMBLY
2. ASSEMBLE ITEMS AS SHOWN

NEXT ASSEMBLY
5245387

REVISION				
REV	DESCRIPTION	DATE	EDITED BY	ECO#
D	REMOVED (4) OF 5545005 ADDED (2) 5545026 AND REVERSED DIRECTION OF ROD END BOLT 5530093	01/23/2015	MR	00675
E	REPLACED 5545026 WITH 5545005	03/20/2015	MR	00683
F	REMOVED (2) 5550025 AND 5716632 UPDATED BOM REVISIONS	12/28/2015	JM	00741

ITEM NO.	PART NUMBER	DESCRIPTION	QTY	REV
1	5600054	HD-14 CROSSTUBE WELDMENT, SMALL WINDOW	1	K
2	5215142	HD-14 CROSSTUBE SHEAVE	2	B
3	5600044	HD/HDS LIGHT DUTY SERIES SLACK SAFETY WELDMENT	2	F
4	5600173	HD/S/O-14 SHEAVE PIN WELDMENT	2	G
5	5716005	HD-7/7500/9/14/HDSO-14 PLASTIC SLIDE BLOCK	8	J
6	5600760	HD/HDS LIGHT DUTY SERIES SAFETY WELDMENT	2	B
7	5746008	HD/HDS-7/7500/9/14, HDSO-14 SAFETY PIN	2	E
8	5575380	HD/HDS/HDO/HDSO-14 SERIES SAFETY ROLLER	2	C
9	5502195	AIR CYLINDER, Ø19mm x 25 STROKE	2	-
10	5505030	ROTOR CLIP 10mm SS	2	-
11	5505625	FEMALE ROD END M6 x 33mm	2	-
12	5540275	E RING Ø25mm OD DIN 6799 0250	8	-
13	5530005	HHB M6 x 1 x 70	6	-
14	5530093	HHB M6 x 1 x 20	2	-
15	5535112	NUT M6 x 1.0	2	-
16	5540002	E RING Ø1.375" OD TRUARC X5133-137	2	-
17	5540065	SPRING Ø13mm x 90mm, SLACK SAFETY	4	A
18	5540070	SPRING Ø13mm x 89mm, AIR CYLINDER	2	B
19	5545005	M6 FLAT WASHER	4	-
20	5545032	WASHER M36 x 66 FLAT	2	-
21	5550087	FTG ELB -04 COMP x -02 NPT	2	-
22	5755136	HD AIR CYLINDER SPACER 12mm	2	B
23	5755137	HD AIR CYLINDER SPACER 25mm	2	B
24	5535357	NUT M6 x 1.0 NL	6	-

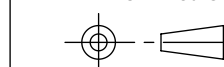
DO NOT SCALE DRAWING

NAME	DATE
DRAWN SH	04/16/2013
CHECKED -	-

BendPak 1645 LEMONWOOD DR.
SANTA PAULA, CA 93060

DIMENSIONS ARE IN MM

THIRD ANGLE PROJECTION



TITLE: HD-14 CROSSTUBE
ASSEMBLY, SMALL WINDOW

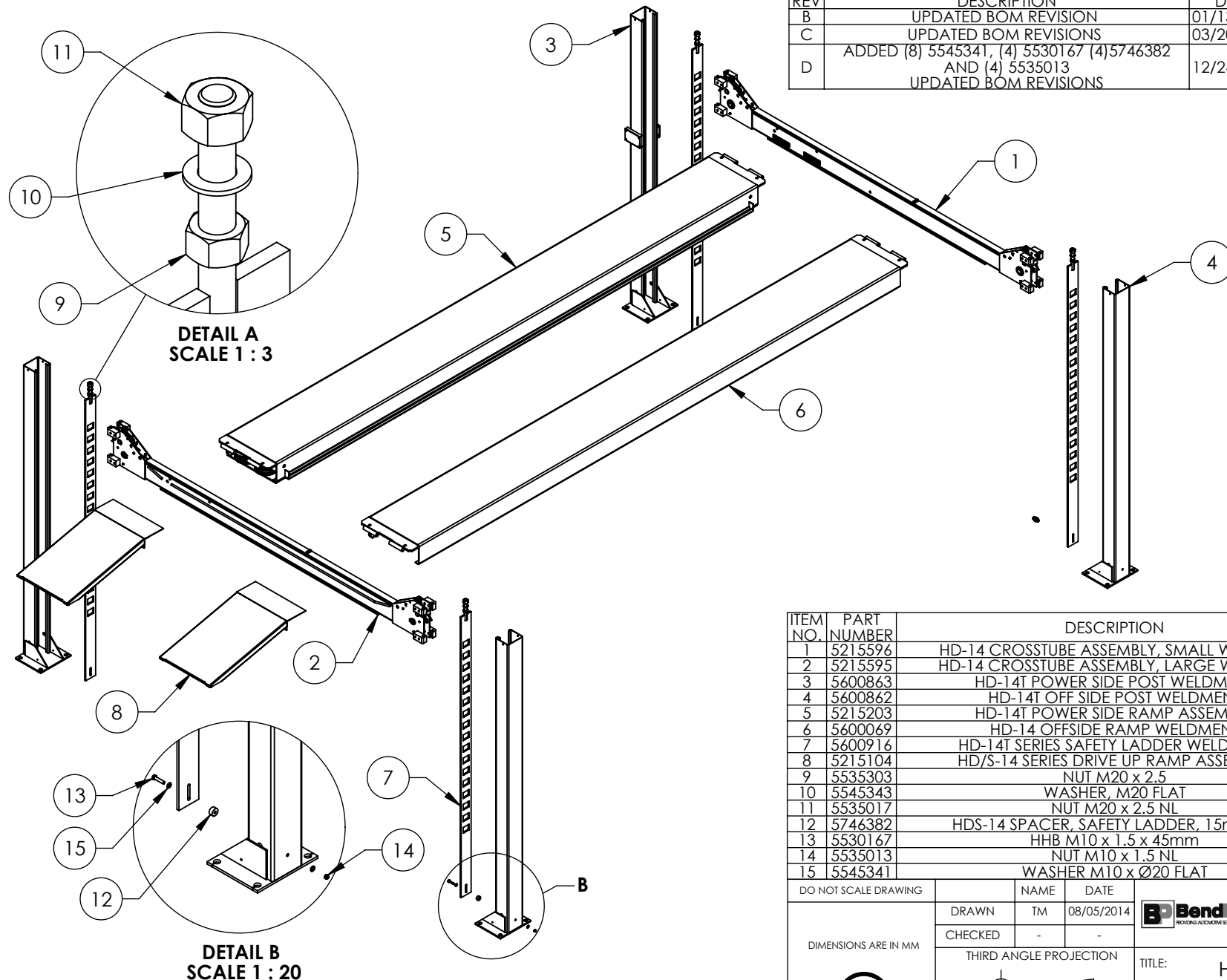
SIZE DWG. NO.	REV
A 5215596	F

SCALE: 1:20

SHEET 1 OF 1

PROPRIETARY AND CONFIDENTIAL
THE INFORMATION CONTAINED IN THIS DRAWING IS
THE SOLE PROPERTY OF BENDPAK INC. ANY
REPRODUCTION IN PART OR AS A WHOLE WITHOUT
THE WRITTEN PERMISSION OF BENDPAK INC. IS
PROHIBITED.

REVISION				
REV	DESCRIPTION	DATE	EDITED BY	ECO#
B	UPDATED BOM REVISION	01/13/2015	MR	00675
C	UPDATED BOM REVISIONS	03/20/2015	MR	00683
D	ADDED (8) 5545341, (4) 5530167 (4) 5746382 AND (4) 5535013 UPDATED BOM REVISIONS	12/24/2015	JM	00741



NOTE: UNLESS OTHERWISE SPECIFIED.

- SEE SHIPPING INSTRUCTIONS FOR FINAL PACKAGING
- THREAD M20 HARDWARE ONTO LADDER BOLTS AS SHOWN

NEXT ASSEMBLY
5260524

ITEM NO.	PART NUMBER	DESCRIPTION	QTY.	REV
1	5215596	HD-14 CROSSTUBE ASSEMBLY, SMALL WINDOW	1	F
2	5215595	HD-14 CROSSTUBE ASSEMBLY, LARGE WINDOW	1	F
3	5600863	HD-14T POWER SIDE POST WELDMENT	1	C
4	5600862	HD-14T OFF SIDE POST WELDMENT	3	C
5	5215203	HD-14T POWER SIDE RAMP ASSEMBLY	1	P
6	5600069	HD-14 OFFSIDE RAMP WELDMENT	1	G
7	5600916	HD-14T SERIES SAFETY LADDER WELDMENT	4	B
8	5215104	HD/S-14 SERIES DRIVE UP RAMP ASSEMBLY	2	H
9	5535303	NUT M20 x 2.5	4	-
10	5545343	WASHER, M20 FLAT	4	-
11	5535017	NUT M20 x 2.5 NL	4	-
12	5746382	HDS-14 SPACER, SAFETY LADDER, 15mm LG	4	A
13	5530167	HHB M10 x 1.5 x 45mm	4	-
14	5535013	NUT M10 x 1.5 NL	4	-
15	5545341	WASHER M10 x Ø20 FLAT	8	-

DO NOT SCALE DRAWING

DIMENSIONS ARE IN MM

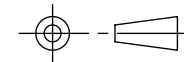


NAME DATE

DRAWN TM 08/05/2014

CHECKED - -

THIRD ANGLE PROJECTION



PROPRIETARY AND CONFIDENTIAL
THE INFORMATION CONTAINED IN THIS DRAWING IS
THE SOLE PROPERTY OF BENDPAK INC. ANY
REPRODUCTION IN PART OR AS A WHOLE WITHOUT
THE WRITTEN PERMISSION OF BENDPAK INC. IS
PROHIBITED.

BendPak 1645 LEMONWOOD DR.
SANTA PAULA, CA 93060

TITLE: HD-14T LIFT
SUPERSTRUCTURE

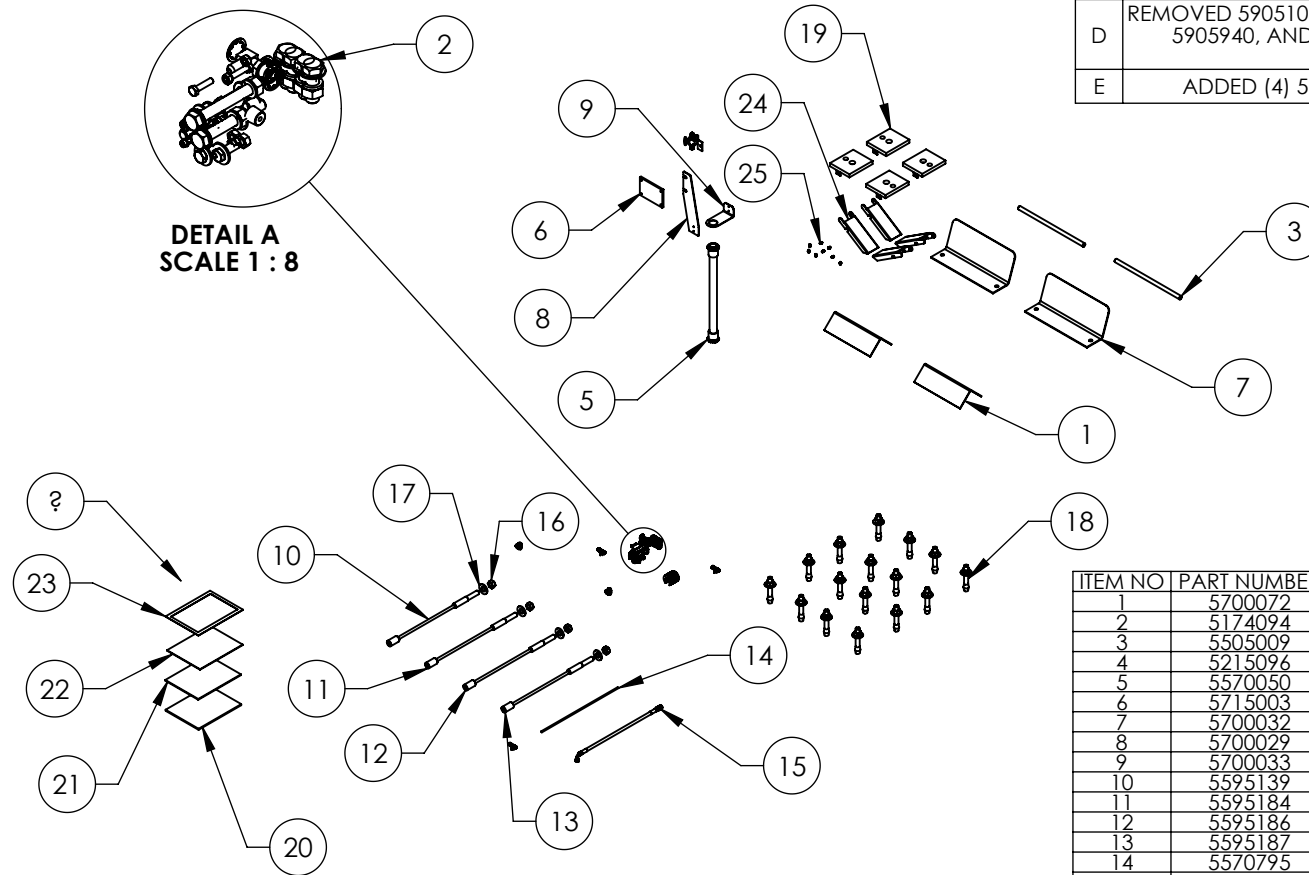
SIZE DWG. NO. REV

A 5245387 D

SCALE: 1:40

SHEET 1 OF 1

REVISION				
REV	DESCRIPTION	DATE	EDITED BY	ECO#
C	REMOVED 5701730, 5530093 5535112, 5900153 AND 5215637, UPDATED NEXT ASSEMBLY	08/08/2014	TM	00664
D	REMOVED 5905103, 5905200, 5905402, 5905465, 5905940, AND 5930605, UPDATED BOM REVISION	08/13/2015	TM	00683
E	ADDED (4) 5716629 AND (8) 5550025	01/07/2016	JM	00741



ITEM NO	PART NUMBER	DESCRIPTION	QTY.	REV
1	5700072	WHEEL CHOCK	2	A
2	5174094	PARTS BAG HD/HDS-14 SERIES	1	E
3	5505009	HD/HDS-14 DRIVE UP RAMP PIN	2	D
4	5215096	PUSH BUTTON AIR ASSEMBLY	1	F
5	5570050	FLEX TUBE ASSEMBLY 1320mm	1	B
6	5715003	POWER UNIT VIBRATION DAMPENERS	1	B
7	5700032	TIRE STOP	2	B
8	5700029	HD-SERIES FLEX TUBE BRACKET PLATE	1	F
9	5700033	HD-SERIES FLEX TUBE ANGLE	1	E
10	5595139	HD-14T CABLE ASSY Ø12 x 3665mm ST	1	B
11	5595184	HD-14T CABLE ASSY Ø12 x 5270mm ST	1	B
12	5595186	HD-14T CABLE ASSY Ø12 x 8590mm ST	1	B
13	5595187	HD-14T CABLE ASSY Ø12 x 10190mm ST	1	B
14	5570795	1/4" POLY-FLO TUBING	20000mm*	-
15	5570025	HD-14T HYD. HOSE ASSEMBLY Ø6.4 x 3685mm	1	D
16	5535011	NUT M22 x 2.5 NL	4	-
17	5545345	WASHER M22 x 50mm FLAT	4	B
18	5530456	AB 3/4" x 4 - 3/4"	16	-
19	5600406	HD-14T/HDS-14 TOP PLATE WELDMENT	4	B
20	5900037	HD-14 INSTALLATION MANUAL	1	-
21	5900147	SAFETY MANUAL ALI / SM 93-1	1	-
22	5900152	ALIGN OIM OPERATION INSPECTION & MAINTENANCE	1	-
23	5905151	SAFETY TIPS CARD ALL-ST 90	1	-
24	5716632	HD-14 CROSSTUBE COVER, PLASTIC	4	A
25	5550025	FTG.GRS M6x1	8	PRE

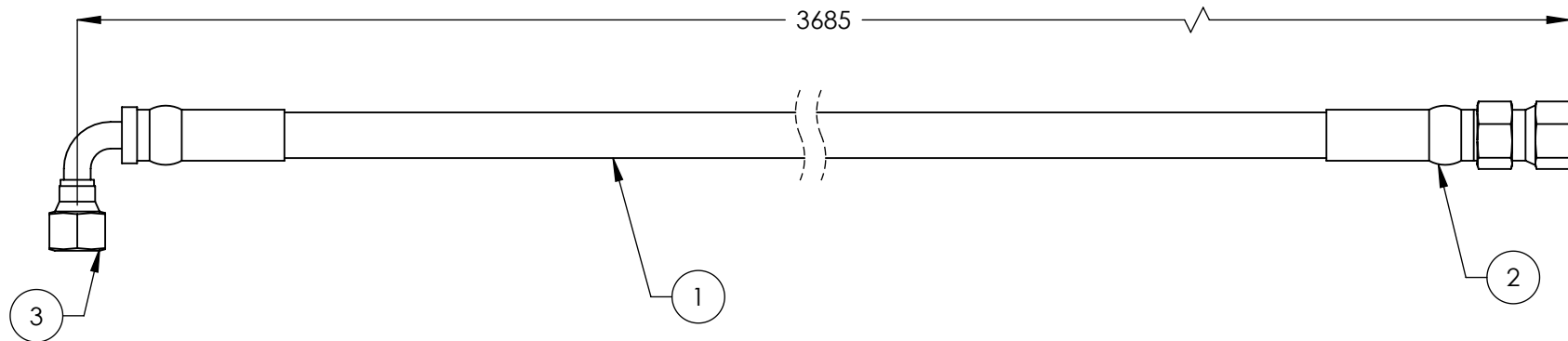
NOTE: UNLESS OTHERWISE SPECIFIED.

- SEE SHIPPING INSTRUCTIONS FOR FINAL PACKAGING
- INSERT PARTS BAG INTO PARTS BOX FOR SHIPMENT
- THREAD 5535011 WITH 5545345 ONTO CABLES FOR SHIPMENT
- HOSES AND CABLES IN REPRESENTATIONAL FORM
- (*) LENGTH FOR REFERENCE ONLY


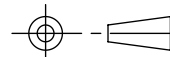
NEXT ASSEMBLY
5260524

DO NOT SCALE DRAWING		NAME	DATE	1645 LEMONWOOD DR. SANTA PAULA, CA 93060
DIMENSIONS ARE IN MM		DRAWN	TM 05/09/2013	
		CHECKED	CA 08/31/2015	
		THIRD ANGLE PROJECTION		TITLE:
				PARTS BOX HD-14T
				SIZE DWG. NO.
				REV
		PROPRIETARY AND CONFIDENTIAL THE INFORMATION CONTAINED IN THIS DRAWING IS THE SOLE PROPERTY OF BENDPAK INC. ANY REPRODUCTION IN PART OR AS A WHOLE WITHOUT THE WRITTEN PERMISSION OF BENDPAK INC. IS PROHIBITED.		E
		SCALE: 1:35		SHEET 1 OF 1

REVISION				
REV	DESCRIPTION	DATE	EDITED BY	ECO#
B	UPDATED TITLE TO REFLECT WHERE USED UPDATED NEXT ASSEMBLY	02/24/2010	AC	00333
C	UPDATED TITLE TO REFLECT WHERE USED UPDATED NEXT ASSEMBLY	04/23/2010	AC	00342
C-001	UPDATED NEXT ASSEMBLY	05/22/2013	TM	00593
D	REPLACED 5570110 WITH 5570129 AND UPDATED TITLE TO REFLECT WHERE USED	06/08/2015	TM	00683



ITEM NO.	PART NUMBER	DESCRIPTION		QTY.	REV
1	5570129	Ø6.4 ID HYDRAULIC HOSE		3630mm*	-
2	5550325	FTG NPL Ø1/4 CRIMP x -04 JIC		1	-
3	5550345	FTG ELB Ø1/4 CRIMP x -04 JIC		1	-

DO NOT SCALE DRAWING		NAME	DATE	 BendPak. 1645 LEMONWOOD DR. SANTA PAULA, CA 93061	
		DRAWN	AC		
DIMENSIONS ARE IN MM TOLERANCES: 0. = ±1.5 0.0 = ±0.5 ANGULAR: 0. = ±2° SURFACE FINISH 1.6 ISO Ra µm FOR MACHINED SURFACES UNLESS OTHERWISE SPECIFIED		CHECKED	CA	08/27/2015	
		THIRD ANGLE PROJECTION			TITLE: HD-14T HYD. HOSE ASSEMBLY Ø6.4 x 3685mm
					
		PROPRIETARY AND CONFIDENTIAL THE INFORMATION CONTAINED IN THIS DRAWING IS THE SOLE PROPERTY OF BENDPAK INC. ANY REPRODUCTION IN PART OR AS A WHOLE WITHOUT THE WRITTEN PERMISSION OF BENDPAK INC. IS PROHIBITED.			SIZE DWG. NO. A 5570025
					REV D
		SCALE: 1:2			SHEET 1 OF 1

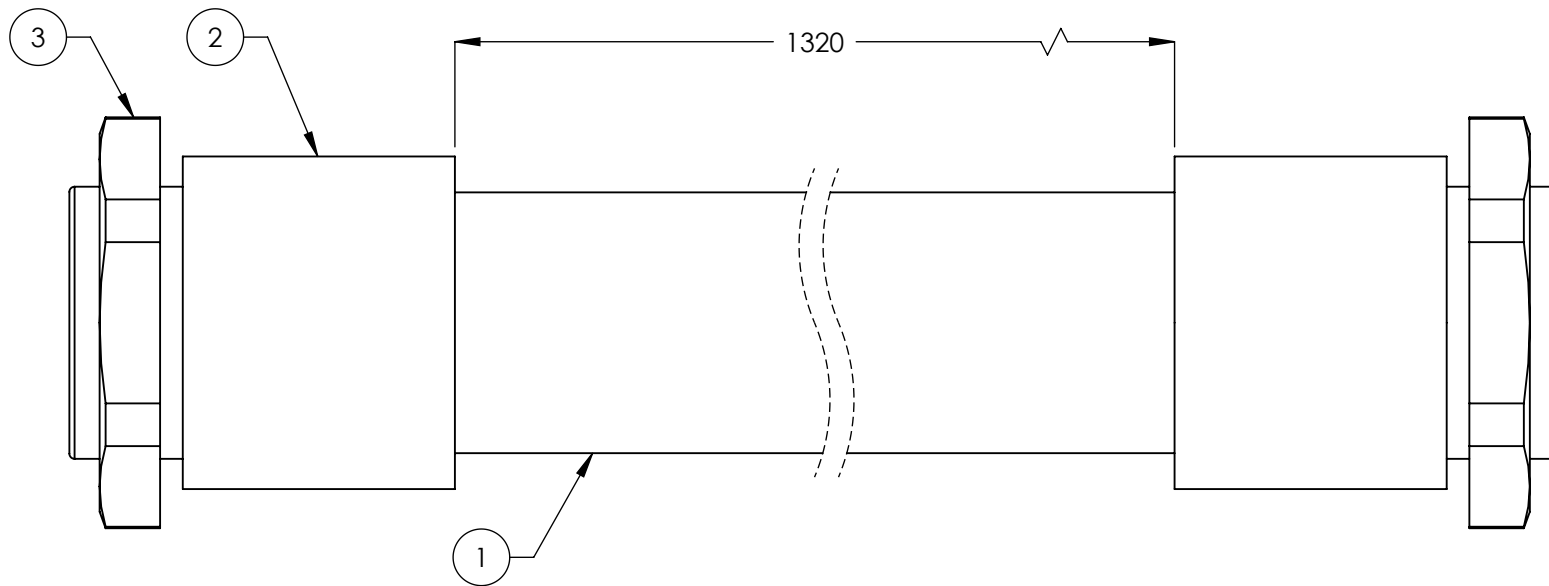
NOTE: UNLESS OTHERWISE SPECIFIED.

- FOR ITEM 1 SPECIFICATIONS REFER TO PART SPECIFICATION FORM
- ITEM 1 QTY FOR REFERENCE ONLY


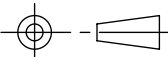
NEXT ASSEMBLY
5250191
5250250

PROPRIETARY AND CONFIDENTIAL
THE INFORMATION CONTAINED IN THIS DRAWING IS
THE SOLE PROPERTY OF BENDPAK INC. ANY
REPRODUCTION IN PART OR AS A WHOLE WITHOUT
THE WRITTEN PERMISSION OF BENDPAK INC. IS
PROHIBITED.

REVISION		DATE	EDITED BY	ECO#
REV.	DESCRIPTION			
A	PRODUCTION RELEASE	12/24/2007	AC	00104
A-001	CHANGED SURFACE FINISH FROM 3.2 μm TO 1.6 $\text{Ra } \mu\text{m}$	09/05/2008	GJ	00237
A-002	UPDATED NEXT ASSEMBLY	10/02/2008	AC	00140
B	UPDATE TUBE TO NEW STYLE, UPDATED NEXT ASSEMBLY AND TITLE	12/11/2008	AC	00256
B-001	UPDATED NEXT ASSEMBLY	05/04/2009	AC	00277
B-013	UPDATED NEXT ASSEMBLIES	05/17/2013	TM	00593



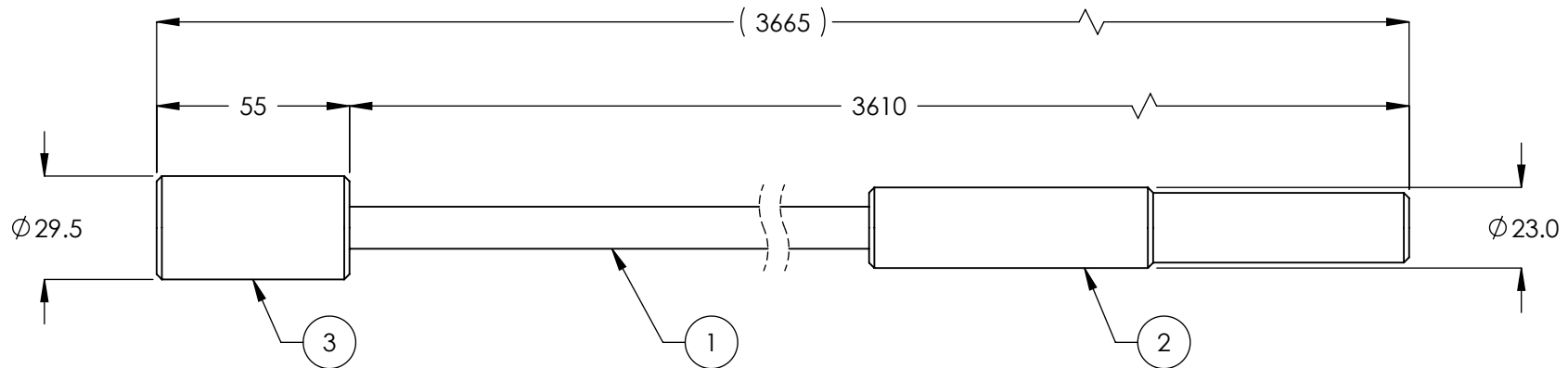
ITEM NO	PART NUMBER	DESCRIPTION	QTY.	REV
1	5570053	PE FLEX TUBE $\varnothing 34.5 \times \varnothing 29$	1386mm*	-
2	5555555	WQG1-M36/AD34.5 CONNECTOR	2	-
3	5535050	PLASTIC NUT M36 x 2	2	-

DO NOT SCALE DRAWING		NAME		DATE		 BendPak. <small>POWERING AUTOMOTIVE SERVICE SOLUTIONS</small>		1645 LEMONWOOD DR. SANTA PAULA, CA 93060	
DIMENSIONS ARE IN MM TOLERANCES: 0. = ±1.5 0.0 = ±1.0 0.00 = ±0.25 0.000 = ±0.13 ANGULAR: MACH ±2° SURFACE FINISH 1.6 ISO Ra μm FOR MACHINED SURFACES UNLESS OTHERWISE SPECIFIED MATERIAL:		DRAWN		AC		12/24/2007		<div>TITLE:</div> <div>FLEX TUBE ASSEMBLY 1320mm</div>	
		CHECKED							
		THIRD ANGLE PROJECTION							
									
		PROPRIETARY AND CONFIDENTIAL							
		THE INFORMATION CONTAINED IN THIS DRAWING IS THE SOLE PROPERTY OF BENDPAK INC. ANY REPRODUCTION IN PART OR AS A WHOLE WITHOUT THE WRITTEN PERMISSION OF BENDPAK INC. IS PROHIBITED.							
SIZE:						SIZE DWG. NO.		REV	
Y						A 5570050		B	
						SCALE: 1:1		SHEET 1 OF 1	

NOTE: UNLESS OTHERWISE SPECIFIED.

- FOR ITEM 1 SPECIFICATIONS REFER TO PART SPECIFICATION FORM
- (*)ITEM 1 QTY FOR REFERENCE ONLY

		REVISION			
REV.	DESCRIPTION	DATE	EDITED BY	ECO #	
A	PRODUCTION RELEASE	09/29/2008	AC	00140	
A-001	UPDATED NEXT ASSEMBLY	02/24/2010	AC	00333	
B	UPDATED TITLE TO DENOTE SINGLE THREADED END	06/09/2010	AC	00366	
B-001	UPDATED NEXT ASSEMBLY	05/22/2013	TM	00593	


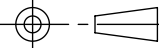


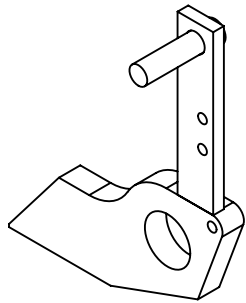
NOTE: UNLESS OTHERWISE SPECIFIED.

1. FOR ITEM 1 SPECIFICATIONS REFER TO PART SPECIFICATION FORM
2. LENGTH SHOWN IS AFTER SWAGING
3. (*)ITEM 1 QTY FOR REFERENCE ONLY

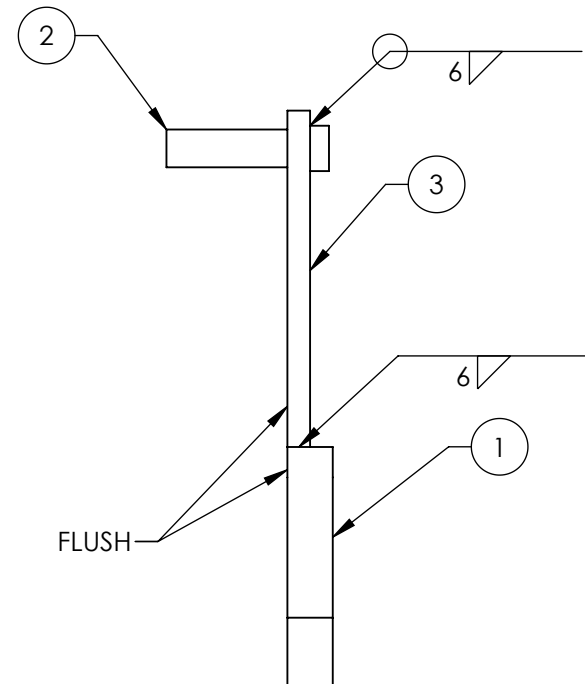
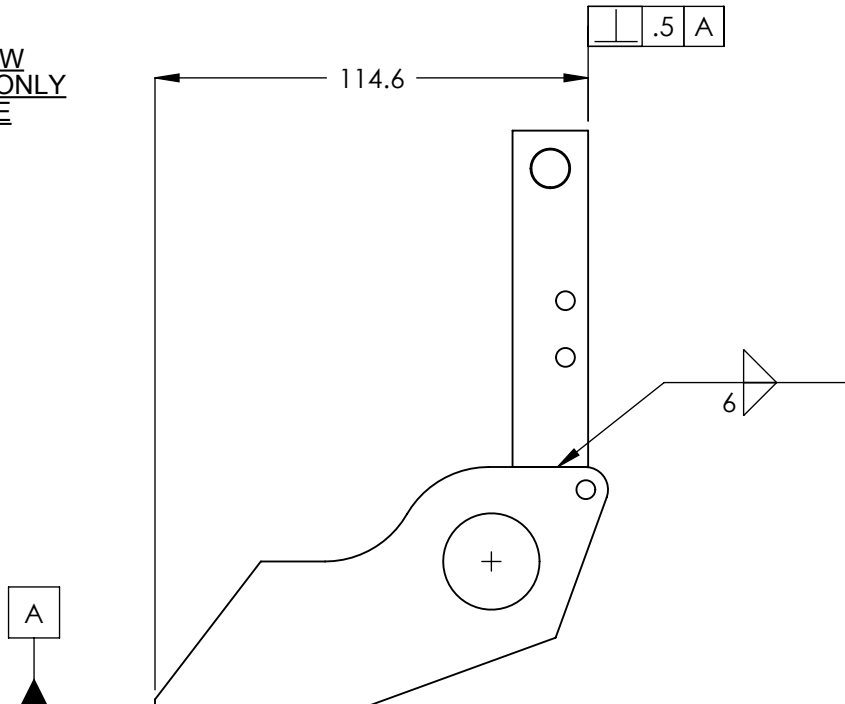
NEXT ASSEMBLY
5250191

ITEM NO.	PART NUMBER	DESCRIPTION		QTY.	REV
1	5595001	CABLE LIFTING Ø12		3583mm*	-
2	5746020	Ø12 THREADED CABLE CONNECTOR		1	D
3	5746019	Ø12 CABLE END CONNECTOR		1	D

DO NOT SCALE DRAWING	NAME	DATE	 BendPak. <small>POWERING AUTOMOTIVE SERVICE EQUIPMENT</small>	1645 LEMONWOOD DR. SANTA PAULA, CA 93060	
DIMENSIONS ARE IN MM	DRAWN	AC		Ø12 CABLE ASSY	
TOLERANCES: 0. = ±1.5 0.0 = ±0.5	CHECKED	09/29/2008		Ø12 x 3665mm ST	
ANGULAR: 0. = ±2°	THIRD ANGLE PROJECTION			TITLE:	
SURFACE FINISH 1.6 ISO Ra µm FOR MACHINED SURFACES UNLESS OTHERWISE SPECIFIED				SIZE DWG. NO.	
MATERIAL: --	PROPRIETARY AND CONFIDENTIAL THE INFORMATION CONTAINED IN THIS DRAWING IS THE SOLE PROPERTY OF BENDPAK INC. ANY REPRODUCTION IN PART OR AS A WHOLE WITHOUT THE WRITTEN PERMISSION OF BENDPAK INC. IS PROHIBITED.			REV	
SIZE: --				A 5595139 B	
				SCALE: 1:2	
					SHEET 1 OF 1



ISOMETRIC VIEW
FOR REFERENCE ONLY
DO NOT SCALE



REV	DESCRIPTION	DATE	EDITED BY	ECO#
C	UPDATED TITLE TO REFLECT WHERE USED UPDATED BOM REVISION	02/26/2010	AC	00333
D	UPDATED TITLE TO REFLECT WHERE USED, UPDATED BOM REVISIONS, UPDATED NEXT ASSEMBLY	06/04/2010	AC	00366
D-001	UPDATED NEXT ASSEMBLY	01/20/2011	TM	00439
D-002	UPDATED FINISH CALLOUT, WAS PAINT BLUE NOW ZINC PLATE	07/05/2011	TM	00469
D-003	UPDATED NEXT ASSEMBLIES	12/28/2011	TM	00487
D-004	UPDATED NEXT ASSEMBLIES	11/19/2012	TM	00562
E	UPDATED BOM REVISION, NEXT ASSEMBLIES AND TITLE	04/23/2013	TM	00593
E-001	UPDATED NEXT ASSEMBLY	10/16/2013	TM	00630
E-002	UPDATED NEXT ASSEMBLIES	02/05/2014	TM	00593 E&O
E-003	UPDATED NEXT ASSEMBLY	08/13/2014	TM	00664

NOTE: UNLESS OTHERWISE SPECIFIED.

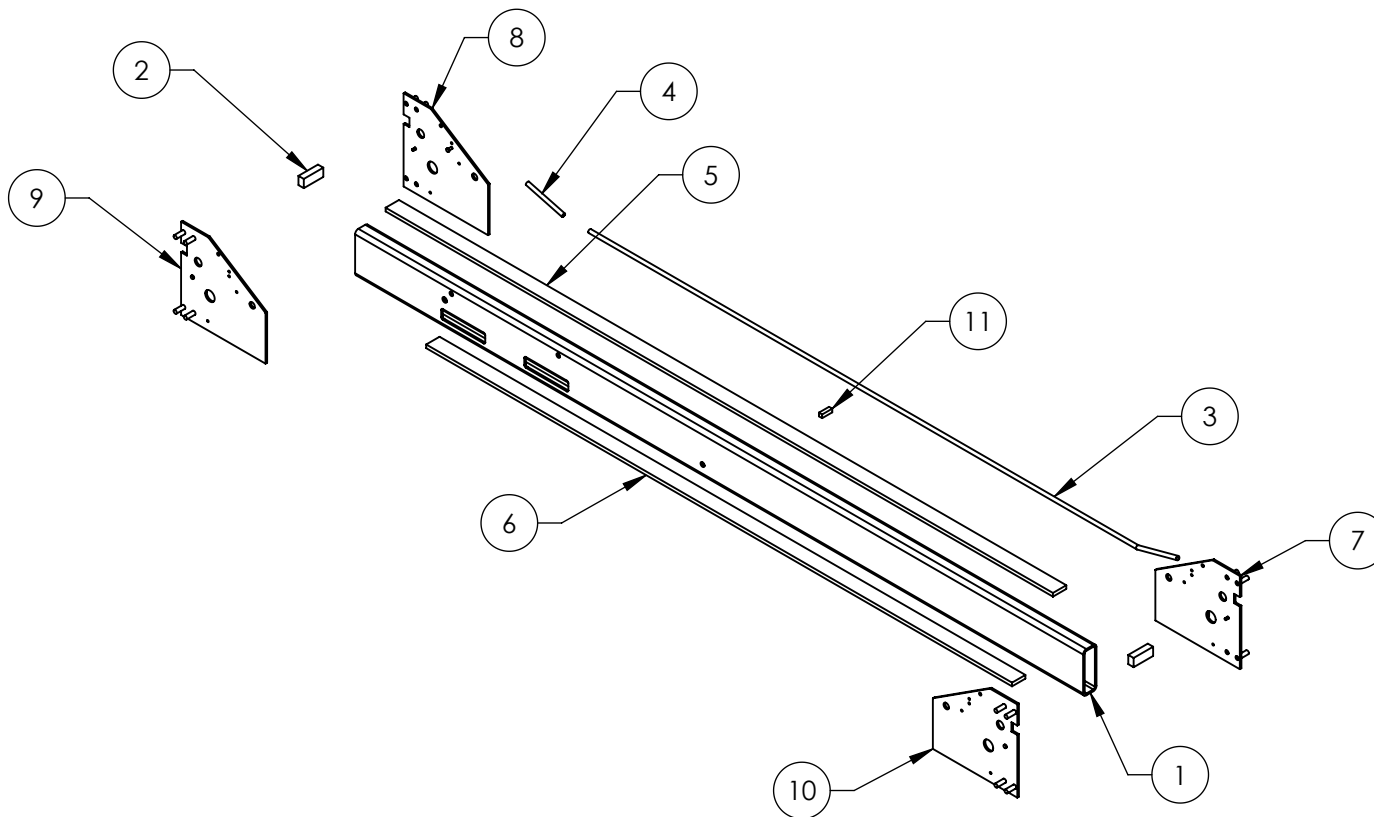
- BREAK AND DEBURR ALL SHARP EDGES 0.3mm
- REMOVE ALL WELD SPLATTER
- DIMENSIONS SHOWN ARE AFTER PLATING
- FINISH ZINC PLATE AS PER ASTM B633 TYPE 3 SC 2

NEXT ASSEMBLY	
5215595	5215617
5215596	5215619
5215597	5215620
5215601	5215621
5215602	5215622
5215603	5215623
5215605	5215624
5215612	5215625
5215613	5215636
5215616	5215663

ITEM NO	PART NUMBER	DESCRIPTION	QTY	REV
1	5736024	HD/S/O-777500/9/14 SERIES SAFETY	1	E
2	5746013	HD/S/O-777500/9/12/14 SLACK SAFETY PIN	1	D
3	5736031	HD/HDS LIGHT DUTY SERIES SLACK SAFETY ARM PLATE	1	E
DO NOT SCALE DRAWING		NAME	DATE	
		DRAWN	GJZ	10/23/2007
		CHECKED		
		THIRD ANGLE PROJECTION		
		DIMENSIONS ARE IN MM TOLERANCES: 0. = ±1.5 0.0 = ±0.5 ANGULAR: 0. = ±2° SURFACE FINISH 1.6 ISO Ra μm FOR MACHINED SURFACES UNLESS OTHERWISE SPECIFIED		
		PROPRIETARY AND CONFIDENTIAL THE INFORMATION CONTAINED IN THIS DRAWING IS THE SOLE PROPERTY OF BENDPAK INC. ANY REPRODUCTION IN PART OR AS A WHOLE WITHOUT THE WRITTEN PERMISSION OF BENDPAK INC. IS PROHIBITED.		
		TITLE: HD/HDS LIGHT DUTY SERIES SLACK SAFETY WELDMENT		
		SIZE	DWG. NO.	REV
		A	5600044	F
		SCALE: 1:2		SHEET 1 OF 1

1645 LEMONWOOD DR.
SANTA PAULA, CA 93060

REVISION				
REV	DESCRIPTION	DATE	EDITED BY	ECO#
J	UPDATED BOM REVISIONS AND NEXT ASSEMBLY	04/24/2013	TM	00593
K	UPDATED BOM REVISION	03/27/2014	TM	00648



ITEM NO	PART NUMBER	DESCRIPTION	QTY	REV
1	5766006	HD-14 CROSSTUBE FRONT	1	D
2	5735027	CROSSTUBE SAFETY BLOCK	2	C
3	5755010	AIR SAFETY TROUGH	1	C
4	5755011	SMALL AIR SAFETY TROUGH	1	C
5	5735023	HD-14 SERIES TOP CROSS TUBE STRAP	1	E
6	5735039	HD/HDSO-14 BOTTOM CROSS TUBE STRAP	1	E
7	5620190	HD-14 CROSS TUBE END PLATE #1 WELDMENT	1	E
8	5620191	HD-14 CROSSTUBE END PLATE #2 WELDMENT	1	E
9	5620192	HD-14 CROSSTUBE END PLATE #3 WELDMENT	1	E
10	5620193	HD-14 CROSSTUBE END PLATE #4 WELDMENT	1	E
11	5760003	HD-12/14 RAMP STOP	1	D

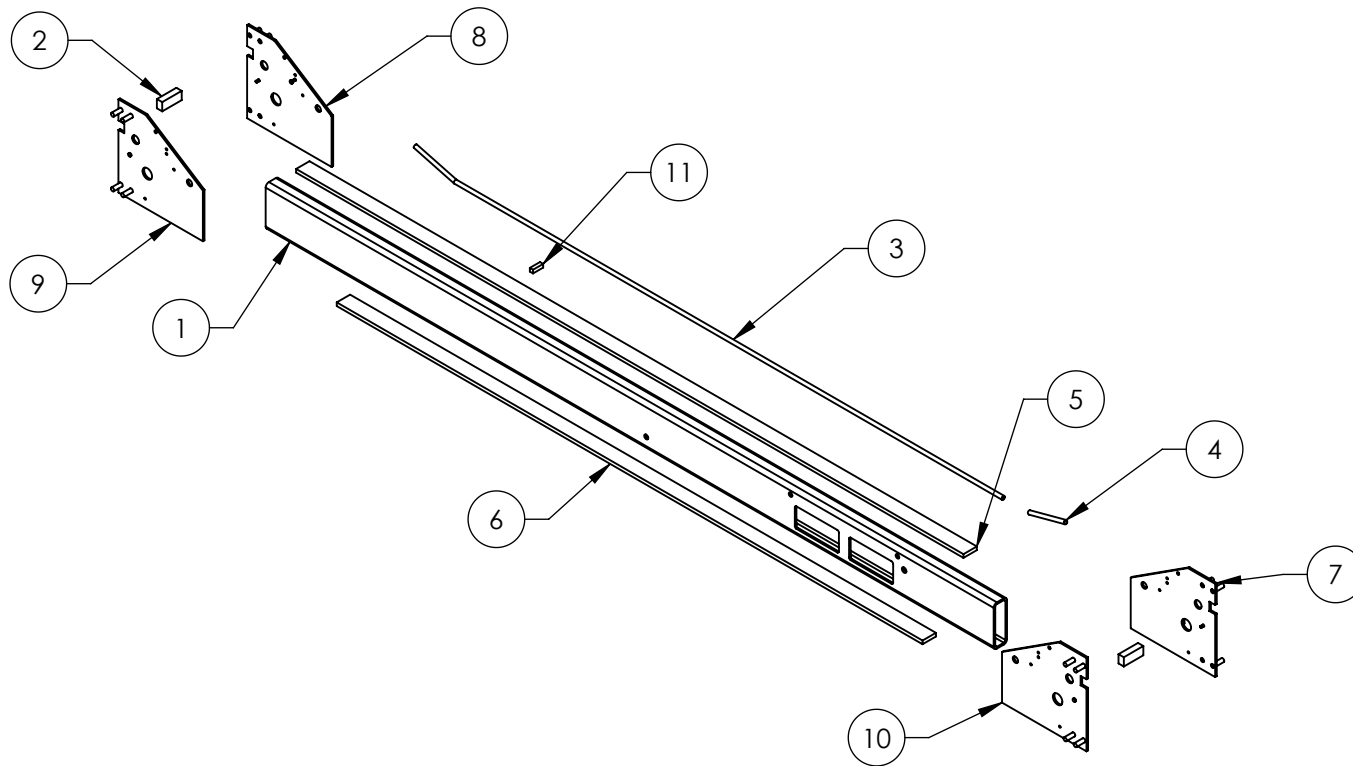
DO NOT SCALE DRAWING		NAME	DATE
DRAWN		AC	12/06/2007
CHECKED			
THIRD ANGLE PROJECTION			
DIMENSIONS ARE IN MM TOLERANCES: 0. = ±1.5 0.0 = ±0.5 ANGULAR: 0. = ±2° SURFACE FINISH 1.6 ISO Ra µm FOR MACHINED SURFACES UNLESS OTHERWISE SPECIFIED		BendPak 1645 LEMONWOOD DR. SANTA PAULA, CA 93060 TITLE: HD-14 CROSSTUBE WELDMENT, SMALL WINDOW SIZE DWG. NO. 5600054 REV K	
PROPRIETARY AND CONFIDENTIAL THE INFORMATION CONTAINED IN THIS DRAWING IS THE SOLE PROPERTY OF BENDPAK INC. ANY REPRODUCTION IN PART OR AS A WHOLE WITHOUT THE WRITTEN PERMISSION OF BENDPAK INC. IS PROHIBITED.		SCALE: 1:20 SHEET 1 OF 2	

NOTE: UNLESS OTHERWISE SPECIFIED.

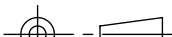
- BREAK AND DEBURR ALL SHARP EDGES 0.3mm
- REMOVE ALL WELD SPLATTER
- PAINT BENDPAK BLUE

NEXT ASSEMBLY
5215596

REVISION				
REV	DESCRIPTION	DATE	EDITED BY	ECO#
J	UPDATED BOM REVISIONS AND NEXT ASSEMBLY	04/24/2013	TM	00593
K	UPDATED BOM REVISION	03/27/2014	TM	00648



ITEM NO	PART NUMBER	DESCRIPTION	QTY	REV
1	5766007	HD-14 CROSSTUBE, LARGE WINDOW	1	E
2	5735027	CROSSTUBE SAFETY BLOCK	2	C
3	5755010	AIR SAFETY TROUGH	1	C
4	5755011	SMALL AIR SAFETY TROUGH	1	C
5	5735023	HD-14 SERIES TOP CROSS TUBE STRAP	1	F
6	5735039	HD/HDSO-14 BOTTOM CROSS TUBE STRAP	1	F
7	5620190	HD-14 CROSS TUBE END PLATE #1 WELDMENT	1	F
8	5620191	HD-14 CROSS TUBE END PLATE #2 WELDMENT	1	F
9	5620192	HD-14 CROSS TUBE END PLATE #3 WELDMENT	1	D
10	5620193	HD-14 CROSS TUBE END PLATE #4 WELDMENT	1	F
11	5760003	HD-12/14 RAMP STOP	1	D

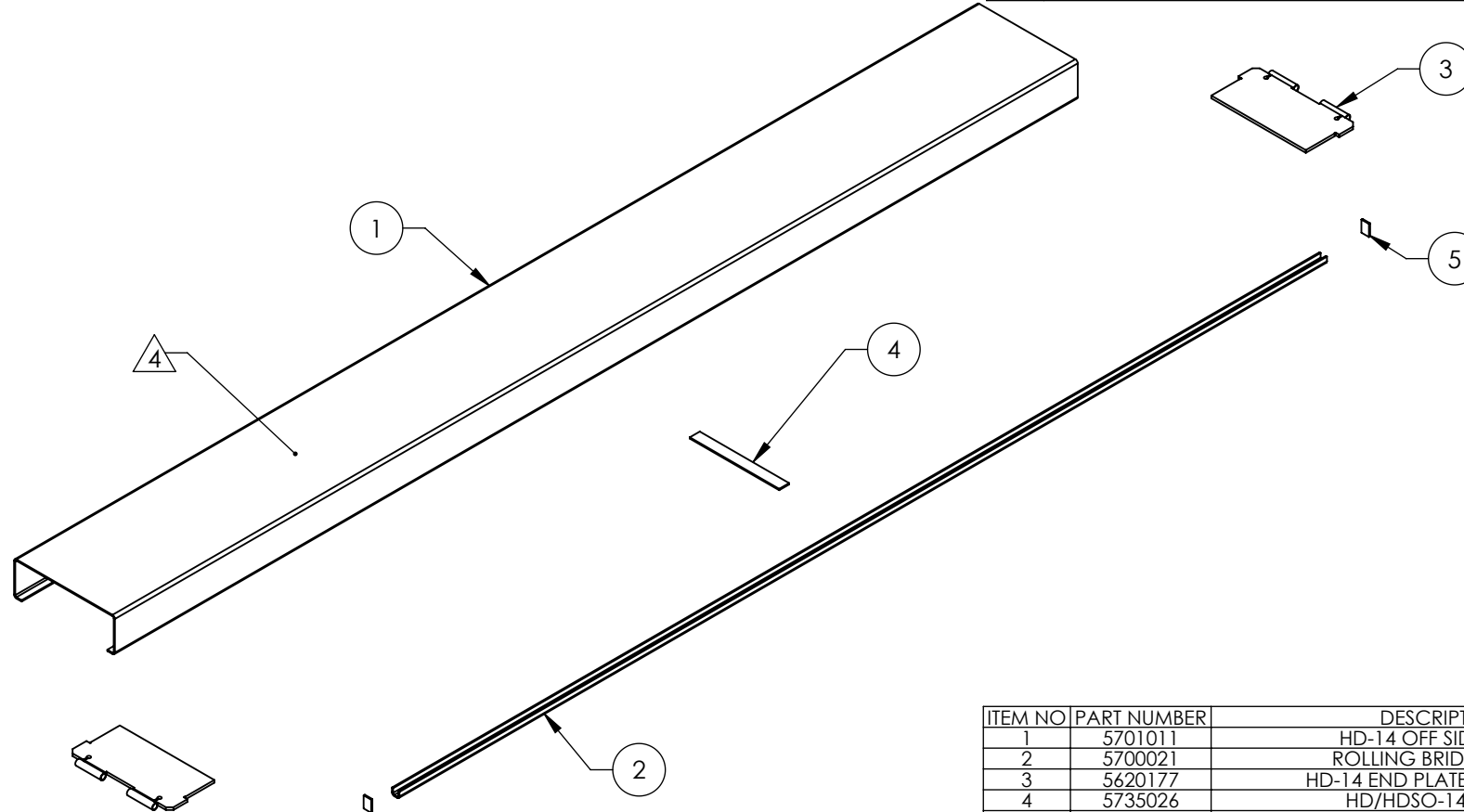
DO NOT SCALE DRAWING		NAME	DATE	BendPak. 1645 LEMONWOOD DR. PROVIDING AUTOMOTIVE STRUCTURES SANTA PAULA, CA 93060		
DIMENSIONS ARE IN MM TOLERANCES: 0. = ±1.5 0.0 = ±0.5 ANGULAR: 0. = ±2° SURFACE FINISH 1.6 ISO Ra μm FOR MACHINED SURFACES UNLESS OTHERWISE SPECIFIED		DRAWN	JR	04/02/2008	TITLE: HD-14 CROSSTUBE WELDMENT, LARGE WINDOW	
		CHECKED				
		THIRD ANGLE PROJECTION				
					SIZE DWG. NO.	REV
		PROPRIETARY AND CONFIDENTIAL THE INFORMATION CONTAINED IN THIS DRAWING IS THE SOLE PROPERTY OF BENDPAK INC. ANY REPRODUCTION IN PART OR AS A WHOLE WITHOUT THE WRITTEN PERMISSION OF BENDPAK INC. IS PROHIBITED.			A 5600058	K
		SCALE: 1:20				SHEET 1 OF 2

NOTE: UNLESS OTHERWISE SPECIFIED.


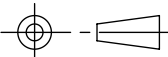
- BREAK AND DEBURR ALL SHARP EDGES 0.3mm
- REMOVE ALL WELD SPLATTER
- PAINT BENDPAK BLUE

NEXT ASSEMBLY
5215595

REVISION				
REV	DESCRIPTION	DATE	EDITED BY	ECO#
E	UPDATED NEXT ASSEMBLY AND BOM REVISION	11/18/2008	AC	00249
E-001	UPDATED NEXT ASSEMBLY	02/24/2010	AC	00333
E-002	ADDED WELD TO OPPOSITE SIDE OF TIE BAR	05/19/2010	TM	00351
F	MOVED 5735032 UP 12mm, UPDATED BOM	10/18/2010	TM	00414
F-001	REVISION ROLLING BRIDGE BEAM WELD WAS 6 x 100-300 NOW 5 x 60-350	11/22/2010	TM	00427
F-002	UPDATED NEXT ASSEMBLY	10/28/2011	TM	00487
F-003	UPDATED NEXT ASSEMBLY	05/16/2013	TM	00593
F-004	UPDATED NEXT ASSEMBLY	08/14/2014	TM	00664
G	REMOVED (1) 5735026 FROM THE UNDERSIDE, REMAINING 5735026 MOVED TO CENTER	1/28/2015	MR	00675



ITEM NO	PART NUMBER	DESCRIPTION	QTY	REV
1	5701011	HD-14 OFF SIDE RAMP	1	D
2	5700021	ROLLING BRIDGE BEAM	1	B
3	5620177	HD-14 END PLATE WELDMENT	2	A
4	5735026	HD/HDSO-14 TIE BAR	1	E
5	5735032	HD-7/9/14, HDS/HDSO-14, XR-12000 ROLLING JACK RAIL CLOSEOUT	2	C

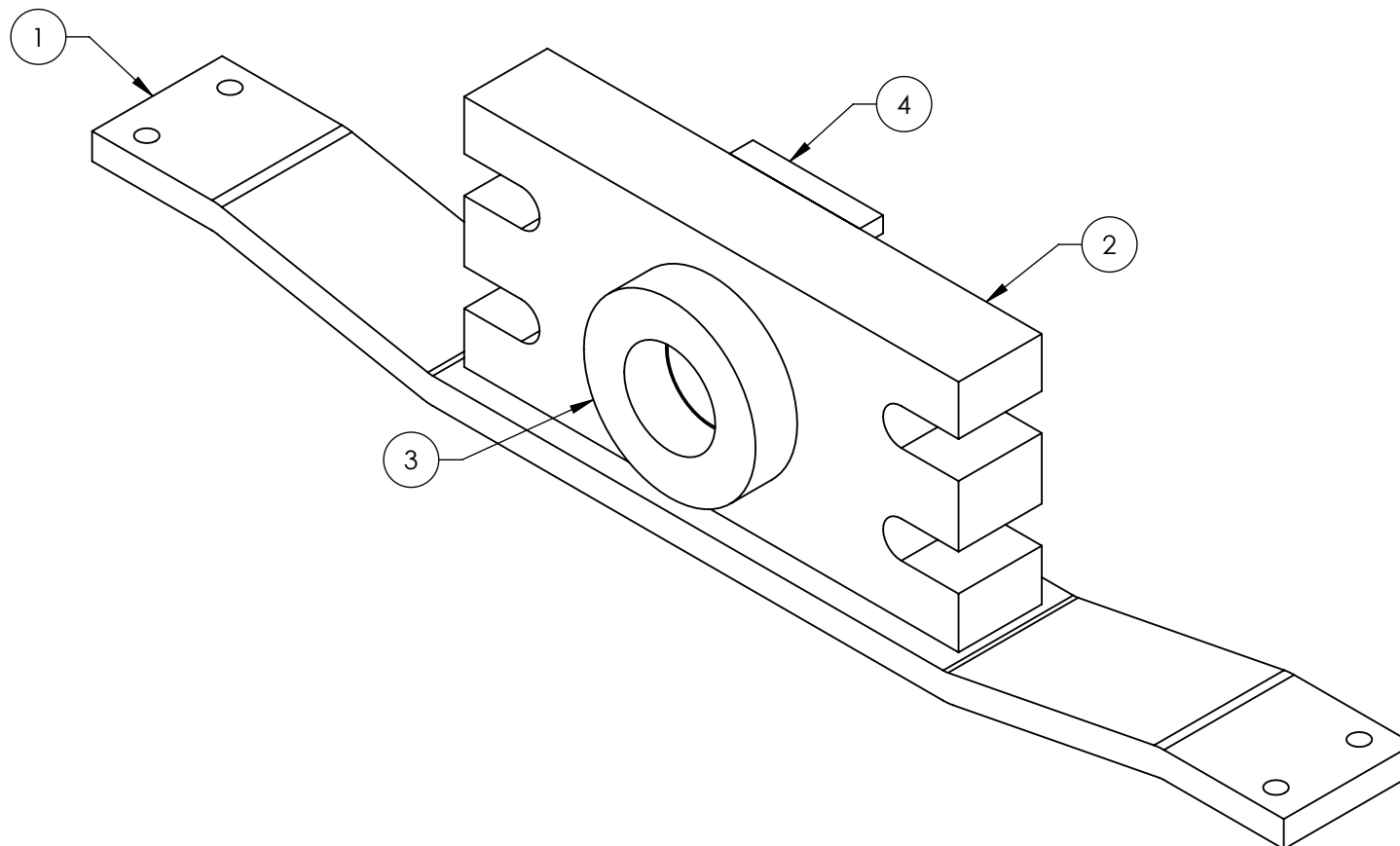
DO NOT SCALE DRAWING		NAME	DATE	 BendPak. <small>PROVIDING AUTOMOTIVE SERVICE SOLUTIONS</small> 1645 LEMONWOOD DR. SANTA PAULA, CA 93060		
DRAWN		AC	10/15/2007			
CHECKED		VB	02/09/2015	TITLE: HD-14 OFFSIDE RAMP WELDMENT		
THIRD ANGLE PROJECTION						
DIMENSIONS ARE IN MM TOLERANCES: 0. = ±1.5 0.0 = ±0.5 ANGULAR: 0. = ±2° SURFACE FINISH 1.6 ISO Ra μm FOR MACHINED SURFACES UNLESS OTHERWISE SPECIFIED				SIZE DWG. NO.		REV
Y		PROPRIETARY AND CONFIDENTIAL THE INFORMATION CONTAINED IN THIS DRAWING IS THE SOLE PROPERTY OF BENDPAK INC. ANY REPRODUCTION IN PART OR AS A WHOLE WITHOUT THE WRITTEN PERMISSION OF BENDPAK INC. IS PROHIBITED.		A	5600069	G
				SCALE: 1:25		SHEET 1 OF 2

NOTE: UNLESS OTHERWISE SPECIFIED.

1. BREAK AND DEBURR ALL SHARP EDGES 0.3mm
2. REMOVE ALL WELD SPLATTER
3. PAINT AFTER WELDING UNLESS USED ON ALIGNMENT RAMP
4. APPLY #30 GRIT ALUMINUM OXIDE WHEN PAINTING

NEXT ASSEMBLY
5245387

REVISION				
REV.	DESCRIPTION	DATE	EDITED BY	ECO#
D	REPLACED 5545007 WITH 5745317	01/20/2009	AC	00266
E	WAS 235 NOW 229, UPDATED BOM REVISIONS	03/08/2010	TM	00333
F	ADDED 5735289	04/23/2010	TM	00351



NOTE: UNLESS OTHERWISE SPECIFIED.

1. BREAK AND DEBURR ALL SHARP EDGES 0.3mm
2. REMOVE ALL WELD SPLATTER
3. PAINT BENDPAK BLUE

ITEM NO.	PART NUMBER	DESCRIPTION	QTY.	REV
1	5701051	HD-14 CYLINDER FLANGE ARM	1	C
2	5736028	HD-14 CABLE RETAINER BLOCK	1	E
3	5745317	HD-14 SERIES CYLINDER FLANGE ARM SPACER	1	B
4	5735289	HD/HDS-14 CYLINDER FLANGE ARM SPACER	1	B

DO NOT SCALE DRAWING	NAME	DATE
DIMENSIONS ARE IN MM	DRAWN	AC 12/17/2007
TOLERANCES:	CHECKED	AC 04/31/2010
0. = ± 1.5		
0.0 = ± 0.5		
ANGULAR: 0. = $\pm 2^\circ$		
SURFACE FINISH 1.6 ISO Ra μm		
FOR MACHINED SURFACES		
UNLESS OTHERWISE SPECIFIED		
MATERIAL:		
SIZE:		

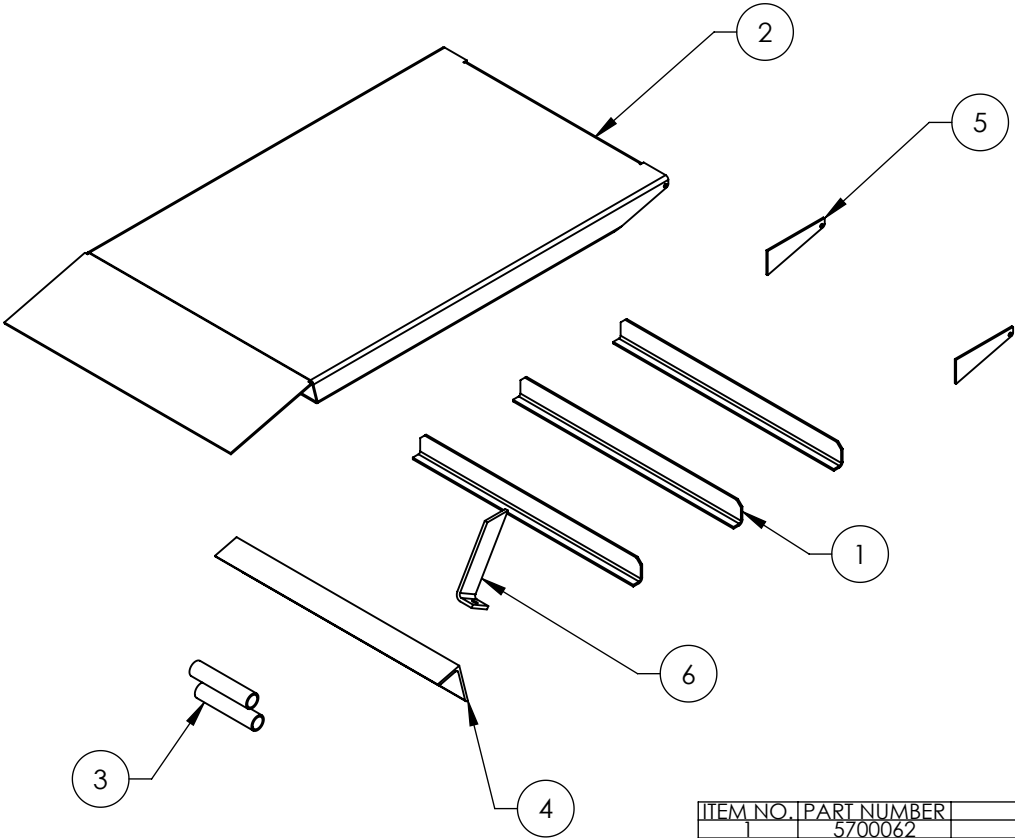
THIRD ANGLE PROJECTION	TITLE:
	HD-14 CYLINDER FLANGE ARM WELDMENT
PROPRIETARY AND CONFIDENTIAL	
THE INFORMATION CONTAINED IN THIS DRAWING IS THE SOLE PROPERTY OF BENDPAK INC. ANY REPRODUCTION IN PART OR AS A WHOLE WITHOUT THE WRITTEN PERMISSION OF BENDPAK INC. IS PROHIBITED.	

SIZE	DWG. NO.	REV
A	5600079	F

SCALE: 1:2	SHEET 1 OF 2
------------	--------------

NEXT ASSEMBLY
5215033


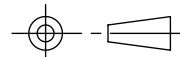
REVISION				
REV	DESCRIPTION	DATE	EDITED BY	ECO#
D	UPDATED DRAWING, REMOVED 5755028, ADDED ONE 5755027, CHANGED ROLLER CLEVIS PLATE DISTANCE 38 WAS 57 (2ND PAGE)	06/16/2008	TM	00206
D-001	CHANGED SURFACE FINISH FROM 3.2 μm TO 1.6 $\text{Ra } \mu\text{m}$	09/09/2008	GJ	00237
E	ADDED HD/S-14 SERIES TO TITLE	10/05/2009	AC	00300
F	UPDATED BOM REVISION	07/30/2010	TM	00387
F-001	CHANGED PAINT COLOR FROM BLUE TO YELLOW AND ADDED PAINT SPEC NUMBER	12/08/2010	TM	00427



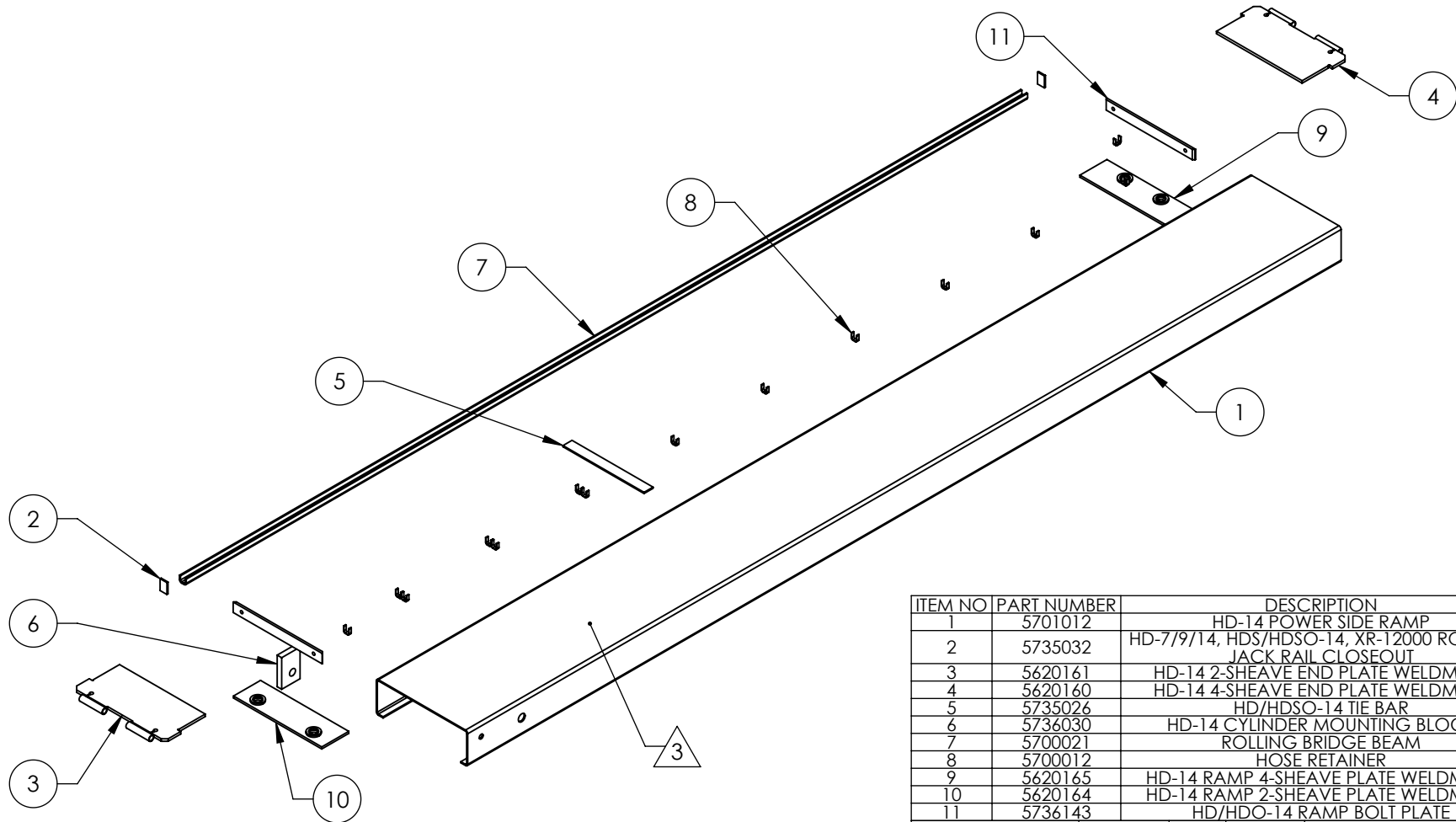
NOTE: UNLESS OTHERWISE SPECIFIED.

1. BREAK AND DEBURR ALL SHARP EDGES 0.3mm
2. REMOVE ALL WELD SPLATTER
3. GRIND/SAND EXTERIOR CORNERS/WELDS SMOOTH
4. PAINT BENDPAK YELLOW 583-2T
5. APPLY #30 GRIT ALUMINUM OXIDE WHEN PAINTING TO TOP ONLY AFTER WELDING

ITEM NO.	PART NUMBER	DESCRIPTION		QTY.	REV
1	5700062	RAMP SUPPORT		3	C
2	5701034	DRIVE UP RAMP SHELL		1	D
3	5755027	RAMP HINGE		2	C
4	5700063	SUPPORT ANGLE		1	D
5	5736083	ROLLER CLEVIS PLATE		2	E
6	5730012	RAMP STOP		1	C

DO NOT SCALE DRAWING		NAME	DATE	 BendPak. 1645 LEMONWOOD DR. SANTA PAULA, CA 93060		
DIMENSIONS ARE IN MM		DRAWN	JR			04/30/2008
TOLERANCES: 0. = ±1.5 0.0 = ±0.5		CHECKED	AC			12/13/2010
ANGULAR: 0. = ±2°	THIRD ANGLE PROJECTION			TITLE: HD/S-14 SERIES DRIVE UP RAMP WELDMENT		
SURFACE FINISH 1.6 ISO $\text{Ra } \mu\text{m}$ FOR MACHINED SURFACES UNLESS OTHERWISE SPECIFIED						
MATERIAL: —	PROPRIETARY AND CONFIDENTIAL THE INFORMATION CONTAINED IN THIS DRAWING IS THE SOLE PROPERTY OF BENDPAK INC. ANY REPRODUCTION IN PART OR AS A WHOLE WITHOUT THE WRITTEN PERMISSION OF BENDPAK INC. IS PROHIBITED.			SIZE	DWG. NO.	REV
SIZE: —				A	5600138	F
—				SCALE: 1:12		SHEET 1 OF 2

REVISION		DATE	EDITED BY	ECO#
REV	DESCRIPTION			
B	UPDATED BOM REVISION	08/13/2009	TM	00249
C	CHANGED HOSE RETAINER DISTANCE WAS 100 NOW 25, ADDED WELD TO OPPOSITE SIDE OF TIE BAR AND SHEAVE PLATES	05/14/2010	TM	00351
D	MOVED 5735032 UP 12mm, UPDATED BOM REVISION	10/18/2010	TM	00414
D-001	ROLLING BRIDGE BEAM WELD WAS 6 x 100-300 NOW 5 x 60-350	11/22/2010	TM	00427
D-002	ADDED 6mm WELD TO BOTTOM OF 5735030	08/10/2011	TM	00479



NOTE: UNLESS OTHERWISE SPECIFIED.

1. BREAK AND DEBURR ALL SHARP EDGES 0.3mm
2. REMOVE ALL WELD SPLATTER
3. APPLY #30 GRIT ALUMINUM OXIDE TO TOP SURFACE AFTER WELDING & BEFORE PAINTING
4. PAINT BENDPAK BLUE

ITEM NO.	PART NUMBER	DESCRIPTION	QTY	REV
1	5701012	HD-14 POWER SIDE RAMP	1	D
2	5735032	HD-7/9/14, HDS/HDSO-14, XR-12000 ROLLING JACK RAIL CLOSEOUT	2	C
3	5620161	HD-14 2-SHEAVE END PLATE WELDMENT	1	A
4	5620160	HD-14 4-SHEAVE END PLATE WELDMENT	1	A
5	5735026	HD/HDSO-14 TIE BAR	1	E
6	5736030	HD-14 CYLINDER MOUNTING BLOCK	1	A
7	5700021	ROLLING BRIDGE BEAM	1	B
8	5700012	HOSE RETAINER	14	B
9	5620165	HD-14 RAMP 4-SHEAVE PLATE WELDMENT	1	A
10	5620164	HD-14 RAMP 2-SHEAVE PLATE WELDMENT	1	A
11	5736143	HD/HDO-14 RAMP BOLT PLATE	2	A

DO NOT SCALE DRAWING

DIMENSIONS ARE IN MM
TOLERANCES:
0. = ±1.5
0.0 = ±0.5

ANGULAR: 0. = ±2°

SURFACE FINISH 1.6 ISO Ra µm
FOR MACHINED SURFACES
UNLESS OTHERWISE SPECIFIED

MATERIAL:

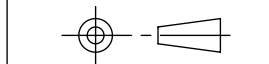
SIZE:

NAME DATE

DRAWN AC 12/11/2007

CHECKED

THIRD ANGLE PROJECTION



PROPRIETARY AND CONFIDENTIAL
THE INFORMATION CONTAINED IN THIS DRAWING IS
THE SOLE PROPERTY OF BENDPAK INC. ANY
REPRODUCTION IN PART OR AS A WHOLE WITHOUT
THE WRITTEN PERMISSION OF BENDPAK INC. IS
PROHIBITED.

BendPak 1645 LEMONWOOD DR.
SANTA PAULA, CA 93060

TITLE: HD-14T POWER SIDE
RAMP WELDMENT

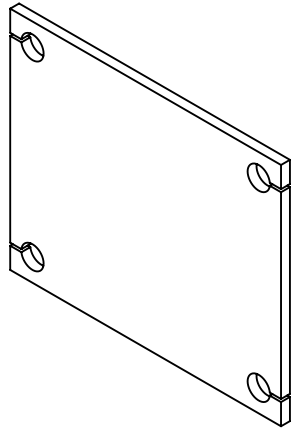
SIZE DWG. NO. REV

A 5600280 D

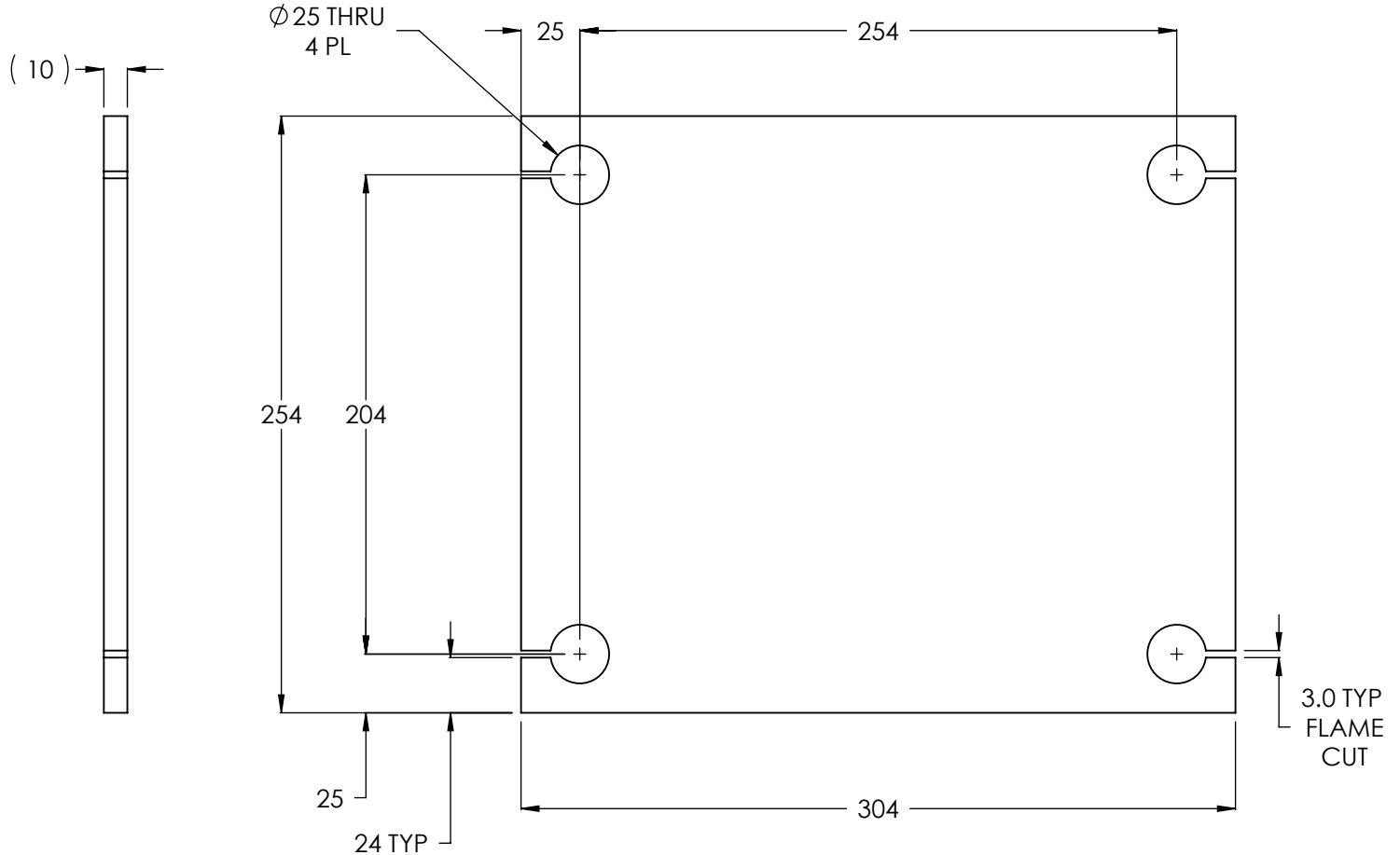
SCALE: 1:25

SHEET 1 OF 3


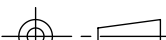
NEXT ASSEMBLY
5215203



ISOMETRIC VIEW
FOR REFERENCE ONLY
DO NOT SCALE



REVISION				
REV.	DESCRIPTION	DATE	EDITED BY	ECO#
B	UPDATE SHEET TEMPLATE	03/31/2008	MT	00157
B-001	CHANGED SURFACE FINISH FROM 3.2 μm TO 1.6 $\text{Ra } \mu\text{m}$	09/10/2008	GJ	00237
B-002	UPDATED NEXT ASSEMBLY	10/30/2008	AC	00174
B-003	UPDATED NEXT ASSEMBLY	11/12/2008	TM	00249
C	UPDATED TITLE TO REFLECT WHERE USED	02/26/2010	AC	00333
D	UPDATED TITLE TO REFLECT WHERE USED	06/02/2010	AC	00366
D-001	UPDATED NEXT ASSEMBLIES	11/01/2011	TM	00487

DO NOT SCALE DRAWING		NAME		DATE		 BendPak. <small>PROVIDING AUTOMOTIVE BRACE SOLUTIONS</small>		1645 LEMONWOOD DR. SANTA PAULA, CA 93060		
NEXT ASSEMBLY	DIMENSIONS ARE IN MM		DRAWN		GJZ		02/29/2008			
	TOLERANCES:		CHECKED							
	0. = ±1.5		<div>THIRD ANGLE PROJECTION</div> 							
	0.0 = ±0.5									
5600182	ANGULAR: 0. = ±2°		<div>PROPRIETARY AND CONFIDENTIAL</div> <div>THE INFORMATION CONTAINED IN THIS DRAWING IS THE SOLE PROPERTY OF BENDPAK INC. ANY REPRODUCTION IN PART OR AS A WHOLE WITHOUT THE WRITTEN PERMISSION OF BENDPAK INC. IS PROHIBITED.</div>				TITLE:		HD-7P/7500/9/14 SERIES	
5600183	SURFACE FINISH 1.6 ISO Ra µm						POST BASE PLATE			
5600184	FOR MACHINED SURFACES									
5600185	UNLESS OTHERWISE SPECIFIED									
5600524	MATERIAL: HR ASTM A36 OR									
5600525	Q235 GB/T 700									
5600639	SIZE:									
5600640	10mm THK									
5600903					SIZE		DWG. NO.		REV	
5600904					A		5731632		D	
5620236							SCALE: 1:3		SHEET 1 OF 1	
5620237										

NOTE: UNLESS OTHERWISE SPECIFIED.

1. BREAK AND DEBURR ALL SHARP EDGES 0.3mm.

PART SPECIFICATION FORM

BENDPAK Number:	5900037
MRP Description:	HD-14 INSTALLATION MANUAL
Date:	12/28/2010
ECO :	00431

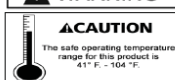
1. Engineering Specification

Application:

INSTALLATION MANUAL

Detailed Description:

WARNING



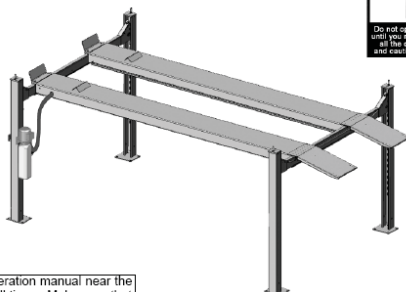
PLEASE READ THE ENTIRE CONTENTS OF THIS MANUAL PRIOR TO INSTALLATION AND OPERATION. BY PROCEEDING YOU AGREE THAT YOU FULLY UNDERSTAND AND COMPREHEND THE FULL CONTENTS OF THIS MANUAL. FORWARD THIS MANUAL TO ALL OPERATORS. FAILURE TO OPERATE THIS EQUIPMENT AS DIRECTED MAY CAUSE INJURY OR DEATH.

REV D 08-13-10
pin 5900037

INSTALLATION AND OPERATION MANUAL

14,000 POUND CAPACITY
COMMERCIAL GRADE
FOUR-POST LIFTS

MODELS:
HD-14SS
HD-14
HD-14X
HD-14 TL



Keep this operation manual near the machine at all times. Make sure that **ALL USERS** read this manual.

SHIPPING DAMAGE CLAIMS

When this equipment is shipped, title passes to the purchaser upon receipt from the carrier. Consequently, claims for the material damaged in shipment must be made by the purchaser against the transportation company at the time shipment is received.

BE SAFE

Your new lift was designed and built with safety in mind. However, your overall safety can be increased by proper training and thoughtful operation on the part of the operator. DO NOT operate or repair this equipment without reading this manual and the important safety instructions shown inside.

2. Vendor Information

Approved Vendor	Vendor Part #	Contact #	Preferred Vendor
1)			

PART SPECIFICATION FORM

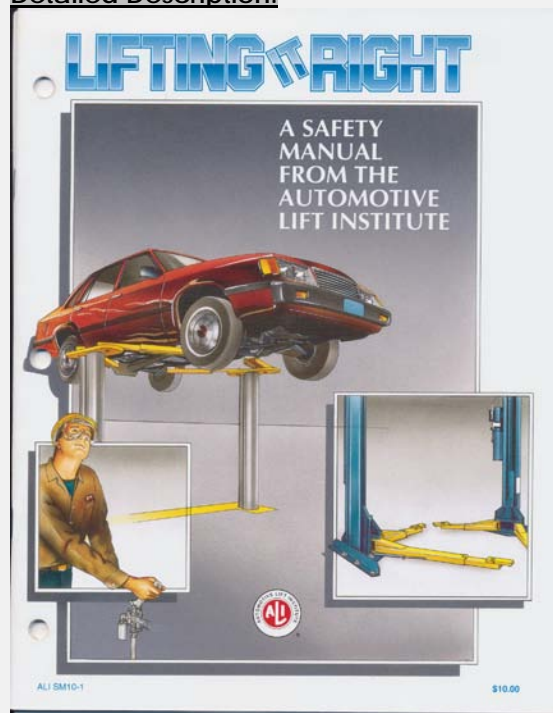
BENDPAK Number:	5900147
MRP Description:	SAFETY MANUAL ALI / SM 93-1
Date:	12/28/2010
ECO :	00431

1. Engineering Specification

Application:

ALI SAFETY MANUAL

Detailed Description:



2. Vendor Information

Approved Vendor	Vendor Part #	Contact #	Preferred Vendor
1)			

PART SPECIFICATION FORM

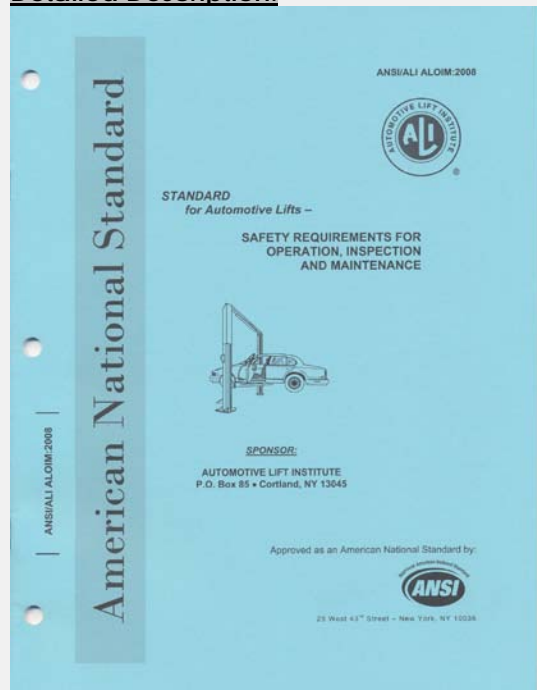
BENDPAK Number:	5900152
MRP Description:	ALIGN OIM OPERATION INSPECTION & MAINTENANCE
Date:	12/28/2010
ECO :	00431

1. Engineering Specification

Application:

ALI OPERATION INSPECTION & MAINTENANCE MANUAL

Detailed Description:



2. Vendor Information

Approved Vendor	Vendor Part #	Contact #	Preferred Vendor
1)			

PART SPECIFICATION FORM

BENDPAK Number:	5905103
MRP Description:	WARNING ALI/WL 200
Date:	05/06/2013
ECO :	00593

1. Engineering Specification

Application:

ALI 4 POST SAFETY STICKER KIT

Detailed Description:



SIZE: 11" L x 8.5" W (279mm x 216mm)

2. Vendor Information

Approved Vendor	Vendor Part #	Contact #	Preferred Vendor
1)			

PART SPECIFICATION FORM

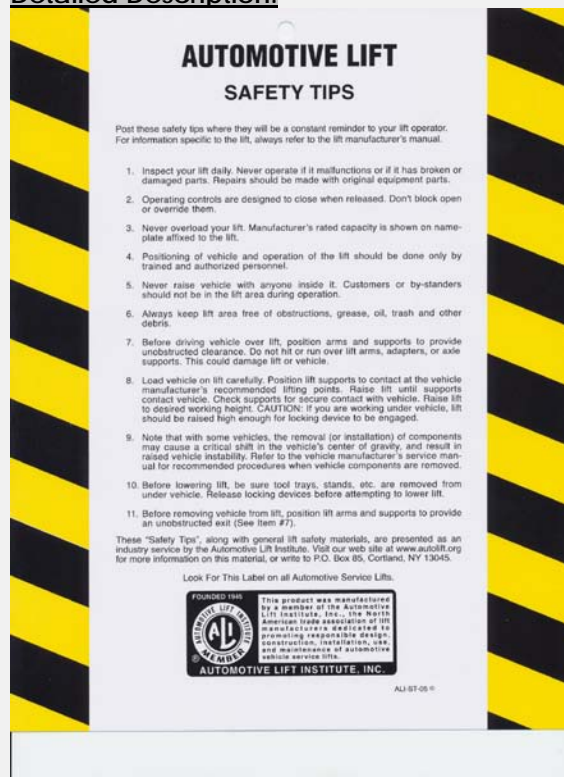
BENDPAK Number:	5905151
MRP Description:	SAFETY TIPS CARD ALI-ST 90
Date:	12/28/2010
ECO :	00431

1. Engineering Specification

Application:

ALI SAFETY TIPS

Detailed Description:



2. Vendor Information

Approved Vendor	Vendor Part #	Contact #	Preferred Vendor
1)			

PART SPECIFICATION FORM

BENDPAK Number:	5905311
MRP Description:	BENDPAK LABEL; 4 x 38" WHITE INK
Date:	05/13/2015
ECO :	00689

1. Engineering Specification

Application:

BENDPAK LABEL

Detailed Description:



SIZE: 38" L x 4.25" W (965mm x 108mm)

- Material: Yellow Represents Clear Adhesive PET
- Size: 4.25"W x 38"H
- Thickness: 4 Mil
- Finish: Polished
- Ink: U.V. protected, Opaque White
- Print Process: Silk Screen, 85 line-screen (Opaque White ink, clear adhesive PET will fill in blank areas.)
- Lamination: Clear-gloss over-laminate for abrasion, chemical, and ultra violet protection

2. Vendor Information

Approved Vendor	Vendor Part #	Contact #	Preferred Vendor
1)			

B

E

N

D

P

A

K

BendPak

ABOVE-GROUND LIFTS



BendPak®
PROVIDING AUTOMOTIVE SERVICE SOLUTIONS



1645 Lemonwood Drive
Santa Paula, CA 93060
U.S.A.
(805) 933-9970
www.bendpak.com

P/N 5905311

PART SPECIFICATION FORM

BENDPAK Number:	5905465
MRP Description:	MANUFACTURER LABEL
Date:	05/07/2013
ECO :	00593

1. Engineering Specification

Application:

MANUFACTURER LABEL

Detailed Description:

MFD. BY BENDPAK INC.

LIFT TYPE: SURFACE MOUNT CAPACITY: MED/HVY DTY
 POWER: ELECTRIC/HYDRAULIC ANCHORS: AS EQUIPPED
 INSTALLATION - SEE OWNERS GUIDE OR CONTACT FACTORY

SHIPPING DAMAGE CLAIMS

WHEN THIS EQUIPMENT IS SHIPPED, TITLE PASSES TO THE PURCHASER UPON RECEIPT FROM THE CARRIER. CONSEQUENTLY, CLAIMS FOR THE MATERIAL DAMAGED IN SHIPMENT MUST BE MADE BY THE PURCHASER AGAINST THE TRANSPORTATION COMPANY AT THE TIME SHIPMENT IS RECEIVED.

PLEASE READ ALL OPERATORS/USERS MANUAL(S) PRIOR TO INSTALLATION AND OPERATION. UNDERSTAND AND COMPREHEND THE FULL CONTENTS OF EACH MANUAL(S) PRIOR TO INSTALLATION AND OPERATION. DELIVER THE MANUAL(S) TO ALL OPERATORS. FAILURE TO OPERATE THIS EQUIPMENT AS DIRECTED MAY CAUSE INJURY OR DEATH.

IMPORTANT NOTE:

BENDPAK LIFTS ARE SUPPLIED WITH CONCRETE FASTENERS MEETING THE CRITERIA AS PRESCRIBED BY ASTM E488 - 96(2003). LIFT BUYERS ARE RESPONSIBLE FOR ANY SPECIAL REGIONAL STRUCTURAL AND/OR SEISMIC ANCHORING REQUIREMENTS SPECIFIED BY ANY OTHER AGENCIES AND/OR CODES SUCH AS THE UNIFORM BUILDING CODE (UBC) AND/OR INTERNATIONAL BUILDING CODE (IBC).



INTERNAL BAR CODE - FOR FACTORY AUDIT ONLY 34086

BPK	STYOT	P20KVR	X18576	HVY DTY/ GVR
				832

THE MANUFACTURE, USE, SALE OR IMPORT OF THIS PRODUCT MAY BE SUBJECT TO ONE OR MORE UNITED STATES PATENTS, OR PENDING APPLICATIONS, OWNED BY BENDPAK, INC.

ENGINEERED BY BENDPAK INC USA

MADE IN CHINA

SIZE: 5.125" L x 5.125" W (130mm x 130mm)

2. Vendor Information

Approved Vendor	Vendor Part #	Contact #	Preferred Vendor
1)			

MFD. BY BENDPAK INC.

LIFT TYPE: SURFACE MOUNT

CAPACITY: MED/HVY DTY

POWER: ELECTRIC/HYDRAULIC

ANCHORS: AS EQUIPPED

INSTALLATION - SEE OWNERS GUIDE OR CONTACT FACTORY

SHIPPING DAMAGE CLAIMS

WHEN THIS EQUIPMENT IS SHIPPED, TITLE PASSES TO THE PURCHASER UPON RECEIPT FROM THE CARRIER. CONSEQUENTLY, CLAIMS FOR THE MATERIAL DAMAGED IN SHIPMENT MUST BE MADE BY THE PURCHASER AGAINST THE TRANSPORTATION COMPANY AT THE TIME SHIPMENT IS RECEIVED.

PLEASE READ ALL OPERATORS/USERS MANUAL(S) PRIOR TO INSTALLATION AND OPERATION. UNDERSTAND AND COMPREHEND THE FULL CONTENTS OF EACH MANUAL(S) PRIOR TO INSTALLATION AND OPERATION. DELIVER THE MANUAL(S) TO ALL OPERATORS. FAILURE TO OPERATE THIS EQUIPMENT AS DIRECTED MAY CAUSE INJURY OR DEATH.

IMPORTANT NOTE:

BENDPAK LIFTS ARE SUPPLIED WITH CONCRETE FASTENERS MEETING THE CRITERIA AS PRESCRIBED BY ASTM E488 - 96(2003). LIFT BUYERS ARE RESPONSIBLE FOR ANY SPECIAL REGIONAL STRUCTURAL AND/OR SEISMIC ANCHORING REQUIREMENTS SPECIFIED BY ANY OTHER AGENCIES AND/OR CODES SUCH AS THE UNIFORM BUILDING CODE (UBC) AND/OR INTERNATIONAL BUILDING CODE (IBC).



INTERNAL BAR CODE - FOR FACTORY AUDIT ONLY 34086

BPK

STYOT

P20KVR

X18576

HVY DTY/ GVR
832

THE MANUFACTURE, USE, SALE OR IMPORT OF THIS PRODUCT MAY BE SUBJECT TO ONE OR MORE UNITED STATES PATENTS, OR PENDING APPLICATIONS, OWNED BY BENDPAK, INC.

ENGINEERED BY BENDPAK INC USA

MADE IN CHINA

PART SPECIFICATION FORM

BENDPAK Number:	5905556
MRP Description:	4-POST SAFETY DECAL
Date:	05/06/2013
ECO :	00593

1. Engineering Specification

Application:

4-POST SAFETY DECAL

Detailed Description:



SIZE: 23" L x 4" W (584mm x 100mm)

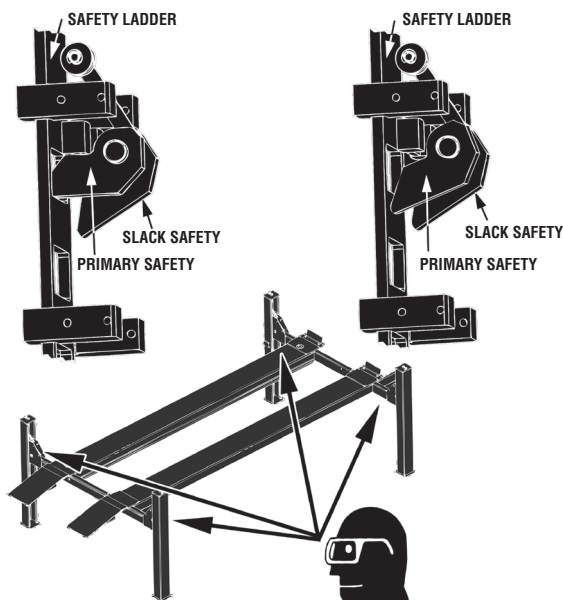
2. Vendor Information

Approved Vendor	Vendor Part #	Contact #	Preferred Vendor
1)			

DANGER

**SAFETY LOCKS ENGAGED
– OK TO PROCEED –**

**SAFETY LOCK NOT ENGAGED
– REMAIN CLEAR –**



VISUALLY CONFIRM THAT ALL PRIMARY SAFETY LOCKS ARE ENGAGED BEFORE ENTERING WORK AREA.

Suspension components used on this lift are intended to raise and lower lift only and are NOT meant to be load-holding devices. Remain clear of elevated lift unless visual confirmation is made that all primary safety locks are fully engaged and the lift is LOWERED onto the safety locks. Refer to installation/operation manual for proper safety lock procedures and/or further instruction.

WARNING

WIRE ROPE INSPECTION AND MAINTENANCE

- Lifting cables should be replaced every (3) three years or when visible signs of damage are apparent. DO NOT USE LIFT WITH DEFECTIVE OR WORN CABLES.
- Wire rope should be maintained in a well-lubricated condition at all times. Wire rope is only fully protected when each wire strand is lubricated both internal and external. Excessive wear will shorten the life of the wire rope. The factory suggests wire rope lubricant that penetrates to the core of the rope and provides long-term lubrication between each individual strand. In order to make sure that the inner layers of the rope remain well lubricated, lubrication should be carried out at intervals not exceeding three (3) months during operation.
- All sheaves and guide rollers in contact with the moving wire rope should be given regular visual checks for surface wear and lubricated to make sure that they run freely. This operation should be carried out at appropriate intervals generally not exceeding three (3) months during operation. For all sheave axles, the factory recommends standard wheel bearing grease. For all sheaves and/or guide rollers, the factory recommends 90-WT gear oil or similar heavy lubricant applied by any method including pump/spray dispensing, brush, hand and/or swabbing.

Failure to read, understand and follow these instructions may cause death or serious injury. Read and understand these instructions before using lift.

IMPORTANT OPERATION / MAINTENANCE INSTRUCTIONS - PLEASE READ

TO RAISE LIFT

- ✓ Position vehicle tires at the center of each runway.
- ✓ Set parking brake or use wheel chock to hold vehicle in position.
- ✓ Before raising vehicle, be sure all personnel are clear of lift and surrounding area. Pay careful attention to overhead clearances.
- ✓ Raise lift to desired height by pressing push button on power unit.
- ✓ Maintain visual contact with vehicle and surrounding area at all times while lowering lift.
- ✓ **STOP IMMEDIATELY** if load shifts or becomes unlevel.
- ✓ After vehicle is raised to desired height, lower lift onto the nearest safety lock. Do not allow cables to become excessively slack.
- ✓ **ALWAYS INSURE ALL PRIMARY SAFETY LOCKS ARE ENGAGED** before entering work area.

TO LOWER LIFT

- ✓ Before lowering vehicle, be sure all personnel, tools and equipment are clear of lift and surrounding area.
- ✓ Raise lift by pressing **RAISE BUTTON** on power unit. Elevate lift at least two inches to allow adequate clearance for locks to clear.
- ✓ Press push button **AIR SAFETY VALVE** and **HOLD**.
- ✓ Lower vehicle by pressing power unit lowering handle until lift has descended completely.
- ✓ When lowering lift **PAY CAREFUL ATTENTION** that all personnel and objects are kept clear.
- ✓ **ALWAYS** keep a visual line of site on lift **AT ALL TIMES**.
- ✓ **ALWAYS** make sure that **ALL LOCKS** are disengaged. If one of the locks inadvertently engages on descent, lift and/or vehicle may disrupt causing personal injury or death.

REQUIRED MONTHLY MAINTENANCE

- ✓ **ALWAYS** consult operation manual for factory recommended maintenance.
- ✓ Adjust lift cables to ensure lift raises level and safety locks engage simultaneously.
- ✓ Check all chain/cable connections, bolts and pins to insure proper mounting.
- ✓ Visually inspect safety locks for proper operation.
- ✓ Visually inspect concrete floor. **DO NOT USE LIFT** if concrete foundation shows signs of deterioration.
- ✓ Inspect all anchor bolts and retighten if necessary.
- ✓ Check columns for squareness and plumb.
- ✓ Inspect all bolts and/or fasteners making sure they are properly secured.
- ✓ Make a visual inspection of **ALL MOVING PARTS** and check for excessive signs of wear.
- ✓ Replace **ALL FAULTY PARTS** before lift is put back into operation.

WARNING

1. **WARNING:** If cement anchor bolts are loose, or any component of the lift is found to be defective, **DO NOT USE LIFT!**
2. Never operate the lift with any person or equipment below.
3. Never exceed rated capacity.
4. Always insure safety locks are engaged before any attempt is made to work on or near vehicle.
5. Never leave lift in an elevated position unless the safety locks are engaged.
6. Do not permit electric motor to get wet! Motor damage caused by dampness is not covered under warranty.

PART SPECIFICATION FORM

BENDPAK Number:	5905557
MRP Description:	MAX CAP DANGER 14K
Date:	05/06/2013
ECO :	00593

1. Engineering Specification

Application:

LIFT CAPACITY STICKER

Detailed Description:

SIZE: 5" L x 4" W (127mm x 100mm)



2. Vendor Information

Approved Vendor	Vendor Part #	Contact #	Preferred Vendor
1)			

DANGER

THE MAXIMUM LIFTING CAPACITY FOR THIS LIFT IS DESCRIBED BELOW

Maximum Lifting Capacity

14,000 lbs. / 6350 kg

Max. Lifting Cap. / Front of Lift Center

7000 lbs. / 3175 kg

Max. Lifting Cap. / Rear of Lift Center

7000 lbs. / 3175 kg

Exceeding the weight capacity of this lift can damage lift and/or property and may cause personal harm, injury or death to operators and/or bystanders. All vehicles MUST be positioned on lift with CENTER OF GRAVITY midway between adapters and/or centered on runways. Damage to lift due to overloading or misuse IS NOT covered under warranty.

PART SPECIFICATION FORM


BENDPAK Number:	5905940
MRP Description:	PRODUCT DATA LABEL
Date:	05/06/2013
ECO :	00593

1. Engineering Specification

Application:

PRODUCT DATA LABEL

Detailed Description:



SANTA PAULA, CA USA
 WWW.BENDPAK.COM

LIFT TYPE: SURFACE MOUNT CAP: MED/HVY DTY MFG. BPK SEE DATA PLATE FOR PRODUCT DETAILS
 POWER: ELECTRIC/HYDRAULIC INSTALLATION - SEE OWNERS GUIDE OR CONTACT FACTORY

SAFETY INSTRUCTIONS: IF ATTACHMENTS, ACCESSORIES OR CONFIGURATION MODIFYING COMPONENTS THAT ARE LOCATED IN THE LOAD PATH, AFFECT OPERATION OF THE LIFT, AFFECT THE LIFT ELECTRICAL LISTING OR AFFECT INTENDED VEHICLE ACCOMMODATION ARE USED ON THIS LIFT AND, IF THEY ARE NOT CERTIFIED FOR USE ON THIS LIFT, THEN THE CERTIFICATION OF THIS LIFT SHALL BECOME NULL AND VOID. CONTACT THE PARTICIPANT FOR INFORMATION PERTAINING TO CERTIFIED ATTACHMENTS, ACCESSORIES OR CONFIGURATION MODIFYING COMPONENTS.

BENDPAK LIFTS ARE SUPPLIED WITH CONCRETE FASTENERS MEETING THE CRITERIA AS PRESCRIBED BY ASTM E488 - 96(2003). LIFT BUYERS ARE RESPONSIBLE FOR ANY SPECIAL REGIONAL STRUCTURAL AND/OR SEISMIC ANCHORING REQUIREMENTS SPECIFIED BY ANY OTHER AGENCIES AND/OR CODES SUCH AS THE UNIFORM BUILDING CODE (UBC) AND/OR INTERNATIONAL BUILDING CODE (IBC).

THE MANUFACTURE, USE, SALE OR IMPORT OF THIS PRODUCT MAY BE SUBJECT TO ONE OR MORE UNITED STATES PATENTS, OR PENDING APPLICATIONS, OWNED BY BENDPAK, INC.
 DO NOT REMOVE ENGINEERED BY BENDPAK INC. USA MADE IN CHINA

SIZE: 2.3" L x 4.5" W (58mm x 114mm)

2. Vendor Information

Approved Vendor	Vendor Part #	Contact #	Preferred Vendor
1)			



SANTA PAULA, CA USA
WWW.BENDPAK.COM
PN 5905940

LIFT TYPE: SURFACE MOUNT CAP: MED/HVY DTY MFG. BPK SEE DATA PLATE FOR PRODUCT DETAILS
POWER: ELECTRIC/HYDRAULIC INSTALLATION - SEE OWNERS GUIDE OR CONTACT FACTORY

SAFETY INSTRUCTIONS: IF ATTACHMENTS, ACCESSORIES OR CONFIGURATION MODIFYING COMPONENTS THAT ARE LOCATED IN THE LOAD PATH, AFFECT OPERATION OF THE LIFT, AFFECT THE LIFT ELECTRICAL LISTING OR AFFECT INTENDED VEHICLE ACCOMMODATION ARE USED ON THIS LIFT AND, IF THEY ARE NOT CERTIFIED FOR USE ON THIS LIFT, THEN THE CERTIFICATION OF THIS LIFT SHALL BECOME NULL AND VOID. CONTACT THE PARTICIPANT FOR INFORMATION PERTAINING TO CERTIFIED ATTACHMENTS, ACCESSORIES OR CONFIGURATION MODIFYING COMPONENTS.

BENDPAK LIFTS ARE SUPPLIED WITH CONCRETE FASTENERS MEETING THE CRITERIA AS PRESCRIBED BY ASTM E488 - 96(2003). LIFT BUYERS ARE RESPONSIBLE FOR ANY SPECIAL REGIONAL STRUCTURAL AND/OR SEISMIC ANCHORING REQUIREMENTS SPECIFIED BY ANY OTHER AGENCIES AND/OR CODES SUCH AS THE UNIFORM BUILDING CODE (UBC) AND/OR INTERNATIONAL BUILDING CODE (IBC).

THE MANUFACTURE, USE, SALE OR IMPORT OF THIS PRODUCT MAY BE SUBJECT TO ONE OR MORE UNITED STATES PATENTS, OR PENDING APPLICATIONS, OWNED BY BENDPAK, INC.

DO NOT REMOVE

ENGINEERED BY BENDPAK INC. USA

MADE IN CHINA

PART SPECIFICATION FORM


BENDPAK Number:	5905952
MRP Description:	LABEL C (4-POST LIFTS NO CE)
Date:	11/23/2015
ECO :	00740

1. Engineering Specification

Application:

DATA SERIAL TAG, 4-POST LIFTS, NO CE

Detailed Description:




BendPak Santa Paula, CA USA
www.bendpak.com

MODEL NUMBER	SERIAL NUMBER
LIFT CAPACITY	DATE OF MFG.
ROLLING JACK MAX CAP.	MAX PSI / BAR

VOLTAGE

☐ 110-240VAC, 50-60 Hz, 1 Ph
 ☐ 208-440VAC, 50-60 Hz, 3 Ph
☐ 208-240VAC, 50-60 Hz, 1 Ph
 ☐ 208-440VAC, 50-60 Hz, 3 Ph

DANGER!
Disconnect Power
Before Servicing

 ETL
 PN 5905952

SIZE: 3.38" L x 3.38" W
(85.7mm x 85.7mm)

2. Vendor Information (Or for Reference)

Approved Vendor	Vendor Part #	Contact #	Preferred Vendor
1)			
2)			
OR BENDPAK ENGINEERING APPROVED EQUIVALENT			



Santa Paula, CA USA
www.bendpak.com

MODEL NUMBER

SERIAL NUMBER

LIFT CAPACITY

DESCRIPTION

ROLLING JACK MAX CAP.

MAX PSI / BAR

VOLTAGE

☐ 110-240VAC, 50-60 Hz, 1 Ph

☐ 380-415VAC, 50-60 Hz, 3 Ph

☐ 208-240VAC, 50-60 Hz, 1 Ph

☐ 208-440VAC, 50-60 Hz, 3 Ph

DATE OF MFG.



DANGER!

Disconnect Power
Before Servicing

WARRANTY VOID IF DATA PLATE IS REMOVED



PN 5905952



2016
NON-CE 4 Post Lifts
Colors & Graphics

MODELS:

<i>HD-9SW</i>	<i>HDS-40</i>
<i>HD-9SWX</i>	<i>HDS-40X</i>
<i>HD-14T</i>	<i>HD-9AE</i>

4/7/16

CONFIDENTIAL INFORMATION.

You may not disclose, print, copy or disseminate this information.
Unauthorized use is a violation of federal criminal law.

4 Post Lifts Product Decal Positioning



Total of 4

PN 5905311

BPK Post Branding Decal-Large_5905311.pdf:

Material: Clear Adhesive PET

Size: 4.25"W x 38"H

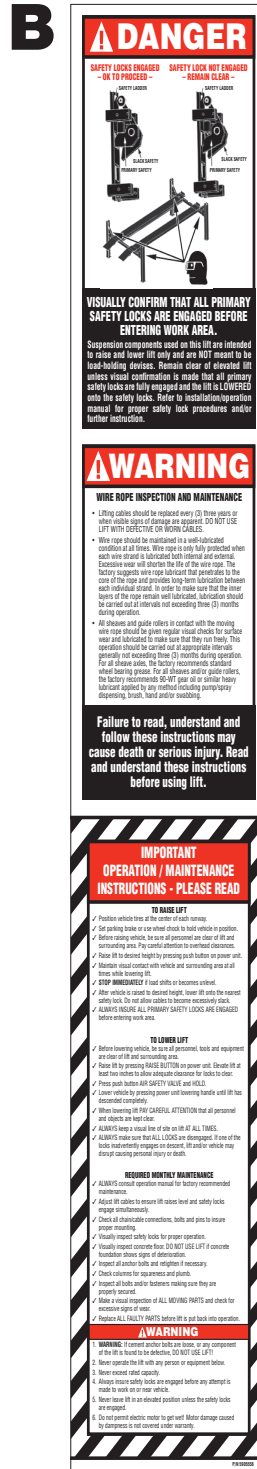
Thickness: 4 Mil

Finish: Polished

Ink: U.V. protected, Opaque White

Print Process: Silk Screen, 85 line-screen (Yellow color in file represents what should be clear PET material and SHOULD NOT print as Yellow ink. White area in file represents Opaque White ink.)

Lamination: Clear-gloss over-laminate for abrasion, chemical, and ultra violet protection



PN 5905556

4_Post_Safety_Decal.pdf:

Size: 4"W x 23"H

Material: White Vinyl Pressure Sensitive Adhesive

Thickness: 4 Mil

Ink: U.V. protected CMYK 2/C Process

Finish: Polished

Print Process: Offset Lithography - 200 line-screen or 300 p.p.i. for digital

Lamination: Clear-gloss over-laminate for abrasion, chemical, and ultra violet protection

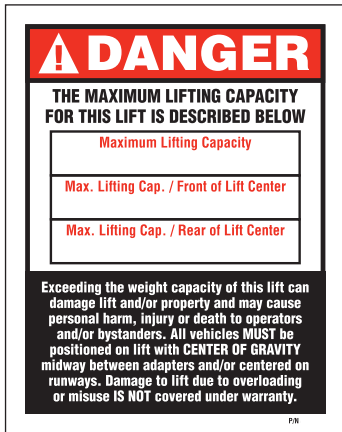


Ali_4_Post_labels.pdf:

(Order Labels from ALI)

4 Post Lifts Product Decal Positioning

***D**



P/N 5905401 - Max Cap. Danger 7k
 P/N 5905695 - Max. Cap. Danger 7500
 P/N 5905402 - Max Cap. Danger 9k
 P/N 5905557 - Max. Cap. Danger 14K
 P/N 5905406 - Max Cap. Danger 18k
 P/N 5905407 - Max. Cap. Danger 27K
 P/N 5905408 - Max. Cap. Danger 35K
 P/N 5905409 - Max. Cap. Danger 40K

***E**



P/N 5905645 - NRTL_Lifting_Cap_Label_7K
 P/N 5905700 - NRTL_Lifting_Cap_Label_7500
 P/N 5905650 - NRTL_Lifting_Cap_Label_9k
 P/N 5905665 - NRTL_Lifting_Cap_Label_14k
 P/N 5905675 - NRTL_Lifting_Cap_Label_18k
 P/N 5905680 - NRTL_Lifting_Cap_Label_27k
 P/N 5905685 - NRTL_Lifting_Cap_Label_35K
 P/N 5905690 - NRTL_Lifting_Cap_Label_40K

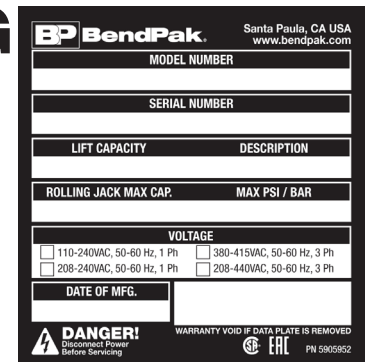
***DEPENDS ON LIFT MODEL AND CAPACITY**

F



PN 5905940

G



PN 5905952

2015_Serial_Tag-C-5905952.jpg:

Size: 3"W x 3"H

Material: Material: 2 Mil. Matte Silver Polyester (Flex-PSE)

Print using thermal transfer printer with resin ribbon

Ink: 1 Color-Black

H



PN 5905326

ALI-Gold-Label-5905326.jpg

****FOR ALI APPROVED LIFTS ONLY**

4 Post Lifts Product Decal Positioning

****FOR ALL APPROVED
LIFTS ONLY**

D, H, G, F

Front of Post
(Top to Bottom)

E, C

Back of Post
(Top to Bottom)

B

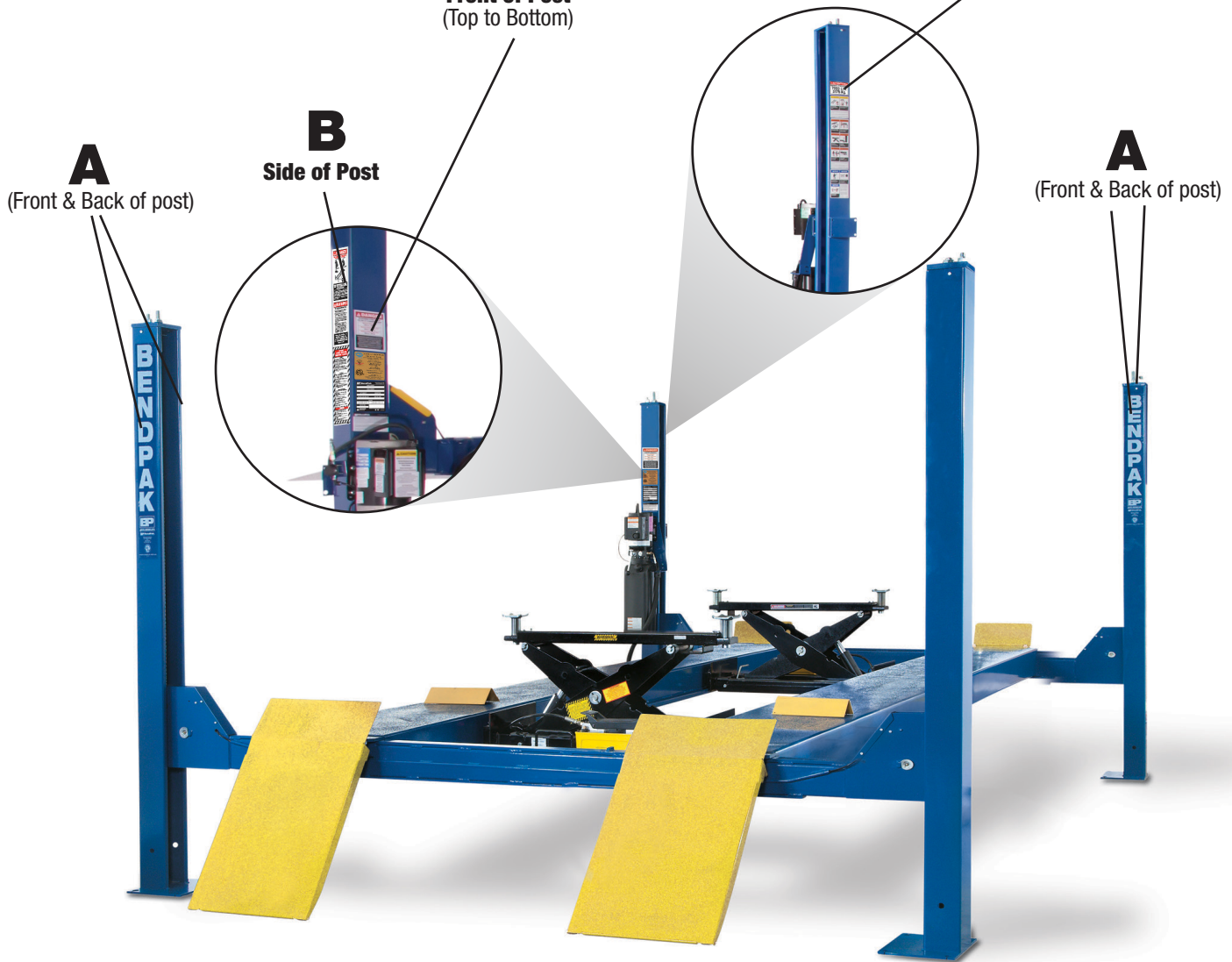
Side of Post

A

(Front & Back of post)

A

(Front & Back of post)



4 Post Lifts Packaging

BP BendPak. Santa Paula, CA USA www.bendpak.com	
MODEL NUMBER	SERIAL NUMBER
PN 5905285	

PEEL OFF INVENTORY LABEL	
MODEL NUMBER	SERIAL NUMBER

PN 5905285

Do not remove back sheet of this portion to prevent from sticking completely as shown in image.



MFD. BY BENDPAK INC.

LIFT TYPE: SURFACE MOUNT CAPACITY: MED/HVY DTY
POWER: ELECTRIC/HYDRAULIC ANCHORS: AS EQUIPPED
INSTALLATION - SEE OWNERS GUIDE OR CONTACT FACTORY

SHIPPING DAMAGE CLAIMS
WHEN THIS EQUIPMENT IS SHIPPED, TITLE PASSES TO THE PURCHASER UPON RECEIPT FROM THE CARRIER. CONSEQUENTLY, CLAIMS FOR THE MATERIAL DAMAGED IN SHIPMENT MUST BE MADE BY THE PURCHASER AGAINST THE TRANSPORTATION COMPANY AT THE TIME SHIPMENT IS RECEIVED.

PLEASE READ ALL OPERATORS/USERS MANUAL(S) PRIOR TO INSTALLATION AND OPERATION. UNDERSTAND AND COMPREHEND THE FULL CONTENTS OF EACH MANUAL(S) PRIOR TO INSTALLATION AND OPERATION. DELIVER THE MANUAL(S) TO ALL OPERATORS. FAILURE TO OPERATE THIS EQUIPMENT AS DIRECTED MAY CAUSE INJURY OR DEATH.

IMPORTANT NOTE:
BENDPAK LIFTS ARE SUPPLIED WITH CONCRETE FASTENERS MEETING THE CRITERIA AS PRESCRIBED BY ASTM E488 - 96(2003). LIFT BUYERS ARE RESPONSIBLE FOR ANY SPECIAL REGIONAL STRUCTURAL AND/OR SEISMIC ANCHORING REQUIREMENTS SPECIFIED BY ANY OTHER AGENCIES AND/OR CODES SUCH AS THE UNIFORM BUILDING CODE (UBC) AND/OR INTERNATIONAL BUILDING CODE (IBC).



INTERNAL BAR CODE - FOR FACTORY AUDIT ONLY 34086

BPK | STYOT | P20KVR | X18576 | HVY DTY/ GVR
832

THE MANUFACTURE, USE, SALE OR IMPORT OF THIS PRODUCT MAY BE SUBJECT TO ONE OR MORE UNITED STATES PATENTS, OR PENDING APPLICATIONS, OWNED BY BENDPAK, INC.

ENGINEERED BY BENDPAK INC USA

MADE IN CHINA

Serial_Tag_New-2015_Peel_Off-5905285.jpg:

Size: 3"W x 3"H

Material: 2 Mil. Matte Silver Polyester (Flex-PSE)

Print using thermal transfer printer with resin ribbon

Ink: 1 Color-Black

Manufacturer Packaging Label:

Size: 5"W x 5"H

Material: White adhesive paper

Ink: U.V. protected CMYK 2/C Process

Print Process: Offset Lithography - 200 line-screen or 300 p.p.i. for digital