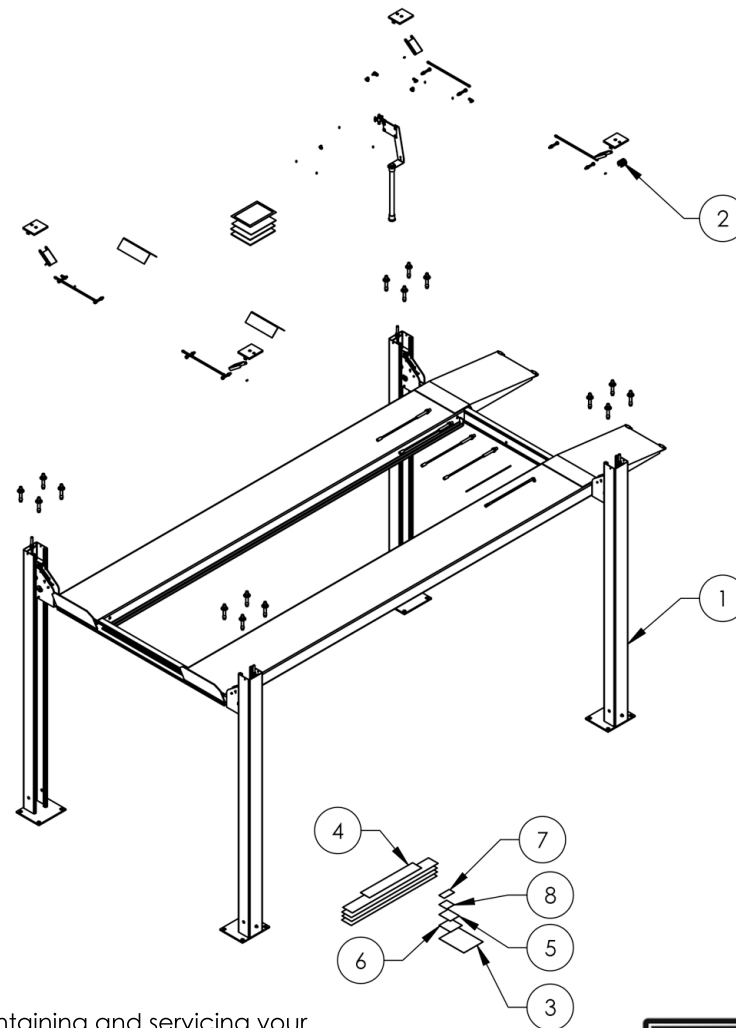


# Service Manual

## Service Parts & Diagrams

# HD-7P

**BendPak SKU 5260523**  
**HD-7P Four-Post Car Lift**  
**Version E**  
**06/02/2016**



This guide is a troubleshooting reference used for maintaining and servicing your BendPak product. It provides comprehensive information on identifying serviceable parts and components and assists in troubleshooting problems and performing assembly/disassembly procedures.



#### **BendPak, Inc. Corporate Office**

1645 Lemonwood Drive  
Santa Paula, CA 93060 USA  
Toll Free US/Canada: 1-800-253-2363  
Fax: 1-805-933-9160  
info@bendpak.com

#### **Customer Service Desk / Warranty**

Customer Service Representatives  
Office Tel: 1-805-933-9970  
Toll Free US/Canada: 1-800-253-2363  
Fax: 1-805-933-9160  
customerservice@bendpak.com

#### **Parts Orders**

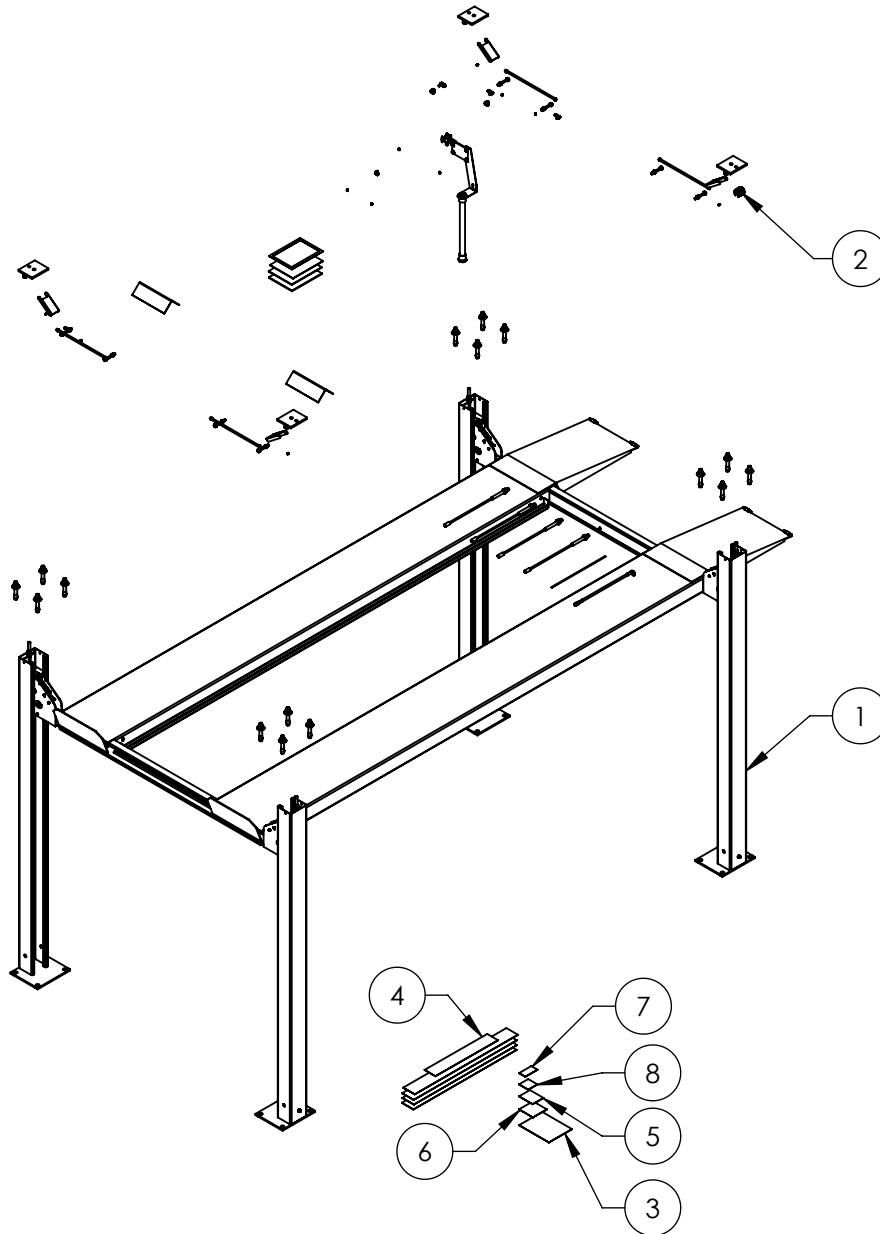
Customer Service Representatives  
Office Tel: 1-805-933-9970  
Toll Free US/Canada: 1-800-253-2363  
Fax: 1-805-933-9160  
parts@bendpak.com

#### **Domestic Sales & Service**

USA Sales Representatives  
Office Tel: 1-805-933-9970  
Toll Free US/Canada: 1-800-253-2363  
Fax: 1-805-933-9160  
sales@bendpak.com

#### **International Sales & Service**

Office Tel: 1-805-933-9970  
Exports Department: 1-805-933-9970 Ext. 192  
Toll Free US/Canada: 1-800-253-2363  
Fax: 1-805-933-9160  
bpkexports@bendpak.com


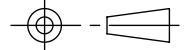



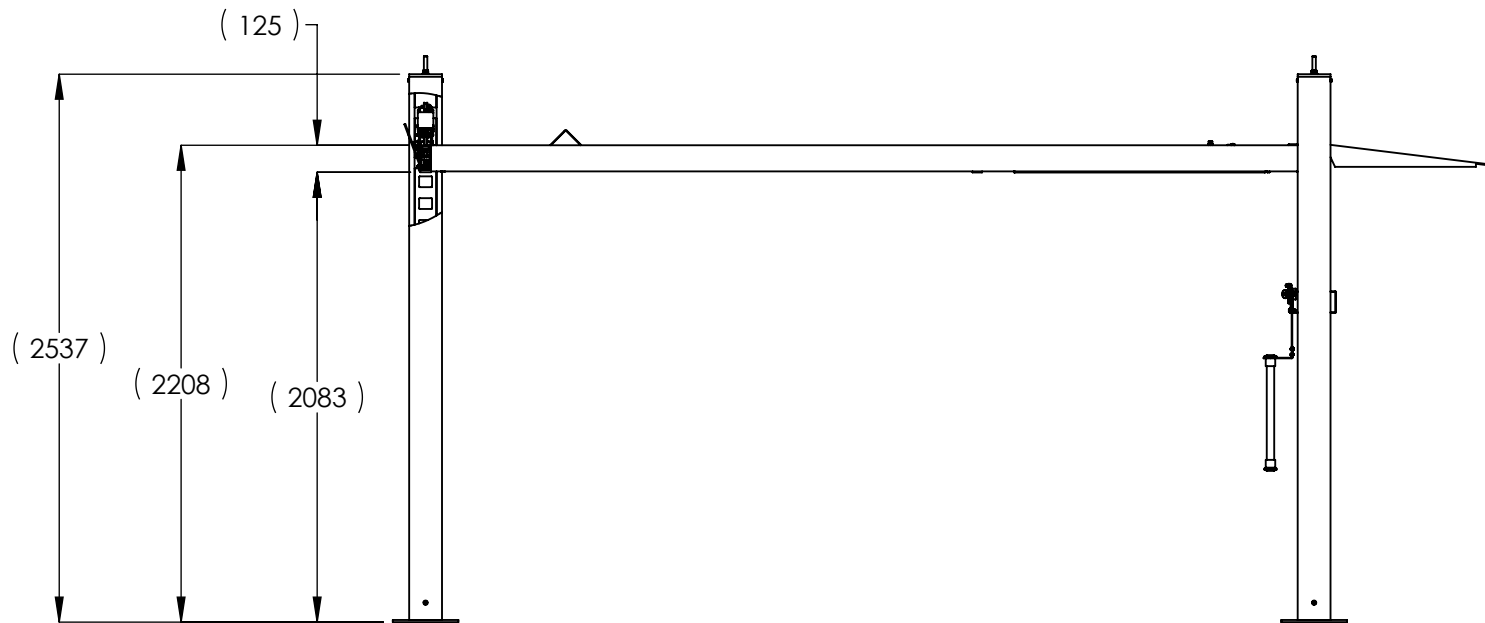
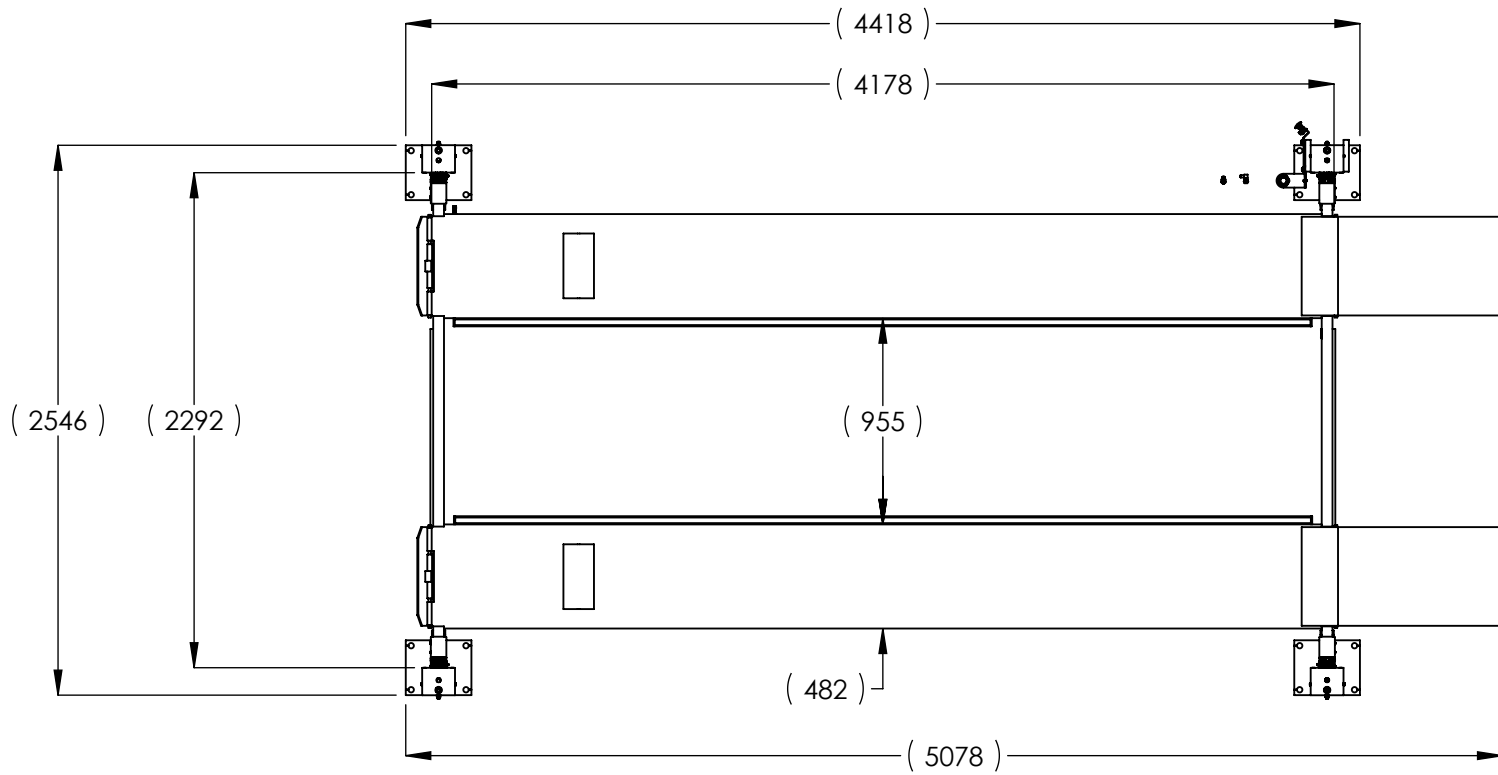
**NOTE: UNLESS OTHERWISE SPECIFIED.**


1. SEE SHIPPING INSTRUCTIONS FOR FINAL PACKAGING
2. ALL LABELS TO BE APPLIED TO POSTS AFTER PAINTING.
3. SEE ATTACHED LABEL PLACEMENT SHEET

REVISION				
REV	DESCRIPTION	DATE	EDITED BY	ECO#
C	ADDED 5905103, 5905200, 5905401, 5905465, 5905940, AND 5930605, UPDATED BOM REVISIONS	08/13/2015	TM	00683
D	REMOVED 5930605, ADDED 5905952 UPDATED BOM REVISIONS	11/24/2015	JM	00740
E	UPDATED BOM REVISIONS	12/31/2015	JM	00741

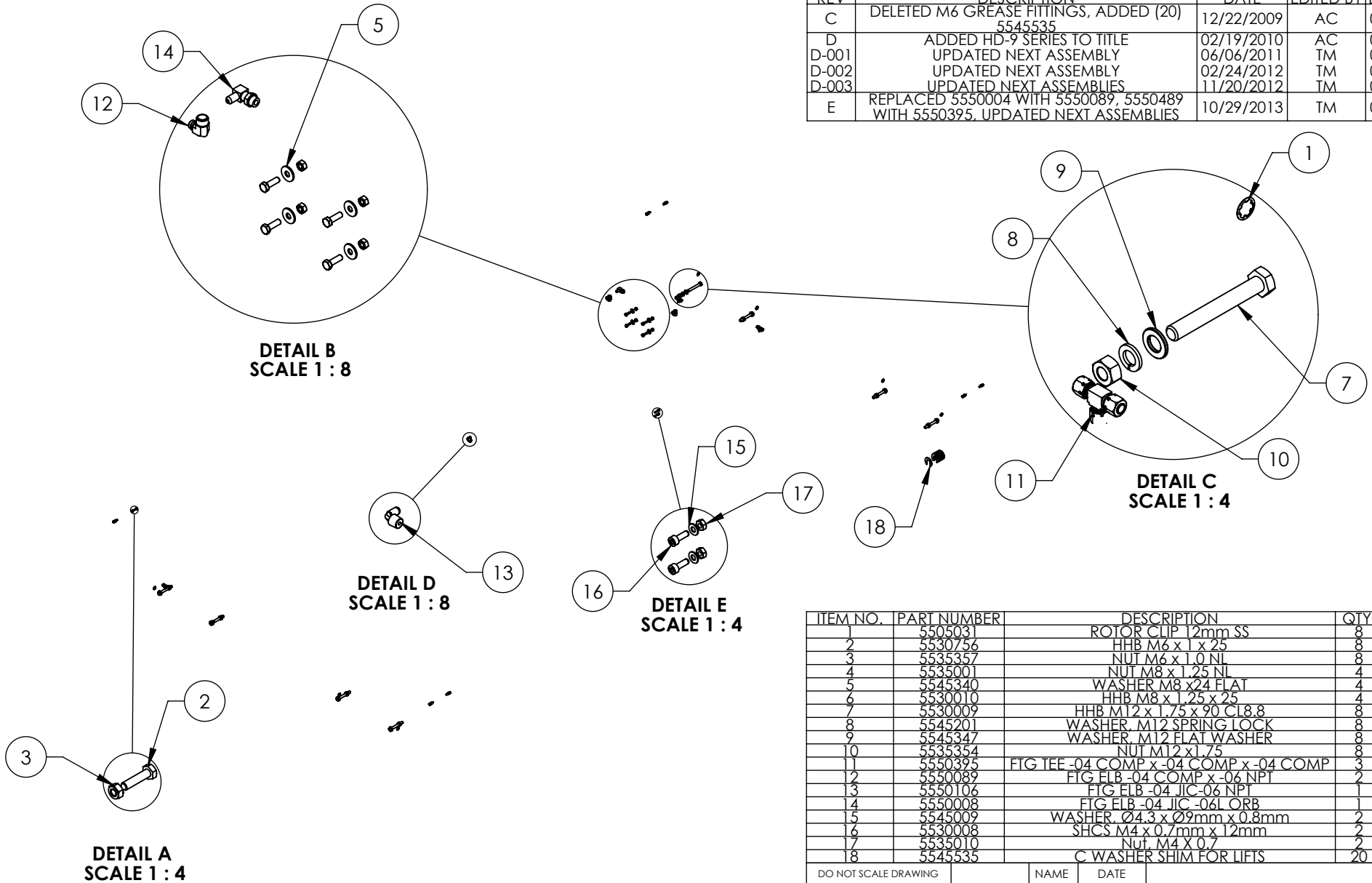
ITEM NO.	PART NUMBER	DESCRIPTION	QTY.	REV
1	5245388	HD-7P LIFT SUPERSTRUCTURE	1	E
2	5250184	PARTS BOX HD-7P	1	E
3	5905103	WARNING ALI/WL 200	1	--
4	5905200	4 POST DECAL KIT, LESS ALI	1	B
5	5905401	MAX CAP DANGER 7K	1	--
6	5905465	MANUFACTURER LABEL	1	--
7	5905940	PRODUCT DATA LABEL	1	--
8	5905952	SERIAL NUMBER INTERIOR TAG PLATE	1	--

DO NOT SCALE DRAWING		NAME	DATE	<div><div> <b>BendPak.</b> <small>MOVING AUTOMATIC SERVICE SOLUTIONS</small></div><div>1645 LEMONWOOD DR. SANTA PAULA, CA 93060</div></div>		
DRAWN		TM	08/12/2014			
CHECKED		-	-	TITLE: HD-7P PRODUCTION LIFT VER E (CE CERT)		
THIRD ANGLE PROJECTION						
<div>DIMENSIONS ARE IN MM</div> <div></div>		PROPRIETARY AND CONFIDENTIAL THE INFORMATION CONTAINED IN THIS DRAWING IS THE SOLE PROPERTY OF <b>BENDPAK INC.</b> ANY REPRODUCTION IN PART OR AS A WHOLE WITHOUT THE WRITTEN PERMISSION OF <b>BENDPAK INC.</b> IS PROHIBITED.		SIZE	DWG. NO.	REV
				A	5260523	E
				SCALE: 1:50		SHEET 1 OF 2



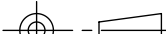


 1645 LEMONWOOD DR. SANTA PAULA, CA 93060		
<b>TITLE:</b> HD-7P PRODUCTION LIFT VER E (CE CERT)		
<b>SIZE</b>	<b>DWG. NO.</b>	<b>REV</b>
<b>A</b>	5260523	E
<b>SCALE:</b> 1:35		SHEET 2 OF 2

REVISION				
REV	DESCRIPTION	DATE	EDITED BY	ECO#
C	DELETED M6 GREASE FITTINGS, ADDED (20) 5545535	12/22/2009	AC	00326
D	ADDED HD-9 SERIES TO TITLE	02/19/2010	AC	00333
D-001	UPDATED NEXT ASSEMBLY	06/06/2011	TM	00464
D-002	UPDATED NEXT ASSEMBLY	02/24/2012	TM	00501
D-003	UPDATED NEXT ASSEMBLIES	11/20/2012	TM	00562
E	REPLACED 5550004 WITH 5550089, 5550489 WITH 5550395, UPDATED NEXT ASSEMBLIES	10/29/2013	TM	00593



ITEM NO.	PART NUMBER	DESCRIPTION	QTY.	REV
1	5505031	ROTOR CLIP 12mm SS	8	-
2	5530756	HHB M6 x 1 x 25	8	-
3	5535357	NUT M6 x 1.0 NL	8	-
4	5535001	NUT M8 x 1.25 NL	4	A
5	5545340	WASHER M8 x 24 FLAT	4	-
6	5530010	HHB M8 x 1.25 x 25	4	B
7	5530009	HHB M12 x 1.75 x 90 Cl8.8	8	-
8	5545201	WASHER M12 SPRING LOCK	8	-
9	5545347	WASHER M12 FLAT WASHER	8	-
10	5535354	NUT M12 x 1.75	8	-
11	5550395	FTG TEE -04 COMP x -04 COMP x -04 COMP	3	-
12	5550089	FTG ELB -04 COMP x -06 NPT	2	-
13	5550106	FTG ELB -04 JIC-06 NPT	1	-
14	5550008	FTG ELB -04 JIC-06L ORB	1	-
15	5545009	WASHER Ø4.3 x Ø9mm x 0.8mm	2	-
16	5530008	SHCS M4 x 0.7mm x 12mm	2	-
17	5535010	Nut M4 x 0.7	2	-
18	5545535	C WASHER SHIM FOR LIFTS	20	-

DO NOT SCALE DRAWING		NAME	DATE	 <b>BendPak.</b> 1645 LEMONWOOD DR. <small>HYDRIC AUTOMOTIVE SERVICE SOURCES</small> SANTA PAULA, CA 93060	
DIMENSIONS ARE IN MM		DRAWN	AC 08/08/2008		
	CHECKED			TITLE: HD-7/9 SERIES PARTS BAG	
	THIRD ANGLE PROJECTION 				
	MATERIAL: ---	<p><b>PROPRIETARY AND CONFIDENTIAL</b></p> <p>THE INFORMATION CONTAINED IN THIS DRAWING IS THE SOLE PROPERTY OF <b>BENDPAK INC.</b>, ANY REPRODUCTION IN PART OR AS A WHOLE WITHOUT THE WRITTEN PERMISSION OF <b>BENDPAK INC.</b> IS PROHIBITED.</p>			SIZE DWG. NO.
SIZE: ---	<b>A</b> 5174092				E
				SCALE: 1:30	SHEET 1 OF 1

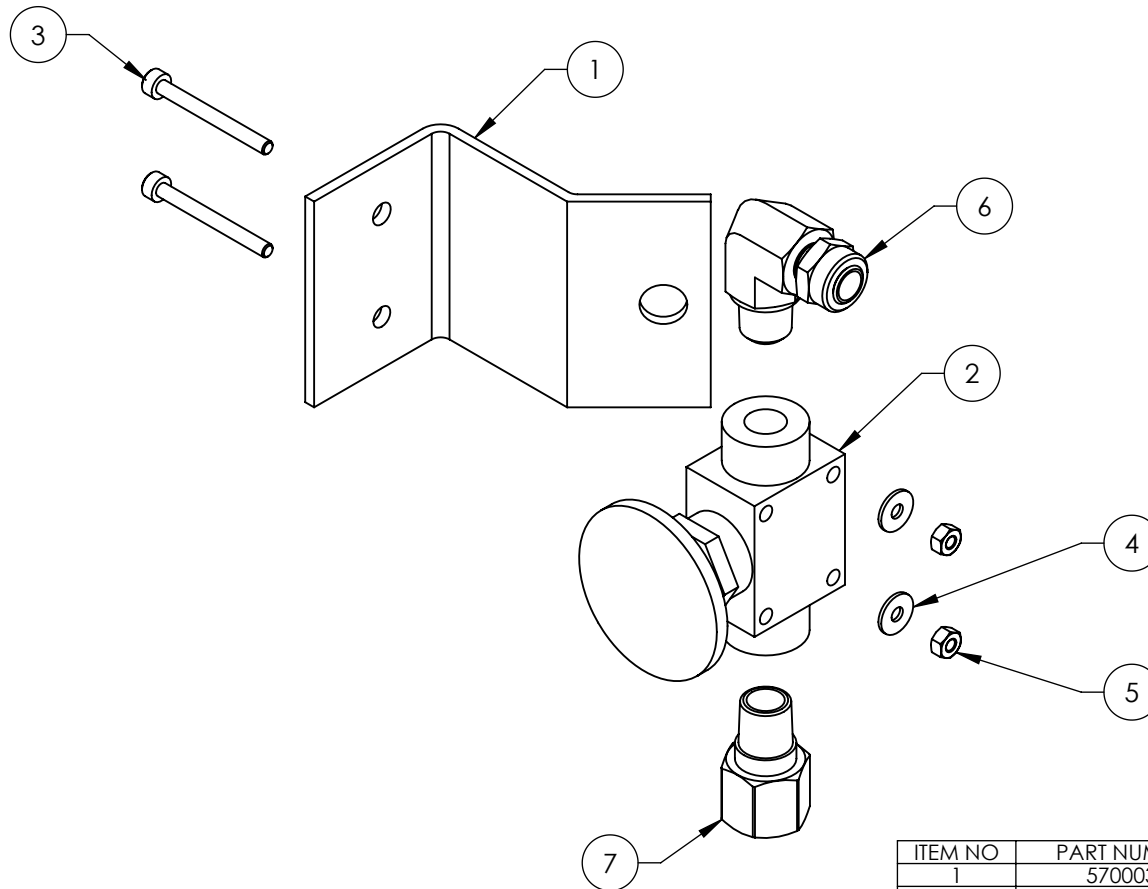
**NOTE: UNLESS OTHERWISE SPECIFIED.**

1. SEE SHIPPING INSTRUCTIONS FOR FINAL PACKAGING

NEXT ASSEMBLY
5250164
5250167
5250168
5250169
5250184
5250185
5250187
5250188
5250189



REVISION				
REV	DESCRIPTION	DATE	EDITED BY	ECO#
D	UPDATED NEXT ASSEMBLY, ADDED 5550486	02/24/2010	AC	00333
D-001	UPDATED NEXT ASSEMBLY	01/21/2011	TM	00439
D-010	UPDATED NEXT ASSEMBLIES	07/24/2013	TM	00611
E	REPLACED 5550481 WITH 5550087	10/29/2013	TM	00593
F	REPLACED 5590240 WITH 5590175, UPDATED NEXT ASSEMBLIES	05/05/2015	MR	00683



ITEM NO	PART NUMBER	DESCRIPTION	QTY	REV
1	5700031	ZERO ANGLE MTG BRACKET	1	C
2	5590175	PUSH BUTTON AIR VALVE	1	B
3	5530043	SHCS M3 x 0.5 x 30	2	-
4	5545024	WASHER M3 x 9mm	2	-
5	5535020	NUT M3 x 0.5 NL	2	-
6	5550087	FTG ELB -04 COMP x -02 NPT	1	-
7	5550486	FTG NPL -02 NPT x -04 F NPT	1	-

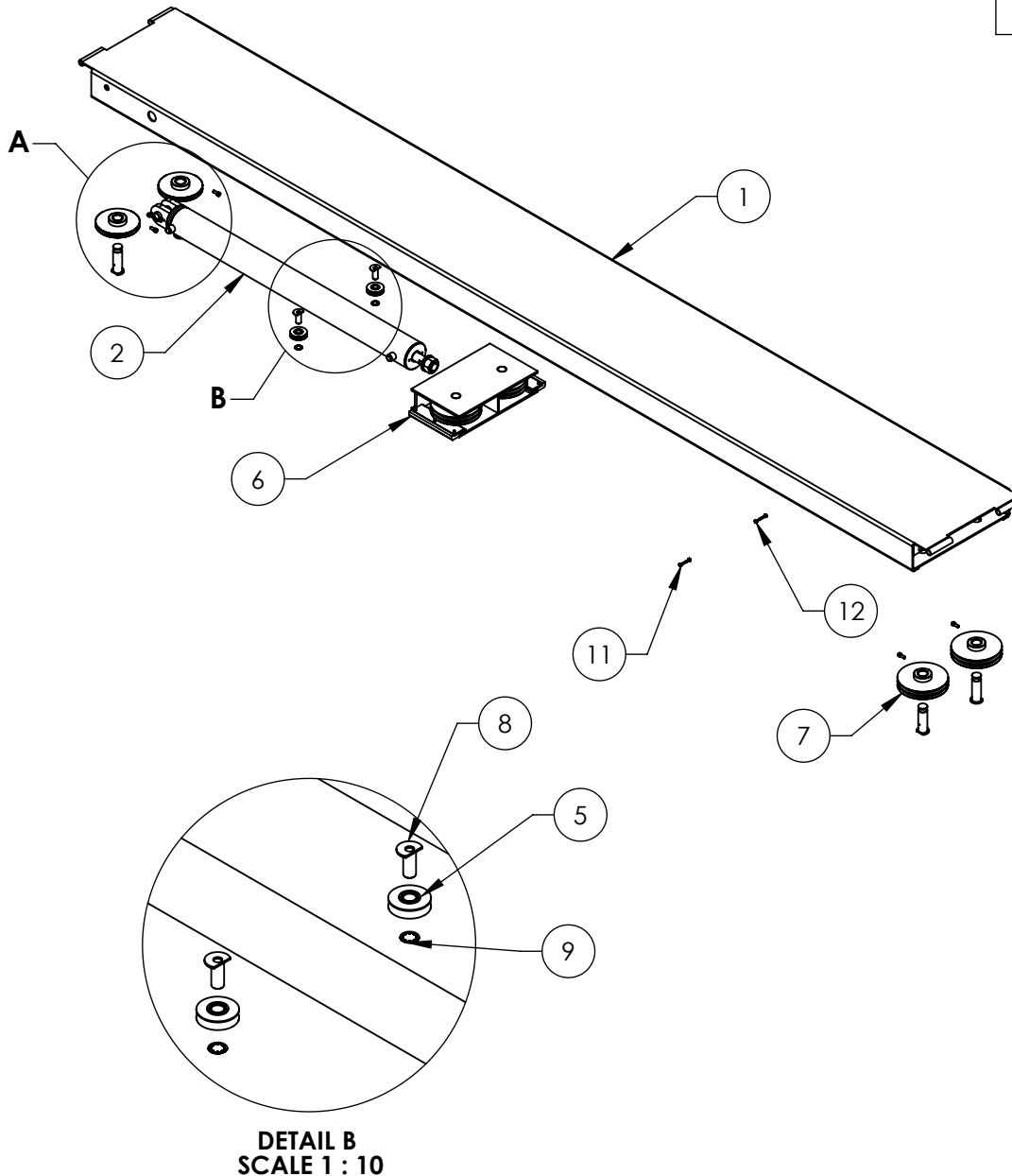
DO NOT SCALE DRAWING		NAME	DATE	<b>BendPak</b> 1645 LEMONWOOD DR. SANTA PAULA, CA 93060
		DRAWN	AC	
		CHECKED	CA	
DIMENSIONS ARE IN MM 		THIRD ANGLE PROJECTION		TITLE:
				PUSH BUTTON AIR ASSEMBLY
		<small>PROPRIETARY AND CONFIDENTIAL THE INFORMATION CONTAINED IN THIS DRAWING IS THE SOLE PROPERTY OF BENDPAK INC. ANY REPRODUCTION IN PART OR AS A WHOLE WITHOUT THE WRITTEN PERMISSION OF BENDPAK INC. IS PROHIBITED.</small>		SIZE DWG. NO.
		A		5215096
				REV
				F
		SCALE: 2:3		SHEET 1 OF 1

**NOTE: UNLESS OTHERWISE SPECIFIED.**




1. ASSEMBLE ITEMS AS SHOWN

NEXT ASSEMBLY
HD/HDS/HDSO
SERIES
5250118
5250249
5250364

REVISION				
REV	DESCRIPTION	DATE	EDITED BY	ECO#
K	REMOVED 5535027, 5545007 AND 5505350	12/30/2014	MR	00675
L	UPDATED BOM REVISIONS	04/28/2015	MR	00683
M	REMOVED (8) 5550025, UPDATED BOM REVISIONS	11/24/2015	JM	00740



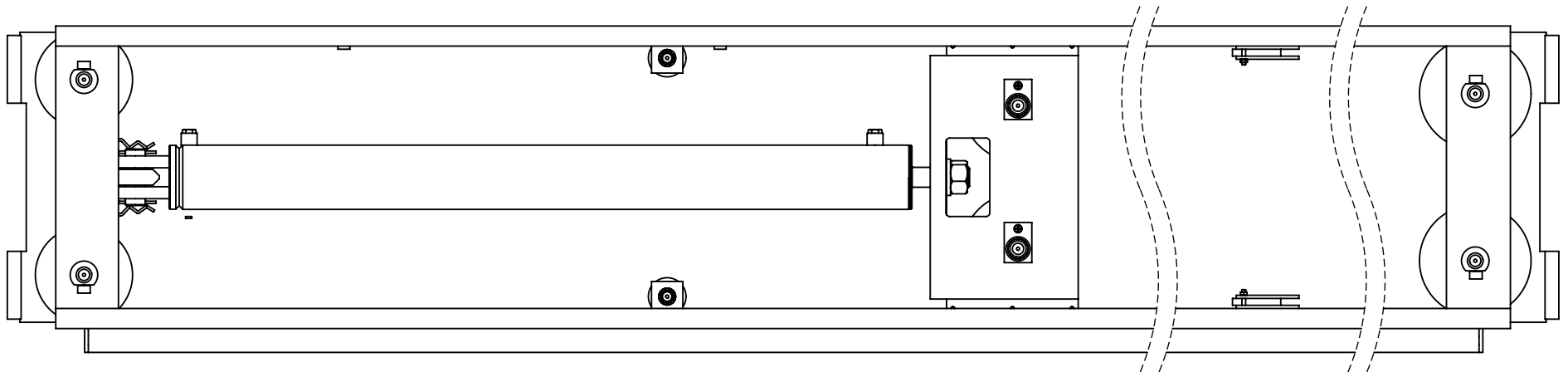
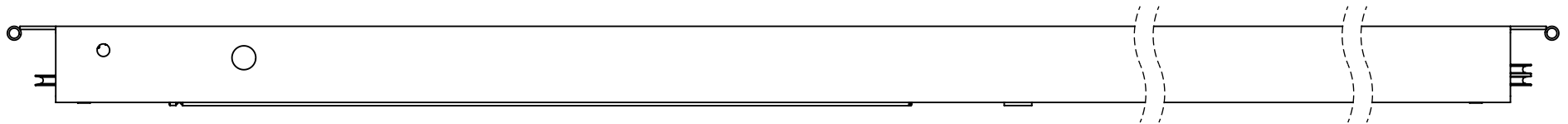
ITEM NO.	PART NUMBER	DESCRIPTION	QTY	REV
1	5600202	HD-7P POWER SIDE RAMP WELDMENT	1	F
2	5502112	CYLINDER ASSEMBLY Ø3.5 x 41	1	D
3	5215122	HD-7/7500/9 SERIES SINGLE SHEAVE ROLLER ASSEMBLY	2	D
4	5600900	HD-7/7500/9 SERIES RAMP SHEAVE SHAFT WELDMENT	4	D
5	5215060	HD-7P DIRECTION SHEAVE ASSEMBLY	2	C
6	5215186	HD-7 SERIES PULL BOX ASSEMBLY	1	C
7	5215185	HD-7 SERIES TWIN SHEAVE ASSEMBLY	2	B
8	5600301	HD-7 SERIES DIRECTIONAL SHEAVE PIN WELDMENT	2	B
9	5505032	ROTOR CLIP 18mm SS	2	-
10	5530773	SHCS M8x1.25x20mm L	4	-
11	5530047	HHB, M6 x 1 x 30mm L	2	-
12	5535357	NUT M6 x 1.0 NL	2	-


DO NOT SCALE DRAWING		NAME	DATE	<div><div> <b>BendPak.</b> <small>MOVING AUTOMATIC SERVICE SOLUTIONS</small></div><div>1645 LEMONWOOD DR. SANTA PAULA, CA 93060</div></div>		
DRAWN		GJZ	10/20/2008			
CHECKED				TITLE: HD-7P POWER SIDE RAMP ASSEMBLY		
THIRD ANGLE PROJECTION						
DIMENSIONS ARE IN MM		<div><div></div><div><b>PROPRIETARY AND CONFIDENTIAL</b> THE INFORMATION CONTAINED IN THIS DRAWING IS THE SOLE PROPERTY OF <b>BENDPAK INC.</b> ANY REPRODUCTION IN PART OR AS A WHOLE WITHOUT THE WRITTEN PERMISSION OF <b>BENDPAK INC.</b> IS PROHIBITED.</div></div>		SIZE	DWG. NO.	REV
Y				<b>A</b>	5215170	M
		SCALE: 1:25			SHEET 1 OF 2	

**NOTE: UNLESS OTHERWISE SPECIFIED.**

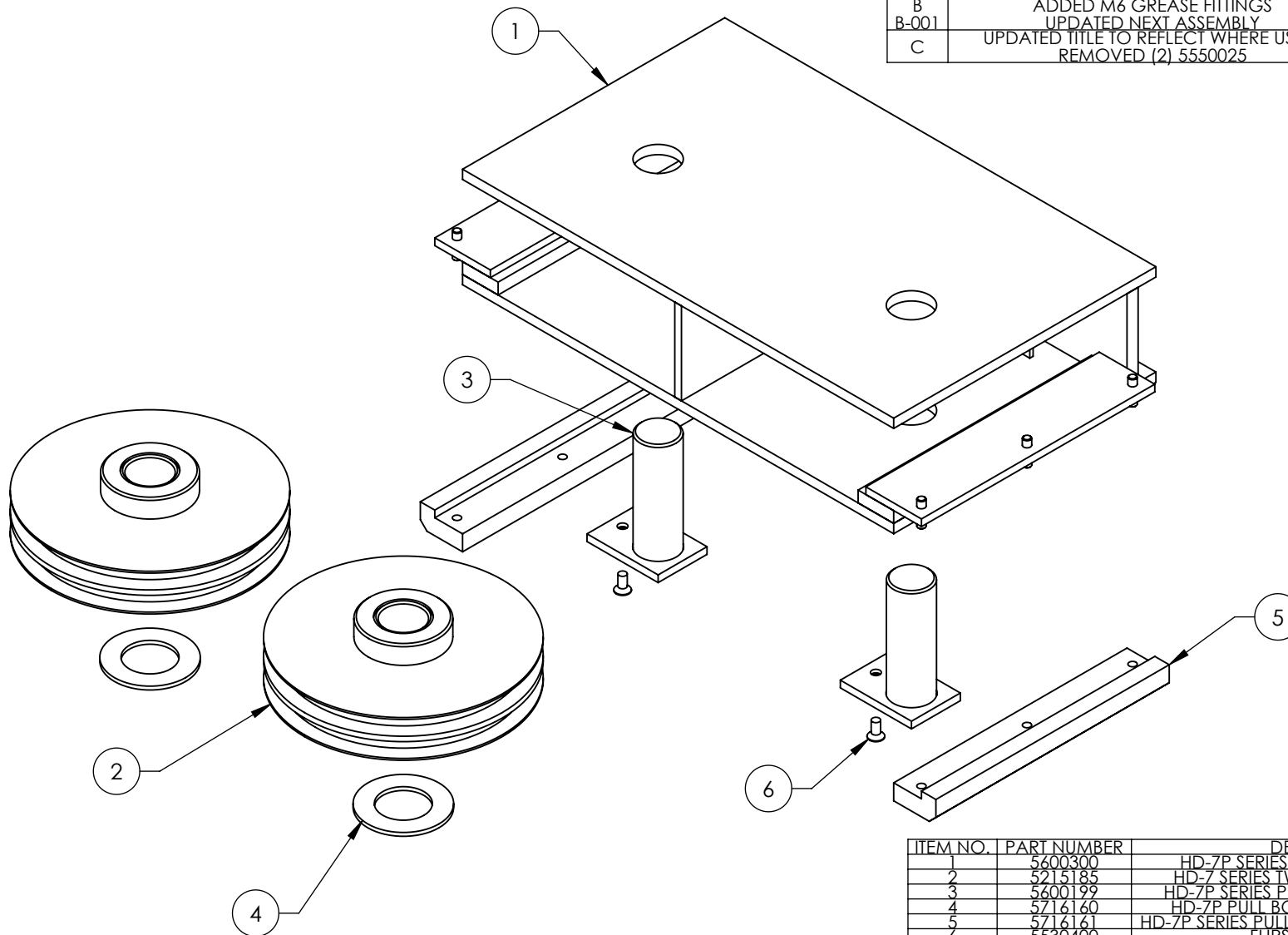
- SEE SHIPPING INSTRUCTIONS FOR FINAL PACKAGING
- ASSEMBLE ITEMS AS SHOWN

NEXT ASSEMBLY
5245384
5245388



 <b>BendPak.</b> HYDRATING AUTOMATIC SERVICE EQUIPMENT		1645 LEMONWOOD DR. SANTA PAULA, CA 93060	
TITLE: HD-7P POWER SIDE RAMP ASSEMBLY			
SIZE	DWG. NO.		REV
<b>A</b>	5215170		<b>M</b>
SCALE: 1:10			SHEET 2 OF 2

REVISION				
REV	DESCRIPTION	DATE	EDITED BY	ECO#
A	PRODUCTION RELEASE, DERIVED FROM 5215061	11/18/2008	AC	00174
B	ADDED M6 GREASE FITTINGS	12/22/2009	AC	00326
B-001	UPDATED NEXT ASSEMBLY	07/13/2012	TM	00534
C	UPDATED TITLE TO REFLECT WHERE USED, REMOVED (2) 5550025	11/24/2015	JM	00740



ITEM NO.	PART NUMBER	DESCRIPTION	QTY.	REV
1	5600300	HD-7P SERIES PULL BOX WELDMENT	1	A
2	5215185	HD-7 SERIES TWIN SHEAVE ASSEMBLY	2	B
3	5600199	HD-7P SERIES PULLBOX PIN WELDMENT	2	A
4	5716160	HD-7P PULL BOX SHEAVE WEAR RING	2	A
5	5716161	HD-7P SERIES PULLBOX PLASTIC SLIDE BLOCK	2	C
6	5530400	FHPS M6 x 1.0 x 13	2	-

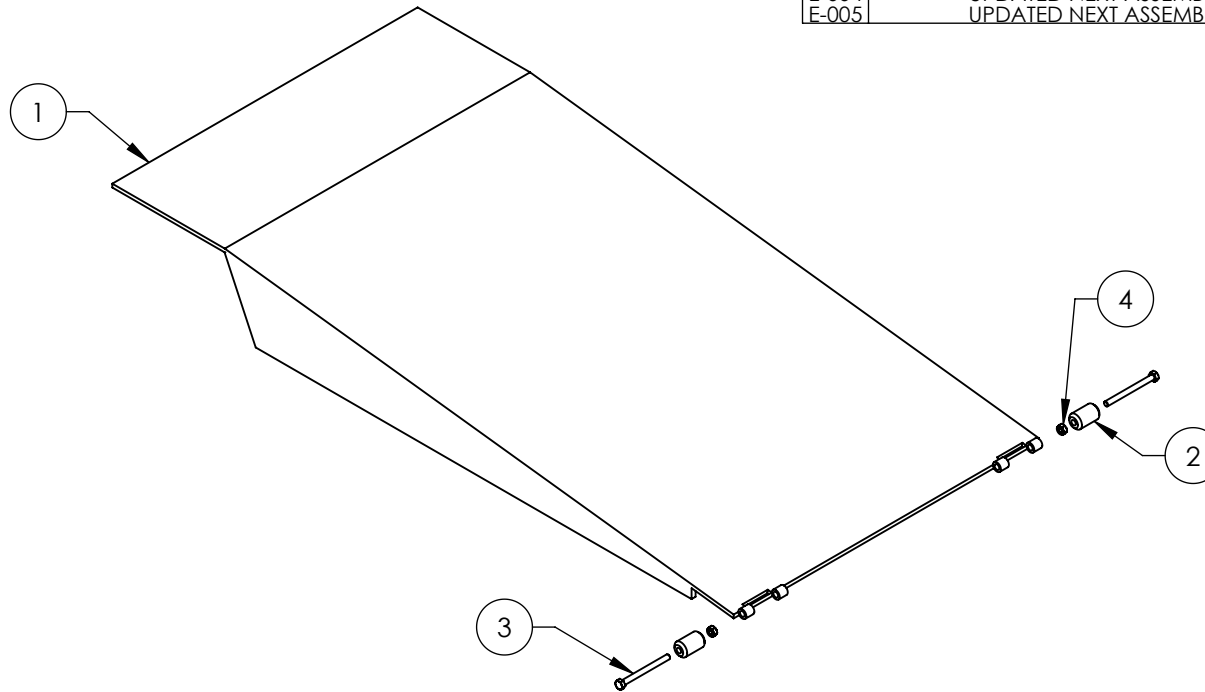
DO NOT SCALE DRAWING		NAME	DATE
DRAWN		AC	11/18/2008
CHECKED			
DIMENSIONS ARE IN MM		THIRD ANGLE PROJECTION	
		<b>Proprietary and Confidential</b> <small>THE INFORMATION CONTAINED IN THIS DRAWING IS THE SOLE PROPERTY OF BENDPAK INC. ANY REPRODUCTION IN PART OR AS A WHOLE WITHOUT THE WRITTEN PERMISSION OF BENDPAK INC. IS PROHIBITED.</small>	
		<b>BendPak.</b> 1645 LEMONWOOD DR. <small>MOVING AND MORE SERVICE SOURCES</small> SANTA PAULA, CA 93060	
TITLE:		HD-7 SERIES PULL BOX ASSEMBLY	
SIZE	DWG. NO.	REV	
A	5215186	C	
SCALE: 1:4			SHEET 1 OF 1

**NOTE: UNLESS OTHERWISE SPECIFIED.**

1. ASSEMBLE ITEMS AS SHOWN

NEXT ASSEMBLY
5215170
5215171

REVISION				
REV	DESCRIPTION	DATE	EDITED BY	ECO#
C	UPDATED TITLE TO REFLECT WHERE USED UPDATED NEXT ASSEMBLY	02/25/2010	AC	00333
D	UPDATED TITLE TO REFLECT WHERE USED UPDATED BOM REVISIONS REPLACED 5535112 WITH 5535357	06/10/2010	AC	00366
D-001	UPDATED NEXT ASSEMBLY	06/06/2011	TM	00464
D-002	UPDATED NEXT ASSEMBLY	10/27/2011	TM	00487
E	UPDATED BOM REVISION	08/22/2012	TM	00541
E-001	UPDATED NEXT ASSEMBLY	11/19/2012	TM	00562
E-002	UPDATED NEXT ASSEMBLY	05/20/2013	TM	00593
E-003	UPDATED NEXT ASSEMBLY	11/20/2013	TM	00626
E-004	UPDATED NEXT ASSEMBLY	06/10/2014	TM	00648
E-005	UPDATED NEXT ASSEMBLY	08/14/2014	TM	00664



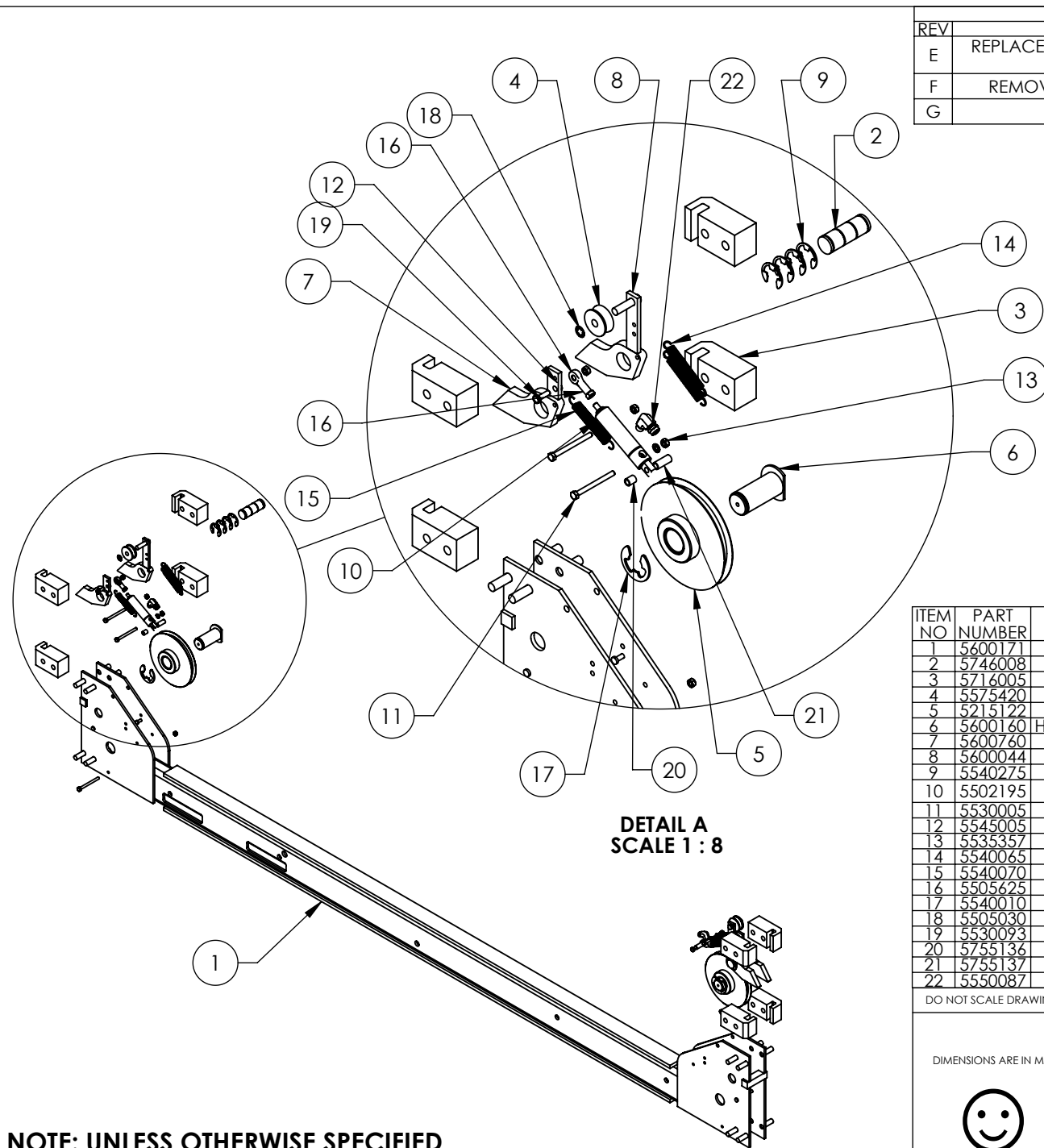
ITEM NO	PART NUMBER	DESCRIPTION	QTY	REV
1	5600891	HD-7500BL/7500BLX/ 9/9N/9NX/9ST/9STX/9XW DRIVE UP RAMP WELDMENT	1	D
2	5716149	HD-7500/9, HD/S-14 SERIES DRIVE UP RAMP PLASTIC ROLLER	2	F
3	5530005	HHB M6 x 1 x 70	2	-
4	5535357	NUT M6 x 1.0 NL	2	-

NEXT ASSEMBLY
5245275
5245381
5245382
5245383
5245384
5245385
5245386
5245388
5245391
5245392
5245393
5245395
5245396

DO NOT SCALE DRAWING		NAME	DATE	1645 LEMONWOOD DR. SANTA PAULA, CA 93060	
DIMENSIONS ARE IN MM		DRAWN	AC		
		CHECKED		TITLE: HD-7500BL/BLX, 9/ST/STX/XW DRIVE UP RAMP ASSEMBLY SIZE DWG. NO. <b>A</b> 5215193 REV <b>F</b>	
		THIRD ANGLE PROJECTION			
		PROPRIETARY AND CONFIDENTIAL THE INFORMATION CONTAINED IN THIS DRAWING IS THE SOLE PROPERTY OF BENDPAK INC. ANY REPRODUCTION IN PART OR AS A WHOLE WITHOUT THE WRITTEN PERMISSION OF BENDPAK INC. IS PROHIBITED.		SCALE: 1:8	
				SHEET 1 OF 1	

**NOTE: UNLESS OTHERWISE SPECIFIED.**

- SEE SHIPPING INSTRUCTIONS FOR FINAL PACKAGING
- ASSEMBLE ITEMS AS SHOWN



**NOTE: UNLESS OTHERWISE SPECIFIED.**

1. SEE SHIPPING INSTRUCTIONS FOR FINAL PACKAGING
2. ASSEMBLE ITEMS AS SHOWN

NEXT ASSEMBLY  
5245386  
5245388

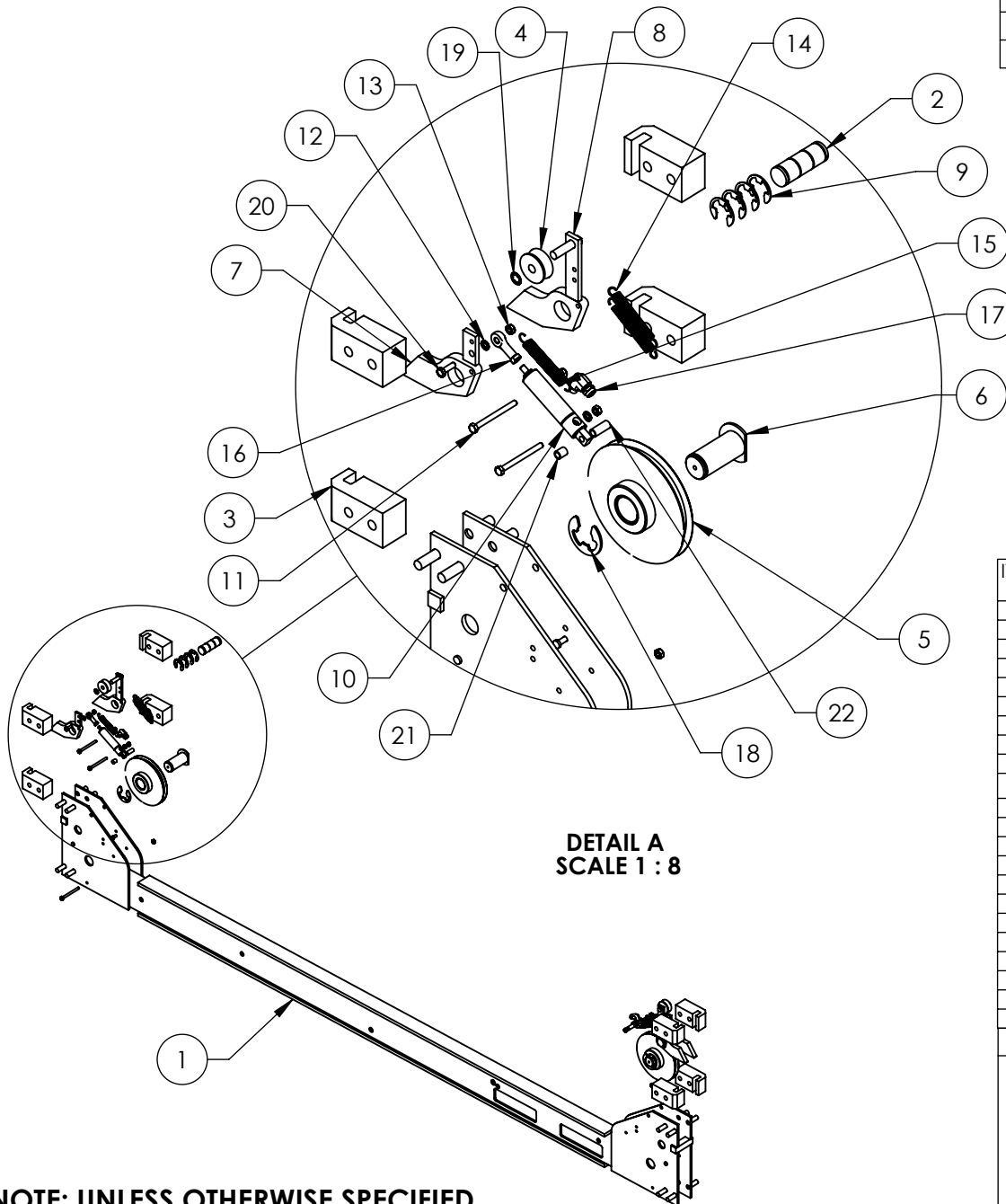
REVISION				
REV	DESCRIPTION	DATE	EDITED BY	ECO#
E	REPLACED 5545026 WITH 5545005, UPDATED BOM REVISION	03/19/2015	TM	00683
F	REMOVED (2) 5716630 AND (2) 5550025	11/24/2015	JM	00740
G	UPDATED BOM REVISIONS	12/31/2015	JM	00741

ITEM NO	PART NUMBER	DESCRIPTION	QTY	REV
1	5600171	HD-7P/7PXN SMALL WINDOW CROSSTUBE WELDMENT	1	M
2	5746008	HD/HDS-7/7500/9/14, HDSO-14 SAFETY PIN	2	E
3	5716005	HD-7/7500/9/14/HDSO-14 PLASTIC SLIDE BLOCK	8	J
4	5575420	HD-7/7500/9 SERIES SAFETY ROLLER	2	C
5	5215122	HD-7/7500/9 SERIES SINGLE SHEAVE ROLLER ASSEMBLY	2	D
6	5600160	HD-7/7500/9 SERIES CROSSTUBE SHEAVE SHAFT WELDMENT	2	E
7	5600760	HD/HDS LIGHT DUTY SERIES SAFETY WELDMENT	2	B
8	5600044	HD/HDS LIGHT DUTY SERIES SLACK SAFETY WELDMENT	2	F
9	5540275	E RING Ø25mm OD DIN 6799 0250	8	-
10	5502195	AIR CYLINDER, Ø19mm x 25 STROKE	2	-
11	5530005	HHB M6 x 1 x 70	6	-
12	5545005	M6 FLAT WASHER	4	-
13	5535357	NUT M6 x 1.0 NL	8	-
14	5540065	SPRING Ø13mm x 90mm, SLACK SAFETY	4	A
15	5540070	SPRING Ø13mm x 89mm, AIR CYLINDER	2	B
16	5505625	FEMALE ROD END M6 x 33mm	2	-
17	5540010	E RING Ø32mm OD DIN 6799	2	-
18	5505030	ROTOR CLIP 10mm SS	2	-
19	5530093	HHB M6 x 1 x 20	2	-
20	5755136	HD AIR CYLINDER SPACER 12mm	2	B
21	5755137	HD AIR CYLINDER SPACER 25mm	2	B
22	5550087	FTG ELB -04 COMP x-02 NPT	2	-

DO NOT SCALE DRAWING		NAME	DATE
DIMENSIONS ARE IN MM		DRAWN	TM 04/29/2013
		CHECKED	CA 09/01/2015
		THIRD ANGLE PROJECTION	
		1645 LEMONWOOD DR. SANTA PAULA, CA 93060	
		TITLE: HD-7P/7PXN/9PL CROSSTUBE ASSEMBLY, SMALL WINDOW	
SIZE	DWG. NO.	REV	
A	5215603	G	
SCALE: 1:16			SHEET 1 OF 1

PROPRIETARY AND CONFIDENTIAL  
THE INFORMATION CONTAINED IN THIS DRAWING IS THE SOLE PROPERTY OF BENDPAK INC. ANY REPRODUCTION IN PART OR AS A WHOLE WITHOUT THE WRITTEN PERMISSION OF BENDPAK INC. IS PROHIBITED.

REVISION				
REV	DESCRIPTION	DATE	EDITED BY	ECO#
E	REPLACED 5545026 WITH 5545005, UPDATED BOM REVISION	03/19/2015	TM	00683
F	REMOVED (2) 5716630 AND (2) 5550025	11/24/2015	JM	00740
G	UPDATED BOM REVISIONS	12/31/2015	JM	00741



DETAIL A  
SCALE 1 : 8

**NOTE: UNLESS OTHERWISE SPECIFIED.**

1. SEE SHIPPING INSTRUCTIONS FOR FINAL PACKAGING
2. ASSEMBLE ITEMS AS SHOWN

ITEM NO	PART NUMBER	DESCRIPTION	QTY	REV
1	5600170	HD-7P/7PXN LARGE WINDOW CROSSTUBE WELDMENT	1	M
2	5746008	HD/HDS-7/7500/9/14, HDSO-14 SAFETY PIN	2	E
3	5716005	HD-7/7500/9/14/HDSO-14 PLASTIC SLIDE BLOCK	8	J
4	5575420	HD-7/7500/9 SERIES SAFETY ROLLER	2	C
5	5215122	HD-7/7500/9 SERIES SINGLE SHEAVE ROLLER ASSEMBLY	2	D
6	5600160	HD-7/7500/9 SERIES CROSSTUBE SHEAVE SHAFT WELDMENT	2	E
7	5600760	HD/HDS LIGHT DUTY SERIES SAFETY WELDMENT	2	B
8	5600044	HD/HDS LIGHT DUTY SERIES SLACK SAFETY WELDMENT	2	F
9	5540275	E RING Ø25mm OD DIN 6799 0250	8	-
10	5502195	AIR CYLINDER, Ø19mm x 25 STROKE	2	-
11	5530005	HHB M6 x 1 x 70	6	-
12	5545005	M6 FLAT WASHER	4	-
13	5535357	NUT M6 x 1.0 NL	8	-
14	5540065	SPRING Ø13mm x 90mm, SLACK SAFETY	4	A
15	5540070	SPRING Ø13mm x 89mm, AIR CYLINDER	2	B
16	5505625	FEMALE ROD END M6 x 33mm	2	-
17	5550087	FTG ELB -04 COMP x -02 NPT	2	-
18	5540010	E RING Ø32mm OD DIN 6799	2	-
19	5505030	ROTOR CLIP 10mm SS	2	-
20	5530093	HHB M6 x 1 x 20	2	-
21	5755136	HD AIR CYLINDER SPACER 12mm	2	B
22	5755137	HD AIR CYLINDER SPACER 25mm	2	B

DO NOT SCALE DRAWING

NAME DATE

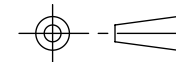
DRAWN TM 04/30/2013

CHECKED CA 09/01/2015

DIMENSIONS ARE IN MM



THIRD ANGLE PROJECTION



PROPRIETARY AND CONFIDENTIAL  
THE INFORMATION CONTAINED IN THIS DRAWING IS  
THE SOLE PROPERTY OF BENDPAK INC. ANY  
REPRODUCTION IN PART OR AS A WHOLE WITHOUT  
THE WRITTEN PERMISSION OF BENDPAK INC. IS  
PROHIBITED.

**BendPak** 1645 LEMONWOOD DR.  
SANTA PAULA, CA 93060

TITLE:  
HD-7P/7PXN CROSSTUBE  
ASSEMBLY, LARGE WINDOW

SIZE DWG. NO. REV

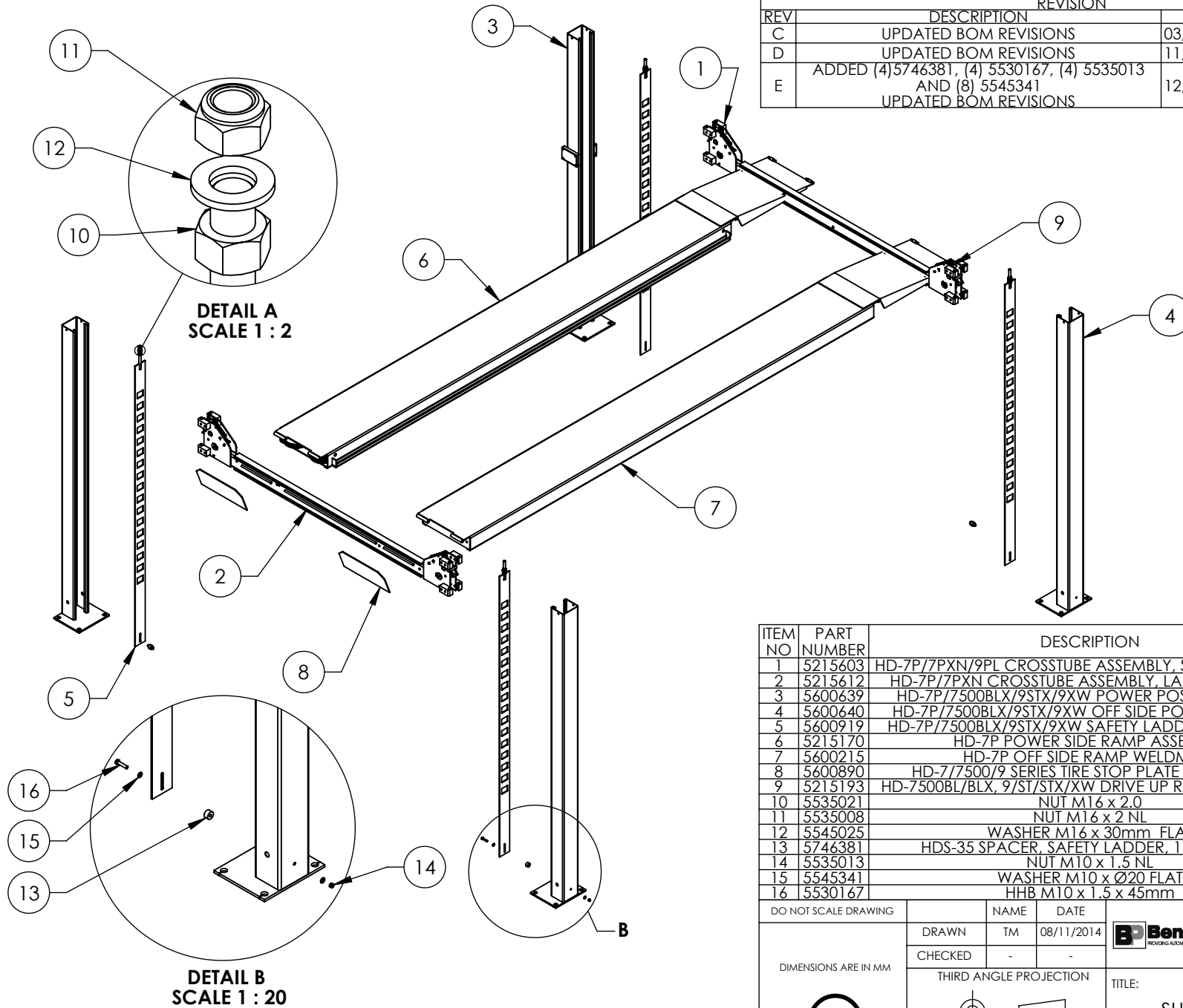
A 5215612 G

SCALE: 1:20

SHEET 1 OF 1

NEXT ASSEMBLY  
5245386  
5245388

REVISION		DATE	EDITED BY	ECO#
REV	DESCRIPTION			
C	UPDATED BOM REVISIONS	03/19/2015	MR	00683
D	UPDATED BOM REVISIONS	11/24/2015	JM	00740
E	ADDED (4) 5746381, (4) 5530167, (4) 5535013 AND (8) 5545341 UPDATED BOM REVISIONS	12/31/2015	JM	00741



ITEM NO	PART NUMBER	DESCRIPTION	QTY	REV
1	5215603	HD-7P/7PXN/9PL CROSSTUBE ASSEMBLY, SMALL WINDOW	1	G
2	5215612	HD-7P/7PXN CROSSTUBE ASSEMBLY, LARGE WINDOW	1	G
3	5600639	HD-7P/7500BLX/9STX/9XW POWER POST WELDMENT	1	C
4	5600640	HD-7P/7500BLX/9STX/9XW OFF SIDE POST WELDMENT	3	C
5	5600919	HD-7P/7500BLX/9STX/9XW SAFETY LADDER WELDMENT	4	B
6	5215170	HD-7P POWER SIDE RAMP ASSEMBLY	1	M
7	5600215	HD-7P OFF SIDE RAMP WELDMENT	1	D
8	5600890	HD-7/7500/9 SERIES TIRE STOP PLATE WELDMENT	2	F
9	5215193	HD-7500BL/BLX, 9/ST/STX/XW DRIVE UP RAMP ASSEMBLY	2	F
10	5535021	NUT M16 x 2.0	4	-
11	5535008	NUT M16 x 2 NL	4	-
12	5545025	WASHER M16 x 30mm FLAT	4	-
13	5746381	HDS-35 SPACER, SAFETY LADDER, 17.5mm LG	4	A
14	5535013	NUT M10 x 1.5 NL	4	-
15	5545341	WASHER M10 x Ø20 FLAT	8	-
16	5530167	HHB M10 x 1.5 x 45mm	4	-

DO NOT SCALE DRAWING		NAME	DATE
DRAWN		TM	08/11/2014
CHECKED		-	-
THIRD ANGLE PROJECTION			
		<b>BendPak</b> 1645 LEMONWOOD DR. SANTA PAULA, CA 93060	
DIMENSIONS ARE IN MM		TITLE: HD-7P LIFT SUPERSTRUCTURE SIZE DWG. NO. 5245388 REV E	
PROPRIETARY AND CONFIDENTIAL THE INFORMATION CONTAINED IN THIS DRAWING IS THE SOLE PROPERTY OF BENDPAK INC. ANY REPRODUCTION IN PART OR AS A WHOLE WITHOUT THE WRITTEN PERMISSION OF BENDPAK INC. IS PROHIBITED.		SCALE: 1:40 SHEET 1 OF 1	

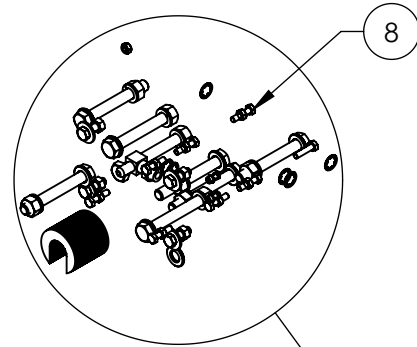
**NOTE: UNLESS OTHERWISE SPECIFIED.**

- SEE SHIPPING INSTRUCTIONS FOR FINAL PACKAGING
- THREAD M16 HARDWARE ONTO LADDER BOLTS AS SHOWN

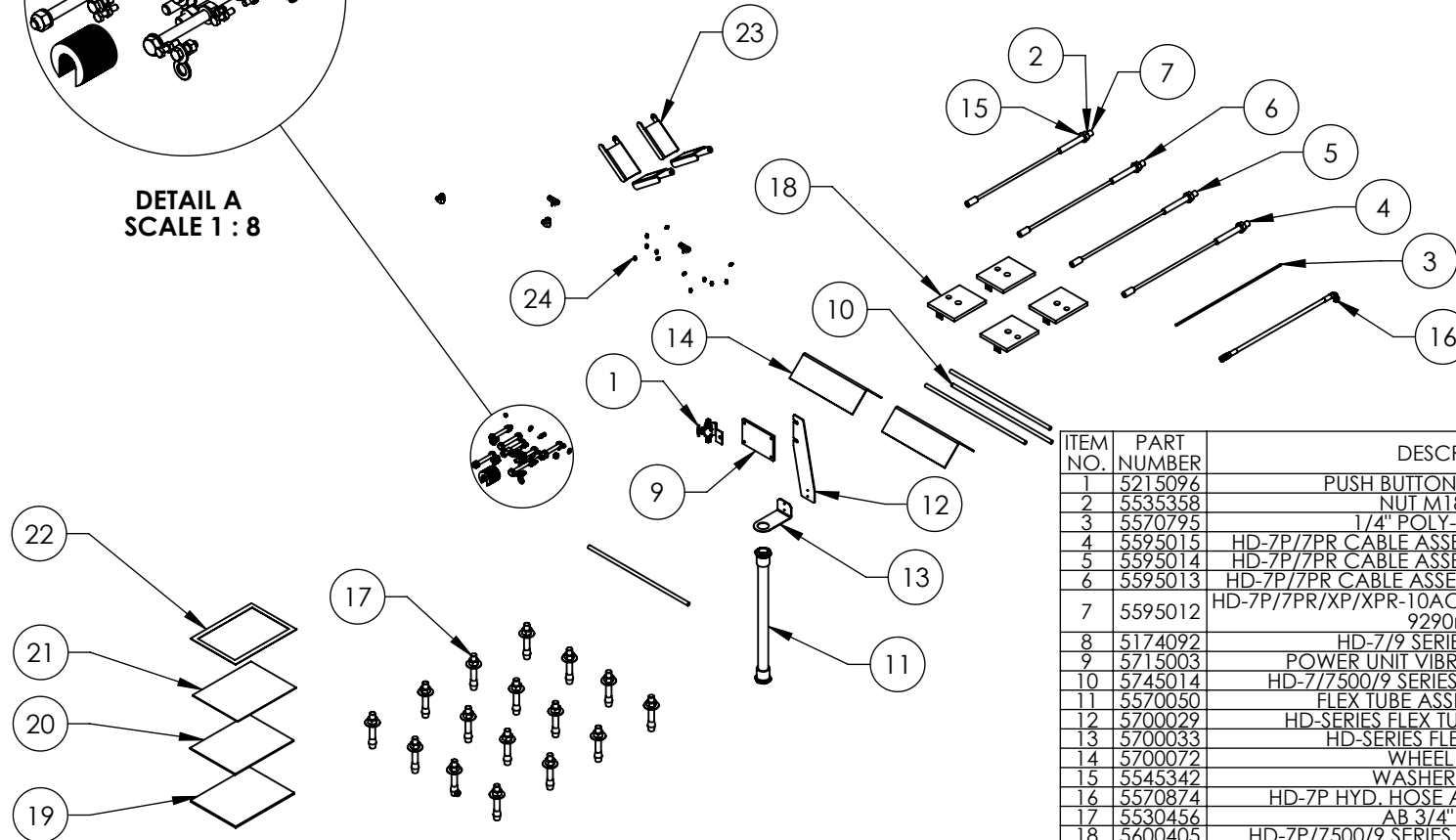
NEXT ASSEMBLY  
5260523



REVISION				
REV	DESCRIPTION	DATE	EDITED BY	ECO#
C	UPDATED BOM REVISION	12/30/2014	MR	00675
D	REMOVED 5905103, 5905200, 5905401, 5905465, 5905940, AND 5930605, UPDATED BOM REVISION	08/13/2015	TM	00683
E	REMOVED 5900151 ADDED (4) 5716630 AND (12) 5550035	11/24/2015	JM	00740



DETAIL A  
SCALE 1 : 8



ITEM NO.	PART NUMBER	DESCRIPTION	QTY.	REV
1	5215096	PUSH BUTTON AIR ASSEMBLY	1	F
2	5535358	NUT M18 x 2.5 NL	4	-
3	5570795	1/4" POLY-FLO TUBING	17000*mm	-
4	5595015	HD-7P/7PR CABLE ASSEMBLY Ø10 x 6494mm ST	1	E
5	5595014	HD-7P/7PR CABLE ASSEMBLY Ø10 x 5086mm ST	1	E
6	5595013	HD-7P/7PR CABLE ASSEMBLY Ø10 x 10674mm ST	1	E
7	5595012	HD-7P/7PR/XP/XPR-10ACX CABLE ASSEMBLY Ø10 x 9290mm ST	1	E
8	5174092	HD-7/9 SERIES PARTS BAG	1	E
9	5715003	POWER UNIT VIBRATION DAMPENER	1	B
10	5745014	HD-7/7500/9 SERIES DRIVE UP RAMP PIN	4	B
11	5570050	FLEX TUBE ASSEMBLY 1320mm	1	B
12	5700029	HD-SERIES FLEX TUBE BRACKET PLATE	1	F
13	5700033	HD-SERIES FLEX TUBE ANGLE	1	E
14	5700072	WHEEL CHOCK	2	A
15	5545342	WASHER M18 FLAT	4	-
16	5570874	HD-7P HYD. HOSE ASSY Ø6.4 x 2492mm	1	D
17	5530456	AB 3/4" x 4 - 3/4"	16	-
18	5600405	HD-7P/7500/9 SERIES TOP PLATE WELDMENT	4	C
19	5900041	HD-7 SERIES INSTALLATION MANUAL	1	-
20	5900147	SAFETY MANUAL ALI / SM 93-1	1	-
21	5900152	ALIGN OIM OPERATION INSPECTION & MAINTENANCE	1	-
22	5905151	SAFETY TIPS CARD ALI-ST 90	1	-
23	5716630	HD-9 SERIES CROSSTUBE COVER, PLASTIC	4	A
24	5550025	FTG GRS M6x1	12	PRE

DO NOT SCALE DRAWING

NAME	DATE
DRAWN TM	05/09/2013
CHECKED -	-

DIMENSIONS ARE IN MM



THIRD ANGLE PROJECTION

PROPRIETARY AND CONFIDENTIAL  
THE INFORMATION CONTAINED IN THIS DRAWING IS THE SOLE PROPERTY OF BENDPAK INC. ANY REPRODUCTION IN PART OR AS A WHOLE WITHOUT THE WRITTEN PERMISSION OF BENDPAK INC. IS PROHIBITED.

**BendPak** 1645 LEMONWOOD DR.  
SANTA PAULA, CA 93060

TITLE: PARTS BOX HD-7P

SIZE DWG. NO. REV  
**A** 5250184 E

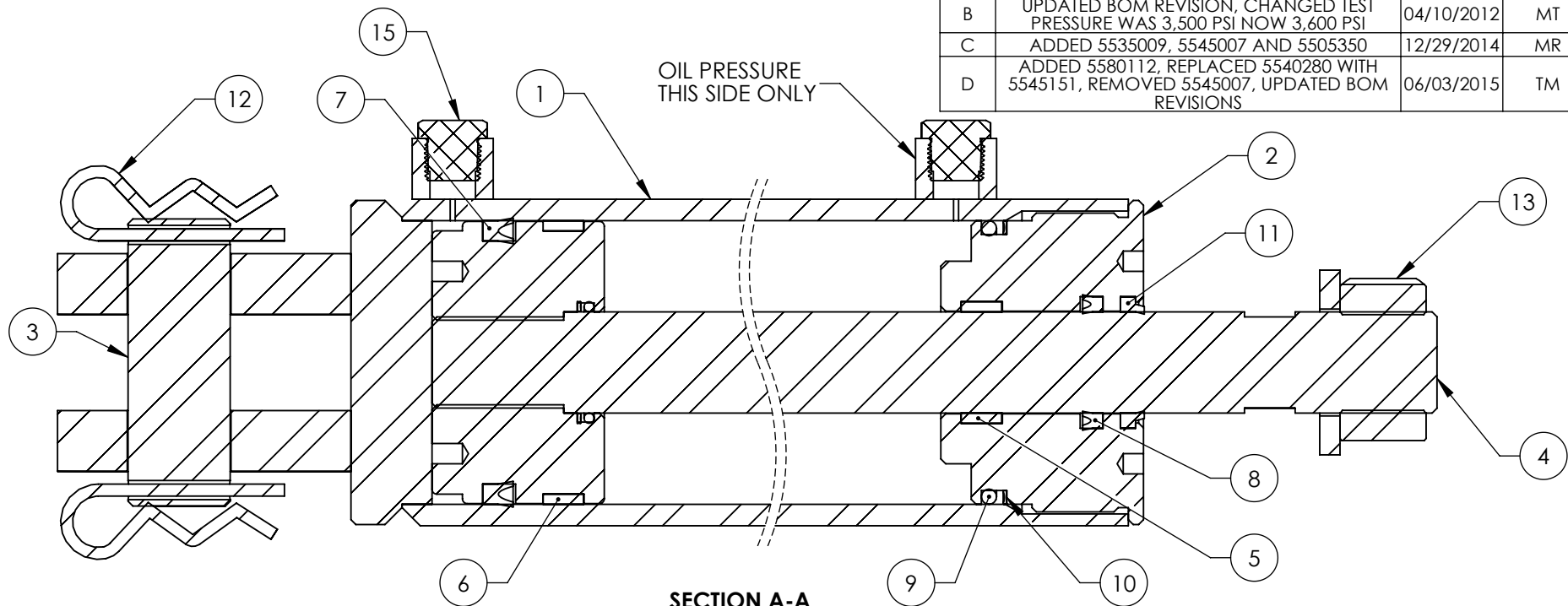
SCALE: 1:25 SHEET 1 OF 1

**NOTE: UNLESS OTHERWISE SPECIFIED.**

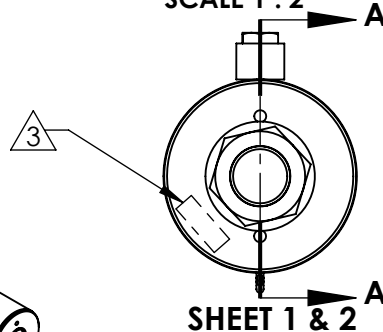
- SEE SHIPPING INSTRUCTIONS FOR FINAL PACKAGING
- INSERT PARTS BAG INTO PARTS BOX FOR SHIPMENT
- THREAD 5535358 WITH 5545342 ONTO CABLES FOR SHIPMENT
- HOSES AND CABLES IN REPRESENTATIONAL FORM
- (\*) LENGTH FOR REFERENCE ONLY

NEXT ASSEMBLY  
5260523

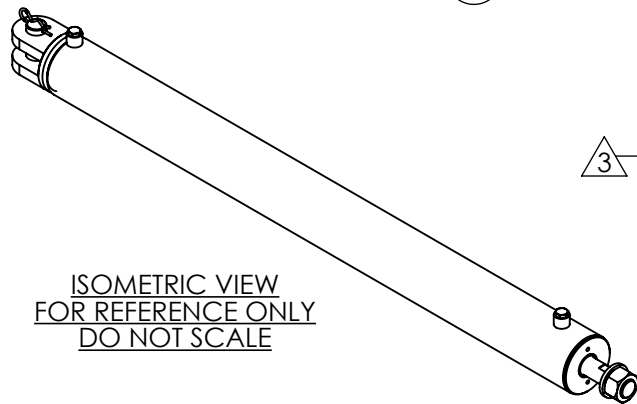
REVISION				
REV	DESCRIPTION	DATE	EDITED BY	ECO#
B	UPDATED BOM REVISION, CHANGED TEST PRESSURE WAS 3,500 PSI NOW 3,600 PSI	04/10/2012	MT	00510
C	ADDED 5535009, 5545007 AND 5505350	12/29/2014	MR	00675
D	ADDED 5580112, REPLACED 5540280 WITH 5545151, REMOVED 5545007, UPDATED BOM REVISIONS	06/03/2015	TM	00683



SECTION A-A  
SCALE 1 : 2





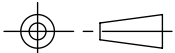
ISOMETRIC VIEW  
FOR REFERENCE ONLY  
DO NOT SCALE



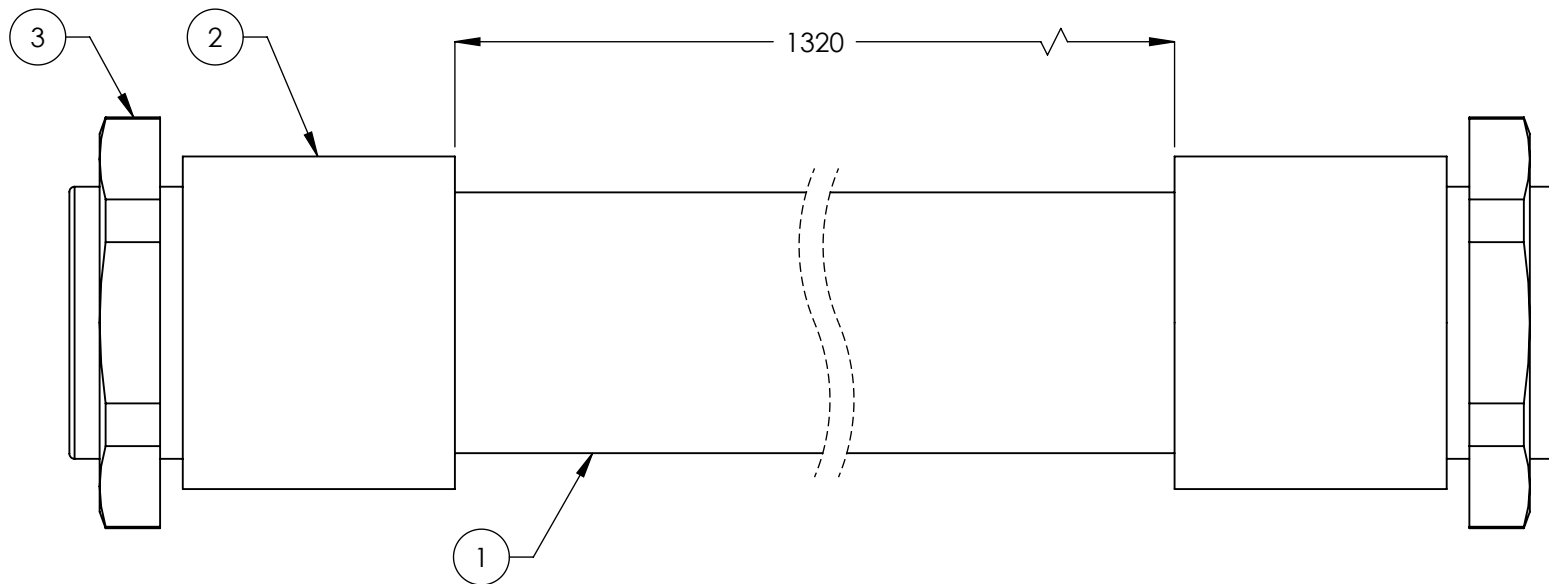
### NOTE: UNLESS OTHERWISE SPECIFIED.

1. GREASE SEALS PRIOR TO ASSEMBLY
2. PRESSURE TEST CYLINDER ASSEMBLY 100% TO 3,600 PSI.(NO LEAKS)
3. MARK IN APPROXIMATE LOCATION WITH THE FOLLOWING INFORMATION: MANUFACTURER  
MONTH/ YEAR  
PART NUMBER
4. DISOGRIN 001-096 OR HERCULES DRU25-1.12-25 MAY BE USED IN PLACE OF RECO UN-1250-1625-0250
5. PARKER 4615-SHD-01250, HERCULES ST-125 OR AFM D-1250 MAY BE USED IN PLACE OF RECO D-1250
6. PARKER 4615-UP-2500-3000-375 OR HERCULES DPU25-3.00-37 MAY BE USED IN PLACE OF RECO UN-3000-3500-0375
7. HERCULES 612-350-050 MAY BE USED IN PLACE OF WR-03500-0500-125
8. HERCULES 612-150-050 MAY BE USED IN PLACE OF WR-01500-0500-125
9. VERIFY HYDRAULIC PORTS ARE CAPPED WITH PLUGS


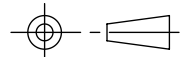
ITEM NO.	PART NUMBER	DESCRIPTION	QTY	REV
1	700171	CYLINDER TUBE WELDMENT Ø3.5	1	C
2	700148	HEAD CAP Ø3.5	1	D
3	700149	CLEVIS PIN Ø32 x 90	1	C
4	700167	PISTON WELDMENT Ø3.5x41	1	C
5	WR-01500-0500-125	WEAR RING	1	--
6	WR 03500-0500-125	WEAR RING	1	--
7	RECO UN-3000-3500-0375	PISTON SEAL d76.20 D88.90 h9.53	1	--
8	RECO UN-1250-1625-0250	PISTON SEAL d31.75 D41.28 h6.35	1	--
9	-338 BUANA 70	O-RING 3/16 X 3 1/8 X 3 1/2	1	--
10	-338 BUANA 90	BACKUP RING	1	--
11	RECO D-1250	WIPER	1	--
12	5505350	MODEL#211 HAIR PIN/ LARGE	2	--
13	5535009	NUT 1-1/4 -12 NL	1	--
14	5545151	WASHER Ø1 1/4 x 2.28 x .25" FLAT	1	--
15	5580112	3/8-18 NPT PLASTIC SCREW PLUG	2	--

DO NOT SCALE DRAWING		NAME	DATE	<div> <b>BendPak.</b> <small>MOVING AUTOMATIC SERVICE SOLUTIONS</small></div> <div>1645 LEMONWOOD DR. SANTA PAULA, CA 93060</div>		
		DRAWN	AC			05/11/2010
		CHECKED	CA			08/27/2015
DIMENSIONS ARE IN MM		THIRD ANGLE PROJECTION			TITLE: CYLINDER ASSEMBLY Ø3.5 x 41	
						
PROPRIETARY AND CONFIDENTIAL THE INFORMATION CONTAINED IN THIS DRAWING IS THE SOLE PROPERTY OF <b>BENDPAK INC.</b> ANY REPRODUCTION IN PART OR AS A WHOLE WITHOUT THE WRITTEN PERMISSION OF <b>BENDPAK INC.</b> IS PROHIBITED.						
		SIZE		DWG. NO.	REV	
		<b>A</b>		5502112	D	
SCALE: 1:4				SHEET 1 OF 2		

REVISION		DATE	EDITED BY	ECO#
REV.	DESCRIPTION			
A	PRODUCTION RELEASE	12/24/2007	AC	00104
A-001	CHANGED SURFACE FINISH FROM 3.2 $\mu\text{m}$ TO 1.6 $\text{Ra } \mu\text{m}$	09/05/2008	GJ	00237
A-002	UPDATED NEXT ASSEMBLY	10/02/2008	AC	00140
B	UPDATE TUBE TO NEW STYLE, UPDATED NEXT ASSEMBLY AND TITLE	12/11/2008	AC	00256
B-001	UPDATED NEXT ASSEMBLY	05/04/2009	AC	00277
B-013	UPDATED NEXT ASSEMBLIES	05/17/2013	TM	00593



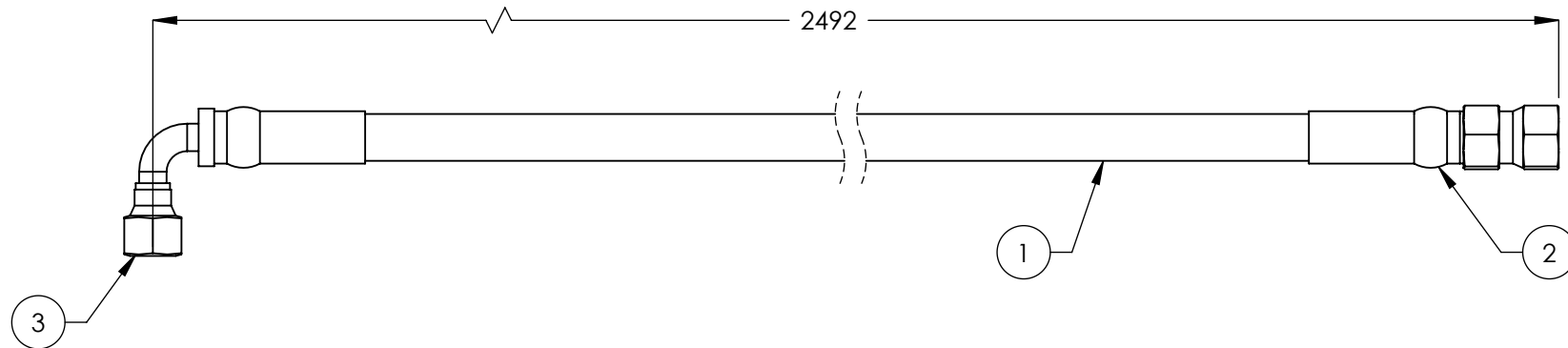
ITEM NO	PART NUMBER	DESCRIPTION	QTY.	REV
1	5570053	PE FLEX TUBE $\varnothing 34.5 \times \varnothing 29$	1386mm*	-
2	5555555	WQG1-M36/AD34.5 CONNECTOR	2	-
3	5535050	PLASTIC NUT M36 x 2	2	-


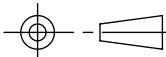
DO NOT SCALE DRAWING		NAME		DATE		 <b>BendPak.</b> 1645 LEMONWOOD DR. SANTA PAULA, CA 93060			
DIMENSIONS ARE IN MM TOLERANCES: 0. = ±1.5 0.0 = ±1.0 0.00 = ±0.25 0.000 = ±0.13  ANGULAR: MACH ±2°  SURFACE FINISH 1.6 ISO Ra μm FOR MACHINED SURFACES UNLESS OTHERWISE SPECIFIED  MATERIAL:		DRAWN		AC		12/24/2007			
		CHECKED							
Y SIZE:		THIRD ANGLE PROJECTION				TITLE:  FLEX TUBE ASSEMBLY 1320mm			
									
		PROPRIETARY AND CONFIDENTIAL THE INFORMATION CONTAINED IN THIS DRAWING IS THE SOLE PROPERTY OF <b>BENDPAK INC.</b> ANY REPRODUCTION IN PART OR AS A WHOLE WITHOUT THE WRITTEN PERMISSION OF <b>BENDPAK INC.</b> IS PROHIBITED.				SIZE DWG. NO.		REV	
						A 5570050		B	
						SCALE: 1:1		SHEET 1 OF 1	

**NOTE: UNLESS OTHERWISE SPECIFIED.**

- FOR ITEM 1 SPECIFICATIONS REFER TO PART SPECIFICATION FORM
- (\*)ITEM 1 QTY FOR REFERENCE ONLY

REVISION				
REV	DESCRIPTION	DATE	EDITED BY	ECO#
B	REPLACED ONE END WITH ELBOW	05/09/2008	AC	00178
C	WAS 2950 NOW 2492, UPDATED NEXT ASSEMBLY, ADDED HD-7P TO TITLE	12/08/2008	AC	00174
C-001	UPDATED NEXT ASSEMBLY	02/24/2012	TM	00501
C-002	UPDATED NEXT ASSEMBLIES	11/23/2012	TM	00562
C-003	UPDATED NEXT ASSEMBLIES	05/24/2013	TM	00593
D	REPLACED 5570110 WITH 5570129	12/30/2014	MR	00675

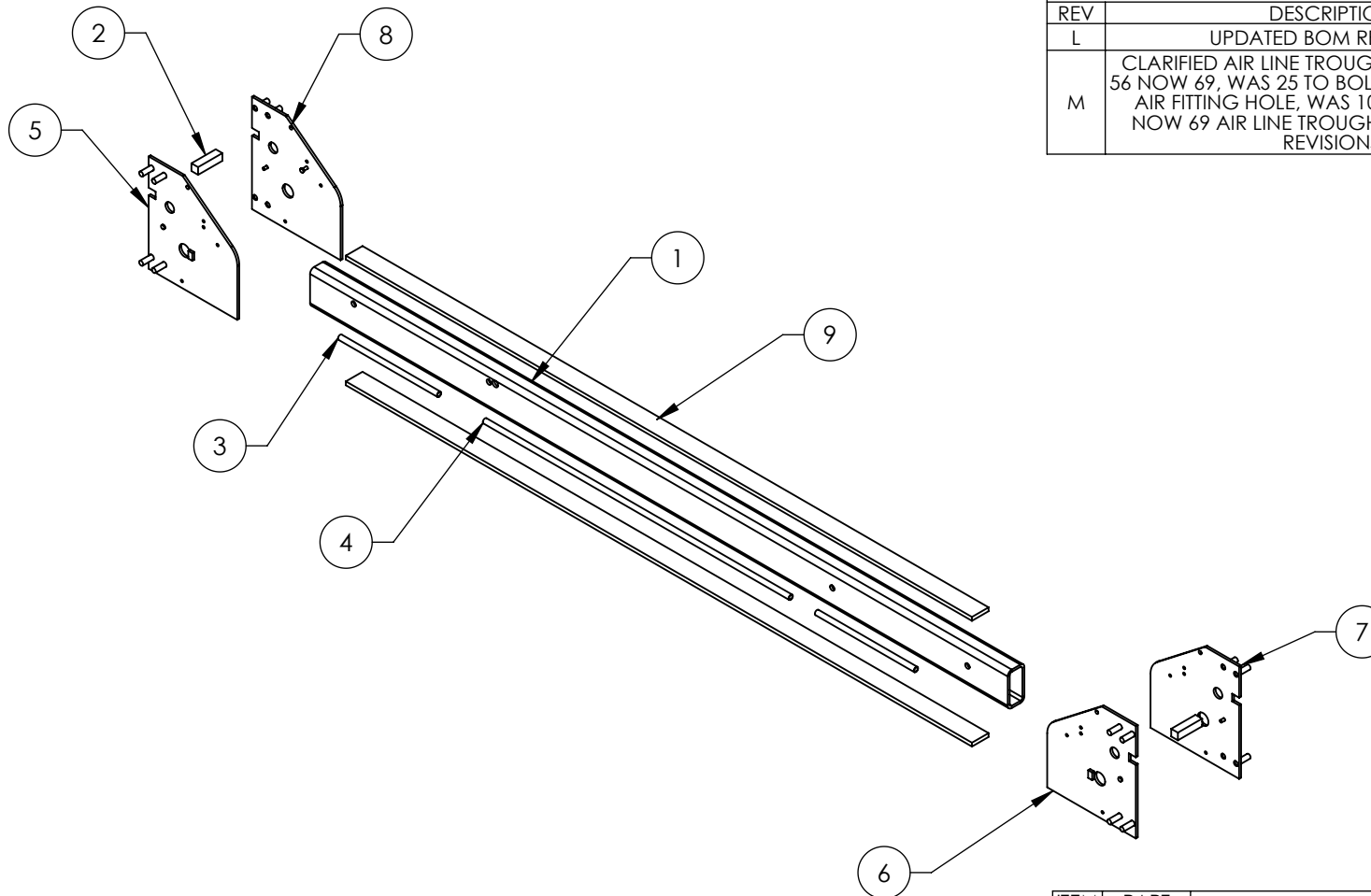


BOM Table					
ITEM NO.	PART NUMBER	DESCRIPTION		QTY.	REV
1	5570129	Ø6.4 ID HYDRAULIC HOSE		2860mm*	A
2	5550325	FTG NPL Ø1/4 CRIMP x -04 JIC		1	-
3	5550345	FTG ELB Ø1/4 CRIMP x -04 JIC		1	-
DO NOT SCALE DRAWING		NAME	DATE	<div> <b>BendPak.</b> HYDRAULIC AUTOMATIC BENDER SOLUTIONS</div> <div>1645 LEMONWOOD DR. SANTA PAULA, CA 93060</div>	
		DRAWN	GJZ 01/02/2008		
		CHECKED	VB 02/06/2015		
DIMENSIONS ARE IN MM TOLERANCES: 0. = ±1.5 0.0 = ±0.5  ANGULAR: 0. = ±2°  SURFACE FINISH 1.6 ISO Ra µm FOR MACHINED SURFACES UNLESS OTHERWISE SPECIFIED		THIRD ANGLE PROJECTION		TITLE: HD-7P HYD. HOSE ASSY Ø6.4 x 2492mm	
				SIZE DWG. NO. REV	
		<div>PROPRIETARY AND CONFIDENTIAL</div> <div>THE INFORMATION CONTAINED IN THIS DRAWING IS THE SOLE PROPERTY OF BENDPAK INC. ANY REPRODUCTION IN PART OR AS A WHOLE WITHOUT THE WRITTEN PERMISSION OF BENDPAK INC. IS PROHIBITED.</div>		A 5570874 D	
		SCALE: 1:2			SHEET 1 OF 1

**NOTE: UNLESS OTHERWISE SPECIFIED.**


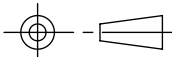
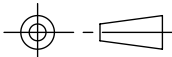
- FOR ITEM 1 SPECIFICATIONS REFER TO PART SPECIFICATION FORM
- (\*)ITEM 1 QTY FOR REFERENCE ONLY

NEXT ASSEMBLY
5250164
5250184



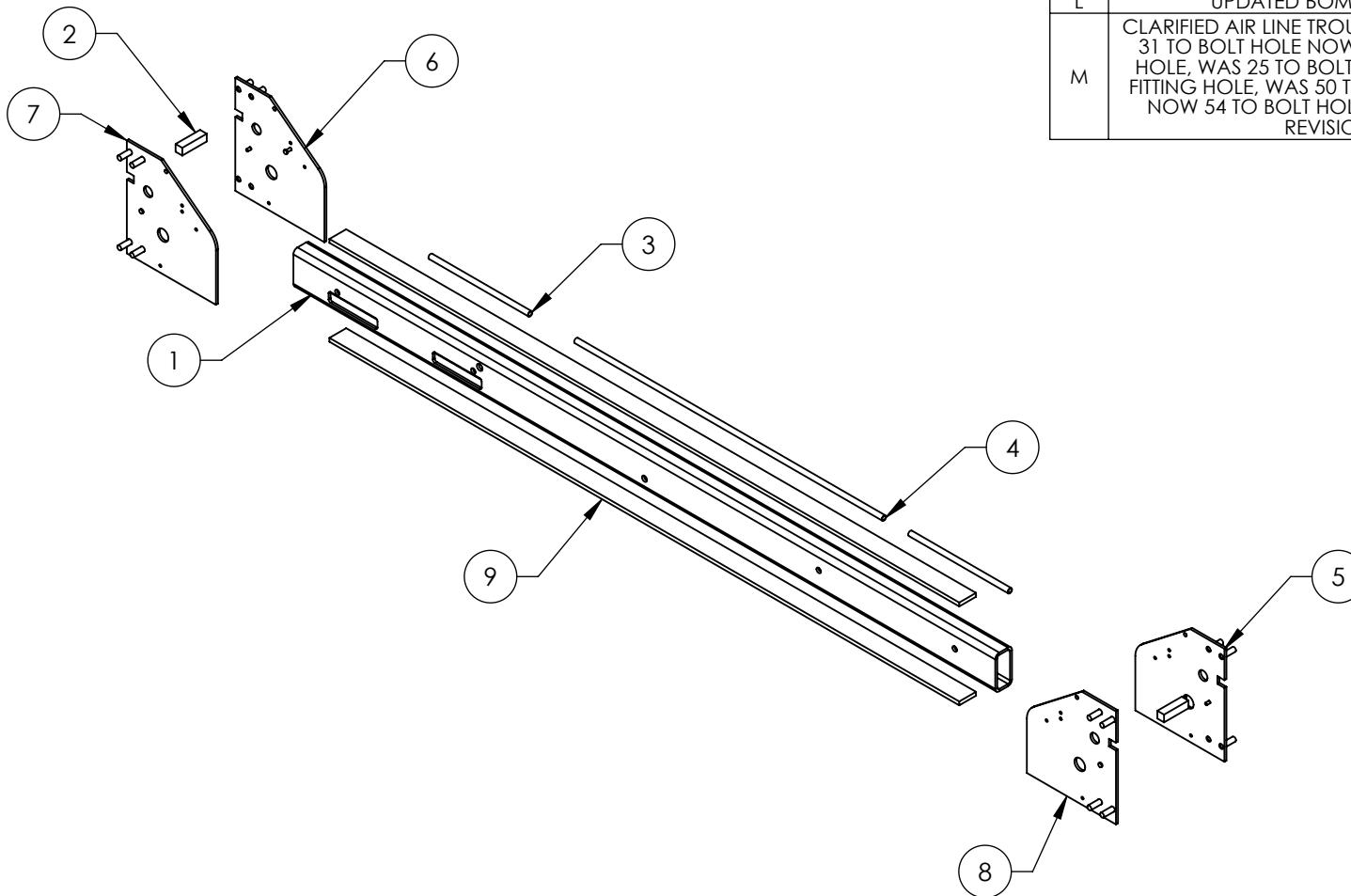
REVISION				
REV	DESCRIPTION	DATE	EDITED BY	ECO#
L	UPDATED BOM REVISIONS	09/30/2014	TM	00664
M	CLARIFIED AIR LINE TROUGH DISTANCE, WAS 56 NOW 69, WAS 25 TO BOLT HOLE NOW 54 TO AIR FITTING HOLE, WAS 106 TO BOLT HOLE NOW 69 AIR LINE TROUGH, UPDATED BOM REVISIONS	06/01/2015	TM	00683

ITEM NO.	PART NUMBER	DESCRIPTION	QTY	REV
1	5766042	HD-7P/7PXN LARGE WINDOW CROSSTUBE	1	E
2	5760010	HD-7/9 SERIES CROSSTUBE SAFETY BLOCK	2	B
3	5755018	AIR LINE TROUGH Ø13 x Ø9.8 x 297	2	C
4	5755020	AIR LINE TROUGH Ø13 x Ø9.8 x 918	1	C
5	5620130	HD-7/7500/9 SERIES CROSS TUBE END PLATE #1	1	J
6	5620131	HD-7/7500/9 SERIES CROSS TUBE END PLATE #2	1	J
7	5620132	HD-7/7500/9 SERIES CROSS TUBE END PLATE #3	1	J
8	5620133	HD-7/7500/9 SERIES CROSS TUBE END PLATE #4	1	J
9	5735052	HD-7P/7PXN/9ST/9STX CROSS TUBE STRAP	2	D

DO NOT SCALE DRAWING		NAME	DATE	 <b>BendPak</b> 1645 LEMONWOOD DR. SANTA PAULA, CA 93060	
DIMENSIONS ARE IN MM TOLERANCES: 0. = ±1.5 0.0 = ±0.5  ANGULAR: 0. = ±2°  SURFACE FINISH 1.6 ISO Ra µm FOR MACHINED SURFACES UNLESS OTHERWISE SPECIFIED		DRAWN	AC	11/11/2008	
		CHECKED	CA	08/27/2015	
		THIRD ANGLE PROJECTION			TITLE: HD-7P/7PXN LARGE WINDOW CROSSTUBE WELDMENT
					
Y		<b>PROPRIETARY AND CONFIDENTIAL</b> THE INFORMATION CONTAINED IN THIS DRAWING IS THE SOLE PROPERTY OF <b>BENDPAK INC.</b> ANY REPRODUCTION IN PART OR AS A WHOLE WITHOUT THE WRITTEN PERMISSION OF <b>BENDPAK INC.</b> IS PROHIBITED.			SIZE DWG. NO. REV
					A 5600170 M
		SCALE: 1:15			SHEET 1 OF 2


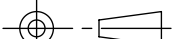
**NOTE: UNLESS OTHERWISE SPECIFIED.**

- BREAK AND DEBURR ALL SHARP EDGES 0.3mm
- REMOVE ALL WELD SPLATTER
- PAINT BENDPAK BLUE



REVISION				
REV	DESCRIPTION	DATE	EDITED BY	ECO#
L	UPDATED BOM REVISIONS	09/30/2014	TM	00664
M	CLARIFIED AIR LINE TROUGH DISTANCE, WAS 31 TO BOLT HOLE NOW 69 TO AIR FITTING HOLE, WAS 25 TO BOLT HOLE NOW 69 AIR FITTING HOLE, WAS 50 TO AIR LINE TROUGH NOW 54 TO BOLT HOLE, UPDATED BOM REVISIONS	06/01/2015	TM	00683

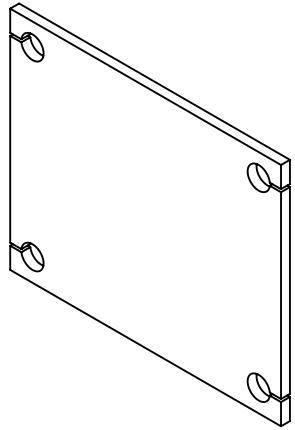
ITEM NO.	PART NUMBER	DESCRIPTION	QTY.	REV
1	5766052	HD-7P/7PXN/9PL/9ST/9STX SMALL WINDOW CROSSTUBE	1	E
2	5760010	HD-7/9 SERIES CROSSTUBE SAFETY BLOCK	2	B
3	5755018	AIR LINE TROUGH Ø13 x Ø9.8 x 297	2	C
4	5755020	AIR LINE TROUGH Ø13 x Ø9.8 x 918	1	C
5	5620130	HD-7/7500/9 SERIES CROSS TUBE END PLATE #1	1	J
6	5620131	HD-7/7500/9 SERIES CROSS TUBE END PLATE #2	1	J
7	5620132	HD-7/7500/9 SERIES CROSS TUBE END PLATE #3	1	J
8	5620133	HD-7/7500/9 SERIES CROSS TUBE END PLATE #4	1	J
9	5735052	HD-7P/7PXN/9ST/9STX CROSS TUBE STRAP	2	D

DO NOT SCALE DRAWING		NAME		DATE		<div> <b>BendPak.</b> <small>PROVIDING AUTOMOTIVE SERVICE EQUIPMENT</small></div> <div>1645 LEMONWOOD DR. SANTA PAULA, CA 93060</div>	
DIMENSIONS ARE IN MM TOLERANCES: 0. = ±1.5 0.0 = ±0.5  ANGULAR: 0. = ±2°  SURFACE FINISH 1.6 ISO Ra µm FOR MACHINED SURFACES UNLESS OTHERWISE SPECIFIED		DRAWN		AC			
		CHECKED		CA		08/27/2015	
		THIRD ANGLE PROJECTION					
Y							
		TITLE: HD-7P/7PXN SMALL WINDOW CROSSTUBE WELDMENT					
		SIZE DWG. NO.				REV	
		A 5600171				M	
		SCALE: 1:15				SHEET 1 OF 2	

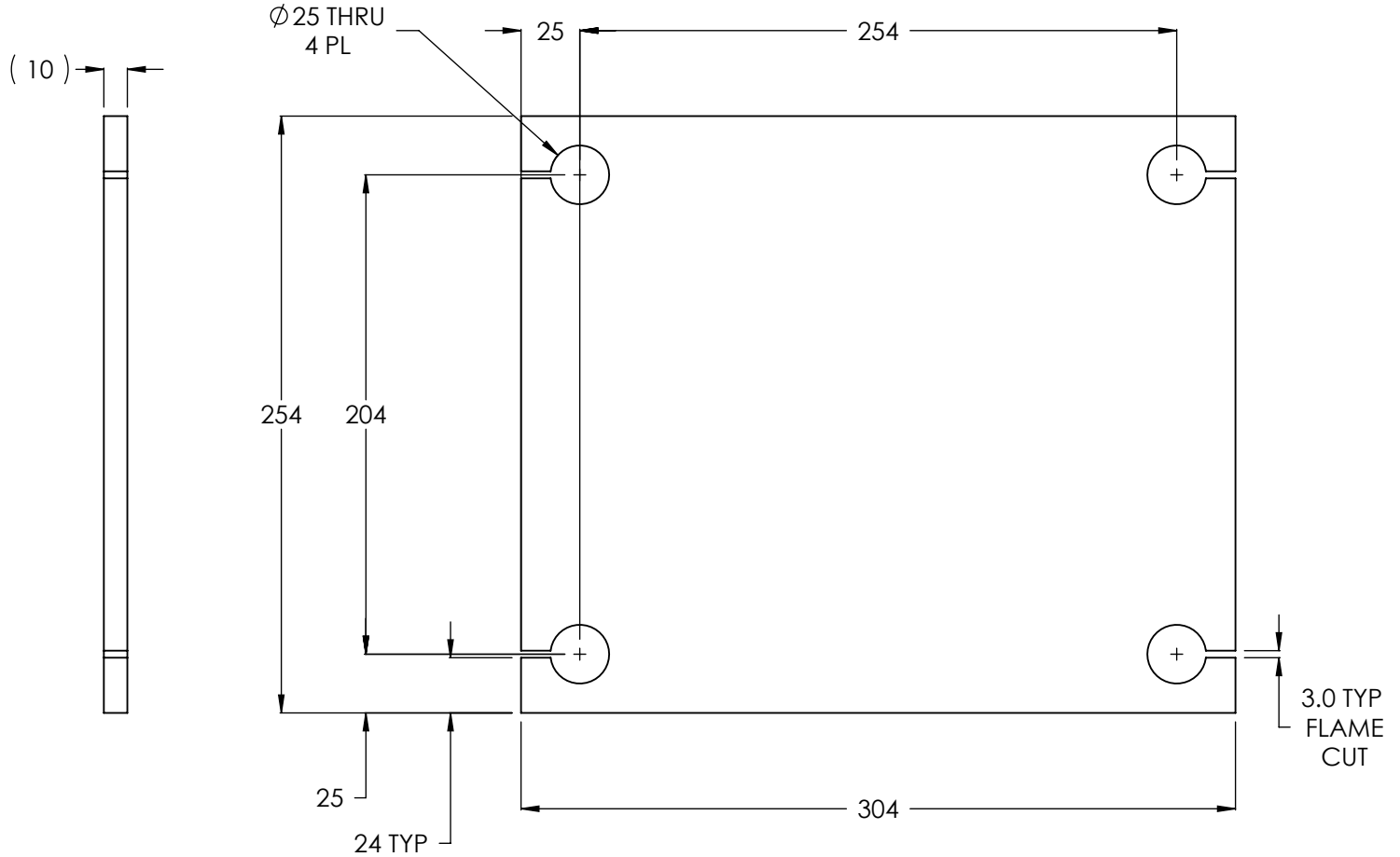
**NOTE: UNLESS OTHERWISE SPECIFIED.**

- BREAK AND DEBURR ALL SHARP EDGES 0.3mm
- REMOVE ALL WELD SPLATTER
- PAINT BENDPAK BLUE


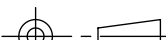
NEXT ASSEMBLY  
5215603



ISOMETRIC VIEW  
FOR REFERENCE ONLY  
DO NOT SCALE



REVISION				
REV.	DESCRIPTION	DATE	EDITED BY	ECO#
B	UPDATE SHEET TEMPLATE	03/31/2008	MT	00157
B-001	CHANGED SURFACE FINISH FROM 3.2 $\mu\text{m}$ TO 1.6 $\text{Ra}$ $\mu\text{m}$	09/10/2008	GJ	00237
B-002	UPDATED NEXT ASSEMBLY	10/30/2008	AC	00174
B-003	UPDATED NEXT ASSEMBLY	11/12/2008	TM	00249
C	UPDATED TITLE TO REFLECT WHERE USED	02/26/2010	AC	00333
D	UPDATED TITLE TO REFLECT WHERE USED	06/02/2010	AC	00366
D-001	UPDATED NEXT ASSEMBLIES	11/01/2011	TM	00487

NEXT ASSEMBLY 5600182 5600183 5600184 5600185 5600524 5600525 5600639 5600640 5600903 5600904 5620236 5620237	DO NOT SCALE DRAWING		NAME	DATE	 <b>BendPak.</b> <small>MOVING AUTOMOTIVE SERVICE SOLUTIONS</small> 1645 LEMONWOOD DR. SANTA PAULA, CA 93060	
	DIMENSIONS ARE IN MM TOLERANCES: 0. = ±1.5 0.0 = ±0.5	DRAWN	GJZ	02/29/2008		
	ANGULAR: 0. = ±2°	CHECKED			<b>TITLE:</b> HD-7P/7500/9/14 SERIES POST BASE PLATE	
	SURFACE FINISH 1.6 ISO Ra µm FOR MACHINED SURFACES UNLESS OTHERWISE SPECIFIED	<b>THIRD ANGLE PROJECTION</b> 				
	MATERIAL: HR ASTM A36 OR Q235 GB/T 700	<b>PROPRIETARY AND CONFIDENTIAL</b> THE INFORMATION CONTAINED IN THIS DRAWING IS THE SOLE PROPERTY OF <b>BENDPAK INC.</b> ANY REPRODUCTION IN PART OR AS A WHOLE WITHOUT THE WRITTEN PERMISSION OF <b>BENDPAK INC.</b> IS PROHIBITED.			SIZE	DWG. NO.
	SIZE: 10mm THK				<b>A</b>	5731632
					REV <b>D</b>	
<b>SCALE: 1:3</b>					SHEET 1 OF 1	

**NOTE: UNLESS OTHERWISE SPECIFIED.**

1. BREAK AND DEBURR ALL SHARP EDGES 0.3mm.

## PART SPECIFICATION FORM

BENDPAK Number:	5900041
MRP Description:	HD-7 SERIES INSTALLATION MANUAL
Date:	07/12/2013
ECO :	00724

### 1. Engineering Specification

#### Application:

INSTALLATION MANUAL

#### Detailed Description:

**WARNING**

**CAUTION**  
The safe operating temperature range for this product is 41°F to 104°F.

**IMPORTANT SAFETY INSTRUCTIONS**  
PLEASE READ THE ENTIRE CONTENTS OF THIS MANUAL PRIOR TO INSTALLATION AND OPERATION. BY PROCEEDING WITH LIFT INSTALLATION AND OPERATION YOU AGREE THAT YOU FULLY UNDERSTAND AND COMPREHEND THE FULL CONTENTS OF THIS DOCUMENT. FORWARD THIS MANUAL TO ALL OPERATORS. FAILURE TO OPERATE THIS EQUIPMENT AS DIRECTED MAY CAUSE INJURY OR DEATH.

**INSTALLATION AND OPERATION MANUAL**  
7,000 POUND CAPACITY  
FOUR-POST PARKING LIFTS

**MODELS:**  
HD-7P  
HD-7W

**READ FIRST**  
Do not operate this machine until you read and understand all the safety warnings and operate in this manual.

**BE SAFE**  
Your new lift was designed and built with safety in mind. However, your overall safety can be increased with proper training and thoughtful operation on the part of the operator. DO NOT operate or repair this equipment without reading this manual and the important safety instructions shown inside. Keep this operation manual near the lift at all times. Make sure that ALL USERS read and understand this manual.

**RECEIVING**  
The shipment should be thoroughly inspected as soon as it is received. The signed Bill of Lading is acknowledgement by the shipping carrier as receipt of this product as listed in your invoice as being in a good condition of shipment. If any of these goods listed on this Bill of Lading are missing or damaged, do not accept goods until the shipping carrier makes a notation on the freight bill of the missing or damaged goods. Do this for your own protection.

**BP BendPak®**  
PROVIDING AUTOMOTIVE SERVICE SOLUTIONS

1645 Lemonwood Dr.  
Santa Paula, CA. 93060, USA  
Toll Free 1-800-253-7363  
Tel: 1-805-933-9970  
Fax: 1-805-933-9160  
www.bendpak.com

### 2. Vendor Information

Approved Vendor	Vendor Part #	Contact #	Preferred Vendor
1)			



## PART SPECIFICATION FORM

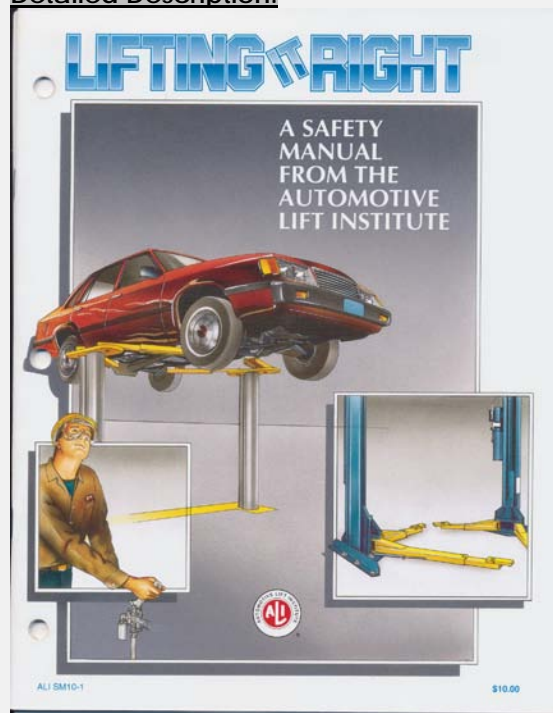
<b>BENDPAK Number:</b>	5900147
<b>MRP Description:</b>	SAFETY MANUAL ALI / SM 93-1
<b>Date:</b>	12/28/2010
<b>ECO :</b>	00431

### 1. Engineering Specification

**Application:**

ALI SAFETY MANUAL

**Detailed Description:**



### 2. Vendor Information

Approved Vendor	Vendor Part #	Contact #	Preferred Vendor
1)			

## PART SPECIFICATION FORM

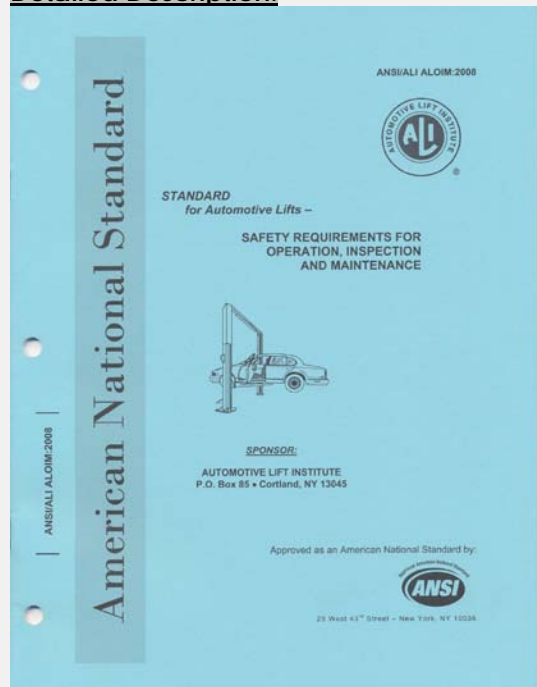
<b>BENDPAK Number:</b>	5900152
<b>MRP Description:</b>	ALIGN OIM OPERATION INSPECTION & MAINTENANCE
<b>Date:</b>	12/28/2010
<b>ECO :</b>	00431

### 1. Engineering Specification

**Application:**

ALI OPERATION INSPECTION & MAINTENANCE MANUAL

**Detailed Description:**



### 2. Vendor Information

Approved Vendor	Vendor Part #	Contact #	Preferred Vendor
1)			

## PART SPECIFICATION FORM

<b>BENDPAK Number:</b>	5905103
<b>MRP Description:</b>	WARNING ALI/WL 200
<b>Date:</b>	05/06/2013
<b>ECO :</b>	00593

### 1. Engineering Specification

#### Application:

ALI 4 POST SAFETY STICKER KIT

#### Detailed Description:



SIZE: 11" L x 8.5" W (279mm x 216mm)

### 2. Vendor Information

Approved Vendor	Vendor Part #	Contact #	Preferred Vendor
1)			

## PART SPECIFICATION FORM

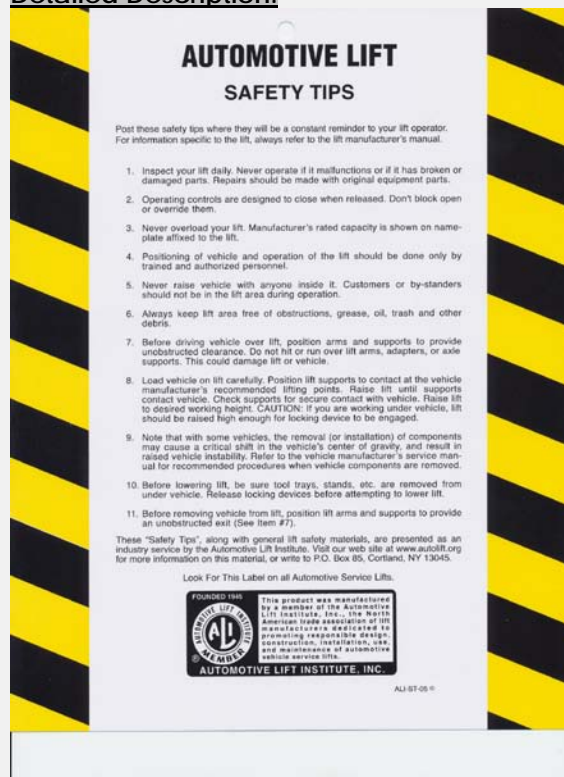
<b>BENDPAK Number:</b>	5905151
<b>MRP Description:</b>	SAFETY TIPS CARD ALI-ST 90
<b>Date:</b>	12/28/2010
<b>ECO :</b>	00431

### 1. Engineering Specification

#### Application:

ALI SAFETY TIPS

#### Detailed Description:



### 2. Vendor Information

Approved Vendor	Vendor Part #	Contact #	Preferred Vendor
1)			

## PART SPECIFICATION FORM

<b>BENDPAK Number:</b>	5905311
<b>MRP Description:</b>	BENDPAK LABEL; 4 x 38" WHITE INK
<b>Date:</b>	05/13/2015
<b>ECO :</b>	00689

### 1. Engineering Specification

**Application:**

BENDPAK LABEL

**Detailed Description:**



**SIZE:** 38" L x 4.25" W (965mm x 108mm)

- Material: Yellow Represents Clear Adhesive PET
- Size: 4.25"W x 38"H
- Thickness: 4 Mil
- Finish: Polished
- Ink: U.V. protected, Opaque White
- Print Process: Silk Screen, 85 line-screen (Opaque White ink, clear adhesive PET will fill in blank areas.)
- Lamination: Clear-gloss over-laminate for abrasion, chemical, and ultra violet protection

### 2. Vendor Information

Approved Vendor	Vendor Part #	Contact #	Preferred Vendor
1)			

# B

# E

# N

# D

# P

# A

# K

# BendPak

**ABOVE-GROUND LIFTS**



**BendPak®**  
PROVIDING AUTOMOTIVE SERVICE SOLUTIONS



1645 Lemonwood Drive  
Santa Paula, CA 93060  
U.S.A.  
(805) 933-9970  
[www.bendpak.com](http://www.bendpak.com)

P/N 5905311

## PART SPECIFICATION FORM

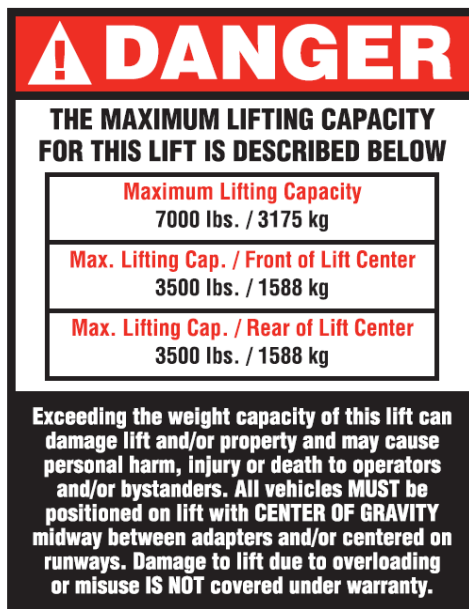
BENDPAK Number:	5905401
MRP Description:	MAX CAP DANGER 7K
Date:	05/06/2013
ECO :	00593

### 1. Engineering Specification

**Application:**

LIFT CAPACITY STICKER

**Detailed Description:**



SIZE: 5" L x 4" W (127mm x 100mm)

P/N 5905401

### 2. Vendor Information

Approved Vendor	Vendor Part #	Contact #	Preferred Vendor
1)			

# **DANGER**

## **THE MAXIMUM LIFTING CAPACITY FOR THIS LIFT IS DESCRIBED BELOW**

### **Maximum Lifting Capacity**

**7000 lbs. / 3175 kg**

### **Max. Lifting Cap. / Front of Lift Center**

**3500 lbs. / 1588 kg**

### **Max. Lifting Cap. / Rear of Lift Center**

**3500 lbs. / 1588 kg**

**Exceeding the weight capacity of this lift can damage lift and/or property and may cause personal harm, injury or death to operators and/or bystanders. All vehicles MUST be positioned on lift with CENTER OF GRAVITY midway between adapters and/or centered on runways. Damage to lift due to overloading or misuse IS NOT covered under warranty.**



## PART SPECIFICATION FORM

<b>BENDPAK Number:</b>	5905465
<b>MRP Description:</b>	MANUFACTURER LABEL
<b>Date:</b>	05/07/2013
<b>ECO :</b>	00593

### 1. Engineering Specification

#### Application:

MANUFACTURER LABEL

#### Detailed Description:

MFD. BY BENDPAK INC.

LIFT TYPE: SURFACE MOUNT      CAPACITY: MED/HVY DTY  
 POWER: ELECTRIC/HYDRAULIC      ANCHORS: AS EQUIPPED  
 INSTALLATION - SEE OWNERS GUIDE OR CONTACT FACTORY

#### SHIPPING DAMAGE CLAIMS

WHEN THIS EQUIPMENT IS SHIPPED, TITLE PASSES TO THE PURCHASER UPON RECEIPT FROM THE CARRIER. CONSEQUENTLY, CLAIMS FOR THE MATERIAL DAMAGED IN SHIPMENT MUST BE MADE BY THE PURCHASER AGAINST THE TRANSPORTATION COMPANY AT THE TIME SHIPMENT IS RECEIVED.

PLEASE READ ALL OPERATORS/USERS MANUAL(S) PRIOR TO INSTALLATION AND OPERATION. UNDERSTAND AND COMPREHEND THE FULL CONTENTS OF EACH MANUAL(S) PRIOR TO INSTALLATION AND OPERATION. DELIVER THE MANUAL(S) TO ALL OPERATORS. FAILURE TO OPERATE THIS EQUIPMENT AS DIRECTED MAY CAUSE INJURY OR DEATH.

#### IMPORTANT NOTE:

BENDPAK LIFTS ARE SUPPLIED WITH CONCRETE FASTENERS MEETING THE CRITERIA AS PRESCRIBED BY ASTM E488 - 96(2003). LIFT BUYERS ARE RESPONSIBLE FOR ANY SPECIAL REGIONAL STRUCTURAL AND/OR SEISMIC ANCHORING REQUIREMENTS SPECIFIED BY ANY OTHER AGENCIES AND/OR CODES SUCH AS THE UNIFORM BUILDING CODE (UBC) AND/OR INTERNATIONAL BUILDING CODE (IBC).



INTERNAL BAR CODE - FOR FACTORY AUDIT ONLY 34086

BPK	STYOT	P20KVR	X18576	HVY DTY/ GVR
				832

THE MANUFACTURE, USE, SALE OR IMPORT OF THIS PRODUCT MAY BE SUBJECT TO ONE OR MORE UNITED STATES PATENTS, OR PENDING APPLICATIONS, OWNED BY BENDPAK, INC.

ENGINEERED BY BENDPAK INC USA

MADE IN CHINA

SIZE: 5.125" L x 5.125" W (130mm x 130mm)

### 2. Vendor Information

Approved Vendor	Vendor Part #	Contact #	Preferred Vendor
1)			

MFD. BY BENDPAK INC.

LIFT TYPE: SURFACE MOUNT

CAPACITY: MED/HVY DTY

POWER: ELECTRIC/HYDRAULIC

ANCHORS: AS EQUIPPED

INSTALLATION - SEE OWNERS GUIDE OR CONTACT FACTORY

#### SHIPPING DAMAGE CLAIMS

WHEN THIS EQUIPMENT IS SHIPPED, TITLE PASSES TO THE PURCHASER UPON RECEIPT FROM THE CARRIER. CONSEQUENTLY, CLAIMS FOR THE MATERIAL DAMAGED IN SHIPMENT MUST BE MADE BY THE PURCHASER AGAINST THE TRANSPORTATION COMPANY AT THE TIME SHIPMENT IS RECEIVED.

PLEASE READ ALL OPERATORS/USERS MANUAL(S) PRIOR TO INSTALLATION AND OPERATION. UNDERSTAND AND COMPREHEND THE FULL CONTENTS OF EACH MANUAL(S) PRIOR TO INSTALLATION AND OPERATION. DELIVER THE MANUAL(S) TO ALL OPERATORS. FAILURE TO OPERATE THIS EQUIPMENT AS DIRECTED MAY CAUSE INJURY OR DEATH.

#### IMPORTANT NOTE:

BENDPAK LIFTS ARE SUPPLIED WITH CONCRETE FASTENERS MEETING THE CRITERIA AS PRESCRIBED BY ASTM E488 - 96(2003). LIFT BUYERS ARE RESPONSIBLE FOR ANY SPECIAL REGIONAL STRUCTURAL AND/OR SEISMIC ANCHORING REQUIREMENTS SPECIFIED BY ANY OTHER AGENCIES AND/OR CODES SUCH AS THE UNIFORM BUILDING CODE (UBC) AND/OR INTERNATIONAL BUILDING CODE (IBC).



INTERNAL BAR CODE - FOR FACTORY AUDIT ONLY 34086

BPK

STYOT

P20KVR

X18576

HVY DTY/ GVR  
832

THE MANUFACTURE, USE, SALE OR IMPORT OF THIS PRODUCT MAY BE SUBJECT TO ONE OR MORE UNITED STATES PATENTS, OR PENDING APPLICATIONS, OWNED BY BENDPAK, INC.

ENGINEERED BY BENDPAK INC USA

MADE IN CHINA

## PART SPECIFICATION FORM

BENDPAK Number:	5905556
MRP Description:	4-POST SAFETY DECAL
Date:	05/06/2013
ECO :	00593

### 1. Engineering Specification

#### Application:

4-POST SAFETY DECAL

#### Detailed Description:



SIZE: 23" L x 4" W (584mm x 100mm)

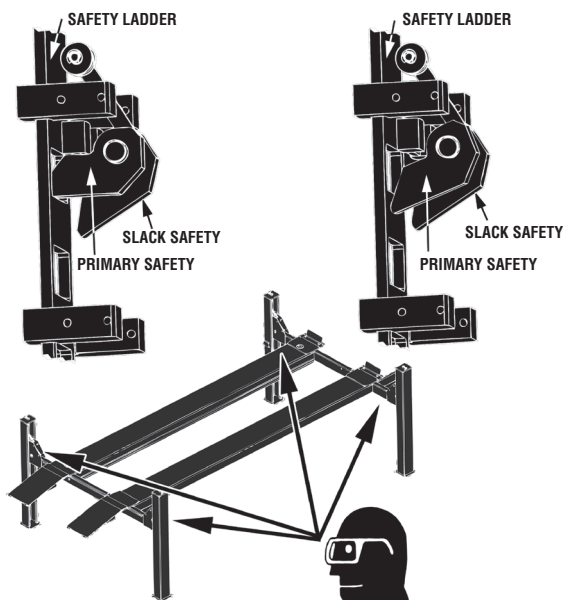
### 2. Vendor Information

Approved Vendor	Vendor Part #	Contact #	Preferred Vendor
1)			

# DANGER

**SAFETY LOCKS ENGAGED  
– OK TO PROCEED –**

**SAFETY LOCK NOT ENGAGED  
– REMAIN CLEAR –**



## **VISUALLY CONFIRM THAT ALL PRIMARY SAFETY LOCKS ARE ENGAGED BEFORE ENTERING WORK AREA.**

Suspension components used on this lift are intended to raise and lower lift only and are NOT meant to be load-holding devices. Remain clear of elevated lift unless visual confirmation is made that all primary safety locks are fully engaged and the lift is LOWERED onto the safety locks. Refer to installation/operation manual for proper safety lock procedures and/or further instruction.

# WARNING

## **WIRE ROPE INSPECTION AND MAINTENANCE**

- Lifting cables should be replaced every (3) three years or when visible signs of damage are apparent. DO NOT USE LIFT WITH DEFECTIVE OR WORN CABLES.
- Wire rope should be maintained in a well-lubricated condition at all times. Wire rope is only fully protected when each wire strand is lubricated both internal and external. Excessive wear will shorten the life of the wire rope. The factory suggests wire rope lubricant that penetrates to the core of the rope and provides long-term lubrication between each individual strand. In order to make sure that the inner layers of the rope remain well lubricated, lubrication should be carried out at intervals not exceeding three (3) months during operation.
- All sheaves and guide rollers in contact with the moving wire rope should be given regular visual checks for surface wear and lubricated to make sure that they run freely. This operation should be carried out at appropriate intervals generally not exceeding three (3) months during operation. For all sheave axles, the factory recommends standard wheel bearing grease. For all sheaves and/or guide rollers, the factory recommends 90-WT gear oil or similar heavy lubricant applied by any method including pump/spray dispensing, brush, hand and/or swabbing.

**Failure to read, understand and follow these instructions may cause death or serious injury. Read and understand these instructions before using lift.**

## **IMPORTANT OPERATION / MAINTENANCE INSTRUCTIONS - PLEASE READ**

### **TO RAISE LIFT**

- ✓ Position vehicle tires at the center of each runway.
- ✓ Set parking brake or use wheel chock to hold vehicle in position.
- ✓ Before raising vehicle, be sure all personnel are clear of lift and surrounding area. Pay careful attention to overhead clearances.
- ✓ Raise lift to desired height by pressing push button on power unit.
- ✓ Maintain visual contact with vehicle and surrounding area at all times while lowering lift.
- ✓ **STOP IMMEDIATELY** if load shifts or becomes unlevel.
- ✓ After vehicle is raised to desired height, lower lift onto the nearest safety lock. Do not allow cables to become excessively slack.
- ✓ **ALWAYS INSURE ALL PRIMARY SAFETY LOCKS ARE ENGAGED** before entering work area.

### **TO LOWER LIFT**

- ✓ Before lowering vehicle, be sure all personnel, tools and equipment are clear of lift and surrounding area.
- ✓ Raise lift by pressing **RAISE BUTTON** on power unit. Elevate lift at least two inches to allow adequate clearance for locks to clear.
- ✓ Press push button **AIR SAFETY VALVE** and **HOLD**.
- ✓ Lower vehicle by pressing power unit lowering handle until lift has descended completely.
- ✓ When lowering lift **PAY CAREFUL ATTENTION** that all personnel and objects are kept clear.
- ✓ **ALWAYS** keep a visual line of site on lift **AT ALL TIMES**.
- ✓ **ALWAYS** make sure that **ALL LOCKS** are disengaged. If one of the locks inadvertently engages on descent, lift and/or vehicle may disrupt causing personal injury or death.

### **REQUIRED MONTHLY MAINTENANCE**

- ✓ **ALWAYS** consult operation manual for factory recommended maintenance.
- ✓ Adjust lift cables to ensure lift raises level and safety locks engage simultaneously.
- ✓ Check all chain/cable connections, bolts and pins to insure proper mounting.
- ✓ Visually inspect safety locks for proper operation.
- ✓ Visually inspect concrete floor. **DO NOT USE LIFT** if concrete foundation shows signs of deterioration.
- ✓ Inspect all anchor bolts and retighten if necessary.
- ✓ Check columns for squareness and plumb.
- ✓ Inspect all bolts and/or fasteners making sure they are properly secured.
- ✓ Make a visual inspection of **ALL MOVING PARTS** and check for excessive signs of wear.
- ✓ Replace **ALL FAULTY PARTS** before lift is put back into operation.

### **WARNING**

1. **WARNING:** If cement anchor bolts are loose, or any component of the lift is found to be defective, **DO NOT USE LIFT!**
2. Never operate the lift with any person or equipment below.
3. Never exceed rated capacity.
4. Always insure safety locks are engaged before any attempt is made to work on or near vehicle.
5. Never leave lift in an elevated position unless the safety locks are engaged.
6. Do not permit electric motor to get wet! Motor damage caused by dampness is not covered under warranty.

## PART SPECIFICATION FORM


<b>BENDPAK Number:</b>	5905940
<b>MRP Description:</b>	PRODUCT DATA LABEL
<b>Date:</b>	05/06/2013
<b>ECO :</b>	00593

### 1. Engineering Specification

**Application:**

PRODUCT DATA LABEL

**Detailed Description:**



SANTA PAULA, CA USA  
 WWW.BENDPAK.COM

---

LIFT TYPE: SURFACE MOUNT CAP: MED/HVY DTY MFG. BPK SEE DATA PLATE FOR PRODUCT DETAILS  
 POWER: ELECTRIC/HYDRAULIC INSTALLATION - SEE OWNERS GUIDE OR CONTACT FACTORY

---

SAFETY INSTRUCTIONS: IF ATTACHMENTS, ACCESSORIES OR CONFIGURATION MODIFYING COMPONENTS THAT ARE LOCATED IN THE LOAD PATH, AFFECT OPERATION OF THE LIFT, AFFECT THE LIFT ELECTRICAL LISTING OR AFFECT INTENDED VEHICLE ACCOMMODATION ARE USED ON THIS LIFT AND, IF THEY ARE NOT CERTIFIED FOR USE ON THIS LIFT, THEN THE CERTIFICATION OF THIS LIFT SHALL BECOME NULL AND VOID. CONTACT THE PARTICIPANT FOR INFORMATION PERTAINING TO CERTIFIED ATTACHMENTS, ACCESSORIES OR CONFIGURATION MODIFYING COMPONENTS.

BENDPAK LIFTS ARE SUPPLIED WITH CONCRETE FASTENERS MEETING THE CRITERIA AS PRESCRIBED BY ASTM E488 - 96(2003). LIFT BUYERS ARE RESPONSIBLE FOR ANY SPECIAL REGIONAL STRUCTURAL AND/OR SEISMIC ANCHORING REQUIREMENTS SPECIFIED BY ANY OTHER AGENCIES AND/OR CODES SUCH AS THE UNIFORM BUILDING CODE (UBC) AND/OR INTERNATIONAL BUILDING CODE (IBC).

THE MANUFACTURE, USE, SALE OR IMPORT OF THIS PRODUCT MAY BE SUBJECT TO ONE OR MORE UNITED STATES PATENTS, OR PENDING APPLICATIONS, OWNED BY BENDPAK, INC.  
 DO NOT REMOVE      ENGINEERED BY BENDPAK INC. USA      MADE IN CHINA

SIZE: 2.3" L x 4.5" W (58mm x 114mm)

### 2. Vendor Information

Approved Vendor	Vendor Part #	Contact #	Preferred Vendor
1)			



SANTA PAULA, CA USA

WWW.BENDPAK.COM

PN 5905940

**LIFT TYPE: SURFACE MOUNT   CAP: MED/HVY DTY   MFG. BPK   SEE DATA PLATE FOR PRODUCT DETAILS**

**POWER: ELECTRIC/HYDRAULIC                      INSTALLATION - SEE OWNERS GUIDE OR CONTACT FACTORY**

SAFETY INSTRUCTIONS: IF ATTACHMENTS, ACCESSORIES OR CONFIGURATION MODIFYING COMPONENTS THAT ARE LOCATED IN THE LOAD PATH, AFFECT OPERATION OF THE LIFT, AFFECT THE LIFT ELECTRICAL LISTING OR AFFECT INTENDED VEHICLE ACCOMMODATION ARE USED ON THIS LIFT AND, IF THEY ARE NOT CERTIFIED FOR USE ON THIS LIFT, THEN THE CERTIFICATION OF THIS LIFT SHALL BECOME NULL AND VOID. CONTACT THE PARTICIPANT FOR INFORMATION PERTAINING TO CERTIFIED ATTACHMENTS, ACCESSORIES OR CONFIGURATION MODIFYING COMPONENTS.

BENDPAK LIFTS ARE SUPPLIED WITH CONCRETE FASTENERS MEETING THE CRITERIA AS PRESCRIBED BY ASTM E488 - 96(2003). LIFT BUYERS ARE RESPONSIBLE FOR ANY SPECIAL REGIONAL STRUCTURAL AND/OR SEISMIC ANCHORING REQUIREMENTS SPECIFIED BY ANY OTHER AGENCIES AND/OR CODES SUCH AS THE UNIFORM BUILDING CODE (UBC) AND/OR INTERNATIONAL BUILDING CODE (IBC).

THE MANUFACTURE, USE, SALE OR IMPORT OF THIS PRODUCT MAY BE SUBJECT TO ONE OR MORE UNITED STATES PATENTS, OR PENDING APPLICATIONS, OWNED BY BENDPAK, INC.

DO NOT REMOVE

ENGINEERED BY BENDPAK INC. USA

MADE IN CHINA

## PART SPECIFICATION FORM

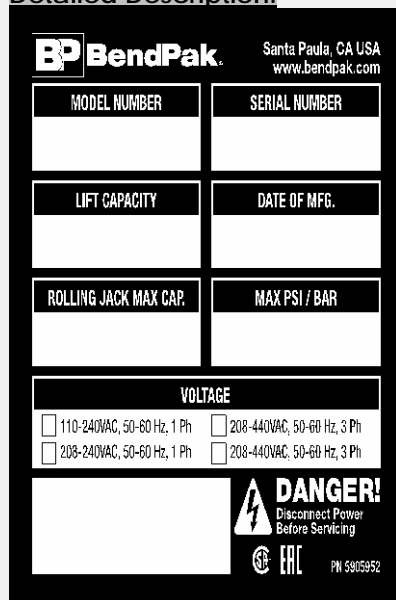
<b>BENDPAK Number:</b>	5905952
<b>MRP Description:</b>	LABEL C (4-POST LIFTS NO CE)
<b>Date:</b>	11/23/2015
<b>ECO :</b>	00740

### 1. Engineering Specification

#### Application:

DATA SERIAL TAG, 4-POST LIFTS, NO CE

#### Detailed Description:




**BendPak** Santa Paula, CA USA  
www.bendpak.com

MODEL NUMBER	SERIAL NUMBER
LIFT CAPACITY	DATE OF MFG.
ROLLING JACK MAX CAP.	MAX PSI / BAR

**VOLTAGE**

☐ 110-240VAC, 50-60 Hz, 1 Ph   
 ☐ 208-440VAC, 50-60 Hz, 3 Ph  
☐ 208-240VAC, 50-60 Hz, 1 Ph   
 ☐ 208-440VAC, 50-60 Hz, 3 Ph

**DANGER!**  
Disconnect Power  
Before Servicing

 ETC PN 5905952

SIZE: 3.38" L x 3.38" W  
(85.7mm x 85.7mm)

### 2. Vendor Information (Or for Reference)

Approved Vendor	Vendor Part #	Contact #	Preferred Vendor
1)			
2)			
OR BENDPAK ENGINEERING APPROVED EQUIVALENT			



Santa Paula, CA USA  
www.bendpak.com

**MODEL NUMBER**

**SERIAL NUMBER**

**LIFT CAPACITY**

**DESCRIPTION**

**ROLLING JACK MAX CAP.**

**MAX PSI / BAR**

**VOLTAGE**

☐ 110-240VAC, 50-60 Hz, 1 Ph

☐ 380-415VAC, 50-60 Hz, 3 Ph

☐ 208-240VAC, 50-60 Hz, 1 Ph

☐ 208-440VAC, 50-60 Hz, 3 Ph

**DATE OF MFG.**



**DANGER!**

Disconnect Power  
Before Servicing

WARRANTY VOID IF DATA PLATE IS REMOVED



PN 5905952





***2016***  
***NON-CE 4 Post Lifts***  
***Colors & Graphics***

***MODELS:***

<b><i>HD-9SW</i></b>	<b><i>HDS-40</i></b>
<b><i>HD-9SWX</i></b>	<b><i>HDS-40X</i></b>
<b><i>HD-14T</i></b>	<b><i>HD-9AE</i></b>

***4/7/16***

**CONFIDENTIAL INFORMATION.**

You may not disclose, print, copy or disseminate this information.  
Unauthorized use is a violation of federal criminal law.

# 4 Post Lifts Product Decal Positioning



Total of 4

PN 5905311

## BPK Post Branding Decal-Large\_5905311.pdf:

Material: Clear Adhesive PET

Size: 4.25"W x 38"H

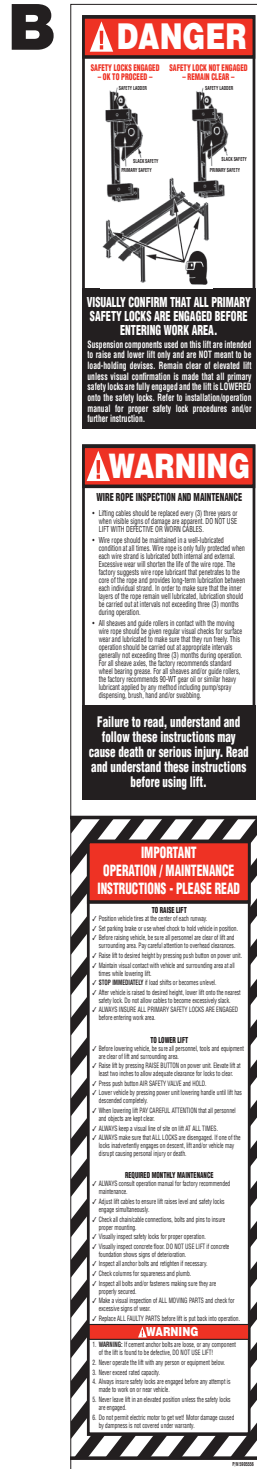
Thickness: 4 Mil

Finish: Polished

Ink: U.V. protected, Opaque White

Print Process: Silk Screen, 85 line-screen (Yellow color in file represents what should be clear PET material and SHOULD NOT print as Yellow ink. White area in file represents Opaque White ink.)

Lamination: Clear-gloss over-laminate for abrasion, chemical, and ultra violet protection



PN 5905556

## 4\_Post\_Safety\_Decal.pdf:

Size: 4"W x 23"H

Material: White Vinyl Pressure Sensitive Adhesive

Thickness: 4 Mil

Ink: U.V. protected CMYK 2/C Process

Finish: Polished

Print Process: Offset Lithography - 200 line-screen or 300 p.p.i. for digital

Lamination: Clear-gloss over-laminate for abrasion, chemical, and ultra violet protection

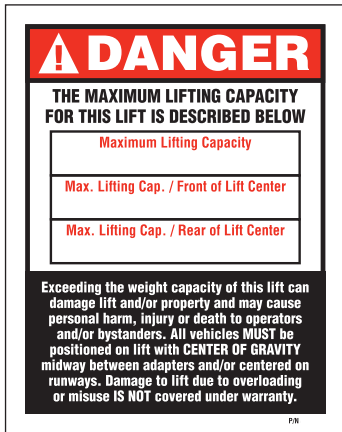


Ali\_4\_Post\_labels.pdf:

(Order Labels from ALI)

# 4 Post Lifts Product Decal Positioning

**\*D**



P/N 5905401 - Max Cap. Danger 7k  
P/N 5905695 - Max. Cap. Danger 7500  
P/N 5905402 - Max Cap. Danger 9k  
P/N 5905557 - Max. Cap. Danger 14K  
P/N 5905406 - Max Cap. Danger 18k  
P/N 5905407 - Max. Cap. Danger 27K  
P/N 5905408 - Max. Cap. Danger 35K  
P/N 5905409 - Max. Cap. Danger 40K

**\*Max. Cap. Danger.pdf:**

Size: 4"W x 5"H  
Material: White Vinyl Pressure Sensitive Adhesive  
Thickness: 4 Mil  
Ink: U.V. protected CMYK 2/C Process  
Finish: Polished  
Print Process: Offset Lithography - 200 line-screen or 300 p.p.i. for digital  
Lamination: Clear-gloss over-laminate for abrasion, chemical, and ultra violet protection

**\*E**



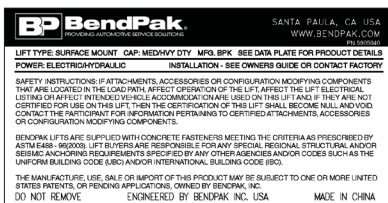
P/N 5905645 - NRTL\_Lifting\_Cap\_Label\_7K  
P/N 5905700 - NRTL\_Lifting\_Cap\_Label\_7500  
P/N 5905650 - NRTL\_Lifting\_Cap\_Label\_9k  
P/N 5905665 - NRTL\_Lifting\_Cap\_Label\_14k  
P/N 5905675 - NRTL\_Lifting\_Cap\_Label\_18k  
P/N 5905680 - NRTL\_Lifting\_Cap\_Label\_27k  
P/N 5905685 - NRTL\_Lifting\_Cap\_Label\_35K  
P/N 5905690 - NRTL\_Lifting\_Cap\_Label\_40K

**\*NRTL\_Lifting\_Cap\_Label\_.pdf:**

Size: 4.5"W x 3.25"H  
Material: White Vinyl Pressure Sensitive Adhesive  
Thickness: 4 Mil  
Ink: U.V. protected CMYK 2/C Process  
Finish: Polished  
Print Process: Offset Lithography - 200 line-screen or 300 p.p.i. for digital  
Lamination: Clear-gloss over-laminate for abrasion, chemical, and ultra violet protection

**\*DEPENDS ON LIFT MODEL AND CAPACITY**

**F**

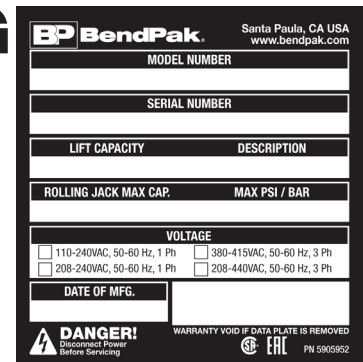


PN 5905940

**Product\_Data\_Label\_5905940-New.pdf:**

Size: 4.5"W x 2.3"H  
Material: White Vinyl Pressure Sensitive Adhesive  
Thickness: 4 Mil  
Ink: U.V. protected CMYK 2/C Process  
Finish: Polished  
Print Process: Offset Lithography - 200 line-screen or 300 p.p.i. for digital  
Lamination: Clear-gloss over-laminate for abrasion, chemical, and ultra violet protection

**G**



PN 5905952

**2015\_Serial\_Tag-C-5905952.jpg:**

Size: 3"W x 3"H  
Material: Material: 2 Mil. Matte Silver Polyester (Flex-PSE)  
Print using thermal transfer printer with resin ribbon  
Ink: 1 Color-Black

**H**



PN 5905326

**ALI-Gold-Label-5905326.jpg**

**\*\*FOR ALI APPROVED LIFTS ONLY**

# 4 Post Lifts Product Decal Positioning

---

**\*\*FOR ALL APPROVED  
LIFTS ONLY**

**D, H, G, F**

**Front of Post**  
(Top to Bottom)

**E, C**

**Back of Post**  
(Top to Bottom)

**B**

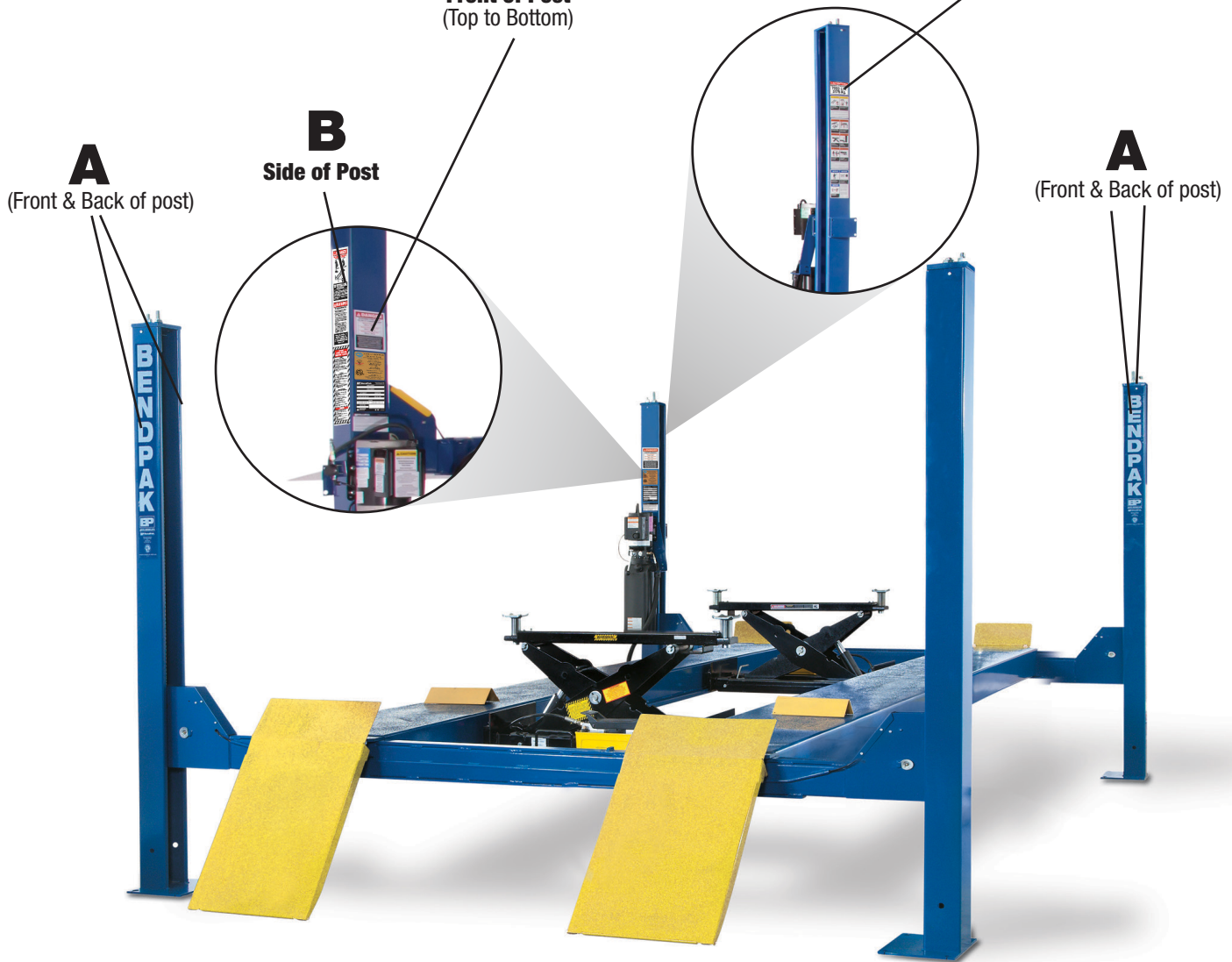
**Side of Post**

**A**

(Front & Back of post)

**A**

(Front & Back of post)





# 4 Post Lifts Packaging

<b>BP BendPak.</b> Santa Paula, CA USA www.bendpak.com	
<b>MODEL NUMBER</b>	<b>SERIAL NUMBER</b>
PN 5905285	

<b>PEEL OFF INVENTORY LABEL</b>	
<b>MODEL NUMBER</b>	<b>SERIAL NUMBER</b>

PN 5905285

**Do not remove back sheet of this portion to prevent from sticking completely as shown in image.**



MFD. BY BENDPAK INC.

LIFT TYPE: SURFACE MOUNT CAPACITY: MED/HVY DTY  
POWER: ELECTRIC/HYDRAULIC ANCHORS: AS EQUIPPED  
INSTALLATION - SEE OWNERS GUIDE OR CONTACT FACTORY

**SHIPPING DAMAGE CLAIMS**  
WHEN THIS EQUIPMENT IS SHIPPED, TITLE PASSES TO THE PURCHASER UPON RECEIPT FROM THE CARRIER. CONSEQUENTLY, CLAIMS FOR THE MATERIAL DAMAGED IN SHIPMENT MUST BE MADE BY THE PURCHASER AGAINST THE TRANSPORTATION COMPANY AT THE TIME SHIPMENT IS RECEIVED.

PLEASE READ ALL OPERATORS/USERS MANUAL(S) PRIOR TO INSTALLATION AND OPERATION. UNDERSTAND AND COMPREHEND THE FULL CONTENTS OF EACH MANUAL(S) PRIOR TO INSTALLATION AND OPERATION. DELIVER THE MANUAL(S) TO ALL OPERATORS. FAILURE TO OPERATE THIS EQUIPMENT AS DIRECTED MAY CAUSE INJURY OR DEATH.

**IMPORTANT NOTE:**  
BENDPAK LIFTS ARE SUPPLIED WITH CONCRETE FASTENERS MEETING THE CRITERIA AS PRESCRIBED BY ASTM E488 - 96(2003). LIFT BUYERS ARE RESPONSIBLE FOR ANY SPECIAL REGIONAL STRUCTURAL AND/OR SEISMIC ANCHORING REQUIREMENTS SPECIFIED BY ANY OTHER AGENCIES AND/OR CODES SUCH AS THE UNIFORM BUILDING CODE (UBC) AND/OR INTERNATIONAL BUILDING CODE (IBC).



INTERNAL BAR CODE - FOR FACTORY AUDIT ONLY 34086

BPK | STYOT | P20KVR | X18576 | HVY DTY/ GVR  
832

THE MANUFACTURE, USE, SALE OR IMPORT OF THIS PRODUCT MAY BE SUBJECT TO ONE OR MORE UNITED STATES PATENTS, OR PENDING APPLICATIONS, OWNED BY BENDPAK, INC.

ENGINEERED BY BENDPAK INC USA

MADE IN CHINA

**Serial\_Tag\_New-2015\_Peel\_Off-5905285.jpg:**

Size: 3"W x 3"H

Material: 2 Mil. Matte Silver Polyester (Flex-PSE)

Print using thermal transfer printer with resin ribbon

Ink: 1 Color-Black

**Manufacturer Packaging Label:**

Size: 5"W x 5"H

Material: White adhesive paper

Ink: U.V. protected CMYK 2/C Process

Print Process: Offset Lithography - 200 line-screen or 300 p.p.i. for digital