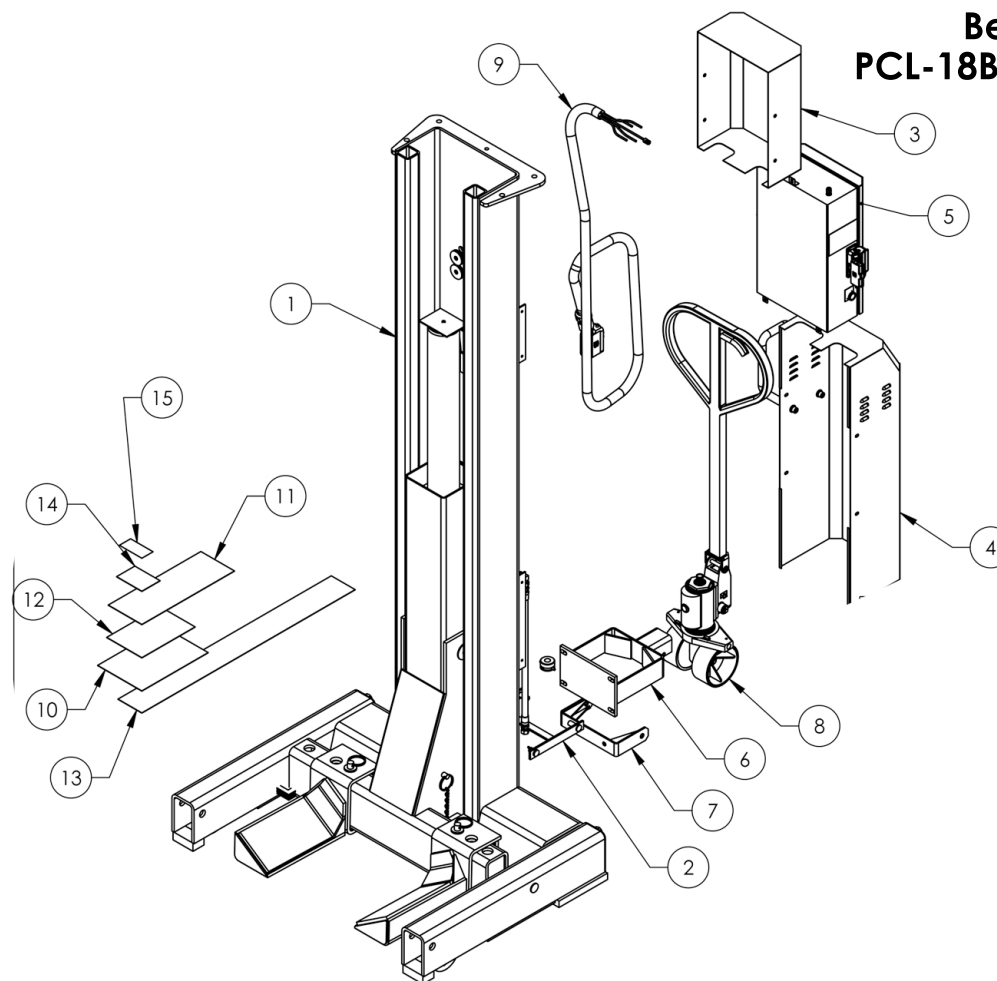


Service Manual

Service Parts & Diagrams

PCL-18B

BendPak SKU 5260130
PCL-18B Production Column
Post A
09/20/16



This guide is a troubleshooting reference used for maintaining and servicing your BendPak product. It provides comprehensive information on identifying serviceable parts and components and assists in troubleshooting problems and performing assembly/disassembly procedures.



BendPak, Inc. Corporate Office
1645 Lemonwood Drive
Santa Paula, CA 93060 USA
Toll Free US/Canada: 1-800-253-2363
Fax: 1-805-933-9160
info@bendpak.com

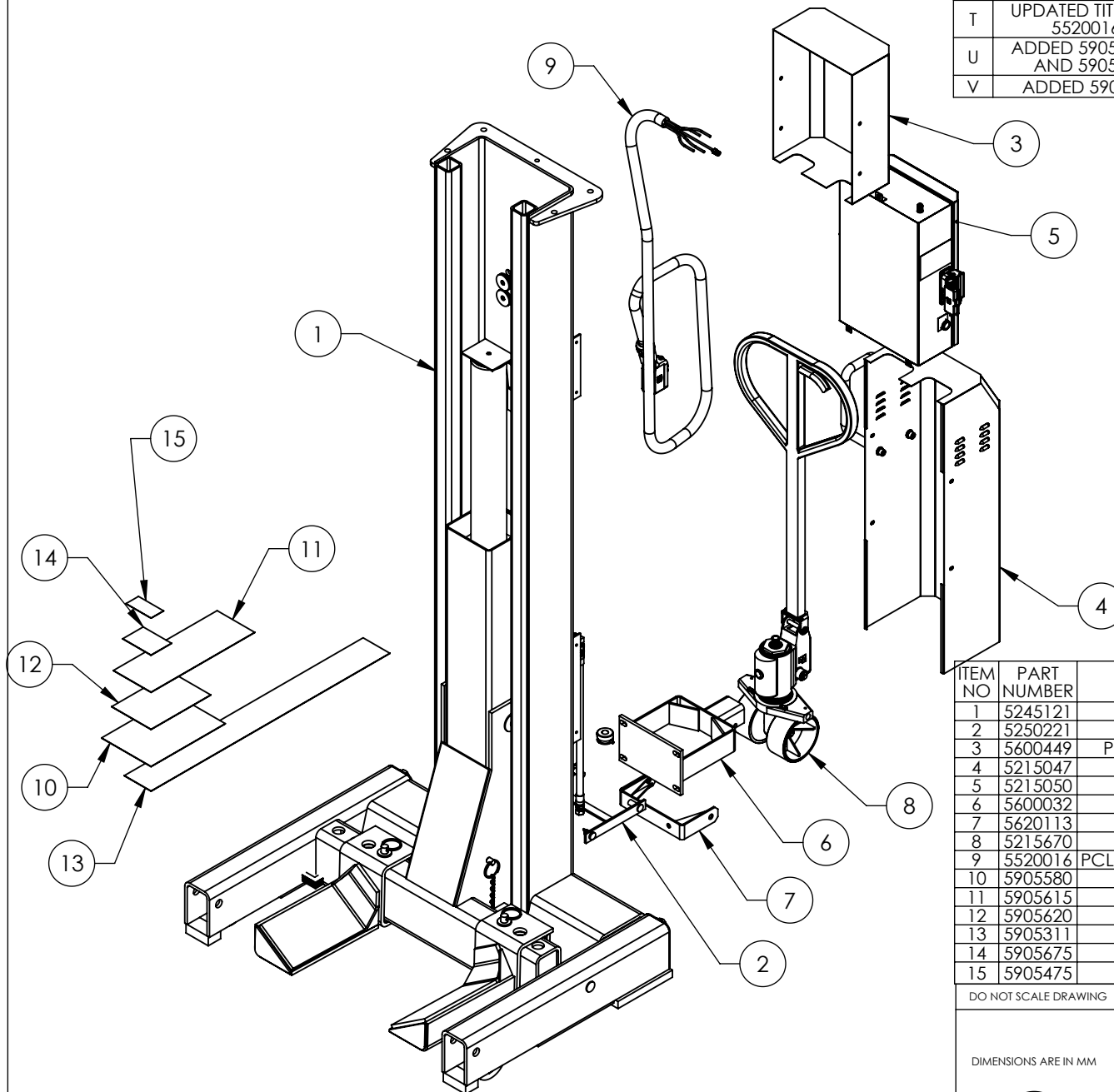
Customer Service Desk / Warranty
Customer Service Representatives
Office Tel: 1-805-933-9970
Toll Free US/Canada: 1-800-253-2363
Fax: 1-805-933-9160
customerservice@bendpak.com

Parts Orders
Customer Service Representatives
Office Tel: 1-805-933-9970
Toll Free US/Canada: 1-800-253-2363
Fax: 1-805-933-9160
parts@bendpak.com

Domestic Sales & Service
USA Sales Representatives
Office Tel: 1-805-933-9970
Toll Free US/Canada: 1-800-253-2363
Fax: 1-805-933-9160
sales@bendpak.com

International Sales & Service
Office Tel: 1-805-933-9970
Exports Department: 1-805-933-9970 Ext. 192
Toll Free US/Canada: 1-800-253-2363
Fax: 1-805-933-9160
bpkexports@bendpak.com



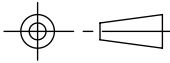
		REVISION			
REV	DESCRIPTION	DATE	EDITED BY	ECO#	
T	UPDATED TITLE REFLECT WHERE USED, ADDED 5520016, UPDATED BOM REVISIONS	08/20/2015	JM	00720	
U	ADDED 5905580, 5905615, 5905620, 5905311, AND 5905675, UPDATED BOM REVISION	11/02/2015	TM	00737	
V	ADDED 5905475, UPDATED BOM REVISION	08/24/2016	DB	00774	

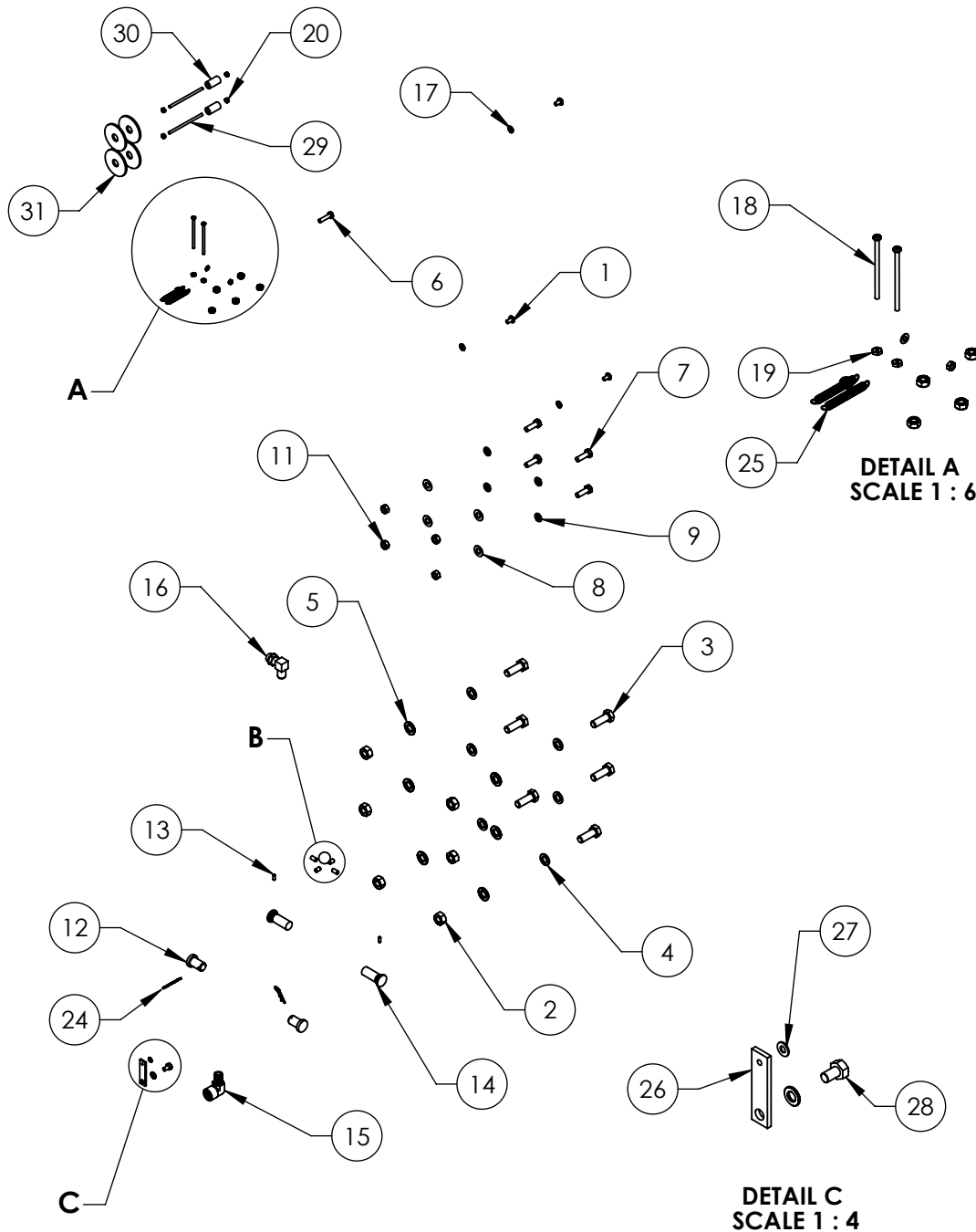


ITEM NO	PART NUMBER	DESCRIPTION	QTY	REV
1	5245121	PCL-18B COLUMN SUPERSTRUCTURE	1	T
2	5250221	PCL-18B PARTS BOX, PRIMARY COLUMN	1	K
3	5600449	PCL-18B DISPLACEMENT SENSOR COVER WELDMENT	1	D
4	5215047	PCL-18B MOTOR COVER ASSEMBLY	1	F
5	5215050	PCL-18B CONTROL BOX ASSEMBLY, POST A	1	K
6	5600032	PCL-18B TOW CART BRACKET WELDMENT	1	F
7	5620113	PCL-18B TOW ANCHOR WELDMENT	1	D
8	5215670	PULL HANDLE ASSEMBLY	1	--
9	5520016	PCL-18B 10/4 SOOW/CAT5E COILD CUSTOM CABLE ASSY.	1	--
10	5905580	PCL-18 ALI SAFETY LABEL KIT	1	--
11	5905615	PCL-18 WARNING LABEL	1	--
12	5905620	PCL-18 INSTRUCTIONS LABEL	1	--
13	5905311	BENDPAK LABEL; 4 x 38" WHITE INK	1	--
14	5905675	MAX CAP NRTL DANGER 18K	1	--
15	5905475	PCL-18B Column Indicator_A	1	--

NOTE: UNLESS OTHERWISE SPECIFIED.



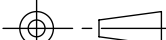
1. SEE SHIPPING INSTRUCTIONS FOR FINAL PACKAGING
2. ALL LABELS TO BE APPLIED AFTER PAINTING.
3. SEE ATTACHED LABEL PLACEMENT SHEET

DO NOT SCALE DRAWING		NAME	DATE	<div> BendPak. <small>MOVING AUTOMATIC SERVICE SOLUTIONS</small></div> <div>1645 LEMONWOOD DR. SANTA PAULA, CA 93060</div>		
DIMENSIONS ARE IN MM		DRAWN	TM			07/14/2009
		CHECKED	DB			08/29/2016
		THIRD ANGLE PROJECTION			TITLE: PCL-18B PRODUCTION COLUMN, POST A	
						
		<div>PROPRIETARY AND CONFIDENTIAL</div> <div>THE INFORMATION CONTAINED IN THIS DRAWING IS THE SOLE PROPERTY OF BENDPAK INC. ANY REPRODUCTION IN PART OR AS A WHOLE WITHOUT THE WRITTEN PERMISSION OF BENDPAK INC. IS PROHIBITED.</div>				
SIZE	DWG. NO.				REV	
		A	5260130		V	
		SCALE: 1:18			SHEET 1 OF 2	



REVISION				
REV	DESCRIPTION	DATE	EDITED BY	ECO#
E	REPLACED 5505350 WITH 5505335	01/25/2013	TM	00574
F	REPLACED 5530027 WITH 5530252, REPLACED (1) 5535357 WITH 5535010, ADDED (1) 5545009	02/15/2013	TM	00578
G	ADDED 5545036, UPDATED TITLE TO REFLECT WHERE USED, UPDATED BOM REVISIONS	08/24/2015	JM	00720

ITEM NO	PART NUMBER	DESCRIPTION	QTY	REV
1	5530079	BPHS M6 x 1.0 x 10	3	--
2	5535354	NUT M12 x 1.75	6	--
3	5530076	HHB M12 x 1.75 x 35mm	6	--
4	5545201	WASHER M12 SPRING LOCK	6	--
5	5545347	WASHER M12 FLAT WASHER	6	--
6	5530756	HHB M6 x 1 x 25	1	--
7	5530010	HHB M8 x 1.25 x 25	4	--
8	5545021	WASHER M8 x Ø20 FLAT	4	--
9	5545202	WASHER M8 x Ø15 SL	4	--
10	5535357	NUT M6 x 1.0 NI	6	--
11	5535001	NUT M8 x 1.25 NI	4	A
12	5505117	PCL-18B TOW ANCHOR PIN	2	C
13	5530157	SSS M4 x 0.7 x 10	2	--
14	5505109	PCL-18B TOW CART TIE PIN	2	C
15	5550109	FIG FLB -06 JIC x -06 F NPT	1	--
16	5550183	FIG FLB -06 JIC -06L ORB	1	--
17	5545005	M6 FLAT WASHER	4	--
18	5530147	BHS 6-32 x 2.5	2	--
19	5535190	HN 6-32	2	--
20	5535010	Nut M4 X 0.7	5	--
21	5745215	PCL-18B WHEELED JACK PIVOT BEARING	1	C
22	5530057	SSS M5 x 0.8 x 10	2	--
23	5530099	SSS M6 x 1.0 x 12	2	--
24	5505335	HAIR PIN #203 Ø0.093" X 1 5/8"	2	--
25	5540041	PULL SPRING Ø6.35 x 50mm	2	A
26	5736532	PCL-18B STRING POT LINKAGE	1	B
27	5545009	WASHER Ø4.3 x Ø9mm x 0.8mm	2	--
28	5530181	HHB M6 x 1.0 x 10	1	--
29	5530233	M4 x 0.7 x 80 THREADED ROD	2	--
30	5746294	PCL-18B STRING POT MOUNTING SPACER	2	B
31	5545036	WASHER M12 x Ø37 x 3mm	4	--

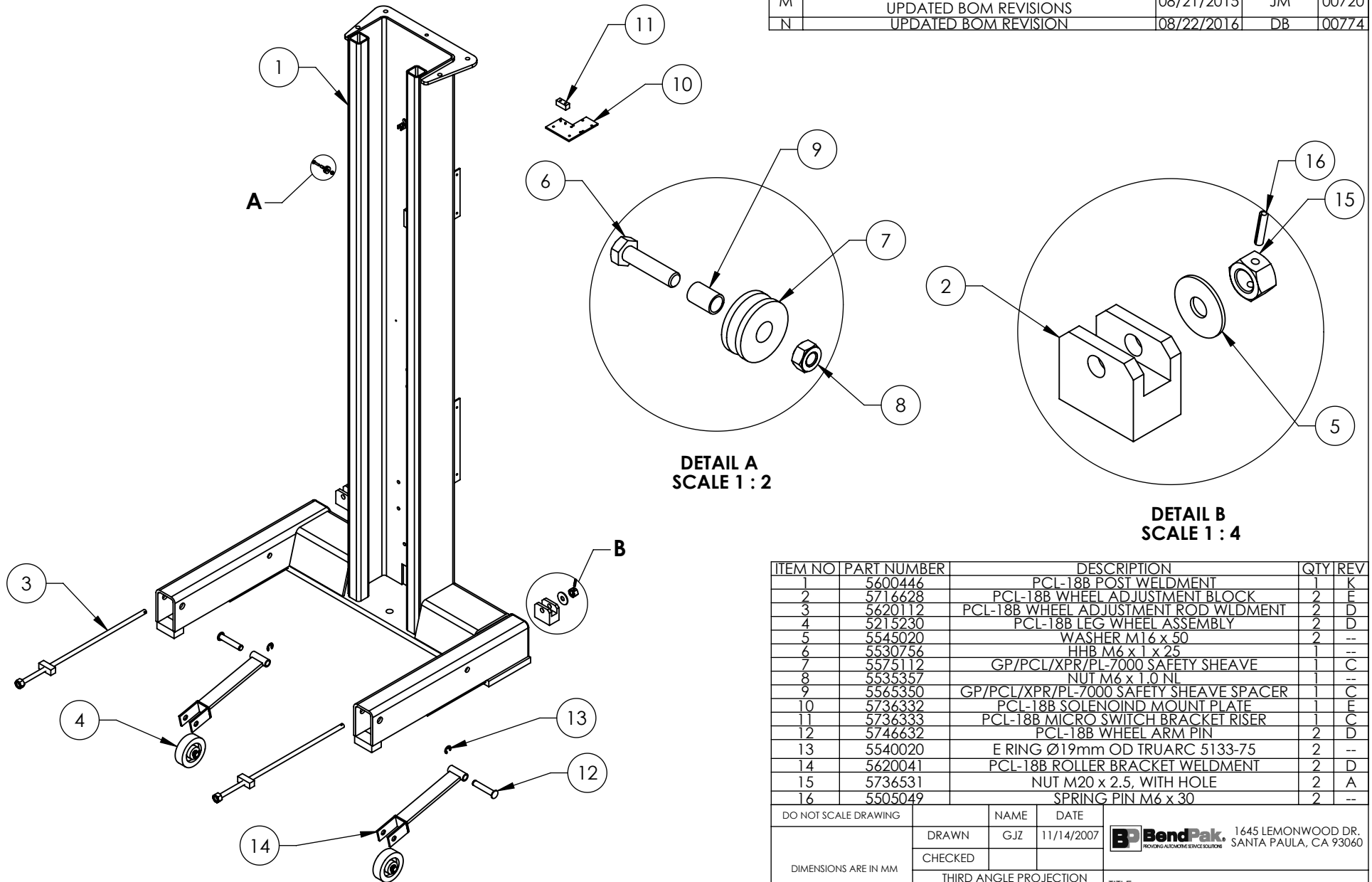
DO NOT SCALE DRAWING		NAME	DATE	<div> BendPak. <small>HOISTING • AUTOMATIC • SERVICE SOLUTIONS</small></div> <div>1645 LEMONWOOD DR. SANTA PAULA, CA 93060</div>	
DRAWN		TM	07/14/2009		
CHECKED		CA	09/23/2015		
<div>DIMENSIONS ARE IN MM</div> <div></div>		THIRD ANGLE PROJECTION		TITLE:	
				PCL-18B PARTS BAG	
		<div>PROPRIETARY AND CONFIDENTIAL</div> <div>THE INFORMATION CONTAINED IN THIS DRAWING IS THE SOLE PROPERTY OF BENDPAK INC. ANY REPRODUCTION IN PART OR AS A WHOLE WITHOUT THE WRITTEN PERMISSION OF BENDPAK INC. IS PROHIBITED.</div>		SIZE	DWG. NO.
A	5174499			G	
SCALE: 1:12				SHEET 1 OF 1	

NOTE: UNLESS OTHERWISE SPECIFIED.

1. SEE SHIPPING INSTRUCTIONS FOR FINAL PACKAGING

NEXT ASSEMBLY
5250221
5250350

REVISION				
REV	DESCRIPTION	DATE	EDITED BY	ECO#
L	UPDATED BOM REVISIONS	04/21/2015	MR	00702
M	UPDATED TITLE TO REFLECT WHERE USED, UPDATED BOM REVISIONS	08/21/2015	JM	00720
N	UPDATED BOM REVISION	08/22/2016	DB	00774



DETAIL A
SCALE 1 : 2

DETAIL B
SCALE 1 : 4

ITEM NO	PART NUMBER	DESCRIPTION	QTY	REV
1	5600446	PCL-18B POST WELDMENT	1	K
2	5716628	PCL-18B WHEEL ADJUSTMENT BLOCK	2	E
3	5620112	PCL-18B WHEEL ADJUSTMENT ROD WLDMENT	2	D
4	5215230	PCL-18B LEG WHEEL ASSEMBLY	2	D
5	5545020	WASHER M16 x 50	2	--
6	5530756	HHB M6 x 1 x 25	1	--
7	5575112	GP/PCL/XPR/PL-7000 SAFETY SHEAVE	1	C
8	5535357	NUT M6 x 1.0 NL	1	--
9	5565350	GP/PCL/XPR/PL-7000 SAFETY SHEAVE SPACER	1	C
10	5736332	PCL-18B SOLENOID MOUNT PLATE	1	E
11	5736333	PCL-18B MICRO SWITCH BRACKET RISER	1	C
12	5746632	PCL-18B WHEEL ARM PIN	2	D
13	5540020	E RING Ø19mm OD TRUARC 5133-75	2	--
14	5620041	PCL-18B ROLLER BRACKET WELDMENT	2	D
15	5736531	NUT M20 x 2.5, WITH HOLE	2	A
16	5505049	SPRING PIN M6 x 30	2	--

DO NOT SCALE DRAWING

NAME DATE

DRAWN GJZ 11/14/2007

CHECKED

THIRD ANGLE PROJECTION

DIMENSIONS ARE IN MM



PROPRIETARY AND CONFIDENTIAL
THE INFORMATION CONTAINED IN THIS DRAWING IS
THE SOLE PROPERTY OF BENDPAK INC. ANY
REPRODUCTION IN PART OR AS A WHOLE WITHOUT
THE WRITTEN PERMISSION OF BENDPAK INC. IS
PROHIBITED.

BendPak 1645 LEMONWOOD DR.
SANTA PAULA, CA 93060

TITLE:
PCL-18B POST ASSEMBLY

SIZE DWG. NO. REV

A 5215014 N

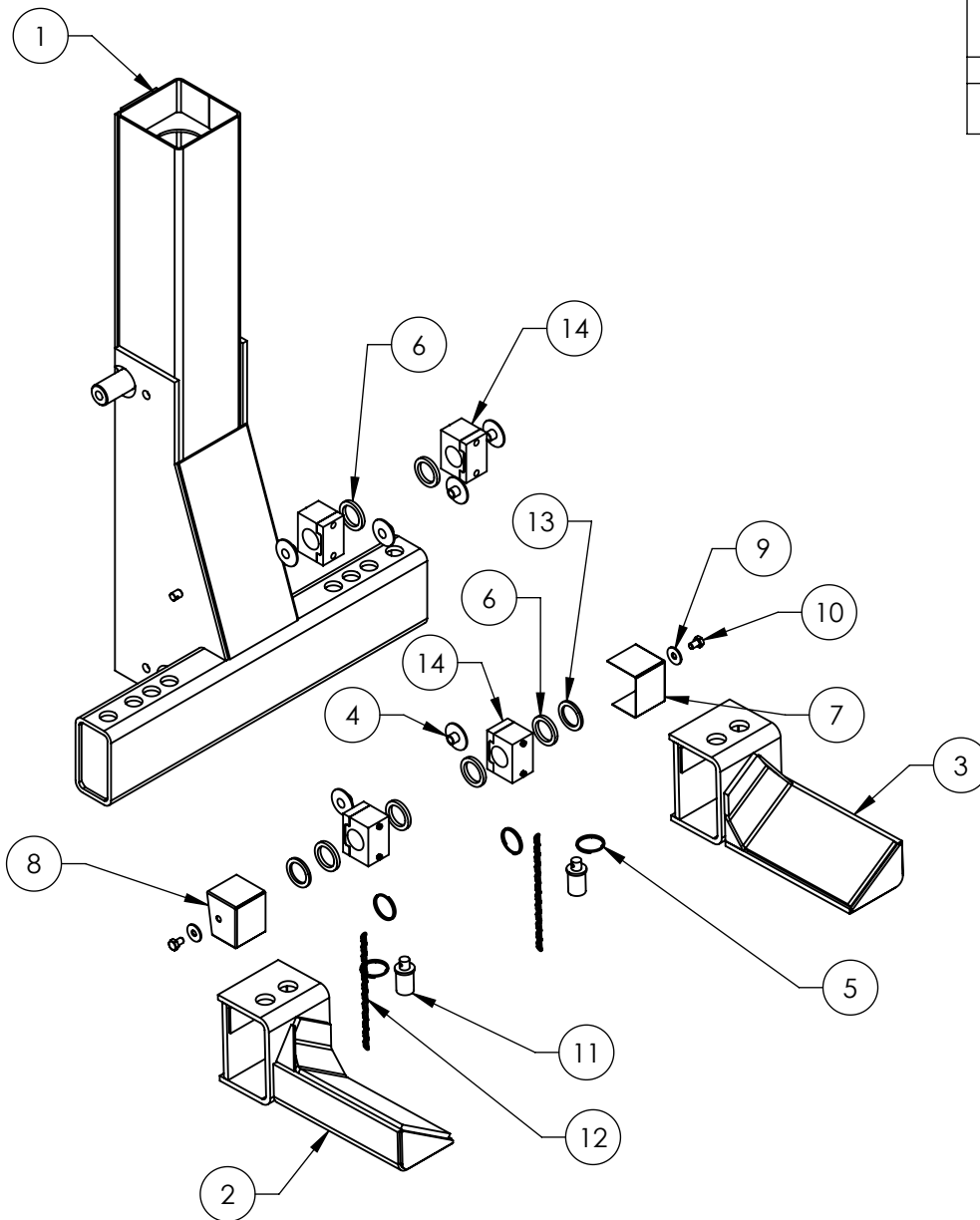
SCALE: 1:20

SHEET 1 OF 1

NOTE: UNLESS OTHERWISE SPECIFIED.

- SEE SHIPPING INSTRUCTIONS FOR FINAL PACKAGING
- ASSEMBLE ITEMS AS SHOWN
- 5620041 MUST SWING FREELY

NEXT ASSEMBLY
5245121



NOTE: UNLESS OTHERWISE SPECIFIED.

1. SEE SHIPPING INSTRUCTIONS FOR FINAL PACKAGING
2. ASSEMBLE ITEMS AS SHOWN
3. ATTACH KEYRINGS TO THE ENDS OF EACH CHAIN
4. ATTACH KEYRINGS TO FORK PIN AND LIFT HEAD

NEXT ASSEMBLY
5245121

REVISION				
REV	DESCRIPTION	DATE	EDITED BY	ECO#
H	REPLACED 5716169 WITH 5716159, REPLACED 5575092 WITH 521542, REPLACED 5600455 WITH 5600885, AND 5600447 WITH 5600884	02/17/2015	MR	00651
J	UPDATED BOM REVISION	03/19/2015	TM	00693
K	UPDATED TITLE TO REFLECT WHERE USED, UPDATED BOM REVISIONS	08/21/2015	JM	00720

ITEM NO	PART NUMBER	DESCRIPTION	QTY	REV
1	5600448	PCL-18B CARRIAGE WELDMENT	1	H
2	5600884	PCL-18B RIGHT FORK ARM WELDMENT	1	B
3	5600885	PCL-18B LEFT FORK ARM WELDMENT	1	B
4	5716156	PCL-18B CARRIAGE SLIDE	6	C
5	5580219	KEYRING 56mm x 3mm	4	--
6	5716159	PCL-18B CARRIAGE SLIDER SPACER	6	F
7	5701424	PCL-18B CARRIAGE ROLLER COVER, R.H.	1	B
8	5701459	PCL-18B CARRIAGE ROLLER COVER, L.H.	1	E
9	5545027	WASHER M12 x Ø37 x 3mm	2	--
10	5530164	HHB M12 x 1.75 x 20	2	--
11	5746619	PCL-18B FORK PIN	2	C
12	5510105	PCL-18B LIFT HEAD PIN CHAIN	2	--
13	5746073	PCL-18B ROLLER BEARING BACKUP PLATE	2	D
14	5215421	PCL-18B CARRIAGE SLIDER ASSEMBLY, BRASS	4	C

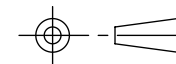
DO NOT SCALE DRAWING

DIMENSIONS ARE IN MM



NAME	DATE
DRAWN GJZ	11/13/2007
CHECKED CA	09/23/2015

THIRD ANGLE PROJECTION



PROPRIETARY AND CONFIDENTIAL
THE INFORMATION CONTAINED IN THIS DRAWING IS THE SOLE PROPERTY OF BENDPAK INC. ANY REPRODUCTION IN PART OR AS A WHOLE WITHOUT THE WRITTEN PERMISSION OF BENDPAK INC. IS PROHIBITED.

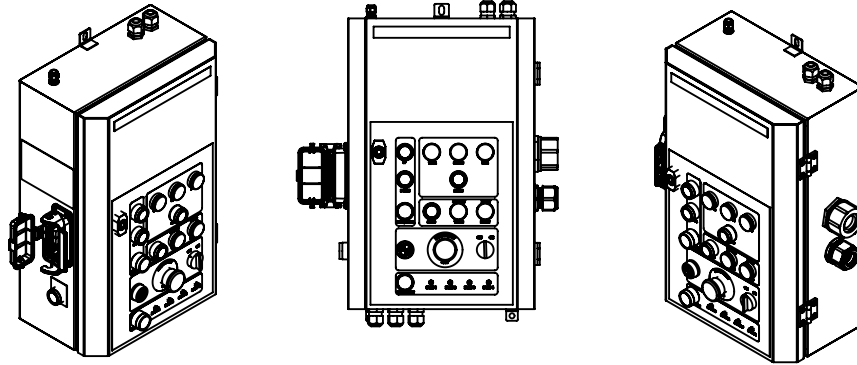
BendPak 1645 LEMONWOOD DR.
SANTA PAULA, CA 93060

TITLE: PCL-18B CARRIAGE ASSEMBLY

SIZE	DWG. NO.	REV
A	5215034	K

SCALE: 1:15

SHEET 1 OF 1



ITEM NO	PART NUMBER	DESCRIPTION	QTY	REV
1	5715368	PCL-18B FOAM TAPE	1	-
2	5520226	HAN 16B-HBM SINGLE LEVER COVER	1	-
3	5520218	HAN 40A AXIAL MODULE, FEMALE	2	-
4	5520216	HAN MODULAR FRAME 16 HOOD 4 MODULE A-D	1	-
5	5520212	CORD CONNECTOR, ALUMINUM 1-1/4"	1	-
6	5520430	5 PORT UNMANGED ETHERNET SWITCH	1	-
7	5620046	PCL-18B CONTROL BOX WELDMENT, POST A	1	G
8	5620047	PCL-18B BOX COVER WELDMENT, POST A	1	F
9	5701464	PCL-18B CONTORL BOX INSIDE PLATE	1	F
10	5545005	M6 FLAT WASHER	4	-
11	5535112	NUT M6 x 1.0	4	-
12	5530237	BHPS M5 x 0.8 x 6	15	-
13	5580120	SURFACE MOUNT HINGE, 1.5" x 1.5"	2	-
14	5530274	FHS M5 x 0.8	8	-
15	5520468	DIN 3 RAIL; 35mm	5	711mm
16	5520469	WIRE DUCT	5	1160mm
17	5520424	THERMAL OVERLOAD 5-8A	1	-
18	5520421	POWER SUPPLY 24VDC, 2.5A, 60W DIN RAIL	1	-
19	5520417	DL05-06 ETHERNET MODULE	1	-
20	5520416	CURRENT ANALOGE MODULE INPUT 4-20mA	1	-
21	5520422	3 POLE CONTACTOR 50A 24VDC COIL	1	-
22	5520641	LED INDICATOR, RED, 24VDC	4	-
23	5520644	22mm PANEL MOUNT ILLUMINATED PUSH BUTTON/GREEN	1	-
24	5520026	22mm PANEL MOUNT ILLUMINATED N.O. PUSH BUTTON/RED	1	-
25	5520427	2 POS SELECTOR SWITCH, 1 N.O.	1	-
26	5520401	PUSH BUTTON, 22mm, EMERGENCY	1	-
27	5520429	AUDIBLE BUZZER, 22mm, RED LED, 24V	1	-
28	5520638	IND LIGHT, 22mm, 24V, LED, GREEN	2	-
29	5520640	IND LIGHT, 22mm, 24VDC, LED, YELLOW	2	-



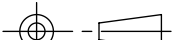
NOTE: UNLESS OTHERWISE SPECIFIED.

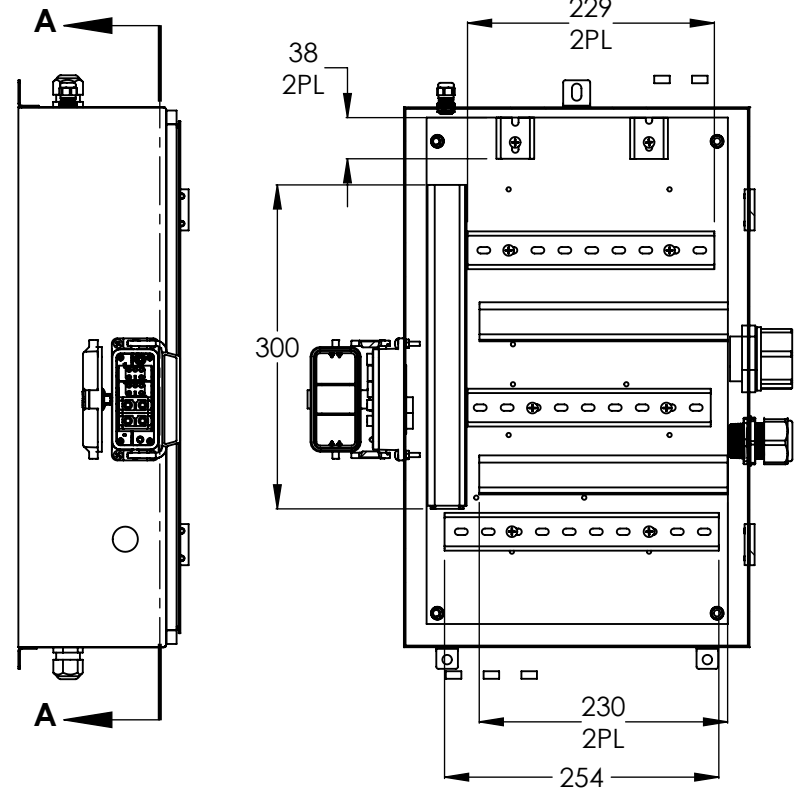
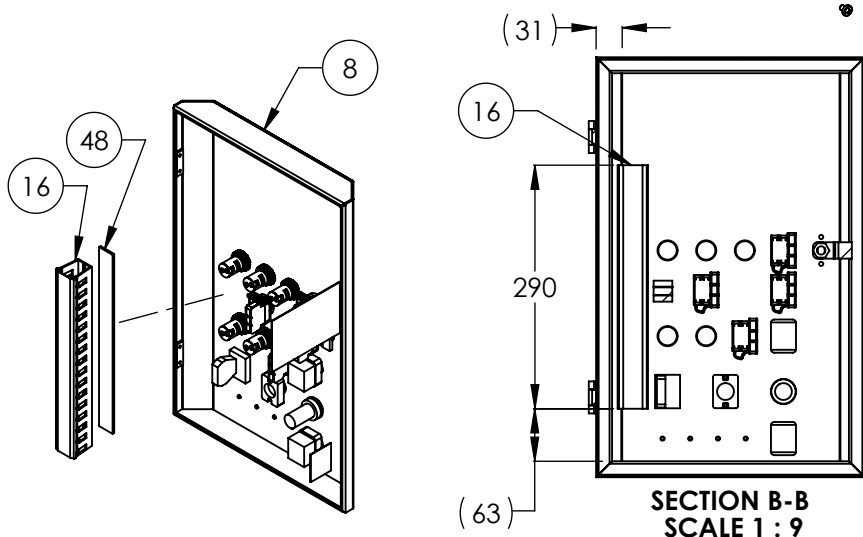
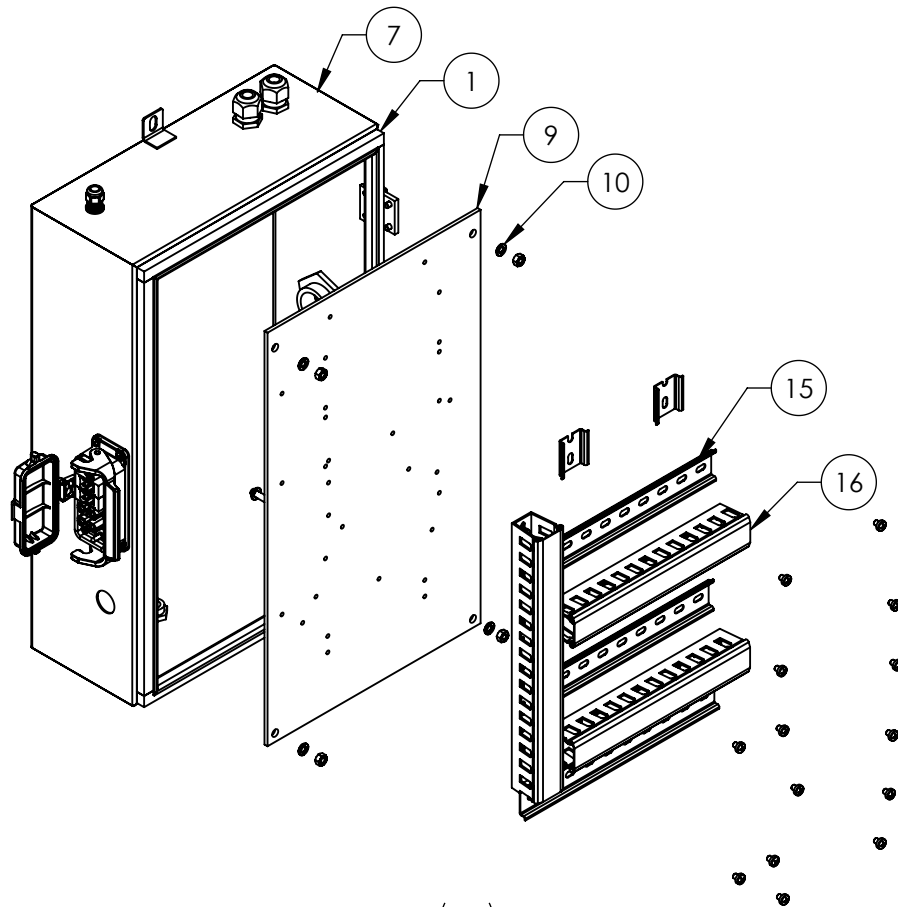
- SEE SHIPPING INSTRUCTIONS FOR FINAL PACKAGING
- ASSEMBLE ITEMS AS SHOWN

NEXT ASSEMBLY
5260130

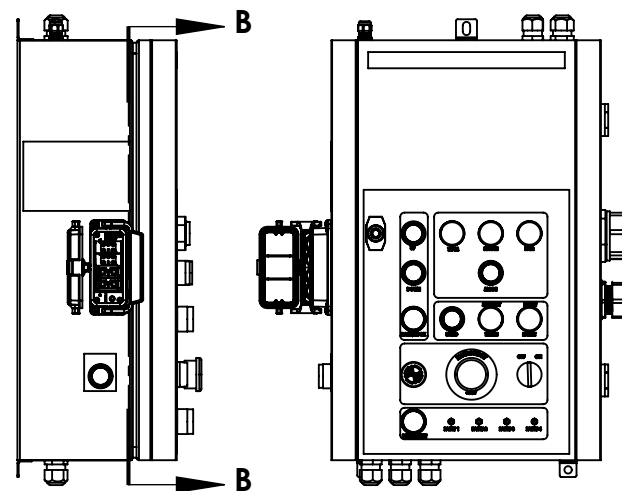
REVISION				
REV	DESCRIPTION	DATE	EDITED BY	ECO#
H	REPLACED 5530094 WITH 5530274, REPLACED 5530094 WITH 5530274, UPDATED TITLE TO REFLECT WHERE USED, ADDED ELECTRONIC COMPONENTS, ADDED 5530174, UPDATED BOM REVISIONS	08/26/2015	JM	00720
J	ADDED 5905621 AND 5905622, REPLACED 5520018 WITH 5520020	10/28/2015	TM	00737
K	REPLACED 5520643 WITH 5520026, UPDATED BOM REVISION	08/22/2016	DB	00774

ITEM NO	PART NUMBER	DESCRIPTION	QTY	REV
30	5520639	IND LIGHT, 22mm, 24VDC, LED, RED	1	-
31	5520545	CONTROLLER 20 INPUT/16 RELAY OUTPUT 24V	1	-
32	5520437	END COVER FOR DN-T12-A OR DN-T10-A SERIES	3	-
33	5520436	TERMINAL BLOCK 10AWG, 30A, GRAY	20	-
34	5520434	TERMINAL BOLCK, 6AWG, 65A, GRAY	12	-
35	5520435	END COVER FOR DN-T8 OR DN-T6	6	-
36	5520433	FUSE HOLDER 6AWG 30A	3	-
37	5520432	GROUNDING TERMINAL 24-10 AWG	4	-
38	5520423	3 POLE CONTACTOR 9A 24VDC COIL	1	-
39	5550479	CORD CRIMP	5	-
40	5520438	TERMINAL BLOCK END BRACKET, SCREW DOWN, 9mm WIDE	4	-
41	5520441	GROUND TERMINAL 6AWG	2	-
42	5520642	22mm PANEL MOUNT MOMENTARY PUSH BUTTON SWITCH/BLACK	5	-
43	5520581	FUSE, 5A, 1-1/4" X 1/4"	1	-
44	5326088	FUSE, 2A, 1-1/4" X 1/4"	2	-
45	5520439	JUMPER, MULTIPLE DINNNECTOR TERN BLKS	1	-
46	5520442	TERMINAL JUMPER DN-55J6 FOR DN-T6	1	-
47	5520172	VARISTOR 30V 1KA DISC 10MM	4	-
48	5520249	3M VHB FOAM TAPE 75935A31	1	-
49	5520466	PCL-18B DOOR LOCK ASSEMBLY	1	-
50	5905635	LABEL; PCL-18; CONTROL PANEL BUTTONS/PRIMARY	1	-
51	5550514	CORD GRIP, M32 X 1.5	1	-
52	5550513	CORD GRIP, PG-9	1	-
53	5530174	PHPS M4 x 0.7 x 20	4	-
54	5535010	Nut, M4 X 0.7	4	-
55	5520443	DL06 CPU BATTERY	1	-
56	5520213	HAN ES MODULE, CAGE CLAMP MALE	2	-
57	5905234	WIRE MARKER, .25" SQUARE	A/R	-
58	5520017	PCL-18B CAT5 CABLE ASSEMBLY, 380mm L	1	A
59	5520020	PCL-18B CAT5 CABLE ASSEMBLY, COLUMN A, B & C, 570mm L	1	A
60	5905622	PCL-18B CALIBRATION BUTTON LABEL	1	--
61	5905621	PCL-18B CALIBRATION LABEL	1	--


DO NOT SCALE DRAWING		NAME		DATE		BendPak. 1645 LEMONWOOD DR. SANTA PAULA, CA 93060 <small>PROVIDING AUTOMATE SERVICE SOLUTIONS</small>		
DIMENSIONS ARE IN MM		DRAWN	GJZ	12/11/2007				
		CHECKED	DB	08/29/2016				
		THIRD ANGLE PROJECTION				TITLE:		
						PCL-18B CONTROL BOX ASSEMBLY, POST A		
		<p>PROPRIETARY AND CONFIDENTIAL</p> <p>THE INFORMATION CONTAINED IN THIS DRAWING IS THE SOLE PROPERTY OF BENDPAK INC. ANY REPRODUCTION IN PART OR AS A WHOLE WITHOUT THE WRITTEN PERMISSION OF BENDPAK INC. IS PROHIBITED.</p>				SIZE	DWG. NO.	REV
						A	5215050	K
						SCALE: 1:5		
						SHEET 1 OF 7		

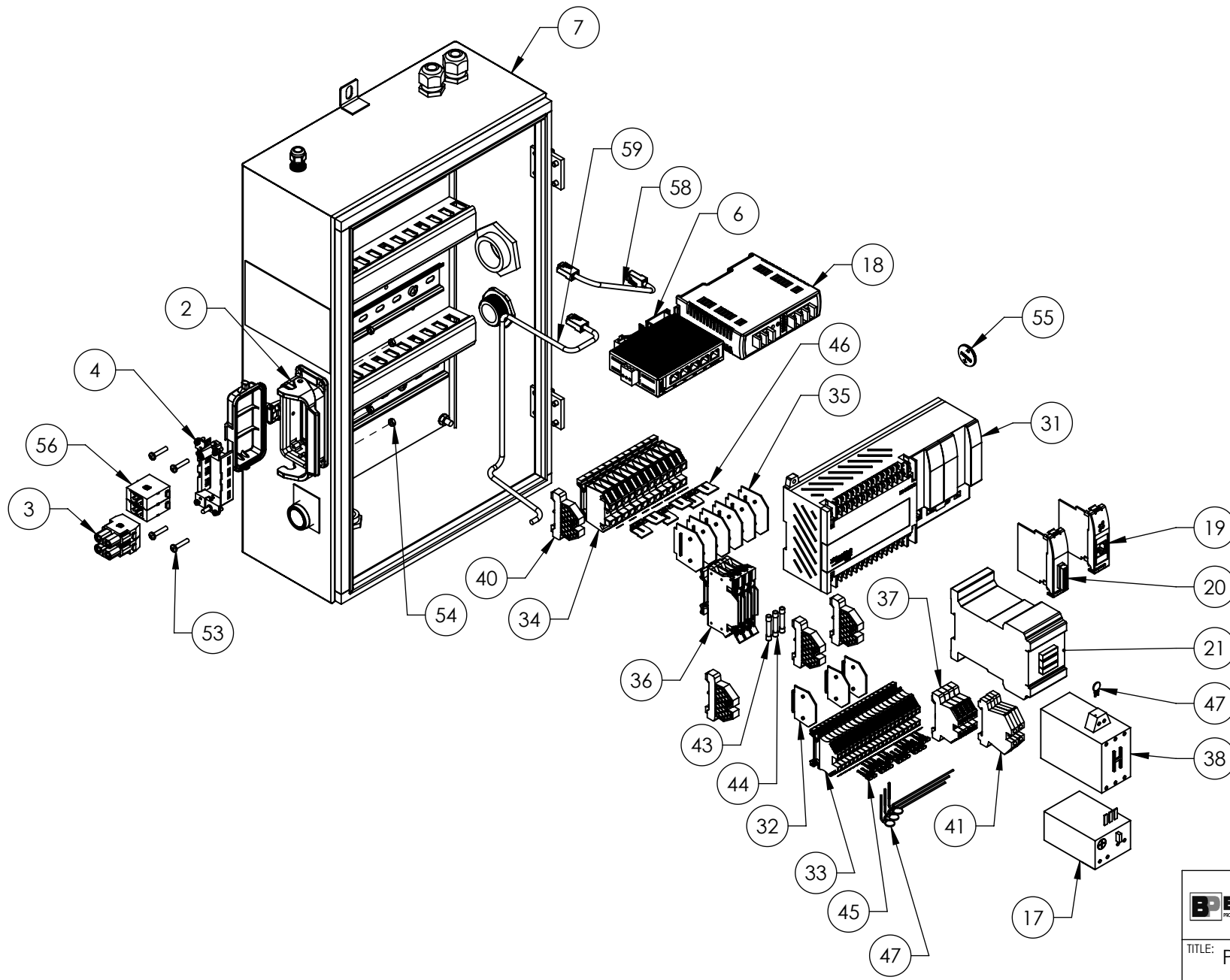


SECTION A-A
SCALE 1 : 7



SECTION B-B
SCALE 1 : 9

 1645 LEMONWOOD DR. SANTA PAULA, CA 93060		
TITLE: PCL-18B CONTROL BOX ASSEMBLY, POST A		
SIZE DWG. NO. A 5215050	REV K	SCALE: 1:5
		SHEET 2 OF 7



BendPak 1645 LEMONWOOD DR.
SANTA PAULA, CA 93060
INDUSTRIAL AUTOMATIC SERVICE DIVISION

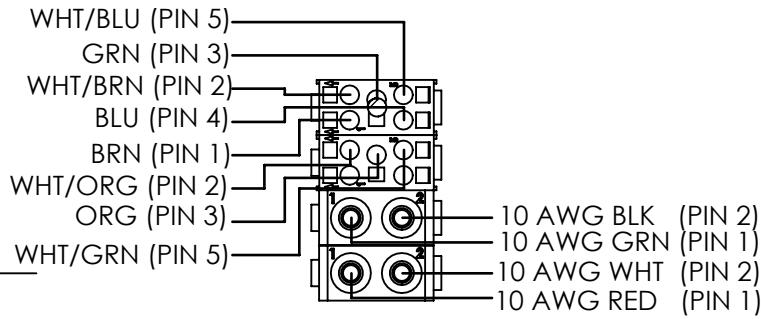
TITLE: PCL-18B CONTROL BOX
ASSEMBLY, POST A

SIZE	DWG. NO.	REV
A	5215050	K

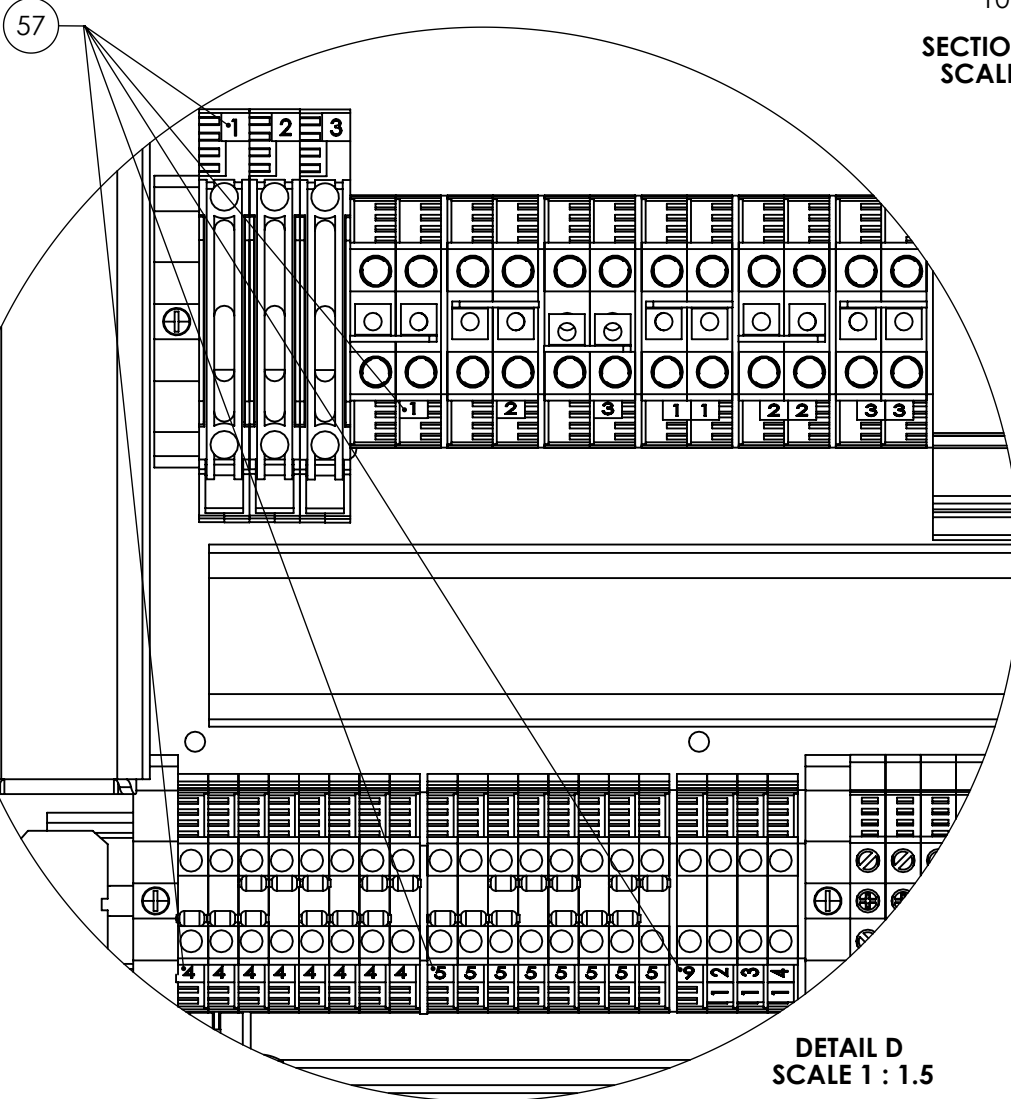
SCALE: 1:5

SHEET 3 OF 7

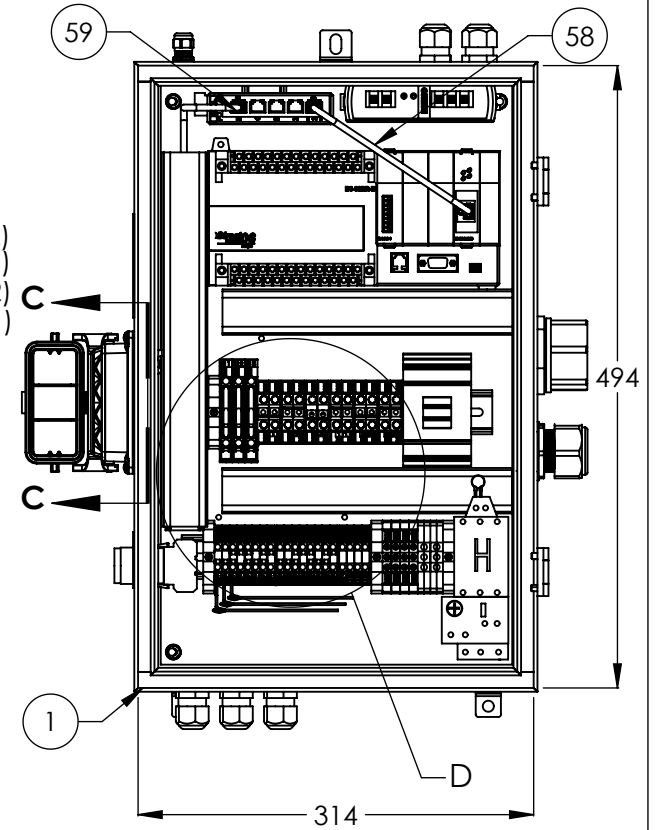
PART OF
CABLE ASSEMBLY
5520018



SECTION C-C
SCALE 1 : 2



DETAIL D
SCALE 1 : 1.5



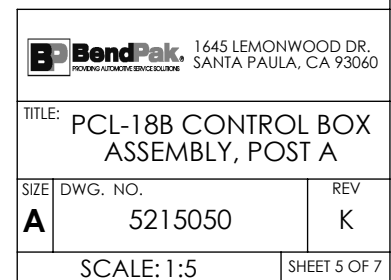
BendPak 1645 LEMONWOOD DR.
SANTA PAULA, CA 93060

TITLE: PCL-18B CONTROL BOX
ASSEMBLY, POST A

SIZE	DWG. NO.	REV
A	5215050	K

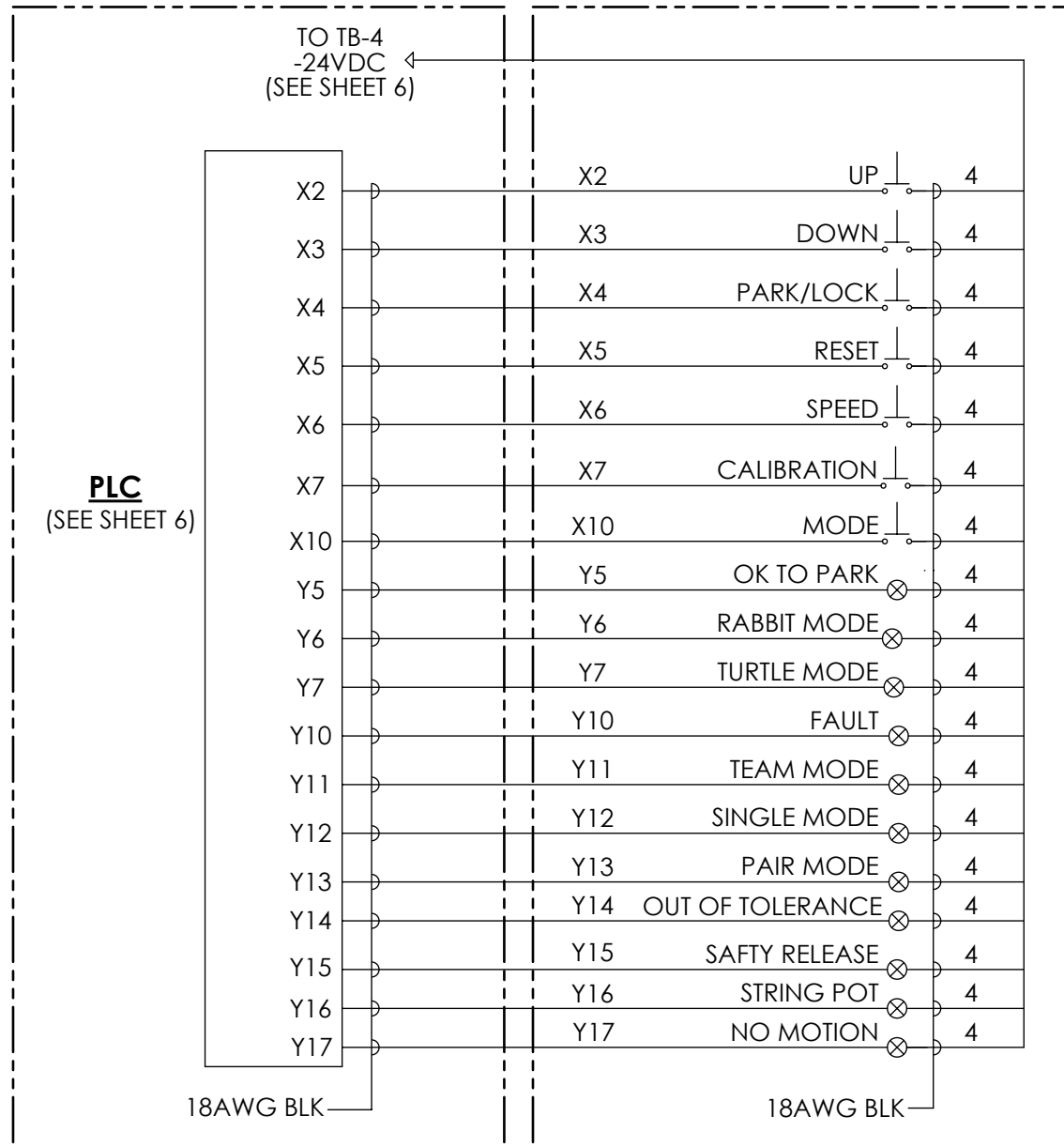
SCALE: 1:5


SHEET 4 OF 7



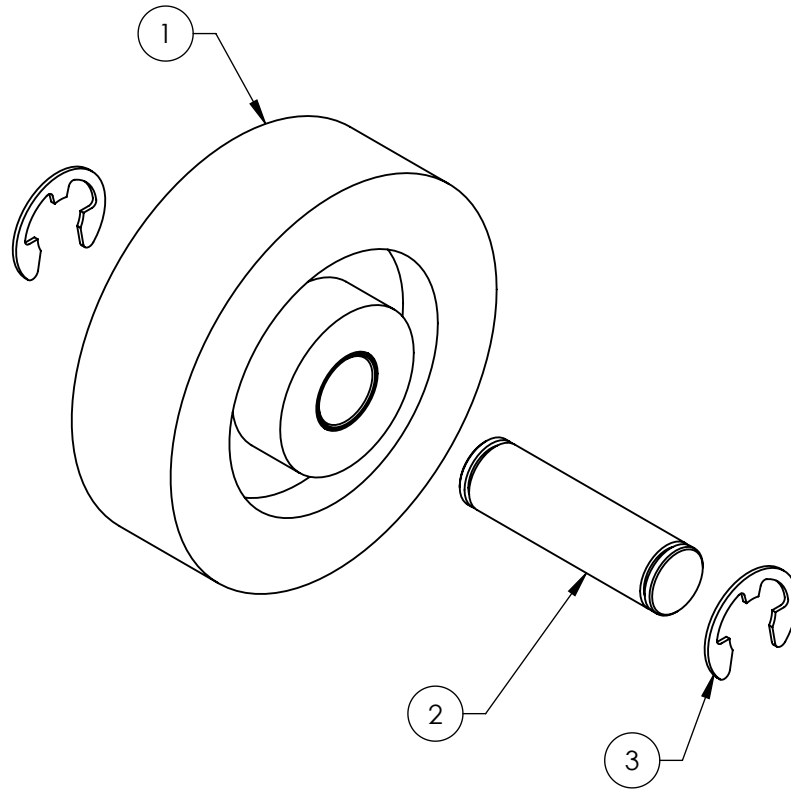
CONTROL BOX A

CONTROL BOX A DOOR ASSEMBLY



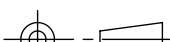



		1645 LEMONWOOD DR. SANTA PAULA, CA 93060
TITLE: PCL-18B CONTROL BOX ASSEMBLY, POST A		
SIZE A	DWG. NO. 5215050	REV K
SCALE: 1:5		SHEET 7 OF 7

REVISION				
REV	DESCRIPTION	DATE	EDITED BY	ECO#
B	PCL-18 WAS MCL-18, UPDATED BOM REVISIONS	09/29/2009	MT	00303
C	UPDATED BOM REVISIONS	01/08/2010	MT	00331
D	UPDATED TITLE TO REFLECT WHERE USED, UPDATED BOM REVISIONS	08/21/2015	JM	00720



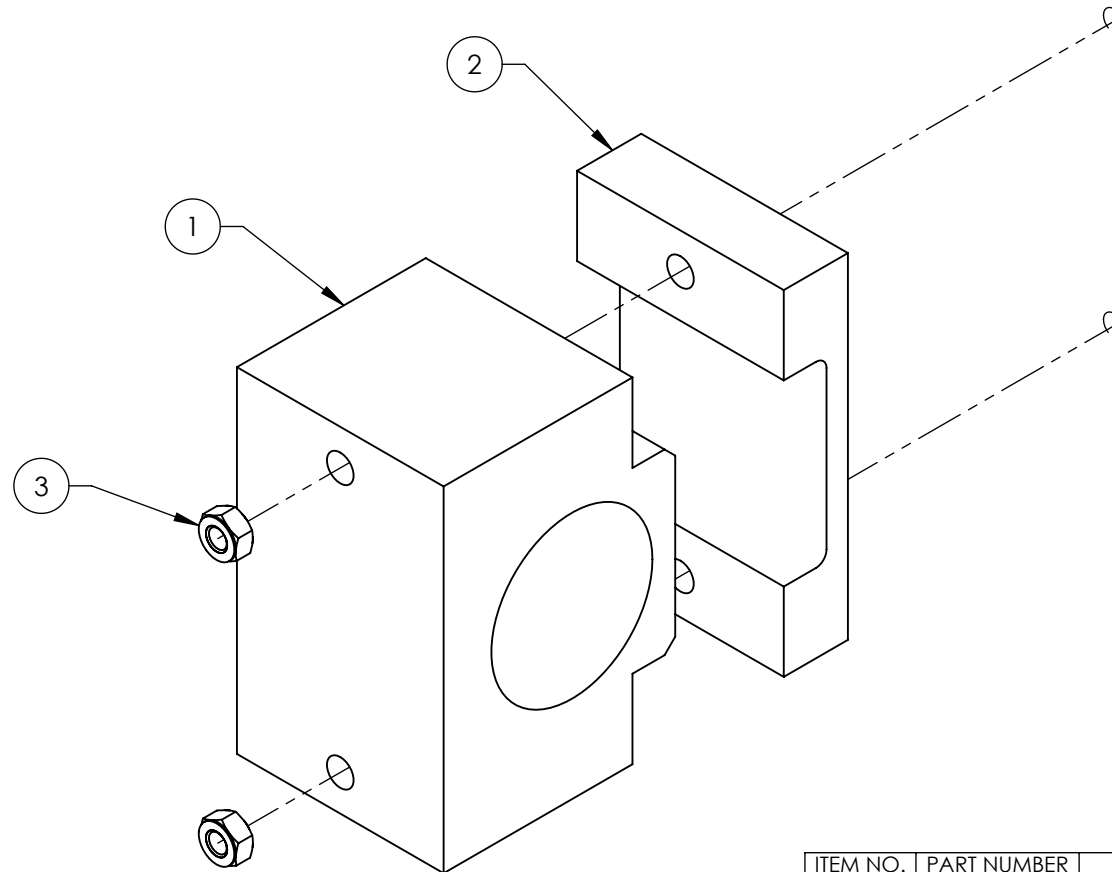
ITEM NO	PART NUMBER	DESCRIPTION	QTY	REV
1	5215231	PCL-18B CASTER WHEEL ASSEMBLY	1	C
2	5746623	PCL-18B ROLLER PIN	1	D
3	5540030	E RING Ø22 OD TRUARC 5133-87	2	-

DO NOT SCALE DRAWING		NAME	DATE		
		DRAWN	AC	06/30/2009	 BendPak. <small>ROLLING AUTOMATIC SERVICE SOURCE</small>
		CHECKED	CA	09/23/2015	
DIMENSIONS ARE IN MM		THIRD ANGLE PROJECTION			TITLE:
					PCL-18B LEG WHEEL ASSEMBLY
		PROPRIETARY AND CONFIDENTIAL THE INFORMATION CONTAINED IN THIS DRAWING IS THE SOLE PROPERTY OF BENDPAK INC. ANY REPRODUCTION IN PART OR AS A WHOLE WITHOUT THE WRITTEN PERMISSION OF BENDPAK INC. IS PROHIBITED.			SIZE DWG. NO.
					A 5215230
					D
					SCALE: 1:2
					SHEET 1 OF 1

NOTE: UNLESS OTHERWISE SPECIFIED.

1. ASSEMBLE ITEMS AS SHOWN

REVISION				
REV	DESCRIPTION	DATE	EDITED BY	ECO#
A	PRODUCTION RELEASE DERIVED FROM 5215409	02/18/2015	MR	00651
B	UPDATED BOM REVISION	06/08/2015	TM	00702
C	UPDATED TITLE TO REFLECT WHERE USED, UPDATED BOM REVISIONS	08/21/2015	JM	00720



ITEM NO.	PART NUMBER	DESCRIPTION	QTY.	REV
1	5736348	PCL-18B CARRIAGE SLIDER HOLDER	1	C
2	5716104	PCL-18B BRASS CARRIAGE SLIDER	1	C
3	5535357	NUT M6 x 1.0 NL	2	--

DO NOT SCALE DRAWING		NAME	DATE	BendPak. 1645 LEMONWOOD DR. SANTA PAULA, CA 93060 <small>WORKING TOGETHER SINCE 1978</small>
DIMENSIONS ARE IN MM 		DRAWN	AC 11/11/2010	
		CHECKED	CA 09/23/2015	
THIRD ANGLE PROJECTION 		TITLE: PCL-18B CARRIAGE SLIDER ASSEMBLY, BRASS		
		SIZE	DWG. NO.	REV
		A	5215421	C
SCALE: 2:3			SHEET 1 OF 1	

NOTE: UNLESS OTHERWISE SPECIFIED.

1. ASSEMBLE ITEMS AS SHOWN

NEXT ASSEMBLY
5215034

PROPRIETARY AND CONFIDENTIAL
THE INFORMATION CONTAINED IN THIS DRAWING IS
THE SOLE PROPERTY OF BENDPAK INC. ANY
REPRODUCTION IN PART OR AS A WHOLE WITHOUT
THE WRITTEN PERMISSION OF BENDPAK INC. IS
PROHIBITED.

PART SPECIFICATION FORM

BENDPAK Number:	5215670
MRP Description:	PULL HANDLE ASSEMBLY
Date:	05/01/2015
ECO :	00702

1. Engineering Specification

Application:

HAND PUMP JACK

Detailed Description:

Hand Pallet Truck Assembly include handle, pump unit and back wheel.

ROD HEAD: .45" / 11mm HEIGHT

CENTER OF ROD HEAD TO FRONT EDGE OF PUMP BODY: 3" / 72mm

WIDTH OF PUMP BODY: 3.6" / 92mm

TOP OF ROD HEAD TO BOTTOM OF RHOMBUS PLATE: 9-1/2" / 184.15mm

LENGTH OF ROMBUS PLATE: 10" / 258mm

WHEELS: Ø200 x 50mm W

ADDITIONAL CONTACT INFORMATION:

Changzhou Yi-Lift material handling equipment Co., Ltd.

Xue shu xiang, Yaoguan Town,

Wujin District, Changzhou 213102 Jiangsu, P.R. China

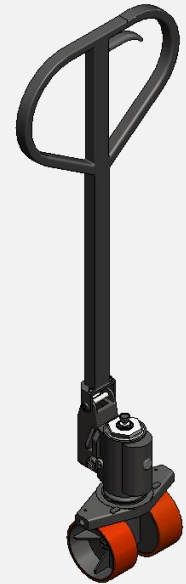
Contact Name: Jack

Tel: 0086-0510-68866121

Fax: 0086-0510-82730160

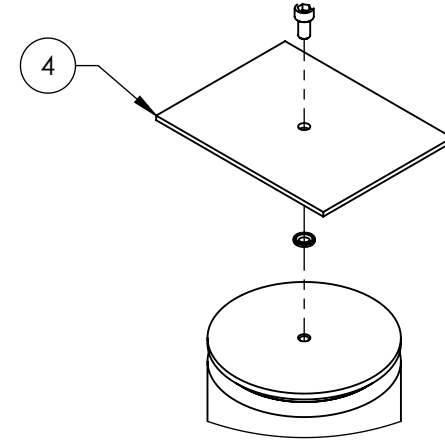
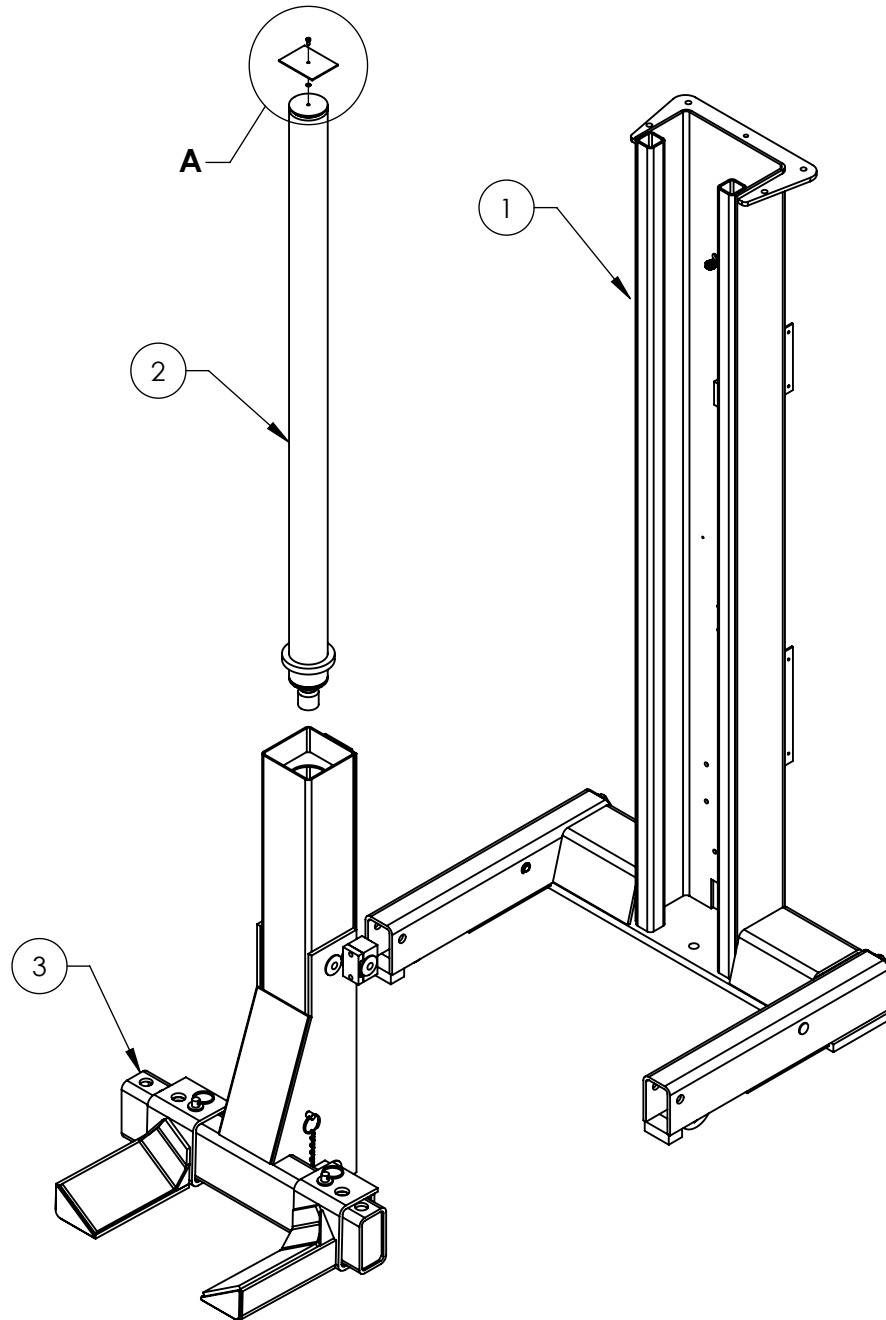
E-mail: jack@yi-lift.com

Http: www.yi-lift.com



2. Vendor Information

Approved Vendor	Vendor Part #	Contact #	Preferred Vendor
1) CHANGZHOU YI-LIFT MATERIAL HANDLING EQUIPMENT CO., LTD.	TYPE9	0086-0510-68866121 jack@yi-lift.com	YES
2)			
3)			



DETAIL A
SCALE 1 : 4



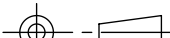
NOTE: UNLESS OTHERWISE SPECIFIED.

1. SEE SHIPPING INSTRUCTIONS FOR FINAL PACKAGING
2. ASSEMBLE ITEMS AS SHOWN

NEXT ASSEMBLY
5260130
5260330
5260331
5260333

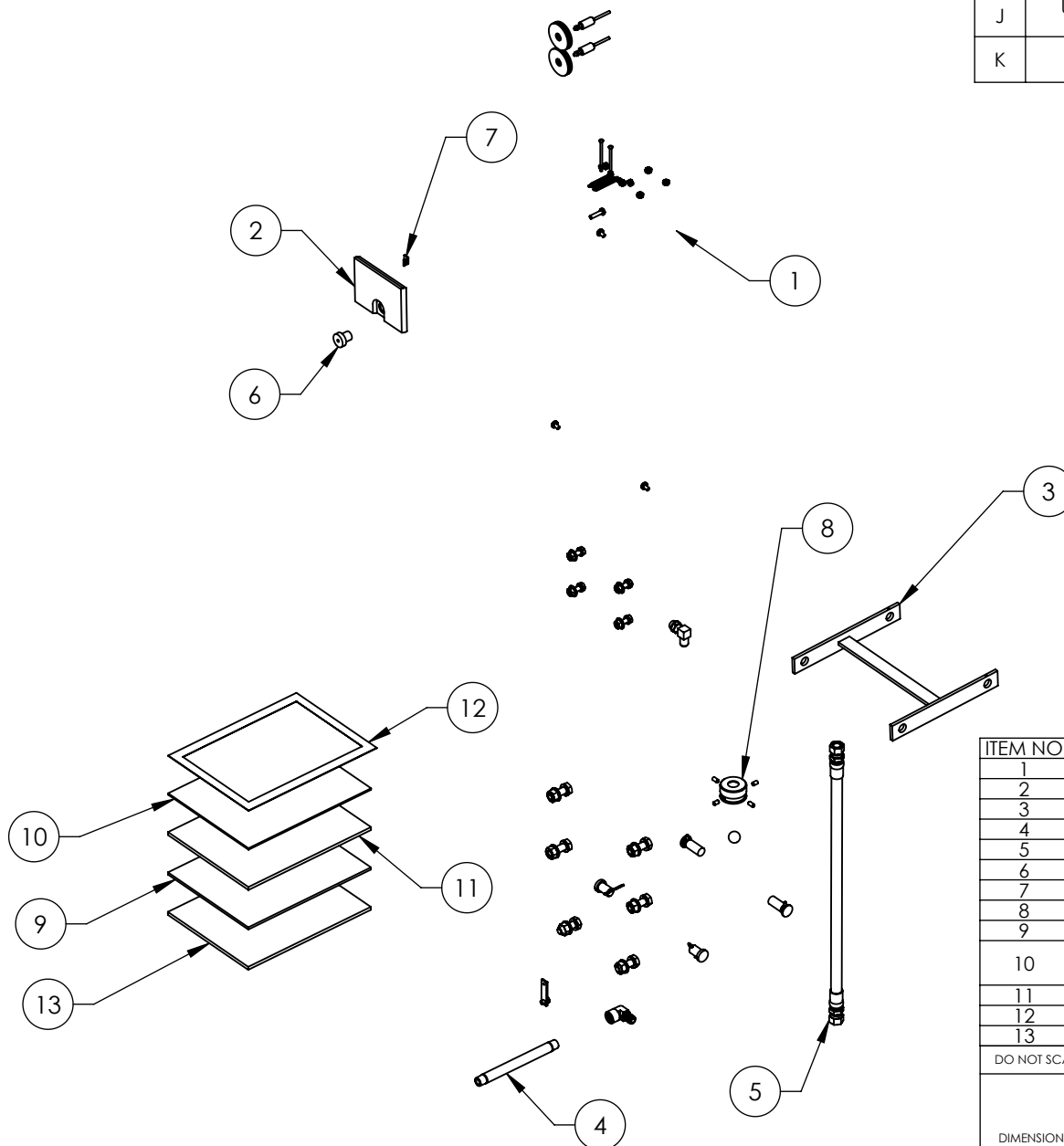
REVISION				
REV	DESCRIPTION	DATE	EDITED BY	ECO#
Q	UPDATED BOM REVISION	04/21/2015	MR	00702
R	UPDATED TITLE TO REFLECT WHERE USED , UPDATED BOM REVISIONS	08/21/2015	JM	00720
T	UPDATED BOM REVISION	08/22/2016	DB	00774

ITEM NO	PART NUMBER	DESCRIPTION	QTY	REV
1	5215014	PCL-18B POST ASSEMBLY	1	N
2	5502304	CYLINDER ASSEMBLY Ø3.5 x 69	1	C
3	5215034	PCL-18B CARRIAGE ASSEMBLY	1	K
4	5701103	PCL-18B CYLINDER STOPPER	1	C



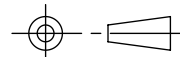

DO NOT SCALE DRAWING		NAME	DATE	<div> BendPak. <small>WORKING AUTOMotive SERVICE SOLUTIONS</small></div> <div>1645 LEMONWOOD DR. SANTA PAULA, CA 93060</div>	
DIMENSIONS ARE IN MM <div></div>		DRAWN	TM 07/14/2009		
		CHECKED	DB 08/29/2016		
		THIRD ANGLE PROJECTION		TITLE:	
		<div></div>		PCL-18B COLUMN SUPERSTRUCTURE	
		<div>PROPRIETARY AND CONFIDENTIAL THE INFORMATION CONTAINED IN THIS DRAWING IS THE SOLE PROPERTY OF BENDPAK INC., ANY REPRODUCTION IN PART OR AS A WHOLE WITHOUT THE WRITTEN PERMISSION OF BENDPAK INC. IS PROHIBITED.</div>		SIZE DWG. NO.	
		A		5245121	REV T
		SCALE: 1:20			SHEET 1 OF 1

PROPRIETARY AND CONFIDENTIAL
THE INFORMATION CONTAINED IN THIS DRAWING IS
THE SOLE PROPERTY OF BENDPAK INC. ANY
REPRODUCTION IN PART OR AS A WHOLE WITHOUT
THE WRITTEN PERMISSION OF BENDPAK INC. IS
PROHIBITED.

REVISION				
REV	DESCRIPTION	DATE	EDITED BY	ECO#
H	ADDED 5905675	03/12/2015	VB	00651
J	UPDATED TITLE TO REFLECT WHERE USED , UPDATED BOM REVISIONS	08/24/2015	JM	00720
K	REMOVED 5900151, 5905580, 5905615, 5905620, 5905105, AND 5905675	11/02/2015	TM	00737



ITEM NO	PART NUMBER	DESCRIPTION	QTY	REV
1	5174499	PCL-18B PARTS BAG	1	G
2	5600704	PCL-18B SAFETY BLOCK WELDMENT	1	C
3	5600278	PCL-18B TOW CART TIE PLATE WELDMENT	1	D
4	5756113	PCL-18B HYDRAULIC TUBE	1	C
5	5570872	PCL-18B HYD. HOSE ASSY Ø10 x 850mm DS	1	C
6	5746615	PCL-18B SAFETY PIVOT PIN	1	D
7	5721099	PCL-18B SOLENOID TRIP BRACKET	1	D
8	5746257	PCL-18B WHEELED JACK RETAINER RING	1	C
9	5900147	SAFETY MANUAL ALI / SM 93-1	1	-
10	5900152	ALIGN OIM OPERATION INSPECTION & MAINTENANCE	1	-
11	5900280	ALI/LP FRAME ENGAGING LIFTS GUIDE	1	-
12	5905151	SAFETY TIPS CARD ALI-ST 90	1	-
13	5900176	PCL-18 INSTALLATION MANUAL	1	-

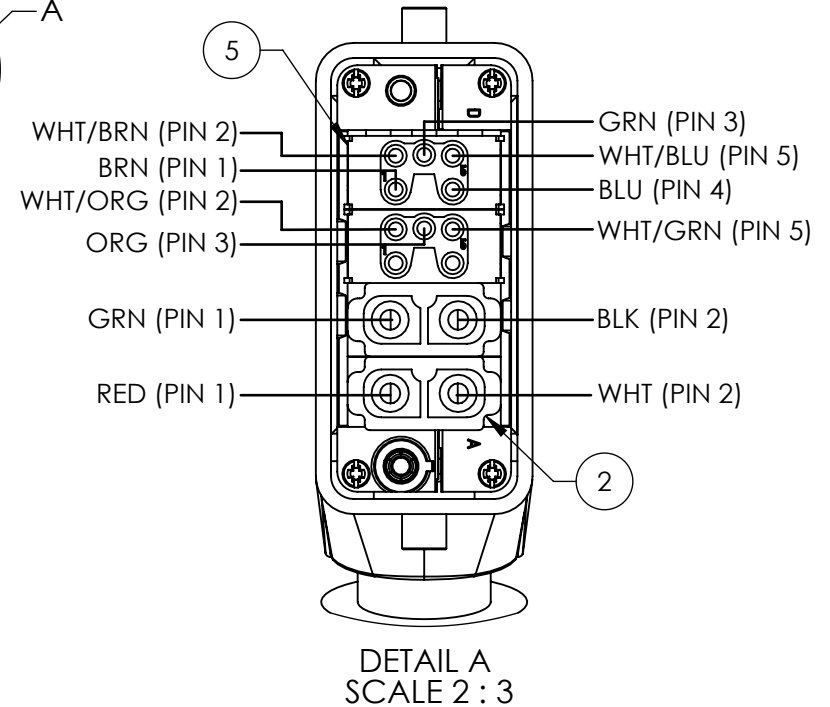
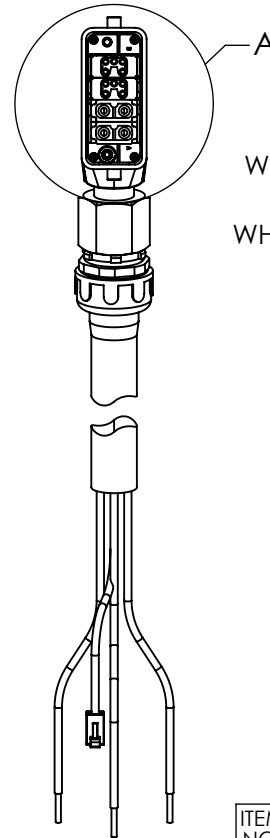
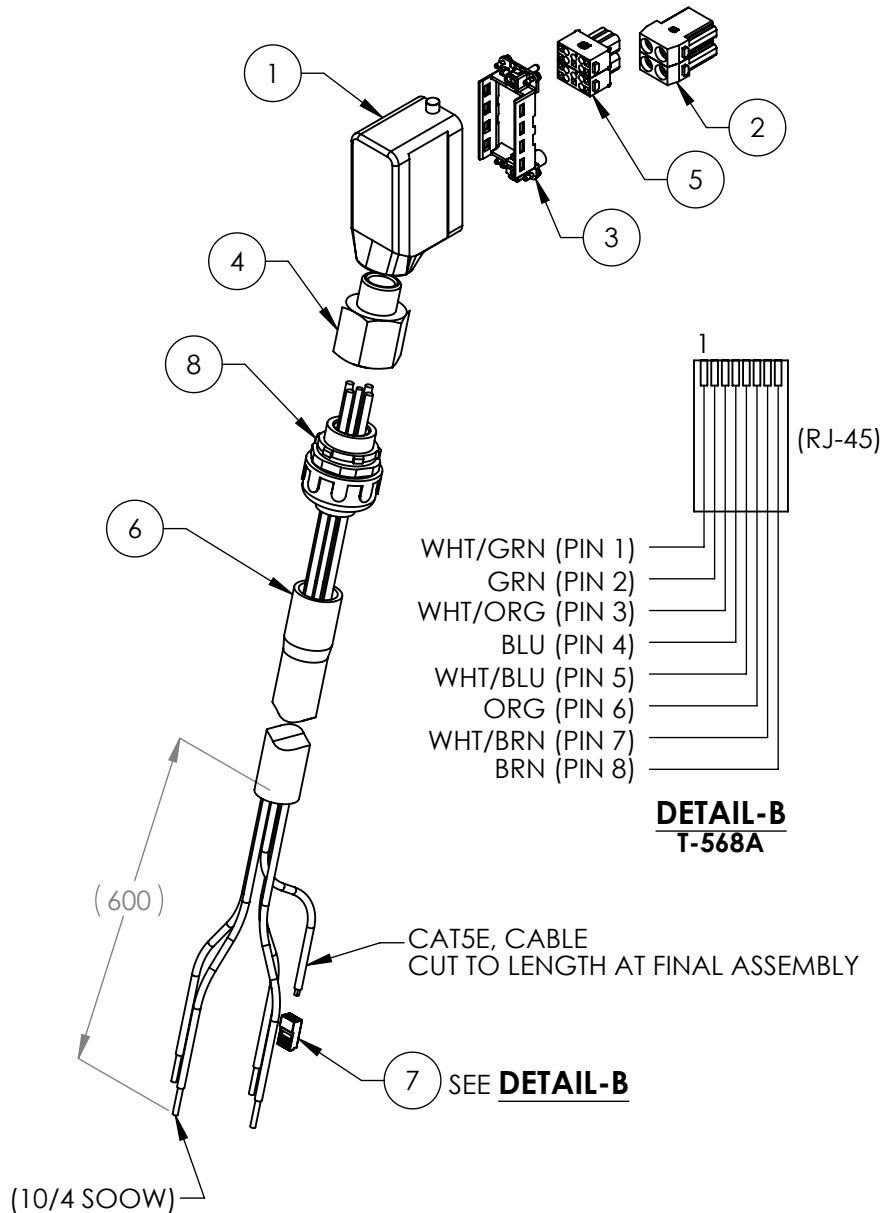
DO NOT SCALE DRAWING		NAME		DATE		 BendPak. 1645 LEMONWOOD DR. SANTA PAULA, CA 93060 <small>MOVING AUTOMATIC SERVICE SOLUTIONS</small>			
DRAWN		TM		07/14/2009					
CHECKED		CA		11/20/2015					
DIMENSIONS ARE IN MM		THIRD ANGLE PROJECTION				TITLE: PCL-18B PARTS BOX, PRIMARY COLUMN			
									
		PROPRIETARY AND CONFIDENTIAL THE INFORMATION CONTAINED IN THIS DRAWING IS THE SOLE PROPERTY OF BENDPAK INC. ANY REPRODUCTION IN PART OR AS A WHOLE WITHOUT THE WRITTEN PERMISSION OF BENDPAK INC. IS PROHIBITED.				SIZE DWG. NO.		REV	
						A 5250221		K	
						SCALE: 1:12		SHEET 1 OF 1	

NOTE: UNLESS OTHERWISE SPECIFIED.

1. SEE SHIPPING INSTRUCTIONS FOR FINAL PACKAGING

NEXT ASSEMBLY
5260130

REVISION		DATE	EDITED BY	ECO#
REV	DESCRIPTION			
A	PRODUCTION RELEASE	9/9/2015	JM	00720



ITEM NO.	PART NUMBER	DESCRIPTION	QTY.	REV
1	5520227	HAN 16B HOOD SIDE ENTRY 2 PEGS M25	1	-
2	5520217	HAN 40A AXIAL MODULE, MALE	2	-
3	5520216	HAN MODULAR FRAME 16 HOOD 4 MODULE A-D	1	-
4	5520465	1 TO 1-1/4 INCH ADAPTER	1	-
5	5520214	HAN ES MODULE, CAGE CLAMP FEMALE	2	-
6	5520453	10/4 SOOW/CAT5E COILD CUSTOM CABLE	30.5 METER	-
7	5520475	CAT 5 CRIMP	1	-
8	5520476	PCL-18B 3/4" LIQUID TIGHT CONNECTOR	1	-

DO NOT SCALE DRAWING

DIMENSIONS ARE IN MM



NAME	DATE
DRAWN JM	09/09/2015
CHECKED CA	09/23/2015

THIRD ANGLE PROJECTION



PROPRIETARY AND CONFIDENTIAL
THE INFORMATION CONTAINED IN THIS DRAWING IS THE SOLE PROPERTY OF BENDPAK INC. ANY REPRODUCTION IN PART OR AS A WHOLE WITHOUT THE WRITTEN PERMISSION OF BENDPAK INC. IS PROHIBITED.

BendPak 1645 LEMONWOOD DR.
SANTA PAULA, CA 93060

TITLE:
PCL-18B 10/4 SOOW/CAT5E
COILD CUSTOM CABLE ASSY.

SIZE DWG. NO. REV
A 5520016 A

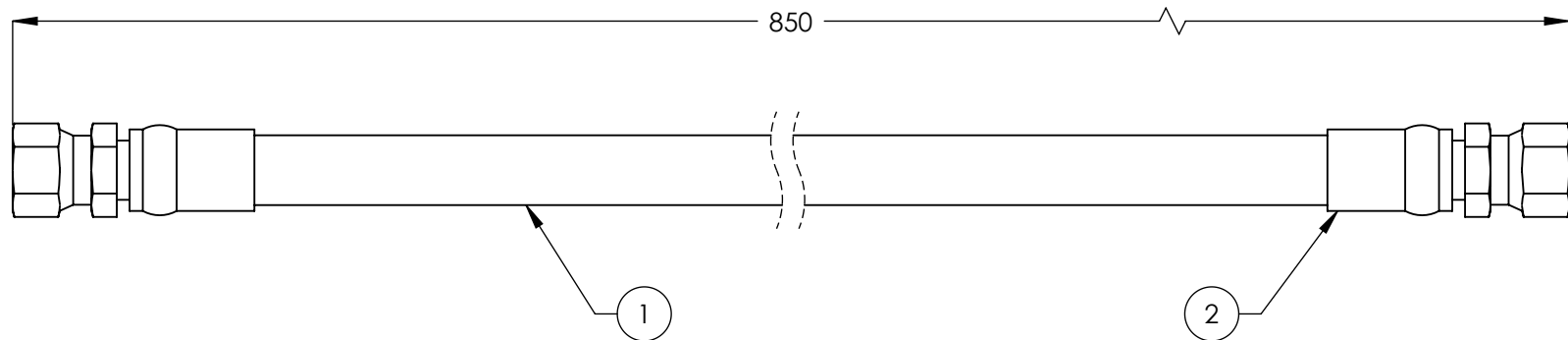
SCALE: 1:10 SHEET 1 OF 1

NOTE: UNLESS OTHERWISE SPECIFIED.


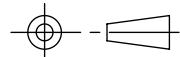
1. ASSEMBLE ITEMS AS SHOWN

NEXT ASSEMBLY
5260130
5260330
5260333

REVISION				
REV.	DESCRIPTION	DATE	EDITED BY	ECO #
A	PRODUCTION RELEASE	08/26/2009	AC	00136
B	PCL-18 WAS MCL-18	09/29/2009	MT	00303
C	UPDATED TITLE TO REFLECT WHERE USED	08/24/2015	JM	00720



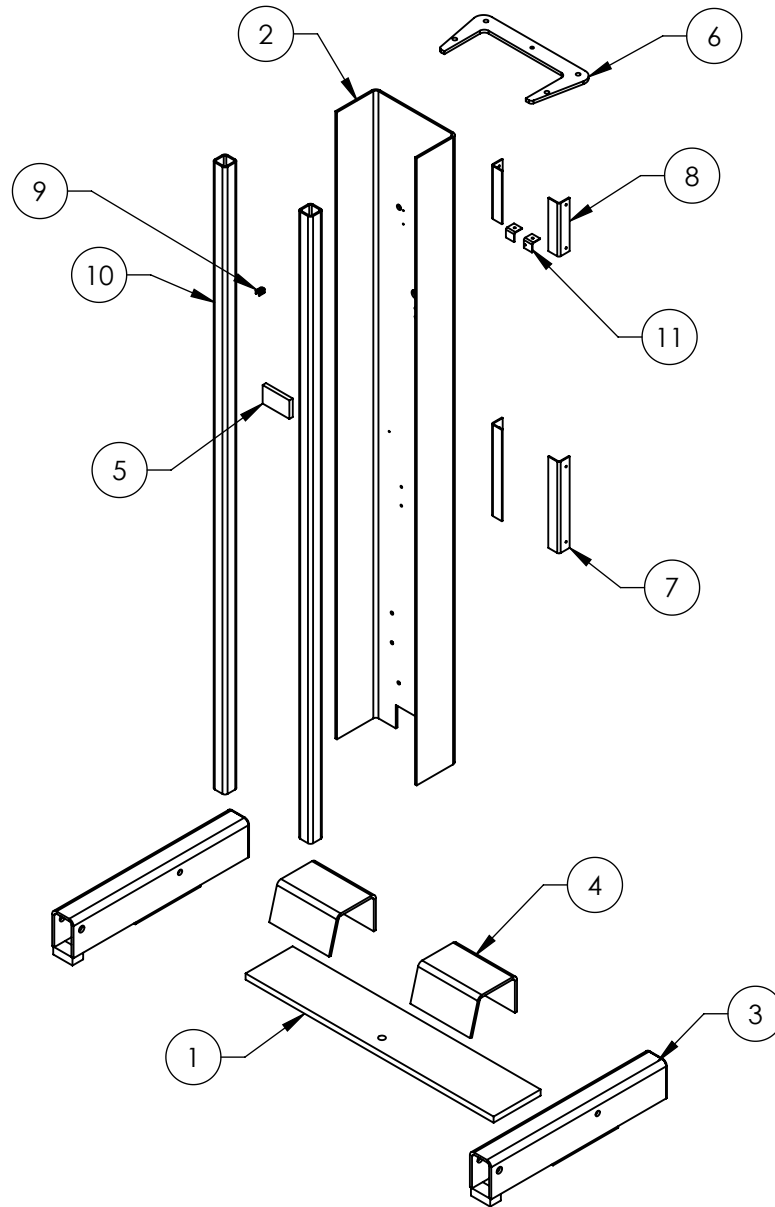
ITEM NO	PART NUMBER	DESCRIPTION	QTY.	REV
1	5570116	Ø10 ID HYDRAULIC HOSE	818*mm	-
2	5550336	FTG NPL -06 CRIMP x -06 JIC	2	-

DO NOT SCALE DRAWING		NAME	DATE	<div> BendPak. 1645 LEMONWOOD DR. SANTA PAULA, CA 93060</div> <div>PROVIDING AUTOMATIC SERVICE EQUIPMENT</div>		
DIMENSIONS ARE IN MM TOLERANCES: 0. = ±1.5 0.0 = ±1.0 0.00 = ±0.25 0.000 = ±0.13 ANGULAR: MACH ±2° SURFACE FINISH 1.6 ISO Ra µm FOR MACHINED SURFACES UNLESS OTHERWISE SPECIFIED		DRAWN	AC			08/26/2009
		CHECKED	CA			09/24/2015
		THIRD ANGLE PROJECTION			TITLE: PCL-18B HYD. HOSE ASSY Ø10 x 850mm DS	
						
		PROPRIETARY AND CONFIDENTIAL THE INFORMATION CONTAINED IN THIS DRAWING IS THE SOLE PROPERTY OF BENDPAK INC. ANY REPRODUCTION IN PART OR AS A WHOLE WITHOUT THE WRITTEN PERMISSION OF BENDPAK INC. IS PROHIBITED.			SIZE	DWG. NO.
			A		5570872	C
			SCALE: 1:2			SHEET 1 OF 1

NOTE: UNLESS OTHERWISE SPECIFIED.

- FOR ITEM 1 SPECIFICATIONS REFER TO PART SPECIFICATION FORM
- (*)ITEM 1 QTY FOR REFERENCE ONLY

NEXT ASSEMBLY
5250221

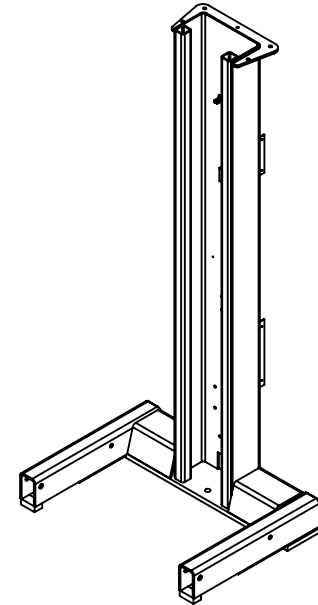


NOTE: UNLESS OTHERWISE SPECIFIED.

1. BREAK AND DEBURR ALL SHARP EDGES 0.3mm
2. REMOVE ALL WELD SPLATTER
3. PAINT BENDPAK BLUE
4. DRILL AFTER WELD


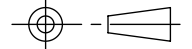
NEXT ASSEMBLY
5215014

REVISION				
REV	DESCRIPTION	DATE	EDITED BY	ECO#
H	REPLACED 5736626 WITH 5736916	04/21/2015	MR	00702
J	UPDATED TITLE TO REFLECT WHERE USED, UPDATED BOM REVISIONS	08/21/2015	JM	00720
K	5701396 DISTANCE WAS 1756 NOW 1766 pg 2	09/14/2016	DB	00774

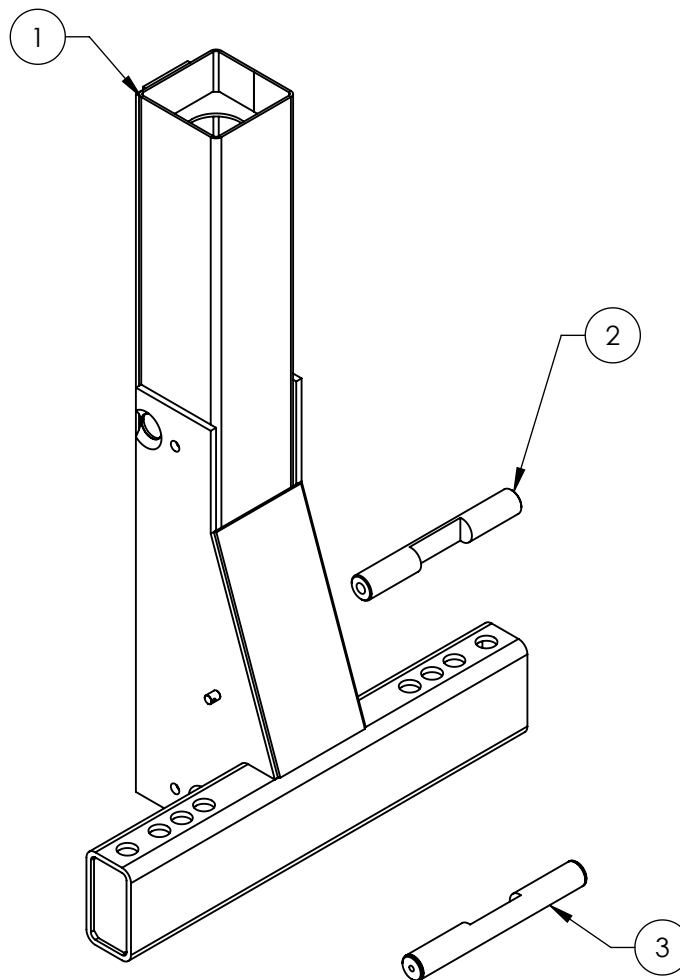


**ISOMETRIC VIEW
FOR REFERENCE ONLY
DO NOT SCALE**

ITEM NO	PART NUMBER	DESCRIPTION	QTY	REV
1	5731621	PCL-18B BASE PLATE	1	C
2	5701458	PCL-18B BASE POST	1	F
3	5620033	PCL-18B LEG WELDMENT	2	D
4	5765415	PCL-18B SUPPORT BRACKET	2	C
5	5736643	PCL-18B SAFETY SUPPORT	1	C
6	5736916	PCL-18B SHIPPING ANGLE POST TOP BRACE	1	B
7	5721368	PCL-18B PUMP COVER BRACKET	2	C
8	5721098	PCL-18B SENSOR COVER BRACKET	2	C
9	5210004	GP/PCL/XPR SAFETY SHEAVE CLAMP	1	C
10	5765100	PCL-18B POST RAIL	2	C
11	5701396	PCL-18B SOLENOID MOUNT BRACKET	2	B

DO NOT SCALE DRAWING		NAME	DATE	 BendPak. 1645 LEMONWOOD DR. SANTA PAULA, CA 93060 <small>PROVIDING AUTOMATIC SERVICE SOLUTIONS</small>		
DIMENSIONS ARE IN MM TOLERANCES: 0. = ±1.5 0.0 = ±0.5 ANGULAR: 0. = ±2° SURFACE FINISH 1.6 ISO Ra µm FOR MACHINED SURFACES UNLESS OTHERWISE SPECIFIED		DRAWN	GJZ			11/08/2007
		CHECKED	DB			09/14/2016
		THIRD ANGLE PROJECTION		TITLE: PCL-18B POST WELDMENT		
						
		PROPRIETARY AND CONFIDENTIAL THE INFORMATION CONTAINED IN THIS DRAWING IS THE SOLE PROPERTY OF BENDPAK INC. ANY REPRODUCTION IN PART OR AS A WHOLE WITHOUT THE WRITTEN PERMISSION OF BENDPAK INC. IS PROHIBITED.		SIZE	DWG. NO.	REV
				A	5600446	K
		SCALE: 1:25			SHEET 1 OF 3	

REVISION				
REV	DESCRIPTION	DATE	EDITED BY	ECO#
F	UPDATED BOM REVISION	02/17/2015	MR	00651
G	UPDATED BOM REVISIONS	03/19/2015	TM	00693
H	UPDATED TITLE TO REFLECT WHERE USED, WAS BENDPAK GRAY NOW BENDPAK BLUE, UPDATED BOM REVISIONS	08/21/2015	JM	00720


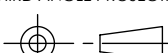


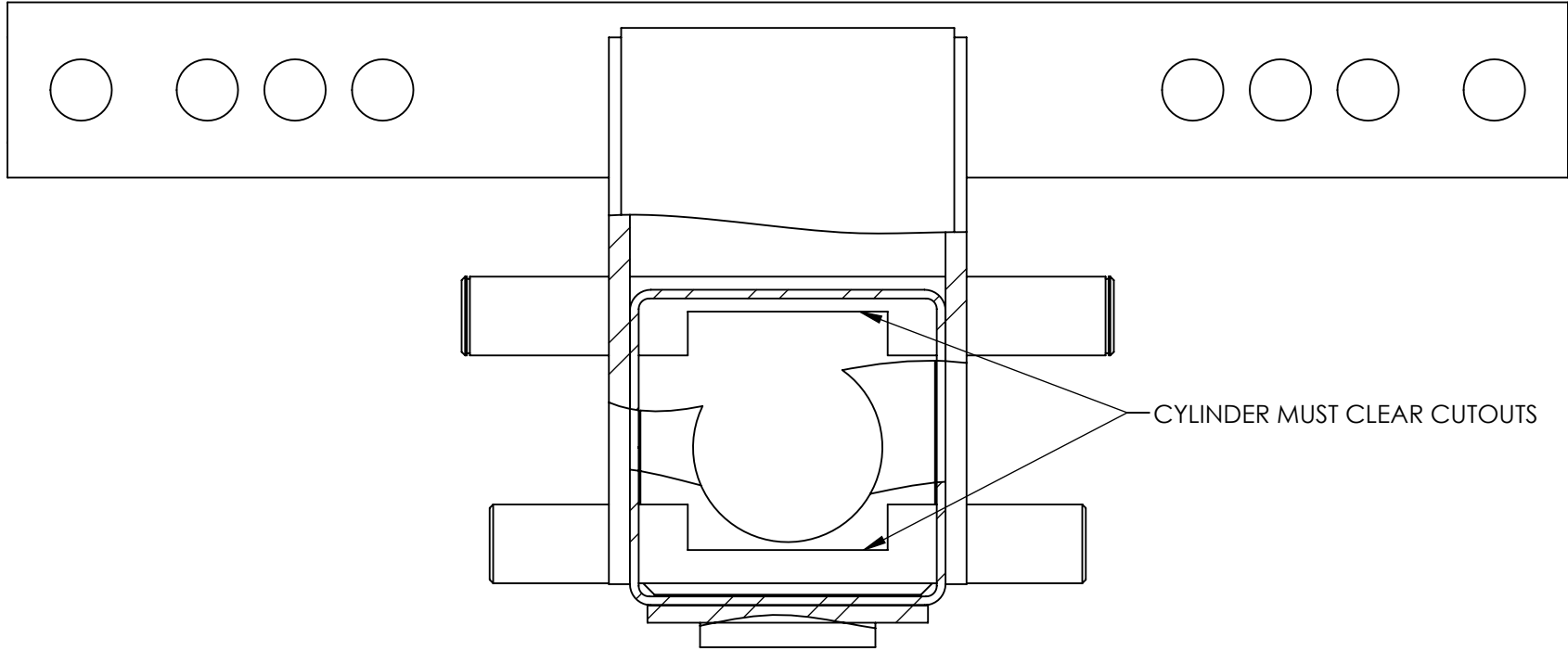
NOTE: UNLESS OTHERWISE SPECIFIED.


1. BREAK AND DEBURR ALL SHARP EDGES 0.3mm
2. REMOVE ALL WELD SPLATTER
3. DIMENSIONS SHOWN ARE AFTER PAINTING
4. MASK THREADS BEFORE PAINTING
5. PAINT BENDPAK BLUE
CARDINAL #: T008-GR736

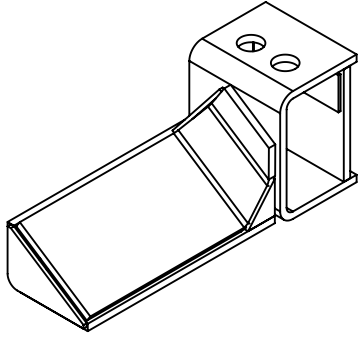
NEXT ASSEMBLY
5215034

ITEM NO	PART NUMBER	DESCRIPTION		QTY	REV
1	5620030	PCL-18B CARRIAGE SUBWELDMENT		1	F
2	5745018	PCL-18B CARRIAGE TOP SHAFT		1	E
3	5745016	PCL-18B CARRIAGE BOTTOM SHAFT		1	F

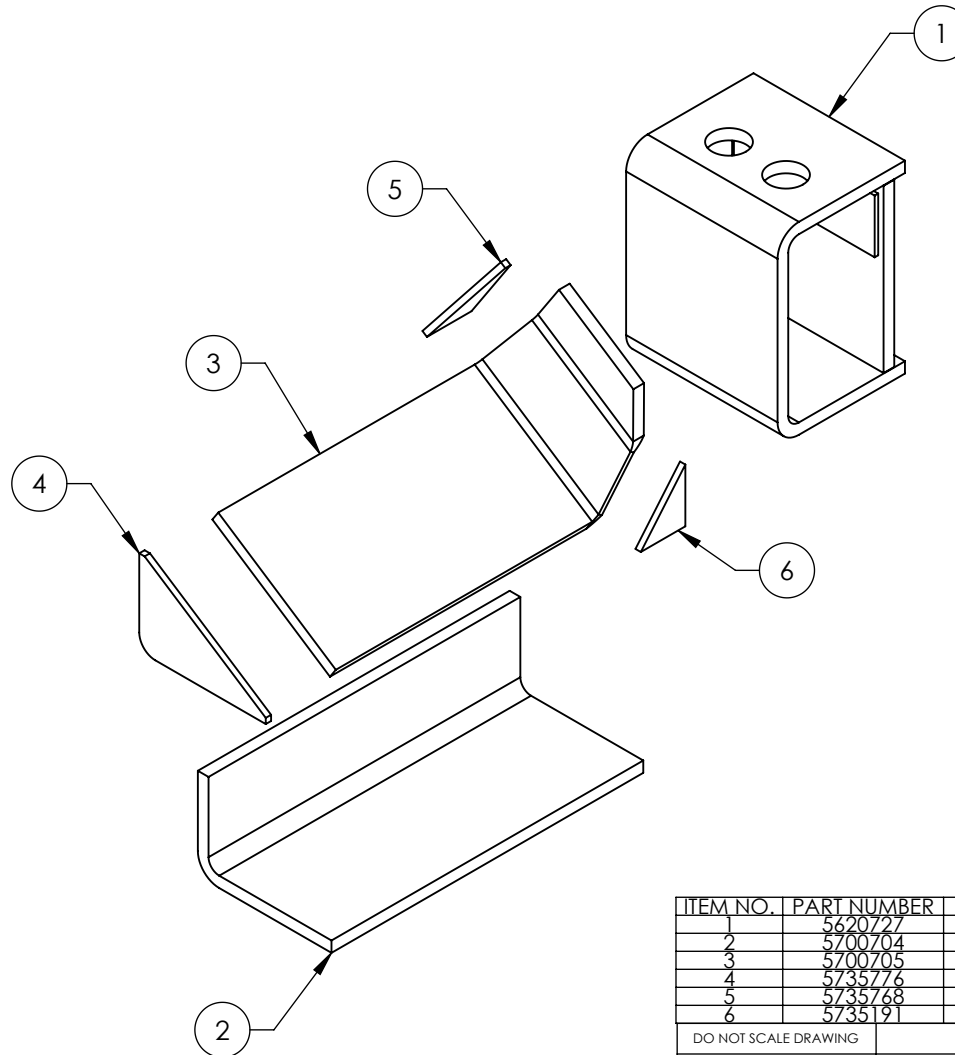
DO NOT SCALE DRAWING		NAME	DATE	 1645 LEMONWOOD DR. SANTA PAULA, CA 93060	
DRAWN		GJZ	11/13/2007		
CHECKED		CA	09/24/2015	TITLE: PCL-18B CARRIAGE WELDMENT	
DIMENSIONS ARE IN MM TOLERANCES: 0. = ±1.5 0.0 = ±0.5 ANGULAR: 0. = ±2° SURFACE FINISH 1.6 ISO Ra µm FOR MACHINED SURFACES UNLESS OTHERWISE SPECIFIED		THIRD ANGLE PROJECTION			
					
		PROPRIETARY AND CONFIDENTIAL THE INFORMATION CONTAINED IN THIS DRAWING IS THE SOLE PROPERTY OF BENDPAK INC. ANY REPRODUCTION IN PART OR AS A WHOLE WITHOUT THE WRITTEN PERMISSION OF BENDPAK INC. IS PROHIBITED.			
SIZE		DWG. NO.		REV	
		A 5600448		H	
SCALE: 1:12				SHEET 1 OF 3	



 BendPak. <small>PROVIDING AUTOMATIC SERVICE SOLUTIONS</small>		1645 LEMONWOOD DR. SANTA PAULA, CA 93060	
TITLE: PCL-18B CARRIAGE WELDMENT			
SIZE	DWG. NO.		REV
A	5600448		H
SCALE: 1:4			SHEET 3 OF 3



ISOMETRIC VIEW
FOR REFERENCE ONLY
DO NOT SCALE




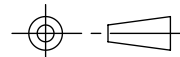
NOTE: UNLESS OTHERWISE SPECIFIED.

1. BREAK AND DEBURR ALL SHARP EDGES 0.3mm
 2. REMOVE ALL WELD SPLATTER
 3. DIMENSIONS SHOWN ARE AFTER PAINTING
 4. PAINT BENDPAK YELLOW
- CARDINAL #: T008-GR736

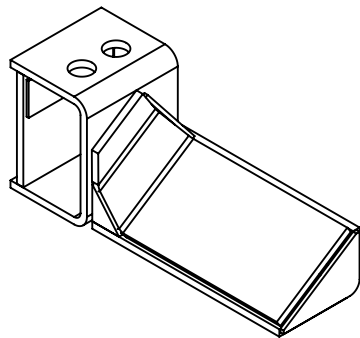
NEXT ASSEMBLY
5215034

REVISION				
REV	DESCRIPTION	DATE	EDITED BY	ECO#
A	PRODUCTION RELEASE DERIVED FROM 5600447	03/13/2015	MR	00651
B	UPDATED TITLE TO REFLECT WHERE USED, WAS BENDPAK GRAY NOW BENDPAK YELLOW, UPDATED BOM REVISIONS	08/21/2015	JM	00720

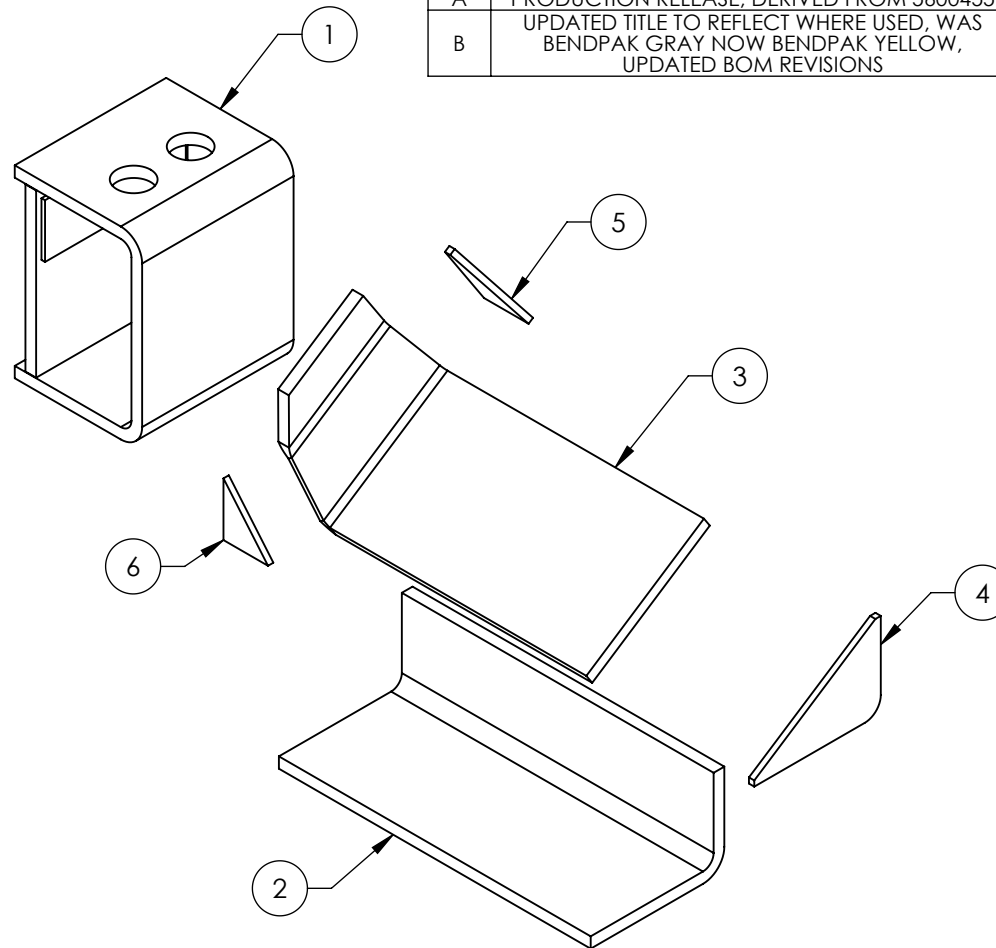
ITEM NO.	PART NUMBER	DESCRIPTION	QTY.	REV
1	5620727	PCL-18B ARM BASE WELDMENT	1	B
2	5700704	PCL-18B FORK ARM	1	C
3	5700705	PCL-18B RIGHT FORK ARM PLATE	1	C
4	5735776	PCL-18B FORK ARM END PLATE	1	C
5	5735768	PCL-18B FORK ARM GUSSET	1	C
6	5735191	PCL-18B FORK ARM CLOSEOUT	1	C

DO NOT SCALE DRAWING		NAME	DATE	<div> BendPak. MOVING AUTOMOTIVE SERVICE EQUIPMENT</div> <div>1645 LEMONWOOD DR. SANTA PAULA, CA 93060</div>	
DIMENSIONS ARE IN MM TOLERANCES: 0. = ±1.5 0.0 = ±0.5		DRAWN	GJZ 11/12/2007		
		CHECKED	CA 09/24/2015		
ANGULAR: 0. = ±2°		THIRD ANGLE PROJECTION		TITLE: PCL-18B RIGHT FORK ARM WELDMENT	
					
SURFACE FINISH 1.6 ISO Ra µm FOR MACHINED SURFACES UNLESS OTHERWISE SPECIFIED		<p>PROPRIETARY AND CONFIDENTIAL</p> <p>THE INFORMATION CONTAINED IN THIS DRAWING IS THE SOLE PROPERTY OF BENDPAK INC. ANY REPRODUCTION IN PART OR AS A WHOLE WITHOUT THE WRITTEN PERMISSION OF BENDPAK INC. IS PROHIBITED.</p>		SIZE DWG. NO.	REV
				A 5600884	B
SCALE: 1:6				SHEET 1 OF 2	

REVISION				
REV	DESCRIPTION	DATE	EDITED BY	ECO#
A	PRODUCTION RELEASE, DERIVED FROM 5600455	03/09/2015	MR	00651
B	UPDATED TITLE TO REFLECT WHERE USED, WAS BENDPAK GRAY NOW BENDPAK YELLOW, UPDATED BOM REVISIONS	08/21/2015	JM	00720



ISOMETRIC VIEW
FOR REFERENCE ONLY
DO NOT SCALE



NOTE: UNLESS OTHERWISE SPECIFIED.

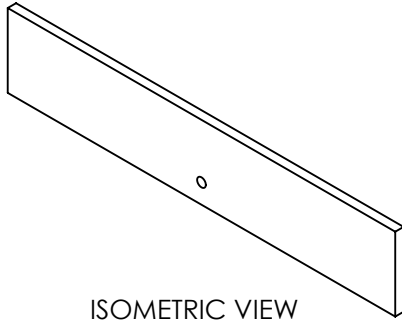
1. BREAK AND DEBURR ALL SHARP EDGES 0.3mm
 2. REMOVE ALL WELD SPLATTER
 3. DIMENSIONS SHOWN ARE AFTER PAINTING
 4. ARMS MUST SLIDE FREELY ON CARRIAGE BEAM
 5. PAINT BENDPAK YELLOW
- CARDINAL #: T008-GR736

ITEM NO	PART NUMBER	DESCRIPTION	QTY	REV
1	5620727	PCL-18B ARM BASE WELDMENT	1	B
2	5700704	PCL-18B FORK ARM	1	C
3	5700715	PCL-18B LEFT FORK ARM PLATE	1	C
4	5735776	PCL-18B FORK ARM END PLATE	1	C
5	5735768	PCL-18B FORK ARM GUSSET	1	C
6	5735191	PCL-18B FORK ARM CLOSEOUT	1	C

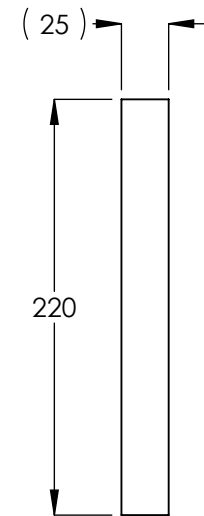
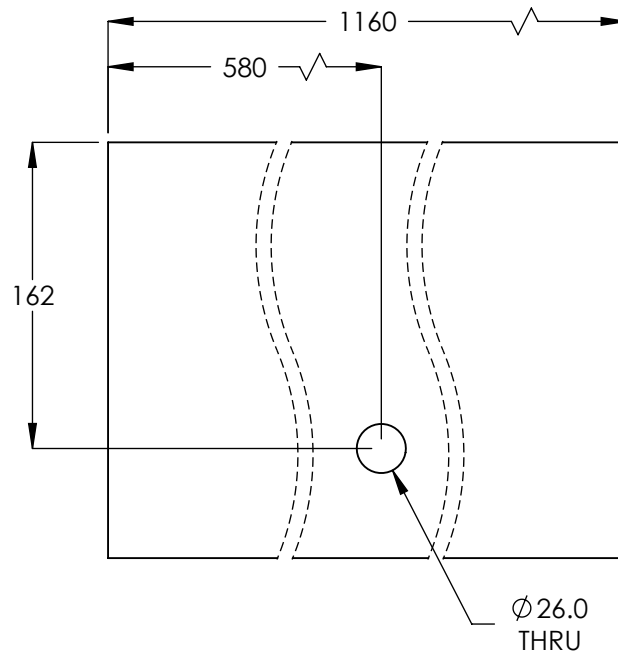
DO NOT SCALE DRAWING		NAME	DATE
DIMENSIONS ARE IN MM TOLERANCES: 0. = ± 1.5 0.0 = ± 0.5 ANGULAR: 0. = $\pm 2^\circ$ SURFACE FINISH 1.6 ISO Ra μ m FOR MACHINED SURFACES UNLESS OTHERWISE SPECIFIED		DRAWN	GJZ 11/12/2007
		CHECKED	CA 09/24/2015
THIRD ANGLE PROJECTION 		BendPak. 1645 LEMONWOOD DR. SANTA PAULA, CA 93060	
		TITLE: PCL-18B LEFT FORK ARM WELDMENT	
A		SIZE DWG. NO. 5600885	REV B
SCALE: 1:6			SHEET 1 OF 2

NEXT ASSEMBLY
5215034

PROPRIETARY AND CONFIDENTIAL
THE INFORMATION CONTAINED IN THIS DRAWING IS
THE SOLE PROPERTY OF BENDPAK INC. ANY
REPRODUCTION IN PART OR AS A WHOLE WITHOUT
THE WRITTEN PERMISSION OF BENDPAK INC. IS
PROHIBITED.



ISOMETRIC VIEW
FOR REFERENCE ONLY
DO NOT SCALE


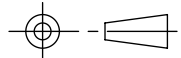


REVISION				
REV	DESCRIPTION	DATE	EDITED BY	ECO#
A	PRODUCTION RELEASE	11/06/2007	GJZ	00136
B	PCL-18 WAS MCL-18	09/28/2009	MT	00303
C	UPDATED TITLE TO REFLECT WHERE USED	8/21/2015	JM	00720

NOTE: UNLESS OTHERWISE SPECIFIED.

- BREAK AND DEBURR ALL SHARP EDGES 0.3mm
- MATERIAL:** HR ASTM A36 OR Q235 GB/T 700

NEXT ASSEMBLY
5600446

DO NOT SCALE DRAWING		NAME	DATE	 BendPak 1645 LEMONWOOD DR. SANTA PAULA, CA 93060 <small>POWERING AUTOMATIC SERVICE SOLUTIONS</small>	
DIMENSIONS ARE IN MM TOLERANCES: 0. = ±1.5 0.0 = ±0.5 ANGULAR: 0. = ±2° SURFACE FINISH 1.6 ISO Ra µm FOR MACHINED SURFACES UNLESS OTHERWISE SPECIFIED		DRAWN	GJZ 11/06/2007		
		CHECKED	CA 09/25/2015		
THIRD ANGLE PROJECTION 		TITLE:		PCL-18B BASE PLATE	
		SIZE DWG. NO.		REV	
PROPRIETARY AND CONFIDENTIAL THE INFORMATION CONTAINED IN THIS DRAWING IS THE SOLE PROPERTY OF BENDPAK INC. ANY REPRODUCTION IN PART OR AS A WHOLE WITHOUT THE WRITTEN PERMISSION OF BENDPAK INC. IS PROHIBITED.		A		5731621	
		SCALE: 1:4		SHEET 1 OF 1	

PART SPECIFICATION FORM

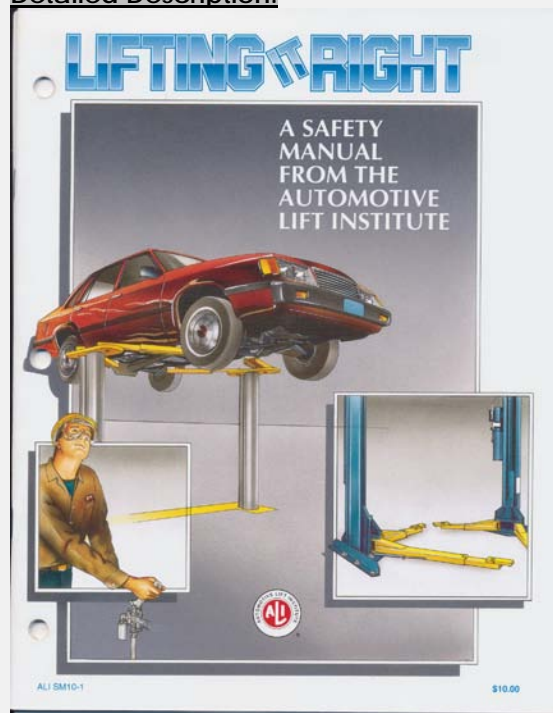
BENDPAK Number:	5900147
MRP Description:	SAFETY MANUAL ALI / SM 93-1
Date:	12/28/2010
ECO :	00431

1. Engineering Specification

Application:

ALI SAFETY MANUAL

Detailed Description:



2. Vendor Information

Approved Vendor	Vendor Part #	Contact #	Preferred Vendor
1)			

PART SPECIFICATION FORM

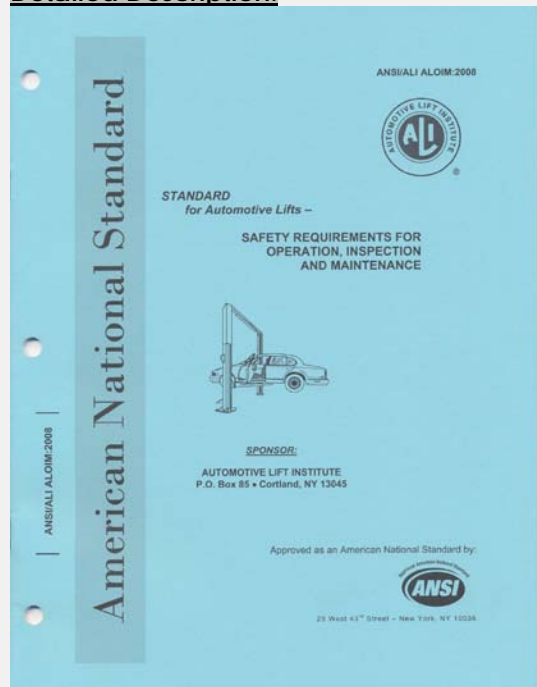
BENDPAK Number:	5900152
MRP Description:	ALIGN OIM OPERATION INSPECTION & MAINTENANCE
Date:	12/28/2010
ECO :	00431

1. Engineering Specification

Application:

ALI OPERATION INSPECTION & MAINTENANCE MANUAL

Detailed Description:



2. Vendor Information

Approved Vendor	Vendor Part #	Contact #	Preferred Vendor
1)			

PART SPECIFICATION FORM

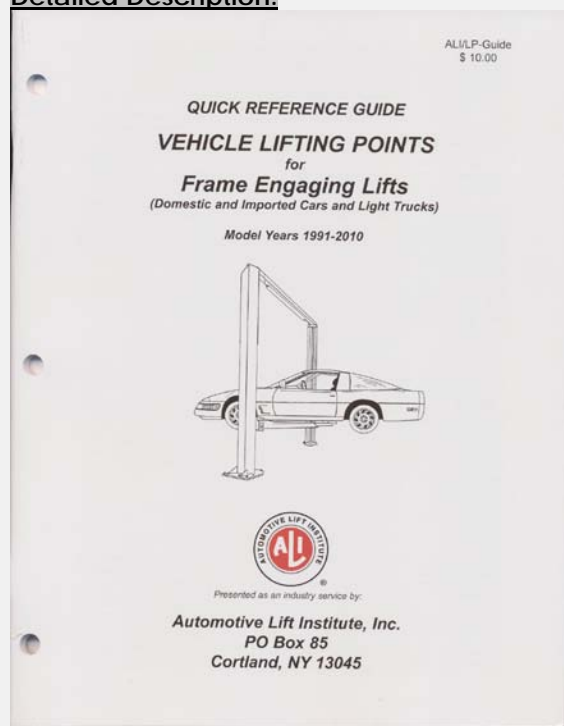
BENDPAK Number:	5900280
MRP Description:	ALI/LP FRAME ENGAGING LIFTS GUIDE
Date:	12/28/2010
ECO :	00431

1. Engineering Specification

Application:

ALI LIFTING GUIDE

Detailed Description:



2. Vendor Information

Approved Vendor	Vendor Part #	Contact #	Preferred Vendor
1)			

PART SPECIFICATION FORM

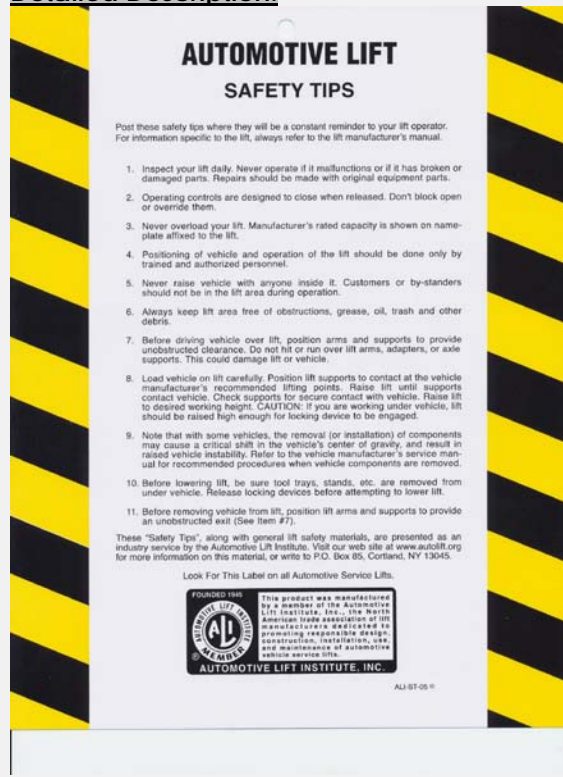
BENDPAK Number:	5905151
MRP Description:	SAFETY TIPS CARD ALI-ST 90
Date:	12/28/2010
ECO :	00431

1. Engineering Specification

Application:

ALI SAFETY TIPS

Detailed Description:



2. Vendor Information

Approved Vendor	Vendor Part #	Contact #	Preferred Vendor
1)			

PART SPECIFICATION FORM

BENDPAK Number:	5905234
MRP Description:	WRAP-ON WIRE MARKER
Date:	09/29/2015
ECO :	00720

1. Engineering Specification

Application:

WIRE MARKER

Detailed Description:

Adhesive-back markers wrap onto themselves to accommodate wires of various thicknesses.

Markers are oil- and water-resistant. They have continuously printed black characters on a white background.

Markers are 0.007" thick vinyl cloth and 1 1/2" long. The width varies depending on character.

*** Specify Individual Characters when ordering. (0-100, A-Z, -, +,)

2. Vendor Information (Or for Reference)

Approved Vendor	Vendor Part #	Contact #	Preferred Vendor
1) McMaster-Carr	24795T1		
2)			
OR BENDPAK ENGINEERING APPROVED EQUIVALENT			

PART SPECIFICATION FORM

BENDPAK Number:	5905311
MRP Description:	BENDPAK LABEL; 4 x 38" WHITE INK
Date:	05/13/2015
ECO :	00689

1. Engineering Specification

Application:

BENDPAK LABEL

Detailed Description:



SIZE: 38" L x 4.25" W (965mm x 108mm)

- Material: Yellow Represents Clear Adhesive PET
- Size: 4.25"W x 38"H
- Thickness: 4 Mil
- Finish: Polished
- Ink: U.V. protected, Opaque White
- Print Process: Silk Screen, 85 line-screen (Opaque White ink, clear adhesive PET will fill in blank areas.)
- Lamination: Clear-gloss over-laminate for abrasion, chemical, and ultra violet protection

2. Vendor Information

Approved Vendor	Vendor Part #	Contact #	Preferred Vendor
1)			

B

E

N

D

P

A

K

BendPak

ABOVE-GROUND LIFTS



BendPak®
PROVIDING AUTOMOTIVE SERVICE SOLUTIONS



1645 Lemonwood Drive
Santa Paula, CA 93060
U.S.A.
(805) 933-9970
www.bendpak.com

P/N 5905311

PART SPECIFICATION FORM

BENDPAK Number:	5905475
MRP Description:	PCL-18B_Column_Indicator_A
Date:	08/25/2016
ECO :	ECO-00774

1. Engineering Specification

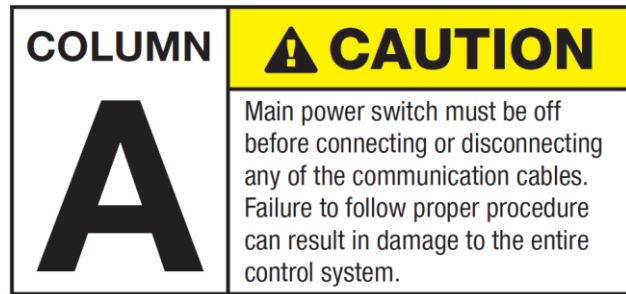
Application:

COLUMN INDICATOR

Detailed Description:

Trim: 4"W x 2"H

Material: 2 Mil. White Adhesive Vinyl
 Ink: U.V. protected CMYK 4/C Process
 Finish: Polished
 Print Process: Offset Lithography - 200
 line-screen or 300 p.p.i. for digital
 Lamination: Clear-gloss over-laminate
 for abrasion, chemical, and ultra violet
 protection



PN 5905475

2. Vendor Information (Or for Reference)

Approved Vendor	Vendor Part #	Contact #	Preferred Vendor
1)			
2)			
OR BENDPAK ENGINEERING APPROVED EQUIVALENT			

PART SPECIFICATION FORM

BENDPAK Number:	5905580
MRP Description:	PCL-18 ALI SAFETY LABEL KIT
Date:	11/02/2011
ECO :	00484

1. Engineering Specification

Application:

ALI LIFT STICKER KIT

Detailed Description:



2. Vendor Information

Approved Vendor	Vendor Part #	Contact #	Preferred Vendor
1)			

PART SPECIFICATION FORM

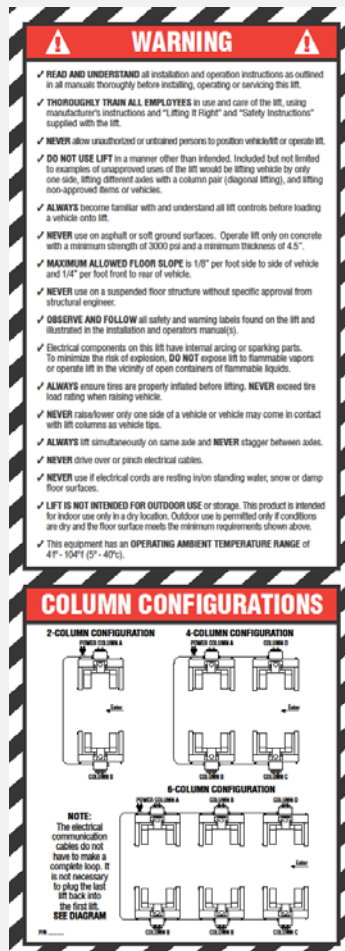
BENDPAK Number:	5905615
MRP Description:	PCL-18 WARNING LABEL
Date:	11/09/2012
ECO :	00550

1. Engineering Specification

Application:

WARNING LABEL

Detailed Description:



2. Vendor Information

Approved Vendor	Vendor Part #	Contact #	Preferred Vendor
1)			

PART SPECIFICATION FORM

BENDPAK Number:	5905620
MRP Description:	PCL-18 INSTRUCTIONS LABEL
Date:	11/09/2012
ECO :	00550

1. Engineering Specification

Application:

INSTRUCTIONS LABEL

Detailed Description:

WARNING	QUICK-START OPERATION INSTRUCTIONS
<ul style="list-style-type: none"> Be sure to observe and follow all safety and warning instructions found on the lift, illustrated on the labels and in the installation and operators manual(s). Before attempting to lift any vehicle, be sure that vehicle individual axle weight does not exceed two lift columns combined capacity and adequate overhead clearance is provided to raise vehicle to desired height. Make sure lift forks are in secure contact with vehicle tires and parking brake is released on vehicle. Adjustable forks must be equally spaced off centerline of lift carriage and adjusted properly to the tire/wheel size. Ensure tires are properly inflated before lifting. DO NOT exceed tire load rating when raising vehicle. NEVER go under raised vehicle unless all tires are making secure contact with the forks. Lower lift and repeat vehicle and/or lift spotting and loading procedure if necessary. <p style="text-align: center; font-weight: bold; margin-top: 20px;"> Failure to read, understand and follow these instructions may cause death or serious injury. Read and understand these instructions before using lift. </p>	<p>TO RAISE LIFT:</p> <ol style="list-style-type: none"> After ensuring that the system communication check is complete and the display panel is colored GREEN, press the UP button until all vehicle tires clear the floor. (NOTE: if any single column has an operation fault, the entire set of columns will fail to register and the display panel(s) will be colored RED). Stop and check for secure fork contact with tires at all columns. Continue to raise vehicle to the desired height. (NOTE: If top limit has been set, the lift will automatically stop rising at the desired limit setting). NOTE: While operating the lift, you will observe individual columns slowing down and/or speeding up at various intervals of travel. This is a normal operating characteristic of the system. Press the PARK button to lower lift onto the locking latches. While using lift, avoid excessive rocking of vehicle. <p>TO LOWER LIFT:</p> <ol style="list-style-type: none"> Before lowering lift, be sure to remove tool carts, safety stands, etc. from the area and check that all personnel and bystanders remain clear. After ensuring that the system communication check is complete and the display panel is colored GREEN, press the DOWN button to lower lift. NOTE: The RABBIT (🐰) or TURTLE (🐢) settings can be used to control the lowering speed if desired. Observe that all columns are lowering and vehicle remains level. Remain clear of forks and vehicle when lowering. Observe pinch point WARNING decals. Reset the parking brake. Move all lift units away from the vehicle to provide an unobstructed exit before removing the vehicle. NEVER drive vehicle over communication cables. <p style="text-align: right; font-size: small;">PIN</p>

2. Vendor Information

Approved Vendor	Vendor Part #	Contact #	Preferred Vendor
1)			

PART SPECIFICATION FORM

BENDPAK Number:	5905621
MRP Description:	PCL-18B CALIBRATION LABEL
Date:	10/28/2015
ECO :	00737

1. Engineering Specification

Application:

PROCEDURE LABEL

Detailed Description:

Trim: 5"W x 3.25"H

Material: 2 Mil. White Adhesive Vinyl

Ink: U.V. protected CMYK 4/C Process

Finish: Polished

Print Process: Offset Lithography - 200 line-screen or 300 p.p.i. for digital

Lamination: Clear-gloss over-laminate for abrasion, chemical, and ultra violet protection

⚠ ATTENTION - PLEASE READ ⚠

This machine incorporates a variety of sensors and a high degree of function interaction. For safety and proper machine operation, this calibration procedure should be repeated bi-weekly and/or for any control module replacement, system calibration related fault, removal or replacement of any sensors, valves, coils, motors, or pumps.

LEVELING SYSTEM CALIBRATION PROCEDURE

1. Make sure the lifting carriages in each column are lowered completely and resting at ground level.
2. Press and hold calibration button for (5) five seconds. Calibration completed.

IMPORTANT NOTE:

NEVER calibrate lift while columns are in an elevated position. If an operation does not function as described or a condition is not met, follow the procedures as outline in your installation and operation manual, refer to above to correct the problem, or contact a BendPak representative at 1-805-933-9970.

PN 5905621

2. Vendor Information

Approved Vendor	Vendor Part #	Contact #	Preferred Vendor
1)			

⚠ ATTENTION - PLEASE READ ⚠

This machine incorporates a variety of sensors and a high degree of function interaction. For safety and proper machine operation, this calibration procedure should be repeated bi-weekly and/or for any control module replacement, system calibration related fault, removal or replacement of any sensors, valves, coils, motors, or pumps.

LEVELING SYSTEM CALIBRATION PROCEDURE

1. Make sure the lifting carriages in each column are lowered completely and resting at ground level.
2. Press and hold calibration button for (5) five seconds. Calibration completed.

IMPORTANT NOTE:

NEVER calibrate lift while columns are in an elevated position. If an operation does not function as described or a condition is not met, follow the procedures as outline in your installation and operation manual, refer to above to correct the problem, or contact a BendPak representative at 1-805-933-9970.

PART SPECIFICATION FORM

BENDPAK Number:	5905622
MRP Description:	PCL-18B CALIBRATION BUTTON LABEL
Date:	10/28/2015
ECO :	00737

1. Engineering Specification

Application:

LABEL

Detailed Description:

Trim: 1.5"W x 1.75"H

Material: 2 Mil. White Adhesive Vinyl

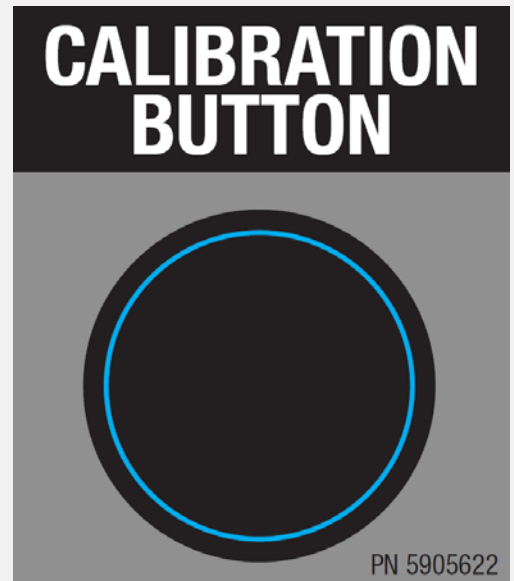
Ink: U.V. protected CMYK 4/C Process

Finish: Polished

Print Process: Offset Lithography – 200 line-screen or 300 p.p.i. for digital

Lamination: Clear-gloss over-laminate for abrasion, chemical, and ultra violet protection

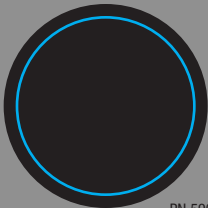
*INTERIOR LINE DOES NOT PRINT- For die cut only



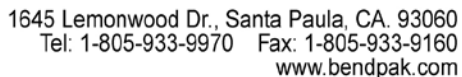
2. Vendor Information

Approved Vendor	Vendor Part #	Contact #	Preferred Vendor
1)			

CALIBRATION BUTTON



PN 5905622



BENDPAK Number:	5905635
MRP Description:	LABEL; PCL-18; CONTROL PANEL BUTTONS/PRIMARY
Date:	10/29/2015
ECO :	00737

[illegible]

OR BENDPAK ENGINEERING APPROVED EQUIVALENT

⚠️WARNING

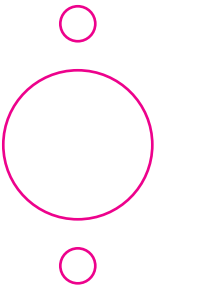
Failure to read, understand and follow these instructions may cause death or serious injury. Read and understand these instructions before using lift.

RAISING VEHICLE

- **START-UP:** Turn the main power switch located on the master column to the **ON** position. After (approximately six seconds) the green colored **RABBIT** button or the amber colored **TURTLE** button will illuminate signaling the user that all columns are initialized and ready. The system is now ready to operate.
- **RAISING ALL WHEELS:** In **TEAM** mode, press any **UP** button on any column to raise the lift. Keep **UP** button depressed until the vehicle is raised to the desired position. If necessary, use a second person to observe the area not seen by the operator. **NOTE:** While operating the lift, you will observe individual columns slowing down and/or speeding up at various intervals of travel. This is a normal operating characteristic of the system. Always press the **PARK/LOCK** button to lower lift onto the locking latches before entering work area.
- **RAISING PAIRED AXLE:** In **PAIR** mode, press the **UP** button on any **PAIRED** column to raise the desired axle. Keep **UP** button depressed until the vehicle axle is raised to the desired position. Always press the **PARK/LOCK** button to lower lift onto the locking latches before entering work area. **NOTE:** Be sure that the set of wheels on the ground is free to move as the effective distance between the front and rear wheels becomes less as one pair of wheels is higher or lower than the other pair. Keep the height difference between pairs as low as practical. Under **PAIR** mode, the lift will automatically result in an out-of-level fault if the axle or **PAIRED** column set is out of sync by more than 12” height difference between carriages.
- **RAISING SINGLE WHEEL:** **SINGLE** operation is to be used only to initially engage the tires and for slight equalization adjustments. An audible alarm will activate at all times during **SINGLE** mode use. To raise only a single wheel, turn the selector switch to **SINGLE** at the post that **SINGLE** control is desired. Press the **UP** button on any **PAIRED** column to raise the desired wheel. Always press the **PARK/LOCK** button to lower lift onto the locking latches before entering work area.
IMPORTANT NOTE: BE VERY CAREFUL WHEN DOING THIS OPERATION THAT THE VEHICLE REMAINS STABLE AND THAT THE SIDE OF THE VEHICLE DOES NOT COME IN CONTACT WITH THE COLUMN.

PARKING ON LOCKS / LOWERING VEHICLE

- **PARKING ALL WHEELS (ON MECHANICAL LOCKS):** The **PARK/LOCK** button default is set to lower all selected columns simultaneously onto the mechanical locks. The **PARK/LOCK** button will illuminate identifying that the select lift columns are now **PARK** ready. At this time, press the **PARK/LOCK** button to lower the lift onto the mechanical locks. Keep the **PARK/LOCK** button depressed until the **PARK /LOCK** button light remains off. If necessary, use a second person to observe the area not seen by the operator.
- **LOWERING LIFT:** Before lowering lift, be sure to remove tool carts, safety stands, etc. from the area and check that all personnel and bystanders remain clear. After ensuring that all columns are initialized and ready, press the **DOWN** button to lower lift. **IMPORTANT NOTE: IF THE PARK/LOCK BUTTON HAD BEEN PREVIOUSLY ACTIVATED, THE LIFT WILL AUTOMATICALLY RISE TWO INCHES BEFORE LOWERING COMMENCES.** Observe that all columns are lowering and vehicle remains level. Remain clear of forks and vehicle when lowering and observe all pinch points warnings. **NOTE:** The **RABBIT** (🐰) or **TURTLE** (🐢) settings can be used to control the lowering speed if desired. Once the vehicle tires have reached the ground, reset the parking brake then move all columns away from the vehicle to provide an unobstructed exit before removing the vehicle. **NEVER** drive vehicle over communication cables.
- **RESET OPERATION:** During operation, if there is a mechanical or electrical error, a system fault may occur which will cause the lift to stop working. The small fault light indicators on each control panel will help identify the cause. After carefully checking and correcting the fault cause, press the **RESET** button on any column and wait for the fault light indicators to turn off. The lift is then ready to continue operation. Refer to the operation manual for fault conditions, corrections and reset procedures.



Bendpak®
PROVIDING AUTOMOTIVE SERVICE SOLUTIONS



UP

DOWN

PARK / LOCK

TEAM

SINGLE

PAIR

MODE

SPEED

TURTLE

RABBIT

EMERGENCY
STOP

OFF

ON

FAULT / RESET

FAULT 1

Out of Tolerance

FAULT 2

No Motion

FAULT 3

Safety Release

FAULT 4

String Pot

PART SPECIFICATION FORM

BENDPAK Number:	5905675
MRP Description:	MAX CAP NRTL DANGER 18K
Date:	05/06/2013
ECO :	00593

1. Engineering Specification

Application:

LIFT CAPACITY STICKER FOR CE LIFTS

Detailed Description:



SIZE: 3.25" L x 4.5" W (82mm x 114mm)

2. Vendor Information

Approved Vendor	Vendor Part #	Contact #	Preferred Vendor
1)			

! ATTENTION !

MAXIMUM LIFTING CAPACITY

18000 Lbs.

8165 Kg.