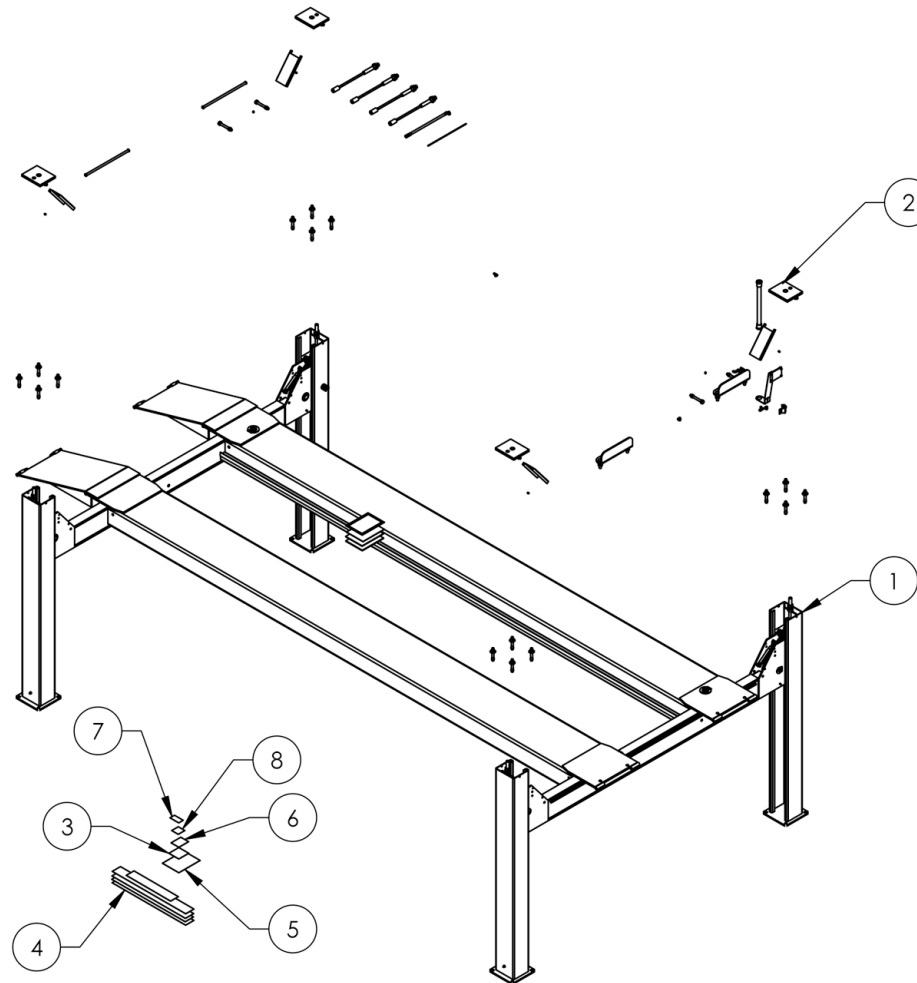


Service Manual

Service Parts & Diagrams

HDS-27

BendPak SKU 5260059
HDS-27 Four-Post Car Lift
Version C
06/02/2016



This guide is a troubleshooting reference used for maintaining and servicing your BendPak product. It provides comprehensive information on identifying serviceable parts and components and assists in troubleshooting problems and performing assembly/disassembly procedures.



BendPak, Inc. Corporate Office

1645 Lemonwood Drive
Santa Paula, CA 93060 USA
Toll Free US/Canada: 1-800-253-2363
Fax: 1-805-933-9160
info@bendpak.com

Customer Service Desk / Warranty

Customer Service Representatives
Office Tel: 1-805-933-9970
Toll Free US/Canada: 1-800-253-2363
Fax: 1-805-933-9160
customerservice@bendpak.com

Parts Orders

Customer Service Representatives
Office Tel: 1-805-933-9970
Toll Free US/Canada: 1-800-253-2363
Fax: 1-805-933-9160
parts@bendpak.com

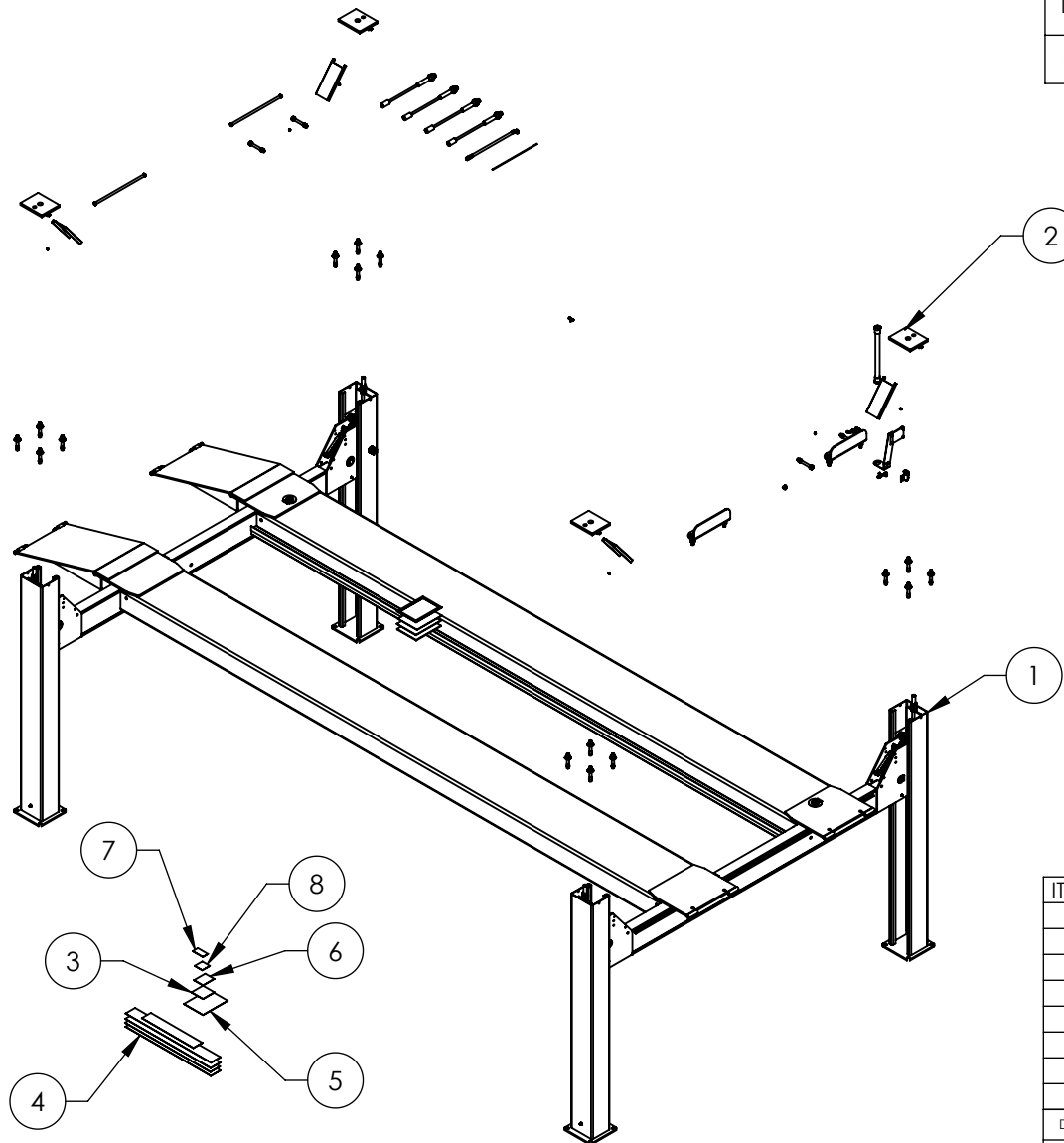
Domestic Sales & Service

USA Sales Representatives
Office Tel: 1-805-933-9970
Toll Free US/Canada: 1-800-253-2363
Fax: 1-805-933-9160
sales@bendpak.com

International Sales & Service

Office Tel: 1-805-933-9970
Exports Department: 1-805-933-9970 Ext. 192
Toll Free US/Canada: 1-800-253-2363
Fax: 1-805-933-9160
bpkexports@bendpak.com



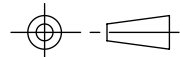
| | | REVISION | | |
|-----|---|------------|-----------|-------|
| REV | DESCRIPTION | DATE | EDITED BY | ECO# |
| C | ADDED 5905103, 5905200, 5905407, 5905465, 5905940, AND 5930605 | 08/04/2015 | TM | 00683 |
| D | REPLACED 5930605 WITH 5905953, REPLACED 5905407 WITH 5905402 UPDATED BOM REVISIONS | 12/10/2015 | JM | 00724 |
| E | 5905402 REPLACED BY 5905407, UPDATED BOM REVISIONS | 12/28/2015 | JM | 00741 |

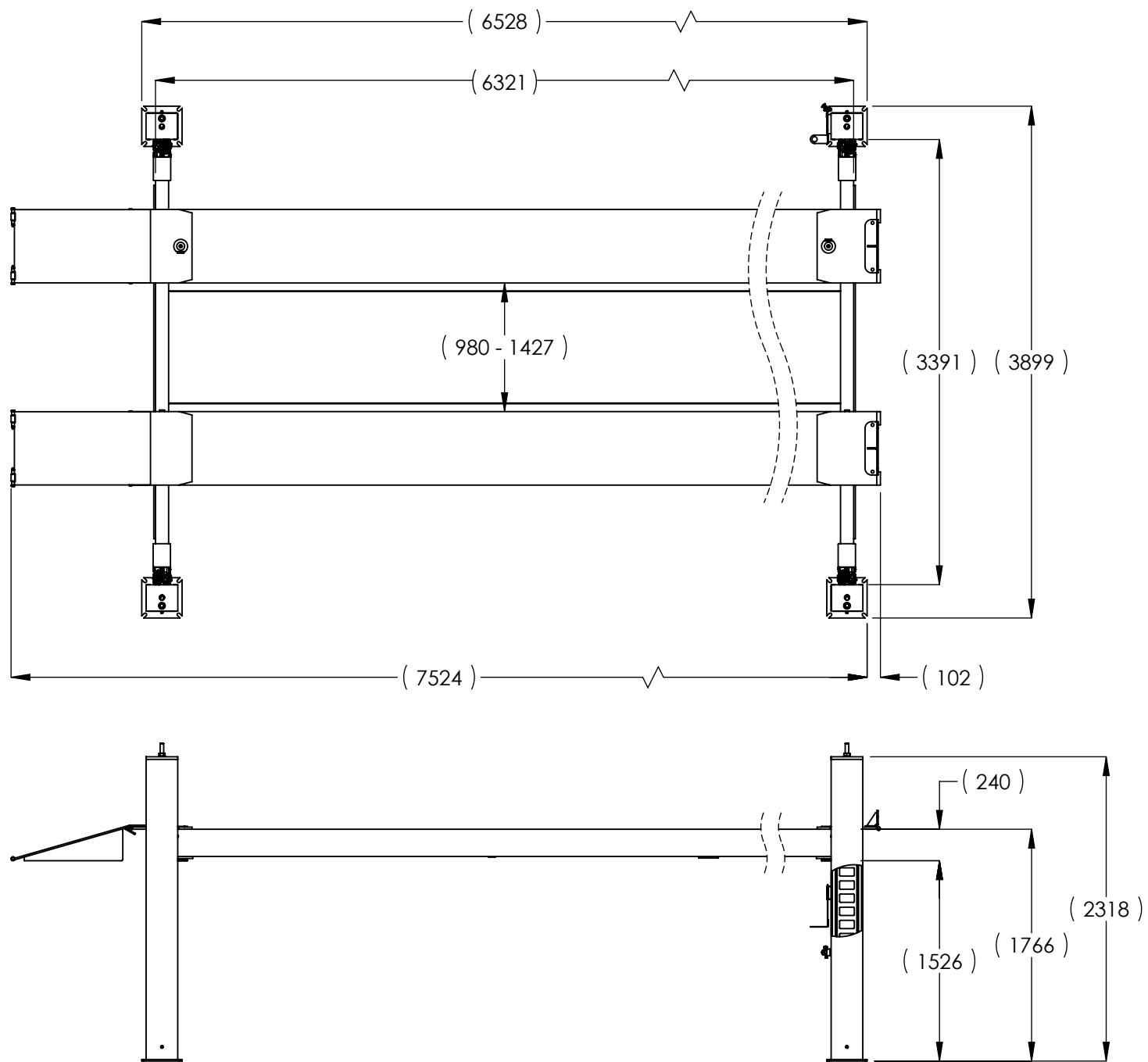



NOTE: UNLESS OTHERWISE SPECIFIED.

1. SEE SHIPPING INSTRUCTIONS FOR FINAL PACKAGING
2. ALL LABELS TO BE APPLIED TO POSTS AFTER PAINTING.
3. SEE ATTACHED LABEL PLACEMENT SHEET

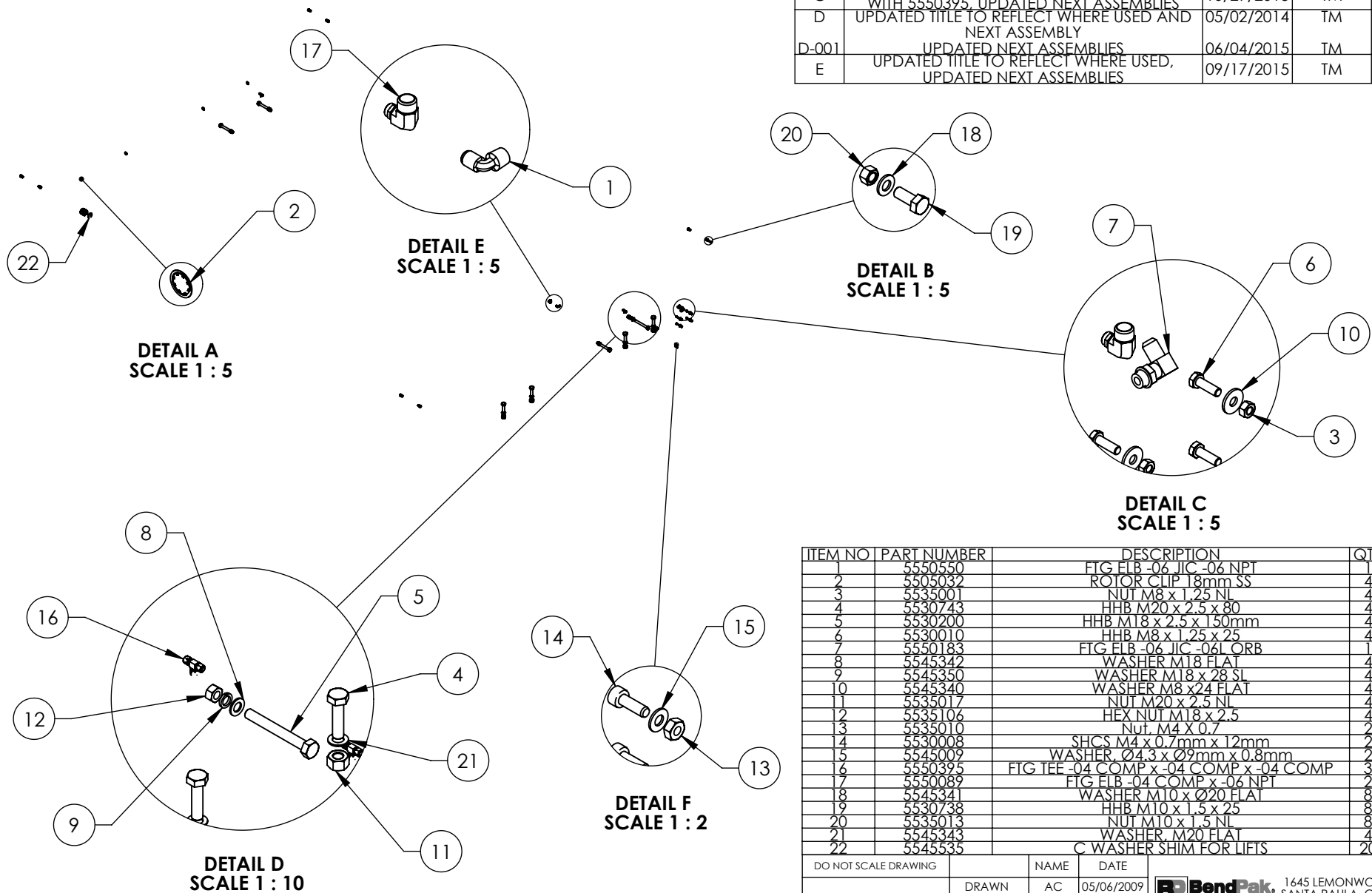
| ITEM NO. | PART NUMBER | DESCRIPTION | QTY. | REV |
|----------|-------------|----------------------------------|------|-----|
| 1 | 5245007 | HDS-27 LIFT SUPERSTRUCTURE | 1 | E |
| 2 | 5250172 | PARTS BOX HDS-27 | 1 | E |
| 3 | 5905465 | MANUFACTURER LABEL | 1 | -- |
| 4 | 5905200 | 4 POST DECAL KIT, LESS ALI | 1 | B |
| 5 | 5905103 | WARNING ALI/WL 200 | 1 | -- |
| 6 | 5905407 | MAX CAP DANGER 27K | 1 | -- |
| 7 | 5905940 | PRODUCT DATA LABEL | 1 | -- |
| 8 | 5905953 | SERIAL NUMBER INTERIOR TAG PLATE | 1 | -- |

| | | | | | |
|---|--|--|------------|--|--|
| DO NOT SCALE DRAWING | | NAME | DATE |  BendPak <small>PROVIDING AUTOMATIC SERVICE SOLUTIONS</small> 1645 LEMONWOOD DR. SANTA PAULA, CA 93060 | |
| DRAWN | | TM | 09/22/2014 | | |
| CHECKED | | | | | |
| DIMENSIONS ARE IN MM  | | THIRD ANGLE PROJECTION | | TITLE: HDS-27 PRODUCTION LIFT VER C (CE CERT) | |
| | |  | | SIZE DWG. NO. | |
| | | <p>PROPRIETARY AND CONFIDENTIAL THE INFORMATION CONTAINED IN THIS DRAWING IS THE SOLE PROPERTY OF BENDPAK INC. ANY REPRODUCTION IN PART OR AS A WHOLE WITHOUT THE WRITTEN PERMISSION OF BENDPAK INC. IS PROHIBITED.</p> | | A 5260059 | |
| SCALE: 1:60 | | | | REV E | |
| | | | | SHEET 1 OF 2 | |



| | | |
|---|----------------------------|---------------------|
|  1645 LEMONWOOD DR. SANTA PAULA, CA 93060 | | |
| TITLE: HDS-27 PRODUCTION LIFT VER C (CE CERT) | | |
| SIZE A | DWG. NO. 5260059 | REV E |
| SCALE: 1:45 | | SHEET 2 OF 2 |

| REVISION | | DATE | EDITED BY | ECO# |
|----------|--|------------|-----------|-------|
| REV | DESCRIPTION | | | |
| C | REPLACED 5550004 WITH 5550089, 5550489 WITH 5550395, UPDATED NEXT ASSEMBLIES | 10/29/2013 | TM | 00593 |
| D | UPDATED TITLE TO REFLECT WHERE USED AND NEXT ASSEMBLY | 05/02/2014 | TM | 00646 |
| D-001 | UPDATED NEXT ASSEMBLIES | 06/04/2015 | TM | 00683 |
| E | UPDATED TITLE TO REFLECT WHERE USED, UPDATED NEXT ASSEMBLIES | 09/17/2015 | TM | 00724 |



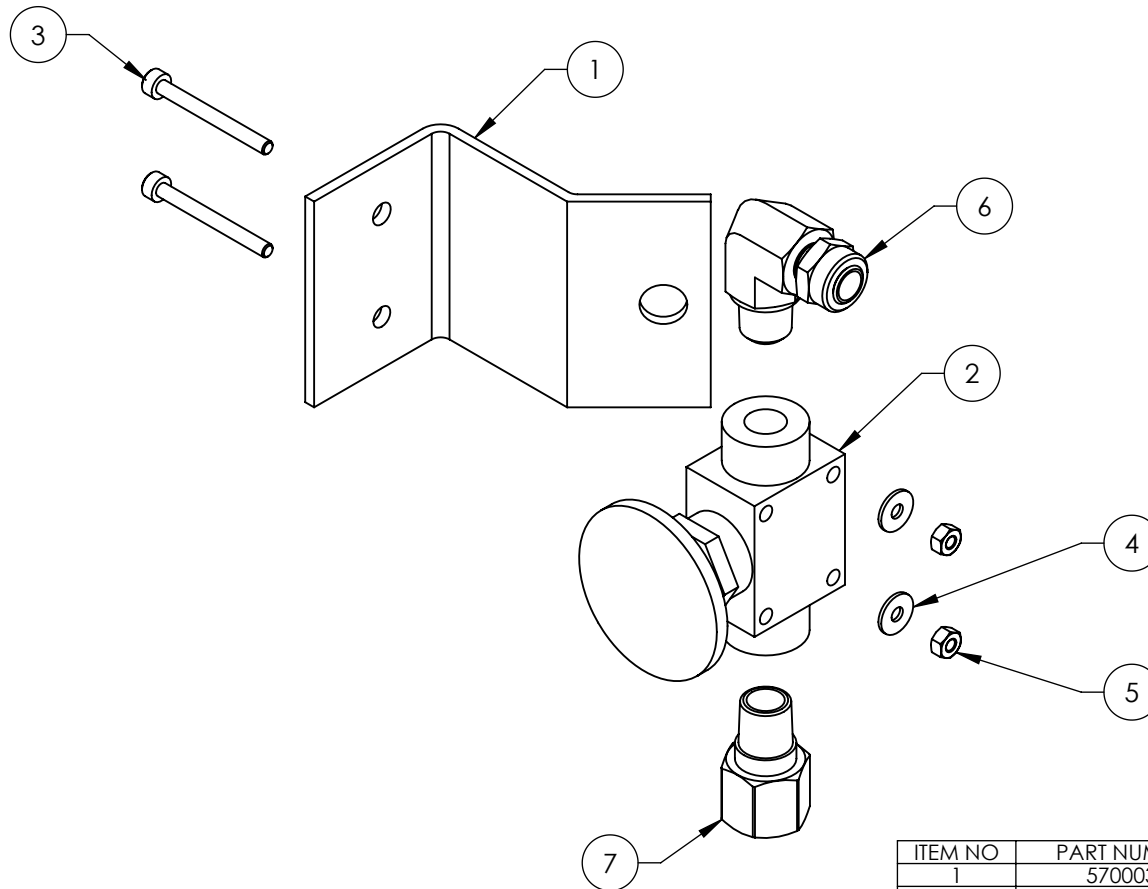
| ITEM NO | PART NUMBER | DESCRIPTION | QTY | REV |
|---------|-------------|--|-----|-----|
| 1 | 5550550 | FTG FLB -06 JIC -06 NPT | 1 | -- |
| 2 | 5550302 | ROTOR CLIP 18mm SS | 4 | -- |
| 3 | 5535001 | NUT M8 x 1.25 NL | 4 | -- |
| 4 | 5530743 | HHB M20 x 2.5 x 80 | 4 | -- |
| 5 | 5530200 | HHB M18 x 2.5 x 150mm | 4 | -- |
| 6 | 5530010 | HHB M8 x 1.25 x 25 | 4 | -- |
| 7 | 5550183 | FTG FLB -06 JIC -06L ORB | 1 | -- |
| 8 | 5545342 | WASHER M18 FLAT | 4 | -- |
| 9 | 5545350 | WASHER M18 x 28 SL | 4 | -- |
| 10 | 5545340 | WASHER M8 x 24 FLAT | 4 | -- |
| 11 | 5535017 | NUT M20 x 2.5 NL | 4 | -- |
| 12 | 5535106 | HEX NUT M18 x 2.5 | 4 | -- |
| 13 | 5535010 | Nut, M4 X 0.7 | 2 | -- |
| 14 | 5530008 | SHCS M4 x 0.7mm x 12mm | 2 | -- |
| 15 | 5545009 | WASHER, Ø4.3 x Ø9mm x 0.8mm | 2 | -- |
| 16 | 5550395 | FTG TEE -04 COMP x -04 COMP x -04 COMP | 3 | -- |
| 17 | 5550089 | FTG FLB -04 COMP x -06 NPT | 2 | -- |
| 18 | 5545341 | WASHER M10 x Ø20 FLAT | 8 | -- |
| 19 | 5530738 | HHB M10 x 1.5 x 25 | 8 | -- |
| 20 | 5535013 | NUT M10 x 1.5 NL | 8 | -- |
| 21 | 5545343 | WASHER, M20 FLAT | 4 | -- |
| 22 | 5545535 | C WASHER SHIM FOR LIFTS | 20 | -- |

| | | | | |
|----------------------|--|------------------------|------------|---|
| DO NOT SCALE DRAWING | | NAME | DATE | 1645 LEMONWOOD DR. SANTA PAULA, CA 93060 |
| DRAWN | | AC | 05/06/2009 | |
| CHECKED | | | | |
| DIMENSIONS ARE IN MM | | THIRD ANGLE PROJECTION | | TITLE: HDS-27/35 SERIES PARTS BAG |
| | | | | SIZE DWG. NO. |
| | | | | A 5174600 |
| | | | | REV E |
| SCALE: 1:50 | | | | SHEET 1 OF 1 |



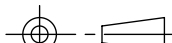
NOTE: UNLESS OTHERWISE SPECIFIED.
1. SEE SHIPPING INSTRUCTIONS FOR FINAL PACKAGING

| NEXT ASSEMBLY |
|---------------|
| 5250159 |
| 5250172 |
| 5250175 |
| 5250177 |
| 5250179 |
| 5250364 |

| REVISION | | | | |
|----------|--|------------|-----------|-------|
| REV | DESCRIPTION | DATE | EDITED BY | ECO# |
| D | UPDATED NEXT ASSEMBLY, ADDED 5550486 | 02/24/2010 | AC | 00333 |
| D-001 | UPDATED NEXT ASSEMBLY | 01/21/2011 | TM | 00439 |
| D-010 | UPDATED NEXT ASSEMBLIES | 07/24/2013 | TM | 00611 |
| E | REPLACED 5550481 WITH 5550087 | 10/29/2013 | TM | 00593 |
| F | REPLACED 5590240 WITH 5590175, UPDATED NEXT ASSEMBLIES | 05/05/2015 | MR | 00683 |



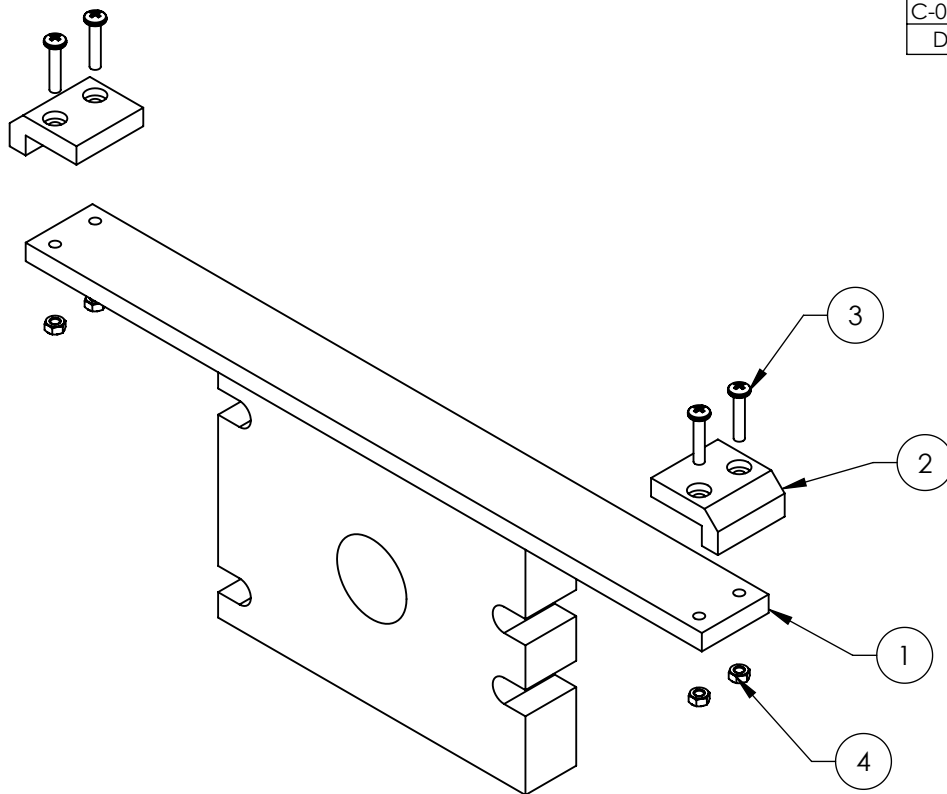
| ITEM NO | PART NUMBER | DESCRIPTION | QTY | REV |
|---------|-------------|-----------------------------|-----|-----|
| 1 | 5700031 | ZERO ANGLE MTG BRACKET | 1 | C |
| 2 | 5590175 | PUSH BUTTON AIR VALVE | 1 | B |
| 3 | 5530043 | SHCS M3 x 0.5 x 30 | 2 | - |
| 4 | 5545024 | WASHER M3 x 9mm | 2 | - |
| 5 | 5535020 | NUT M3 x 0.5 NL | 2 | - |
| 6 | 5550087 | FTG ELB -04 COMP x -02 NPT | 1 | - |
| 7 | 5550486 | FTG NPL -02 NPT x -04 F NPT | 1 | - |

| | | | | | |
|---|--|--|------------|---|--|
| DO NOT SCALE DRAWING | | NAME | DATE |  BendPak. 1645 LEMONWOOD DR. MOVING AUTOMOTIVE SERVICE SOLUTIONS SANTA PAULA, CA 93060 | |
| DRAWN | | AC | 3/14/2008 | | |
| CHECKED | | CA | 09/02/2015 | | |
| DIMENSIONS ARE IN MM  | | THIRD ANGLE PROJECTION | | TITLE: | |
| | |  | | PUSH BUTTON AIR ASSEMBLY | |
| | | PROPRIETARY AND CONFIDENTIAL THE INFORMATION CONTAINED IN THIS DRAWING IS THE SOLE PROPERTY OF BENDPAK INC. ANY REPRODUCTION IN PART OR AS A WHOLE WITHOUT THE WRITTEN PERMISSION OF BENDPAK INC. IS PROHIBITED. | | SIZE DWG. NO. | |
| A 5215096 | | | | F | |
| SCALE:2:3 | | | | SHEET 1 OF 1 | |

NOTE: UNLESS OTHERWISE SPECIFIED.



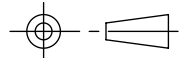
1. ASSEMBLE ITEMS AS SHOWN

| |
|---------------|
| NEXT ASSEMBLY |
| HD/HDS/HDSO |
| SERIES |
| 5250118 |
| 5250249 |
| 5250364 |



| REVISION | | | | |
|----------|---|------------|-----------|-------|
| REV | DESCRIPTION | DATE | EDITED BY | ECO# |
| A | DERIVED FROM H-294/H-310, PRODUCTION RELEASE | 10/21/2008 | GJZ | 00241 |
| B | UPDATED BOM REVISION | 03/08/2010 | TM | 00333 |
| C | CHANGED TITLE WAS "ALIGNMENT PLATE" NOW "CYLINDER FLANGE ARM", UPDATED BOM REVISION | 05/17/2010 | TM | 00355 |
| C-001 | UPDATED NEXT ASSEMBLY | 06/02/2015 | TM | 00683 |
| D | UPDATED NEXT ASSEMBLY AND BOM REVISION | 09/18/2015 | TM | 00724 |

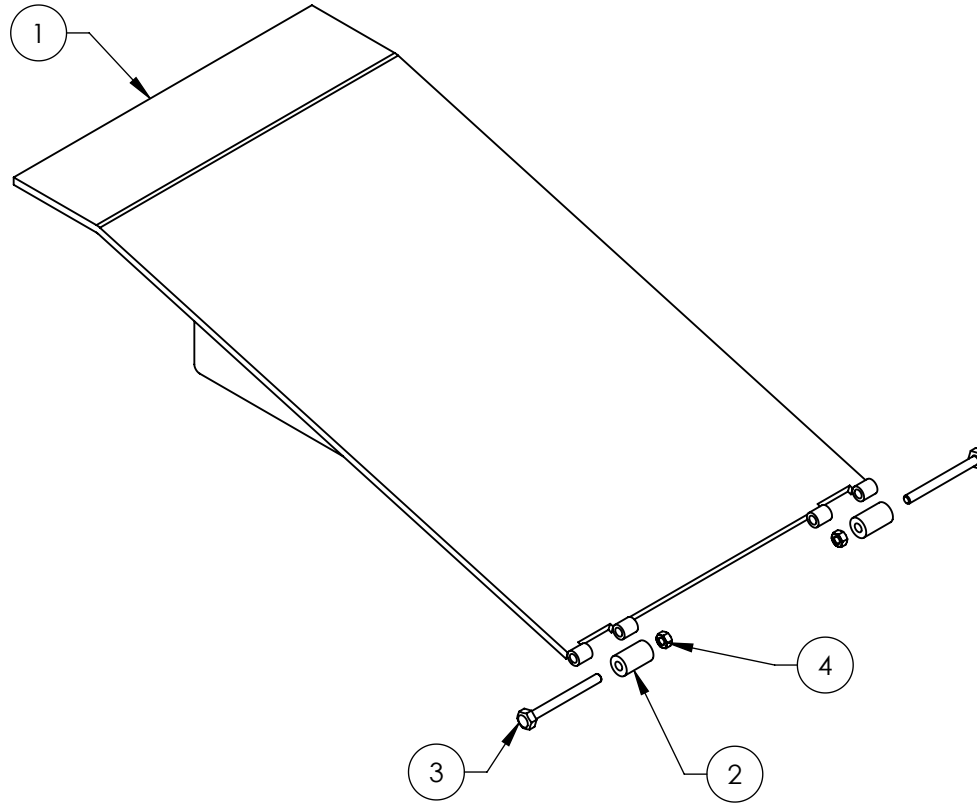
| ITEM NO | PART NUMBER | DESCRIPTION | QTY | REV |
|---------|-------------|--|-----|-----|
| 1 | 5620202 | HDS-27 SERIES CYLINDER FLANGE ARM WELDMENT | 1 | C |
| 2 | 5716153 | HDS-27/35 SERIES ALIGNMENT BLOCK | 2 | B |
| 3 | 5530095 | BHPs M6 x 1 x 30mmL | 4 | - |
| 4 | 5535357 | NUT M6 x 1.0 NL | 4 | - |

| | | | | | |
|---|--|---|------------|---|-----|
| DO NOT SCALE DRAWING | | NAME | DATE |  BendPak. 1645 LEMONWOOD DR. SANTA PAULA, CA 93060 | |
| DRAWN | | GJZ | 10/21/2008 | | |
| CHECKED | | CA | 02/02/2016 | | |
| DIMENSIONS ARE IN MM | | THIRD ANGLE PROJECTION | | TITLE: HDS-27 SERIES CYLINDER FLANGE ARM ASSEMBLY | |
|  | |  | | SIZE DWG. NO. | REV |
| | | | | A 5215159 | D |
| | | | | SCALE: 1:4 | |
| NEXT ASSEMBLY 5215157 5215158 5215164 5215689 | | PROPRIETARY AND CONFIDENTIAL THE INFORMATION CONTAINED IN THIS DRAWING IS THE SOLE PROPERTY OF BENDPAK INC. ANY REPRODUCTION IN PART OR AS A WHOLE WITHOUT THE WRITTEN PERMISSION OF BENDPAK INC. IS PROHIBITED. | | SHEET 1 OF 1 | |



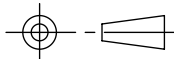
NOTE: UNLESS OTHERWISE SPECIFIED.

1. SEE SHIPPING INSTRUCTIONS FOR FINAL PACKAGING
2. ASSEMBLE ITEMS AS SHOWN

| REVISION | | | | |
|----------|---|------------|-----------|---------------|
| REV | DESCRIPTION | DATE | EDITED BY | ECO# |
| B | UPDATED TITLE TO REFLECT WHERE USED, UPDATED NEXT ASSEMBLIES | 05/02/2013 | TM | 00593 |
| C | UPDATED BOM REVISION | 09/09/2014 | TM | 00666 PREA |
| C-001 | UPDATED NEXT ASSEMBLIES | 09/26/2014 | TM | 00666 |
| C-002 | UPDATED NEXT ASSEMBLY | 06/04/2015 | TM | 00683 |
| D | UPDATED BOM REVISION UPDATED NEXT ASSEMBLY | 10/05/2015 | TM | 00724 |



| ITEM NO | PART NUMBER | DESCRIPTION | QTY | REV |
|---------|-------------|-------------------------------|-----|-----|
| 1 | 5620206 | HDS-27 DRIVE UP RAMP WELDMENT | 1 | D |
| 2 | 5575663 | HDS-27/35 DRIVE UP RAMP WHEEL | 2 | B |
| 3 | 5530035 | HHB M12 x 1.75 x 130 | 2 | - |
| 4 | 5535012 | NUT M12x1.75 NL | 2 | - |

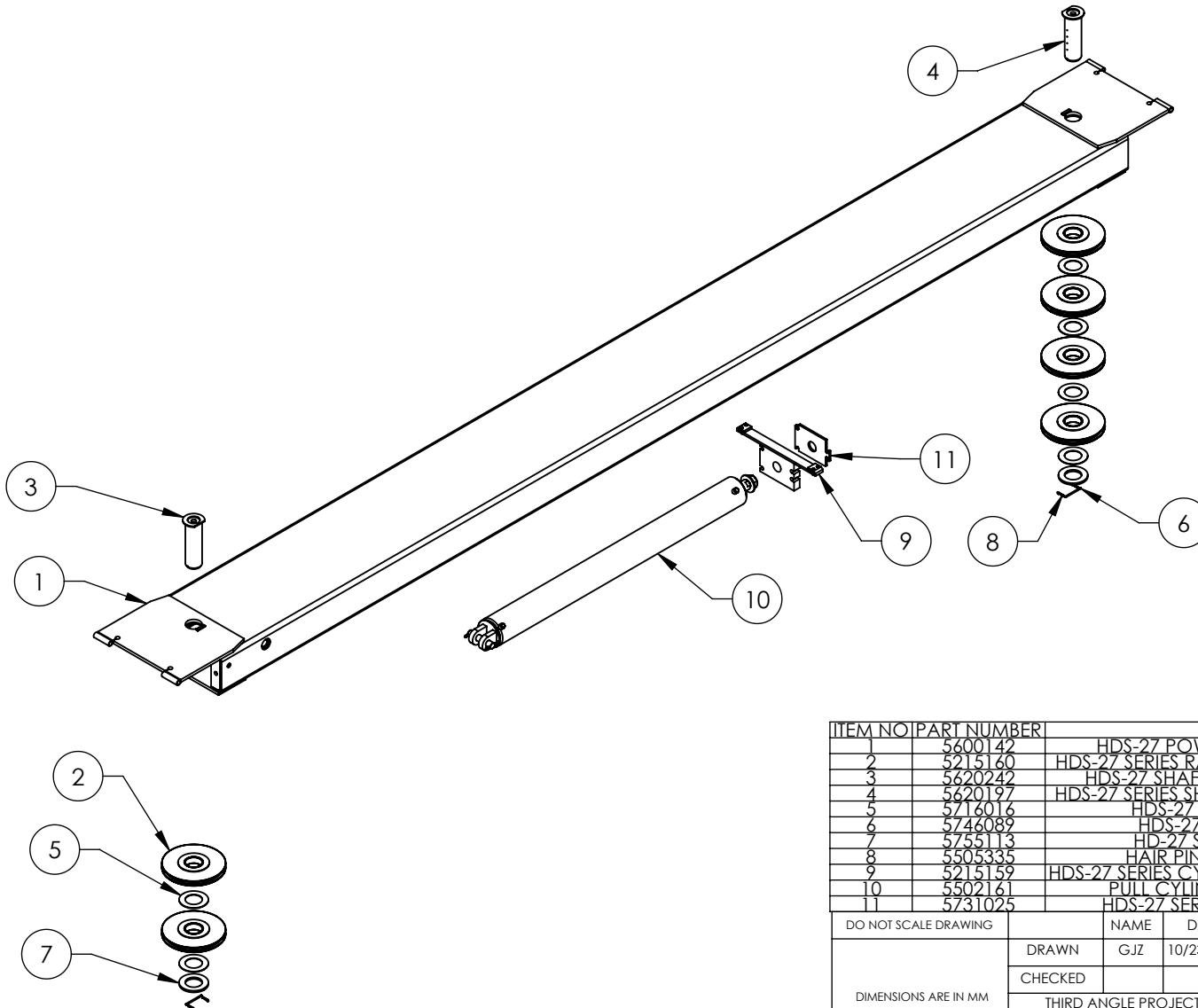
| | | | | | |
|---|--|--|------------|---|--|
| DO NOT SCALE DRAWING | | NAME | DATE |  BendPak. 1645 LEMONWOOD DR. SANTA PAULA, CA 93060 | |
| DRAWN | | GJZ | 10/23/2008 | | |
| CHECKED | | | | | |
| DIMENSIONS ARE IN MM  | | THIRD ANGLE PROJECTION | | TITLE: HDS-27 DRIVE UP RAMP ASSEMBLY | |
| | |  | | SIZE DWG. NO. | |
| | | <p>PROPRIETARY AND CONFIDENTIAL</p> <p>THE INFORMATION CONTAINED IN THIS DRAWING IS THE SOLE PROPERTY OF BENDPAK INC. ANY REPRODUCTION IN PART OR AS A WHOLE WITHOUT THE WRITTEN PERMISSION OF BENDPAK INC. IS PROHIBITED.</p> | | A 5215163 | |
| SCALE: 1:10 | | | | | |
| SHEET 1 OF 1 | | | | | |

NOTE: UNLESS OTHERWISE SPECIFIED.

- SEE SHIPPING INSTRUCTIONS FOR FINAL PACKAGING
- ASSEMBLE ITEMS AS SHOWN

| |
|---------------|
| NEXT ASSEMBLY |
| 5245007 |
| 5245011 |
| 5245405 |


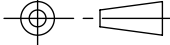

| REVISION | | | | |
|----------|--|------------|-----------|-------|
| REV | DESCRIPTION | DATE | EDITED BY | ECO# |
| N | REMOVED 5535031, 5505175 AND 5505120 | 01/29/2015 | MR | 00675 |
| P | UPDATED BOM REVISION | 05/01/2015 | MR | 00683 |
| R | REMOVED 5550026, UPDATED BOM REVISIONS | 09/18/2015 | TM | 00724 |



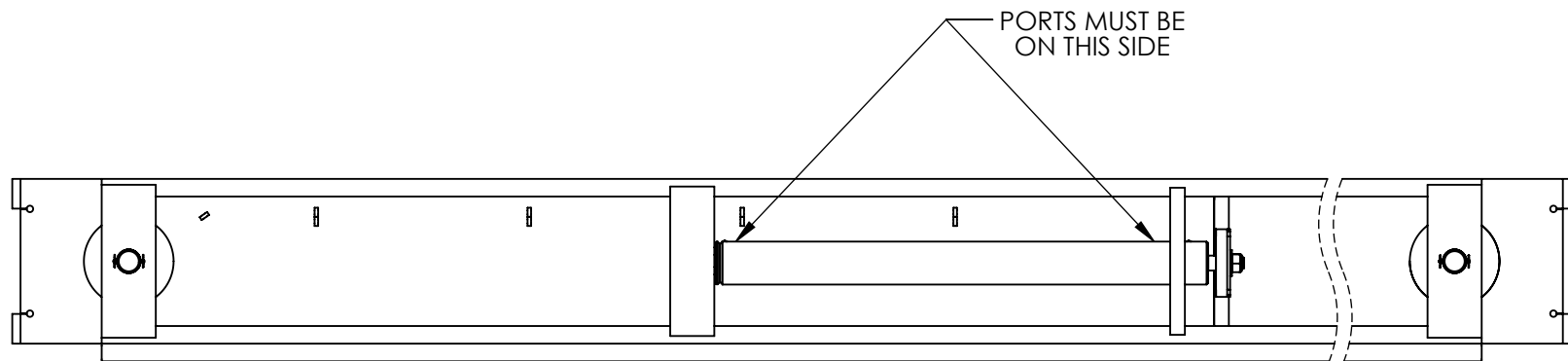
NOTE: UNLESS OTHERWISE SPECIFIED.

1. SEE SHIPPING INSTRUCTIONS FOR FINAL PACKAGING
2. ASSEMBLE ITEMS AS SHOWN
3. VERIFY CYLINDER PORTS ARE CAPPED OFF WITH 3/8" NPT STEEL PLUG

| ITEM NO | PART NUMBER | DESCRIPTION | QTY | REV |
|---------|-------------|--|-----|-----|
| 1 | 5600142 | HDS-27 POWER SIDE RAMP WELDMENT | 1 | G |
| 2 | 5215160 | HDS-27 SERIES RAMP SHEAVE ROLLER ASSEMBLY | 6 | B |
| 3 | 5620242 | HDS-27 SHAFT WELDMENT, 2 SHEAVE END | 1 | A |
| 4 | 5620197 | HDS-27 SERIES SHAFT WELDMENT, 4 SHEAVE END | 1 | A |
| 5 | 5716016 | HDS-27 SERIES SHEAVE SPACER | 6 | B |
| 6 | 5746089 | HDS-27/35 SHEAVE SHAFT PIN | 2 | B |
| 7 | 5755113 | HD-27 SPACER, RAMP SHEAVE | 2 | A |
| 8 | 5505335 | HAIR PIN #203, Ø0.093" X 1 5/8" | 4 | - |
| 9 | 5215159 | HDS-27 SERIES CYLINDER FLANGE ARM ASSEMBLY | 1 | D |
| 10 | 5502161 | PULL CYLINDER ASSEMBLY Ø5.0 x 60 | 1 | F |
| 11 | 5731025 | HDS-27 SERIES CABLE RETAINER PLATE | 1 | A |

| | | | |
|---|--|---|----------------|
| DO NOT SCALE DRAWING | | NAME | DATE |
| DIMENSIONS ARE IN MM  | | DRAWN | GJZ 10/23/2008 |
| | | CHECKED | |
| THIRD ANGLE PROJECTION  | |  1645 LEMONWOOD DR. SANTA PAULA, CA 93060 | |
| PROPRIETARY AND CONFIDENTIAL THE INFORMATION CONTAINED IN THIS DRAWING IS THE SOLE PROPERTY OF BENDPAK INC. ANY REPRODUCTION IN PART OR AS A WHOLE WITHOUT THE WRITTEN PERMISSION OF BENDPAK INC. IS PROHIBITED. | | TITLE: HDS-27 POWER SIDE RAMP ASSEMBLY | |
| SIZE DWG. NO. A 5215164 | | REV R | |
| SCALE: 1:32 | | SHEET 1 OF 2 | |

NEXT ASSEMBLY
5245007



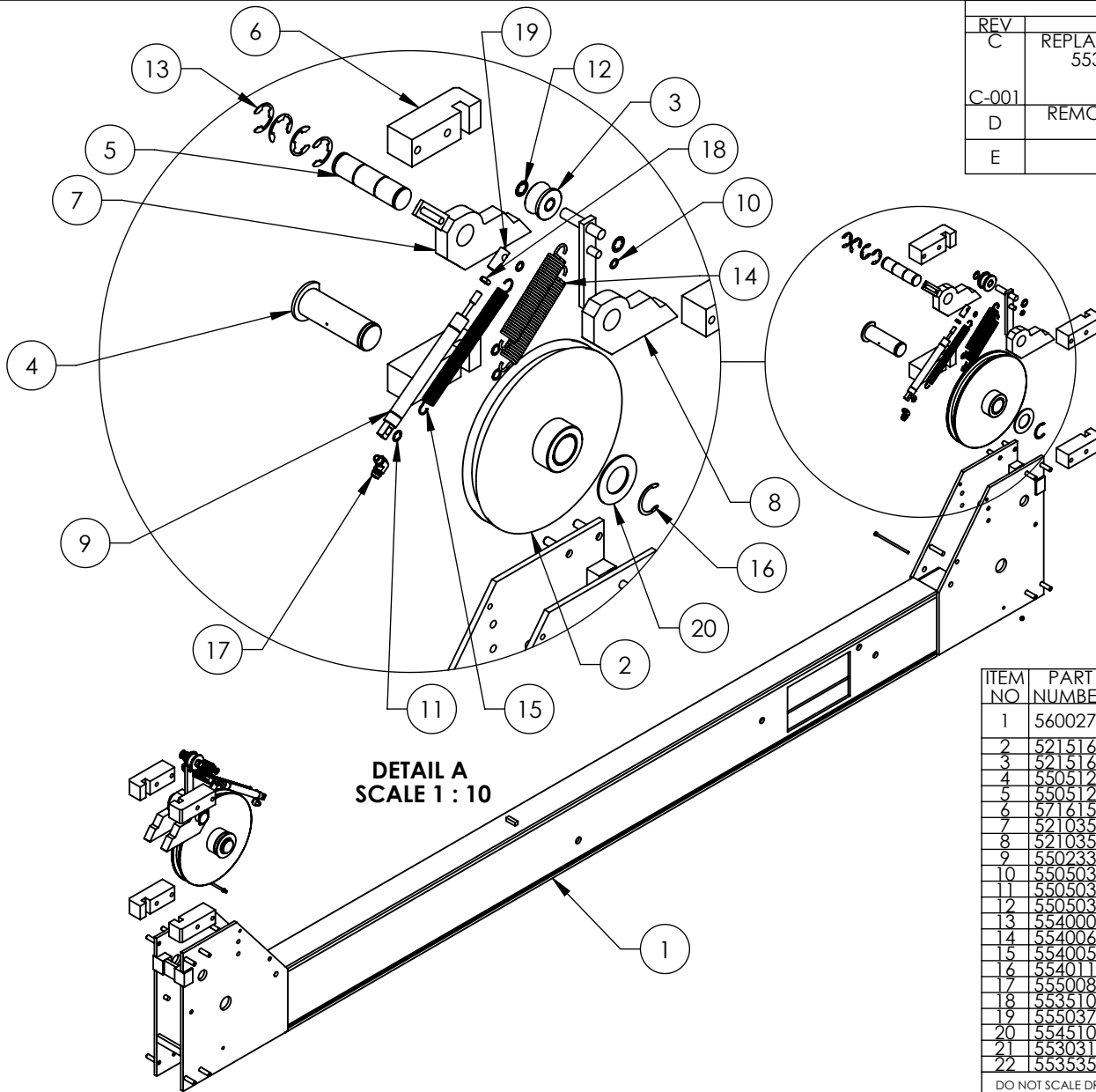
BendPak 1645 LEMONWOOD DR.
HYDRAULIC AUTOMATIC SERVICE EQUIPMENT SANTA PAULA, CA 93060

TITLE: HDS-27 POWER SIDE
 RAMP ASSEMBLY

| SIZE | DWG. NO. | REV |
|----------|----------|-----|
| A | 5215164 | R |

SCALE: 1:25

SHEET 2 OF 2



DETAIL A
SCALE 1 : 10

| REVISION | | | | |
|----------|--|------------|-----------|-------|
| REV | DESCRIPTION | DATE | EDITED BY | ECO# |
| C | REPLACED 5700164 WITH 5716633, REMOVED 5530317 AND 5535357, UPDATED BOM REVISION AND NEXT ASSEMBLIES | 09/09/2014 | TM | 00666 |
| C-001 | UPDATED NEXT ASSEMBLY | 06/04/2015 | TM | 00683 |
| D | REMOVED 5716633 AND 5550026, UPDATED NEXT ASSEMBLY | 09/21/2015 | TM | 00724 |
| E | UPDATED BOM REVISIONS | 12/28/2015 | JM | 00741 |

| ITEM NO | PART NUMBER | DESCRIPTION | QTY | REV |
|---------|-------------|--|-----|-----|
| 1 | 5600279 | HDS-27/35 SERIES LARGE WINDOW CROSSTUBE WELDMENT | 1 | J |
| 2 | 5215166 | HDS-27 SERIES CROSSTUBE SHEAVE ASSEMBLY | 2 | B |
| 3 | 5215169 | HDS-27 SERIES SAFETY ROLLER ASSEMBLY | 2 | C |
| 4 | 5505124 | HDS-27/35 SERIES CROSS TUBE SHEAVE SHAFT | 2 | C |
| 5 | 5505125 | HDS-27/35 SAFETY PIN | 2 | C |
| 6 | 5716152 | HDS-27/35 SERIES PLASTIC SLIDE BLOCK | 8 | C |
| 7 | 5210359 | HDS-27/35 SERIES SAFETY WELDMENT #1 | 2 | B |
| 8 | 5210358 | HDS-27/35 SERIES SAFETY WELDMENT #2 | 2 | B |
| 9 | 5502335 | AIR CYLINDER, Ø.75 x 4.0" STROKE | 2 | - |
| 10 | 5505030 | ROTOR CLIP 10mm SS | 4 | - |
| 11 | 5505031 | ROTOR CLIP 12mm SS | 6 | - |
| 12 | 5505033 | ROTOR CLIP 16mm SS | 4 | - |
| 13 | 5540002 | F RING Ø1.375" OD TRUARC X5133-137 | 8 | - |
| 14 | 5540060 | SPRING Ø29 x 178mm, SLACK SAFETY | 4 | A |
| 15 | 5540055 | SPRING Ø19 x 241mm, AIR CYLINDER | 2 | A |
| 16 | 5540112 | SNAP RING: TRUARC 5103-175 | 2 | - |
| 17 | 5550087 | FIG ELB -04 COMP x -02 NPT | 2 | - |
| 18 | 5535101 | 3/8-16 HEX NUT JAM | 2 | - |
| 19 | 5550376 | HDS-27/35 SERIES ADAPTER, 1" AIR CYLINDER | 2 | B |
| 20 | 5545108 | WASHER M45 x 80 FLAT | 2 | - |
| 21 | 5530317 | HHB M6 x 1 x 136 | 2 | - |
| 22 | 5535357 | NUT M6 x 1.0 NL | 2 | - |

DO NOT SCALE DRAWING

DIMENSIONS ARE IN MM



| NAME | DATE |
|------------------------|---------------|
| DRAWN | TM 04/29/2013 |
| CHECKED | |
| THIRD ANGLE PROJECTION | |
| | |

PROPRIETARY AND CONFIDENTIAL
THE INFORMATION CONTAINED IN THIS DRAWING IS THE SOLE PROPERTY OF BENDPAK INC. ANY REPRODUCTION IN PART OR AS A WHOLE WITHOUT THE WRITTEN PERMISSION OF BENDPAK INC. IS PROHIBITED.

BendPak 1645 LEMONWOOD DR.
SANTA PAULA, CA 93060

TITLE: HDS-27 SERIES LARGE WINDOW CROSSTUBE ASSEMBLY

| SIZE | DWG. NO. | REV |
|------|----------|-----|
| A | 5215608 | E |

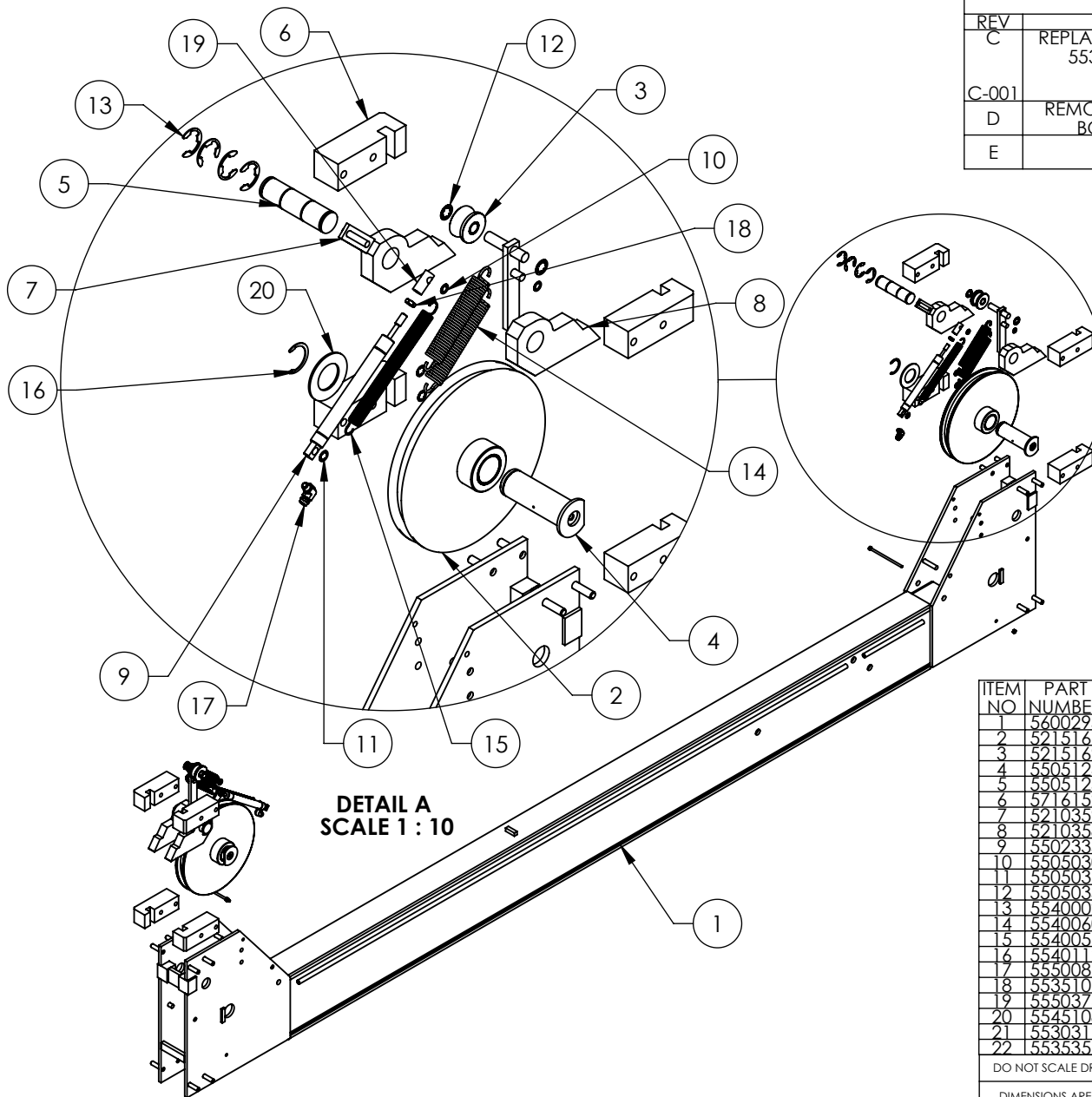
SCALE: 1:20

SHEET 1 OF 1

NOTE: UNLESS OTHERWISE SPECIFIED.

- SEE SHIPPING INSTRUCTIONS FOR FINAL PACKAGING
- ASSEMBLE ITEMS AS SHOWN

| NEXT ASSEMBLY |
|---------------|
| 5245007 |
| 5245011 |
| 5245405 |



DETAIL A
SCALE 1 : 10

NOTE: UNLESS OTHERWISE SPECIFIED.

1. SEE SHIPPING INSTRUCTIONS FOR FINAL PACKAGING
2. ASSEMBLE ITEMS AS SHOWN

| REV | DESCRIPTION | REVISION | DATE | EDITED BY | ECO# |
|-------|--|----------|------------|-----------|-------|
| C | REPLACED 5700164 WITH 5716633, REMOVED 5530317 AND 5535357, UPDATED BOM REVISION AND NEXT ASSEMBLIES | | 09/09/2014 | TM | 00666 |
| C-001 | UPDATED NEXT ASSEMBLY | | 06/04/2015 | TM | 00683 |
| D | REMOVED 5716633 AND 5550026, UPDATED BOM REVISION AND NEXT ASSEMBLY | | 09/18/2015 | TM | 00724 |
| E | UPDATED BOM REVISIONS | | 12/28/2015 | JM | 00741 |

| ITEM NO | PART NUMBER | DESCRIPTION | QTY | REV |
|---------|-------------|--|-----|-----|
| 1 | 5600293 | HDS-27/35 SERIES SMALL WINDOW CROSSTUBE WELDMENT | 1 | J |
| 2 | 5215166 | HDS-27 SERIES CROSSTUBE SHEAVE ASSEMBLY | 2 | B |
| 3 | 5215169 | HDS-27 SERIES SAFETY ROLLER ASSEMBLY | 2 | C |
| 4 | 5505124 | HDS-27/35 SERIES CROSS TUBE SHEAVE SHAFT | 2 | C |
| 5 | 5505125 | HDS-27/35 SAFETY PIN | 2 | C |
| 6 | 5716152 | HDS-27/35 SERIES PLASTIC SLIDE BLOCK | 8 | C |
| 7 | 5210359 | HDS-27/35 SERIES SAFETY WELDMENT #1 | 2 | B |
| 8 | 5210358 | HDS-27/35 SERIES SAFETY WELDMENT #2 | 2 | B |
| 9 | 5502335 | AIR CYLINDER, Ø.75 x 4.0" STROKE | 2 | - |
| 10 | 5505030 | ROTOR CLIP 10mm SS | 4 | - |
| 11 | 5505031 | ROTOR CLIP 12mm SS | 6 | - |
| 12 | 5505033 | ROTOR CLIP 16mm SS | 4 | - |
| 13 | 5540002 | E RING Ø1.375" OD TRUARC X5133-137 | 8 | - |
| 14 | 5540060 | SPRING Ø29 x 178mm. SLACK SAFETY | 4 | A |
| 15 | 5540055 | SPRING Ø19 x 241mm. AIR CYLINDER | 2 | A |
| 16 | 5540112 | SNAP RING: TRUARC 5103-175 | 2 | - |
| 17 | 5550087 | FTG FLB -.04 COMP x -.02 NPT | 2 | - |
| 18 | 5535101 | 3/8-16 HEX NUT JAM | 2 | - |
| 19 | 5550376 | HDS-27/35 SERIES ADAPTER, 1" AIR CYLINDER | 2 | B |
| 20 | 5545108 | WASHER M45 x 80 FLAT | 2 | - |
| 21 | 5530317 | HHB M6 x 1 x 136 | 2 | - |
| 22 | 5535357 | NUT M6 x 1.0 NL | 2 | - |

DO NOT SCALE DRAWING

DIMENSIONS ARE IN MM



| NAME | DATE |
|------------------------|---------------|
| DRAWN | TM 04/30/2013 |
| CHECKED | |
| THIRD ANGLE PROJECTION | |
| | |

PROPRIETARY AND CONFIDENTIAL
THE INFORMATION CONTAINED IN THIS DRAWING IS THE SOLE PROPERTY OF BENDPAK INC. ANY REPRODUCTION IN PART OR AS A WHOLE WITHOUT THE WRITTEN PERMISSION OF BENDPAK INC. IS PROHIBITED.

BendPak 1645 LEMONWOOD DR.
SANTA PAULA, CA 93060

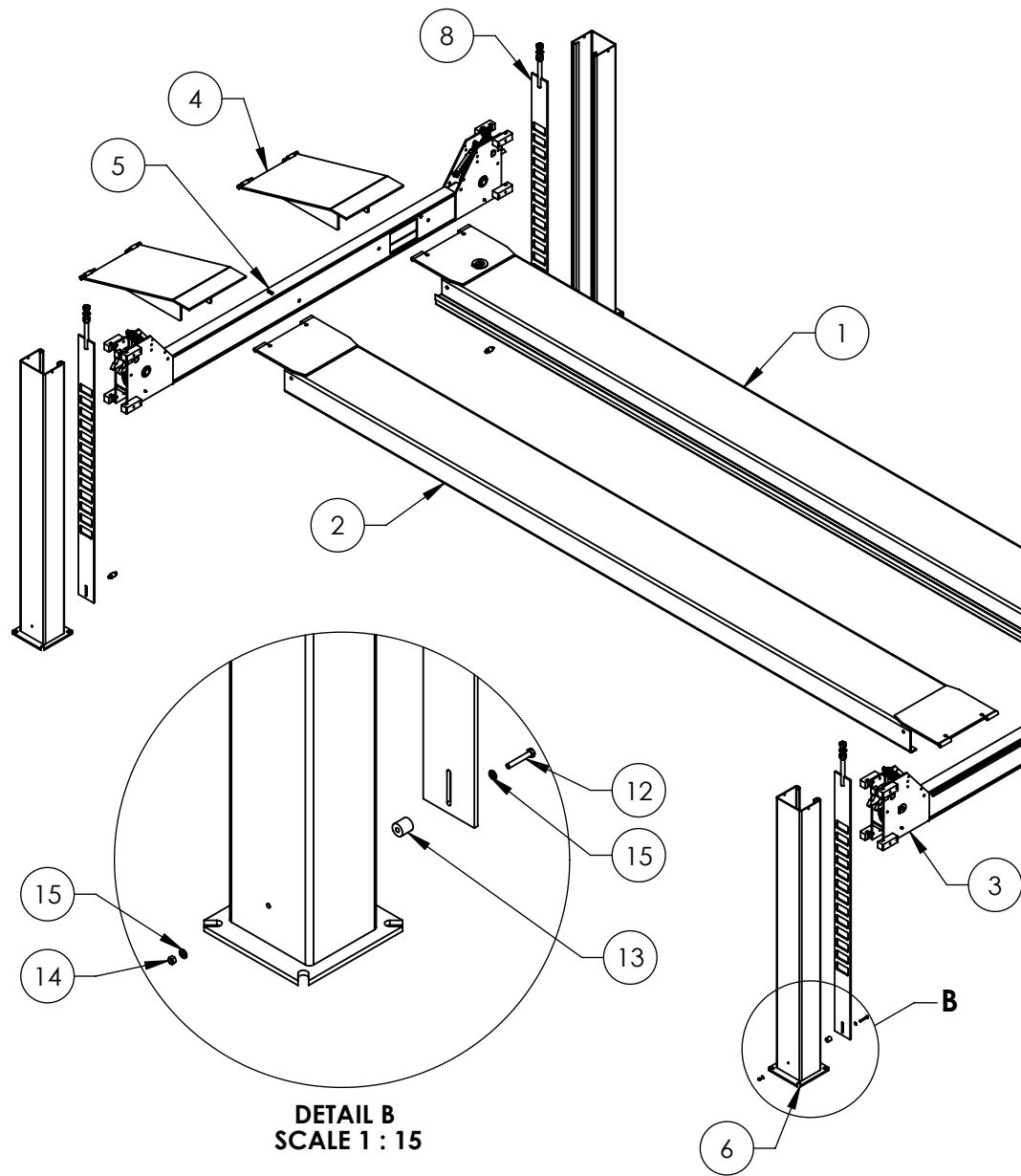
TITLE: HDS-27 SERIES SMALL WINDOW CROSSTUBE ASSEMBLY

SIZE DWG. NO. REV
A 5215609 E

SCALE: 1:20

SHEET 1 OF 1

| NEXT ASSEMBLY |
|---------------|
| 5245007 |
| 5245011 |
| 5245405 |



| REVISION | | | | |
|----------|--|------------|-----------|-------|
| REV | DESCRIPTION | DATE | EDITED BY | ECO# |
| C | UPDATED BOM REVISION | 05/01/2015 | MR | 00683 |
| D | UPDATED BOM REVISIONS | 09/18/2015 | TM | 00724 |
| E | ADDED (8) 5545341, (4) 5535013, (4) 5530046 AND (4) 5746088, uPDATEd BOM REVISIONS | 12/28/2015 | JM | 00741 |

DETAIL A
SCALE 1 : 4

DETAIL B
SCALE 1 : 15

| ITEM NO | PART NUMBER | DESCRIPTION | QTY | REV |
|---------|-------------|---|-----|-----|
| 1 | 5215164 | HDS-27 POWER SIDE RAMP ASSEMBLY | 1 | R |
| 2 | 5620109 | HDS-27 OFF SIDE RAMP WELDMENT | 1 | D |
| 3 | 5215609 | HDS-27 SERIES SMALL WINDOW CROSSTUBE ASSEMBLY | 1 | E |
| 4 | 5215163 | HDS-27 DRIVE UP RAMP ASSEMBLY | 2 | D |
| 5 | 5215608 | HDS-27 SERIES LARGE WINDOW CROSSTUBE ASSEMBLY | 1 | E |
| 6 | 5600350 | HDS-27/35 SERIES POST WELDMENT | 3 | C |
| 7 | 5600351 | HDS-27/35 SERIES POWER POST WELDMENT | 1 | C |
| 8 | 5600875 | HDS-27 SERIES SAFETY LADDER WELDMENT | 4 | B |
| 9 | 5535211 | NUT M27 x 3.0 NL | 4 | - |
| 10 | 5535210 | NUT M27 x 3.0 | 4 | - |
| 11 | 5545103 | WASHER M27 x 50mm | 4 | - |
| 12 | 5530046 | HHB M10x1.5x65 | 4 | - |
| 13 | 5746088 | HDS-27 SPACER, SAFETY LADDER, 31mm LG | 4 | A |
| 14 | 5535013 | NUT M10 x 1.5 NL | 4 | - |
| 15 | 5545341 | WASHER M10 x Ø20 FLAT | 8 | - |

DO NOT SCALE DRAWING

NAME DATE
DRAWN TM 09/10/2014

CHECKED
THIRD ANGLE PROJECTION

DIMENSIONS ARE IN MM



PROPRIETARY AND CONFIDENTIAL
THE INFORMATION CONTAINED IN THIS DRAWING IS THE SOLE PROPERTY OF BENDPAK INC. ANY REPRODUCTION IN PART OR AS A WHOLE WITHOUT THE WRITTEN PERMISSION OF BENDPAK INC. IS PROHIBITED.

BendPak 1645 LEMONWOOD DR.
SANTA PAULA, CA 93060

TITLE: HDS-27 LIFT
SUPERSTRUCTURE

SIZE DWG. NO. REV
A 5245007 E

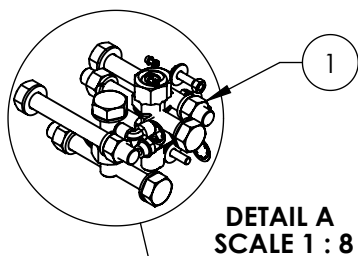
SCALE: 1:50

SHEET 1 OF 1

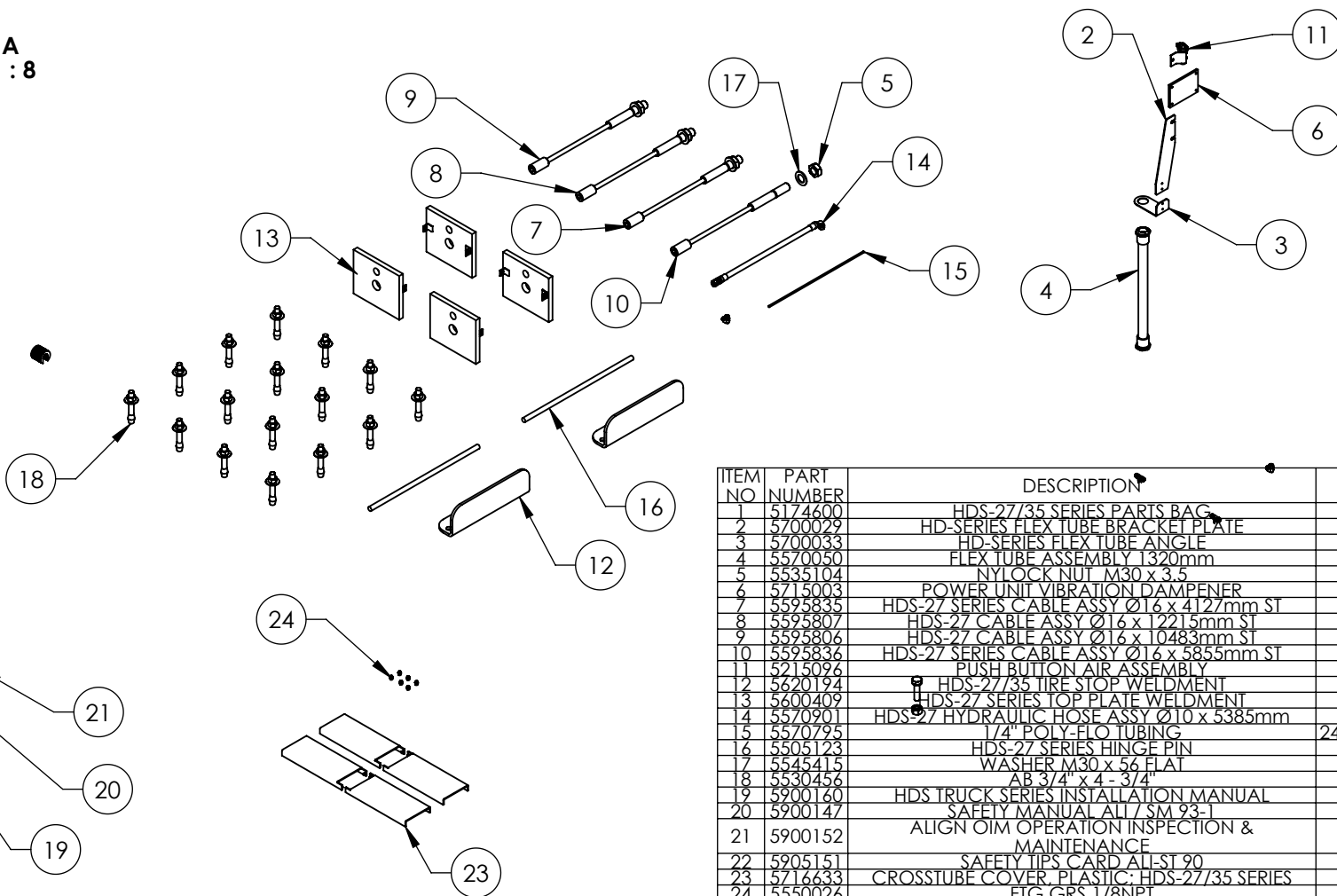
NOTE: UNLESS OTHERWISE SPECIFIED.

- SEE SHIPPING INSTRUCTIONS FOR FINAL PACKAGING
- FASTEN NUTS AND WASHERS TO SAFETY LADDERS IN ORDER SHOWN FOR SHIPMENT

NEXT ASSEMBLY
5260059



DETAIL A
SCALE 1 : 8



| REVISION | | | |
|----------|--|------------|-----------|
| REV | DESCRIPTION | DATE | EDITED BY |
| C | REMOVED 5736724, 5900153, AND 5215637, UPDATED NEXT ASSEMBLY | 09/22/2014 | TM |
| D | REMOVED 5905103, 5905200, 5905407, 5905465, 5905940, AND 5930605, UPDATED BOM REVISION | 08/04/2015 | TM |
| E | ADDED 5716633 AND 5550026, REMOVED 5900151, UPDATED BOM REVISIONS | 09/18/2015 | TM |

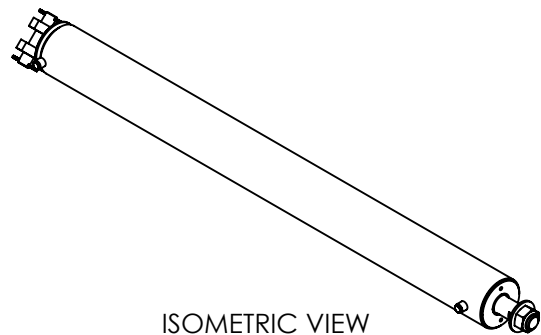
| ITEM NO | PART NUMBER | DESCRIPTION | QTY. | REV |
|---------|-------------|--|----------|-----|
| 1 | 5174600 | HDS-27/35 SERIES PARTS BAG | 1 | F |
| 2 | 5700029 | HD-SERIES FLEX TUBE BRACKET PLATE | 1 | F |
| 3 | 5700033 | HD-SERIES FLEX TUBE ANGLE | 1 | F |
| 4 | 5570050 | FLEX TUBE ASSEMBLY 1320mm | 1 | B |
| 5 | 5535104 | NYLOCK NUT M30 x 3.5 | 4 | - |
| 6 | 5715003 | POWER UNIT VIBRATION DAMPENER | 1 | B |
| 7 | 5595835 | HDS-27 SERIES CABLE ASSY Ø16 x 4127mm ST | 1 | C |
| 8 | 5595807 | HDS-27 CABLE ASSY Ø16 x 12215mm ST | 1 | G |
| 9 | 5595806 | HDS-27 CABLE ASSY Ø16 x 10483mm ST | 1 | F |
| 10 | 5595836 | HDS-27 SERIES CABLE ASSY Ø16 x 5855mm ST | 1 | C |
| 11 | 5215096 | PUSH BUTTON AIR ASSEMBLY | 1 | F |
| 12 | 5620194 | HDS-27/35 TIRE STOP WELDMENT | 2 | B |
| 13 | 5600409 | HDS-27 SERIES TOP PLATE WELDMENT | 4 | B |
| 14 | 5570901 | HDS-27 HYDRAULIC HOSE ASSY Ø10 x 5385mm | 1 | C |
| 15 | 5570795 | 1/4\" POLY-FLO TUBING | 24000mm* | - |
| 16 | 5505123 | HDS-27 SERIES HINGE PIN | 2 | B |
| 17 | 5545415 | WASHER M30 x 56 FLAT | 4 | - |
| 18 | 5530456 | AB 3/4\" x 4 - 3/4\" | 16 | - |
| 19 | 5900160 | HDS TRUCK SERIES INSTALLATION MANUAL | 1 | - |
| 20 | 5900147 | SAFETY MANUAL ALL / SM 93-1 | 1 | - |
| 21 | 5900152 | ALIGN OIM OPERATION INSPECTION & MAINTENANCE | 1 | - |
| 22 | 5905151 | SAFETY TIPS CARD ALL ST 90 | 1 | - |
| 23 | 5716633 | CROSSTUBE COVER, PLASTIC: HDS-27/35 SERIES | 4 | B |
| 24 | 5550026 | FTG GRS 1/8NPT | 6 | - |

NOTE: UNLESS OTHERWISE SPECIFIED.

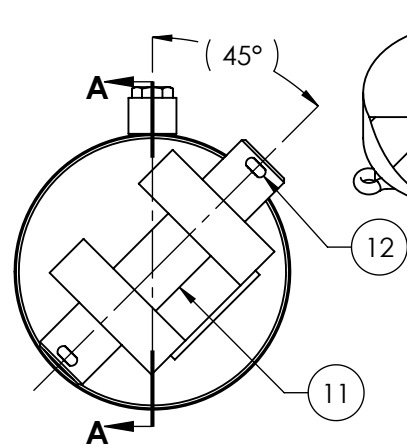
- SEE SHIPPING INSTRUCTIONS FOR FINAL PACKAGING
- INSERT PARTS BAG INTO PARTS BOX FOR SHIPMENT
- THREAD 5535104 WITH 5545415 ONTO CABLES FOR SHIPMENT
- HOSES AND CABLES IN REPRESENTATIONAL FORM
- (*) LENGTH FOR REFERENCE ONLY

NEXT ASSEMBLY
5260059

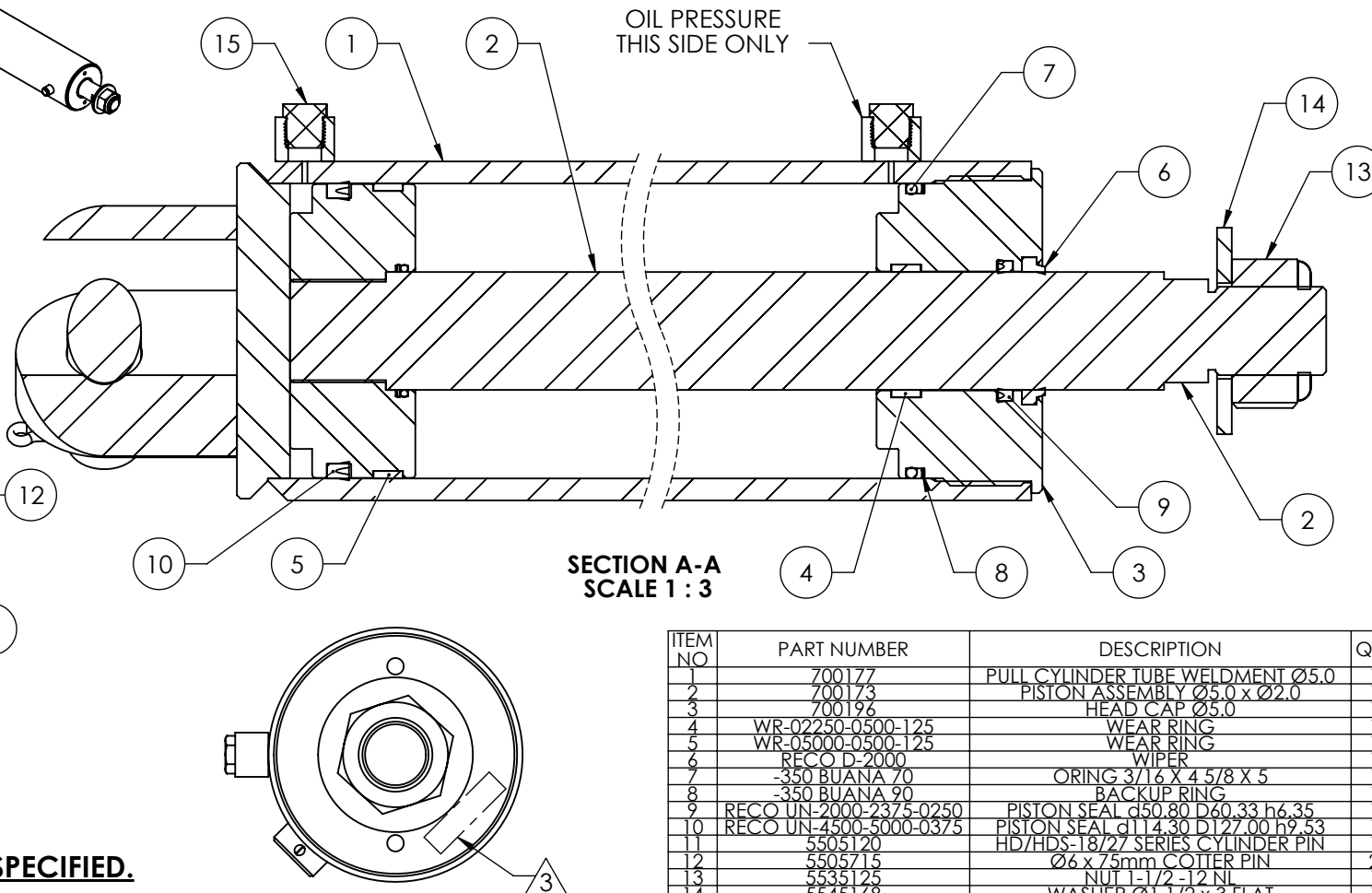
| | | | |
|---|--|--|------------|
| DO NOT SCALE DRAWING | | NAME | DATE |
| DRAWN | | TM | 05/08/2013 |
| CHECKED | | | |
| THIRD ANGLE PROJECTION | | | |
| | | Proprietary and Confidential THE INFORMATION CONTAINED IN THIS DRAWING IS THE SOLE PROPERTY OF BENDPAK INC. ANY REPRODUCTION IN PART OR AS A WHOLE WITHOUT THE WRITTEN PERMISSION OF BENDPAK INC. IS PROHIBITED. | |
| 1645 LEMONWOOD DR. SANTA PAULA, CA 93060 | | TITLE: PARTS BOX HDS-27 | |
| SIZE DWG. NO. A 5250172 | | REV E | |
| SCALE: 1:25 | | SHEET 1 OF 1 | |



ISOMETRIC VIEW
FOR REFERENCE ONLY
DO NOT SCALE



SHEET 1 & 2



OIL PRESSURE
THIS SIDE ONLY



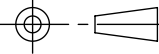
SECTION A-A
SCALE 1:3

NOTE: UNLESS OTHERWISE SPECIFIED.

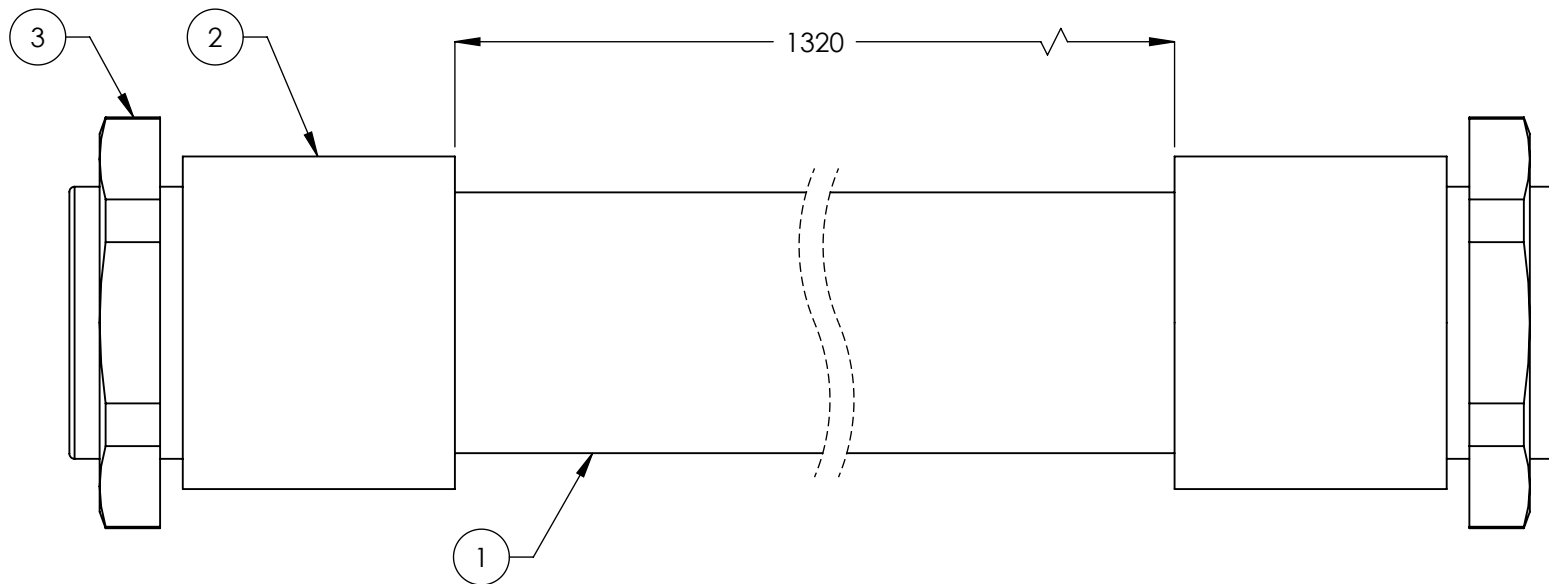
1. GREASE SEALS PRIOR TO ASSEMBLY
2. PRESSURE TEST CYLINDER ASSEMBLY 100% TO 3,600 PSI.(NO LEAKS)
3. MARK IN APPROXIMATE LOCATION WITH THE FOLLOWING INFORMATION: MANUFACTURER
MONTH/ YEAR
PART NUMBER
4. PARKER UR-1870-2000-250 OR HERCULES DRU25-2.00-25 MAY BE USED IN PLACE OF RECO UN-2000-2375-0250
5. PARKER 4615-UP-25004500-375 OR DPU25-4.50-37 MAY BE USED IN PLACE OF RECO UN-4500-5000-0375
6. PARKER 4615-SHD-02000, HERCULES ST-200 OR AFM D-2000 MAY BE USED IN PLACE OF RECO D-2000
7. HERCULES 612-500-050 MAY BE USED IN PLACE OF WR-03000-0500-125
8. HERCULES 612-225-050 MAY BE USED IN PLACE OF WR-02250-0500-125
9. VERIFY HYDRAULIC PORTS ARE CAPPED WITH PLUGS

| REVISION | | | | |
|----------|---|------------|-----------|-------|
| REV | DESCRIPTION | DATE | EDITED BY | ECO# |
| D | UPDATED BOM REVISION, CHANGED TEST PRESSURE TO 3600 psi | 04/05/2012 | MT | 00507 |
| E | ADDED 5535125, 5505715, 5505120 AND 5545168 | 01/21/2015 | MR | 00675 |
| F | ADDED 5580112, REMOVED 5540005, UPDATED BOM REVISION | 06/03/2015 | TM | 00683 |


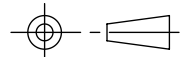
| ITEM NO | PART NUMBER | DESCRIPTION | QTY | REV |
|---------|------------------------|-----------------------------------|-----|-----|
| 1 | 700177 | PULL CYLINDER TUBE WELDMENT Ø5.0 | 1 | F |
| 2 | 700173 | PISTON ASSEMBLY Ø5.0 x Ø2.0 | 1 | C |
| 3 | 700196 | HEAD CAP Ø5.0 | 1 | B |
| 4 | WR-02250-0500-125 | WEAR RING | 1 | -- |
| 5 | WR-05000-0500-125 | WEAR RING | 1 | -- |
| 6 | RECO D-2000 | WIPER | 1 | -- |
| 7 | -350 BUANA 70 | ORING 3/16 X 4.5/8 X 5 | 1 | -- |
| 8 | -350 BUANA 90 | BACKUP RING | 1 | -- |
| 9 | RECO UN-2000-2375-0250 | PISTON SEAL d50.80 D60.33 h6.35 | 1 | -- |
| 10 | RECO UN-4500-5000-0375 | PISTON SEAL d114.30 D127.00 h9.53 | 1 | -- |
| 11 | 5505120 | HD/HDS-18/27 SERIES CYLINDER PIN | 1 | B |
| 12 | 5505715 | Ø6 x 75mm COILER PIN | 2 | -- |
| 13 | 5535125 | NUT 1-1/2 -12 NI | 1 | -- |
| 14 | 5545168 | WASHER Ø1 1/2 x 3 FLAT | 1 | -- |
| 15 | 5580112 | 3/8-18 NPT PLASTIC SCREW PLUG | 2 | -- |

| | | | | | | |
|---|--|--|------|---|-------------------------------------|--------------|
| DO NOT SCALE DRAWING | | NAME | DATE |  1645 LEMONWOOD DR. SANTA PAULA, CA 93060 | | |
| DIMENSIONS ARE IN INCHES | | DRAWN | TM | 12/04/2007 | | |
| | | CHECKED | CA | 08/27/2015 | | |
|  | | THIRD ANGLE PROJECTION | | | TITLE: | |
| | |  | | | PULL CYLINDER ASSEMBLY Ø5.0 x 60 | |
| | | <p>PROPRIETARY AND CONFIDENTIAL THE INFORMATION CONTAINED IN THIS DRAWING IS THE SOLE PROPERTY OF BENDPAK INC. ANY REPRODUCTION IN PART OR AS A WHOLE WITHOUT THE WRITTEN PERMISSION OF BENDPAK INC. IS PROHIBITED.</p> | | | SIZE DWG. NO. | |
| | | | | | A 5502161 | REV F |
| | | | | | SCALE: 1:4 | SHEET 1 OF 2 |

| REVISION | | DATE | EDITED BY | ECO# |
|----------|---|------------|-----------|-------|
| REV. | DESCRIPTION | | | |
| A | PRODUCTION RELEASE | 12/24/2007 | AC | 00104 |
| A-001 | CHANGED SURFACE FINISH FROM 3.2 μm TO 1.6 $\text{Ra } \mu\text{m}$ | 09/05/2008 | GJ | 00237 |
| A-002 | UPDATED NEXT ASSEMBLY | 10/02/2008 | AC | 00140 |
| B | UPDATE TUBE TO NEW STYLE, UPDATED NEXT ASSEMBLY AND TITLE | 12/11/2008 | AC | 00256 |
| B-001 | UPDATED NEXT ASSEMBLY | 05/04/2009 | AC | 00277 |
| B-013 | UPDATED NEXT ASSEMBLIES | 05/17/2013 | TM | 00593 |



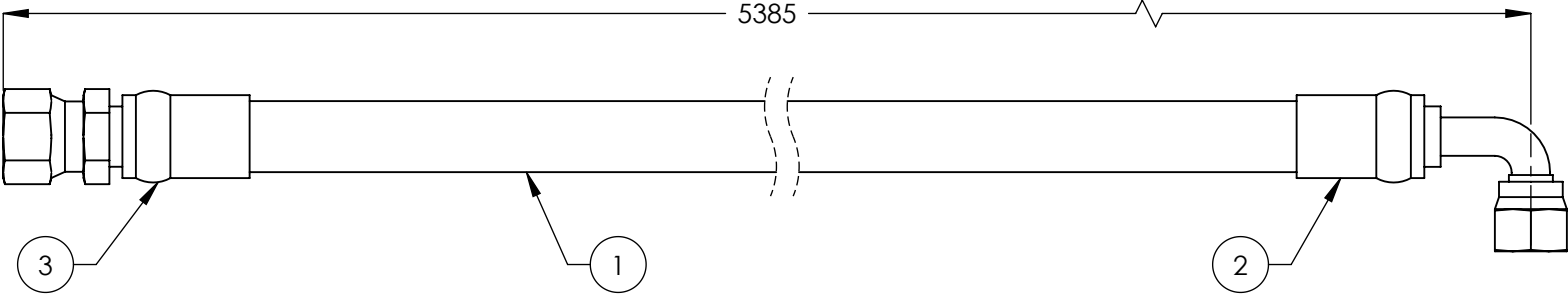
| ITEM NO | PART NUMBER | DESCRIPTION | QTY. | REV |
|---------|-------------|---|---------|-----|
| 1 | 5570053 | PE FLEX TUBE $\varnothing 34.5 \times \varnothing 29$ | 1386mm* | - |
| 2 | 5555555 | WQG1-M36/AD34.5 CONNECTOR | 2 | - |
| 3 | 5535050 | PLASTIC NUT M36 x 2 | 2 | - |


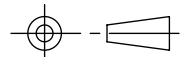
| | | | | | |
|---|--|---|------|--|---|
| DO NOT SCALE DRAWING | | NAME | DATE | <div> BendPak. <small>PROVIDING AUTOMOTIVE SERVICE SOLUTIONS</small></div> <div>1645 LEMONWOOD DR. SANTA PAULA, CA 93060</div> | |
| DIMENSIONS ARE IN MM TOLERANCES: | | DRAWN | AC | | |
| 0. = ±1.5 0.0 = ±1.0 0.00 = ±0.25 0.000 = ±0.13 | | CHECKED | | | <div>TITLE:</div> <div>FLEX TUBE ASSEMBLY 1320mm</div> <div><div>SIZE</div><div>DWG. NO.</div><div>A5570050</div></div> <div><div>REV</div><div>B</div></div> <div><div>SCALE: 1:1</div><div>SHEET 1 OF 1</div></div> |
| ANGULAR: MACH ±2° | | THIRD ANGLE PROJECTION | | | |
| SURFACE FINISH 1.6 ISO Ra μm FOR MACHINED SURFACES UNLESS OTHERWISE SPECIFIED | |  | | | |
| MATERIAL: | | PROPRIETARY AND CONFIDENTIAL | | | |
| SIZE: | | THE INFORMATION CONTAINED IN THIS DRAWING IS THE SOLE PROPERTY OF BENDPAK INC. . ANY REPRODUCTION IN PART OR AS A WHOLE WITHOUT THE WRITTEN PERMISSION OF BENDPAK INC. IS PROHIBITED. | | | |

NOTE: UNLESS OTHERWISE SPECIFIED.

- FOR ITEM 1 SPECIFICATIONS REFER TO PART SPECIFICATION FORM
- (*)ITEM 1 QTY FOR REFERENCE ONLY

| REVISION | | | | |
|----------|---|------------|-----------|-------|
| REV | DESCRIPTION | DATE | EDITED BY | ECO# |
| A | PRODUCTION RELEASE | 08/27/2008 | AC | 00235 |
| B | UNOBSOLETE DUE TO USE IN HDS-27/27A, CHANGED LENGTH WAS 3385 NOW 5385, UPDATED TITLE AND NEXT ASSEMBLY TO REFLECT WHERE USED | 06/11/2010 | TM | 00371 |
| B-001 | UPDATED NEXT ASSEMBLIES | 05/21/2013 | TM | 00593 |
| C | UPDATED TITLE TO REFLECT WHERE USED | 09/18/2015 | TM | 00724 |



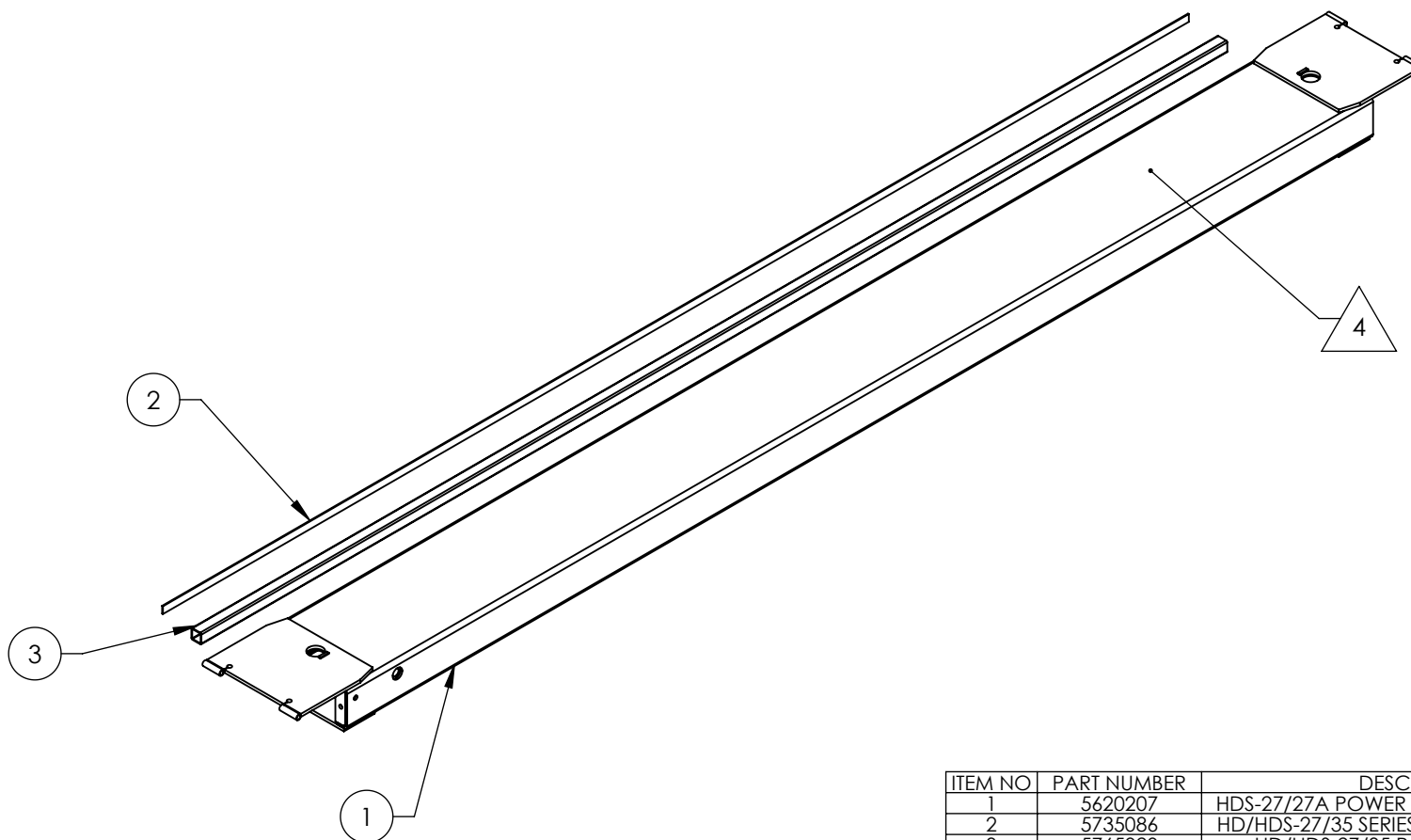
| ITEM NO | PART NUMBER | DESCRIPTION | | QTY. | REV |
|---|-------------|--|---------------|---|--------------|
| 1 | 5570116 | Ø10 ID HYDRAULIC HOSE | | 5325*mm | - |
| 2 | 5550337 | FTG ELB -06 CRIMP x -06 JIC | | 1 | - |
| 3 | 5550336 | FTG NPL -06 CRIMP x -06 JIC | | 1 | - |
| DO NOT SCALE DRAWING | | NAME | DATE | <div> BendPak. 1645 LEMONWOOD DR. SANTA PAULA, CA 93060</div> | |
| | | DRAWN | AC 08/27/2008 | | |
| | | CHECKED | CA 02/02/2016 | | |
| <div>DIMENSIONS ARE IN MM TOLERANCES: 0. = ±1.5 0.0 = ±1.0 0.00 = ±0.25 0.000 = ±0.13 ANGULAR: MACH ±2° SURFACE FINISH 1.6 ISO Ra µm FOR MACHINED SURFACES UNLESS OTHERWISE SPECIFIED</div> | | THIRD ANGLE PROJECTION | | TITLE: HDS-27 HYDRAULIC HOSE ASSY Ø10 x 5385mm | |
| | |  | | SIZE DWG. NO. | |
| | | <div>PROPRIETARY AND CONFIDENTIAL THE INFORMATION CONTAINED IN THIS DRAWING IS THE SOLE PROPERTY OF BENDPAK INC. ANY REPRODUCTION IN PART OR AS A WHOLE WITHOUT THE WRITTEN PERMISSION OF BENDPAK INC. IS PROHIBITED.</div> | | REV | |
| | | A 5570901 | | C | |
| | | SCALE: 1:2 | | | SHEET 1 OF 1 |

NOTE: UNLESS OTHERWISE SPECIFIED.

1. FOR ITEM 1 SPECIFICATIONS REFER TO PART SPECIFICATION FORM

2. (*)ITEM 1 QTY FOR REFERENCE ONLY


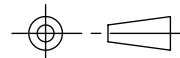
| REVISION | | | | |
|----------|----------------------|------------|-----------|-------|
| REV | DESCRIPTION | DATE | EDITED BY | ECO# |
| E | UPDATED BOM REVISION | 12/06/212 | TM | 00545 |
| F | UPDATED BOM REVISION | 05/15/2013 | TM | 00593 |
| G | UPDATED BOM REVISION | 09/17/2015 | TM | 00724 |



NOTE: UNLESS OTHERWISE SPECIFIED.

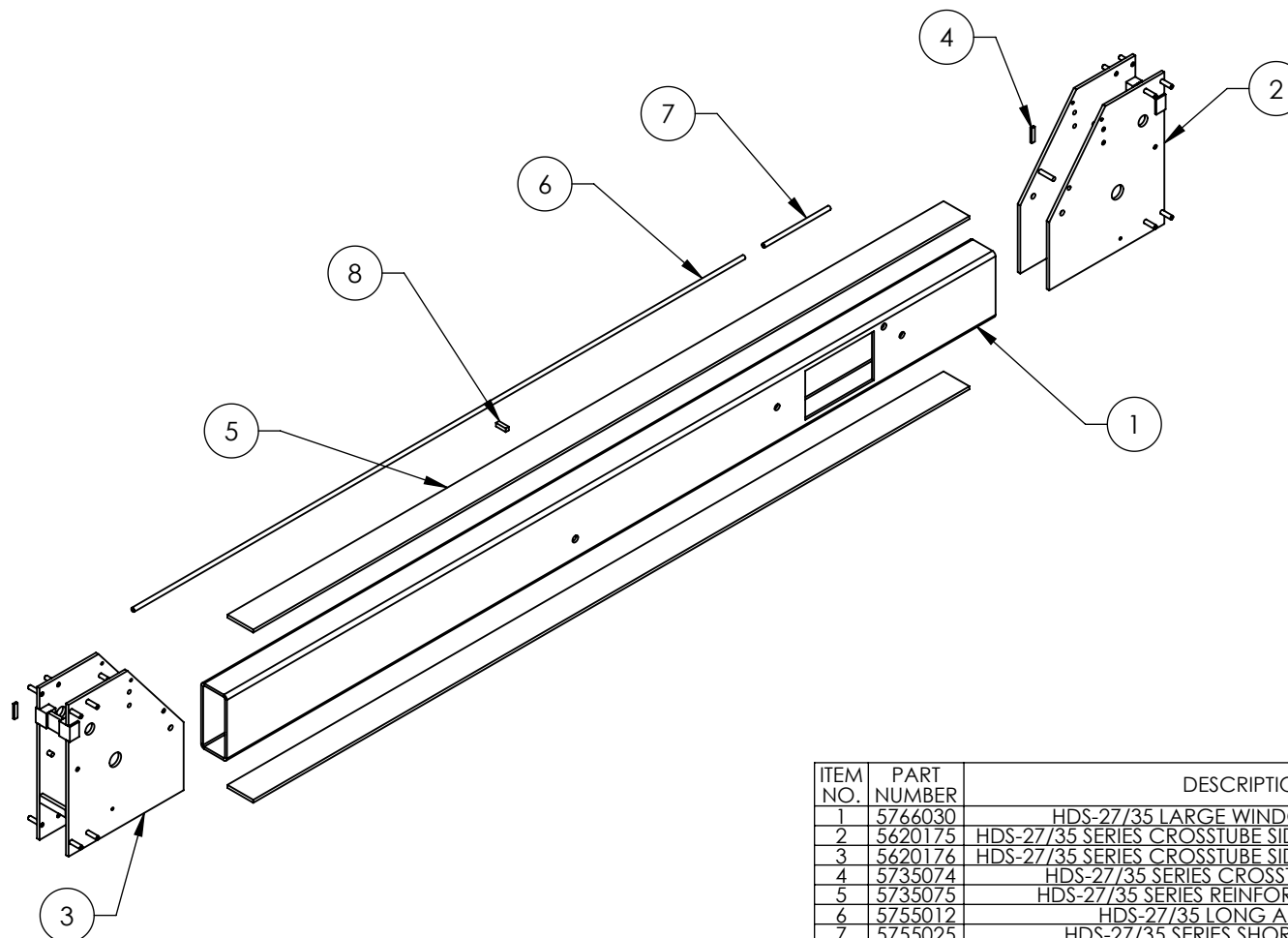
1. BREAK AND DEBURR ALL SHARP EDGES 0.3mm
2. REMOVE ALL WELD SPLATTER
3. PAINT BENDPAK BLUE
4. APPLY #30 GRIT ALUMINUM OXIDE WHEN PAINTING TO TOP ONLY

| ITEM NO | PART NUMBER | DESCRIPTION | QTY | REV |
|---------|-------------|--|-----|-----|
| 1 | 5620207 | HDS-27/27A POWER SIDE RAMP WELDMENT | 1 | F |
| 2 | 5735086 | HD/HDS-27/35 SERIES ROLLING JACK PLATE | 1 | B |
| 3 | 5765020 | HD/HDS-27/35 ROLLING JACK TUBE | 1 | B |

| | | | | | |
|--|--|--|----------------|---|--|
| DO NOT SCALE DRAWING | | NAME | DATE |  BendPak. PRODUCING AUTOMATIC SERVICE EQUIPMENT 1645 LEMONWOOD DR. SANTA PAULA, CA 93060 | |
| DIMENSIONS ARE IN MM TOLERANCES: 0. = ±1.5 0.0 = ±0.5 ANGULAR: 0. = ±2° SURFACE FINISH 1.6 ISO Ra μm FOR MACHINED SURFACES UNLESS OTHERWISE SPECIFIED | | DRAWN | GJZ 10/23/2008 | | |
| | | CHECKED | | | |
| | | THIRD ANGLE PROJECTION | | TITLE: HDS-27 POWER SIDE RAMP WELDMENT | |
| | |  | | SIZE DWG. NO. | |
| Y | | PROPRIETARY AND CONFIDENTIAL THE INFORMATION CONTAINED IN THIS DRAWING IS THE SOLE PROPERTY OF BENDPAK INC. ANY REPRODUCTION IN PART OR AS A WHOLE WITHOUT THE WRITTEN PERMISSION OF BENDPAK INC. IS PROHIBITED. | | A 5600142 | |
| | | | | G | |
| | | | | SCALE: 1:30 | |
| | | | | SHEET 1 OF 2 | |

NEXT ASSEMBLY
5215164

| REVISION | | | | |
|----------|-----------------------|------------|-----------|-------|
| REV | DESCRIPTION | DATE | EDITED BY | ECO# |
| G | UPDATED BOM REVISIONS | 04/21/2014 | TM | 00646 |
| H | UPDATED BOM REVISION | 09/22/2014 | TM | 00666 |
| J | UPDATED BOM REVISION | 01/04/2016 | JM | 00741 |



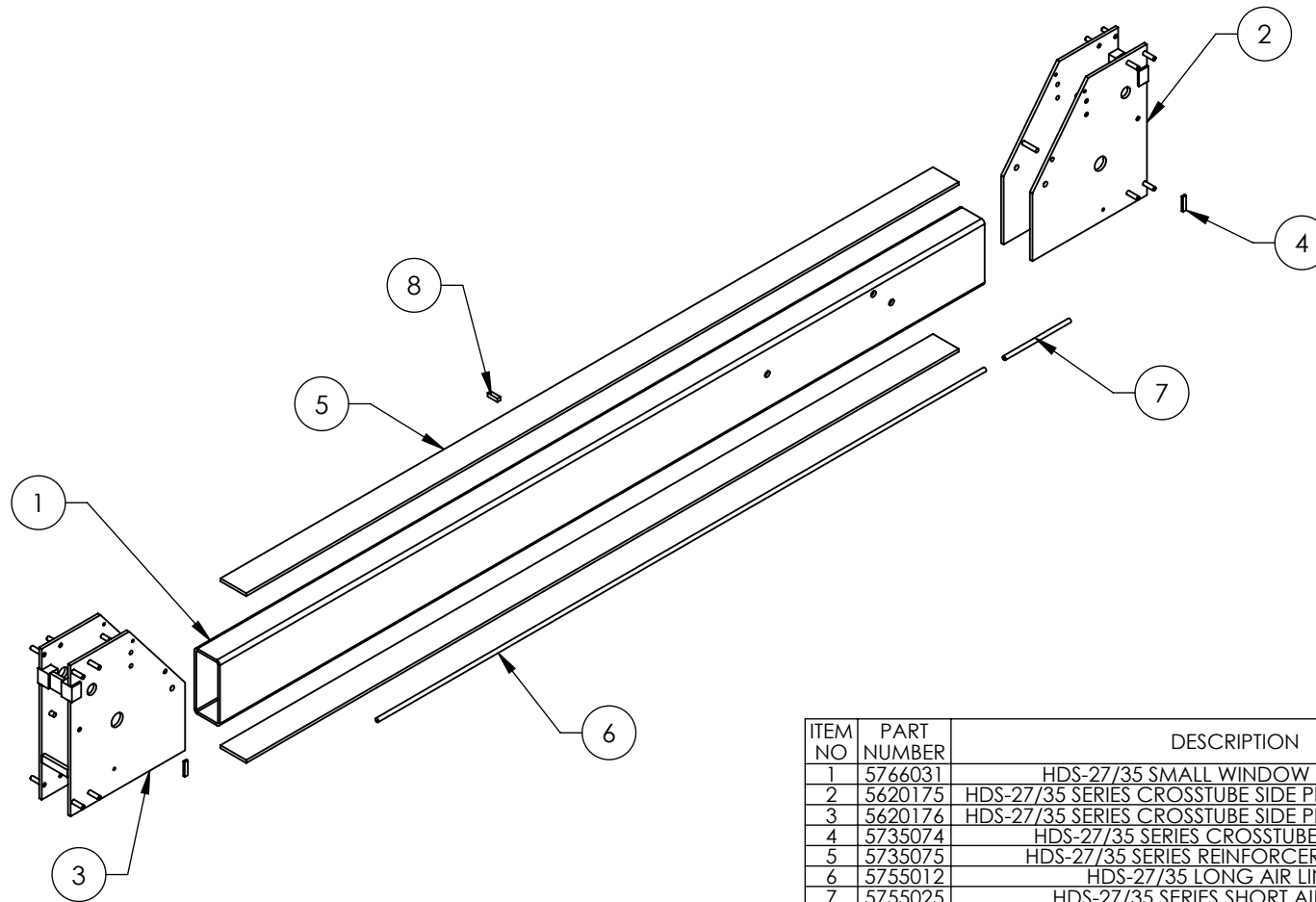
NOTE: UNLESS OTHERWISE SPECIFIED.

1. BREAK AND DEBURR ALL SHARP EDGES 0.3mm
2. REMOVE ALL WELD SPLATTER
3. PAINT BENDPAK BLUE

| ITEM NO. | PART NUMBER | DESCRIPTION | QTY | REV |
|----------|-------------|---|-----|-----|
| 1 | 5766030 | HDS-27/35 LARGE WINDOW CROSSTUBE | 1 | A |
| 2 | 5620175 | HDS-27/35 SERIES CROSSTUBE SIDE PLATE WELDMENT #1 | 1 | H |
| 3 | 5620176 | HDS-27/35 SERIES CROSSTUBE SIDE PLATE WELDMENT #2 | 1 | H |
| 4 | 5735074 | HDS-27/35 SERIES CROSSTUBE SHAFT STOP | 2 | B |
| 5 | 5735075 | HDS-27/35 SERIES REINFORCER, CROSSTUBE | 2 | A |
| 6 | 5755012 | HDS-27/35 LONG AIR LINE PIPE | 1 | B |
| 7 | 5755025 | HDS-27/35 SERIES SHORT AIR LINE PIPE | 1 | B |
| 8 | 5760003 | HD-12/14 RAMP STOP | 1 | D |

| | | | |
|--|--|---|------------|
| DO NOT SCALE DRAWING | | NAME | DATE |
| DRAWN | | GJZ | 09/18/2008 |
| CHECKED | | | |
| THIRD ANGLE PROJECTION | | | |
| DIMENSIONS ARE IN MM TOLERANCES: 0. = ±1.5 0.0 = ±0.5 ANGULAR: 0. = ±2° SURFACE FINISH 1.6 ISO Ra µm FOR MACHINED SURFACES UNLESS OTHERWISE SPECIFIED | | BendPak. 1645 LEMONWOOD DR. SANTA PAULA, CA 93060 TITLE: HDS-27/35 SERIES LARGE WINDOW CROSSTUBE WELDMENT SIZE DWG. NO. A 5600279 REV J | |
| NEXT ASSEMBLY 5215598 5215608 | | PROPRIETARY AND CONFIDENTIAL THE INFORMATION CONTAINED IN THIS DRAWING IS THE SOLE PROPERTY OF BENDPAK INC. ANY REPRODUCTION IN PART OR AS A WHOLE WITHOUT THE WRITTEN PERMISSION OF BENDPAK INC. IS PROHIBITED. SCALE: 1:20 SHEET 1 OF 2 | |


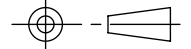
| REVISION | | | | |
|----------|----------------------|------------|-----------|-------|
| REV | DESCRIPTION | DATE | EDITED BY | ECO# |
| G | UPDATED BOM REVISION | 04/21/2014 | TM | 00646 |
| H | UPDATED BOM REVISION | 09/22/2014 | TM | 00666 |
| J | UPDATED BOM REVISION | 01/04/2016 | JM | 00741 |



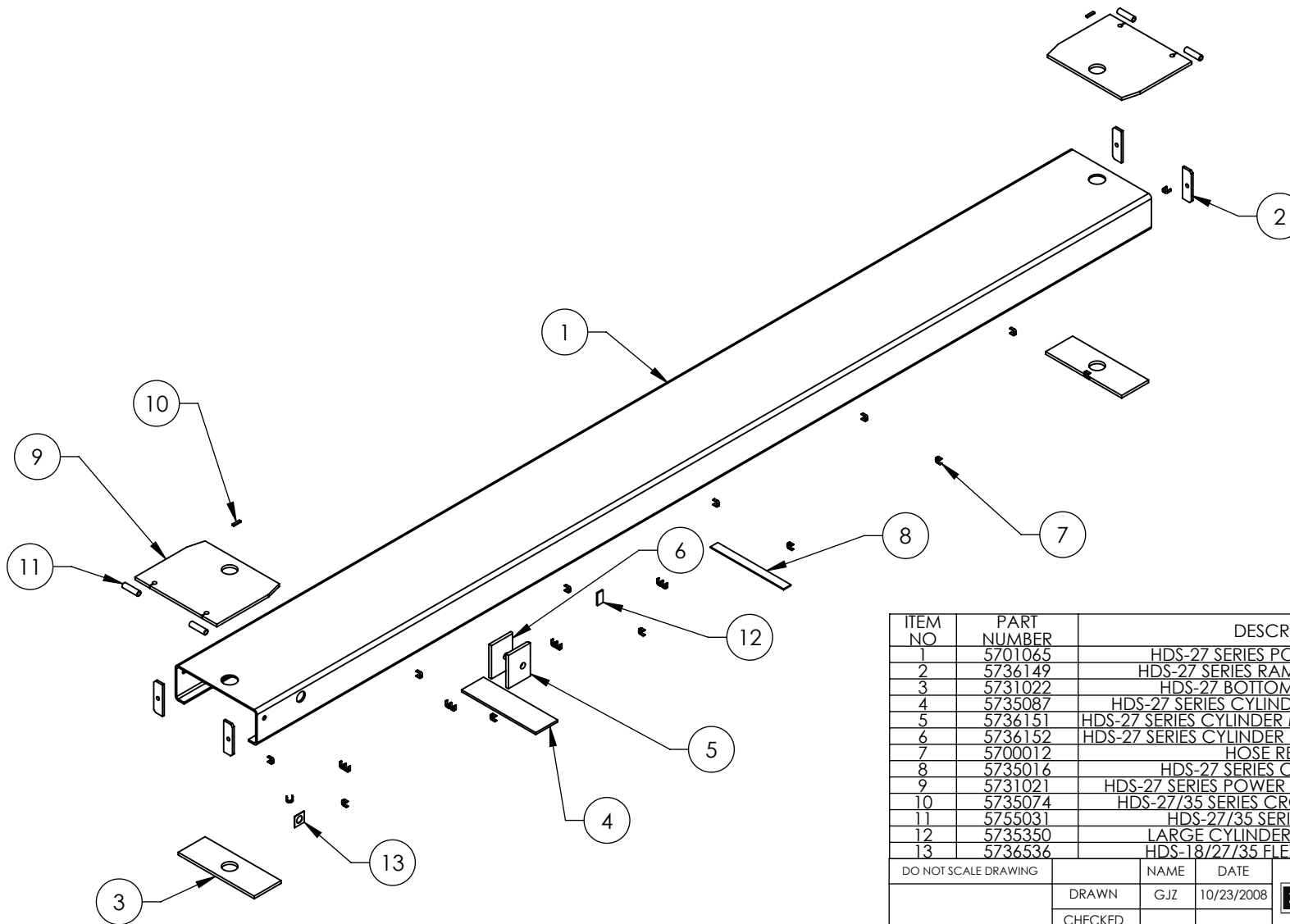
NOTE: UNLESS OTHERWISE SPECIFIED.

1. BREAK AND DEBURR ALL SHARP EDGES 0.3mm
2. REMOVE ALL WELD SPLATTER
3. PAINT BENDPAK BLUE

| ITEM NO | PART NUMBER | DESCRIPTION | QTY | REV |
|---------|-------------|---|-----|-----|
| 1 | 5766031 | HDS-27/35 SMALL WINDOW CROSSTUBE | 1 | A |
| 2 | 5620175 | HDS-27/35 SERIES CROSSTUBE SIDE PLATE WELDMENT #1 | 1 | H |
| 3 | 5620176 | HDS-27/35 SERIES CROSSTUBE SIDE PLATE WELDMENT #2 | 1 | H |
| 4 | 5735074 | HDS-27/35 SERIES CROSSTUBE SHAFT STOP | 2 | B |
| 5 | 5735075 | HDS-27/35 SERIES REINFORCER, CROSSTUBE | 2 | A |
| 6 | 5755012 | HDS-27/35 LONG AIR LINE PIPE | 1 | B |
| 7 | 5755025 | HDS-27/35 SERIES SHORT AIR LINE PIPE | 1 | B |
| 8 | 5760003 | HD-12/14 RAMP STOP | 1 | D |

| | | | | | | |
|---|--|---|------------------|---|---|------------|
| DO NOT SCALE DRAWING | | NAME | DATE | <div> BendPak. 1645 LEMONWOOD DR. SANTA PAULA, CA 93060</div> | | |
| DIMENSIONS ARE IN MM TOLERANCES: 0. = ±1.5 0.0 = ±0.5 ANGULAR: 0. = ±2° | | DRAWN | GJZ | | | 09/18/2008 |
| | | CHECKED | | | | |
| SURFACE FINISH 1.6 ISO Ra µm FOR MACHINED SURFACES UNLESS OTHERWISE SPECIFIED | | THIRD ANGLE PROJECTION | | | TITLE: HDS-27/35 SERIES SMALL WINDOW CROSSTUBE WELDMENT | |
| | |  | | | | |
| | | PROPRIETARY AND CONFIDENTIAL THE INFORMATION CONTAINED IN THIS DRAWING IS THE SOLE PROPERTY OF BENDPAK INC. ANY REPRODUCTION IN PART OR AS A WHOLE WITHOUT THE WRITTEN PERMISSION OF BENDPAK INC. IS PROHIBITED. | | | SIZE | DWG. NO. |
| | | | A 5600293 | | J | |
| SCALE: 1:20 | | | | SHEET 1 OF 2 | | |

| REVISION | | | | |
|----------|--|------------|-----------|-------|
| REV | DESCRIPTION | DATE | EDITED BY | ECO# |
| D | ADDED 5736536, UPDATED BOM REVISION | 12/06/2012 | TM | 00545 |
| E | ADDED (1) 5700012 | 05/15/2013 | TM | 00593 |
| F | ADDED 6mm WELD pg 4, UPDATED BOM REVISIONS AND NEXT ASSEMBLY | 12/08/2015 | JM | 00724 |



| ITEM NO | PART NUMBER | DESCRIPTION | QTY | REV |
|---------|-------------|--|-----|-----|
| 1 | 5701065 | HDS-27 SERIES POWER SIDE RAMP | 1 | C |
| 2 | 5736149 | HDS-27 SERIES RAMP SUPPORT PLATE | 4 | A |
| 3 | 5731022 | HDS-27 BOTTOM SHEAVE PLATE | 2 | A |
| 4 | 5735087 | HDS-27 SERIES CYLINDER MOUNTING PLATE | 1 | B |
| 5 | 5736151 | HDS-27 SERIES CYLINDER MOUNTING BLOCK (R.H.) | 1 | A |
| 6 | 5736152 | HDS-27 SERIES CYLINDER MOUNTING BLOCK (L.H.) | 1 | A |
| 7 | 5700012 | HOSE RETAINER | 22 | B |
| 8 | 5735016 | HDS-27 SERIES CYLINDER STRAP | 1 | B |
| 9 | 5731021 | HDS-27 SERIES POWER SIDE RAMP END PLATE | 2 | A |
| 10 | 5735074 | HDS-27/35 SERIES CROSSTUBE SHAFT STOP | 2 | B |
| 11 | 5755031 | HDS-27/35 SERIES HINGE TUBE | 4 | B |
| 12 | 5735350 | LARGE CYLINDER ALIGNMENT KEY | 1 | A |
| 13 | 5736536 | HDS-18/27/35 FLEX TUBE NUT PLATE | 1 | A |

| | | | |
|--|--|--|------------|
| DO NOT SCALE DRAWING | | NAME | DATE |
| DRAWN | | GJZ | 10/23/2008 |
| CHECKED | | | |
| THIRD ANGLE PROJECTION | | | |
| DIMENSIONS ARE IN MM TOLERANCES: 0. = ±1.5 0.0 = ±0.5 ANGULAR: 0. = ±2° SURFACE FINISH 1.6 ISO Ra µm FOR MACHINED SURFACES UNLESS OTHERWISE SPECIFIED | | BendPak. 1645 LEMONWOOD DR. SANTA PAULA, CA 93060 <small>HYDRAULIC AUTOMATIC BRIDGE BOLTING</small> | |
| TITLE: HDS-27/27A POWER SIDE RAMP WELDMENT | | SIZE DWG. NO. REV A 5620207 F | |
| SCALE: 1:30 | | SHEET 1 OF 4 | |

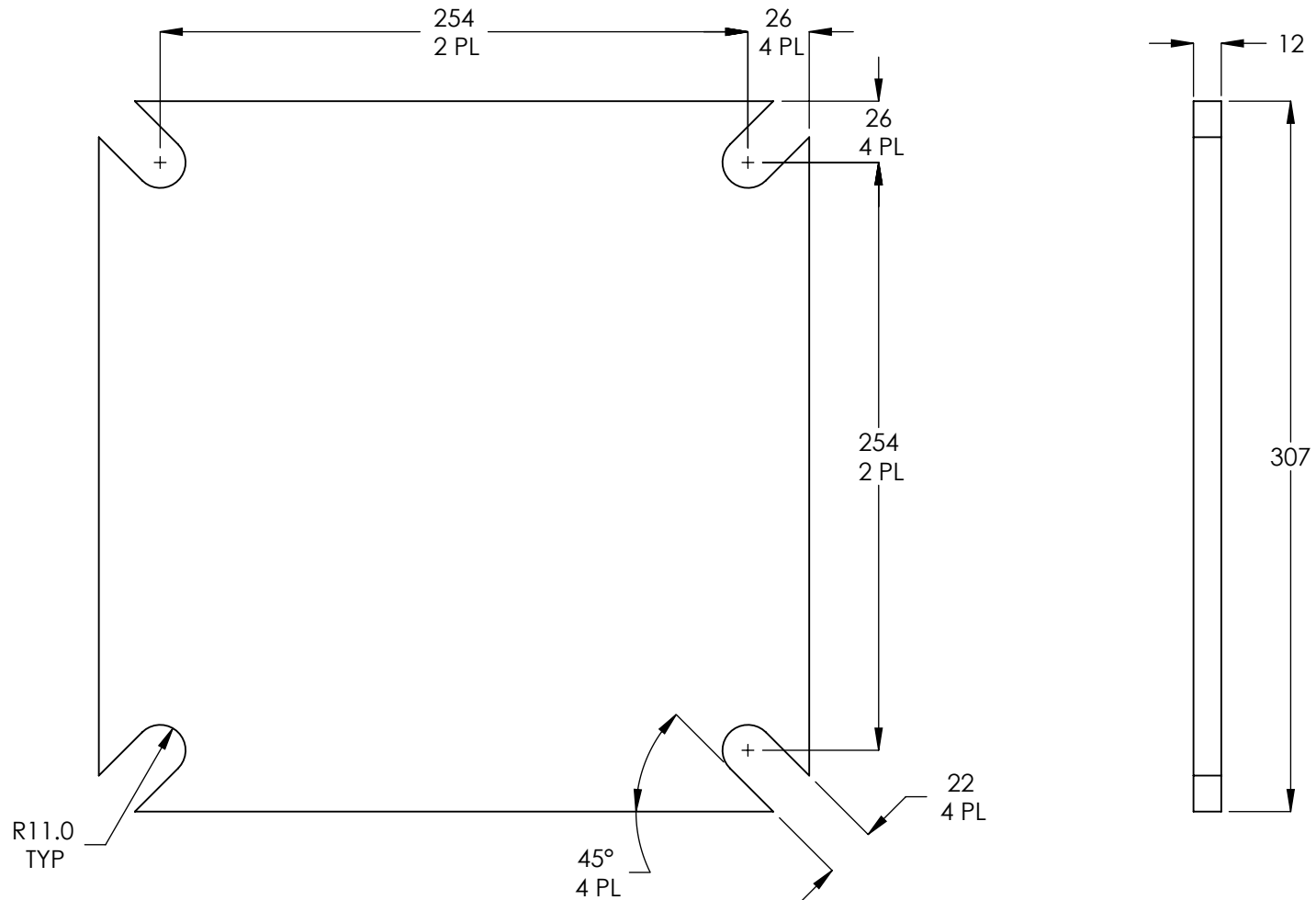
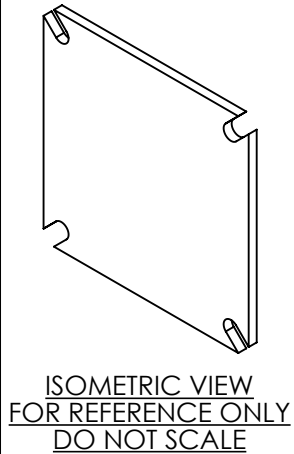
NOTE: UNLESS OTHERWISE SPECIFIED.

- BREAK AND DEBURR ALL SHARP EDGES 0.3mm
- REMOVE ALL WELD SPLATTER

NEXT ASSEMBLY
5600142

PROPRIETARY AND CONFIDENTIAL
 THE INFORMATION CONTAINED IN THIS DRAWING IS
 THE SOLE PROPERTY OF BENDPAK INC. ANY
 REPRODUCTION IN PART OR AS A WHOLE WITHOUT
 THE WRITTEN PERMISSION OF BENDPAK INC. IS
 PROHIBITED.

| REVISION | | DATE | EDITED BY | ECO# |
|----------|--|------------|-----------|-------|
| REV | DESCRIPTION | | | |
| A | DERIVED FROM H-111, PRODUCTION RELEASE | 09/15/2008 | GJZ | 00241 |
| A-001 | UPDATED NEXT ASSEMBLY | 07/30/2012 | TM | 00535 |
| A-002 | UPDATED NEXT ASSEMBLIES | 06/04/2015 | TM | 00683 |
| B | UPDATED TITLE TO REFLECT WHERE USED | 09/17/2015 | TM | 00724 |



NOTE: UNLESS OTHERWISE SPECIFIED.

- BREAK AND DEBURR ALL SHARP EDGES 0.3mm
- MATERIAL:** HR ASTM A36 OR Q235 GB/T 700
- FLAME CUT PERMISSABLE

| NEXT ASSEMBLY |
|---------------|
| 5600350 |
| 5600351 |
| 5600697 |
| 5600698 |
| 5600978 |
| 5600980 |

| | | | | | |
|---|--|---|----------------|---|-----|
| DO NOT SCALE DRAWING | | NAME | DATE | 1645 LEMONWOOD DR. SANTA PAULA, CA 93060 | |
| DIMENSIONS ARE IN MM TOLERANCES: MACHINE TO 0. = ±1.5 0.0 = ±0.5 0.00 = ±0.13 | | DRAWN | GJZ 09/15/2008 | | |
| ANGULAR: MACHINE TO 0. = ±1/2° | | CHECKED | | TITLE: HDS-27/35 SERIES BASE PLATE | |
| SURFACE FINISH 1.6 ISO Ra μm FOR MACHINED SURFACES UNLESS OTHERWISE SPECIFIED | | THIRD ANGLE PROJECTION | | SIZE DWG. NO. | REV |
| | | | | A 5730026 | B |
| | | <small>PROPRIETARY AND CONFIDENTIAL THE INFORMATION CONTAINED IN THIS DRAWING IS THE SOLE PROPERTY OF BENDPAK INC. ANY REPRODUCTION IN PART OR AS A WHOLE WITHOUT THE WRITTEN PERMISSION OF BENDPAK INC. IS PROHIBITED.</small> | | SCALE: 1:3 | |
| | | | | SHEET 1 OF 1 | |

PART SPECIFICATION FORM

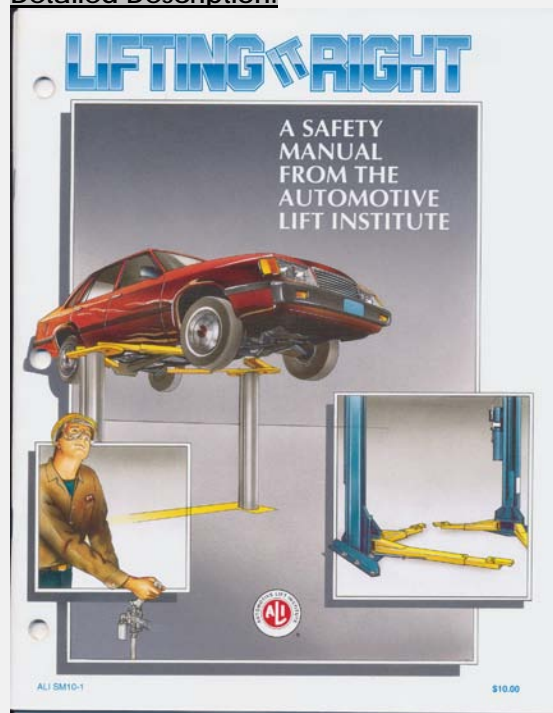
| | |
|-------------------------|-----------------------------|
| BENDPAK Number: | 5900147 |
| MRP Description: | SAFETY MANUAL ALI / SM 93-1 |
| Date: | 12/28/2010 |
| ECO : | 00431 |

1. Engineering Specification

Application:

ALI SAFETY MANUAL

Detailed Description:



2. Vendor Information

| Approved Vendor | Vendor Part # | Contact # | Preferred Vendor |
|-----------------|---------------|-----------|------------------|
| 1) | | | |

PART SPECIFICATION FORM

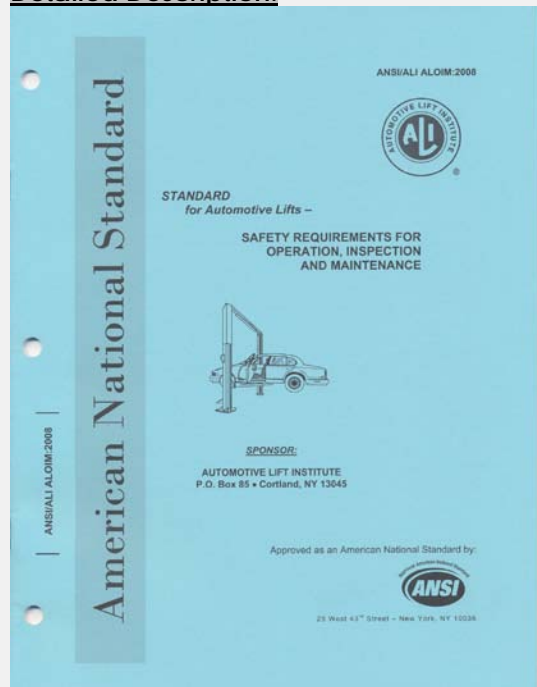
| | |
|-------------------------|--|
| BENDPAK Number: | 5900152 |
| MRP Description: | ALIGN OIM OPERATION INSPECTION & MAINTENANCE |
| Date: | 12/28/2010 |
| ECO : | 00431 |

1. Engineering Specification

Application:

ALI OPERATION INSPECTION & MAINTENANCE MANUAL

Detailed Description:



2. Vendor Information

| Approved Vendor | Vendor Part # | Contact # | Preferred Vendor |
|-----------------|---------------|-----------|------------------|
| 1) | | | |

PART SPECIFICATION FORM

| | |
|-------------------------|--------------------------------------|
| BENDPAK Number: | 5900160 |
| MRP Description: | HDS TRUCK SERIES INSTALLATION MANUAL |
| Date: | 07/12/2013 |
| ECO : | 00593 |

1. Engineering Specification

Application:

INSTALLATION MANUAL

Detailed Description:

WARNING

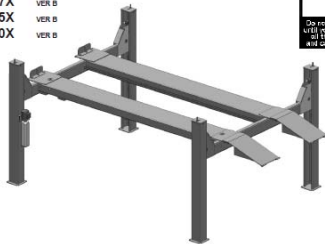
IMPORTANT SAFETY INSTRUCTIONS
SAVE THESE INSTRUCTIONS
PLEASE READ THE ENTIRE CONTENTS OF THIS MANUAL PRIOR TO INSTALLATION AND OPERATION. BY PROCEEDING WITH LIFT INSTALLATION AND OPERATION YOU AGREE THAT YOU FULLY UNDERSTAND AND COMPREHEND THE FULL CONTENTS OF THIS MANUAL. FORWARD THIS MANUAL TO ALL OPERATORS. FAILURE TO OPERATE THIS EQUIPMENT AS DIRECTED MAY CAUSE INJURY OR DEATH.
Manual REV F 06-12-13
pnh 5000100

INSTALLATION AND OPERATION MANUAL

**SUPER-DUTY
FOUR-POST LIFTS**

Models:

HDS-18
HDS-27 / HDS-27X VER B
HDS-35 / HDS-35X VER B
HDS-40 / HDS-40X VER B



READ FIRST



DO NOT OPERATE THIS EQUIPMENT
UNTIL YOU HAVE READ AND UNDERSTOOD
ALL THE SAFETY INSTRUCTIONS
AND CAUTIONS IN THIS MANUAL.

RECEIVING

The shipment should be thoroughly inspected as soon as it is received. The signed Bill of Lading is acknowledgement by the shipping carrier as receipt of this product as listed in your invoice as being in a good condition of shipment. If any of these goods listed on this Bill of Lading are missing or damaged, do not accept goods until the shipping carrier makes a notation on the freight bill of the missing or damaged goods. Do this for your own protection.

BE SAFE

Your new lift was designed and built with safety in mind. However, your overall safety can be increased with proper training and thoughtful operation on the part of the operator. DO NOT operate or repair this equipment without reading this manual and the important safety instructions shown inside. Keep this operation manual near the lift at all times. Make sure that **ALL USERS** read and understand this manual.

2. Vendor Information

| Approved Vendor | Vendor Part # | Contact # | Preferred Vendor |
|-----------------|---------------|-----------|------------------|
| 1) | | | |

PART SPECIFICATION FORM

| | |
|-------------------------|--------------------|
| BENDPAK Number: | 5905103 |
| MRP Description: | WARNING ALI/WL 200 |
| Date: | 05/06/2013 |
| ECO : | 00593 |

1. Engineering Specification

Application:

ALI 4 POST SAFETY STICKER KIT

Detailed Description:



SIZE: 11" L x 8.5" W (279mm x 216mm)

2. Vendor Information

| Approved Vendor | Vendor Part # | Contact # | Preferred Vendor |
|-----------------|---------------|-----------|------------------|
| 1) | | | |

PART SPECIFICATION FORM

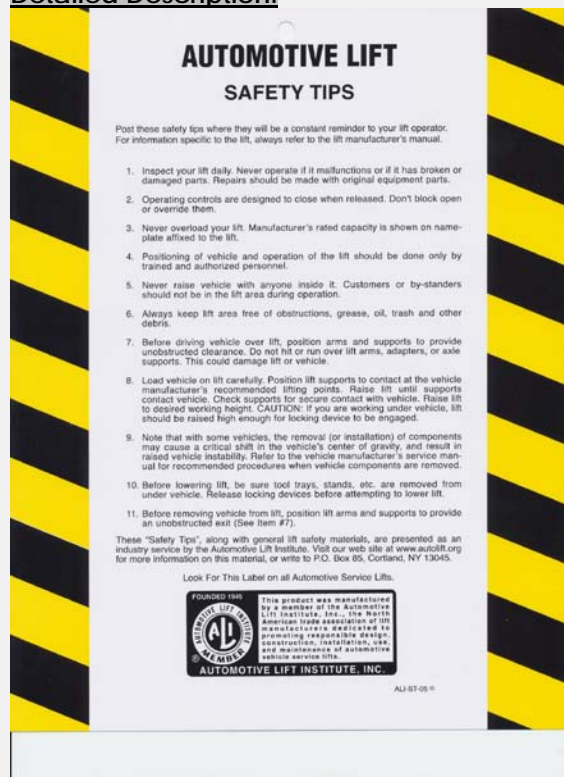
| | |
|-------------------------|----------------------------|
| BENDPAK Number: | 5905151 |
| MRP Description: | SAFETY TIPS CARD ALI-ST 90 |
| Date: | 12/28/2010 |
| ECO : | 00431 |

1. Engineering Specification

Application:

ALI SAFETY TIPS

Detailed Description:



2. Vendor Information

| Approved Vendor | Vendor Part # | Contact # | Preferred Vendor |
|-----------------|---------------|-----------|------------------|
| 1) | | | |

PART SPECIFICATION FORM

| | |
|-------------------------|----------------------------------|
| BENDPAK Number: | 5905311 |
| MRP Description: | BENDPAK LABEL; 4 x 38" WHITE INK |
| Date: | 05/13/2015 |
| ECO : | 00689 |

1. Engineering Specification

Application:

BENDPAK LABEL

Detailed Description:



SIZE: 38" L x 4.25" W (965mm x 108mm)

- Material: Yellow Represents Clear Adhesive PET
- Size: 4.25"W x 38"H
- Thickness: 4 Mil
- Finish: Polished
- Ink: U.V. protected, Opaque White
- Print Process: Silk Screen, 85 line-screen (Opaque White ink, clear adhesive PET will fill in blank areas.)
- Lamination: Clear-gloss over-laminate for abrasion, chemical, and ultra violet protection

2. Vendor Information

| Approved Vendor | Vendor Part # | Contact # | Preferred Vendor |
|-----------------|---------------|-----------|------------------|
| 1) | | | |

B

E

N

D

P

A

K

BendPak

ABOVE-GROUND LIFTS



BendPak®
PROVIDING AUTOMOTIVE SERVICE SOLUTIONS



1645 Lemonwood Drive
Santa Paula, CA 93060
U.S.A.
(805) 933-9970
www.bendpak.com

P/N 5905311

PART SPECIFICATION FORM

| | |
|------------------|--------------------|
| BENDPAK Number: | 5905407 |
| MRP Description: | MAX CAP DANGER 27K |
| Date: | 05/08/2013 |
| ECO : | 00593 |

1. Engineering Specification

Application:

LIFT CAPACITY STICKER

Detailed Description:



P/N 5905407

SIZE: 5" L x 4" W (127mm x 100mm)

2. Vendor Information

| Approved Vendor | Vendor Part # | Contact # | Preferred Vendor |
|-----------------|---------------|-----------|------------------|
| 1) | | | |

DANGER

THE MAXIMUM LIFTING CAPACITY FOR THIS LIFT IS DESCRIBED BELOW

Maximum Lifting Capacity

27,000 lbs. / 12,247 kg

Max. Lifting Cap. / Front of Lift Center

13,500 lbs. / 6124 kg

Max. Lifting Cap. / Rear of Lift Center

13,500 lbs. / 6124 kg

Exceeding the weight capacity of this lift can damage lift and/or property and may cause personal harm, injury or death to operators and/or bystanders. All vehicles MUST be positioned on lift with CENTER OF GRAVITY midway between adapters and/or centered on runways. Damage to lift due to overloading or misuse IS NOT covered under warranty.

PART SPECIFICATION FORM

| | |
|-------------------------|--------------------|
| BENDPAK Number: | 5905465 |
| MRP Description: | MANUFACTURER LABEL |
| Date: | 05/07/2013 |
| ECO : | 00593 |

1. Engineering Specification

Application:

MANUFACTURER LABEL

Detailed Description:

MFD. BY BENDPAK INC.

LIFT TYPE: SURFACE MOUNT CAPACITY: MED/HVY DTY

POWER: ELECTRIC/HYDRAULIC ANCHORS: AS EQUIPPED

INSTALLATION - SEE OWNERS GUIDE OR CONTACT FACTORY

SHIPPING DAMAGE CLAIMS

WHEN THIS EQUIPMENT IS SHIPPED, TITLE PASSES TO THE PURCHASER UPON RECEIPT FROM THE CARRIER. CONSEQUENTLY, CLAIMS FOR THE MATERIAL DAMAGED IN SHIPMENT MUST BE MADE BY THE PURCHASER AGAINST THE TRANSPORTATION COMPANY AT THE TIME SHIPMENT IS RECEIVED.

PLEASE READ ALL OPERATORS/USERS MANUAL(S) PRIOR TO INSTALLATION AND OPERATION. UNDERSTAND AND COMPREHEND THE FULL CONTENTS OF EACH MANUAL(S) PRIOR TO INSTALLATION AND OPERATION. DELIVER THE MANUAL(S) TO ALL OPERATORS. FAILURE TO OPERATE THIS EQUIPMENT AS DIRECTED MAY CAUSE INJURY OR DEATH.

IMPORTANT NOTE:

BENDPAK LIFTS ARE SUPPLIED WITH CONCRETE FASTENERS MEETING THE CRITERIA AS PRESCRIBED BY ASTM E488 - 96(2003). LIFT BUYERS ARE RESPONSIBLE FOR ANY SPECIAL REGIONAL STRUCTURAL AND/OR SEISMIC ANCHORING REQUIREMENTS SPECIFIED BY ANY OTHER AGENCIES AND/OR CODES SUCH AS THE UNIFORM BUILDING CODE (UBC) AND/OR INTERNATIONAL BUILDING CODE (IBC).



INTERNAL BAR CODE - FOR FACTORY AUDIT ONLY 34086

| | | | | |
|-----|-------|--------|--------|--------------|
| BPK | STYOT | P20KVR | X18576 | HVY DTY/ GVR |
| | | | | 832 |

THE MANUFACTURE, USE, SALE OR IMPORT OF THIS PRODUCT MAY BE SUBJECT TO ONE OR MORE UNITED STATES PATENTS, OR PENDING APPLICATIONS, OWNED BY BENDPAK, INC.

ENGINEERED BY BENDPAK INC USA

MADE IN CHINA

SIZE: 5.125" L x 5.125" W (130mm x 130mm)

2. Vendor Information

| Approved Vendor | Vendor Part # | Contact # | Preferred Vendor |
|-----------------|---------------|-----------|------------------|
| 1) | | | |

MFD. BY BENDPAK INC.

LIFT TYPE: SURFACE MOUNT

CAPACITY: MED/HVY DTY

POWER: ELECTRIC/HYDRAULIC

ANCHORS: AS EQUIPPED

INSTALLATION - SEE OWNERS GUIDE OR CONTACT FACTORY

SHIPPING DAMAGE CLAIMS

WHEN THIS EQUIPMENT IS SHIPPED, TITLE PASSES TO THE PURCHASER UPON RECEIPT FROM THE CARRIER. CONSEQUENTLY, CLAIMS FOR THE MATERIAL DAMAGED IN SHIPMENT MUST BE MADE BY THE PURCHASER AGAINST THE TRANSPORTATION COMPANY AT THE TIME SHIPMENT IS RECEIVED.

PLEASE READ ALL OPERATORS/USERS MANUAL(S) PRIOR TO INSTALLATION AND OPERATION. UNDERSTAND AND COMPREHEND THE FULL CONTENTS OF EACH MANUAL(S) PRIOR TO INSTALLATION AND OPERATION. DELIVER THE MANUAL(S) TO ALL OPERATORS. FAILURE TO OPERATE THIS EQUIPMENT AS DIRECTED MAY CAUSE INJURY OR DEATH.

IMPORTANT NOTE:

BENDPAK LIFTS ARE SUPPLIED WITH CONCRETE FASTENERS MEETING THE CRITERIA AS PRESCRIBED BY ASTM E488 - 96(2003). LIFT BUYERS ARE RESPONSIBLE FOR ANY SPECIAL REGIONAL STRUCTURAL AND/OR SEISMIC ANCHORING REQUIREMENTS SPECIFIED BY ANY OTHER AGENCIES AND/OR CODES SUCH AS THE UNIFORM BUILDING CODE (UBC) AND/OR INTERNATIONAL BUILDING CODE (IBC).



INTERNAL BAR CODE - FOR FACTORY AUDIT ONLY 34086

BPK

STYOT

P20KVR

X18576

**HVY DTY/ GVR
832**

THE MANUFACTURE, USE, SALE OR IMPORT OF THIS PRODUCT MAY BE SUBJECT TO ONE OR MORE UNITED STATES PATENTS, OR PENDING APPLICATIONS, OWNED BY BENDPAK, INC.

ENGINEERED BY BENDPAK INC USA

MADE IN CHINA

PART SPECIFICATION FORM

| | |
|------------------|---------------------|
| BENDPAK Number: | 5905556 |
| MRP Description: | 4-POST SAFETY DECAL |
| Date: | 05/06/2013 |
| ECO : | 00593 |

1. Engineering Specification

Application:

4-POST SAFETY DECAL

Detailed Description:



SIZE: 23" L x 4" W (584mm x 100mm)

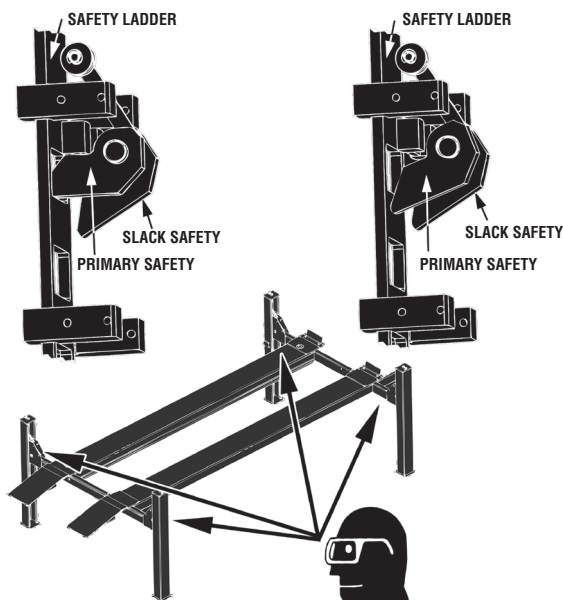
2. Vendor Information

| Approved Vendor | Vendor Part # | Contact # | Preferred Vendor |
|-----------------|---------------|-----------|------------------|
| 1) | | | |

DANGER

**SAFETY LOCKS ENGAGED
– OK TO PROCEED –**

**SAFETY LOCK NOT ENGAGED
– REMAIN CLEAR –**



VISUALLY CONFIRM THAT ALL PRIMARY SAFETY LOCKS ARE ENGAGED BEFORE ENTERING WORK AREA.

Suspension components used on this lift are intended to raise and lower lift only and are NOT meant to be load-holding devices. Remain clear of elevated lift unless visual confirmation is made that all primary safety locks are fully engaged and the lift is LOWERED onto the safety locks. Refer to installation/operation manual for proper safety lock procedures and/or further instruction.

WARNING

WIRE ROPE INSPECTION AND MAINTENANCE

- Lifting cables should be replaced every (3) three years or when visible signs of damage are apparent. DO NOT USE LIFT WITH DEFECTIVE OR WORN CABLES.
- Wire rope should be maintained in a well-lubricated condition at all times. Wire rope is only fully protected when each wire strand is lubricated both internal and external. Excessive wear will shorten the life of the wire rope. The factory suggests wire rope lubricant that penetrates to the core of the rope and provides long-term lubrication between each individual strand. In order to make sure that the inner layers of the rope remain well lubricated, lubrication should be carried out at intervals not exceeding three (3) months during operation.
- All sheaves and guide rollers in contact with the moving wire rope should be given regular visual checks for surface wear and lubricated to make sure that they run freely. This operation should be carried out at appropriate intervals generally not exceeding three (3) months during operation. For all sheave axles, the factory recommends standard wheel bearing grease. For all sheaves and/or guide rollers, the factory recommends 90-WT gear oil or similar heavy lubricant applied by any method including pump/spray dispensing, brush, hand and/or swabbing.

Failure to read, understand and follow these instructions may cause death or serious injury. Read and understand these instructions before using lift.

IMPORTANT OPERATION / MAINTENANCE INSTRUCTIONS - PLEASE READ

TO RAISE LIFT

- ✓ Position vehicle tires at the center of each runway.
- ✓ Set parking brake or use wheel chock to hold vehicle in position.
- ✓ Before raising vehicle, be sure all personnel are clear of lift and surrounding area. Pay careful attention to overhead clearances.
- ✓ Raise lift to desired height by pressing push button on power unit.
- ✓ Maintain visual contact with vehicle and surrounding area at all times while lowering lift.
- ✓ **STOP IMMEDIATELY** if load shifts or becomes unlevel.
- ✓ After vehicle is raised to desired height, lower lift onto the nearest safety lock. Do not allow cables to become excessively slack.
- ✓ **ALWAYS INSURE ALL PRIMARY SAFETY LOCKS ARE ENGAGED** before entering work area.

TO LOWER LIFT

- ✓ Before lowering vehicle, be sure all personnel, tools and equipment are clear of lift and surrounding area.
- ✓ Raise lift by pressing **RAISE BUTTON** on power unit. Elevate lift at least two inches to allow adequate clearance for locks to clear.
- ✓ Press push button **AIR SAFETY VALVE** and **HOLD**.
- ✓ Lower vehicle by pressing power unit lowering handle until lift has descended completely.
- ✓ When lowering lift **PAY CAREFUL ATTENTION** that all personnel and objects are kept clear.
- ✓ **ALWAYS** keep a visual line of site on lift **AT ALL TIMES**.
- ✓ **ALWAYS** make sure that **ALL LOCKS** are disengaged. If one of the locks inadvertently engages on descent, lift and/or vehicle may disrupt causing personal injury or death.

REQUIRED MONTHLY MAINTENANCE

- ✓ **ALWAYS** consult operation manual for factory recommended maintenance.
- ✓ Adjust lift cables to ensure lift raises level and safety locks engage simultaneously.
- ✓ Check all chain/cable connections, bolts and pins to insure proper mounting.
- ✓ Visually inspect safety locks for proper operation.
- ✓ Visually inspect concrete floor. **DO NOT USE LIFT** if concrete foundation shows signs of deterioration.
- ✓ Inspect all anchor bolts and retighten if necessary.
- ✓ Check columns for squareness and plumb.
- ✓ Inspect all bolts and/or fasteners making sure they are properly secured.
- ✓ Make a visual inspection of **ALL MOVING PARTS** and check for excessive signs of wear.
- ✓ Replace **ALL FAULTY PARTS** before lift is put back into operation.

WARNING

1. **WARNING:** If cement anchor bolts are loose, or any component of the lift is found to be defective, **DO NOT USE LIFT!**
2. Never operate the lift with any person or equipment below.
3. Never exceed rated capacity.
4. Always insure safety locks are engaged before any attempt is made to work on or near vehicle.
5. Never leave lift in an elevated position unless the safety locks are engaged.
6. Do not permit electric motor to get wet! Motor damage caused by dampness is not covered under warranty.

PART SPECIFICATION FORM

| | |
|-------------------------|--------------------|
| BENDPAK Number: | 5905940 |
| MRP Description: | PRODUCT DATA LABEL |
| Date: | 05/06/2013 |
| ECO : | 00593 |

1. Engineering Specification

Application:

PRODUCT DATA LABEL

Detailed Description:



SANTA PAULA, CA USA
 WWW.BENDPAK.COM

LIFT TYPE: SURFACE MOUNT CAP: MED/HVY DTY MFG. BPK SEE DATA PLATE FOR PRODUCT DETAILS
 POWER: ELECTRIC/HYDRAULIC INSTALLATION - SEE OWNERS GUIDE OR CONTACT FACTORY

SAFETY INSTRUCTIONS: IF ATTACHMENTS, ACCESSORIES OR CONFIGURATION MODIFYING COMPONENTS THAT ARE LOCATED IN THE LOAD PATH, AFFECT OPERATION OF THE LIFT, AFFECT THE LIFT ELECTRICAL LISTING OR AFFECT INTENDED VEHICLE ACCOMMODATION ARE USED ON THIS LIFT AND, IF THEY ARE NOT CERTIFIED FOR USE ON THIS LIFT, THEN THE CERTIFICATION OF THIS LIFT SHALL BECOME NULL AND VOID. CONTACT THE PARTICIPANT FOR INFORMATION PERTAINING TO CERTIFIED ATTACHMENTS, ACCESSORIES OR CONFIGURATION MODIFYING COMPONENTS.

BENDPAK LIFTS ARE SUPPLIED WITH CONCRETE FASTENERS MEETING THE CRITERIA AS PRESCRIBED BY ASTM E488 - 96(2003). LIFT BUYERS ARE RESPONSIBLE FOR ANY SPECIAL REGIONAL STRUCTURAL AND/OR SEISMIC ANCHORING REQUIREMENTS SPECIFIED BY ANY OTHER AGENCIES AND/OR CODES SUCH AS THE UNIFORM BUILDING CODE (UBC) AND/OR INTERNATIONAL BUILDING CODE (IBC).

THE MANUFACTURE, USE, SALE OR IMPORT OF THIS PRODUCT MAY BE SUBJECT TO ONE OR MORE UNITED STATES PATENTS, OR PENDING APPLICATIONS, OWNED BY BENDPAK, INC.
 DO NOT REMOVE ENGINEERED BY BENDPAK INC. USA MADE IN CHINA

SIZE: 2.3" L x 4.5" W (58mm x 114mm)

2. Vendor Information

| Approved Vendor | Vendor Part # | Contact # | Preferred Vendor |
|-----------------|---------------|-----------|------------------|
| 1) | | | |



SANTA PAULA, CA USA

WWW.BENDPAK.COM

PN 5905940

LIFT TYPE: SURFACE MOUNT CAP: MED/HVY DTY MFG. BPK SEE DATA PLATE FOR PRODUCT DETAILS

POWER: ELECTRIC/HYDRAULIC INSTALLATION - SEE OWNERS GUIDE OR CONTACT FACTORY

SAFETY INSTRUCTIONS: IF ATTACHMENTS, ACCESSORIES OR CONFIGURATION MODIFYING COMPONENTS THAT ARE LOCATED IN THE LOAD PATH, AFFECT OPERATION OF THE LIFT, AFFECT THE LIFT ELECTRICAL LISTING OR AFFECT INTENDED VEHICLE ACCOMMODATION ARE USED ON THIS LIFT AND, IF THEY ARE NOT CERTIFIED FOR USE ON THIS LIFT, THEN THE CERTIFICATION OF THIS LIFT SHALL BECOME NULL AND VOID. CONTACT THE PARTICIPANT FOR INFORMATION PERTAINING TO CERTIFIED ATTACHMENTS, ACCESSORIES OR CONFIGURATION MODIFYING COMPONENTS.

BENDPAK LIFTS ARE SUPPLIED WITH CONCRETE FASTENERS MEETING THE CRITERIA AS PRESCRIBED BY ASTM E488 - 96(2003). LIFT BUYERS ARE RESPONSIBLE FOR ANY SPECIAL REGIONAL STRUCTURAL AND/OR SEISMIC ANCHORING REQUIREMENTS SPECIFIED BY ANY OTHER AGENCIES AND/OR CODES SUCH AS THE UNIFORM BUILDING CODE (UBC) AND/OR INTERNATIONAL BUILDING CODE (IBC).

THE MANUFACTURE, USE, SALE OR IMPORT OF THIS PRODUCT MAY BE SUBJECT TO ONE OR MORE UNITED STATES PATENTS, OR PENDING APPLICATIONS, OWNED BY BENDPAK, INC.

DO NOT REMOVE

ENGINEERED BY BENDPAK INC. USA

MADE IN CHINA

PART SPECIFICATION FORM

| | |
|-------------------------|---------------------------|
| BENDPAK Number: | 5905953 |
| MRP Description: | LABEL D (4-POST LIFTS CE) |
| Date: | 12/04/2015 |
| ECO : | 00724 |

1. Engineering Specification

Application:

DATA SERIAL TAG, 4-POST LIFTS, CE

Detailed Description:



BendPak Santa Paula, CA USA
www.bendpak.com

| | |
|------------------------------|----------------------|
| MODEL NUMBER | SERIAL NUMBER |
| | |
| LIFT CAPACITY | DATE OF MFG. |
| | |
| ROLLING JACK MAX CAP. | MAX PSI / BAR |
| | |

VOLTAGE

☐ 110-240VAC, 50-60 Hz, 1 Ph
 ☐ 208-440VAC, 50-60 Hz, 3 Ph
☐ 208-240VAC, 50-60 Hz, 1 Ph
 ☐ 208-440VAC, 50-60 Hz, 3 Ph

DANGER!
Disconnect Power
Before Servicing

CE ENE PM 5905953

SIZE: 3.38" L x 3.38" W
(85.7mm x 85.7mm)

2. Vendor Information (Or for Reference)

| Approved Vendor | Vendor Part # | Contact # | Preferred Vendor |
|--|---------------|-----------|------------------|
| 1) | | | |
| 2) | | | |
| OR BENDPAK ENGINEERING APPROVED EQUIVALENT | | | |



Santa Paula, CA USA
www.bendpak.com

MODEL NUMBER

SERIAL NUMBER

LIFT CAPACITY

DESCRIPTION

ROLLING JACK MAX CAP.

MAX PSI / BAR

VOLTAGE

☐ 110-240VAC, 50-60 Hz, 1 Ph

☐ 380-415VAC, 50-60 Hz, 3 Ph

☐ 208-240VAC, 50-60 Hz, 1 Ph

☐ 208-440VAC, 50-60 Hz, 3 Ph

DATE OF MFG.



DANGER!

Disconnect Power
Before Servicing

WARRANTY VOID IF DATA PLATE IS REMOVED



PN 5905953



2016
CE-Approved
4 Post Lifts
Colors & Graphics

4/7/16

CONFIDENTIAL INFORMATION.

You may not disclose, print, copy or disseminate this information.
Unauthorized use is a violation of federal criminal law.

4 Post Lifts Product Decal Positioning

A



Total of 4

PN 5905311

BPK Post Branding Decal-Large_5905311.pdf:

Material: Clear Adhesive PET

Size: 4.25"W x 38"H

Thickness: 4 Mil

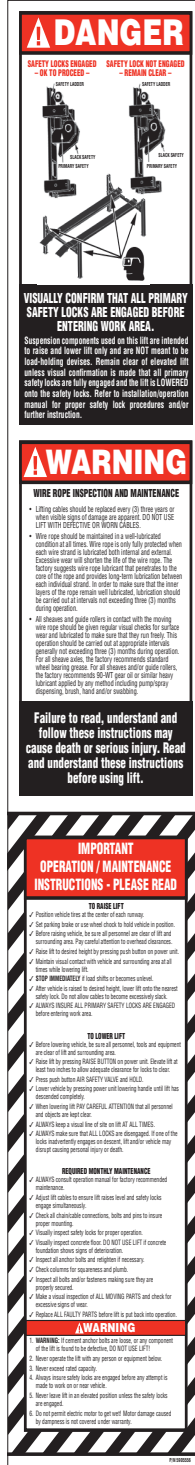
Finish: Polished

Ink: U.V. protected, Opaque White

Print Process: Silk Screen, 85 line-screen (Yellow color in file represents what should be clear PET material and SHOULD NOT print as Yellow ink. White area in file represents Opaque White ink.)

Lamination: Clear-gloss over-laminate for abrasion, chemical, and ultra violet protection

B



PN 5905556

4_Post_Safety_Decal.pdf:

Size: 4"W x 23"H

Material: White Vinyl Pressure Sensitive Adhesive

Thickness: 4 Mil

Ink: U.V. protected CMYK 2/C Process

Finish: Polished

Print Process: Offset Lithography - 200 line-screen or 300 p.p.i. for digital

Lamination: Clear-gloss over-laminate for abrasion, chemical, and ultra violet protection

C

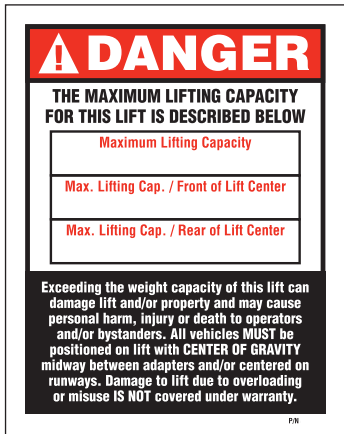


Ali_4_Post_labels.pdf:

(Order Labels from ALI)

4 Post Lifts Product Decal Positioning

***D**



P/N 5905401 - Max Cap. Danger 7k
P/N 5905695 - Max. Cap. Danger 7500
P/N 5905402 - Max Cap. Danger 9k
P/N 5905557 - Max. Cap. Danger 14K
P/N 5905406 - Max Cap. Danger 18k
P/N 5905407 - Max. Cap. Danger 27K
P/N 5905408 - Max. Cap. Danger 35K
P/N 5905409 - Max. Cap. Danger 40K

***Max. Cap. Danger.pdf:**

Size: 4"W x 5"H

Material: White Vinyl Pressure Sensitive Adhesive

Thickness: 4 Mil

Ink: U.V. protected CMYK 2/C Process

Finish: Polished

Print Process: Offset Lithography - 200 line-screen or 300 p.i. for digital

Lamination: Clear-gloss over-laminate for abrasion, chemical, and ultra violet protection

***E**



P/N 5905645 - NRTL_Lifting_Cap_Label_7K
P/N 5905700 - NRTL_Lifting_Cap_Label_7500
P/N 5905650 - NRTL_Lifting_Cap_Label_9k
P/N 5905665 - NRTL_Lifting_Cap_Label_14k
P/N 5905675 - NRTL_Lifting_Cap_Label_18k
P/N 5905680 - NRTL_Lifting_Cap_Label_27k
P/N 5905685 - NRTL_Lifting_Cap_Label_35K
P/N 5905690 - NRTL_Lifting_Cap_Label_40K

***NRTL_Lifting_Cap_Label_.pdf:**

Size: 4.5"W x 3.25"H

Material: White Vinyl Pressure Sensitive Adhesive

Thickness: 4 Mil

Ink: U.V. protected CMYK 2/C Process

Finish: Polished

Print Process: Offset Lithography - 200 line-screen or 300 p.i. for digital

Lamination: Clear-gloss over-laminate for abrasion, chemical, and ultra violet protection

***DEPENDS ON LIFT MODEL AND CAPACITY**

F



PN 5905940

Product_Data_Label_5905940-New.pdf:

Size: 4.5"W x 2.3"H

Material: White Vinyl Pressure Sensitive Adhesive

Thickness: 4 Mil

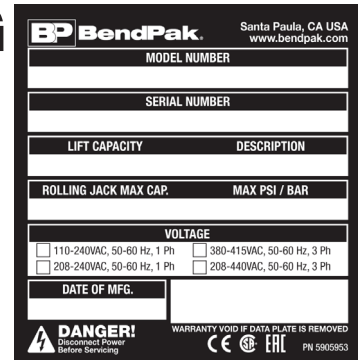
Ink: U.V. protected CMYK 2/C Process

Finish: Polished

Print Process: Offset Lithography - 200 line-screen or 300 p.i. for digital

Lamination: Clear-gloss over-laminate for abrasion, chemical, and ultra violet protection

G



PN 5905953

2015_Serial_Tag-D-5905953.jpg:

Size: 3"W x 3"H

Material: Material: 2 Mil. Matte Silver Polyester (Flex-PSE)

Print using thermal transfer printer with resin ribbon

Ink: 1 Color-Black

H



PN 5905326

ALI-Gold-Label-5905326.jpg

****FOR ALI APPROVED LIFTS ONLY**

4 Post Lifts Product Decal Positioning

****FOR ALI APPROVED
LIFTS ONLY**

D, H, G, F

Front of Post
(Top to Bottom)

E, C

Back of Post
(Top to Bottom)

**Place 1.25" from top of
Power Unit bracket to
the bottom of ALI Label.**

B

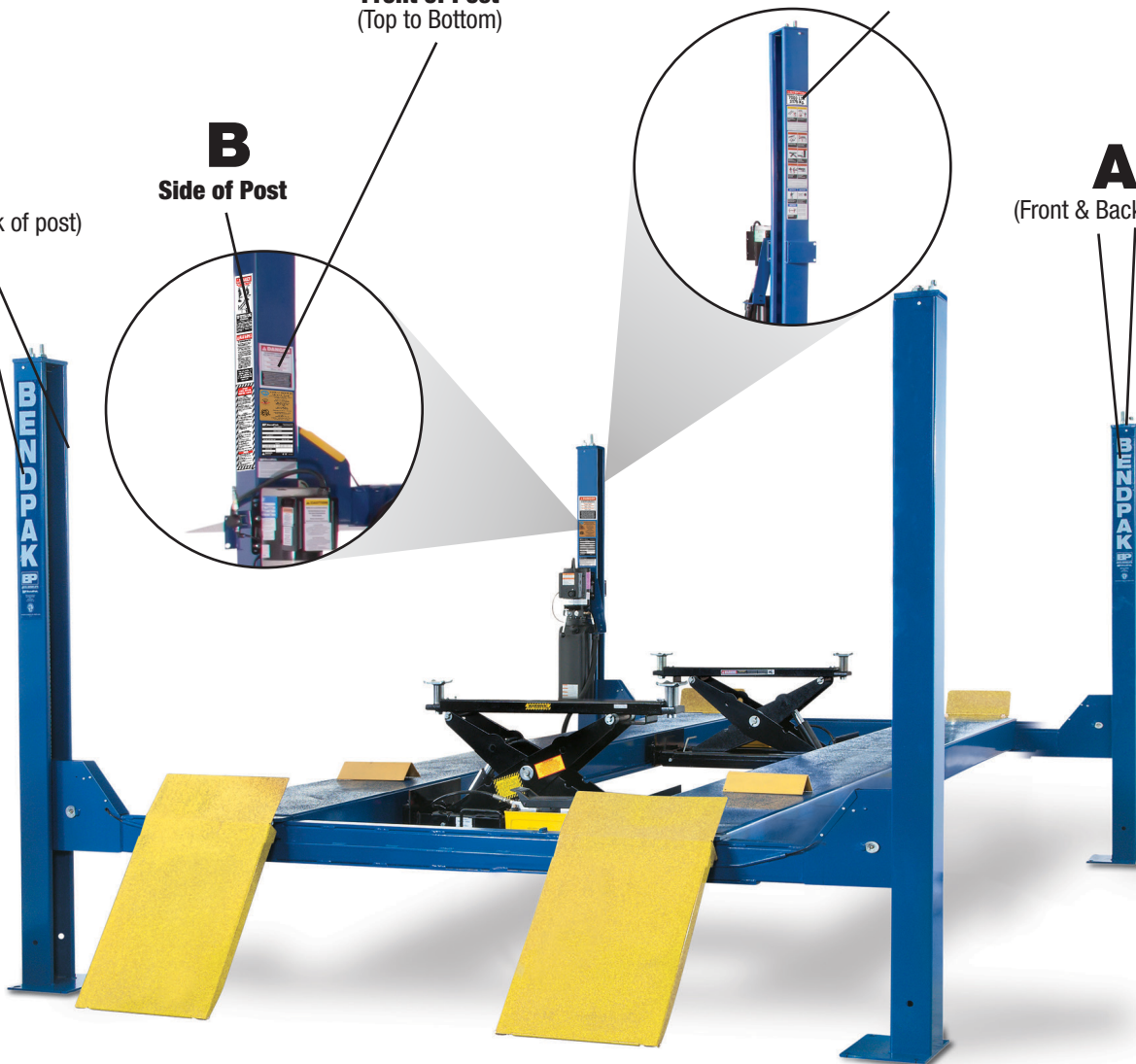
Side of Post

A

(Front & Back of post)

A

(Front & Back of post)



4 Post Lifts Packaging

| | |
|---|----------------------|
| BP BendPak. Santa Paula, CA USA www.bendpak.com | |
| MODEL NUMBER | SERIAL NUMBER |
| | |
| | |
| PN 5905285 | |

Serial_Tag_New-2015_Peel_Off-5905285.jpg:

Size: 3"W x 3"H

Material: 2 Mil. Matte Silver Polyester (Flex-PSE)

Print using thermal transfer printer with resin ribbon

Ink: 1 Color-Black

| | |
|---------------------------------|----------------------|
| PEEL OFF INVENTORY LABEL | |
| MODEL NUMBER | SERIAL NUMBER |
| | |
| PN 5905285 | |

Do not remove back sheet of this portion to prevent from sticking completely as shown in image.



MFD. BY BENDPAK INC.

LIFT TYPE: SURFACE MOUNT CAPACITY: MED/HVY DTY

POWER: ELECTRIC/HYDRAULIC ANCHORS: AS EQUIPPED

INSTALLATION - SEE OWNERS GUIDE OR CONTACT FACTORY

SHIPPING DAMAGE CLAIMS
WHEN THIS EQUIPMENT IS SHIPPED, TITLE PASSES TO THE PURCHASER UPON RECEIPT FROM THE CARRIER. CONSEQUENTLY, CLAIMS FOR THE MATERIAL DAMAGED IN SHIPMENT MUST BE MADE BY THE PURCHASER AGAINST THE TRANSPORTATION COMPANY AT THE TIME SHIPMENT IS RECEIVED.

PLEASE READ ALL OPERATORS/USERS MANUAL(S) PRIOR TO INSTALLATION AND OPERATION. UNDERSTAND AND COMPREHEND THE FULL CONTENTS OF EACH MANUAL(S) PRIOR TO INSTALLATION AND OPERATION. DELIVER THE MANUAL(S) TO ALL OPERATORS. FAILURE TO OPERATE THIS EQUIPMENT AS DIRECTED MAY CAUSE INJURY OR DEATH.

IMPORTANT NOTE:
BENDPAK LIFTS ARE SUPPLIED WITH CONCRETE FASTENERS MEETING THE CRITERIA AS PRESCRIBED BY ASTM E488 - 96(2003). LIFT BUYERS ARE RESPONSIBLE FOR ANY SPECIAL REGIONAL STRUCTURAL AND/OR SEISMIC ANCHORING REQUIREMENTS SPECIFIED BY ANY OTHER AGENCIES AND/OR CODES SUCH AS THE UNIFORM BUILDING CODE (UBC) AND/OR INTERNATIONAL BUILDING CODE (IBC).



INTERNAL BAR CODE - FOR FACTORY AUDIT ONLY 34086

BPK | STYOT | P20KVR | X18576 | HVY DTY/ GVR

THE MANUFACTURE, USE, SALE OR IMPORT OF THIS PRODUCT MAY BE SUBJECT TO ONE OR MORE UNITED STATES PATENTS, OR PENDING APPLICATIONS, OWNED BY BENDPAK, INC.

ENGINEERED BY BENDPAK INC USA

MADE IN CHINA

Manufacturer Packaging Label:

Size: 5"W x 5"H

Material: White adhesive paper

Ink: U.V. protected CMYK 2/C Process

Print Process: Offset Lithography - 200 line-screen or 300 p.p.i. for digital