

JP-6

Car Lift Accessories

SKU# 5175349

6,000-lb. Capacity / Telescoping Sliding Jack Platform



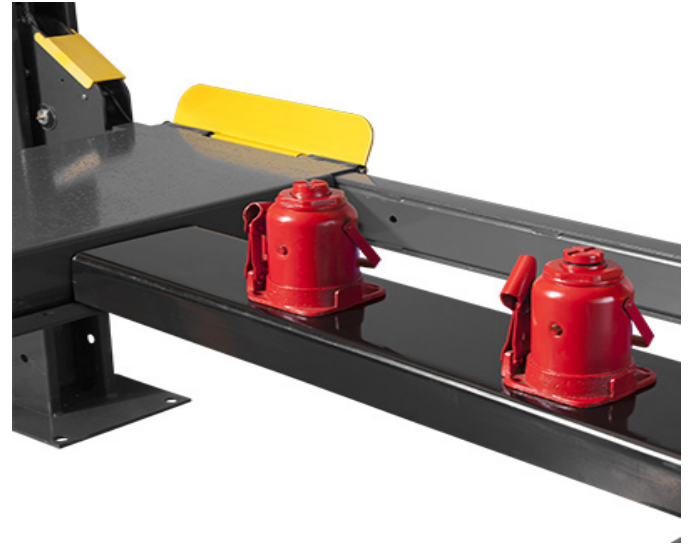
Questions? Contact BendPak's Sales Team

sales@bendpak.com | 1-800-253-2363

Monday - Friday, 6AM to 4:30PM PST

Our Higher-Capacity Sliding Jack

This optional 6,000-lb. capacity sliding jack platform grants you the versatility and convenience you've been looking for and a great addition to your [four-post lift](#). Thanks to the easy-slide design, there's now a hassle-free way to adjust the runways of your four-post lift to accommodate different tread widths. The precision grooves allow the jack platform to be positioned anywhere under a vehicle, making this optional sliding jack perfect for wheel and suspension work. The JP-6 is an adjustable sliding jack platform.



Features

- 6,000-lb. capacity
- For use on four-post lifts, lube racks or quick-lube pits
- Heavy-duty steel construction and low-profile design
- Works with all four-post lifts
- Sits on runways
- Used with bottle jacks
- Great option for occasional access to wheels and brakes