

HD-9STX

Four-Post Lifts

SKU# 5175862

9,000-lb. Capacity, Four-Post Lift / Narrow Width / High Lift

Questions? Contact BendPak's Sales Team

sales@bendpak.com | 1-800-253-2363

Monday - Friday, 7AM to 4:30PM PST

More Height and Narrow Body

The HD-9STX is your 9,000-lb. rugged [four-post lift](#) solution for when you need get something heavy and high, but you don't have room to spare on the sides. Perfect for vehicle storage and service in shops and garages with higher ceilings. Whether you're a service professional or a DIY'er, BendPak's got the right lift for you. This model is available with optional casters, drip-trays, jack platform and more.

HD-9 Series Lifts

SKU#	Model	Description
5175859	HD-9XL	Standard Width / Extended Length
5175860	HD-9ST	Narrow Width
5175861	HD-9	Standard Width
5175863	HD-9XW	Standard Width / High Lift

Features

- CE Approved and Certified. Meets or exceeds the standards prescribed by European Standard EN-1493
- Freestanding design
- Perfect for parking, storage and service
- Runways accommodate narrow and standard vehicles
- Runways include rail-kit for optional accessories
- Single hydraulic cylinder mounted underneath runway
- Fully enclosed lifting cables, safety locks and sheaves
- Internal anti-sway slider blocks in each column
- Oversized self-lubricating cable rollers
- Heavy-duty 3/8" aircraft cable and 1.25" roller axles
- Runways feature non-skid surface
- Push-button pneumatic safety release
- Independent backup slack-cable safety latches
- Customizable power unit location
- Removable approach ramps
- Longer approach ramps for low-clearance vehicles
- Optional drive-thru ramps available
- Optional drip trays available
- Optional solid deck available to increase storage capacity
- Optional 4,500-lb. air / hydraulic rolling jacks available
- ETL Approved



Dual-hub cable sheaves

Dual-hub cable sheaves are more expensive to manufacture, but it's not a cost we push back onto you. They're necessary to prevent axles, sheaves and cables from burning out before they should. Our philosophy is that your car lift should be the last thing you worry about first thing in the morning.

Multi-level locking positions

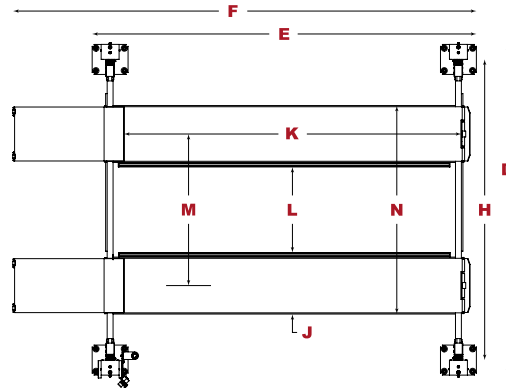
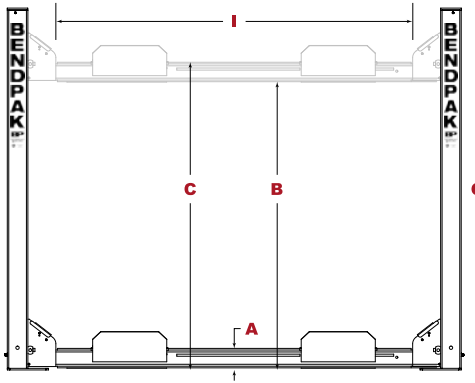
Unique service technicians require unique servicing positions; with the HD-9, you can safely lock your four-post car lift at varied heights, so you're never crouching or reaching uncomfortably to perform auto maintenance. If you're raising the lift for parking purposes, that variation is going to come in handy, depending on how you stack your vehicles.

Heavy-duty aircraft cable

Each four-post lift comes with four lifting cables made from superior-grade stainless steel. Each individual cable is rated to handle 14,400 lbs. This makes their combined rating over 640% of the total capacity. These cables are hidden within the post columns for both the safety and overall streamlined look of the lift.

Note: An air supply (minimum 30 psi / 3 CFM) is required for the safety-lock mechanisms to disengage. It is solely the responsibility of the end-user to provide, install and maintain the air supply.

*Not all BendPak lift models meet the standards as prescribed by ANSI/ALI ALCTV-2017 or ANSI/UL 201. Consult www.autolift.org for a complete list or contact BendPak via contact@bendpak.com.



Model	HD-9XL	HD-9ST	HD-9	HD-9STX	HD-9XW
Style	Standard Width / Ext. Length	Narrow Width	Standard Width	Narrow / High Lift	Standard Width / High Lift
SKU#	5175859	5175860	5175861	5175862	5175863
Lifting Capacity	9,000 lbs. (4,082 kg)	9,000 lbs. (4,082 kg)	9,000 lbs. (4,082 kg)	9,000 lbs. (4,082 kg)	9,000 lbs. (4,082 kg)
A - Min. Runway Height	4.5" (114 mm)	4.5" (114 mm)	4.5" (114 mm)	4.5" (114 mm)	4.5" (114 mm)
B - Max. Rise	70" (1,778 mm)	70" (1,778 mm)	70" (1,778 mm)	82" (2,083 mm)	82" (2,083 mm)
C - Max. Lifting Height	74.5" (1,892 mm)	74.5" (1,892 mm)	74.5" (1,892 mm)	86.5" (2,197 mm)	86.5" (2,197 mm)
D - Overall Width	110.25" (2,800 mm)	100.25" (2,546 mm)	110.25" (2,800 mm)	100.25" (2,546 mm)	110.25" (2,800 mm)
E - Outside Length	198" (5,029 mm)	174" (4,420 mm)	174" (4,420 mm)	198" (5,029 mm)	198" (5,029 mm)
F - Overall Length	224" (5,690 mm)	200" (5,080 mm)	200" (5,080 mm)	224" (5,690 mm)	224" (5,690 mm)
G - Height of Columns	88" (2,235 mm)	88" (2,235 mm)	88" (2,235 mm)	100" (2,540 mm)	100" (2,540 mm)
H - Width Between Columns	100.25" (2,555 mm)	89.75" (2,280 mm)	100.25" (2,555 mm)	89.75" (2,280 mm)	100.25" (2,555 mm)
I - Drive-Thru Clearance	86.5" (2,197 mm)	76.5" (1,943 mm)	86.5" (2,197 mm)	76.5" (1,943 mm)	86.5" (2,197 mm)
J - Runway Width	19" (483 mm)	19" (483 mm)	19" (483 mm)	19" (483 mm)	19" (483 mm)
K - Length of Runways	188" (4,775 mm)	164" (4,166 mm)	164" (4,166 mm)	188" (4,775 mm)	188" (4,775 mm)
L - Width Between Runways	37.5" (952 mm) - 44-3/8" (1,127 mm)	37.5" (952 mm)	37.5" (952 mm) - 44-3/8" (1,127 mm)	37.5" (952 mm)	37.5" (952 mm) - 44-3/8" (1,127 mm)
M - Runway Centerline	56.5" (1,435 mm) - 63-3/8" (1,610 mm)	56.5" (1,435 mm)	56.5" (1,435 mm) - 63-3/8" (1,610 mm)	56.5" (1,435 mm)	56.5" (1,435 mm) - 63-3/8" (1,610 mm)
N - Outside Edge of Runways	75.5" (1,918 mm) - 82-3/8" (2,092 mm)	75.5" (1,918 mm)	75.5" (1,918 mm) - 82-3/8" (2,092 mm)	75.5" (1,918 mm)	75.5" (1,918 mm) - 82-3/8" (2,092 mm)
Min Wheelbase @ Capacity	135" (3,429 mm)	115" (2,921 mm)	115" (2,921 mm)	135" (3,429 mm)	135" (3,429 mm)
Min Wheelbase @ 75%	115" (2,921 mm)	100" (2,540 mm)	100" (2,540 mm)	115" (2,921 mm)	115" (2,921 mm)
Min Wheelbase @ 50%	95" (2,413 mm)	85" (2,159 mm)	85" (2,159 mm)	95" (2,413 mm)	95" (2,413 mm)
Min Wheelbase @ 25%	80" (2,032 mm)	70" (1,778 mm)	70" (1,778 mm)	80" (2,032 mm)	80" (2,032 mm)
Time to Full Rise	50 seconds	50 seconds	50 seconds	50 seconds	50 seconds
Locking Positions	every 4" (102 mm)	every 4" (102 mm)	every 4" (102 mm)	every 4" (102 mm)	every 4" (102 mm)
Lock Spacing	12	12	12	15	15
Motor	220 VAC / 60 Hz / 1 Ph	220 VAC / 60 Hz / 1 Ph	220 VAC / 60 Hz / 1 Ph	220 VAC / 60 Hz / 1 Ph	220 VAC / 60 Hz / 1 Ph