



**Brand: Ranger**

**Model: R30XLT**

**Description: POWER ASSIST TIRE CHANGER / NEXTGEN™ SERIES**

Ranger's new R30XLT combines traditional swing arm tire changer elements with advanced power assist capabilities to service everything from standard steel wheels to challenging low-profile tires on large luxury wheels.

The R30XLT is a space saving swing-arm tire changer requiring less floor space than tilt-back designs featuring a proprietary bead press mounting system with multiple pressing arms and a quick-change tool holder. Powerful bead rollers, a quick-change lower disc roller and centering cone aids in clamping, lubricating, demounting, mounting and inflation of difficult tire and wheel combinations. The dual-cylinder Rim-Guard™ tabletop clamping system features adjustable wheel clamps that can accommodate wheels 10" up to 33" and a geometric table design allows unhindered inspection of the bottom bead. A powerful 110V/220V high-torque drive motor operates at a controlled speed minimizing damage to wheels and tire beads when servicing tough combinations.

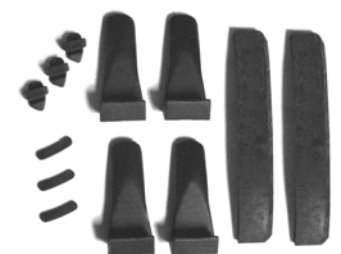
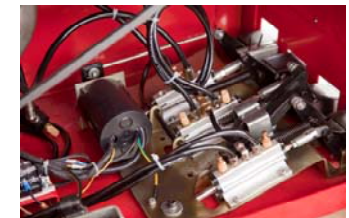


#### FEATURES:

- A new **high-torque electric turntable** drive features increased speed and reversible direction for quicker tire removal and installation. Controlled speed gives low profile and run-flat beads time to relax to reduce the risk of tire damage.
- **Improved electric motor** features the best of proven technologies, including rugged copper rotor construction, stronger high-quality ball bearings, thermal-cool epoxy insulation, and durable rolled steel frames. All motors are 110-208/230V and 50-60 hertz capable.
- A **powerful bead press mounting system** features powerful traveling bead rollers, a quick-change lower disc roller and centering cone to aid in clamping, lubricating, demounting, mounting and inflation difficult tire and wheel combinations.
- Up front controls and a sensible ergonomic design provide ease of use and more efficient operation.
- **Stainless-steel and aluminum pneumatic cylinders** are designed to reduce machine vibration and provide low-friction and long life operation. Internal end-of-stroke cushions are standard that help provide cushioning at the end of each full stroke to reduce wear on seals, wear band and piston rod.
- A hardened **alloy steel mount and demount head has a unique** equidimensional shape with micro-smooth tool head surface that glides tire beads effortlessly during mounting and demounting procedures.
- **Quick-change tool head chuck** provides infinite tool head axis positioning for pinpoint wheel edge tracking within a wide range of wheel diameters and tire and wheel combination minimizing tire damage and relaxing the strain on low profile tire beads.



- A balanced flywheel helps the machine run smoothly, reduces vibration, and helps minimize associated stress on other machinery components.
- A completely new and proprietary **bead-breaker design** features bilateral pneumatic accelerators for lightening **fast bead-breaker speeds** in both directions. A 100% stainless-steel cylinder body means no more worrying about moisture contamination from corrosion due to air source condensation. Other exclusive design features include a **multi-axis, adjustable blade** for multi-angle tire capacity, a large, dual-flange axle that eliminates blade flex and premature failure, and **adjustable blade settings** that help accommodate a larger variety of tire and wheel combinations.
- **Enhanced bead breaker arm** features rugged box frame construction that increases the mechanical strength and assures years of dependable service and performance. A **large rubber bump-stop** assures smooth return to help reduce shock loading and minimize wear on pneumatic cylinder, guides and associated moving parts.
- Industrial-grade, 45-micron, **pneumatic control valves** feature die cast and machined bodies constructed from zinc and aluminum. High-performance polyurethane seals and self-lubricating, Teflon® piston guides provide increased service life and performance at the highest level possible within almost every imaginable working condition. Valve plungers feature muffled extrication ports that direct any dirt or contamination accumulated on the outside perimeter of the spool to be automatically blown away each time the valve goes into the release position.
- Dual positioning **adjustable RimGuard™ wheel clamps** can accommodate wheels 10" up to 33" and feature internal and external multi-teeth jaws.
- A **geometric tabletop** provides for easier bead lubrication and allows operators to make visual inspections of the lower bead during mounting and inflation procedures.
- Durable **forged steel (instead of cast iron) foot pedal levers** will stand up to everyday use and abuse in high-volume tire centers. Snap action spring return means precise and controlled operation.
- Foot pedal control valves feature **multi-link rod connections** for non-binding plunger movement and precise bilateral control.
- Ranger Next Generation™ tire changers feature **high pressure polyurethane pneumatic tubing with** mirror smooth seamless bore for exceptional flow rates, high abrasion resistance, high burst tolerance and maximum kink resistance. Ranger tire changers feature the renowned **TurboBlast™ bead seating system\*** that blasts a powerful air burst between the tire and rim to help seat stubborn beads fast. A durable, non-marring nylon discharge barrel features a contoured tab that locks securely on the edge of the rim for better control during air discharge between the tire and wheel. A welded-steel, eight-gallon surge tank is larger than competitive models for all the inflation power you need, when you need it.
- A newly designed, **maintenance-free gearbox** features a large oil and grease reservoir that helps provide efficient heat dissipation and improved lubrication for longer service life. Internal baffles and a constant seating stress flange gasket assure positive, leak-free venting. The rugged gearbox enclosure is precision milled for precise alignment of horizontal and vertical bases and features precision helical gears that operate much more smoothly and quietly than typical spur gear transmissions.
- Important **wheel service accessories** come standard like a large soap bucket with brush and a multi-piece plastic **wheel protector kit** that includes turntable jaw covers, bead-breaker blade boots and specialized mount / demount head covers to help protect delicate wheels.
- We throw in a hardened steel **tire iron and bead lever tool** to assist during all tire mounting and demounting operations.



- All main-lead **electrical terminals, auxiliary switches, and motor enclosures are sealed** for air-tight, dust-free and contamination-proof protection of terminal leads.
- **Specially engineered drive-belt** features convex sidewalls to distribute wear evenly while providing proper belt support for improved service life. Flex-bonded cords and flex-weave covers resist the effects of oil, heat, ozone, weather and aging.
- A rigid **45mm spring assist hexagonal vertical tool shaft** combined with a hardened-steel horizontal outrigger support arm maintains perfect position of the mount-demount tool head during all tire service procedures to reduce the chance of expensive wheels getting damaged.
- A simple to use **tire inflator features foot-pedal operation** and inflation hose with a sure-grip clip-on valve chuck enabling hands-free operation. Integrated air pressure dump valve enables you to lower tire pressure with a simple push of a button.
- Optional motorcycle turntable clamps add a whole extra level of versatility. Expand your capabilities, clientele and your bottom line.

FEATURES / SPECIFICATIONS	R30XLT
Type of Drive System	Electric / Air
Motor	2 HP (110/220VAC 50-60 HZ)
Air Requirement	110-175 PSI (8-12 BAR)
Wheel Clamping Method	4 Clamps - Internal / External
Table Clamping System	Dual Pneumatic Cylinders
Bead Breaking System	Pneumatic Blade
Power Assist Towers	Integrated Center Post
Tool Holder	Manual Lock
Inflation Gauge With Integrated Air Dump Valve	Standard
Inflation Pressure Regulator/Limiter	Standard
Water Filter	Standard
Oiler / Lubricator	Standard
Air Regulator	Standard
Breaker Bar	Standard
Large Soap / Lubricator Bucket	Standard
Brush	Standard
Tower Design	Rigid Fixed
Bead Lifting Roller(s)	Single / Left
Upper Bead Assist Roller	Standard
Traveling Drop-Center Hold Down Device	Standard
Inflation Restraint Device	Standard
Bead Seating System	Turbo Blast / Bead Seating
Tool Tray / Bin Storage	Standard
Motorcycle Turntable Clamps	Optional
Internal Rim Clamping Capacity	13" – 33" (330 mm - 838 mm)
External Rim Clamping Capacity	10" – 28" (254 mm - 711 mm)
Turntable Tire Width Capacity (Mounting)	5" – 22" (127 mm – 559 mm)
Bead Breaker Tire Width Capacity (Demounting)	3" – 15" (76 mm – 381 mm)
Maximum Tire Diameter	50" (1270 mm)
Shipping Weight	1032 lbs. / 469 kg.

Specifications are subject to change without notice.