



QUATRA ™ BendPak

Model(s): XR-12000A

Description: Quatra™ Series True Vertical Scissors Alignment Lift

The Quatra™ Series Pantograph Scissors Alignment Lift from BendPak™ Raises the Bar

The distinctive Quatra™ series scissors alignment lift by BendPak™ revolutionizes the lifting industry by offering 12,000-pounds of uninhibited alignment capacity and true vertical lifting for a more compact footprint to better accommodate smaller service bays and work areas. The unique quad-opposing pantograph scissors design is void of restrictive arm structures usually associated with scissors lifts providing you with full, unobstructed vehicle access and effortless workspace entry and exit. More space means more freedom for you to work and work efficiently which increases productivity and most of all, your profits. No other scissors lifts on the market offer the freedom that BendPak's Quatra series lifts provide.



The extended length XR-12000A was designed for vehicle alignments and general service work and can accommodate a variety of wheelbases from short compacts to extended length pickups and work trucks. Integrated recessed full-floating front radius plates and oversized rear slip-plates enable you to perform four-wheel alignments on a full spectrum of vehicles. The XR-12000A is compatible with all leading alignment instrumentation, including newer 3D systems and camera type wheel aligners.

Make more money by going straight...up.

Each BendPak Quatra series lift delivers straight-up vertical lifting unlike parallelogram style scissors lifts that require more floor space due to their lateral lifting characteristics. Because there is no forward or rearward movement, the result is a more compact footprint to accommodate smaller service bays and work areas.

Compared to parallelogram and other traditional scissor lifts, the XR-12000A delivers:

- Increased work space below the lift and around the runways
- Unobstructed access points for easy entry and exit - front, rear and both sides
- Up front walk through for making unhindered wheel alignment adjustments



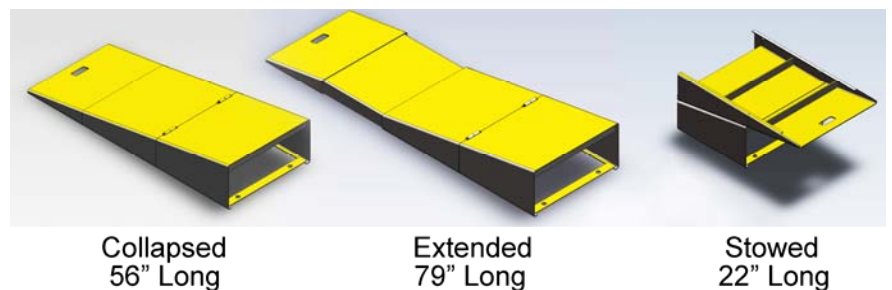
Better by design

With an excellent combination of speed and ergonomic design, BendPak's Quatra series pantograph scissor lifts improve technician efficiency and productivity which helps you improve overall profitability. Featuring rapid rise and descent speeds, vehicles are positioned smoothly to any desired height with simple to operate controls. A sophisticated yet simple six-cylinder master-slave hydraulic circuit provides precise equalized lifting without the need for complicated electronics that often fail when subjected to high-use and soiled work environments.

The XR-12000A incorporates a full-menu of engineering and design enhancements that provide long term ruggedness and increased dependability. From the hydraulic cylinders and safety locking mechanisms, to fluid controls and pneumatics, all integral system components are enclosed within the runways to help protect them from harmful corrosives and operational damage. With few moving parts, and an uncomplicated fluid power system, BendPak's Quatra's offer the most economical and dependable method of lifting, delivering you many years of trouble free service.

It's all in the approach

When it comes to positioning vehicles on the lift, there is no other lift on the market that makes it easier. Extendable, hinged, collapsible, and stowable approach ramps are an industry first. The extendable approach ramps deliver a range of motion from 59" all the way up to an incredible 76" overall length in mere seconds. Not only do these user favorites make it convenient to drive ground hugging cars on the lift, when space is tight, their collapsible and stowable design means you're able to close the shop doors at the end of the day.



In short, BendPak's Quatra series lifts are the ideal solution for customers who want one of the industry's most comprehensive lift packages with productivity and more importantly, profitability enhancing features.

Balanced Lifting

Quatra lifts are equipped with an intelligent hydraulic regulating manifold featuring four, two-position ball valves to balance hydraulic pressure accurately between the master and slave cylinders for precise, equalized lifting of the runways. The manifold valve assembly is located at the power console with removable cover for simple routine maintenance and adjustment.



It's what we do

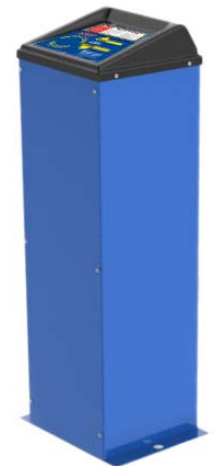
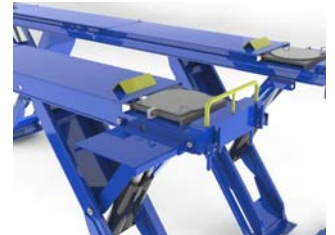
It's not by chance that BendPak is the global leader in lifting systems. Our passion extends well beyond the products we build - it originates from the natural way we do business. BendPak has earned a reputation for consistent quality through decades of manufacturing experience and uncompromising in-field support. We thrive on continually building our reputation of service excellence by finding better ways help our customers reach their goals. Our lifting products are designed from the outside in, driven by real customer insight. This focus on customer-driven engineering and product management allows us to better understand how our equipment is used so we can design products to meet and exceed our customers' ever-changing needs. All across the globe, customers recognize our distinctive blue lifts and ask for them by name because they represent a combination of performance, productivity, reliability, and value unlike any other lift brand on the market.

Business solutions that are easy on your wallet

Trained, knowledgeable BendPak representatives are positioned throughout the world to best meet our customers' needs. Our highly trained authorized dealers not only help you identify the right equipment for your business, they'll connect you with flexible payment options to make acquiring that equipment easier. Various financing packages and leasing opportunities customized for virtually any budget help you fulfill your equipment needs while meeting your financial goals. Our business solutions don't end there. We work with distribution channel partners around the globe who share our dedication to excellence. We also support our dealers with effective, informative marketing and the powerful BendPak brand — which carries the strength of a proven market leader.

Key Features

- 12,000 lbs. lifting capacity.
- Extended runway design for greater vehicle capacity
- Integrated recessed full-floating front radius plates and oversized rear slip-plates
- Turn plate pockets feature adjustable leveling bolts for infinite turn plate leveling
- Durable powder coat finish can withstand harsh environments and chemical spills and will provide years of protection
- Extendable, hinged, collapsible, and stowable approach ramps
- Multi-position runway work steps
- Non-skid runways provide sure grip for vehicles and technicians
- Dependable electric/hydraulic power system
- Cylinders feature integrated velocity fuses to control sudden descent
- Power console features simple operator controls
- Open front design with clear center, sides and rear
- Multi-position automatic leveling system
- Quad automatic safety locks with pneumatic push-button release
- Collapsible front tire stops clear for low vehicle skirts and alignment instrumentation
- Lubricated-for-life bearings on all pivot points
- Rugged steel legs and formed steel runways
- Turned, ground, polished and hardened zinc plated axle pins
- Grease nipples on all moving pins and bearings
- High efficiency hydraulic power unit provides faster raising and descent times
- Easy access to hydraulic/electrical components for simple routine servicing
- Easy to use and understand operator controls
- Power unit console with easy access front panel
- Can be flush mounted or recessed

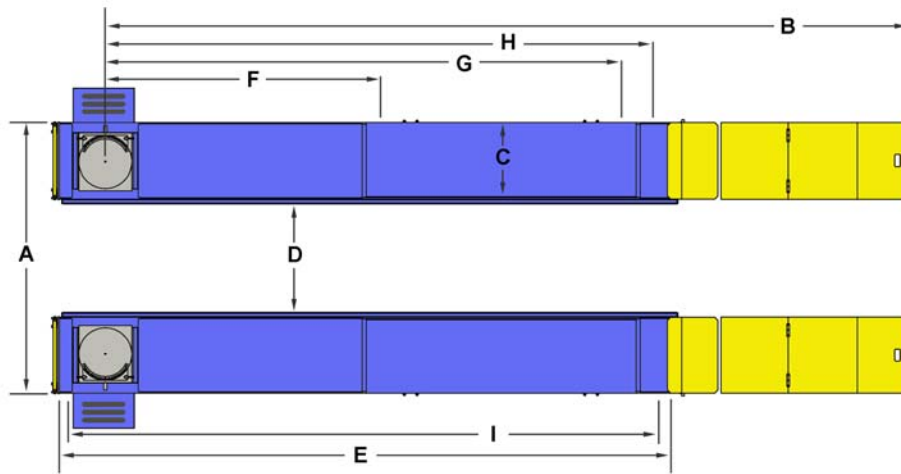


Optional Equipment

- Optional 6,000 pound capacity rolling jacks (model RJ-6) make a great addition to increase service capacity. Each jack has telescoping arms and frame contact pads that can be extended over the runways and positioned under vehicle lifting points. Each jack features three safety-lock positions and stackable truck and van adapters for increased lifting height and better access to frame contact points on high ground-clearance vehicles. The jacks come equipped with a commercial grade air-hydraulic pump requiring a maximum pressure of 125 PSI and 10-20 CFM.
- An integrated rolling bridge airline kit is available that installs neatly within the runway to create a more tidy hose routing solution for single or dual jack purpose.



Floor Plan / Specifications



MODEL	XR-12000A
Lifting Capacity*	12,000 lbs. / 5443 Kg.
*Max Capacity / Front Axle	6,000 lbs. / 2722 Kg.
*Max Capacity / Rear Axle	6,000 lbs. / 2722 Kg.
A - Overall Width	86" / 2184 mm.
B - Overall Length / Approach Ramps Extended	296.5" / 7531 mm.
B - Overall Length / Approach Ramps Collapsed	276.5" / 7023 mm.
B - Overall Length / Approach Ramps Stowed	242.5" / 6159 mm.
C - Runway Width	24" / 610 mm.
D - Width Between Runways	37.5" / 952 mm.
E - Length of Runways	219-1/2" / 5575 mm.
F - Min. 4-Wheel Alignment (*)	85" / 2159 mm.
G - Max. 4-Wheel Alignment (*)	160" / 4064 mm.
H - Max 2-Wheel Alignment (*)	194" / 4928 mm.
I - General Service Wheelbase (*)	194" / 4928 mm.
Min. Runway Height	11-1/4" / 286 mm.
Max. Rise	68" / 1727 mm.
Max. Lifting Height	74" / 1880 mm.
Min. Wheelbase @ Rated Capacity	155" / 3937 mm.
Min. Wheelbase @ 75% Capacity	135" / 3429 mm.
Min. Wheelbase @ 50% Capacity	110" / 2794 mm.
Min. Wheelbase @ 25% Capacity	90" / 2286 mm.
Locking Positions	13"
Standard Motor (**)	220 VAC / 60 Hz. / 1 Ph.

* May vary depending on wheel size. Specs above using 235/65/R17 Tire - 28-3/4" Diameter

** Special Voltages Available Upon Request.

The design, material and specifications are subject to change without notice.